

[illegible]

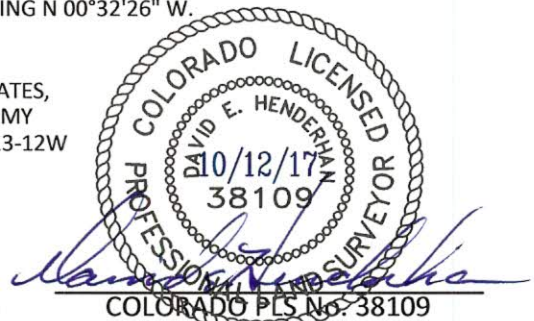
1. GPS OPERATOR T. SHERRILL OBSERVED A PDOF OF 1.3.
2. ALL GPS OBSERVATIONS ARE IN COMPLIANCE WITH COGCC RULE No.215.
3. EXISTING IMPROVEMENTS WITHIN 500' OF LOCATION. SEE LOC. DRAWING.
4. SURROUNDING SURFACE USE IS NATIVE BRUSH, NON CROP RANGELAND.

I, DAVID E. HENDERHAN, AN EMPLOYEE AND AGENT ON BEHALF OF D.R. GRIFFIN & ASSOCIATES, INC. STATE THE PLAT HEREON IS A CORRECT REPRESENTATION OF A SURVEY MADE UNDER MY SUPERVISION ON THE 29th DAY OF SEPTEMBER, 2017 OF THE SHOWN GUNDERSON 0994-13-12W AND THAT THE LOCATION HAS BEEN STAKED ON THE GROUND AS SHOWN ON THIS PLAT.

Notice: In accordance with Colorado State Law, any legal action based upon any defect in this survey plat must commence within three (3) years after first discovery of such defect. In no event, may any action based upon any defect in this survey plat be commenced more than ten (10) years from the date of certification shown hereon.

SPCS COLORADO CENTRAL ZONE NAD 27 BASED ON GPS OBSERVATIONS
AND OPUS SOLUTION ON DRG CONTROL POINT "23-9-94" HAVING A
POSITION OF:
NAD83(2011)
LAT 39° 15' 45.58" NORTH
LONG 107° 51' 00.68" WEST
NAVD88 ELEVATION: 7182.10

THE WEST LINE OF THE SW¼ OF SECTION 13, MONUMENTED BY BLM
AC'S AND BEARING N 00°32'26" W.



GUNDERSON 13-11 PAD

COLORADO PLS No. 38109



(307) 362-5028

DRAWN: 10/11/2017 - TCM

SCALE: 1" = 1000'

REVISED: N/A - .

DRG JOB No. 21443

A8-13-12W

***PLAT OF DRILLING LOCATION IN
NESW, SECTION 13, FOR
LARAMIE ENERGY, LLC.***

**1617' F/SL, & 1703' F/WL, SECTION 13,
T.9 S., R. 94 W., 6TH P.M.,
MESA COUNTY, COLORADO**