

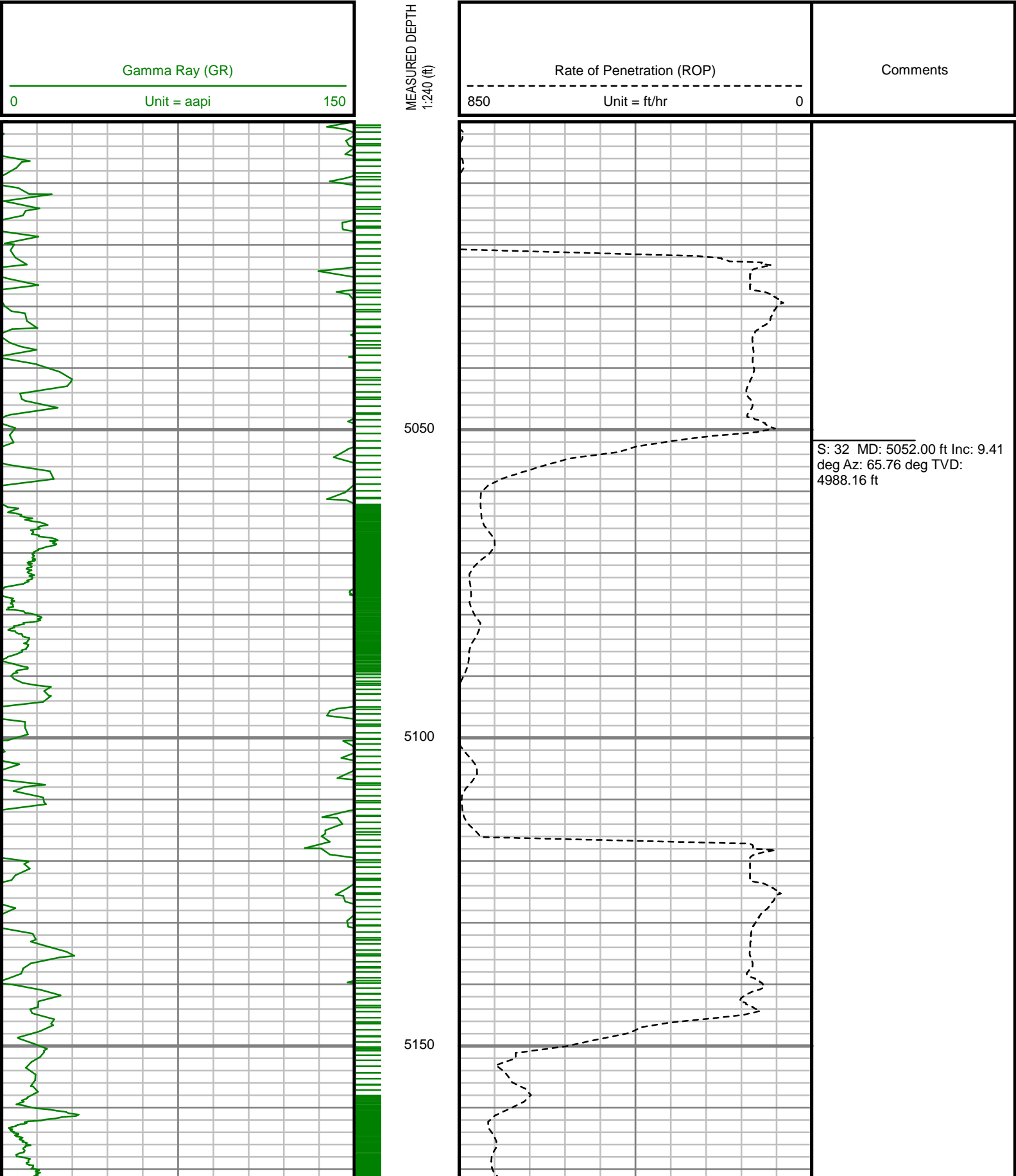
5" = 100' FEET MD

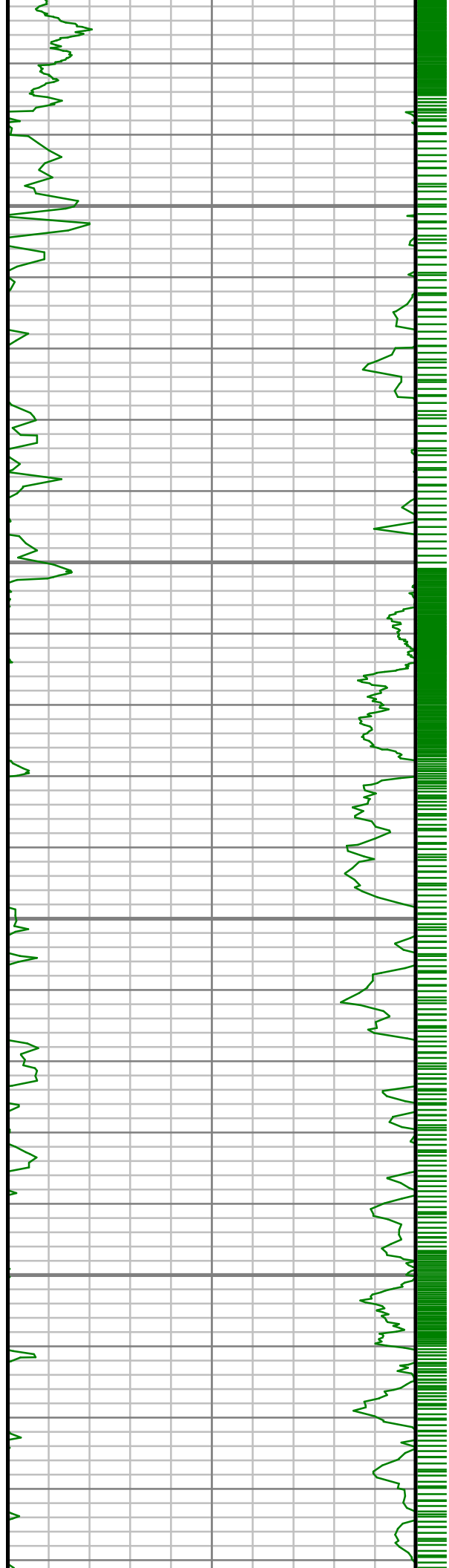
COMPANY : ENCANNA OIL AND GAS (U.S.A.) INC WELL : RUHL 1F-32H-B264 FIELD : WATTENBERG COUNTY : WELD STATE : COLORADO COUNTRY : U.S.A. UWI : 05-123-40283				COMPANY : ENCANNA OIL AND GAS (U.S.A.) INC WELL : RUHL 1F-32H-B264 FIELD : WATTENBERG COUNTY : WELD STATE : COLORADO COUNTRY : U.S.A. UWI : 05-123-40283			
DEPTH REF. : RKB REF. HEIGHT : 25.000 ft GROUND LEVEL : 4979.000 ft		RKB to Ground Level G.L. to MEAN SEA LEVEL		DIRECTIONAL ROP			
BOREHOLE RECORD			DEVIATION RECORD				
HOLE SIZE in	FROM ft	TO ft	INCLINATION deg	FROM ft	TO ft		
12.25	0	1225	0 - 11	0	4928		
8.75	1225	7512	11 - 0	4928	6634		
6.125	7512	11835	0 - 85	6634	7512		
			85 - 92	7512	11835		
CASING RECORD							
CASING SIZE in	FROM ft	TO ft					
16	0	140					
9.625	0	1212					
7	0	7494					
			DRILLING CO. : H&P RIG : 278				
			LMD UNIT NO. : WMD-00046-DISTRICT : CASPER SPUD DATE : 12/13/2014				
			LMD START DATE : 12/16/2014 DEPTH : 5000 ft				
			LMD END DATE : 12/25/2014 DEPTH : 11835 ft				
			TOTAL DEPTH : 11835 ft				



All interpretations are opinions based on inferences from electrical or other measurements and we cannot, and do not guarantee the accuracy or correctness of any interpretations, and we shall not, except in the case of gross or willful negligence on our part, be liable or responsible for any loss, costs, damages or expenses incurred or sustained by anyone resulting from any interpretation made by any of our officers, agents or employees. These interpretations are also subject to our general terms and conditions as set out in our current price schedule.

ENCANA OIL AND GAS (U.S.A.) INC  
RUHL 1F-32H-B264  
WATTENBERG FIELD  
WELD COUNTY, COLORADO  
05-123-40283



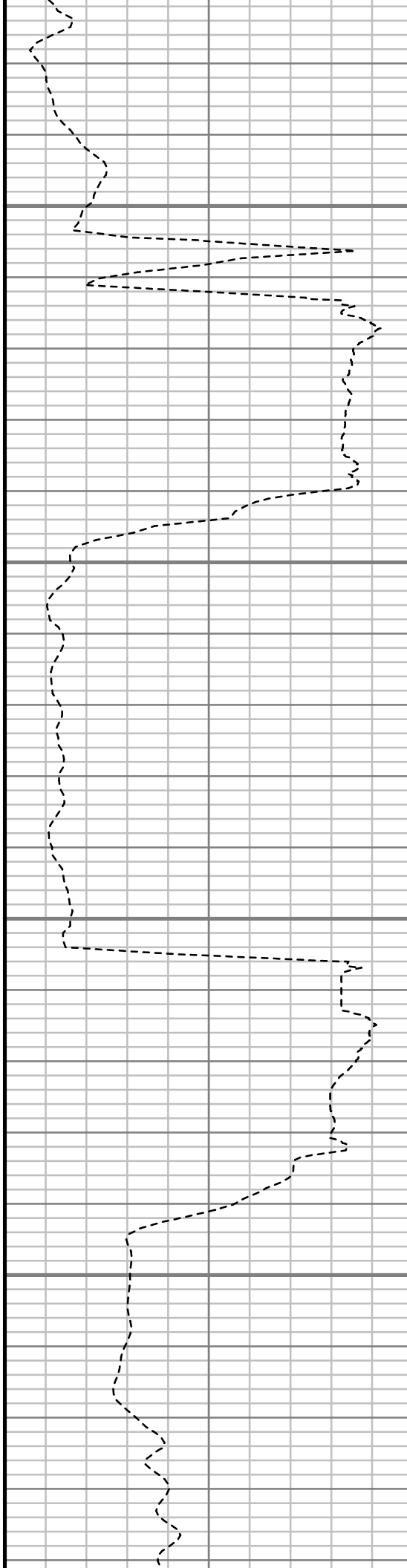


5200

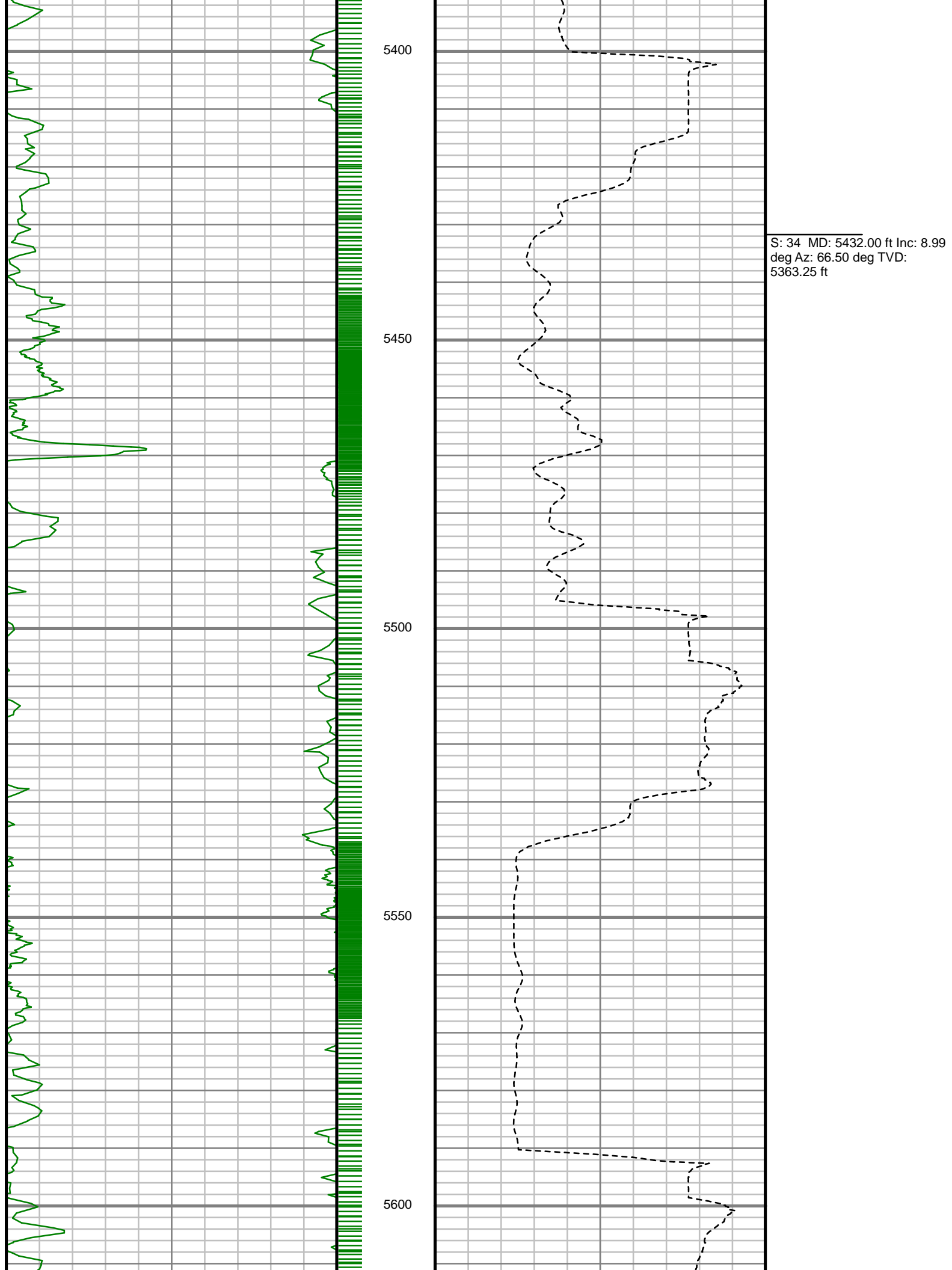
5250

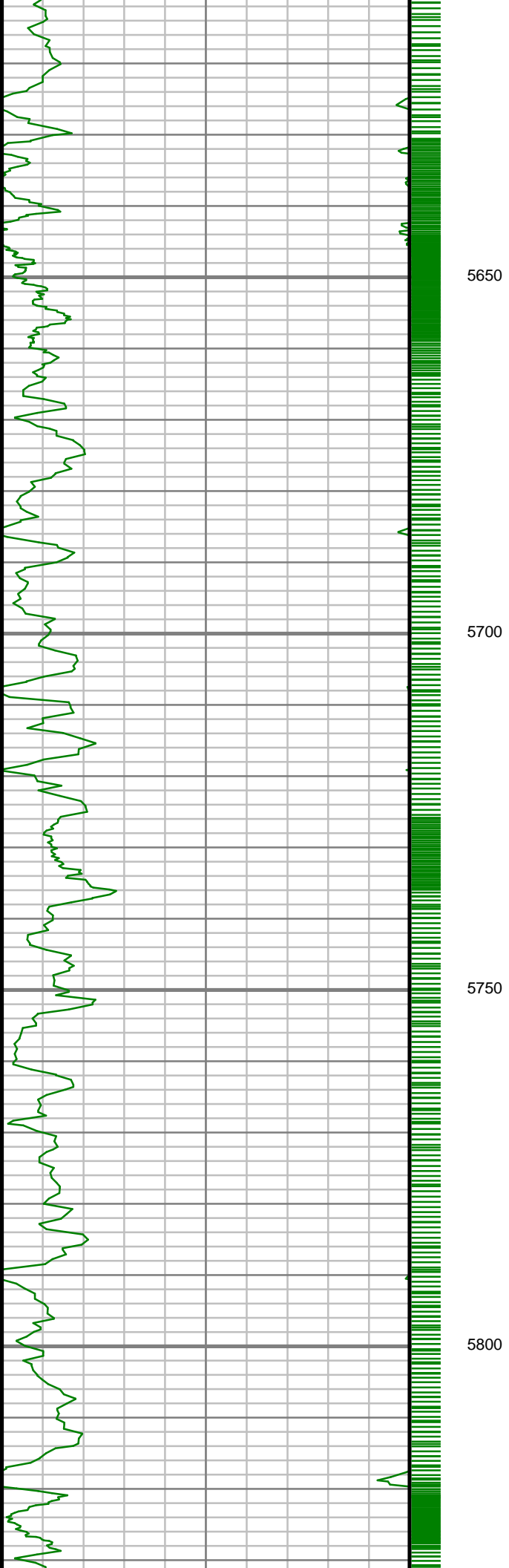
5300

5350



S: 33 MD: 5242.00 ft Inc: 9.28  
deg Az: 74.71 deg TVD:  
5175.65 ft



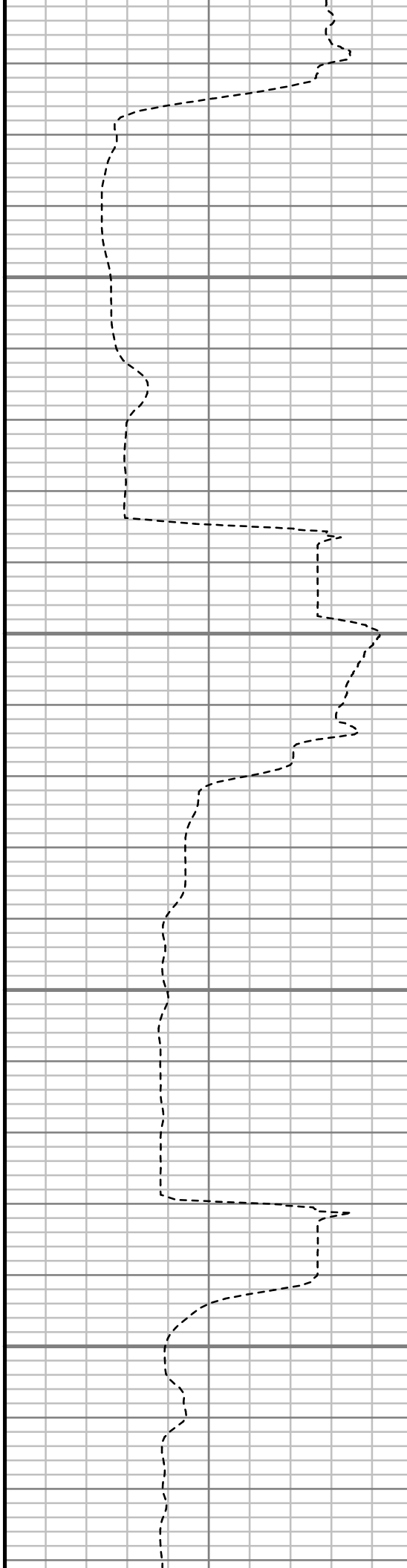


5650

5700

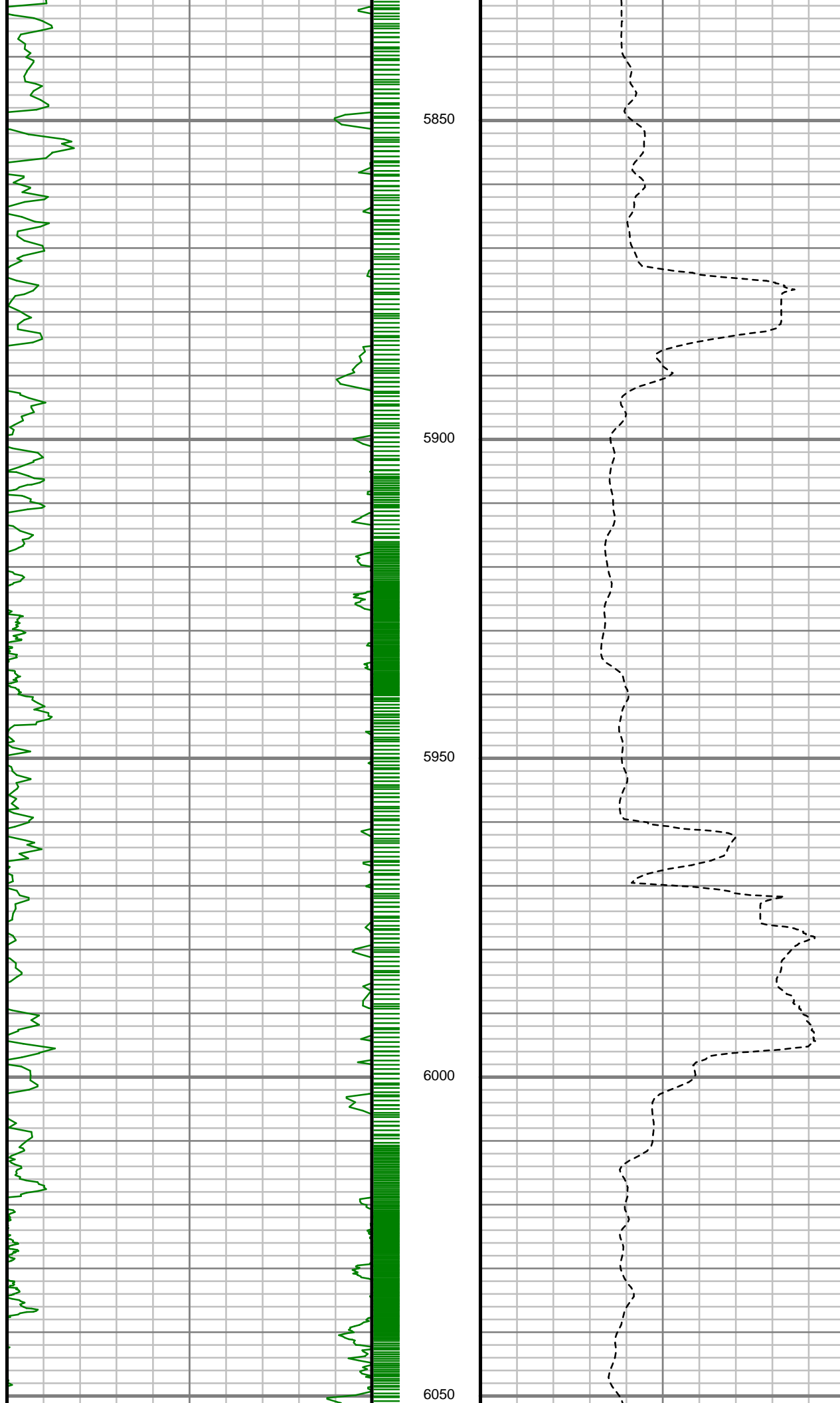
5750

5800

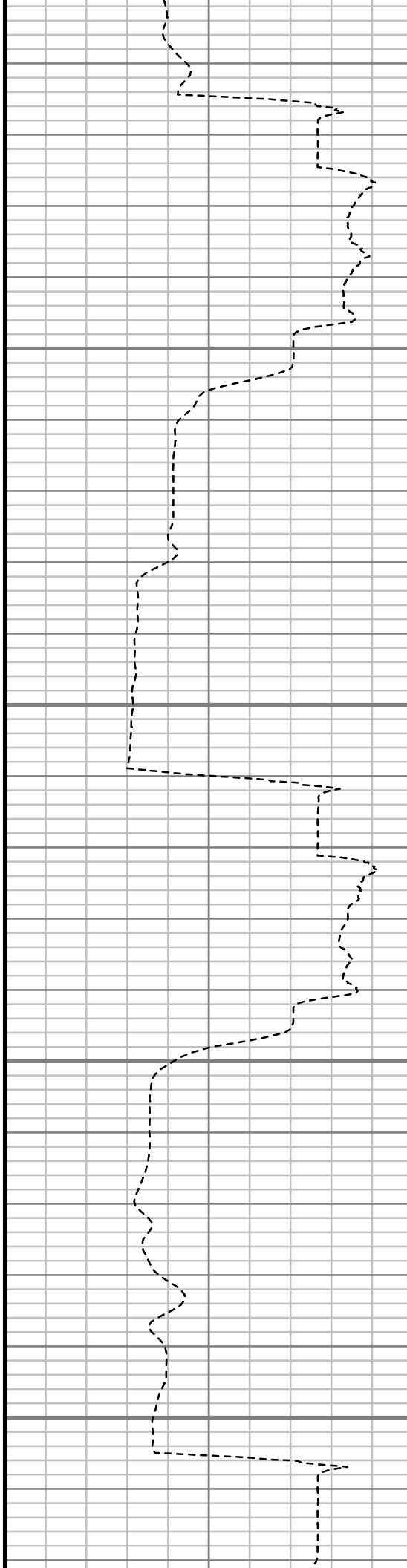
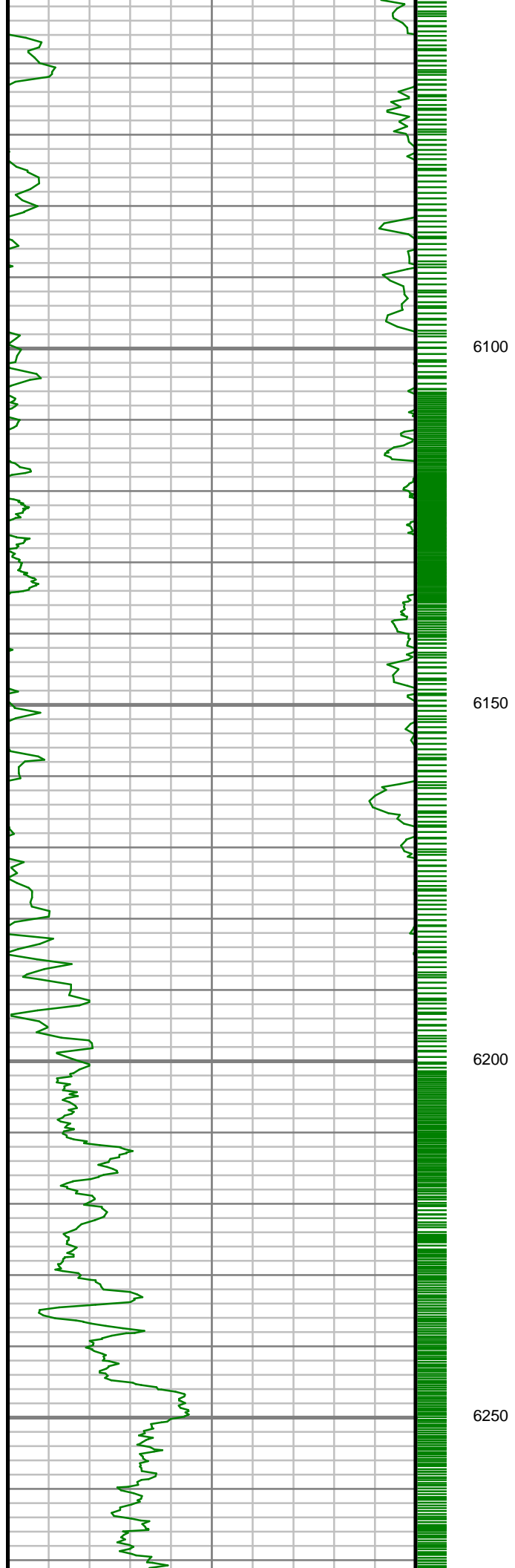


S: 35 MD: 5621.00 ft Inc: 8.64  
deg Az: 70.87 deg TVD:  
5550.02 ft

S: 36 MD: 5811.00 ft Inc: 6.68  
deg Az: 71.03 deg TVD:  
5738.31 ft

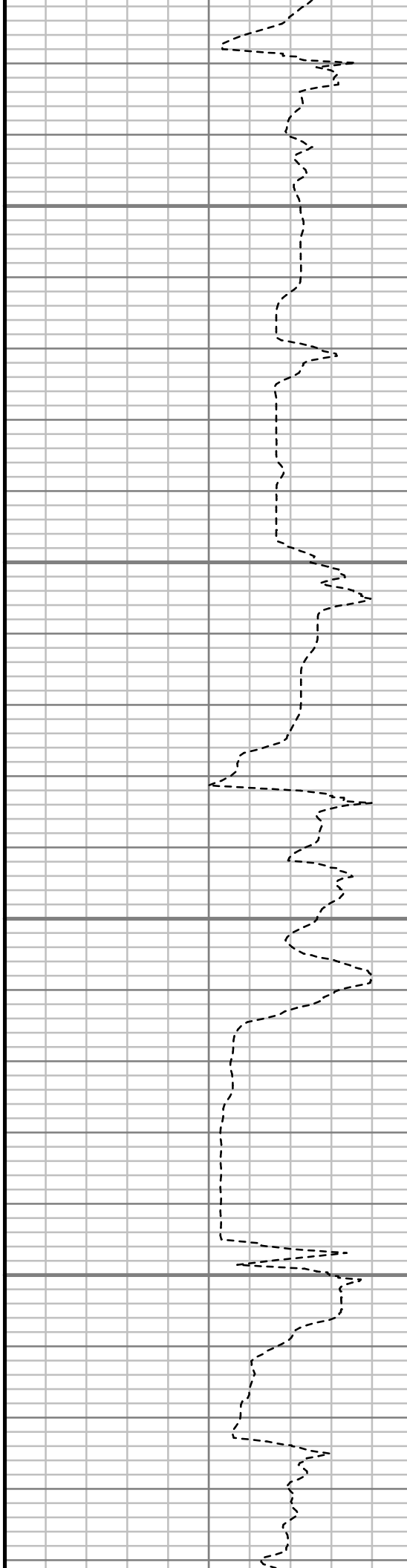
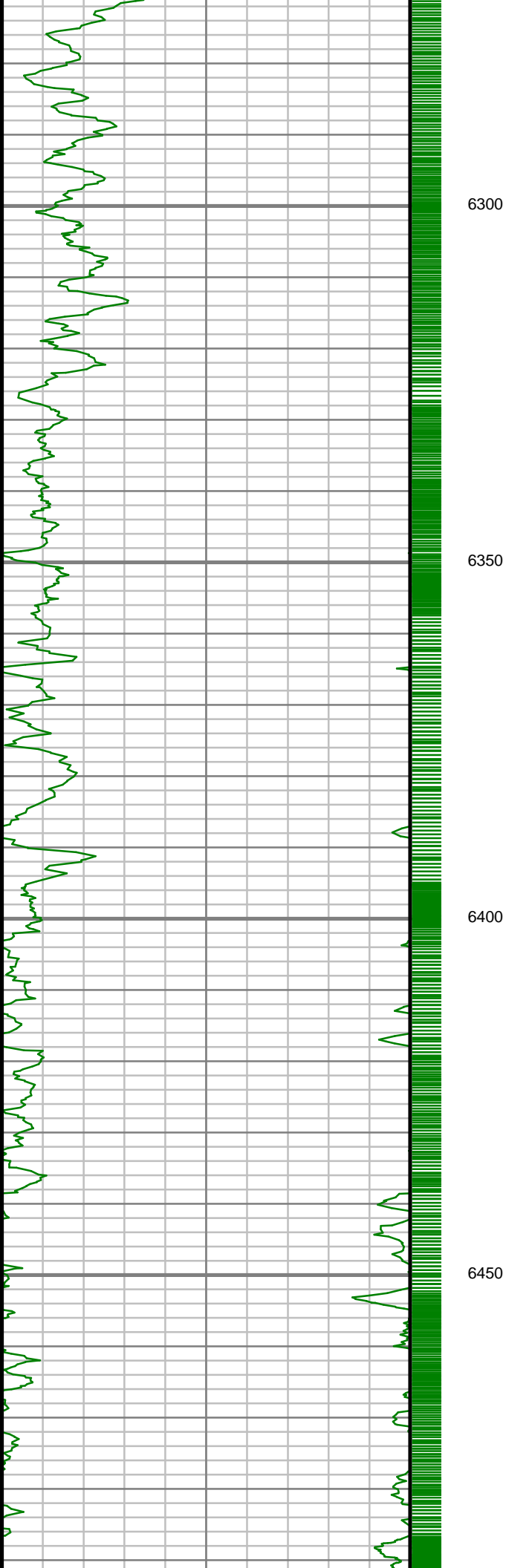


S: 37 MD: 6000.00 ft Inc: 3.90  
deg Az: 72.40 deg TVD:  
5926.49 ft



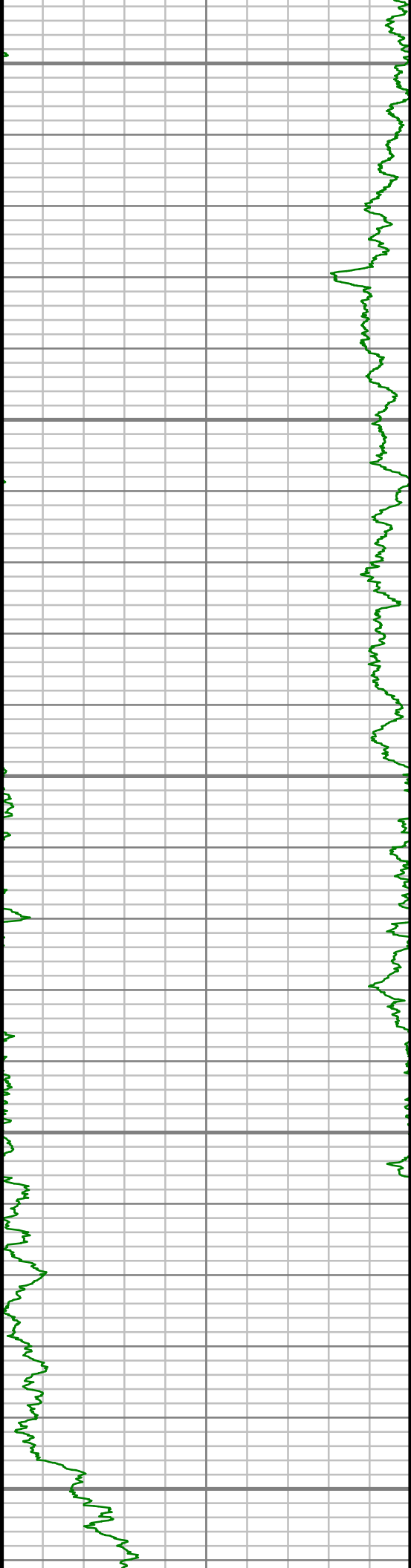
S: 38 MD: 6190.00 ft Inc: 0.71  
deg Az: 206.48 deg TVD:  
6116.36 ft





S: 39 MD: 6379.00 ft Inc: 0.76  
deg Az: 125.03 deg TVD:  
6305.35 ft

S: 40 MD: 6474.00 ft Inc: 0.54  
deg Az: 43.23 deg TVD:  
6400.34 ft



6500

6550

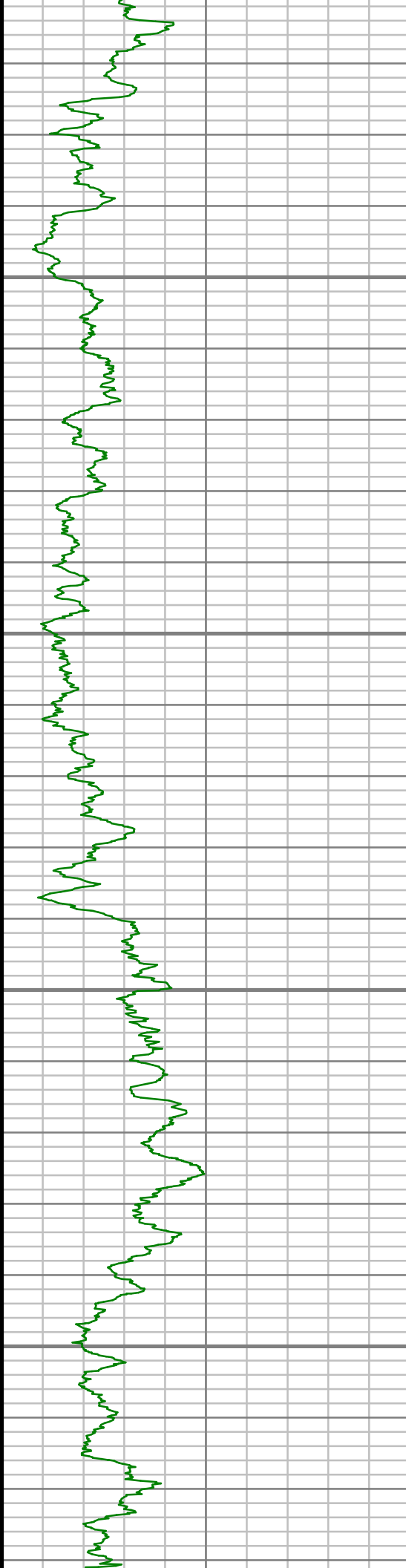
6600

6650

6700

S: 41 MD: 6569.00 ft Inc: 0.58  
deg Az: 27.05 deg TVD:  
6495.34 ft

S: 42 MD: 6663.00 ft Inc: 3.39  
deg Az: 147.48 deg TVD:  
6589.29 ft



6750

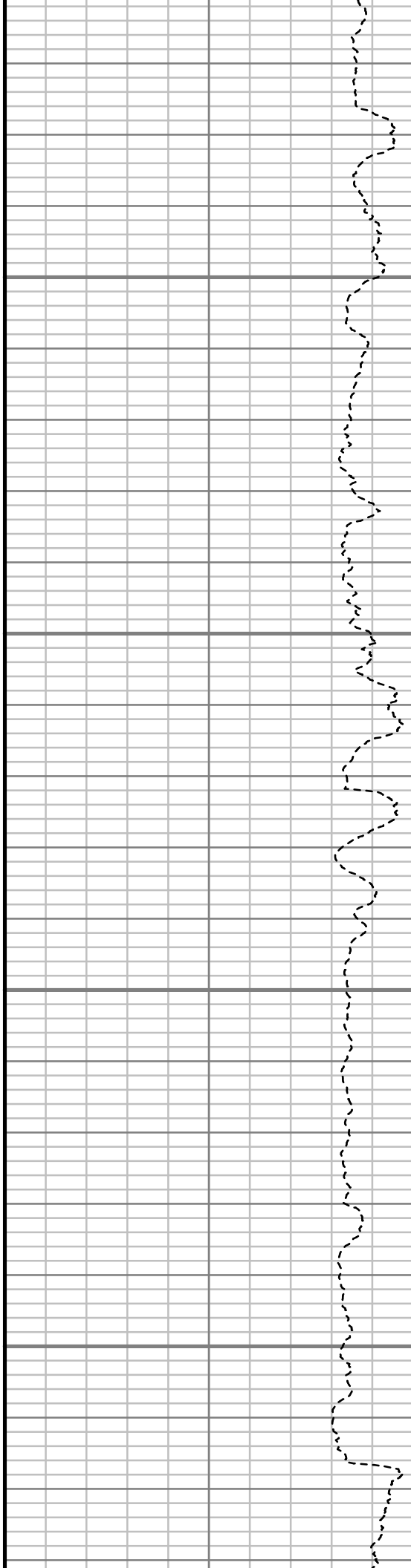
6800

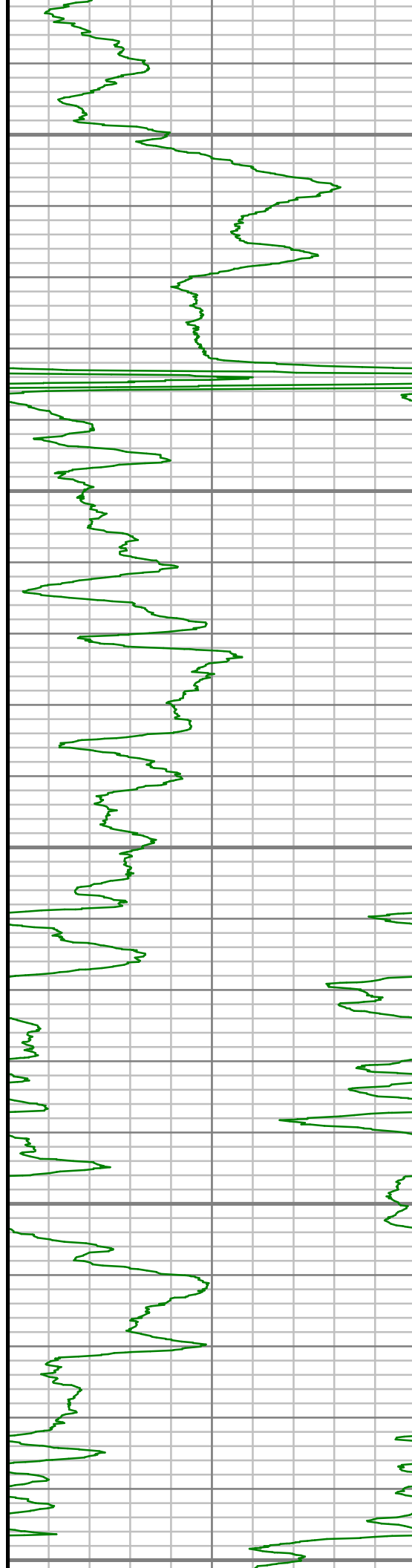
6850

6900

S: 43 MD: 6758.00 ft Inc: 8.79  
deg Az: 159.19 deg TVD:  
6683.72 ft

S: 44 MD: 6852.00 ft Inc: 13.44  
deg Az: 162.88 deg TVD:  
6775.93 ft





6950

7000

7050

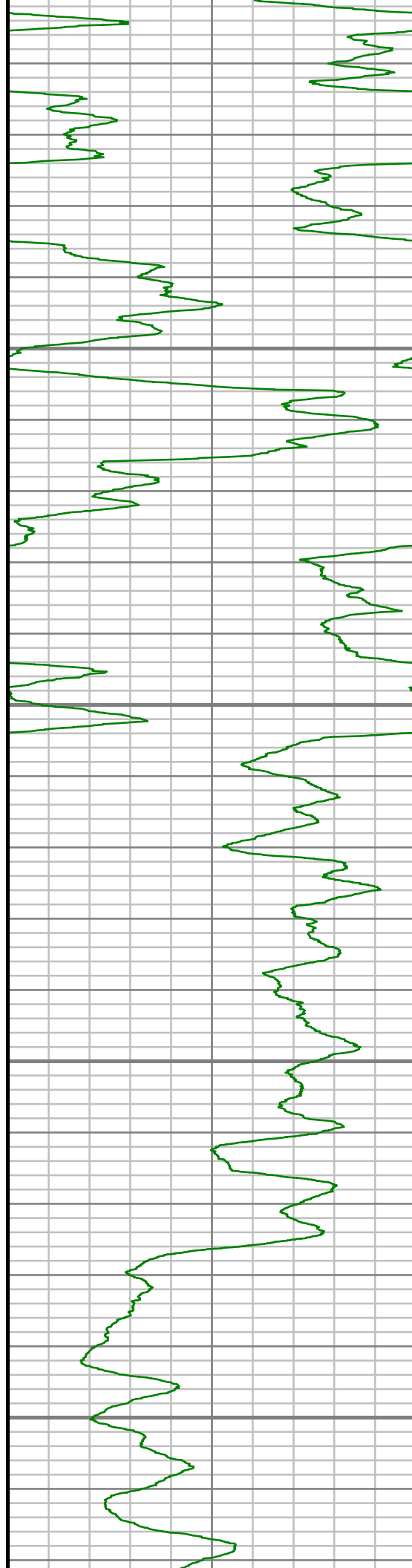
7100

7150

S: 45 MD: 6947.00 ft Inc: 21.41  
deg Az: 166.88 deg TVD:  
6866.50 ft

S: 46 MD: 7042.00 ft Inc: 30.40  
deg Az: 169.17 deg TVD:  
6951.87 ft

S: 47 MD: 7136.00 ft Inc: 39.21  
deg Az: 170.57 deg TVD:  
7028.98 ft



7200

7250

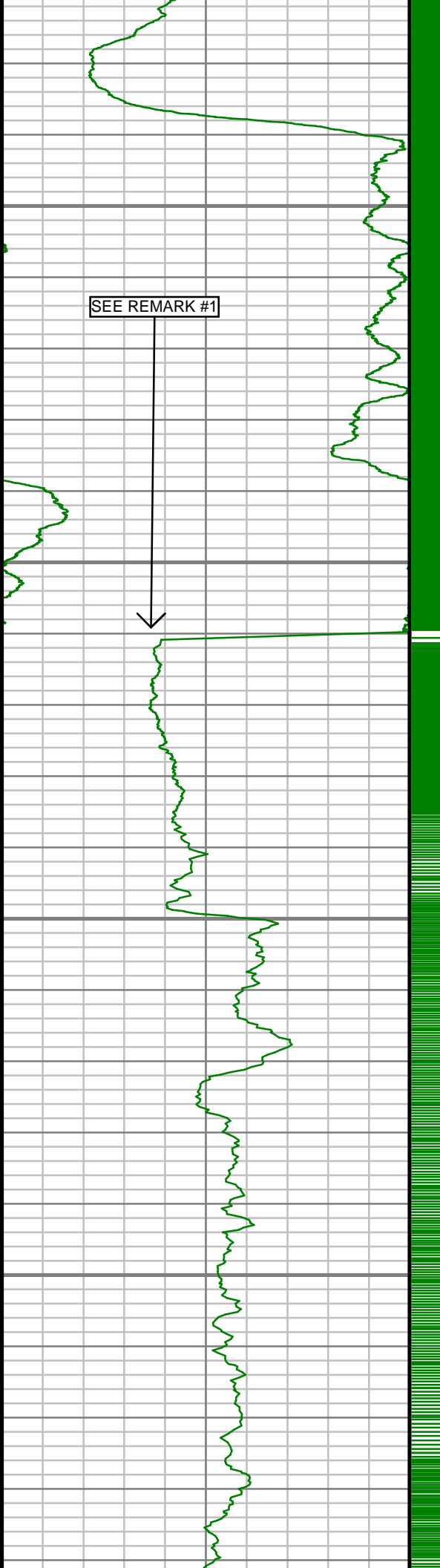
7300

7350

S: 48 MD: 7230.00 ft Inc: 49.70  
deg Az: 172.26 deg TVD:  
7095.98 ft

S: 49 MD: 7273.00 ft Inc: 58.05  
deg Az: 172.36 deg TVD:  
7121.31 ft

S: 50 MD: 7325.00 ft Inc: 66.44  
deg Az: 173.19 deg TVD:  
7145.51 ft



7400

7450

7500

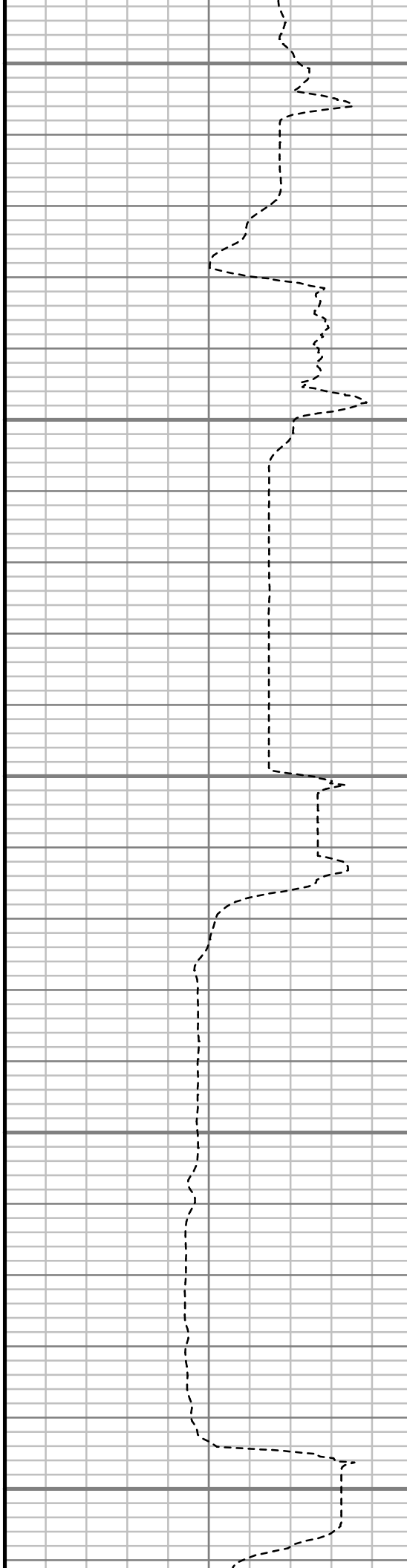
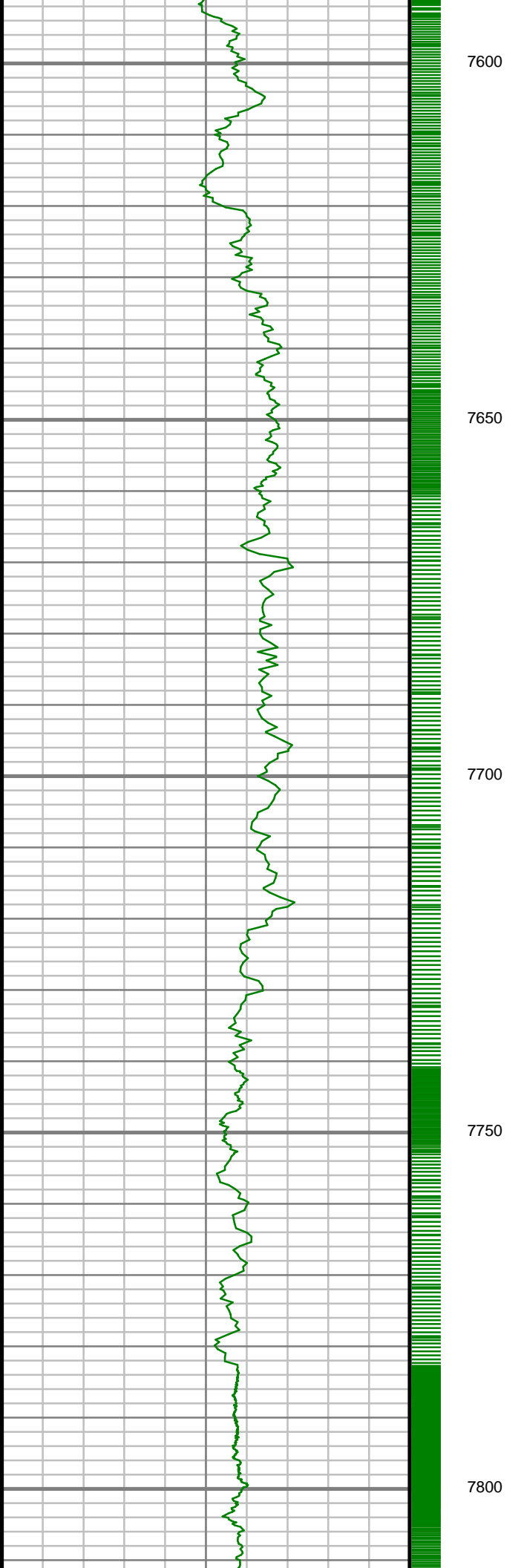
7550

S: 51 MD: 7372.00 ft Inc: 74.62  
deg Az: 176.31 deg TVD:  
7161.16 ft

S: 52 MD: 7419.00 ft Inc: 82.02  
deg Az: 180.01 deg TVD:  
7170.68 ft

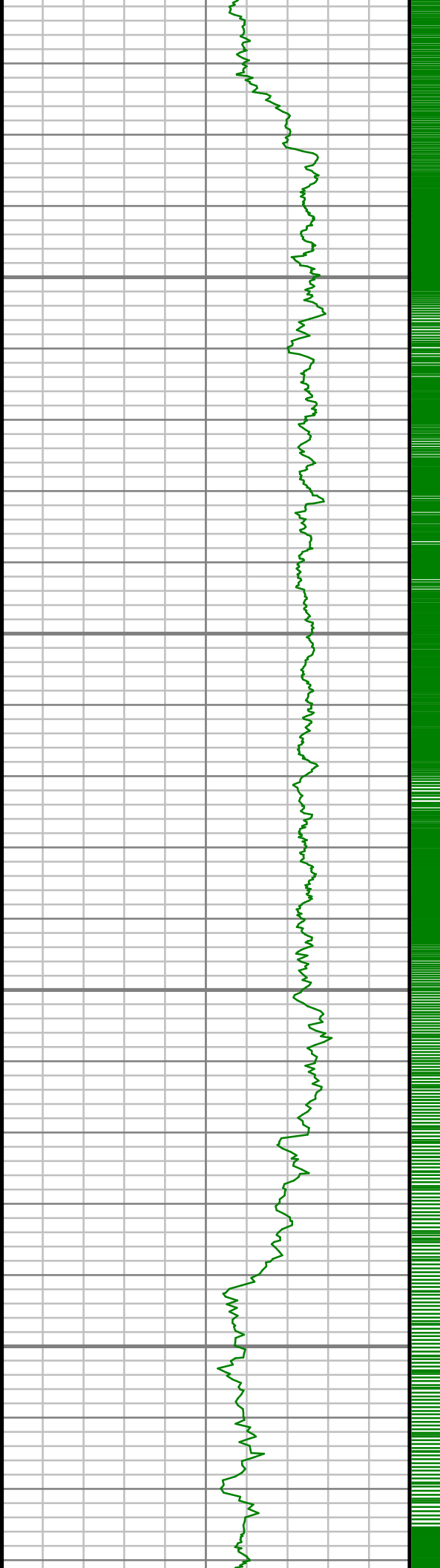
S: 53 MD: 7449.00 ft Inc: 85.32  
deg Az: 180.89 deg TVD:  
7173.99 ft

S: 54 MD: 7541.00 ft Inc: 89.80  
deg Az: 182.56 deg TVD:  
7177.90 ft



S: 55 MD: 7635.00 ft Inc: 90.40  
deg Az: 183.15 deg TVD:  
7177.74 ft

S: 56 MD: 7730.00 ft Inc: 90.20  
deg Az: 182.87 deg TVD:  
7177.24 ft

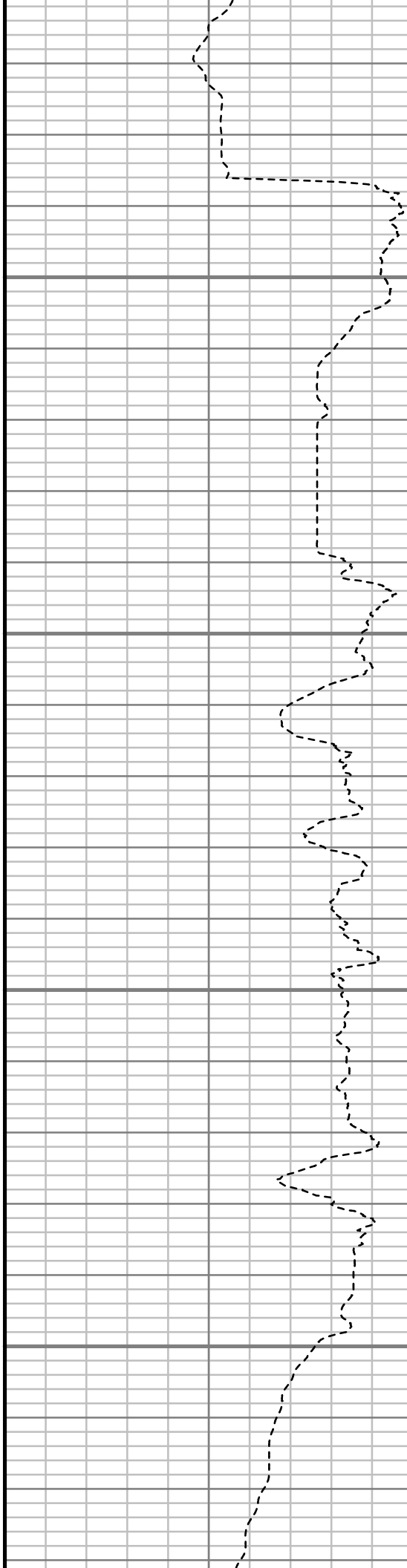


7850

7900

7950

8000

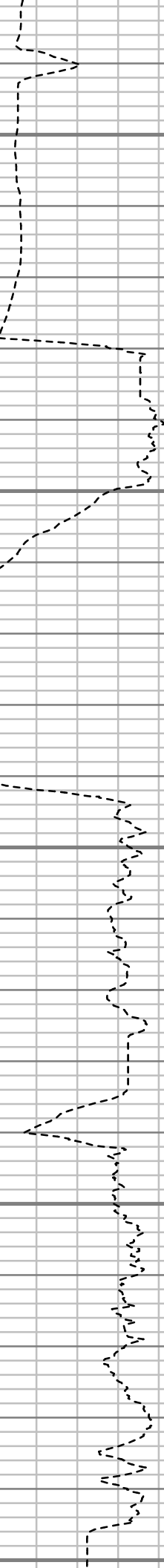
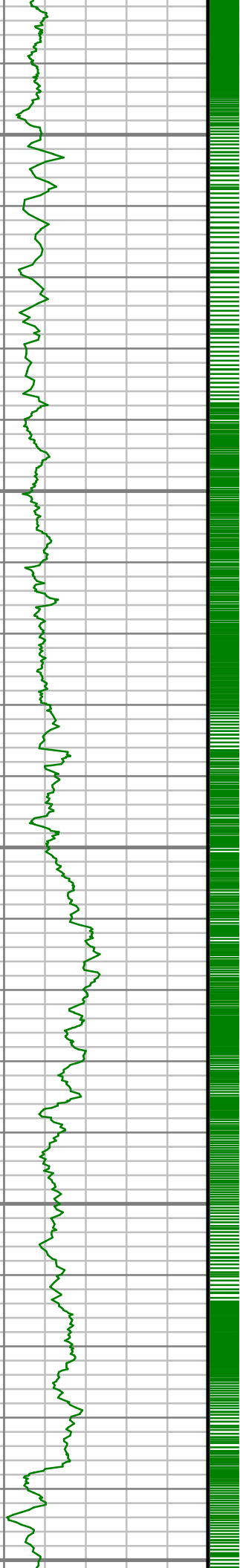


S: 57 MD: 7825.00 ft Inc: 89.83  
deg Az: 183.07 deg TVD:  
7177.21 ft

S: 58 MD: 7920.00 ft Inc: 91.71  
deg Az: 183.12 deg TVD:  
7175.93 ft

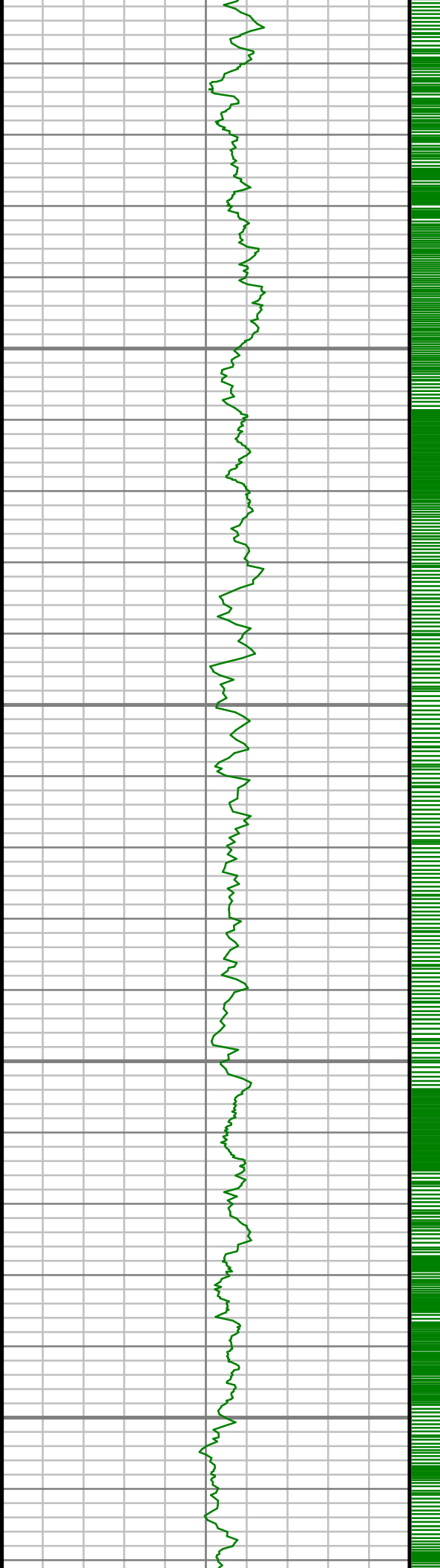
S: 59 MD: 8014.00 ft Inc: 91.17  
deg Az: 183.12 deg TVD:  
7173.56 ft





S: 60 MD: 8109.00 ft Inc: 92.08  
deg Az: 183.41 deg TVD:  
7170.86 ft

S: 61 MD: 8204.00 ft Inc: 91.55  
deg Az: 183.16 deg TVD:  
7167.85 ft

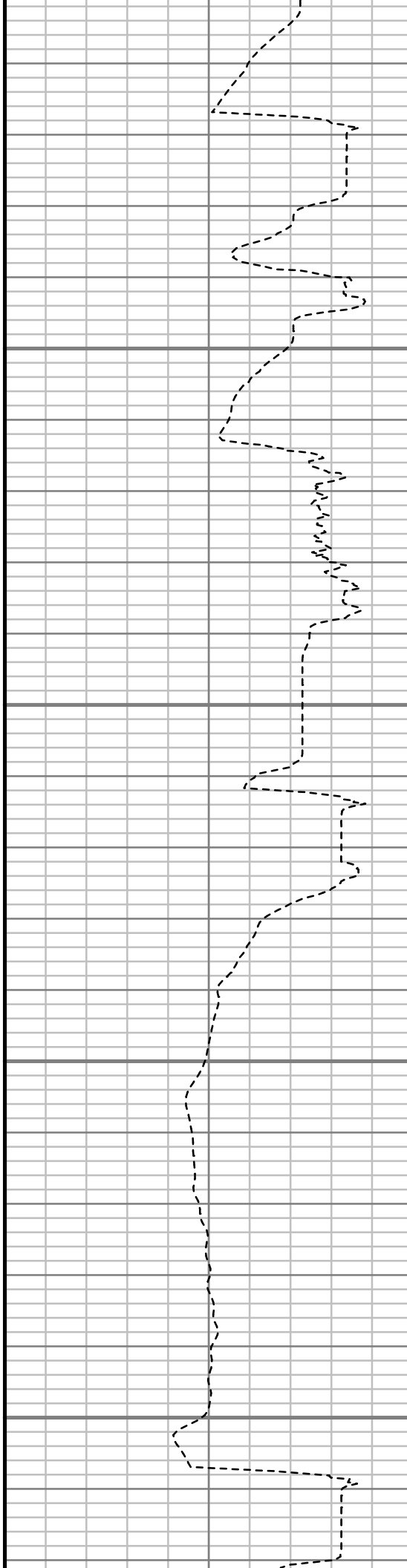


8300

8350

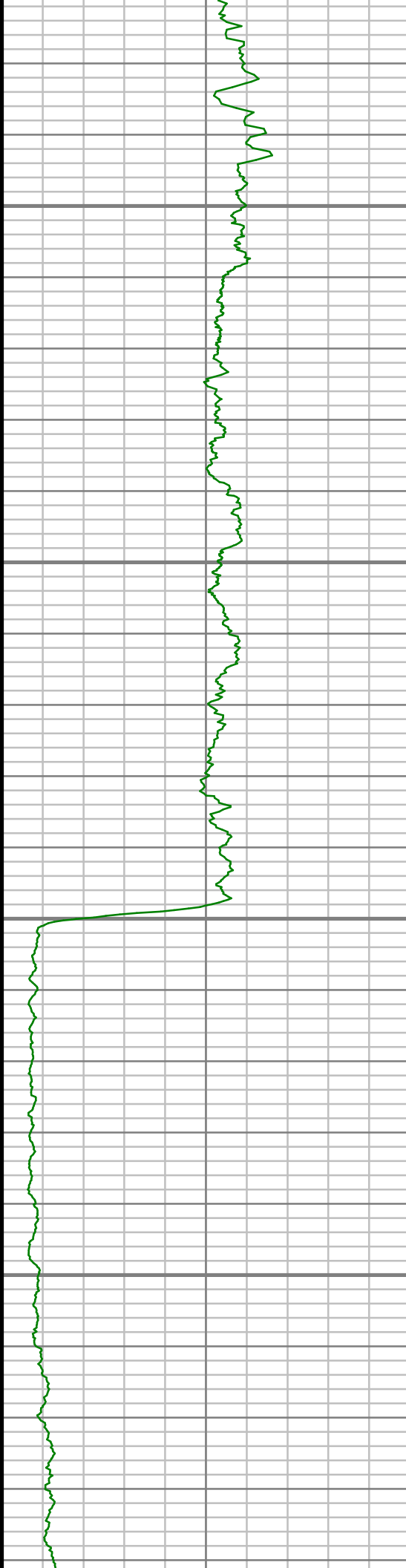
8400

8450



S: 62 MD: 8299.00 ft Inc: 90.74  
deg Az: 182.88 deg TVD:  
7165.96 ft

S: 63 MD: 8393.00 ft Inc: 90.70  
deg Az: 183.00 deg TVD:  
7164.77 ft

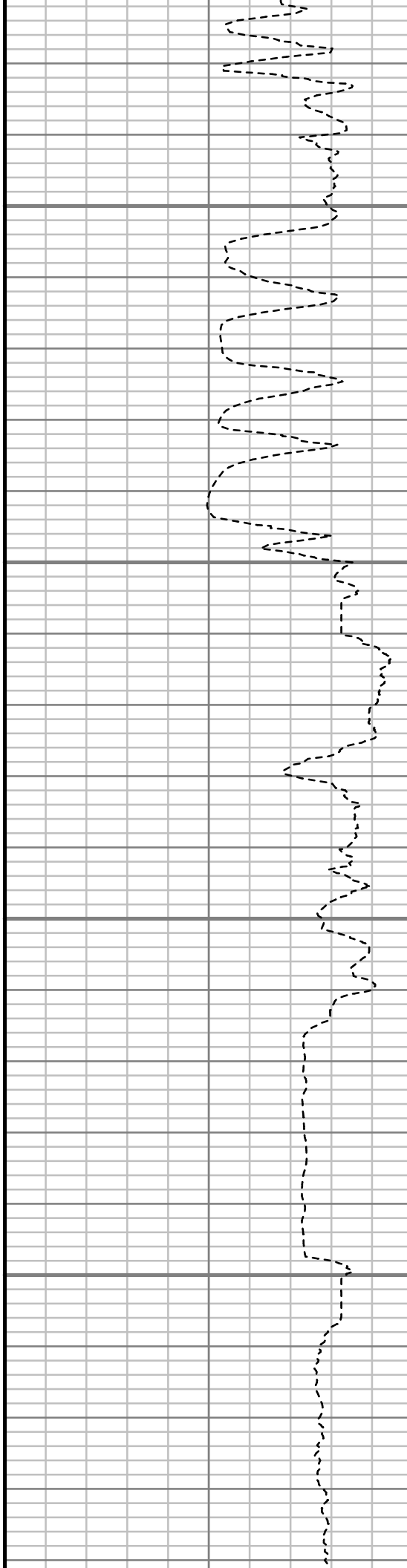


8500

8550

8600

8650



S: 64 MD: 8488.00 ft Inc: 90.30  
deg Az: 182.60 deg TVD:  
7163.94 ft

S: 65 MD: 8582.00 ft Inc: 90.74  
deg Az: 181.71 deg TVD:  
7163.09 ft

S: 66 MD: 8676.00 ft Inc: 90.97  
deg Az: 181.19 deg TVD:  
7161.68 ft



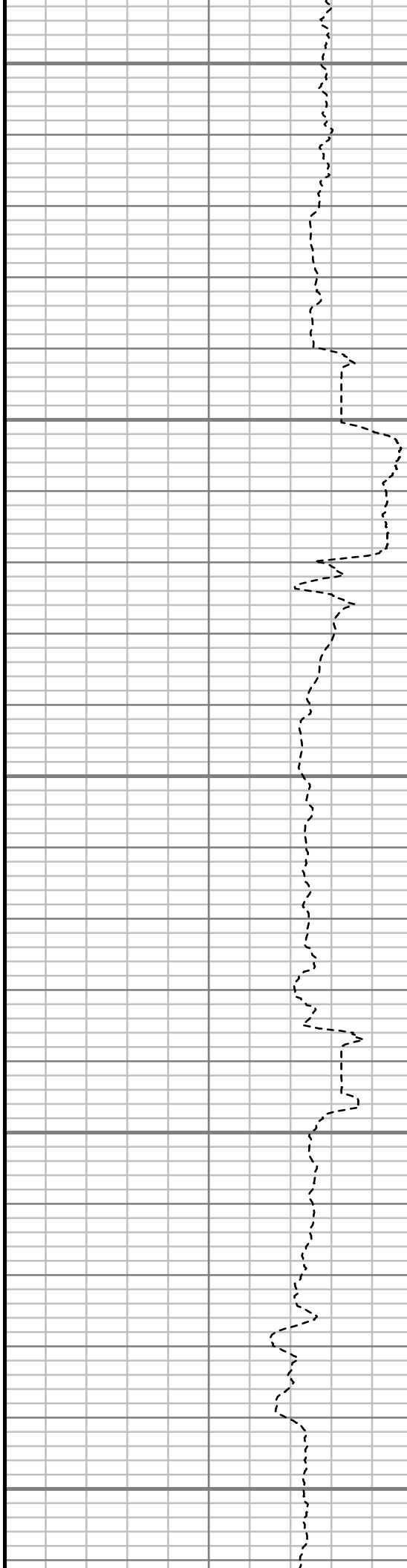
8700

8750

8800

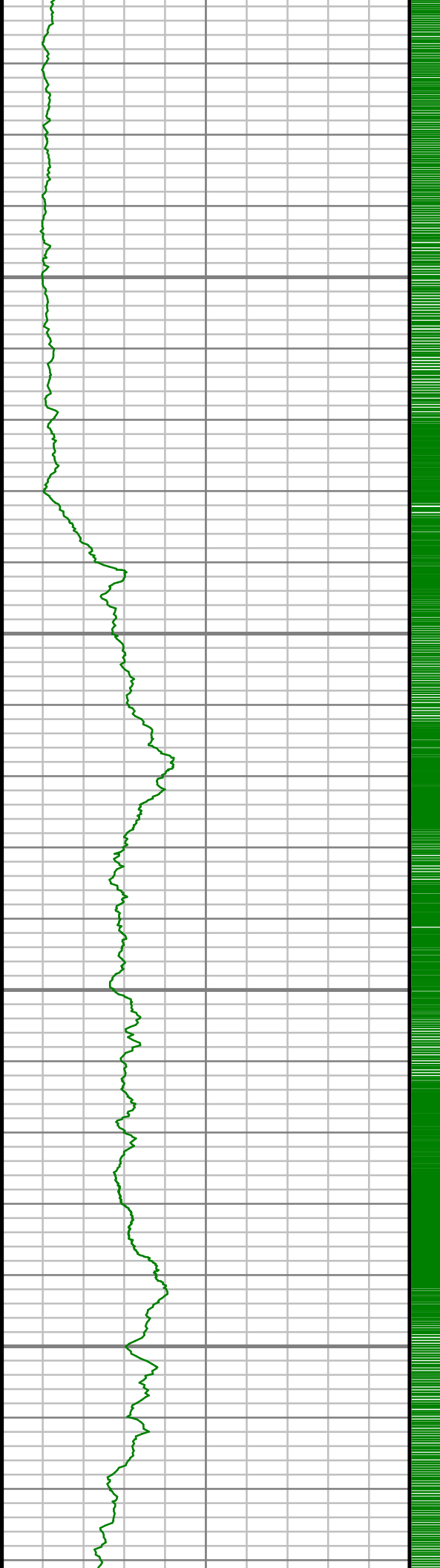
8850

8900



S: 67 MD: 8771.00 ft Inc: 89.60  
deg Az: 179.78 deg TVD:  
7161.21 ft

S: 68 MD: 8866.00 ft Inc: 90.07  
deg Az: 179.57 deg TVD:  
7161.49 ft



8950

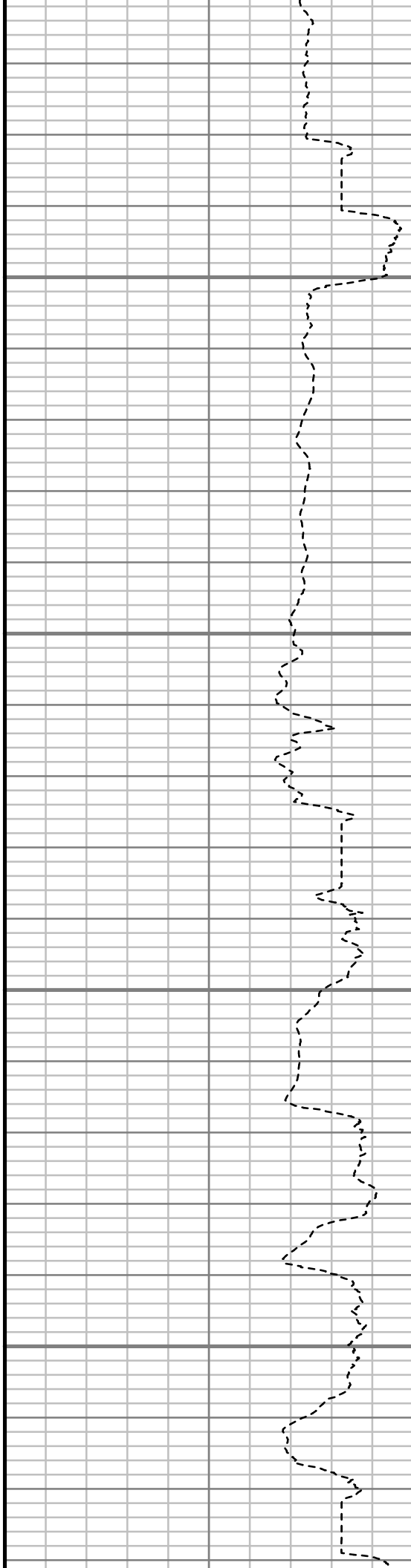
9000

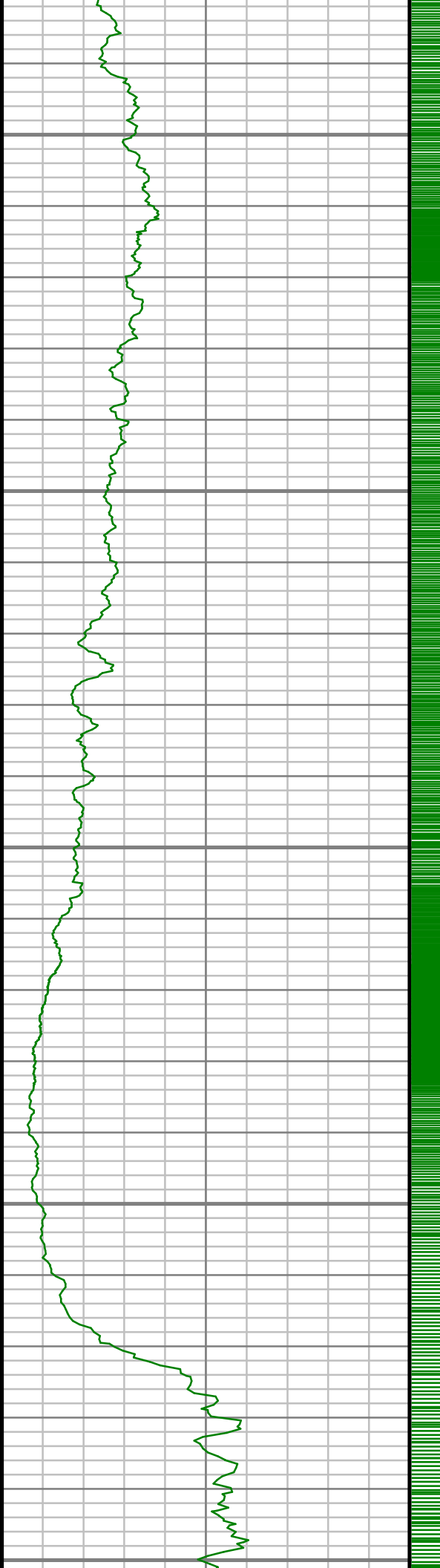
9050

9100

S: 69 MD: 8960.00 ft Inc: 89.56  
deg Az: 179.65 deg TVD:  
7161.79 ft

S: 70 MD: 9055.00 ft Inc: 90.64  
deg Az: 180.33 deg TVD:  
7161.62 ft





9150

9200

9250

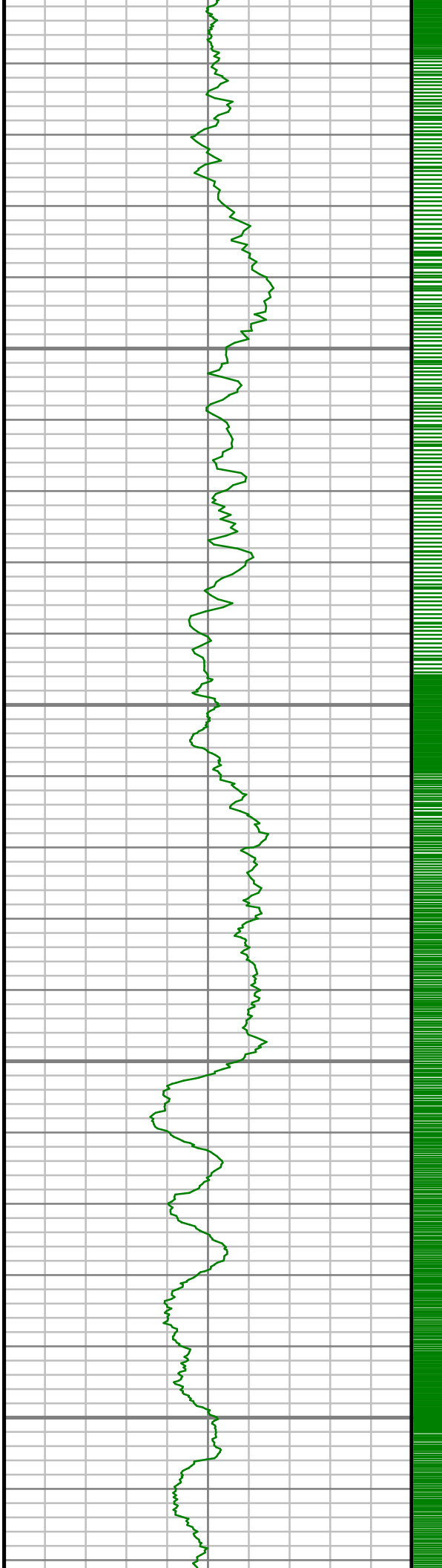
9300

9350

S: 71 MD: 9150.00 ft Inc: 90.10  
deg Az: 180.66 deg TVD:  
7161.01 ft

S: 72 MD: 9245.00 ft Inc: 91.34  
deg Az: 180.94 deg TVD:  
7159.82 ft

S: 73 MD: 9339.00 ft Inc: 89.60  
deg Az: 180.53 deg TVD:  
7159.05 ft

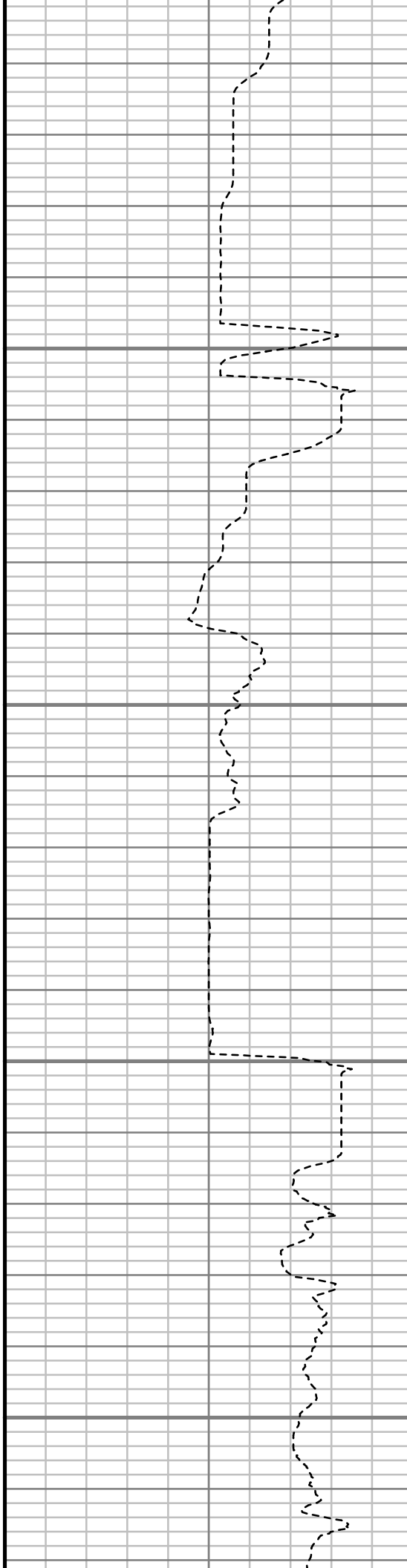


9400

9450

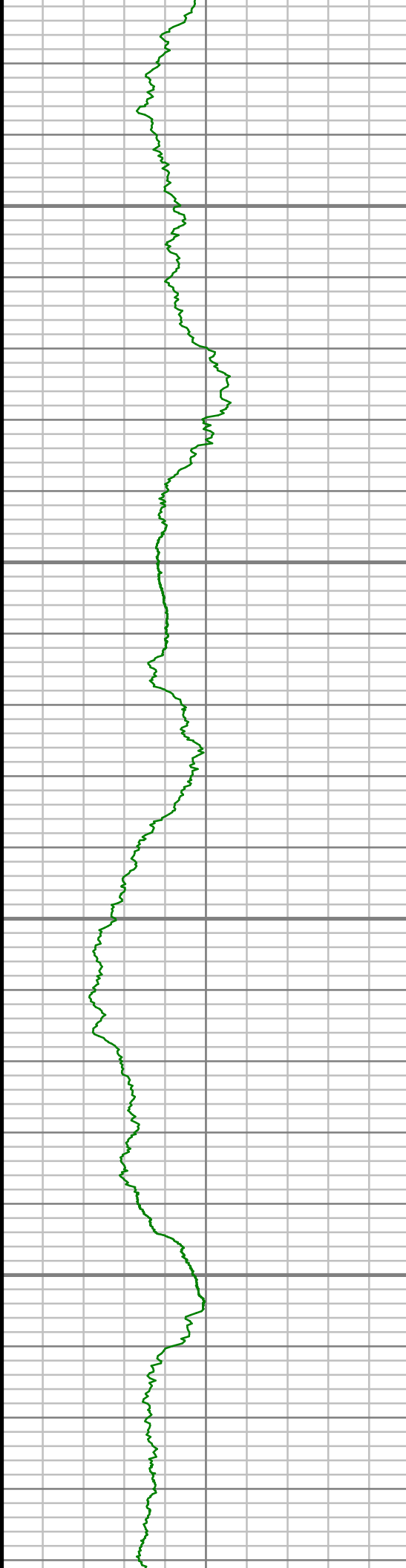
9500

9550



S: 74 MD: 9434.00 ft Inc: 89.73  
deg Az: 180.44 deg TVD:  
7159.60 ft

S: 75 MD: 9529.00 ft Inc: 88.99  
deg Az: 180.48 deg TVD:  
7160.66 ft

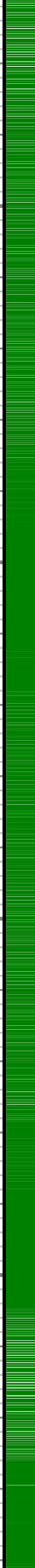


9600

9650

9700

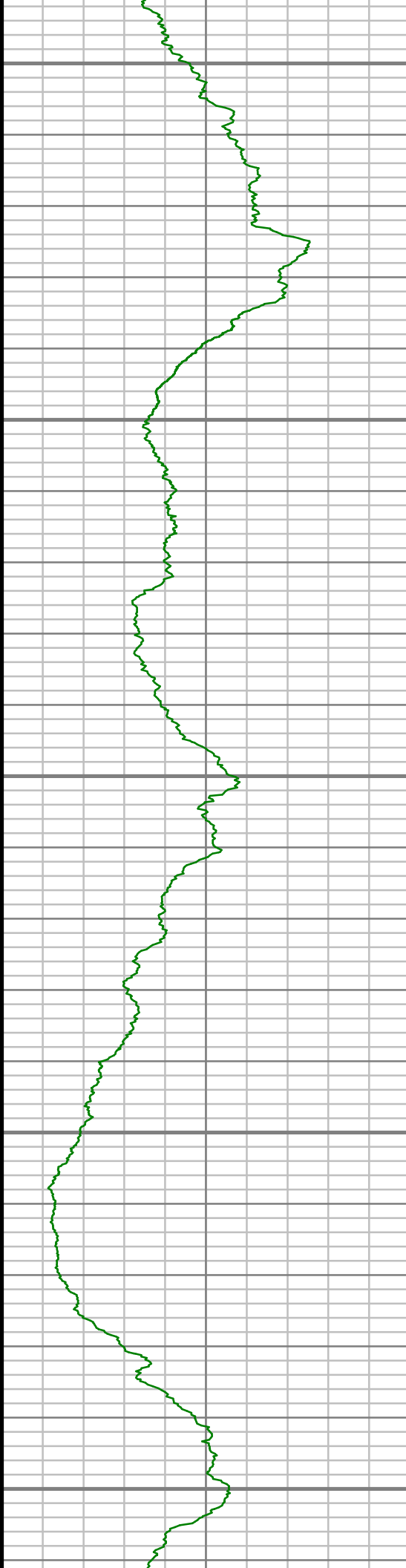
9750



S: 76 MD: 9624.00 ft Inc: 88.09  
deg Az: 179.72 deg TVD:  
7163.08 ft

S: 77 MD: 9719.00 ft Inc: 89.19  
deg Az: 179.84 deg TVD:  
7165.34 ft





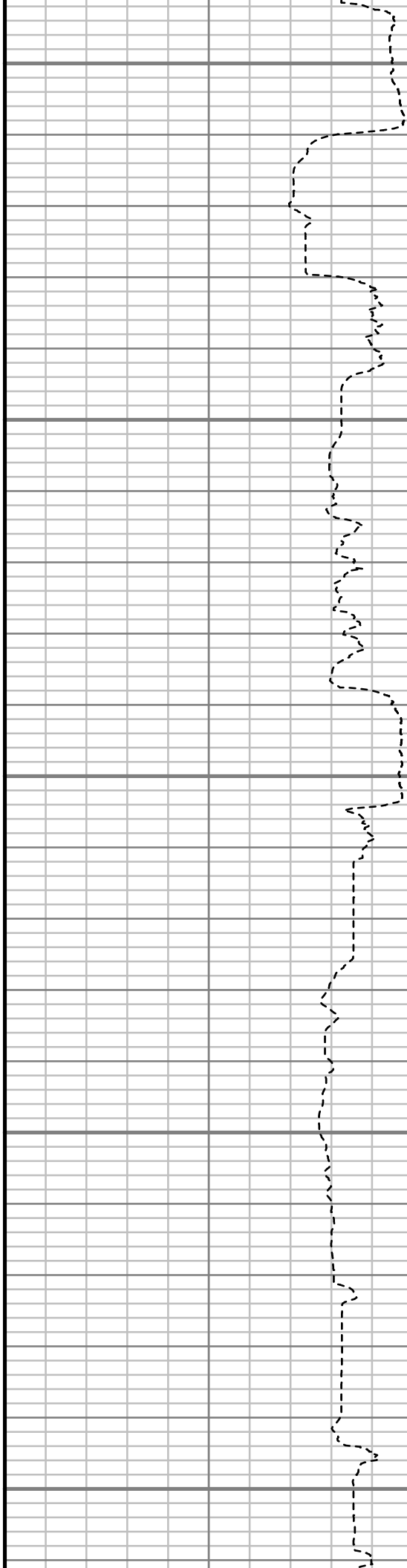
9800

9850

9900

9950

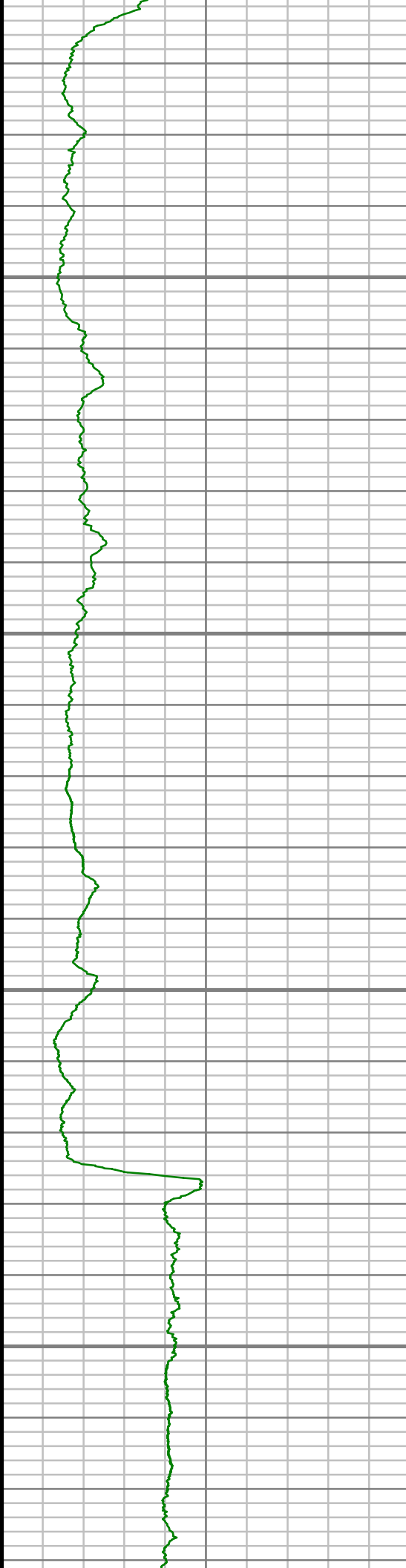
10000



S: 78 MD: 9813.00 ft Inc: 90.07  
deg Az: 180.16 deg TVD:  
7165.94 ft

S: 79 MD: 9908.00 ft Inc: 90.91  
deg Az: 180.46 deg TVD:  
7165.14 ft

S: 80 MD: 10003.00 ft Inc:  
90.77 deg Az: 180.98 deg TVD:  
7163.74 ft

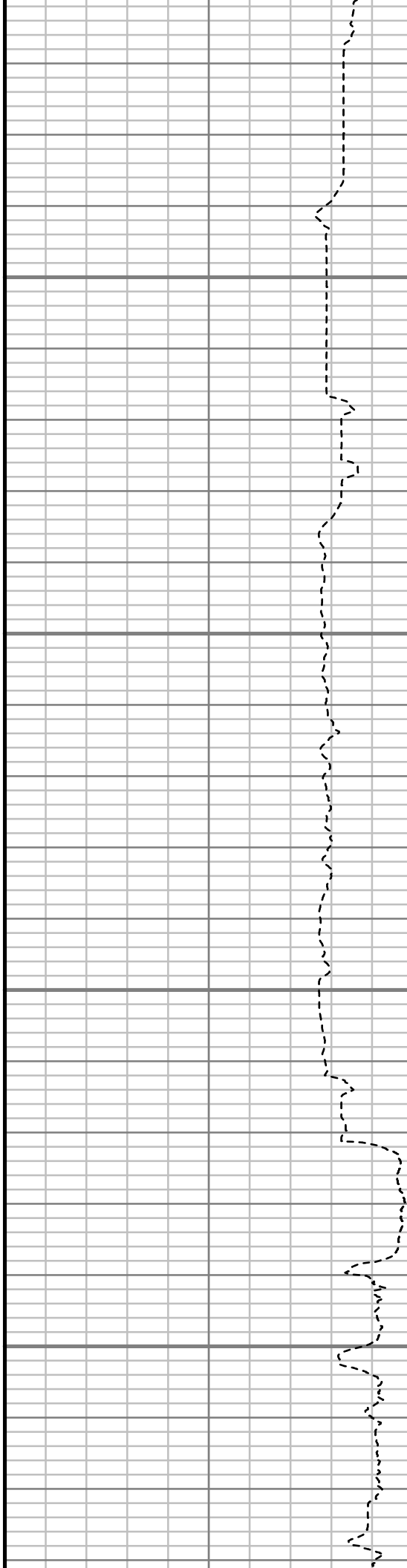


10050

10100

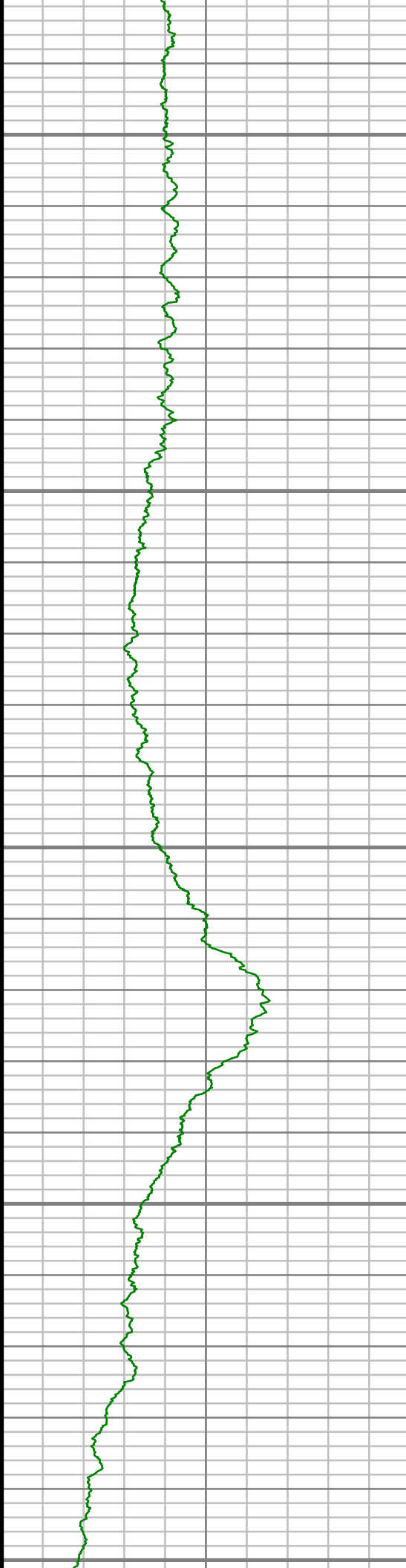
10150

10200



S: 81 MD: 10097.00 ft Inc:  
92.02 deg Az: 181.39 deg TVD:  
7161.46 ft

S: 82 MD: 10192.00 ft Inc:  
91.04 deg Az: 181.01 deg TVD:  
7158.92 ft



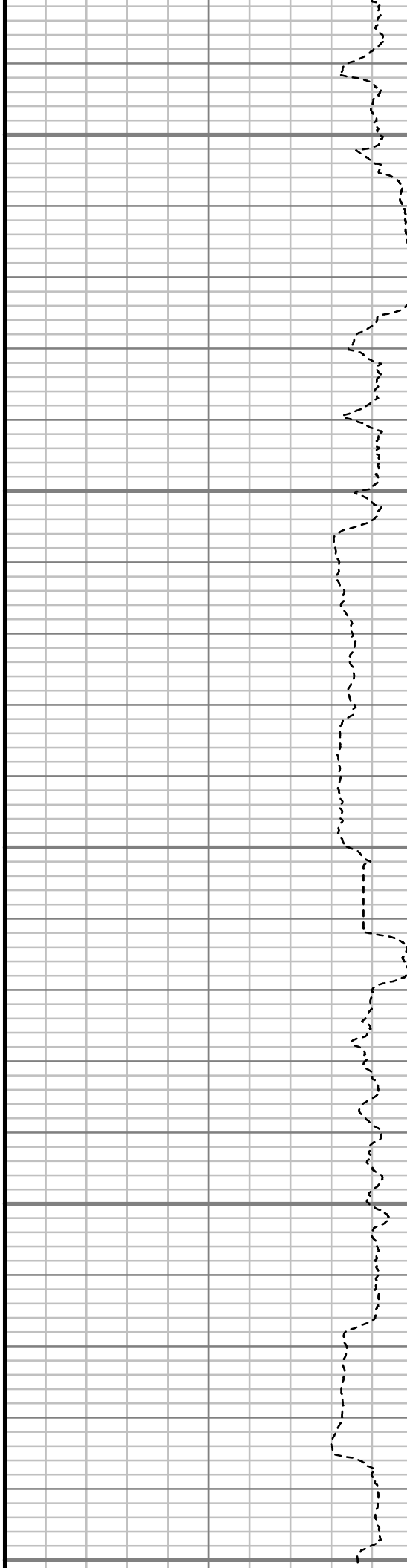
10250

10300

10350

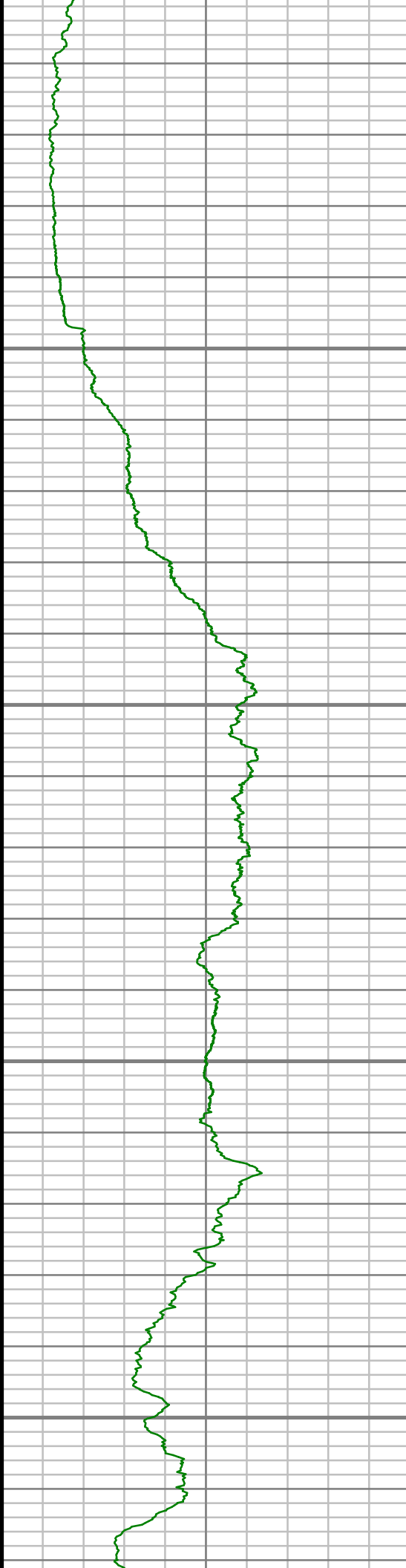
10400

10450



S: 83 MD: 10287.00 ft Inc:  
89.23 deg Az: 180.59 deg TVD:  
7158.70 ft

S: 84 MD: 10382.00 ft Inc:  
88.96 deg Az: 179.80 deg TVD:  
7160.20 ft

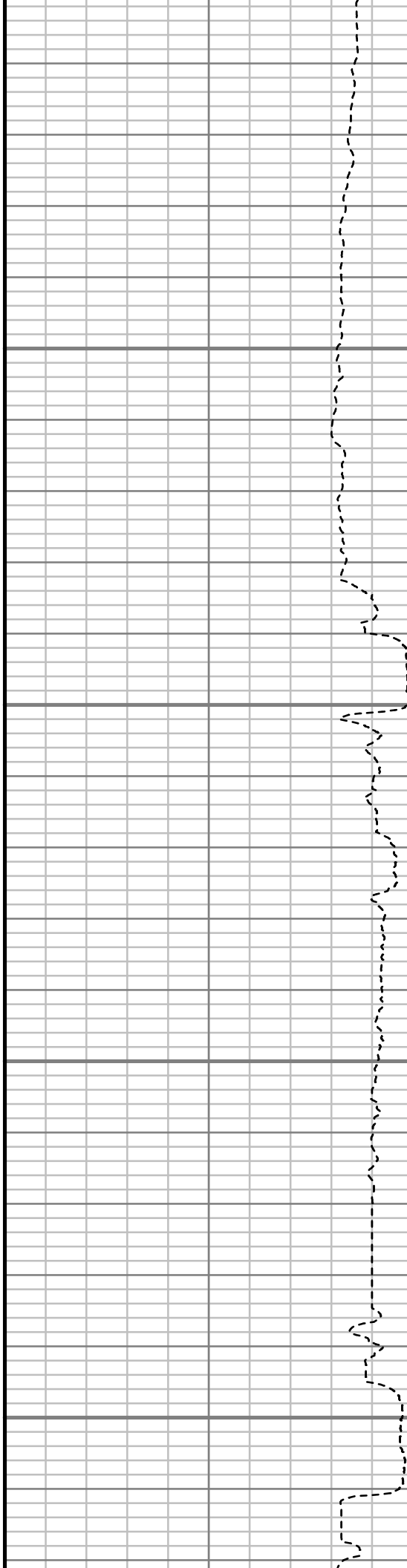


10500

10550

10600

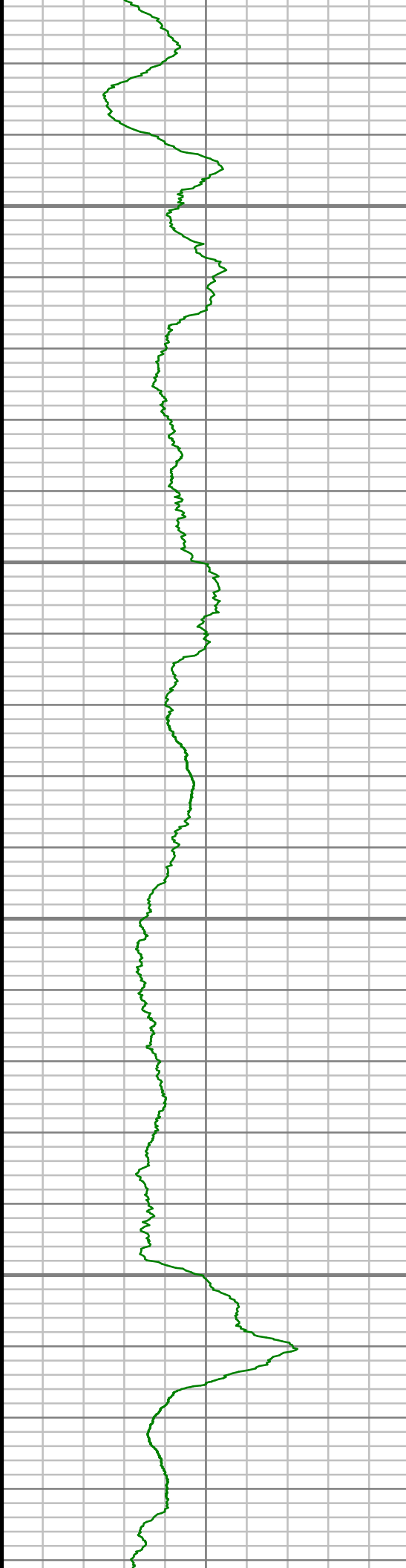
10650



S: 85 MD: 10476.00 ft Inc:  
89.97 deg Az: 179.72 deg TVD:  
7161.08 ft

S: 86 MD: 10571.00 ft Inc:  
90.10 deg Az: 179.40 deg TVD:  
7161.03 ft

S: 87 MD: 10666.00 ft Inc:  
88.05 deg Az: 178.98 deg TVD:

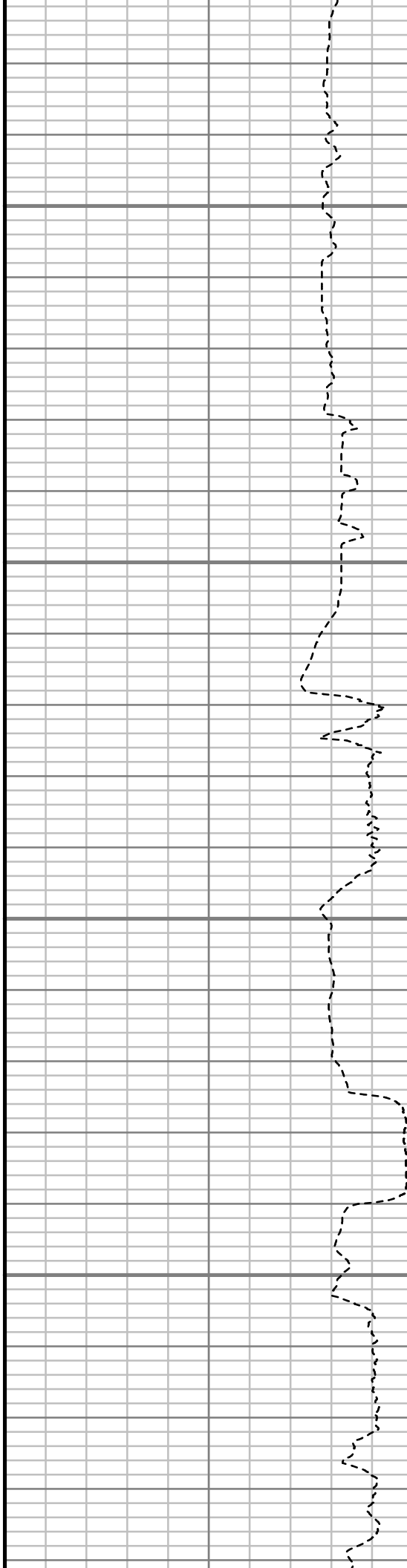


10700

10750

10800

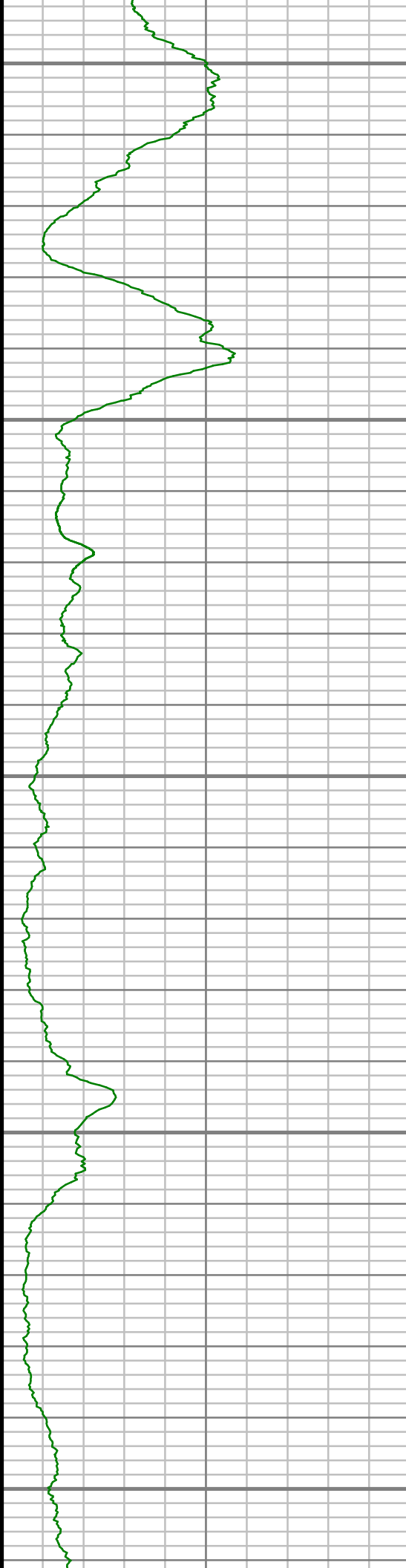
10850



7162.56 ft

S: 88 MD: 10761.00 ft Inc:  
87.48 deg Az: 179.12 deg TVD:  
7166.26 ft

S: 89 MD: 10856.00 ft Inc:  
87.95 deg Az: 179.30 deg TVD:  
7170.05 ft



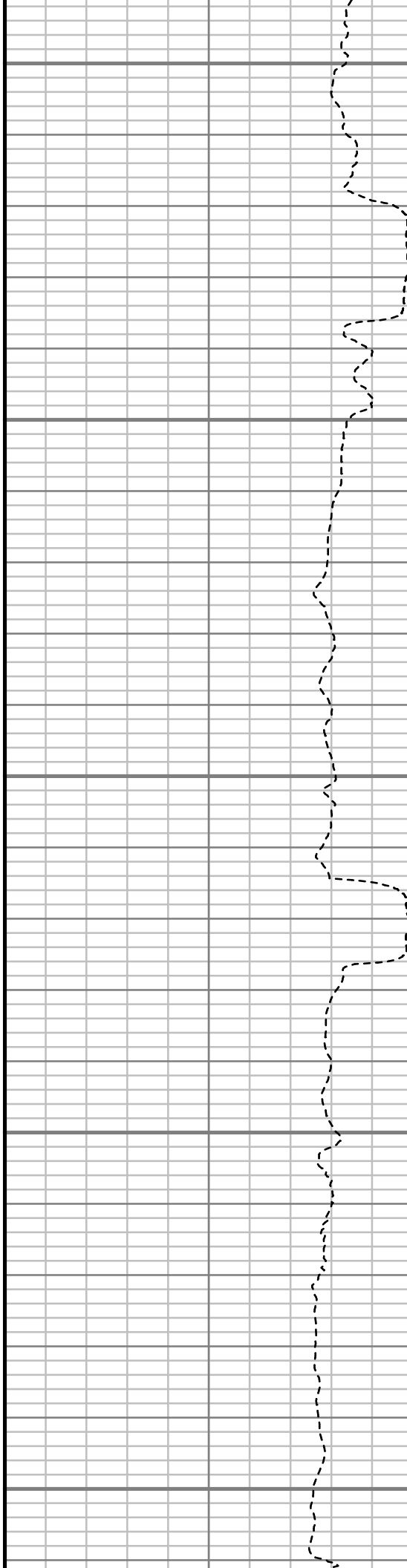
10900

10950

11000

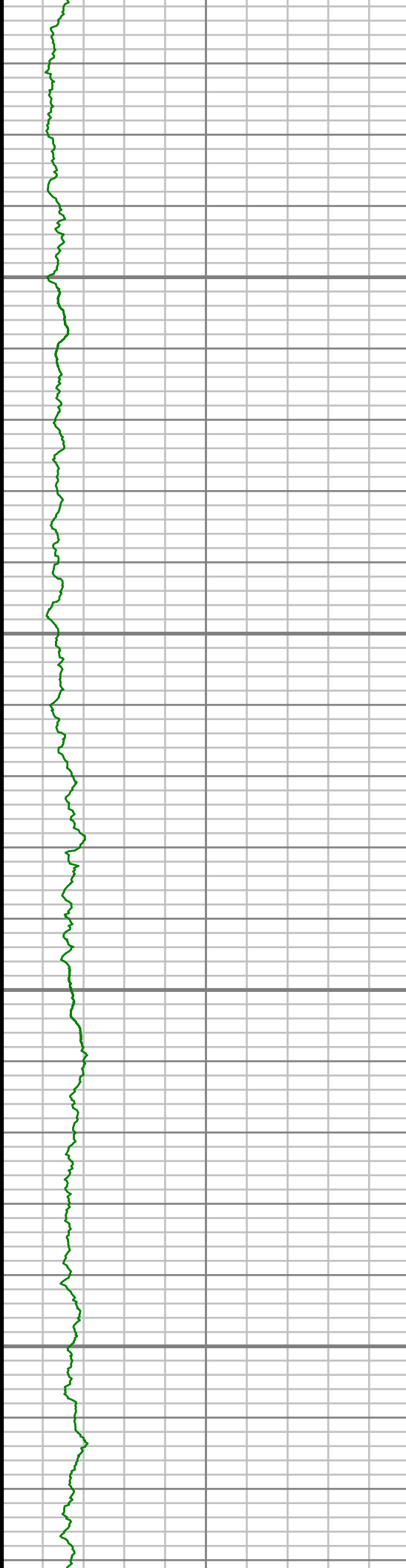
11050

11100



S: 90 MD: 10951.00 ft Inc:  
88.99 deg Az: 179.44 deg TVD:  
7172.59 ft

S: 91 MD: 11045.00 ft Inc:  
90.84 deg Az: 178.77 deg TVD:  
7172.72 ft

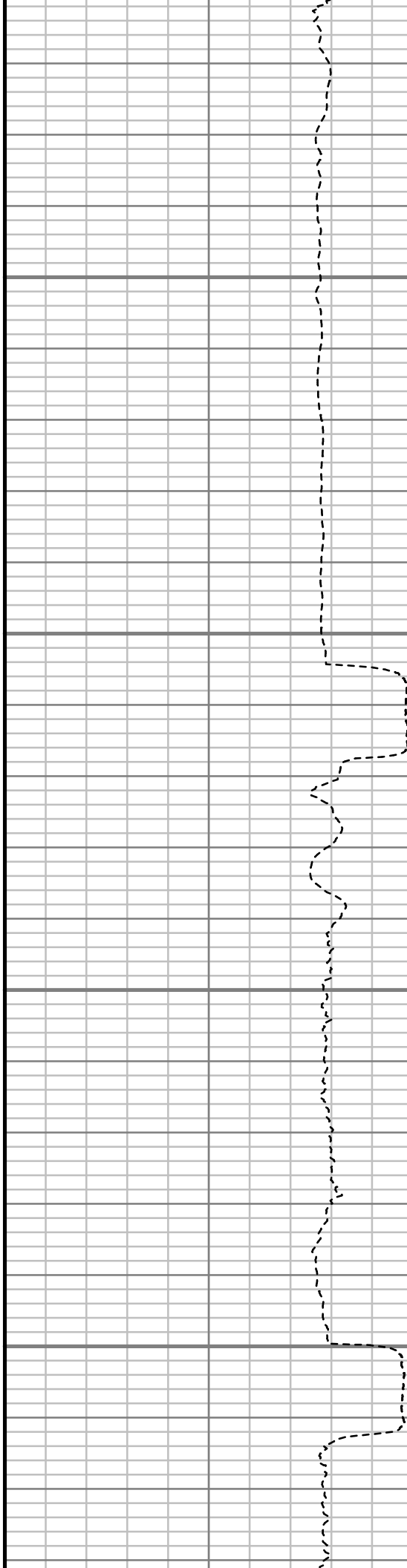


11150

11200

11250

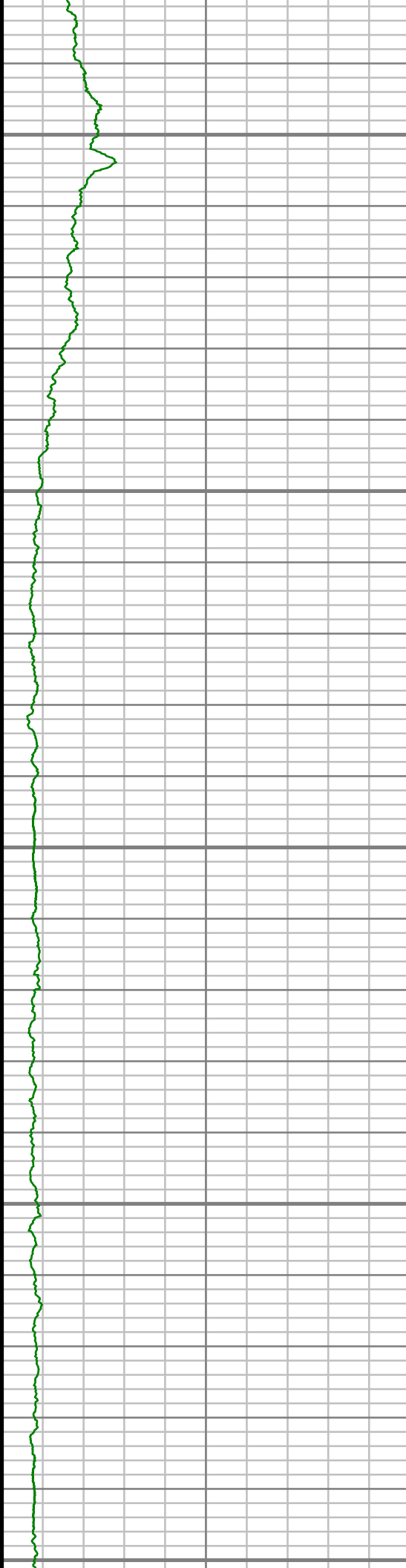
11300



S: 92 MD: 11140.00 ft Inc:  
92.48 deg Az: 179.18 deg TVD:  
7169.97 ft

S: 93 MD: 11235.00 ft Inc:  
91.31 deg Az: 179.06 deg TVD:  
7166.83 ft

S: 94 MD: 11330.00 ft Inc:



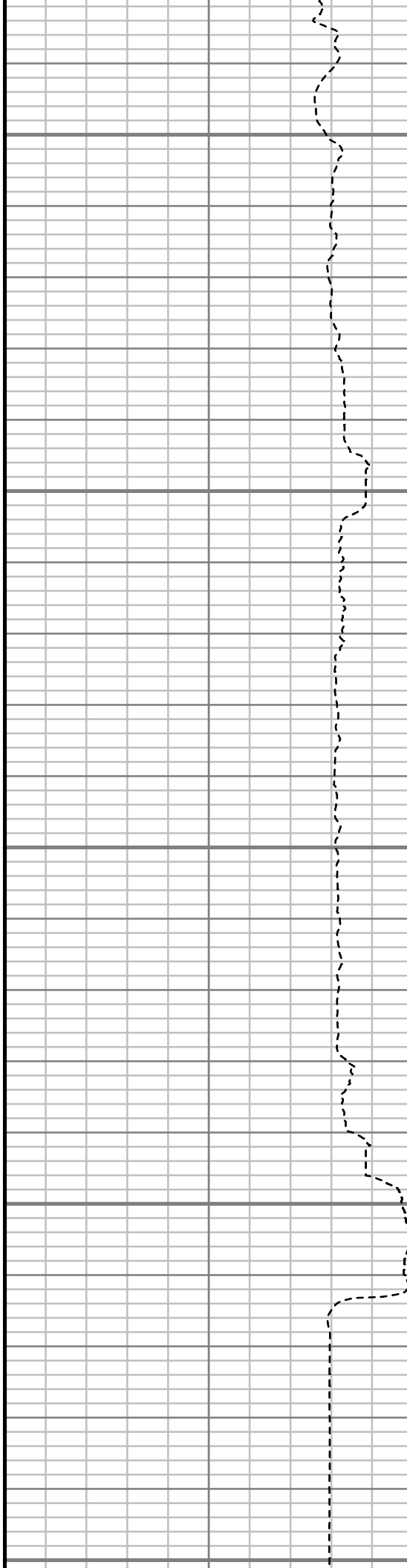
11350

11400

11450

11500

11550

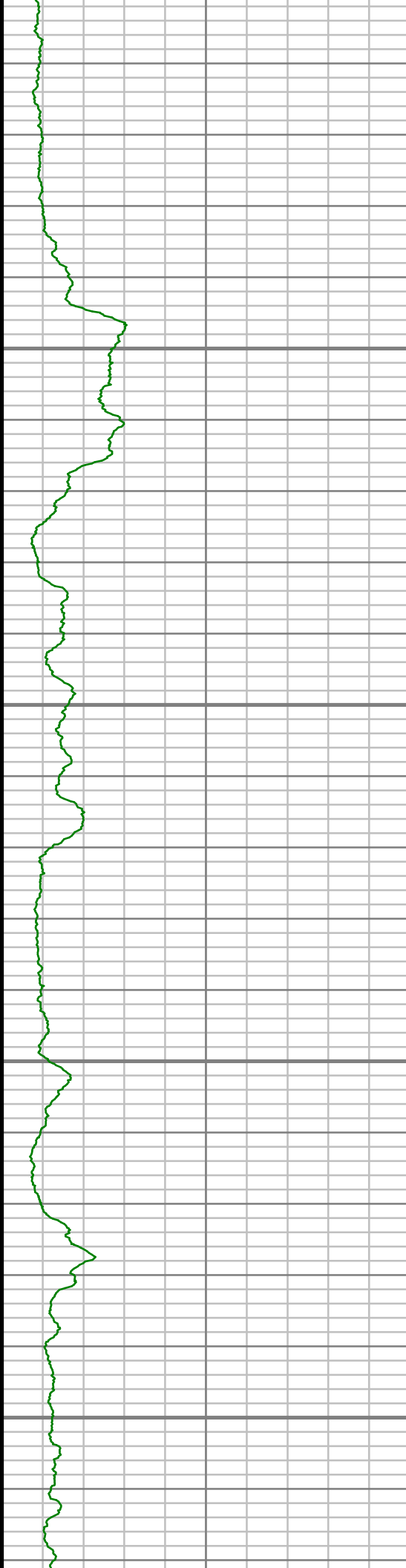


S: 94 MD: 11350.00 ft Inc:  
89.90 deg Az: 178.77 deg TVD:  
7165.83 ft

S: 95 MD: 11424.00 ft Inc:  
91.21 deg Az: 179.26 deg TVD:  
7164.92 ft

S: 96 MD: 11519.00 ft Inc:  
89.87 deg Az: 178.90 deg TVD:  
7164.03 ft



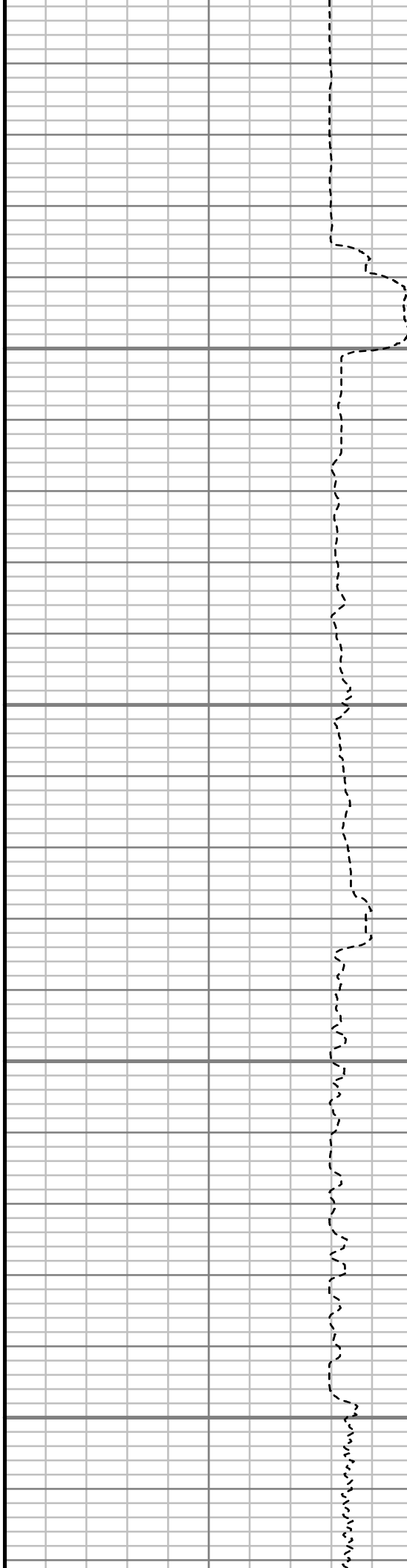


11600

11650

11700

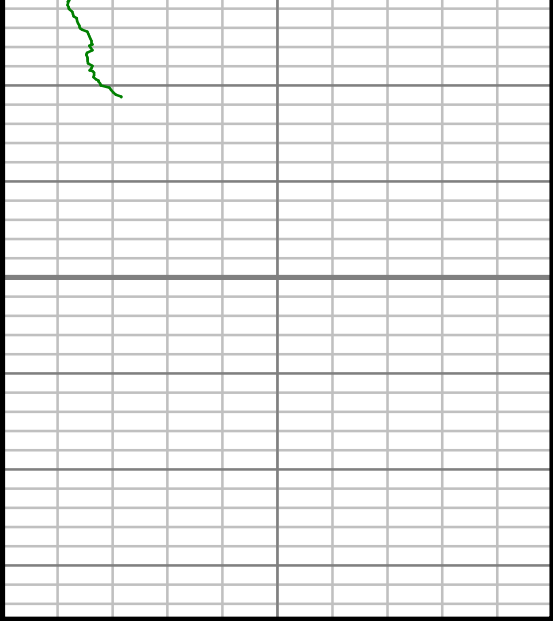
11750



S: 97 MD: 11614.00 ft Inc:  
88.12 deg Az: 178.79 deg TVD:  
7165.70 ft

S: 98 MD: 11709.00 ft Inc:  
88.45 deg Az: 178.18 deg TVD:  
7168.53 ft

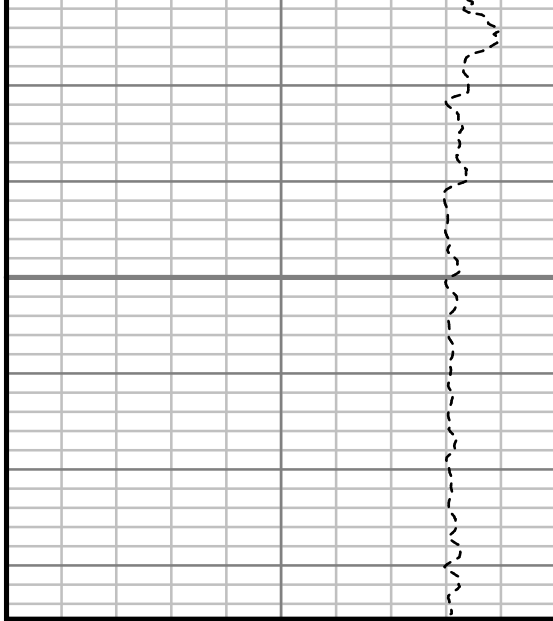
S: 99 MD: 11770.00 ft Inc:



Gamma Ray (GR)		
0	Unit = aapi	150

11800

MEASURED DEPTH  
11240 (ft)



Rate of Penetration (ROP)		
850	Unit = ft/hr	0

S: 99 MD: 11770.00 ft INC: 88.49 deg Az: 177.55 deg TVD: 7170.16 ft	
Comments	



## MWD Survey Report

Well Location	RUHL
Well Name	RUHL 1F-32H-B264
Survey Date	12/13/2014
Latitude	40°6'5.176"N
Longitude	104°34'24.823"W
Btotal	52511, 52514 nT
Dip	66.71 deg
Magnetic Declination	8.37 deg
North Reference	True North
Grid Correction	None
Depth Reference	RKB (25.00 ft)
Calculation Method	Minimum Curvature
Section (VS) Ref	0.00N (ft), 0.00E (ft), 180.00Azim (deg)
Operator(s)	C. WILSON, D. PADULA, S. WAXLER, T. LE

### Well Notes

MD	Inc	Azim	TVD	VS	+N/-S	+E/-W	Closure Distance	Closure Direction	DLS
ft	deg	deg	ft	ft	ft	ft	ft	deg	"/100ft
0.00	0.00	0.00	0.00	0.00	0.00	0.00	0.00	0.00	Invalid
245.00	2.63	93.85	244.91	0.38	-0.38	5.61	5.62	93.85	1.07
336.00	3.21	83.75	335.80	0.24	-0.24	10.22	10.23	91.35	0.85
427.00	3.84	72.48	426.62	-0.95	0.95	15.66	15.69	86.52	1.03
519.00	5.02	68.79	518.35	-3.34	3.34	22.35	22.60	81.51	1.32
608.00	5.63	70.48	606.96	-6.20	6.20	30.09	30.72	78.35	0.70
698.00	6.16	73.42	696.49	-9.06	9.06	38.88	39.92	76.89	0.68
789.00	7.62	74.95	786.83	-12.02	12.02	49.38	50.82	76.32	1.61
879.00	7.35	77.73	876.06	-14.79	14.79	60.77	62.54	76.32	0.50
970.00	7.49	73.46	966.30	-17.71	17.71	72.14	74.28	76.20	0.63
1060.00	7.50	67.42	1055.53	-21.64	21.64	83.18	85.95	75.42	0.87
1162.00	7.33	64.36	1156.68	-27.01	27.01	95.20	98.95	74.16	0.42
1326.00	8.30	70.13	1319.16	-35.56	35.56	115.75	121.09	72.92	0.76
1510.00	8.99	72.46	1501.07	-44.40	44.40	141.95	148.73	72.63	0.42
1693.00	10.09	73.51	1681.54	-53.26	53.26	170.95	179.06	72.70	0.61
1873.00	10.37	70.07	1858.68	-63.26	63.26	201.29	211.00	72.55	0.37
2055.00	10.36	71.16	2037.71	-74.13	74.13	232.17	243.72	72.29	0.11
2236.00	9.99	70.72	2215.86	-84.57	84.57	262.39	275.68	72.14	0.21
2418.00	9.58	72.12	2395.22	-94.43	94.43	291.71	306.61	72.06	0.26

MD	Inc	Azim	TVD	VS	+N/-S	+E/-W	Closure Distance	Closure Direction	DLS
ft	deg	deg	ft	ft	ft	ft	ft	deg	°/100ft
2599.00	10.07	76.21	2573.56	-102.83	102.83	321.42	337.47	72.26	0.47
2780.00	10.06	75.31	2751.77	-110.61	110.61	352.08	369.05	72.56	0.09
2969.00	11.22	71.45	2937.53	-120.64	120.64	385.47	403.91	72.62	0.72
3159.00	10.64	73.32	3124.08	-131.56	131.56	419.79	439.92	72.60	0.36
3348.00	9.70	78.11	3310.11	-139.84	139.84	452.09	473.23	72.81	0.67
3538.00	9.32	64.87	3497.52	-149.68	149.68	481.69	504.41	72.74	1.17
3727.00	10.31	76.40	3683.77	-160.15	160.15	511.98	536.44	72.63	1.16
3917.00	9.36	66.09	3870.99	-170.41	170.41	542.63	568.76	72.57	1.05
4106.00	11.03	72.64	4057.01	-182.04	182.04	573.95	602.13	72.40	1.08
4295.00	9.58	68.82	4242.96	-193.12	193.12	605.88	635.91	72.32	0.85
4484.00	11.40	71.97	4428.79	-204.58	204.58	638.31	670.29	72.23	1.01
4673.00	9.54	70.62	4614.64	-215.56	215.56	670.84	704.63	72.19	0.99
4863.00	10.05	61.93	4801.88	-228.58	228.58	700.32	736.68	71.92	0.82
5052.00	9.41	65.76	4988.16	-242.68	242.68	728.96	768.29	71.59	0.48
5242.00	9.28	74.71	5175.65	-253.10	253.10	757.90	799.05	71.53	0.77
5432.00	8.99	66.50	5363.25	-263.06	263.06	786.29	829.13	71.50	0.70
5621.00	8.64	70.87	5550.02	-273.60	273.60	813.25	858.04	71.41	0.40
5811.00	6.68	71.03	5738.31	-281.87	281.87	837.17	883.35	71.39	1.03

MD	Inc	Azim	TVD	VS	+N/-S	+E/-W	Closure Distance	Closure Direction	DLS
ft	deg	deg	ft	ft	ft	ft	ft	deg	°/100ft
6000.00	3.90	72.40	5926.49	-287.38	287.38	853.69	900.76	71.39	1.47
6190.00	0.71	206.48	6116.36	-288.28	288.28	859.32	906.38	71.45	2.33
6379.00	0.76	125.03	6305.35	-286.50	286.50	859.82	906.30	71.57	0.51
6474.00	0.54	43.23	6400.34	-286.47	286.47	860.64	907.07	71.59	0.91
6569.00	0.58	27.05	6495.34	-287.22	287.22	861.17	907.80	71.56	0.17
6663.00	3.39	147.48	6589.29	-285.30	285.30	862.88	908.82	71.70	3.96
6758.00	8.79	159.19	6683.72	-276.13	276.13	866.97	909.89	72.33	5.80
6852.00	13.44	162.88	6775.93	-258.97	258.97	872.74	910.36	73.47	5.00
6947.00	21.41	166.88	6866.50	-231.49	231.49	879.94	909.88	75.26	8.48
7042.00	30.40	169.17	6951.87	-190.91	190.91	888.41	908.69	77.87	9.51
7136.00	39.21	170.57	7028.98	-138.13	138.13	897.77	908.33	81.25	9.41
7230.00	49.70	172.26	7095.98	-73.12	73.12	907.49	910.43	85.39	11.23
7273.00	58.05	172.36	7121.31	-38.73	38.73	912.13	912.96	87.57	19.43
7325.00	66.44	173.19	7145.51	6.88	-6.88	917.90	917.93	90.43	16.19
7372.00	74.62	176.31	7161.16	50.97	-50.97	921.92	923.33	93.16	18.49
7419.00	82.02	180.01	7170.68	96.93	-96.93	923.38	928.45	95.99	17.53
7449.00	85.32	180.89	7173.99	126.74	-126.74	923.14	931.80	97.82	11.41
7541.00	89.80	182.56	7177.90	218.59	-218.59	920.38	945.98	103.36	5.19

MD	Inc	Azim	TVD	VS	+N/-S	+E/-W	Closure Distance	Closure Direction	DLS
ft	deg	deg	ft	ft	ft	ft	ft	deg	°/100ft
7635.00	90.40	183.15	7177.74	312.47	-312.47	915.70	967.54	108.84	0.89
7730.00	90.20	182.87	7177.24	407.34	-407.34	910.71	997.66	114.10	0.36
7825.00	89.83	183.07	7177.21	502.21	-502.21	905.79	1035.70	119.01	0.44
7920.00	91.71	183.12	7175.93	597.06	-597.06	900.65	1080.58	123.54	1.98
8014.00	91.17	183.12	7173.56	690.89	-690.89	895.54	1131.07	127.65	0.57
8109.00	92.08	183.41	7170.86	785.70	-785.70	890.13	1187.29	131.43	1.00
8204.00	91.55	183.16	7167.85	880.49	-880.49	884.69	1248.18	134.86	0.62
8299.00	90.74	182.88	7165.96	975.34	-975.34	879.69	1313.45	137.95	0.90
8393.00	90.70	183.00	7164.77	1069.21	-1069.21	874.86	1381.52	140.71	0.14
8488.00	90.30	182.60	7163.94	1164.09	-1164.09	870.22	1453.41	143.22	0.60
8582.00	90.74	181.71	7163.09	1258.02	-1258.02	866.68	1527.66	145.44	1.06
8676.00	90.97	181.19	7161.68	1351.98	-1351.98	864.31	1604.64	147.41	0.61
8771.00	89.60	179.78	7161.21	1446.97	-1446.97	863.50	1685.04	149.17	2.07
8866.00	90.07	179.57	7161.49	1541.97	-1541.97	864.04	1767.55	150.74	0.54
8960.00	89.56	179.65	7161.79	1635.97	-1635.97	864.67	1850.42	152.14	0.54
9055.00	90.64	180.33	7161.62	1730.97	-1730.97	864.69	1934.92	153.46	1.34
9150.00	90.10	180.66	7161.01	1825.96	-1825.96	863.87	2020.00	154.68	0.67
9245.00	91.34	180.94	7159.82	1920.94	-1920.94	862.54	2105.70	155.82	1.34

MD	Inc	Azim	TVD	VS	+N/-S	+E/-W	Closure Distance	Closure Direction	DLS
ft	deg	deg	ft	ft	ft	ft	ft	deg	°/100ft
9339.00	89.60	180.53	7159.05	2014.93	-2014.93	861.33	2191.31	156.85	1.91
9434.00	89.73	180.44	7159.60	2109.92	-2109.92	860.53	2278.66	157.81	0.17
9529.00	88.99	180.48	7160.66	2204.91	-2204.91	859.77	2366.61	158.70	0.78
9624.00	88.09	179.72	7163.08	2299.88	-2299.88	859.60	2455.27	159.51	1.24
9719.00	89.19	179.84	7165.34	2394.85	-2394.85	859.97	2544.57	160.25	1.17
9813.00	90.07	180.16	7165.94	2488.85	-2488.85	859.97	2633.23	160.94	0.99
9908.00	90.91	180.46	7165.14	2583.84	-2583.84	859.45	2723.03	161.60	0.94
10003.00	90.77	180.98	7163.74	2678.82	-2678.82	858.26	2812.95	162.24	0.57
10097.00	92.02	181.39	7161.46	2772.77	-2772.77	856.31	2901.99	162.84	1.40
10192.00	91.04	181.01	7158.92	2867.72	-2867.72	854.32	2992.27	163.41	1.10
10287.00	89.23	180.59	7158.70	2962.70	-2962.70	852.99	3083.05	163.94	1.96
10382.00	88.96	179.80	7160.20	3057.69	-3057.69	852.66	3174.35	164.42	0.88
10476.00	89.97	179.72	7161.08	3151.68	-3151.68	853.06	3265.09	164.85	1.08
10571.00	90.10	179.40	7161.03	3246.68	-3246.68	853.79	3357.07	165.27	0.37
10666.00	88.05	178.98	7162.56	3341.65	-3341.65	855.14	3449.33	165.65	2.20
10761.00	87.48	179.12	7166.26	3436.57	-3436.57	856.72	3541.75	166.00	0.62
10856.00	87.95	179.30	7170.05	3531.48	-3531.48	858.02	3634.22	166.34	0.53
10951.00	88.99	179.44	7172.59	3626.44	-3626.44	859.07	3726.80	166.67	1.11

MD	Inc	Azim	TVD	VS	+N/-S	+E/-W	Closure Distance	Closure Direction	DLS
ft	deg	deg	ft	ft	ft	ft	ft	deg	°/100ft
11045.00	90.84	178.77	7172.72	3720.43	-3720.43	860.54	3818.65	166.98	2.09
11140.00	92.48	179.18	7169.97	3815.37	-3815.37	862.24	3911.58	167.27	1.79
11235.00	91.31	179.06	7166.83	3910.30	-3910.30	863.70	4004.55	167.54	1.24
11330.00	89.90	178.77	7165.83	4005.28	-4005.28	865.50	4097.72	167.81	1.51
11424.00	91.21	179.26	7164.92	4099.26	-4099.26	867.11	4189.96	168.06	1.49
11519.00	89.87	178.90	7164.03	4194.24	-4194.24	868.63	4283.24	168.30	1.47
11614.00	88.12	178.79	7165.70	4289.20	-4289.20	870.55	4376.65	168.53	1.84
11709.00	88.45	178.18	7168.53	4384.12	-4384.12	873.06	4470.21	168.74	0.74
11770.00	88.49	177.55	7170.16	4445.06	-4445.06	875.33	4530.43	168.86	1.03

MD	Inc	Azim	TVD	VS	+N/-S	+E/-W	Closure Distance	Closure Direction	DLS
ft	deg	deg	ft	ft	ft	ft	ft	deg	°/100ft

5" = 100' FEET MD