

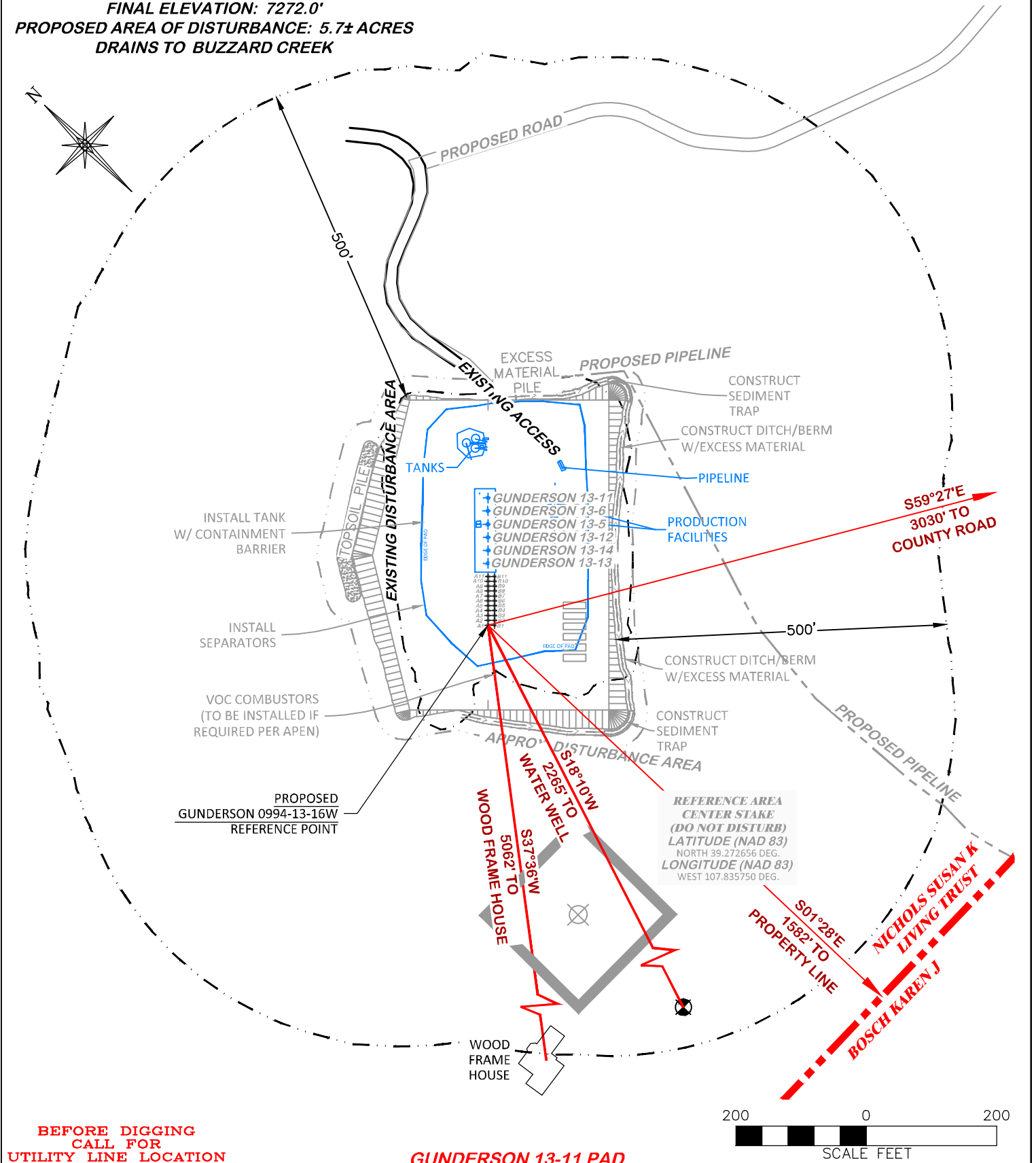
UNGRADED ELEVATION: 7272.0'

FINAL ELEVATION: 7272.0'

PROPOSED AREA OF DISTURBANCE: 5.7± ACRES

DRAINS TO BUZZARD CREEK

LOCATION DRAWING



**BEFORE DIGGING
CALL FOR
UTILITY LINE LOCATION**

GUNDERSON 13-11 PAD

200 0 200
SCALE FEET



RIFFIN & ASSOCIATES, INC.

(307) 362-5028

1414 ELK ST., ROCK SPRINGS, WY 82901

DRAWN: 10/11/2017 - TCM

SCALE: 1" = 200'

REVISED: N/A -

DRG JOB No. 21443

06 LOC DWG

LOCATION DRAWING

LARAMIE ENERGY, LLC.

GUNDERSON 13-11 PAD

**NESW, SECTION 13, T.9 S., R. 94 W., 6th P.M.,
MESA COUNTY, COLORADO**