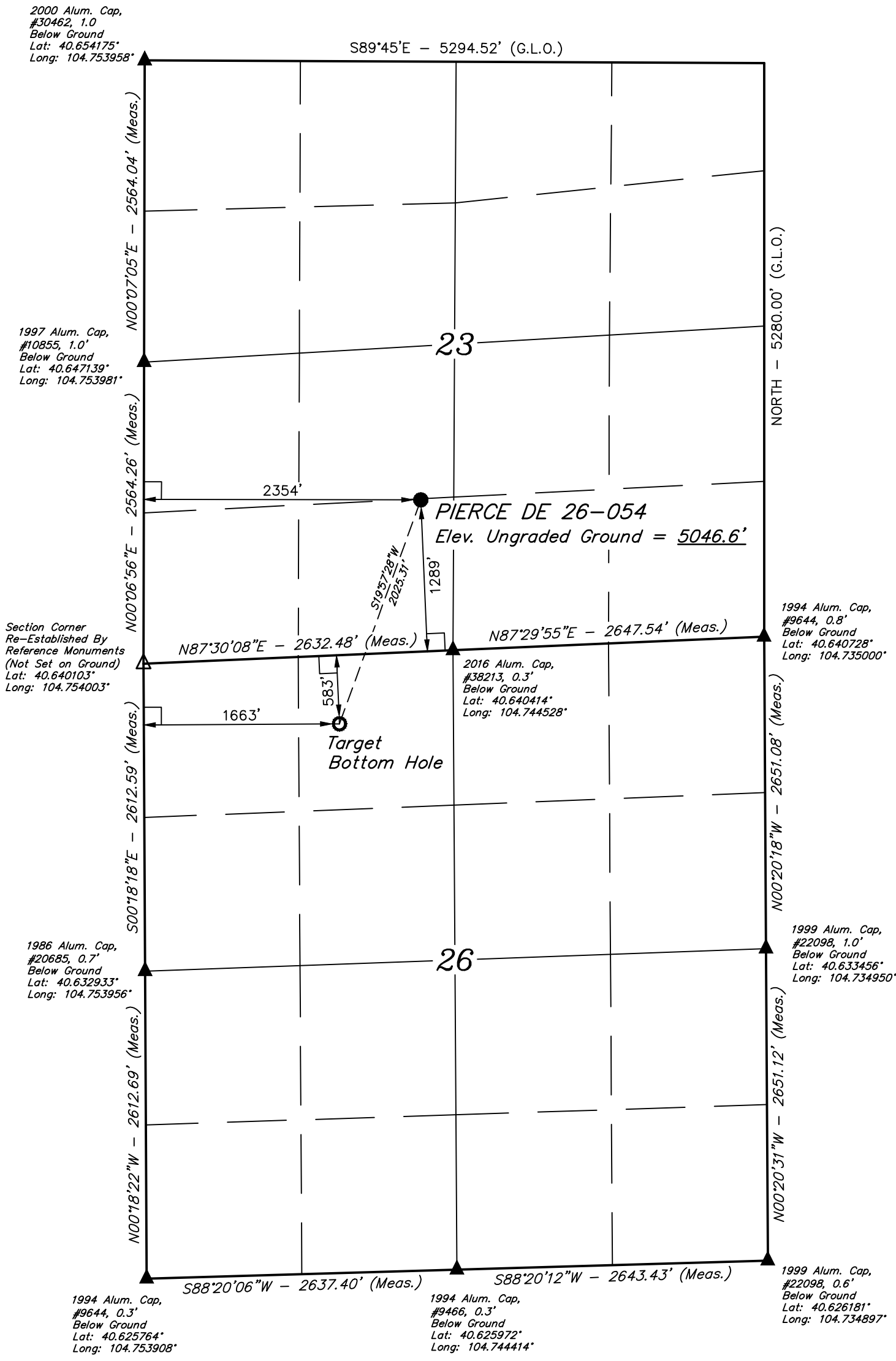


LEGEND:

- └─ = 90° SYMBOL
- = PROPOSED WELLHEAD.
- = TARGET BOTTOM HOLE.
- ▲ = SECTION CORNERS LOCATED. (NAD 83)
- △ = SECTION CORNERS RE-ESTABLISHED. (Not Set on Ground.) (NAD 83)

T8N, R66W, 6th P.M.



PDOP = 1.7

NAD 83 (SURFACE LOCATION)	NAD 83 (TARGET BOTTOM HOLE)
LATITUDE = 40°38'38.12" (40.643922)	LATITUDE = 40°38'19.32" (40.638700)
LONGITUDE = 104°44'43.84" (104.745511)	LONGITUDE = 104°44'52.81" (104.748003)
NAD 27 (SURFACE LOCATION)	NAD 27 (TARGET BOTTOM HOLE)
LATITUDE = 40°38'38.19" (40.643942)	LATITUDE = 40°38'19.39" (40.638719)
LONGITUDE = 104°44'41.95" (104.744986)	LONGITUDE = 104°44'50.93" (104.747481)

CERTIFICATE OF ACCURACY

THIS IS TO CERTIFY THAT THE ABOVE DRAWING WAS PREPARED FROM FIELD NOTES OF ACTUAL SURVEYS MADE BY ME OR UNDER MY SUPERVISION AND THAT THE SAME ARE TRUE AND CORRECT TO THE BEST OF MY KNOWLEDGE AND BELIEF.



BASIS OF BEARINGS
BASIS OF BEARINGS IS A G.P.S. OBSERVATION

BASIS OF ELEVATION
USGS COOPERATIVE BASE NETWORK CONTROL STATION, DESIGNATION "K 262". NGS DATA SHEET LISTS THE NAVD 88 ELEVATION AS BEING 5191.16 FEET.



UELS, LLC
Corporate Office * 85 South 200 East
Vernal, UT 84078 * (435) 789-1017



GREAT WESTERN OPERATING COMPANY

PIERCE DE 26-054
SE 1/4 SW 1/4, SECTION 23, T8N, R66W, 6th P.M.
WELD COUNTY, COLORADO

SURVEYED BY	GREG WEIMER, J.F.	10-12-17	SCALE
DRAWN BY	K.B.	10-13-17	1" = 1000'

WELL LOCATION PLAT