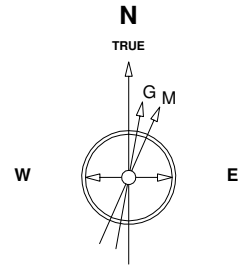


Great Western Operating Company, LLC

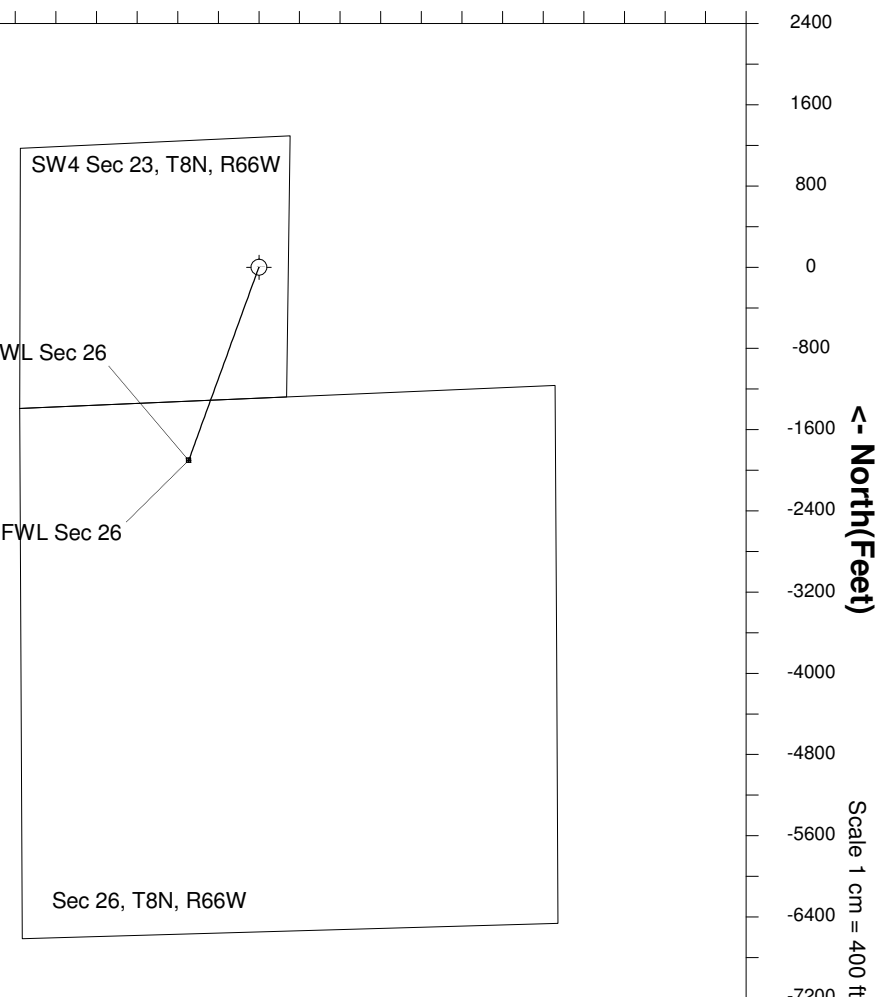
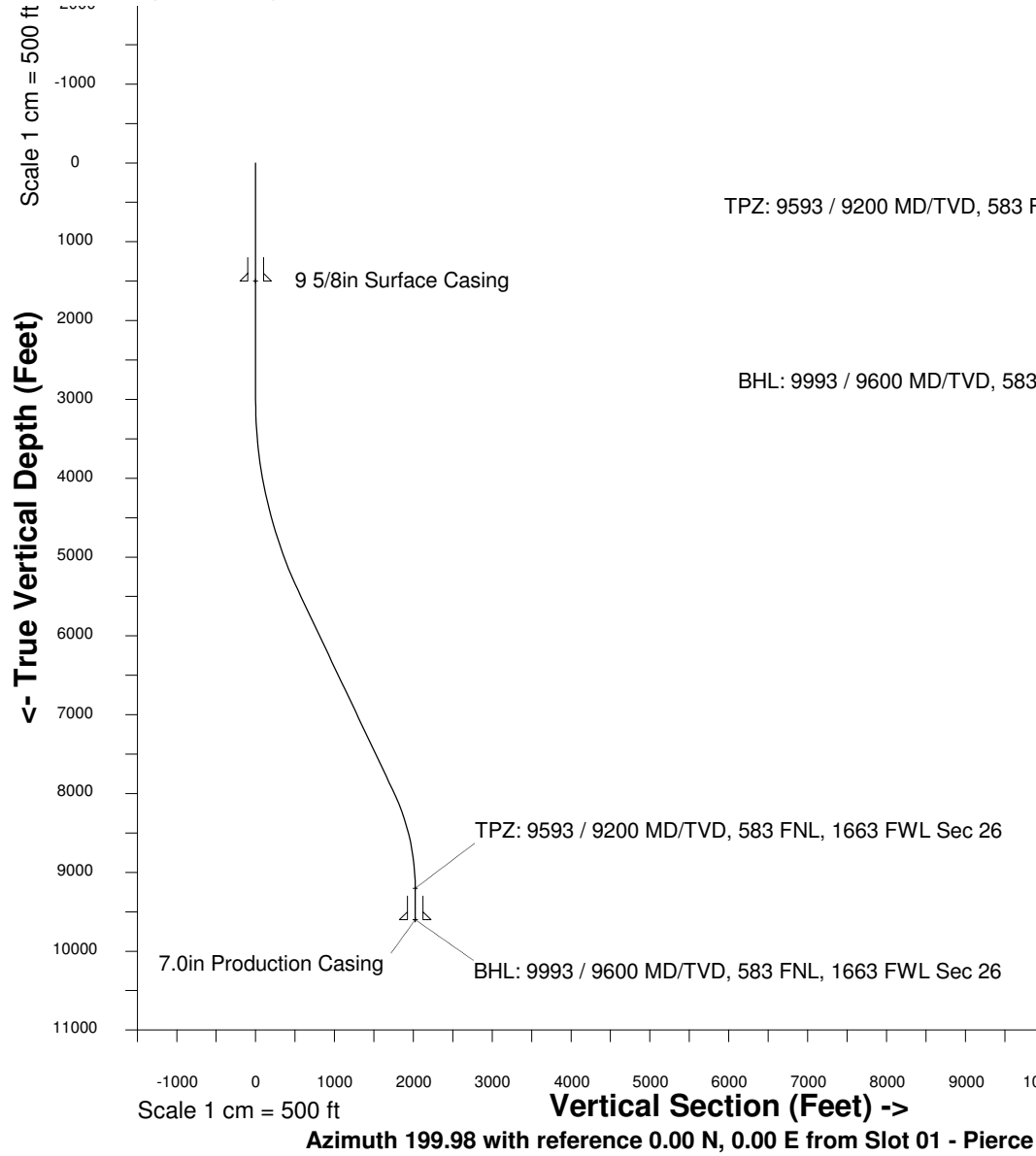
Created by admin
Date plotted 17-Oct-2017



13-Oct-2017
IGRF Model [1900.0-2020.0] Dip: 67.04 deg Field: 52483.2 nT
Lat: N40 38 38.1192 Long: W104 44 43.8396 Elev: 5046.70 ft
Magnetic North is 8.19 deg East of TRUE North
To correct azimuth from Magnetic to TRUE add 8.19 deg

Location	Colorado	Slot	Slot 01 - Pierce DE 26-054
Field	Wattenburg	Well	Pierce DE 26-054
Installation	Pierce Lyons Unit	Wellbore	Pierce DE 26-054 (PWB)

Plot reference is Pierce DE 26-054 (PWB).
Ref wellpath is Pierce DE 26-054 (PWP#1).
Coordinates are in Feet reference Slot 01 - Pierce DE 26-054.
True Vertical Depths are reference Rig Datum.
Measured Depths are reference Rig Datum.
Rig Datum: Planned Datum #1
Rig Datum to Mean Sea Level: 5046.70 ft.
Plot North is aligned to TRUE North.



WELL PROFILE DATA

Point	MD	Inc	Azi	TVD	North	East	deg/100ft	V. Sect
Tie on	0.00	0.00	0.00	0.00	S 0.00	W 0.00		-0.00
KOP	3000.00	0.00	199.98	3000.00	S 0.00	W 0.00	0.00	-0.00
End of Build	5539.94	25.40	199.98	5457.56	S 520.50	W 189.22	3.28	553.82
End of Hold	8322.68	25.40	199.98	7971.32	S 1642.26	W 597.01	0.00	1747.41
Target TPZ: 9...Sec 26	9592.65	0.00	199.98	9200.10	S 1902.51	W 691.62	6.56	2024.32
T.D. & Target BHL... 26	9992.65	0.00	53.62	9600.10	S 1902.51	W 691.62	0.00	2024.32