

LEGEND:

 **PROPOSED LOCATION**



GREAT WESTERN OPERATING COMPANY

PIERCE DE PAD

1289' FSL 2354' FWL

SE 1/4 SW 1/4, SECTION 23, T8N, R66W, 6th P.M.

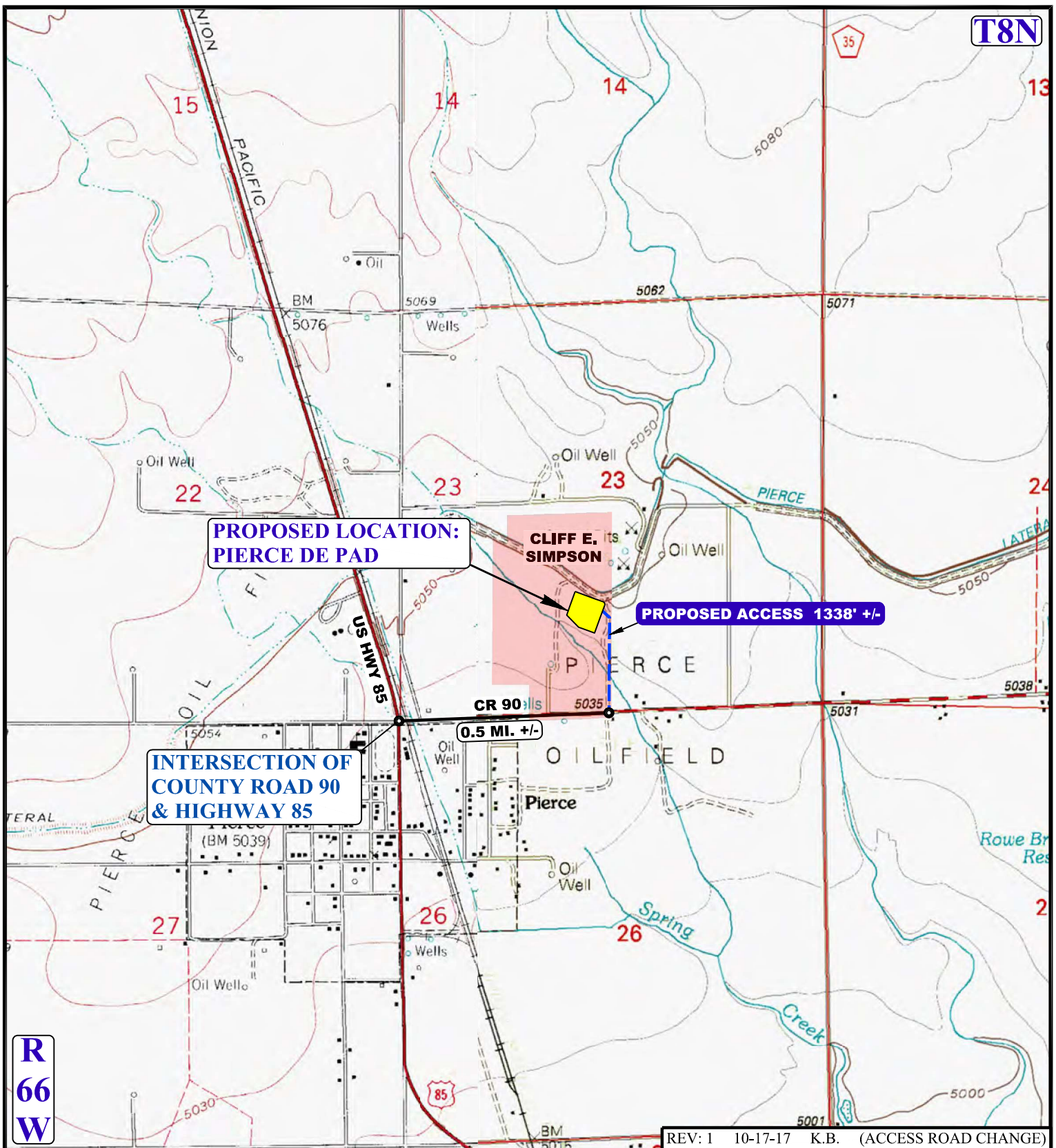
WELD COUNTY, COLORADO

SURVEYED BY	G.W., J.F.	10-12-17	SCALE
DRAWN BY	K.B.	10-13-17	1 : 100,000
ACCESS ROAD MAP			TOPO A



UELS, LLC

Corporate Office * 85 South 200 East
Vernal, UT 84078 * (435) 789-1017



NOTE: PARCEL DATA SHOWN HAS BEEN OBTAINED FROM VARIOUS SOURCES AND SHOULD BE USED FOR MAPPING, GRAPHIC AND PLANNING PURPOSES ONLY. NO WARRANTY IS MADE BY UINTAH ENGINEERING AND LAND SURVEYING (UELS) FOR ACCURACY OF THE PARCEL DATA.

LEGEND:

— EXISTING ROAD
 - - - PROPOSED ROAD



GREAT WESTERN OPERATING COMPANY

PIERCE DE PAD
 1289' FSL 2354' FWL
 SE 1/4 SW 1/4, SECTION 23, T8N, R66W, 6th P.M.
 WELD COUNTY, COLORADO

SURVEYED BY	G.W., J.F.	10-12-17	SCALE
DRAWN BY	K.B.	10-13-17	1 : 24,000
ACCESS ROAD MAP			TOPO B



UELS, LLC
 Corporate Office * 85 South 200 East
 Vernal, UT 84078 * (435) 789-1017