

Construction and Stormwater Inspection

October 12, 2017

Operator: BONANZA CREEK ENERGY OPERATING COMPANY LLC -#8960

Location ID: 452585 (COMPLIANCE POINT #2)

Weld County, CO

SWNW Section 26 T4N R63W

Chris Binschus
Reclamation Specialist, COGCC



COLORADO
Oil & Gas Conservation
Commission

Department of Natural Resources

Inspection Photos
Location ID: 452585
COMPLIANCE POINT #2

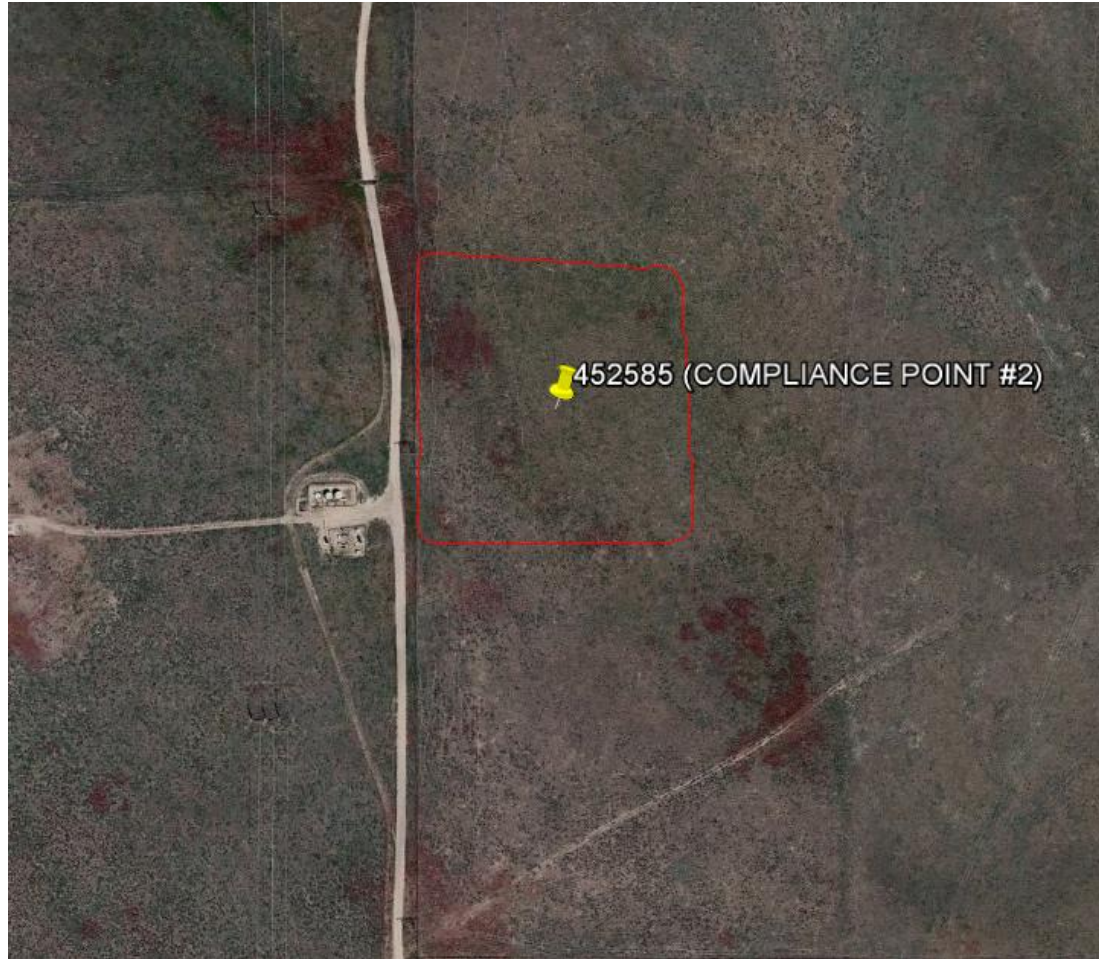


Photo 1. Google Earth aerial imagery taken on June 14, 2016. Operator has constructed a pad in the northwest of Section 26, Township 4N, Range 63W without an approved 2A- see Photo 2. The approximate center of the pad is at the following Latitude/Longitude: 40.285738/-104.413720. A disturbance area of 4.44 acres was mapped on 10/12/2017 using a Trimble Juno 3B handheld device (red line).

Inspection Photos
Location ID: 452585
COMPLIANCE POINT #2

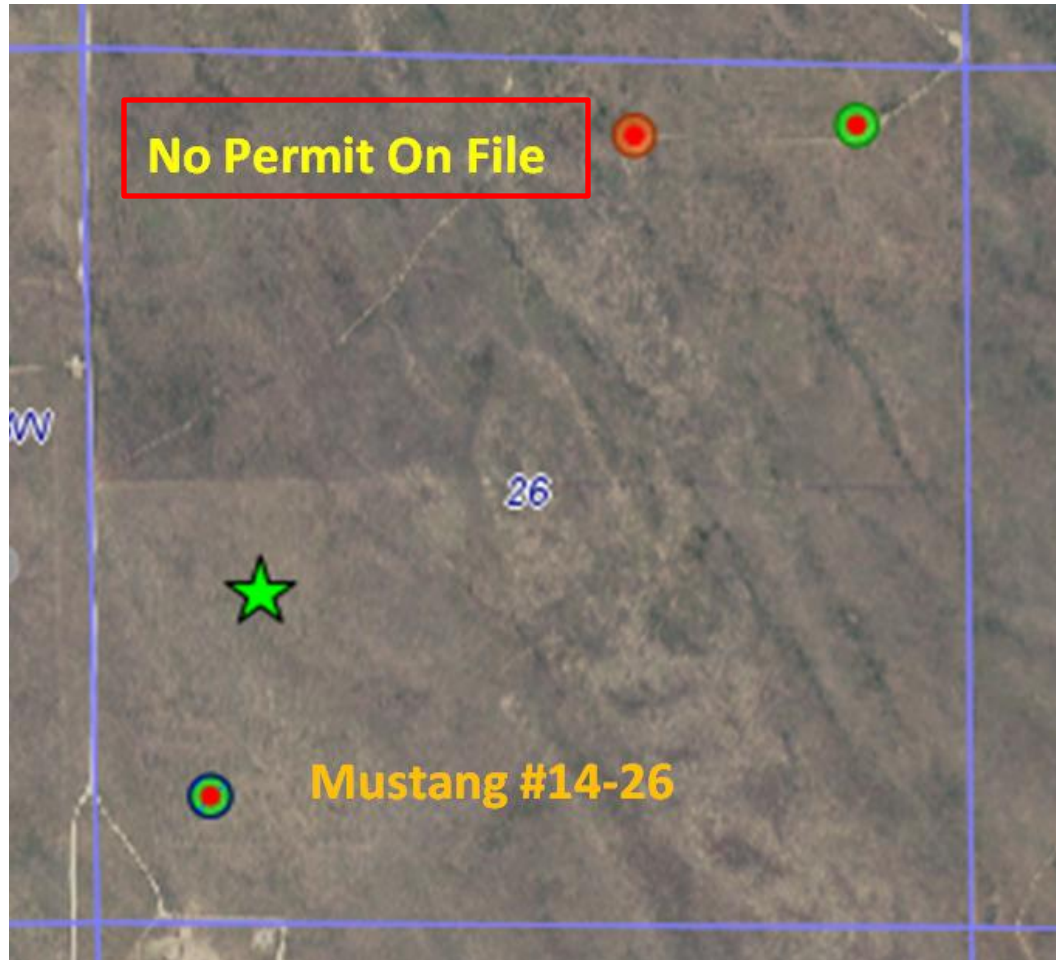


Photo 2. COGCC GISOnline database image illustrates there is no approved 2A in the northwest of Section 26, Township 4N, Range 63W.

Inspection Photos
Location ID: 452585
COMPLIANCE POINT #2



Photo 3. Photo taken from the western location, facing North. Operator has installed a ditch and berm around the entire location perimeter. The berm BMP has been left unconsolidated which would not be considered in proper functioning condition.



Photo 4. Photo taken from the northwestern location, facing East. See comments under Photo 3.

Inspection Photos
Location ID: 452585
COMPLIANCE POINT #2



Photo 5. Photo taken from the northeastern location, facing South. See comments under Photo 3.



Photo 6. Photo taken from the southeastern location, facing West. See comments under Photo 3.

Inspection Photos
Location ID: 452585
COMPLIANCE POINT #2

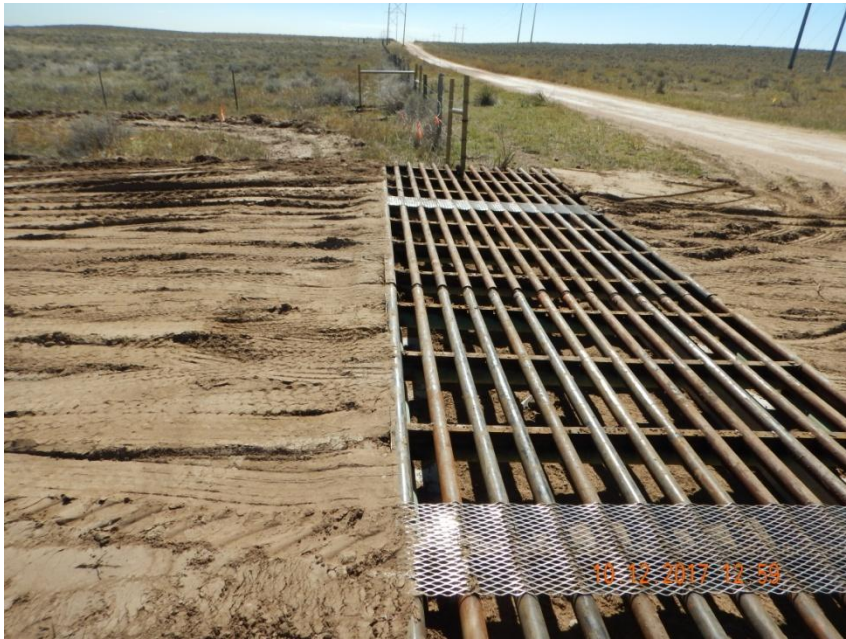


Photo 7. Photo taken from the entrance of the location, facing South. Operator has installed a cattle guard tracking device.