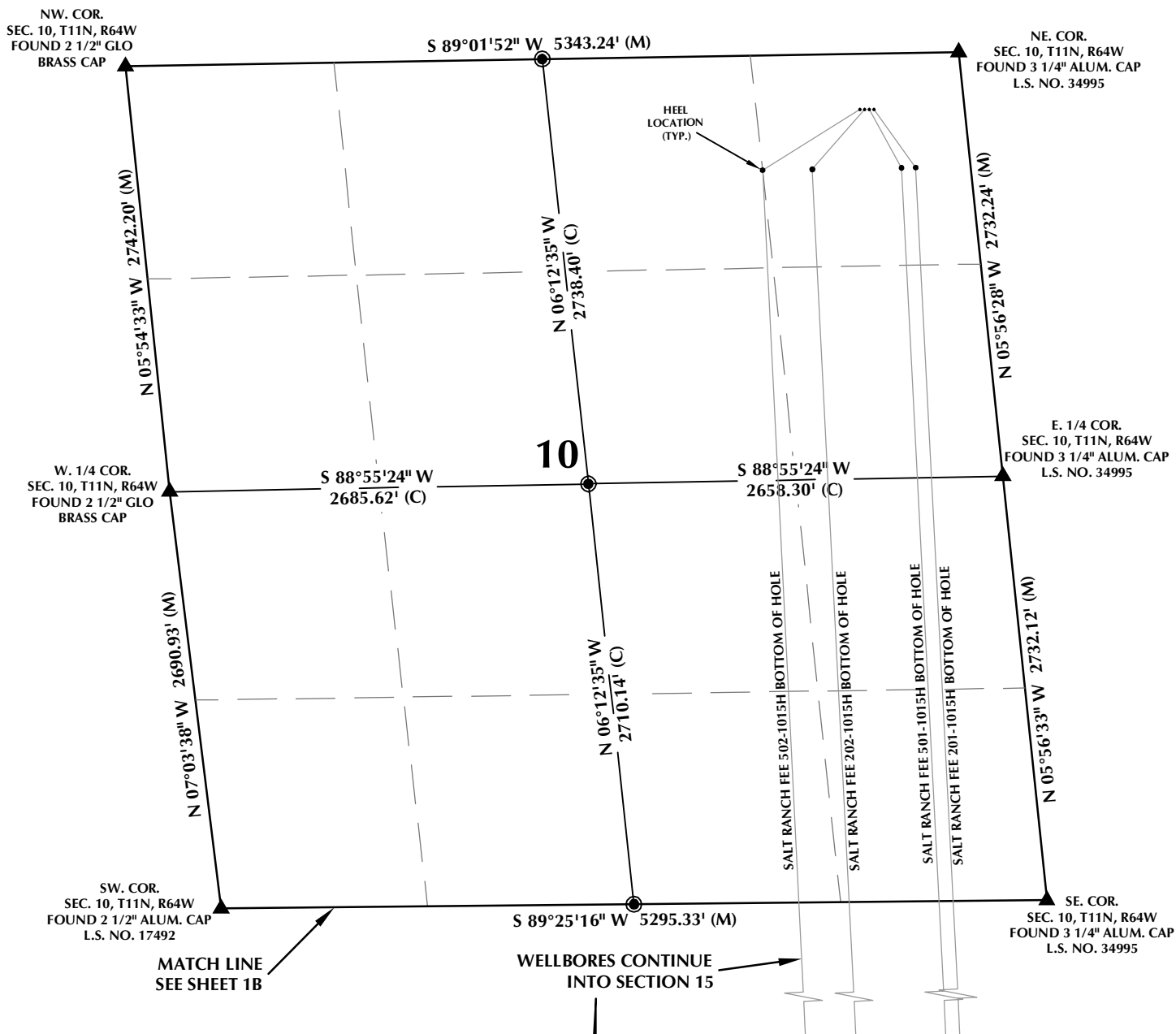


# MULTI-WELL PLAN SECTION 10, T11N, R64W



## WELL NOTES:

SALT RANCH FEE 502-1015H  
SURFACE: 356' FNL, 667' FEL, SEC. 10  
BOTTOM HOLE: 300' FSL, 1344' FEL, SEC. 15

SALT RANCH FEE 202-1015H  
SURFACE: 357' FNL, 637' FEL, SEC. 10  
BOTTOM HOLE: 300' FSL, 1022' FEL, SEC. 15

SALT RANCH FEE 501-1015H  
SURFACE: 357' FNL, 607' FEL, SEC. 10  
BOTTOM HOLE: 300' FSL, 440' FEL, SEC. 15

SALT RANCH FEE 201-1015H  
SURFACE: 358' FNL, 578' FEL, SEC. 10  
BOTTOM HOLE: 300' FSL, 350' FEL, SEC. 15

## NOTES:

- ▲ INDICATES SECTION CORNER
- INDICATES CALCULATED CORNER
- BASIS OF BEARING DERIVED FROM COLORADO COORDINATE SYSTEM OF 1983 NORTH ZONE.
- ALL MEASURED DISTANCES ARE GRID. COMBINED SCALE FACTOR: .99977282 CALCULATED FROM THE E. 1/4 CORNER OF SECTION 10, T11N, R64W
- WELL FOOTAGES ARE MEASURED AT RIGHT ANGLES TO THE SECTION LINES.

## WELL PAD - SALT RANCH FEE 202-1015H

MULTI-WELL PLAN  
SALT RANCH FEE 502-1015H,  
SALT RANCH FEE 202-1015H,  
SALT RANCH FEE 501-1015H &  
SALT RANCH FEE 201-1015H  
LOCATED IN SECTIONS 10 & 15  
T11N, R64W, 6TH P.M.  
WELD COUNTY, COLORADO



**CLEAR CREEK**  
Resource Partners

717 17th Street, Suite 1525  
Denver, Colorado 80202



## CONSULTING, LLC

SHERIDAN OFFICE  
1095 Saberton Avenue  
Sheridan, Wyoming 82801  
Phone 307-674-0609

LOVELAND OFFICE  
1635 Foxtrail Drive, Suite 204  
Loveland, Colorado 80538  
Phone 970-776-4331

DRAFTED BY:	LMO	CHECKED BY:	RKF	SHEET NO:
DATE DRAFTED:	10/4/17	DATE SURVEYED:	9/8/17	<b>1A</b>
REVISED:		FILE NAME:	17-127	1A OF 1

**Section 15, T11N, R64W**

**Boundaries and Distances:**

- North Boundary:** S 89°25'16" W 5295.33' (M)
- South Boundary:** S 89°18'53" W 2703.99' (M)
- East Boundary:** N 00°03'11" W 5321.29' (M)
- West Boundary:** N 01°09'47" E 2670.61' (M)
- Internal East-West Lines:**
  - N 01°09'07" E 2668.66' (M)
  - N 00°33'15" E 2664.51' (C)
  - N 00°33'15" E 2668.33' (C)
- Internal North-South Lines:**
  - S 89°20'50" W 2675.58' (C)
  - S 89°20'50" W 2675.94' (C)
  - S 89°11'38" W 2704.31' (M)

**Corners and Descriptions:**

- NW. COR.** SEC. 15, T11N, R64W FOUND 2 1/2" ALUM. CAP L.S. NO. 17492
- NE. COR.** SEC. 15, T11N, R64W FOUND 3 1/4" ALUM. CAP L.S. NO. 34995
- SW. COR.** SEC. 15, T11N, R64W FOUND 2 1/2" ALUM. CAP L.S. NO. 17492
- SE. COR.** SEC. 15, T11N, R64W FOUND 2 1/2" GLO BRASS CAP
- W. 1/4 COR.** SEC. 15, T11N, R64W FOUND 2 1/2" GLO BRASS CAP
- S. 1/4 COR.** SEC. 15, T11N, R64W FOUND 2 1/2" ALUM. CAP P.L.S. NO. 28285

**Match Line:** MATCH LINE SEE SHEET 1A

**Salt Ranch Fee Holes:**

- SALT RANCH FEE 502-1015H BOTTOM OF HOLE
- SALT RANCH FEE 202-1015H BOTTOM OF HOLE
- SALT RANCH FEE 501-1015H BOTTOM OF HOLE
- SALT RANCH FEE 201-1015H BOTTOM OF HOLE

**WELL NOTES:**

**SALT RANCH FEE 502-1015H**

**SURFACE: 356' FNL, 667' FEL, SEC. 10**

**BOTTOM HOLE: 300' FSL, 1344' FEL, SEC. 15**

**SALT RANCH FEE 202-1015H**

**SURFACE: 357' FNL, 637' FEL, SEC. 10**

**BOTTOM HOLE: 300' FSL, 1022' FEL, SEC. 15**

**SALT RANCH FEE 501-1015H**

**SURFACE: 357' FNL, 607' FEL, SEC. 10**

**BOTTOM HOLE: 300' FSL, 440' FEL, SEC. 15**

SALT RANCH FEE 201-1015H

**SURFACE: 358' FNL, 578' FEL, SEC. 10**

**BOTTOM HOLE: 300' FSL, 350' FEL, SEC. 15**

**NOTES:**

1. ▲ INDICATES SECTION CORNER
2. ● INDICATES CALCULATED CORNER
3. BASIS OF BEARING DERIVED FROM COLORADO  
COORDINATE SYSTEM OF 1983 NORTH ZONE.
4. ALL MEASURED DISTANCES ARE GRID.  
COMBINED SCALE FACTOR: .99977282 CALCULATED  
FROM THE E. 1/4 CORNER OF SECTION 10, T11N, R64W
5. WELL FOOTAGES ARE MEASURED AT RIGHT ANGLES TO  
THE SECTION LINES.

**WELL PAD - SALT RANCH FEE 202-1015H**

**MULTI-WELL PLAN**  
**SALT RANCH FEE 502-1015H,**  
**SALT RANCH FEE 202-1015H,**  
**SALT RANCH FEE 501-1015H &**  
**SALT RANCH FEE 201-1015H**  
**LOCATED IN SECTIONS 10 & 15**  
**T11N, R64W, 6TH P.M.**  
**WELD COUNTY, COLORADO**



**717 17th Street, Suite 1525  
Denver, Colorado 80202**



CONSULTING, LLC

**SHERIDAN OFFICE**  
1095 Saberton Avenue  
Sheridan, Wyoming 82801  
Phone 307-674-0609

**LOVELAND OFFICE**  
1635 Foxtrail Drive, Suite 204  
Loveland, Colorado 80538  
Phone 970-776-4331

**DRAFTED BY:** LMO

CHECKED BY:	RKF
-------------	-----

DATE DRAFTED: 10/4/17

DATE SURVEYED: 9/8/17

REVISÉ:

FILE NAME:	17-127
------------	--------

SHEET NO:

# 1B

1B OF 1