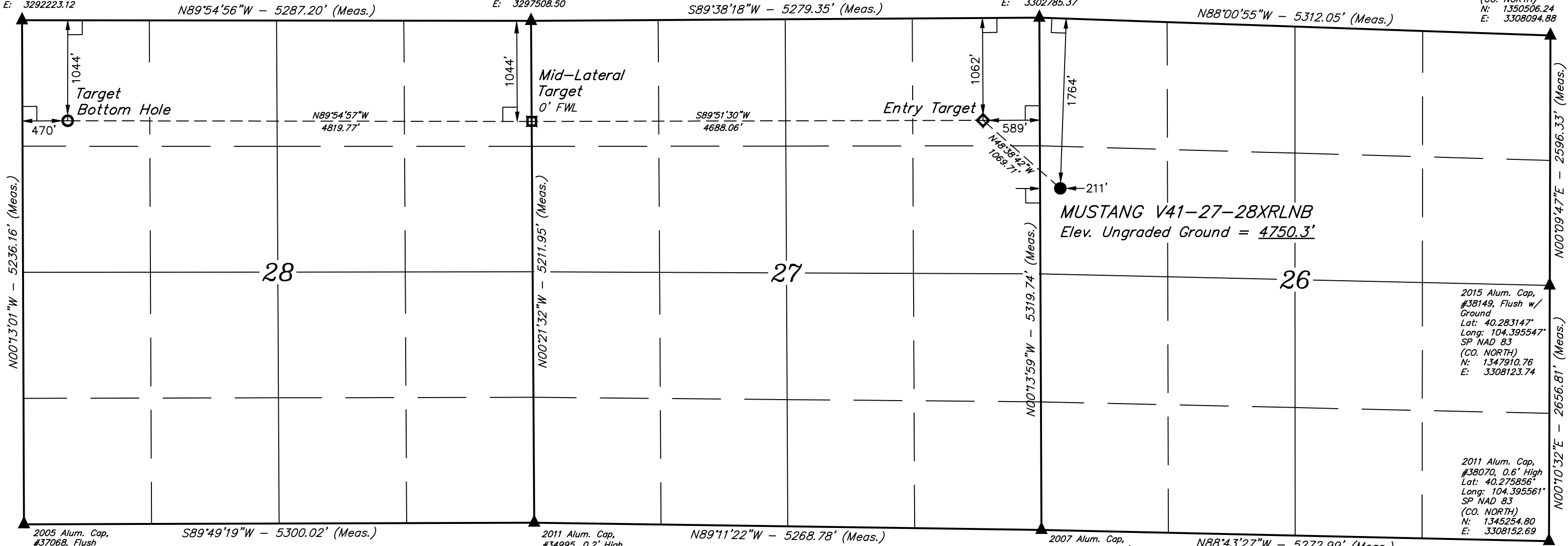


2009 Alum. Cap,  
#34995, Flush  
w/ Ground  
Lat: 40.290628°  
Long: 104.452431°  
SP NAD 83  
(CO. NORTH)  
N: 1350443.01  
E: 3292223.12

2011 Alum. Cap,  
#34995, 0.8' High  
Lat: 40.290636°  
Long: 104.433481°  
SP NAD 83  
(CO. NORTH)  
N: 1350509.03  
E: 3297508.50

2007 Alum. Cap,  
#38019, Flush w/  
Ground  
Lat: 40.290753°  
Long: 104.414561°  
SP NAD 83  
(CO. NORTH)  
N: 1350616.03  
E: 3302785.37

2015 Alum. Cap,  
#38149, Flush w/  
Ground  
Lat: 40.290272°  
Long: 104.395536°  
SP NAD 83  
(CO. NORTH)  
N: 1350506.24  
E: 3308094.88



2005 Alum. Cap,  
#37068, Flush  
w/ Ground  
Lat: 40.276258°  
Long: 104.452319°  
SP NAD 83  
(CO. NORTH)  
N: 1345209.07  
E: 3292316.05

2011 Alum. Cap,  
#34995, 0.2' High  
Lat: 40.276333°  
Long: 104.433328°  
SP NAD 83  
(CO. NORTH)  
N: 1345299.52  
E: 3297613.89

2007 Alum. Cap,  
#38019, Flush w/  
Ground  
Lat: 40.276156°  
Long: 104.414450°  
SP NAD 83  
(CO. NORTH)  
N: 1345298.56  
E: 3302881.27

2015 Alum. Cap,  
#38149, Flush w/  
Ground  
Lat: 40.283147°  
Long: 104.395547°  
SP NAD 83  
(CO. NORTH)  
N: 1347910.76  
E: 3308123.74

2011 Alum. Cap,  
#38070, 0.6' High  
Lat: 40.275856°  
Long: 104.395561°  
SP NAD 83  
(CO. NORTH)  
N: 1345254.80  
E: 3308152.69

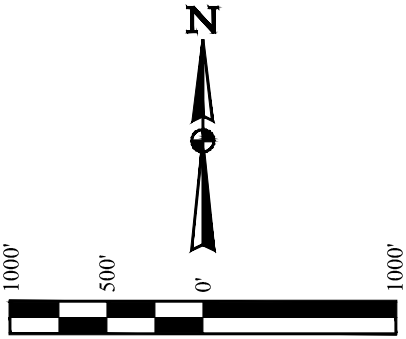
- LEGEND:**
- = 90° SYMBOL
  - = PROPOSED WELLHEAD.
  - ◆ = ENTRY TARGET.
  - = MID-LATERAL TARGET.
  - = TARGET BOTTOM HOLE.
  - ▲ = SECTION CORNERS LOCATED.

**BASIS OF BEARINGS**  
BASIS OF BEARINGS IS A G.P.S. OBSERVATION

**BASIS OF ELEVATION**  
SPOT ELEVATION LOCATED AT THE NORTHEAST CORNER OF SECTION 24, T5N, R62W, 6th P.M. TAKEN FROM THE POINT OF ROCKS, QUADRANGLE, COLORADO, WELD COUNTY, 7.5 MINUTE QUAD (TOPOGRAPHIC MAP) PUBLISHED BY THE UNITED STATES DEPARTMENT OF THE INTERIOR, GEOLOGICAL SURVEY. SAID ELEVATION IS MARKED AS BEING 4530 FEET.



**UELS, LLC**  
Corporate Office \* 85 South 200 East  
Vernal, UT 84078 \* (435) 789-1017



PDOP = 1.4

NAD 83 (SURFACE LOCATION)	NAD 83 (MID-LATERAL TARGET)
LATITUDE = 40°17'09.21" (40.285892)	LATITUDE = 40°17'15.98" (40.287772)
LONGITUDE = 104°24'49.57" (104.413769)	LONGITUDE = 104°26'00.42" (104.433450)
STATE PLANE NAD 83 (CO. NORTH)	STATE PLANE NAD 83 (CO. NORTH)
N: 1348847.23 E: 3303028.33	N: 1349465.52 E: 3297529.61
NAD 83 (ENTRY TARGET)	NAD 83 (TARGET BOTTOM HOLE)
LATITUDE = 40°17'16.18" (40.287828)	LATITUDE = 40°17'15.95" (40.287764)
LONGITUDE = 104°24'59.94" (104.416650)	LONGITUDE = 104°27'02.60" (104.450722)
STATE PLANE NAD 83 (CO. NORTH)	STATE PLANE NAD 83 (CO. NORTH)
N: 1349542.55 E: 3302215.79	N: 1349405.31 E: 3292711.49

**CERTIFICATE**

THIS IS TO CERTIFY THAT THE ABOVE PLAT WAS PREPARED FROM FIELD NOTES OF ACTUAL SURVEYS MADE BY ME OR UNDER MY SUPERVISION AND THAT THE SAME ARE TRUE AND CORRECT TO THE BEST OF MY KNOWLEDGE AND BELIEF.

*Chad Meiers*  
REGISTERED LAND SURVEYOR  
REGISTRATION NO. 28285  
STATE OF COLORADO

REV: 2 09-26-17 D.COX (SURFACE LOCATION MOVE)

**BONANZA CREEK ENERGY  
OPERATING COMPANY, LLC**

**MUSTANG V41-27-28XRLNB**  
SW 1/4 NW 1/4, SECTION 26, T4N, R63W, 6th P.M.  
WELD COUNTY, COLORADO

SURVEYED BY	CHAD MEIERS, T.M.	09-01-17	SCALE
DRAWN BY	D.COX	06-23-17	1" = 1000'

**WELL LOCATION PLAT**