

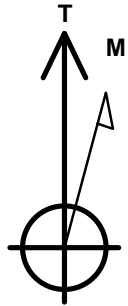
# Clear Creek Resource Partners

Well Name: **Salt Ranch Fee 201-1015H**

Surface Location: Salt Ranch East 10 Pad Sec.10-T11N-R64W  
 North American Datum 1983 , US State Plane 1983, Colorado Northern Zone  
 Ground Elevation: 5433.0  
 +N/-S+E/-W Northing Easting Longitude Slot  
 0.0 0.0 1587572.01 3269179.90 40.942190 -104.525689  
 Original Well Elev WELL @ 5456.0ft (Original Well Elev)

## WELLBORE TARGET DETAILS

Name	TVD	+N/-S	+E/-W	Shape
SHL 358'FNL & 578'FEL, Sec.10	1.0	0.0	0.0	Point
LPL 735'FNL & 350'FEL, Sec.10	7666.0	-375.6	263.6	Point
WP (201-1015H)	7692.6	-5079.3	702.4	Point
BHL 300'FSL & 350'FEL, Sec.15	7721.0	-10101.4	652.0	Point



Azimuths to True North  
 Magnetic North: 8.55°

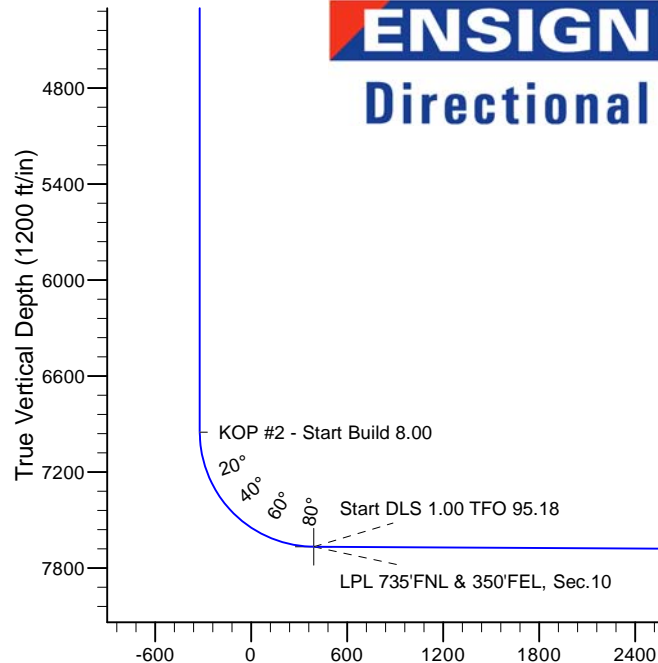
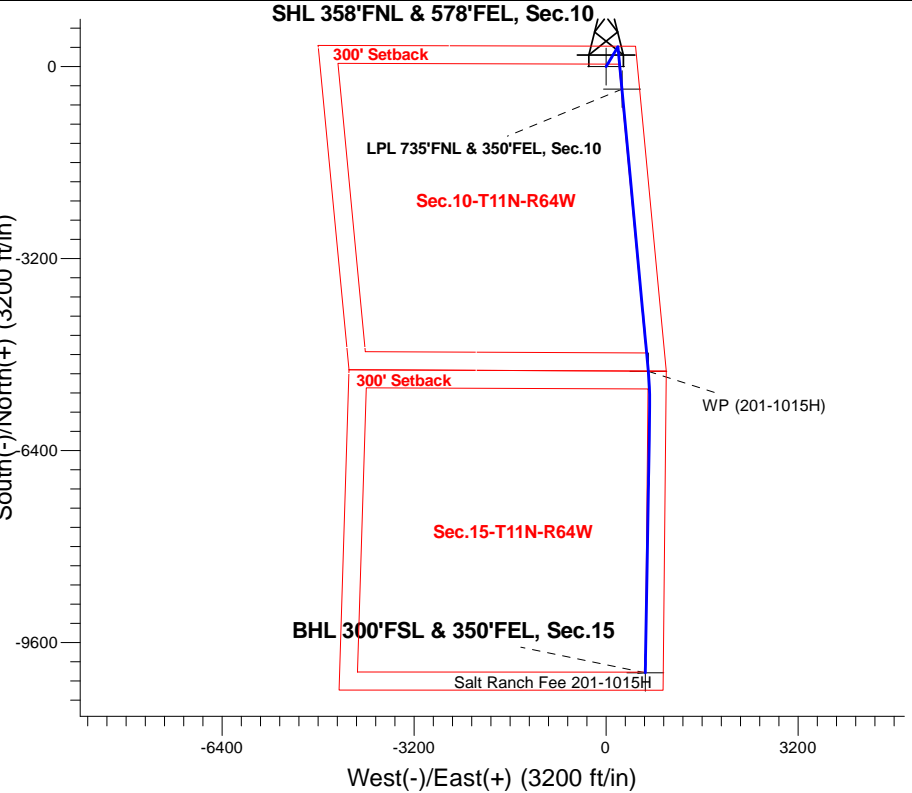
Magnetic Field  
 Strength: 52814.1snT  
 Dip Angle: 67.28°  
 Date: 9/8/2017  
 Model: HDGM

**Salt Ranch East 10 Pad Sec.10-T11N-R64W**  
**Salt Ranch Fee 201-1015H**  
**Plan #2 (10-11-17)**  
**11:53, October 11 2017**

## ANNOTATIONS

TVD	MD	Annotation
200.0	200.0	KOP - Start Build 1.50
3677.5	3697.9	Start Drop -2.00
6949.8	6970.9	KOP #2 - Start Build 8.00
7666.0	8092.5	Start DLS 1.00 TFO 95.18
7692.6	12816.7	Start DLS 1.00 TFO 90.03
7721.0	17840.3	TD at 17840.3

South(-)/North(+) (3200 ft/in)



## SECTION DETAILS

Sec	MD	Inc	Azi	TVD	+N/-S	+E/-W	Dleg	TFace	VSec	Target
1	0.0	0.00	0.00	0.0	0.0	0.0	0.00	0.00	0.0	
2	200.0	0.00	0.00	200.0	0.0	0.0	0.00	0.00	0.0	
3	630.9	6.46	30.53	630.0	20.9	12.3	1.50	30.53	-20.1	
4	3697.9	6.46	30.53	3677.5	318.3	187.7	0.00	0.00	-305.6	
5	4021.1	0.00	0.00	4000.0	334.0	197.0	2.00	180.00	-320.6	
6	6970.9	0.00	0.00	6949.8	334.0	197.0	0.00	0.00	-320.6	
7	8091.9	89.68	174.64	7666.0	-375.1	263.5	8.00	174.64	391.3	
8	8092.5	89.68	174.64	7666.0	-375.6	263.6	0.00	0.00	391.8	LPL 735'FNL & 350'FEL, Sec.10
9	8095.4	89.68	174.67	7666.0	-378.5	263.8	1.00	95.18	394.7	
10	12816.7	89.68	174.67	7692.6	-5079.3	702.4	0.00	0.00	5114.0	WP (201-1015H)
11	13446.7	89.68	180.97	7696.2	-5708.6	726.4	1.00	90.03	5743.5	
12	17840.3	89.68	180.97	7721.0	-10101.4	652.0	0.00	0.00	10122.5	BHL 300'FSL & 350'FEL, Sec.15

**BHL 300'FSL & 350'FEL, Sec.15**

Vertical Section at 176.31° (1200 ft/in)



## **Clear Creek Resource Partners**

**SEC.10-T11N-R64W**

**Salt Ranch East 10 Pad Sec.10-T11N-R64W**

**Salt Ranch Fee 201-1015H**

**Wellbore #1**

**Plan: Plan #2 (10-11-17)**

## **Standard Planning Report**

**11 October, 2017**

<b>Database:</b>	US_EDM	<b>Local Co-ordinate Reference:</b>	Well Salt Ranch Fee 201-1015H
<b>Company:</b>	Clear Creek Resource Partners	<b>TVD Reference:</b>	WELL @ 5456.0ft (Original Well Elev)
<b>Project:</b>	SEC.10-T11N-R64W	<b>MD Reference:</b>	WELL @ 5456.0ft (Original Well Elev)
<b>Site:</b>	Salt Ranch East 10 Pad Sec.10-T11N-R64W	<b>North Reference:</b>	True
<b>Well:</b>	Salt Ranch Fee 201-1015H	<b>Survey Calculation Method:</b>	Minimum Curvature
<b>Wellbore:</b>	Wellbore #1		
<b>Design:</b>	Plan #2 (10-11-17)		

<b>Project</b>	SEC.10-T11N-R64W, Weld County, CO		
<b>Map System:</b>	US State Plane 1983	<b>System Datum:</b>	Mean Sea Level
<b>Geo Datum:</b>	North American Datum 1983		Using Well Reference Point
<b>Map Zone:</b>	Colorado Northern Zone		Using geodetic scale factor

<b>Site</b>	Salt Ranch East 10 Pad Sec.10-T11N-R64W			
<b>Site Position:</b>		<b>Northing:</b>	1,587,572.01 usft	<b>Latitude:</b> 40.942190
<b>From:</b>	Lat/Long	<b>Easting:</b>	3,269,179.91 usft	<b>Longitude:</b> -104.525689
<b>Position Uncertainty:</b>	0.0 ft	<b>Slot Radius:</b>	13-3/16 "	<b>Grid Convergence:</b> 0.63 °

<b>Well</b>	Salt Ranch Fee 201-1015H			
<b>Well Position</b>	<b>+N/-S</b>	0.0 ft	<b>Northing:</b>	1,587,572.01 usft
	<b>+E/-W</b>	0.0 ft	<b>Easting:</b>	3,269,179.91 usft
<b>Position Uncertainty</b>		0.0 ft	<b>Wellhead Elevation:</b>	0.0 ft
			<b>Ground Level:</b>	5,433.0 ft

<b>Wellbore</b>	Wellbore #1				
<b>Magnetics</b>	<b>Model Name</b>	<b>Sample Date</b>	<b>Declination (°)</b>	<b>Dip Angle (°)</b>	<b>Field Strength (nT)</b>
	HDGM	9/8/2017	8.55	67.28	52,814

<b>Design</b>	Plan #2 (10-11-17)			
<b>Audit Notes:</b>				
<b>Version:</b>	<b>Phase:</b>	PROTOTYPE	<b>Tie On Depth:</b>	0.0
<b>Vertical Section:</b>	<b>Depth From (TVD) (ft)</b>	<b>+N/-S (ft)</b>	<b>+E/-W (ft)</b>	<b>Direction (°)</b>
	0.0	0.0	0.0	176.31

<b>Plan Sections</b>										
Measured Depth (ft)	Inclination (°)	Azimuth (°)	Vertical Depth (ft)	+N/-S (ft)	+E/-W (ft)	Dogleg Rate (°/100usft)	Build Rate (°/100usft)	Turn Rate (°/100usft)	TFO (°)	Target
0.0	0.00	0.00	0.0	0.0	0.0	0.00	0.00	0.00	0.00	
200.0	0.00	0.00	200.0	0.0	0.0	0.00	0.00	0.00	0.00	
630.9	6.46	30.53	630.0	20.9	12.3	1.50	1.50	0.00	30.53	
3,697.9	6.46	30.53	3,677.5	318.3	187.7	0.00	0.00	0.00	0.00	
4,021.1	0.00	0.00	4,000.0	334.0	197.0	2.00	-2.00	0.00	180.00	
6,970.9	0.00	0.00	6,949.8	334.0	197.0	0.00	0.00	0.00	0.00	
8,091.9	89.68	174.64	7,666.0	-375.1	263.5	8.00	8.00	0.00	174.64	
8,092.5	89.68	174.64	7,666.0	-375.6	263.6	0.00	0.00	0.00	0.00	LPL 735'FNL & 350'FI
8,095.4	89.68	174.67	7,666.0	-378.5	263.8	1.00	-0.09	1.00	95.18	
12,816.7	89.68	174.67	7,692.6	-5,079.3	702.4	0.00	0.00	0.00	0.00	WP (201-1015H)
13,446.7	89.68	180.97	7,696.2	-5,708.6	726.4	1.00	0.00	1.00	90.03	
17,840.3	89.68	180.97	7,721.0	-10,101.4	652.0	0.00	0.00	0.00	0.00	BHL 300'FSL & 350'F

Database:	US_EDM	Local Co-ordinate Reference:	Well Salt Ranch Fee 201-1015H
Company:	Clear Creek Resource Partners	TVD Reference:	WELL @ 5456.0ft (Original Well Elev)
Project:	SEC.10-T11N-R64W	MD Reference:	WELL @ 5456.0ft (Original Well Elev)
Site:	Salt Ranch East 10 Pad Sec.10-T11N-R64W	North Reference:	True
Well:	Salt Ranch Fee 201-1015H	Survey Calculation Method:	Minimum Curvature
Wellbore:	Wellbore #1		
Design:	Plan #2 (10-11-17)		

Planned Survey									
Measured Depth (ft)	Inclination (°)	Azimuth (°)	Vertical Depth (ft)	+N/-S (ft)	+E/-W (ft)	Vertical Section (ft)	Dogleg Rate (°/100usft)	Build Rate (°/100usft)	Turn Rate (°/100usft)
0.0	0.00	0.00	0.0	0.0	0.0	0.0	0.00	0.00	0.00
1.0	0.00	0.00	1.0	0.0	0.0	0.0	0.00	0.00	0.00
SHL 358'FNL & 578'FEL, Sec.10									
100.0	0.00	0.00	100.0	0.0	0.0	0.0	0.00	0.00	0.00
200.0	0.00	0.00	200.0	0.0	0.0	0.0	0.00	0.00	0.00
KOP - Start Build 1.50									
300.0	1.50	30.53	300.0	1.1	0.7	-1.1	1.50	1.50	0.00
400.0	3.00	30.53	399.9	4.5	2.7	-4.3	1.50	1.50	0.00
500.0	4.50	30.53	499.7	10.1	6.0	-9.7	1.50	1.50	0.00
600.0	6.00	30.53	599.3	18.0	10.6	-17.3	1.50	1.50	0.00
630.9	6.46	30.53	630.0	20.9	12.3	-20.1	1.50	1.50	0.00
700.0	6.46	30.53	698.6	27.6	16.3	-26.5	0.00	0.00	0.00
800.0	6.46	30.53	798.0	37.3	22.0	-35.8	0.00	0.00	0.00
900.0	6.46	30.53	897.4	47.0	27.7	-45.1	0.00	0.00	0.00
1,000.0	6.46	30.53	996.7	56.7	33.4	-54.4	0.00	0.00	0.00
1,100.0	6.46	30.53	1,096.1	66.4	39.2	-63.7	0.00	0.00	0.00
1,200.0	6.46	30.53	1,195.5	76.1	44.9	-73.0	0.00	0.00	0.00
1,300.0	6.46	30.53	1,294.8	85.8	50.6	-82.4	0.00	0.00	0.00
1,400.0	6.46	30.53	1,394.2	95.5	56.3	-91.7	0.00	0.00	0.00
1,500.0	6.46	30.53	1,493.6	105.2	62.0	-101.0	0.00	0.00	0.00
1,600.0	6.46	30.53	1,592.9	114.9	67.8	-110.3	0.00	0.00	0.00
1,700.0	6.46	30.53	1,692.3	124.6	73.5	-119.6	0.00	0.00	0.00
1,800.0	6.46	30.53	1,791.7	134.3	79.2	-128.9	0.00	0.00	0.00
1,900.0	6.46	30.53	1,891.0	144.0	84.9	-138.2	0.00	0.00	0.00
2,000.0	6.46	30.53	1,990.4	153.7	90.6	-147.5	0.00	0.00	0.00
2,100.0	6.46	30.53	2,089.7	163.4	96.4	-156.8	0.00	0.00	0.00
2,200.0	6.46	30.53	2,189.1	173.1	102.1	-166.1	0.00	0.00	0.00
2,300.0	6.46	30.53	2,288.5	182.8	107.8	-175.4	0.00	0.00	0.00
2,400.0	6.46	30.53	2,387.8	192.5	113.5	-184.7	0.00	0.00	0.00
2,500.0	6.46	30.53	2,487.2	202.2	119.2	-194.1	0.00	0.00	0.00
2,600.0	6.46	30.53	2,586.6	211.9	125.0	-203.4	0.00	0.00	0.00
2,700.0	6.46	30.53	2,685.9	221.5	130.7	-212.7	0.00	0.00	0.00
2,800.0	6.46	30.53	2,785.3	231.2	136.4	-222.0	0.00	0.00	0.00
2,900.0	6.46	30.53	2,884.7	240.9	142.1	-231.3	0.00	0.00	0.00
3,000.0	6.46	30.53	2,984.0	250.6	147.8	-240.6	0.00	0.00	0.00
3,100.0	6.46	30.53	3,083.4	260.3	153.6	-249.9	0.00	0.00	0.00
3,200.0	6.46	30.53	3,182.8	270.0	159.3	-259.2	0.00	0.00	0.00
3,300.0	6.46	30.53	3,282.1	279.7	165.0	-268.5	0.00	0.00	0.00
3,400.0	6.46	30.53	3,381.5	289.4	170.7	-277.8	0.00	0.00	0.00
3,500.0	6.46	30.53	3,480.8	299.1	176.4	-287.1	0.00	0.00	0.00
3,600.0	6.46	30.53	3,580.2	308.8	182.1	-296.4	0.00	0.00	0.00
3,697.9	6.46	30.53	3,677.5	318.3	187.7	-305.6	0.00	0.00	0.00
Start Drop -2.00									
3,700.0	6.42	30.53	3,679.6	318.5	187.9	-305.8	2.00	-2.00	0.00
3,800.0	4.42	30.53	3,779.1	326.7	192.7	-313.6	2.00	-2.00	0.00
3,900.0	2.42	30.53	3,878.9	331.8	195.7	-318.5	2.00	-2.00	0.00
4,000.0	0.42	30.53	3,978.9	333.9	197.0	-320.6	2.00	-2.00	0.00
4,021.1	0.00	0.00	4,000.0	334.0	197.0	-320.6	2.00	-2.00	0.00
4,100.0	0.00	0.00	4,078.9	334.0	197.0	-320.6	0.00	0.00	0.00
4,200.0	0.00	0.00	4,178.9	334.0	197.0	-320.6	0.00	0.00	0.00
4,300.0	0.00	0.00	4,278.9	334.0	197.0	-320.6	0.00	0.00	0.00
4,400.0	0.00	0.00	4,378.9	334.0	197.0	-320.6	0.00	0.00	0.00
4,500.0	0.00	0.00	4,478.9	334.0	197.0	-320.6	0.00	0.00	0.00

<b>Database:</b>	US_EDM	<b>Local Co-ordinate Reference:</b>	Well Salt Ranch Fee 201-1015H
<b>Company:</b>	Clear Creek Resource Partners	<b>TVD Reference:</b>	WELL @ 5456.0ft (Original Well Elev)
<b>Project:</b>	SEC.10-T11N-R64W	<b>MD Reference:</b>	WELL @ 5456.0ft (Original Well Elev)
<b>Site:</b>	Salt Ranch East 10 Pad Sec.10-T11N-R64W	<b>North Reference:</b>	True
<b>Well:</b>	Salt Ranch Fee 201-1015H	<b>Survey Calculation Method:</b>	Minimum Curvature
<b>Wellbore:</b>	Wellbore #1		
<b>Design:</b>	Plan #2 (10-11-17)		

Planned Survey									
Measured Depth (ft)	Inclination (°)	Azimuth (°)	Vertical Depth (ft)	+N/-S (ft)	+E/-W (ft)	Vertical Section (ft)	Dogleg Rate (°/100usft)	Build Rate (°/100usft)	Turn Rate (°/100usft)
4,600.0	0.00	0.00	4,578.9	334.0	197.0	-320.6	0.00	0.00	0.00
4,700.0	0.00	0.00	4,678.9	334.0	197.0	-320.6	0.00	0.00	0.00
4,800.0	0.00	0.00	4,778.9	334.0	197.0	-320.6	0.00	0.00	0.00
4,900.0	0.00	0.00	4,878.9	334.0	197.0	-320.6	0.00	0.00	0.00
5,000.0	0.00	0.00	4,978.9	334.0	197.0	-320.6	0.00	0.00	0.00
5,100.0	0.00	0.00	5,078.9	334.0	197.0	-320.6	0.00	0.00	0.00
5,200.0	0.00	0.00	5,178.9	334.0	197.0	-320.6	0.00	0.00	0.00
5,300.0	0.00	0.00	5,278.9	334.0	197.0	-320.6	0.00	0.00	0.00
5,400.0	0.00	0.00	5,378.9	334.0	197.0	-320.6	0.00	0.00	0.00
5,500.0	0.00	0.00	5,478.9	334.0	197.0	-320.6	0.00	0.00	0.00
5,600.0	0.00	0.00	5,578.9	334.0	197.0	-320.6	0.00	0.00	0.00
5,700.0	0.00	0.00	5,678.9	334.0	197.0	-320.6	0.00	0.00	0.00
5,800.0	0.00	0.00	5,778.9	334.0	197.0	-320.6	0.00	0.00	0.00
5,900.0	0.00	0.00	5,878.9	334.0	197.0	-320.6	0.00	0.00	0.00
6,000.0	0.00	0.00	5,978.9	334.0	197.0	-320.6	0.00	0.00	0.00
6,100.0	0.00	0.00	6,078.9	334.0	197.0	-320.6	0.00	0.00	0.00
6,200.0	0.00	0.00	6,178.9	334.0	197.0	-320.6	0.00	0.00	0.00
6,300.0	0.00	0.00	6,278.9	334.0	197.0	-320.6	0.00	0.00	0.00
6,400.0	0.00	0.00	6,378.9	334.0	197.0	-320.6	0.00	0.00	0.00
6,500.0	0.00	0.00	6,478.9	334.0	197.0	-320.6	0.00	0.00	0.00
6,600.0	0.00	0.00	6,578.9	334.0	197.0	-320.6	0.00	0.00	0.00
6,700.0	0.00	0.00	6,678.9	334.0	197.0	-320.6	0.00	0.00	0.00
6,800.0	0.00	0.00	6,778.9	334.0	197.0	-320.6	0.00	0.00	0.00
6,900.0	0.00	0.00	6,878.9	334.0	197.0	-320.6	0.00	0.00	0.00
6,970.9	0.00	0.00	6,949.8	334.0	197.0	-320.6	0.00	0.00	0.00
<b>KOP #2 - Start Build 8.00</b>									
7,000.0	2.33	174.64	6,978.9	333.4	197.1	-320.0	8.00	8.00	0.00
7,100.0	10.33	174.64	7,078.2	322.4	198.1	-309.0	8.00	8.00	0.00
7,200.0	18.33	174.64	7,175.0	297.8	200.4	-284.3	8.00	8.00	0.00
7,300.0	26.33	174.64	7,267.4	260.0	203.9	-246.4	8.00	8.00	0.00
7,400.0	34.33	174.64	7,353.7	209.8	208.7	-195.9	8.00	8.00	0.00
7,500.0	42.33	174.64	7,432.1	148.1	214.4	-134.0	8.00	8.00	0.00
7,600.0	50.33	174.64	7,501.1	76.2	221.2	-61.7	8.00	8.00	0.00
7,700.0	58.33	174.64	7,559.3	-4.7	228.8	19.4	8.00	8.00	0.00
7,800.0	66.33	174.64	7,605.7	-92.8	237.0	107.8	8.00	8.00	0.00
7,900.0	74.33	174.64	7,639.4	-186.4	245.8	201.9	8.00	8.00	0.00
8,000.0	82.33	174.64	7,659.6	-283.9	255.0	299.7	8.00	8.00	0.00
8,091.9	89.68	174.64	7,666.0	-375.1	263.5	391.3	8.00	8.00	0.00
8,092.5	89.68	174.64	7,666.0	-375.6	263.6	391.8	0.00	0.00	0.00
<b>Start DLS 1.00 TFO 95.18 - LPL 735°FNL &amp; 350°FEL, Sec.10</b>									
8,095.4	89.68	174.67	7,666.0	-378.5	263.8	394.7	1.00	-0.09	1.00
8,100.0	89.68	174.67	7,666.0	-383.1	264.3	399.4	0.00	0.00	0.00
8,200.0	89.68	174.67	7,666.6	-482.7	273.6	499.3	0.00	0.00	0.00
8,300.0	89.68	174.67	7,667.2	-582.3	282.9	599.3	0.00	0.00	0.00
8,400.0	89.68	174.67	7,667.7	-681.8	292.1	699.2	0.00	0.00	0.00
8,500.0	89.68	174.67	7,668.3	-781.4	301.4	799.2	0.00	0.00	0.00
8,600.0	89.68	174.67	7,668.9	-881.0	310.7	899.2	0.00	0.00	0.00
8,700.0	89.68	174.67	7,669.4	-980.5	320.0	999.1	0.00	0.00	0.00
8,800.0	89.68	174.67	7,670.0	-1,080.1	329.3	1,099.1	0.00	0.00	0.00
8,900.0	89.68	174.67	7,670.5	-1,179.7	338.6	1,199.0	0.00	0.00	0.00
9,000.0	89.68	174.67	7,671.1	-1,279.2	347.9	1,299.0	0.00	0.00	0.00
9,100.0	89.68	174.67	7,671.7	-1,378.8	357.2	1,398.9	0.00	0.00	0.00
9,200.0	89.68	174.67	7,672.2	-1,478.4	366.5	1,498.9	0.00	0.00	0.00
9,300.0	89.68	174.67	7,672.8	-1,577.9	375.7	1,598.9	0.00	0.00	0.00

<b>Database:</b>	US_EDM	<b>Local Co-ordinate Reference:</b>	Well Salt Ranch Fee 201-1015H
<b>Company:</b>	Clear Creek Resource Partners	<b>TVD Reference:</b>	WELL @ 5456.0ft (Original Well Elev)
<b>Project:</b>	SEC.10-T11N-R64W	<b>MD Reference:</b>	WELL @ 5456.0ft (Original Well Elev)
<b>Site:</b>	Salt Ranch East 10 Pad Sec.10-T11N-R64W	<b>North Reference:</b>	True
<b>Well:</b>	Salt Ranch Fee 201-1015H	<b>Survey Calculation Method:</b>	Minimum Curvature
<b>Wellbore:</b>	Wellbore #1		
<b>Design:</b>	Plan #2 (10-11-17)		

Planned Survey									
Measured Depth (ft)	Inclination (°)	Azimuth (°)	Vertical Depth (ft)	+N/-S (ft)	+E/-W (ft)	Vertical Section (ft)	Dogleg Rate (°/100usft)	Build Rate (°/100usft)	Turn Rate (°/100usft)
9,400.0	89.68	174.67	7,673.4	-1,677.5	385.0	1,698.8	0.00	0.00	0.00
9,500.0	89.68	174.67	7,673.9	-1,777.1	394.3	1,798.8	0.00	0.00	0.00
9,600.0	89.68	174.67	7,674.5	-1,876.6	403.6	1,898.7	0.00	0.00	0.00
9,700.0	89.68	174.67	7,675.1	-1,976.2	412.9	1,998.7	0.00	0.00	0.00
9,800.0	89.68	174.67	7,675.6	-2,075.8	422.2	2,098.6	0.00	0.00	0.00
9,900.0	89.68	174.67	7,676.2	-2,175.3	431.5	2,198.6	0.00	0.00	0.00
10,000.0	89.68	174.67	7,676.7	-2,274.9	440.8	2,298.6	0.00	0.00	0.00
10,100.0	89.68	174.67	7,677.3	-2,374.5	450.1	2,398.5	0.00	0.00	0.00
10,200.0	89.68	174.67	7,677.9	-2,474.0	459.4	2,498.5	0.00	0.00	0.00
10,300.0	89.68	174.67	7,678.4	-2,573.6	468.6	2,598.4	0.00	0.00	0.00
10,400.0	89.68	174.67	7,679.0	-2,673.2	477.9	2,698.4	0.00	0.00	0.00
10,500.0	89.68	174.67	7,679.6	-2,772.7	487.2	2,798.4	0.00	0.00	0.00
10,600.0	89.68	174.67	7,680.1	-2,872.3	496.5	2,898.3	0.00	0.00	0.00
10,700.0	89.68	174.67	7,680.7	-2,971.9	505.8	2,998.3	0.00	0.00	0.00
10,800.0	89.68	174.67	7,681.2	-3,071.4	515.1	3,098.2	0.00	0.00	0.00
10,900.0	89.68	174.67	7,681.8	-3,171.0	524.4	3,198.2	0.00	0.00	0.00
11,000.0	89.68	174.67	7,682.4	-3,270.6	533.7	3,298.1	0.00	0.00	0.00
11,100.0	89.68	174.67	7,682.9	-3,370.1	543.0	3,398.1	0.00	0.00	0.00
11,200.0	89.68	174.67	7,683.5	-3,469.7	552.3	3,498.1	0.00	0.00	0.00
11,300.0	89.68	174.67	7,684.1	-3,569.3	561.5	3,598.0	0.00	0.00	0.00
11,400.0	89.68	174.67	7,684.6	-3,668.8	570.8	3,698.0	0.00	0.00	0.00
11,500.0	89.68	174.67	7,685.2	-3,768.4	580.1	3,797.9	0.00	0.00	0.00
11,600.0	89.68	174.67	7,685.7	-3,868.0	589.4	3,897.9	0.00	0.00	0.00
11,700.0	89.68	174.67	7,686.3	-3,967.5	598.7	3,997.8	0.00	0.00	0.00
11,800.0	89.68	174.67	7,686.9	-4,067.1	608.0	4,097.8	0.00	0.00	0.00
11,900.0	89.68	174.67	7,687.4	-4,166.6	617.3	4,197.8	0.00	0.00	0.00
12,000.0	89.68	174.67	7,688.0	-4,266.2	626.6	4,297.7	0.00	0.00	0.00
12,100.0	89.68	174.67	7,688.6	-4,365.8	635.9	4,397.7	0.00	0.00	0.00
12,200.0	89.68	174.67	7,689.1	-4,465.3	645.2	4,497.6	0.00	0.00	0.00
12,300.0	89.68	174.67	7,689.7	-4,564.9	654.4	4,597.6	0.00	0.00	0.00
12,400.0	89.68	174.67	7,690.3	-4,664.5	663.7	4,697.5	0.00	0.00	0.00
12,500.0	89.68	174.67	7,690.8	-4,764.0	673.0	4,797.5	0.00	0.00	0.00
12,600.0	89.68	174.67	7,691.4	-4,863.6	682.3	4,897.5	0.00	0.00	0.00
12,700.0	89.68	174.67	7,691.9	-4,963.2	691.6	4,997.4	0.00	0.00	0.00
12,800.0	89.68	174.67	7,692.5	-5,062.7	700.9	5,097.4	0.00	0.00	0.00
12,816.7	89.68	174.67	7,692.6	-5,079.3	702.4	5,114.0	0.00	0.00	0.00
Start DLS 1.00 TFO 90.03 - WP (201-1015H)									
12,900.0	89.68	175.50	7,693.1	-5,162.4	709.6	5,197.3	1.00	0.00	1.00
13,000.0	89.68	176.50	7,693.6	-5,262.1	716.5	5,297.3	1.00	0.00	1.00
13,100.0	89.68	177.50	7,694.2	-5,362.0	721.8	5,397.3	1.00	0.00	1.00
13,200.0	89.68	178.50	7,694.8	-5,461.9	725.3	5,497.3	1.00	0.00	1.00
13,300.0	89.68	179.50	7,695.3	-5,561.9	727.0	5,597.2	1.00	0.00	1.00
13,400.0	89.68	180.50	7,695.9	-5,661.9	727.0	5,697.0	1.00	0.00	1.00
13,446.7	89.68	180.97	7,696.2	-5,708.6	726.4	5,743.5	1.00	0.00	1.00
13,500.0	89.68	180.97	7,696.5	-5,761.9	725.5	5,796.6	0.00	0.00	0.00
13,600.0	89.68	180.97	7,697.0	-5,861.9	723.8	5,896.3	0.00	0.00	0.00
13,700.0	89.68	180.97	7,697.6	-5,961.8	722.1	5,996.0	0.00	0.00	0.00
13,800.0	89.68	180.97	7,698.2	-6,061.8	720.4	6,095.6	0.00	0.00	0.00
13,900.0	89.68	180.97	7,698.7	-6,161.8	718.7	6,195.3	0.00	0.00	0.00
14,000.0	89.68	180.97	7,699.3	-6,261.8	717.0	6,295.0	0.00	0.00	0.00
14,100.0	89.68	180.97	7,699.9	-6,361.8	715.3	6,394.6	0.00	0.00	0.00
14,200.0	89.68	180.97	7,700.4	-6,461.8	713.6	6,494.3	0.00	0.00	0.00
14,300.0	89.68	180.97	7,701.0	-6,561.8	711.9	6,594.0	0.00	0.00	0.00
14,400.0	89.68	180.97	7,701.5	-6,661.7	710.3	6,693.7	0.00	0.00	0.00

<b>Database:</b>	US_EDM	<b>Local Co-ordinate Reference:</b>	Well Salt Ranch Fee 201-1015H
<b>Company:</b>	Clear Creek Resource Partners	<b>TVD Reference:</b>	WELL @ 5456.0ft (Original Well Elev)
<b>Project:</b>	SEC.10-T11N-R64W	<b>MD Reference:</b>	WELL @ 5456.0ft (Original Well Elev)
<b>Site:</b>	Salt Ranch East 10 Pad Sec.10-T11N-R64W	<b>North Reference:</b>	True
<b>Well:</b>	Salt Ranch Fee 201-1015H	<b>Survey Calculation Method:</b>	Minimum Curvature
<b>Wellbore:</b>	Wellbore #1		
<b>Design:</b>	Plan #2 (10-11-17)		

Planned Survey									
Measured Depth (ft)	Inclination (°)	Azimuth (°)	Vertical Depth (ft)	+N/-S (ft)	+E/-W (ft)	Vertical Section (ft)	Dogleg Rate (°/100usft)	Build Rate (°/100usft)	Turn Rate (°/100usft)
14,500.0	89.68	180.97	7,702.1	-6,761.7	708.6	6,793.3	0.00	0.00	0.00
14,600.0	89.68	180.97	7,702.7	-6,861.7	706.9	6,893.0	0.00	0.00	0.00
14,700.0	89.68	180.97	7,703.2	-6,961.7	705.2	6,992.7	0.00	0.00	0.00
14,800.0	89.68	180.97	7,703.8	-7,061.7	703.5	7,092.3	0.00	0.00	0.00
14,900.0	89.68	180.97	7,704.4	-7,161.7	701.8	7,192.0	0.00	0.00	0.00
15,000.0	89.68	180.97	7,704.9	-7,261.6	700.1	7,291.7	0.00	0.00	0.00
15,100.0	89.68	180.97	7,705.5	-7,361.6	698.4	7,391.3	0.00	0.00	0.00
15,200.0	89.68	180.97	7,706.1	-7,461.6	696.7	7,491.0	0.00	0.00	0.00
15,300.0	89.68	180.97	7,706.6	-7,561.6	695.0	7,590.7	0.00	0.00	0.00
15,400.0	89.68	180.97	7,707.2	-7,661.6	693.3	7,690.3	0.00	0.00	0.00
15,500.0	89.68	180.97	7,707.8	-7,761.6	691.6	7,790.0	0.00	0.00	0.00
15,600.0	89.68	180.97	7,708.3	-7,861.5	689.9	7,889.7	0.00	0.00	0.00
15,700.0	89.68	180.97	7,708.9	-7,961.5	688.2	7,989.3	0.00	0.00	0.00
15,800.0	89.68	180.97	7,709.5	-8,061.5	686.5	8,089.0	0.00	0.00	0.00
15,900.0	89.68	180.97	7,710.0	-8,161.5	684.9	8,188.7	0.00	0.00	0.00
16,000.0	89.68	180.97	7,710.6	-8,261.5	683.2	8,288.3	0.00	0.00	0.00
16,100.0	89.68	180.97	7,711.2	-8,361.5	681.5	8,388.0	0.00	0.00	0.00
16,200.0	89.68	180.97	7,711.7	-8,461.4	679.8	8,487.7	0.00	0.00	0.00
16,300.0	89.68	180.97	7,712.3	-8,561.4	678.1	8,587.3	0.00	0.00	0.00
16,400.0	89.68	180.97	7,712.9	-8,661.4	676.4	8,687.0	0.00	0.00	0.00
16,500.0	89.68	180.97	7,713.4	-8,761.4	674.7	8,786.7	0.00	0.00	0.00
16,600.0	89.68	180.97	7,714.0	-8,861.4	673.0	8,886.3	0.00	0.00	0.00
16,700.0	89.68	180.97	7,714.6	-8,961.4	671.3	8,986.0	0.00	0.00	0.00
16,800.0	89.68	180.97	7,715.1	-9,061.4	669.6	9,085.7	0.00	0.00	0.00
16,900.0	89.68	180.97	7,715.7	-9,161.3	667.9	9,185.3	0.00	0.00	0.00
17,000.0	89.68	180.97	7,716.2	-9,261.3	666.2	9,285.0	0.00	0.00	0.00
17,100.0	89.68	180.97	7,716.8	-9,361.3	664.5	9,384.7	0.00	0.00	0.00
17,200.0	89.68	180.97	7,717.4	-9,461.3	662.8	9,484.3	0.00	0.00	0.00
17,300.0	89.68	180.97	7,717.9	-9,561.3	661.1	9,584.0	0.00	0.00	0.00
17,400.0	89.68	180.97	7,718.5	-9,661.3	659.5	9,683.7	0.00	0.00	0.00
17,500.0	89.68	180.97	7,719.1	-9,761.2	657.8	9,783.3	0.00	0.00	0.00
17,600.0	89.68	180.97	7,719.6	-9,861.2	656.1	9,883.0	0.00	0.00	0.00
17,700.0	89.68	180.97	7,720.2	-9,961.2	654.4	9,982.7	0.00	0.00	0.00
17,800.0	89.68	180.97	7,720.8	-10,061.2	652.7	10,082.3	0.00	0.00	0.00
17,840.3	89.68	180.97	7,721.0	-10,101.4	652.0	10,122.5	0.00	0.00	0.00
TD at 17840.3 - BHL 300°FSL & 350°FEL, Sec.15									

<b>Database:</b>	US_EDM	<b>Local Co-ordinate Reference:</b>	Well Salt Ranch Fee 201-1015H
<b>Company:</b>	Clear Creek Resource Partners	<b>TVD Reference:</b>	WELL @ 5456.0ft (Original Well Elev)
<b>Project:</b>	SEC.10-T11N-R64W	<b>MD Reference:</b>	WELL @ 5456.0ft (Original Well Elev)
<b>Site:</b>	Salt Ranch East 10 Pad Sec.10-T11N-R64W	<b>North Reference:</b>	True
<b>Well:</b>	Salt Ranch Fee 201-1015H	<b>Survey Calculation Method:</b>	Minimum Curvature
<b>Wellbore:</b>	Wellbore #1		
<b>Design:</b>	Plan #2 (10-11-17)		

Design Targets									
Target Name	Dip Angle	Dip Dir.	TVD	+N/-S	+E/-W	Northing	Easting	Latitude	Longitude
- hit/miss target	(°)	(°)	(ft)	(ft)	(ft)	(usft)	(usft)		
- Shape									
SHL 358'FNL & 578'FEL - plan hits target center - Point	0.00	0.00	1.0	0.0	0.0	1,587,572.01	3,269,179.91	40.942190	-104.525689
LPL 735'FNL & 350'FEL - plan hits target center - Point	0.00	0.00	7,666.0	-375.6	263.6	1,587,199.28	3,269,447.60	40.941159	-104.524735
WP (201-1015H) - plan hits target center - Point	0.00	0.00	7,692.6	-5,079.3	702.4	1,582,500.56	3,269,938.13	40.928249	-104.523147
BHL 300'FSL & 350'FEL - plan hits target center - Point	0.00	0.00	7,721.0	-10,101.4	652.0	1,577,478.06	3,269,942.88	40.914465	-104.523330

Plan Annotations				
Measured Depth	Vertical Depth	Local Coordinates		Comment
(ft)	(ft)	+N/-S (ft)	+E/-W (ft)	
200.0	200.0	0.0	0.0	KOP - Start Build 1.50
3,697.9	3,677.5	318.3	187.7	Start Drop -2.00
6,970.9	6,949.8	334.0	197.0	KOP #2 - Start Build 8.00
8,092.5	7,666.0	-375.7	263.6	Start DLS 1.00 TFO 95.18
12,816.7	7,692.6	-5,079.4	702.4	Start DLS 1.00 TFO 90.03
17,840.3	7,721.0	-10,101.4	652.0	TD at 17840.3





## **Clear Creek Resource Partners**

**SEC.10-T11N-R64W**

**Salt Ranch East 10 Pad Sec.10-T11N-R64W**

**Salt Ranch Fee 201-1015H**

**Wellbore #1**

**Plan #2 (10-11-17)**

## **Anticollision Report**

**11 October, 2017**

<b>Company:</b>	Clear Creek Resource Partners	<b>Local Co-ordinate Reference:</b>	Well Salt Ranch Fee 201-1015H
<b>Project:</b>	SEC.10-T11N-R64W	<b>TVD Reference:</b>	WELL @ 5456.0ft (Original Well Elev)
<b>Reference Site:</b>	Salt Ranch East 10 Pad Sec.10-T11N-R64W	<b>MD Reference:</b>	WELL @ 5456.0ft (Original Well Elev)
<b>Site Error:</b>	0.0 ft	<b>North Reference:</b>	True
<b>Reference Well:</b>	Salt Ranch Fee 201-1015H	<b>Survey Calculation Method:</b>	Minimum Curvature
<b>Well Error:</b>	0.0 ft	<b>Output errors are at</b>	2.00 sigma
<b>Reference Wellbore</b>	Wellbore #1	<b>Database:</b>	US_EDM
<b>Reference Design:</b>	Plan #2 (10-11-17)	<b>Offset TVD Reference:</b>	Offset Datum

<b>Reference</b>	Plan #2 (10-11-17)		
<b>Filter type:</b>	NO GLOBAL FILTER: Using user defined selection & filtering criteria		
<b>Interpolation Method:</b>	MD Interval 100.0ft	<b>Error Model:</b>	ISCWSA
<b>Depth Range:</b>	Unlimited	<b>Scan Method:</b>	Closest Approach 3D
<b>Results Limited by:</b>	Maximum center-center distance of 500.0 ft	<b>Error Surface:</b>	Elliptical Conic
<b>Warning Levels Evaluated at:</b>	2.00 Sigma	<b>Casing Method:</b>	Not applied

Survey Tool Program		Date	10/11/2017		
From (ft)	To (ft)	Survey (Wellbore)	Tool Name	Description	
0.0	17,840.3	Plan #2 (10-11-17) (Wellbore #1)	MWD	MWD - Standard	

Summary						
Site Name Offset Well - Wellbore - Design	Reference Measured	Offset Measured	Distance		Separation Factor	Warning
	Depth (ft)	Depth (ft)	Between Centres (ft)	Between Ellipses (ft)		
Salt Ranch East 10 Pad Sec.10-T11N-R64W						
Salt Ranch Fee 202-1015H - Wellbore #1 - Plan #2 (10-1	200.0	200.0	60.0	59.3	88.916	CC, ES
Salt Ranch Fee 202-1015H - Wellbore #1 - Plan #2 (10-1	1,000.0	994.7	110.7	106.3	25.291	SF
Salt Ranch Fee 501-1015H - Wellbore #1 - Plan #2 (10-1	200.0	200.0	29.8	29.2	44.253	CC
Salt Ranch Fee 501-1015H - Wellbore #1 - Plan #2 (10-1	17,840.3	18,040.8	228.5	18.6	1.088	Level 2, ES, SF
Salt Ranch Fee 502-1015H - Wellbore #1 - Plan #2 (10-1	200.0	200.0	89.8	89.1	133.170	CC, ES
Salt Ranch Fee 502-1015H - Wellbore #1 - Plan #2 (10-1	2,300.0	2,239.5	483.2	471.4	40.824	SF

Offset Design		Salt Ranch East 10 Pad Sec.10-T11N-R64W - Salt Ranch Fee 202-1015H - Wellbore #1 - Plan #2 (10-1											Offset Site Error:		0.0 ft
Survey Program:		0-MWD											Offset Well Error:		0.0 ft
Reference		Offset		Semi Major Axis			Distance							Warning	
Measured Depth (ft)	Vertical Depth (ft)	Measured Depth (ft)	Vertical Depth (ft)	Reference (ft)	Offset (ft)	Highside Toolface (°)	Offset Wellbore Centre +N/-S (ft)	+E/-W (ft)	Between Centres (ft)	Between Ellipses (ft)	Minimum Separation (ft)	Separation Factor			
0.0	0.0	0.0	0.0	0.0	0.0	-89.31	0.7	-60.0	60.0						
100.0	100.0	100.0	100.0	0.1	0.1	-89.31	0.7	-60.0	60.0	59.7	0.22	266.749	CC, ES		
200.0	200.0	200.0	200.0	0.3	0.3	-89.31	0.7	-60.0	60.0	59.3	0.67	88.916			
300.0	300.0	300.0	300.0	0.6	0.6	-120.90	0.7	-60.0	60.6	59.5	1.12	53.883			
400.0	399.9	399.9	399.9	0.8	0.8	-123.96	0.7	-60.0	62.7	61.1	1.58	39.672			
500.0	499.7	499.7	499.7	1.0	1.0	-128.58	0.7	-60.0	66.6	64.6	2.05	32.532			
600.0	599.3	599.3	599.3	1.3	1.2	-134.15	0.7	-60.0	72.7	70.1	2.52	28.783			
700.0	698.6	698.6	698.6	1.6	1.5	-139.78	0.7	-60.0	80.8	77.8	3.00	26.972			
800.0	798.0	798.0	798.0	1.8	1.7	-144.42	0.7	-60.0	89.8	86.3	3.46	25.926			
900.0	897.4	896.4	896.4	2.1	1.9	-147.52	1.5	-60.9	99.6	95.7	3.92	25.422			
1,000.0	996.7	994.7	994.6	2.4	2.1	-148.83	3.8	-63.8	110.7	106.3	4.38	25.291	SF		
1,100.0	1,096.1	1,092.8	1,092.5	2.7	2.3	-148.81	7.8	-68.7	122.8	118.0	4.85	25.342			
1,200.0	1,195.5	1,190.6	1,189.9	3.0	2.6	-147.80	13.2	-75.5	135.9	130.6	5.33	25.499			
1,300.0	1,294.8	1,288.0	1,286.6	3.3	2.8	-146.10	20.3	-84.2	150.1	144.3	5.83	25.734			
1,400.0	1,394.2	1,385.8	1,383.6	3.6	3.1	-144.01	28.6	-94.6	165.4	159.0	6.36	26.012			
1,500.0	1,493.6	1,484.5	1,481.3	3.9	3.4	-142.19	37.2	-105.2	181.0	174.1	6.89	26.251			
1,600.0	1,592.9	1,583.1	1,578.9	4.2	3.7	-140.66	45.9	-115.9	196.7	189.3	7.44	26.451			
1,700.0	1,692.3	1,681.7	1,676.6	4.5	4.0	-139.35	54.5	-126.6	212.6	204.6	7.99	26.622			
1,800.0	1,791.7	1,780.3	1,774.3	4.8	4.3	-138.23	63.1	-137.3	228.5	220.0	8.54	26.768			
1,900.0	1,891.0	1,879.0	1,871.9	5.1	4.6	-137.25	71.7	-147.9	244.6	235.5	9.09	26.897			
2,000.0	1,990.4	1,977.6	1,969.6	5.4	4.9	-136.40	80.3	-158.6	260.7	251.0	9.65	27.010			

<b>Company:</b>	Clear Creek Resource Partners	<b>Local Co-ordinate Reference:</b>	Well Salt Ranch Fee 201-1015H
<b>Project:</b>	SEC.10-T11N-R64W	<b>TVD Reference:</b>	WELL @ 5456.0ft (Original Well Elev)
<b>Reference Site:</b>	Salt Ranch East 10 Pad Sec.10-T11N-R64W	<b>MD Reference:</b>	WELL @ 5456.0ft (Original Well Elev)
<b>Site Error:</b>	0.0 ft	<b>North Reference:</b>	True
<b>Reference Well:</b>	Salt Ranch Fee 201-1015H	<b>Survey Calculation Method:</b>	Minimum Curvature
<b>Well Error:</b>	0.0 ft	<b>Output errors are at</b>	2.00 sigma
<b>Reference Wellbore</b>	Wellbore #1	<b>Database:</b>	US_EDM
<b>Reference Design:</b>	Plan #2 (10-11-17)	<b>Offset TVD Reference:</b>	Offset Datum

<b>Offset Design</b>												<b>Offset Site Error:</b>	0.0 ft
Survey Program: 0-MWD												<b>Offset Well Error:</b>	0.0 ft
Reference		Offset		Semi Major Axis			Distance						Warning
Measured Depth (ft)	Vertical Depth (ft)	Measured Depth (ft)	Vertical Depth (ft)	Reference (ft)	Offset (ft)	Highside Toolface (°)	Offset Wellbore Centre +N/-S (ft)	+E/-W (ft)	Between Centres (ft)	Between Ellipses (ft)	Minimum Separation (ft)	Separation Factor	
2,100.0	2,089.7	2,076.2	2,067.3	5.7	5.2	-135.64	88.9	-169.3	276.8	266.6	10.21	27.112	
2,200.0	2,189.1	2,174.8	2,164.9	6.0	5.5	-134.97	97.5	-180.0	293.0	282.2	10.77	27.203	
2,300.0	2,288.5	2,273.5	2,262.6	6.4	5.9	-134.37	106.1	-190.6	309.2	297.9	11.33	27.286	
2,400.0	2,387.8	2,372.1	2,360.3	6.7	6.2	-133.82	114.7	-201.3	325.5	313.6	11.90	27.361	
2,500.0	2,487.2	2,470.7	2,458.0	7.0	6.5	-133.33	123.3	-212.0	341.7	329.3	12.46	27.430	
2,600.0	2,586.6	2,569.4	2,555.6	7.3	6.8	-132.89	131.9	-222.7	358.0	345.0	13.02	27.493	
2,700.0	2,685.9	2,668.0	2,653.3	7.6	7.2	-132.48	140.5	-233.3	374.3	360.8	13.59	27.551	
2,800.0	2,785.3	2,766.6	2,751.0	7.9	7.5	-132.11	149.2	-244.0	390.7	376.5	14.15	27.605	
2,900.0	2,884.7	2,865.2	2,848.6	8.2	7.8	-131.76	157.8	-254.7	407.0	392.3	14.72	27.655	
3,000.0	2,984.0	2,963.9	2,946.3	8.5	8.2	-131.45	166.4	-265.4	423.4	408.1	15.28	27.702	
3,100.0	3,083.4	3,062.5	3,044.0	8.8	8.5	-131.15	175.0	-276.0	439.8	423.9	15.85	27.746	
3,200.0	3,182.8	3,161.1	3,141.6	9.1	8.8	-130.88	183.6	-286.7	456.1	439.7	16.42	27.786	
3,300.0	3,282.1	3,259.7	3,239.3	9.4	9.2	-130.63	192.2	-297.4	472.5	455.6	16.98	27.825	
3,400.0	3,381.5	3,358.4	3,337.0	9.7	9.5	-130.39	200.8	-308.1	488.9	471.4	17.55	27.861	

<b>Company:</b>	Clear Creek Resource Partners	<b>Local Co-ordinate Reference:</b>	Well Salt Ranch Fee 201-1015H
<b>Project:</b>	SEC.10-T11N-R64W	<b>TVD Reference:</b>	WELL @ 5456.0ft (Original Well Elev)
<b>Reference Site:</b>	Salt Ranch East 10 Pad Sec.10-T11N-R64W	<b>MD Reference:</b>	WELL @ 5456.0ft (Original Well Elev)
<b>Site Error:</b>	0.0 ft	<b>North Reference:</b>	True
<b>Reference Well:</b>	Salt Ranch Fee 201-1015H	<b>Survey Calculation Method:</b>	Minimum Curvature
<b>Well Error:</b>	0.0 ft	<b>Output errors are at</b>	2.00 sigma
<b>Reference Wellbore</b>	Wellbore #1	<b>Database:</b>	US_EDM
<b>Reference Design:</b>	Plan #2 (10-11-17)	<b>Offset TVD Reference:</b>	Offset Datum

Offset Design													Offset Site Error:	0.0 ft
Survey Program: 0-MWD													Offset Well Error:	0.0 ft
Reference		Offset		Semi Major Axis			Distance							Warning
Measured Depth (ft)	Vertical Depth (ft)	Measured Depth (ft)	Vertical Depth (ft)	Reference (ft)	Offset (ft)	Highside Toolface (°)	Offset Wellbore Centre +N/-S (ft)	+E/-W (ft)	Between Centres (ft)	Between Ellipses (ft)	Minimum Separation (ft)	Separation Factor		
0.0	0.0	0.0	0.0	0.0	0.0	-89.31	0.4	-29.8	29.8					
100.0	100.0	100.0	100.0	0.1	0.1	-89.31	0.4	-29.8	29.8	29.6	0.22	132.760		
200.0	200.0	200.0	200.0	0.3	0.3	-89.31	0.4	-29.8	29.8	29.2	0.67	44.253 CC		
300.0	300.0	300.0	300.0	0.6	0.6	-121.96	0.4	-29.8	30.5	29.4	1.13	27.118		
400.0	399.9	399.9	399.9	0.8	0.8	-127.77	0.4	-29.8	32.8	31.2	1.58	20.697		
500.0	499.7	500.3	500.3	1.0	1.0	-134.13	1.6	-29.3	36.3	34.3	2.05	17.740		
600.0	599.3	600.8	600.7	1.3	1.2	-138.91	5.2	-27.8	40.6	38.0	2.52	16.080		
700.0	698.6	701.4	701.1	1.6	1.5	-141.93	11.3	-25.3	44.7	41.7	3.00	14.931		
800.0	798.0	802.2	801.5	1.8	1.7	-142.32	19.9	-21.8	47.2	43.7	3.48	13.573		
900.0	897.4	902.4	901.0	2.1	2.0	-141.13	30.1	-17.6	48.5	44.5	3.98	12.173		
1,000.0	996.7	1,002.4	1,000.4	2.4	2.3	-139.96	40.3	-13.3	49.7	45.2	4.50	11.050		
1,100.0	1,096.1	1,102.4	1,099.8	2.7	2.5	-138.85	50.5	-9.1	51.0	45.9	5.03	10.142		
1,200.0	1,195.5	1,202.3	1,199.2	3.0	2.8	-137.79	60.7	-4.9	52.2	46.7	5.56	9.396		
1,300.0	1,294.8	1,302.3	1,298.5	3.3	3.1	-136.78	71.0	-0.7	53.5	47.4	6.10	8.773		
1,400.0	1,394.2	1,402.3	1,397.9	3.6	3.4	-135.82	81.2	3.5	54.8	48.2	6.65	8.246		
1,500.0	1,493.6	1,502.3	1,497.3	3.9	3.7	-134.90	91.4	7.7	56.2	49.0	7.20	7.796		
1,600.0	1,592.9	1,602.3	1,596.7	4.2	4.0	-134.03	101.6	11.9	57.5	49.7	7.76	7.407		
1,700.0	1,692.3	1,702.3	1,696.0	4.5	4.3	-133.19	111.8	16.2	58.8	50.5	8.32	7.069		
1,800.0	1,791.7	1,802.3	1,795.4	4.8	4.6	-132.40	122.0	20.4	60.2	51.3	8.89	6.772		
1,900.0	1,891.0	1,902.3	1,894.8	5.1	4.9	-131.64	132.3	24.6	61.6	52.1	9.46	6.510		
2,000.0	1,990.4	2,002.2	1,994.2	5.4	5.2	-130.91	142.5	28.8	62.9	52.9	10.03	6.276		
2,100.0	2,089.7	2,102.2	2,093.5	5.7	5.5	-130.21	152.7	33.0	64.3	53.7	10.60	6.067		
2,200.0	2,189.1	2,202.2	2,192.9	6.0	5.8	-129.54	162.9	37.2	65.7	54.6	11.18	5.879		
2,300.0	2,288.5	2,302.2	2,292.3	6.4	6.1	-128.90	173.1	41.5	67.1	55.4	11.76	5.709		
2,400.0	2,387.8	2,402.2	2,391.7	6.7	6.4	-128.29	183.3	45.7	68.6	56.2	12.34	5.555		
2,500.0	2,487.2	2,502.2	2,491.0	7.0	6.7	-127.70	193.6	49.9	70.0	57.1	12.92	5.415		
2,600.0	2,586.6	2,602.2	2,590.4	7.3	7.0	-127.14	203.8	54.1	71.4	57.9	13.51	5.286		
2,700.0	2,685.9	2,702.2	2,689.8	7.6	7.3	-126.60	214.0	58.3	72.9	58.8	14.10	5.169		
2,800.0	2,785.3	2,802.1	2,789.2	7.9	7.6	-126.08	224.2	62.5	74.3	59.6	14.68	5.060		
2,900.0	2,884.7	2,902.1	2,888.5	8.2	7.9	-125.57	234.4	66.7	75.7	60.5	15.27	4.960		
3,000.0	2,984.0	3,002.1	2,987.9	8.5	8.2	-125.09	244.6	71.0	77.2	61.3	15.86	4.867		
3,100.0	3,083.4	3,102.1	3,087.3	8.8	8.5	-124.63	254.9	75.2	78.7	62.2	16.45	4.781		
3,200.0	3,182.8	3,202.1	3,186.7	9.1	8.8	-124.18	265.1	79.4	80.1	63.1	17.04	4.701		
3,300.0	3,282.1	3,302.1	3,286.0	9.4	9.1	-123.75	275.3	83.6	81.6	64.0	17.64	4.627		
3,400.0	3,381.5	3,402.1	3,385.4	9.7	9.4	-123.33	285.5	87.8	83.1	64.8	18.23	4.557		
3,500.0	3,480.8	3,502.1	3,484.8	10.0	9.7	-122.93	295.7	92.0	84.5	65.7	18.82	4.492		
3,600.0	3,580.2	3,602.0	3,584.2	10.3	10.0	-122.54	305.9	96.3	86.0	66.6	19.42	4.431		
3,700.0	3,679.6	3,701.9	3,683.3	10.6	10.3	-122.17	316.1	100.5	87.5	67.5	20.01	4.373		
3,800.0	3,779.1	3,800.8	3,781.8	10.8	10.5	-121.85	324.7	104.0	88.7	68.3	20.49	4.331		
3,900.0	3,878.9	3,900.0	3,880.9	11.0	10.7	-121.66	330.1	106.2	89.5	68.6	20.88	4.288		
4,000.0	3,978.9	3,998.3	3,979.2	11.2	10.9	-121.58	332.3	107.1	89.8	68.6	21.20	4.238		
4,100.0	4,078.9	4,098.1	4,078.9	11.3	11.0	-91.05	332.4	107.2	89.9	68.1	21.78	4.125		
4,200.0	4,178.9	4,198.1	4,178.9	11.5	11.2	-91.05	332.4	107.2	89.9	67.7	22.14	4.059		
4,300.0	4,278.9	4,298.1	4,278.9	11.7	11.4	-91.05	332.4	107.2	89.9	67.4	22.50	3.994		
4,400.0	4,378.9	4,398.1	4,378.9	11.9	11.6	-91.05	332.4	107.2	89.9	67.0	22.86	3.931		
4,500.0	4,478.9	4,498.1	4,478.9	12.0	11.7	-91.05	332.4	107.2	89.9	66.6	23.22	3.869		
4,600.0	4,578.9	4,598.1	4,578.9	12.2	11.9	-91.05	332.4	107.2	89.9	66.3	23.59	3.809		
4,700.0	4,678.9	4,698.1	4,678.9	12.4	12.1	-91.05	332.4	107.2	89.9	65.9	23.96	3.750		
4,800.0	4,778.9	4,798.1	4,778.9	12.6	12.3	-91.05	332.4	107.2	89.9	65.5	24.33	3.693		
4,900.0	4,878.9	4,898.1	4,878.9	12.8	12.5	-91.05	332.4	107.2	89.9	65.1	24.71	3.637		
5,000.0	4,978.9	4,998.1	4,978.9	12.9	12.7	-91.05	332.4	107.2	89.9	64.8	25.08	3.582		
5,100.0	5,078.9	5,098.1	5,078.9	13.1	12.9	-91.05	332.4	107.2	89.9	64.4	25.46	3.529		

CC - Min centre to center distance or convergent point, SF - min separation factor, ES - min ellipse separation

<b>Company:</b>	Clear Creek Resource Partners	<b>Local Co-ordinate Reference:</b>	Well Salt Ranch Fee 201-1015H
<b>Project:</b>	SEC.10-T11N-R64W	<b>TVD Reference:</b>	WELL @ 5456.0ft (Original Well Elev)
<b>Reference Site:</b>	Salt Ranch East 10 Pad Sec.10-T11N-R64W	<b>MD Reference:</b>	WELL @ 5456.0ft (Original Well Elev)
<b>Site Error:</b>	0.0 ft	<b>North Reference:</b>	True
<b>Reference Well:</b>	Salt Ranch Fee 201-1015H	<b>Survey Calculation Method:</b>	Minimum Curvature
<b>Well Error:</b>	0.0 ft	<b>Output errors are at</b>	2.00 sigma
<b>Reference Wellbore</b>	Wellbore #1	<b>Database:</b>	US_EDM
<b>Reference Design:</b>	Plan #2 (10-11-17)	<b>Offset TVD Reference:</b>	Offset Datum

Offset Design													Offset Site Error:	0.0 ft
Survey Program: 0-MWD													Offset Well Error:	0.0 ft
Reference		Offset		Semi Major Axis			Distance							Warning
Measured Depth (ft)	Vertical Depth (ft)	Measured Depth (ft)	Vertical Depth (ft)	Reference (ft)	Offset (ft)	Highside Toolface (°)	Offset Wellbore Centre +N/-S (ft)	+E/-W (ft)	Between Centres (ft)	Between Ellipses (ft)	Minimum Separation (ft)	Separation Factor		
5,200.0	5,178.9	5,198.1	5,178.9	13.3	13.0	-91.05	332.4	107.2	89.9	64.0	25.85	3.476		
5,300.0	5,278.9	5,298.1	5,278.9	13.5	13.2	-91.05	332.4	107.2	89.9	63.6	26.23	3.425		
5,400.0	5,378.9	5,398.1	5,378.9	13.7	13.4	-91.05	332.4	107.2	89.9	63.2	26.62	3.376		
5,500.0	5,478.9	5,498.1	5,478.9	13.9	13.6	-91.05	332.4	107.2	89.9	62.8	27.01	3.327		
5,600.0	5,578.9	5,598.1	5,578.9	14.1	13.8	-91.05	332.4	107.2	89.9	62.5	27.40	3.280		
5,700.0	5,678.9	5,698.1	5,678.9	14.3	14.0	-91.05	332.4	107.2	89.9	62.1	27.79	3.233		
5,800.0	5,778.9	5,798.1	5,778.9	14.4	14.2	-91.05	332.4	107.2	89.9	61.7	28.18	3.188		
5,900.0	5,878.9	5,898.1	5,878.9	14.6	14.4	-91.05	332.4	107.2	89.9	61.3	28.58	3.144		
6,000.0	5,978.9	5,998.1	5,978.9	14.8	14.6	-91.05	332.4	107.2	89.9	60.9	28.97	3.101		
6,100.0	6,078.9	6,098.1	6,078.9	15.0	14.8	-91.05	332.4	107.2	89.9	60.5	29.37	3.059		
6,200.0	6,178.9	6,198.1	6,178.9	15.2	15.0	-91.05	332.4	107.2	89.9	60.1	29.77	3.018		
6,300.0	6,278.9	6,298.1	6,278.9	15.4	15.2	-91.05	332.4	107.2	89.9	59.7	30.17	2.978		
6,400.0	6,378.9	6,398.1	6,378.9	15.6	15.4	-91.05	332.4	107.2	89.9	59.3	30.58	2.939		
6,500.0	6,478.9	6,498.1	6,478.9	15.8	15.6	-91.05	332.4	107.2	89.9	58.9	30.98	2.900		
6,600.0	6,578.9	6,598.1	6,578.9	16.0	15.8	-91.05	332.4	107.2	89.9	58.5	31.39	2.863		
6,700.0	6,678.9	6,698.1	6,678.9	16.2	16.0	-91.05	332.4	107.2	89.9	58.1	31.79	2.826		
6,800.0	6,778.9	6,798.1	6,778.9	16.4	16.2	-91.05	332.4	107.2	89.9	57.7	32.20	2.790		
6,900.0	6,878.9	6,898.1	6,878.9	16.6	16.4	-91.05	332.4	107.2	89.9	57.2	32.61	2.756		
6,948.2	6,927.1	6,946.2	6,927.1	16.7	16.5	94.61	332.4	107.2	89.9	57.3	32.64	2.754		
7,000.0	6,978.9	6,998.0	6,978.9	16.8	16.6	94.69	332.4	107.2	89.9	57.1	32.85	2.737		
7,100.0	7,078.2	7,097.4	7,078.2	16.9	16.8	101.40	332.4	107.2	91.5	58.1	33.36	2.742		
7,200.0	7,175.0	7,195.4	7,176.2	17.0	17.0	114.60	332.1	107.2	99.3	65.7	33.59	2.956		
7,300.0	7,267.4	7,299.5	7,279.8	16.9	17.1	127.39	321.7	108.2	114.6	81.8	32.79	3.493		
7,400.0	7,353.7	7,408.6	7,385.4	16.9	17.2	136.78	294.8	110.7	133.6	102.5	31.04	4.303		
7,500.0	7,432.1	7,523.1	7,490.5	16.9	17.2	143.49	249.9	114.9	153.9	125.3	28.64	5.374		
7,600.0	7,501.1	7,643.3	7,591.5	16.8	17.1	148.27	185.4	120.9	173.7	147.9	25.87	6.715		
7,700.0	7,559.3	7,769.2	7,684.3	16.8	17.1	151.66	100.8	128.8	191.7	168.6	23.04	8.319		
7,800.0	7,605.7	7,900.5	7,763.5	17.1	17.2	153.99	-3.1	138.4	206.5	186.0	20.51	10.071		
7,900.0	7,639.4	8,036.2	7,824.1	17.7	17.7	155.49	-123.9	149.7	217.4	198.6	18.77	11.584		
8,000.0	7,659.6	8,175.1	7,861.2	18.5	18.6	156.27	-256.9	162.1	223.6	205.2	18.33	12.197		
8,100.0	7,666.0	8,310.7	7,871.1	19.3	19.7	156.31	-390.3	174.6	223.9	204.5	19.46	11.507		
8,200.0	7,666.6	8,410.7	7,871.7	20.4	20.7	156.31	-489.8	183.9	224.0	203.2	20.78	10.780		
8,300.0	7,667.2	8,510.7	7,872.3	21.5	21.9	156.32	-589.4	193.2	224.0	201.8	22.21	10.087		
8,400.0	7,667.7	8,610.7	7,872.9	22.8	23.1	156.33	-689.0	202.5	224.1	200.3	23.74	9.439		
8,500.0	7,668.3	8,710.7	7,873.5	24.2	24.5	156.34	-788.5	211.8	224.1	198.8	25.34	8.843		
8,600.0	7,668.9	8,810.7	7,874.2	25.6	25.9	156.35	-888.1	221.1	224.1	197.1	27.01	8.298		
8,700.0	7,669.4	8,910.7	7,874.8	27.1	27.4	156.35	-987.6	230.4	224.2	195.4	28.73	7.802		
8,800.0	7,670.0	9,010.7	7,875.4	28.7	29.0	156.36	-1,087.2	239.7	224.2	193.7	30.50	7.352		
8,900.0	7,670.5	9,110.7	7,876.0	30.3	30.6	156.37	-1,186.8	249.0	224.3	192.0	32.30	6.943		
9,000.0	7,671.1	9,210.7	7,876.6	31.9	32.2	156.38	-1,286.3	258.3	224.3	190.2	34.13	6.572		
9,100.0	7,671.7	9,310.7	7,877.2	33.6	33.9	156.39	-1,385.9	267.6	224.3	188.4	35.99	6.234		
9,200.0	7,672.2	9,410.7	7,877.8	35.3	35.6	156.39	-1,485.5	276.9	224.4	186.5	37.87	5.925		
9,300.0	7,672.8	9,510.7	7,878.5	37.1	37.3	156.40	-1,585.0	286.2	224.4	184.7	39.77	5.644		
9,400.0	7,673.4	9,610.7	7,879.1	38.8	39.1	156.41	-1,684.6	295.5	224.5	182.8	41.68	5.386		
9,500.0	7,673.9	9,710.7	7,879.7	40.6	40.8	156.42	-1,784.2	304.8	224.5	180.9	43.61	5.149		
9,600.0	7,674.5	9,810.7	7,880.3	42.4	42.6	156.43	-1,883.7	314.1	224.6	179.0	45.55	4.930		
9,700.0	7,675.1	9,910.7	7,880.9	44.2	44.4	156.43	-1,983.3	323.4	224.6	177.1	47.50	4.729		
9,800.0	7,675.6	10,010.7	7,881.5	46.0	46.3	156.44	-2,082.9	332.7	224.6	175.2	49.45	4.542		
9,900.0	7,676.2	10,110.7	7,882.1	47.9	48.1	156.45	-2,182.4	342.0	224.7	173.3	51.42	4.369		
10,000.0	7,676.7	10,210.7	7,882.8	49.7	49.9	156.46	-2,282.0	351.3	224.7	171.3	53.40	4.209		
10,100.0	7,677.3	10,310.7	7,883.4	51.6	51.8	156.47	-2,381.6	360.6	224.8	169.4	55.37	4.059		
10,200.0	7,677.9	10,410.7	7,884.0	53.4	53.7	156.47	-2,481.1	369.9	224.8	167.4	57.36	3.919		

CC - Min centre to center distance or convergent point, SF - min separation factor, ES - min ellipse separation

<b>Company:</b>	Clear Creek Resource Partners	<b>Local Co-ordinate Reference:</b>	Well Salt Ranch Fee 201-1015H
<b>Project:</b>	SEC.10-T11N-R64W	<b>TVD Reference:</b>	WELL @ 5456.0ft (Original Well Elev)
<b>Reference Site:</b>	Salt Ranch East 10 Pad Sec.10-T11N-R64W	<b>MD Reference:</b>	WELL @ 5456.0ft (Original Well Elev)
<b>Site Error:</b>	0.0 ft	<b>North Reference:</b>	True
<b>Reference Well:</b>	Salt Ranch Fee 201-1015H	<b>Survey Calculation Method:</b>	Minimum Curvature
<b>Well Error:</b>	0.0 ft	<b>Output errors are at</b>	2.00 sigma
<b>Reference Wellbore</b>	Wellbore #1	<b>Database:</b>	US_EDM
<b>Reference Design:</b>	Plan #2 (10-11-17)	<b>Offset TVD Reference:</b>	Offset Datum

Offset Design													Offset Site Error:	0.0 ft
Survey Program: 0-MWD													Offset Well Error:	0.0 ft
Reference		Offset		Semi Major Axis			Distance							Warning
Measured Depth (ft)	Vertical Depth (ft)	Measured Depth (ft)	Vertical Depth (ft)	Reference (ft)	Offset (ft)	Highside Toolface (°)	Offset Wellbore Centre +N/-S (ft)	+E/-W (ft)	Between Centres (ft)	Between Ellipses (ft)	Minimum Separation (ft)	Separation Factor		
10,300.0	7,678.4	10,510.7	7,884.6	55.3	55.5	156.48	-2,580.7	379.2	224.8	165.5	59.35	3.788		
10,400.0	7,679.0	10,610.7	7,885.2	57.2	57.4	156.49	-2,680.2	388.5	224.9	163.5	61.34	3.666		
10,500.0	7,679.6	10,710.7	7,885.8	59.1	59.3	156.50	-2,779.8	397.8	224.9	161.6	63.34	3.551		
10,600.0	7,680.1	10,810.7	7,886.4	61.0	61.2	156.51	-2,879.4	407.1	225.0	159.6	65.34	3.443		
10,700.0	7,680.7	10,910.7	7,887.0	62.9	63.1	156.51	-2,978.9	416.4	225.0	157.7	67.35	3.341		
10,800.0	7,681.2	11,010.7	7,887.7	64.8	65.0	156.52	-3,078.5	425.7	225.1	155.7	69.36	3.245		
10,900.0	7,681.8	11,110.7	7,888.3	66.7	66.9	156.53	-3,178.1	435.0	225.1	153.7	71.37	3.154		
11,000.0	7,682.4	11,210.7	7,888.9	68.6	68.8	156.54	-3,277.6	444.3	225.1	151.8	73.38	3.068		
11,100.0	7,682.9	11,310.7	7,889.5	70.5	70.7	156.55	-3,377.2	453.6	225.2	149.8	75.39	2.987		
11,200.0	7,683.5	11,410.7	7,890.1	72.4	72.6	156.55	-3,476.8	462.9	225.2	147.8	77.41	2.909		
11,300.0	7,684.1	11,510.7	7,890.7	74.3	74.5	156.56	-3,576.3	472.2	225.3	145.8	79.43	2.836		
11,400.0	7,684.6	11,610.7	7,891.3	76.2	76.4	156.57	-3,675.9	481.5	225.3	143.9	81.45	2.766		
11,500.0	7,685.2	11,710.7	7,892.0	78.2	78.4	156.58	-3,775.5	490.8	225.3	141.9	83.47	2.700		
11,600.0	7,685.7	11,810.7	7,892.6	80.1	80.3	156.59	-3,875.0	500.1	225.4	139.9	85.49	2.637		
11,700.0	7,686.3	11,910.7	7,893.2	82.0	82.2	156.59	-3,974.6	509.4	225.4	137.9	87.51	2.576		
11,800.0	7,686.9	12,010.7	7,893.8	84.0	84.1	156.60	-4,074.1	518.7	225.5	135.9	89.53	2.518		
11,900.0	7,687.4	12,110.7	7,894.4	85.9	86.1	156.61	-4,173.7	528.0	225.5	134.0	91.56	2.463		
12,000.0	7,688.0	12,210.7	7,895.0	87.8	88.0	156.62	-4,273.3	537.3	225.6	132.0	93.58	2.410		
12,100.0	7,688.6	12,310.7	7,895.6	89.8	89.9	156.63	-4,372.8	546.6	225.6	130.0	95.61	2.360		
12,200.0	7,689.1	12,410.7	7,896.3	91.7	91.9	156.63	-4,472.4	555.9	225.6	128.0	97.63	2.311		
12,300.0	7,689.7	12,510.7	7,896.9	93.6	93.8	156.64	-4,572.0	565.2	225.7	126.0	99.66	2.265		
12,400.0	7,690.3	12,610.7	7,897.5	95.6	95.7	156.65	-4,671.5	574.5	225.7	124.0	101.68	2.220		
12,500.0	7,690.8	12,710.7	7,898.1	97.5	97.7	156.66	-4,771.1	583.8	225.8	122.1	103.71	2.177		
12,600.0	7,691.4	12,810.7	7,898.7	99.5	99.6	156.66	-4,870.7	593.1	225.8	120.1	105.74	2.136		
12,700.0	7,691.9	12,910.7	7,899.3	101.4	101.6	156.67	-4,970.2	602.4	225.8	118.1	107.77	2.096		
12,800.0	7,692.5	13,010.7	7,899.9	103.3	103.5	156.68	-5,069.8	611.7	225.9	116.1	109.79	2.057		
12,900.0	7,693.1	13,107.9	7,900.5	105.2	105.3	156.51	-5,166.7	619.4	226.2	114.2	112.08	2.019		
13,000.0	7,693.6	13,204.8	7,901.1	106.8	106.9	155.95	-5,263.5	623.9	227.3	112.2	115.09	1.975		
13,100.0	7,694.2	13,301.5	7,901.7	108.5	108.5	155.04	-5,360.2	625.0	229.0	110.1	118.93	1.925		
13,200.0	7,694.8	13,400.6	7,902.3	110.2	110.2	153.98	-5,459.3	623.8	231.1	107.8	123.24	1.875		
13,300.0	7,695.3	13,500.6	7,903.0	111.9	112.0	153.28	-5,559.2	622.5	232.5	105.7	126.77	1.834		
13,400.0	7,695.9	13,600.6	7,903.6	113.5	113.9	152.99	-5,659.2	621.1	233.1	103.7	129.38	1.802		
13,500.0	7,696.5	13,700.6	7,904.2	115.2	115.8	153.03	-5,759.2	619.8	233.1	101.8	131.29	1.775		
13,600.0	7,697.0	13,800.6	7,904.8	117.1	117.7	153.11	-5,859.2	618.5	233.0	99.7	133.24	1.749		
13,700.0	7,697.6	13,900.6	7,905.4	119.0	119.6	153.20	-5,959.2	617.1	232.9	97.7	135.18	1.723		
13,800.0	7,698.2	14,000.6	7,906.0	120.9	121.4	153.28	-6,059.2	615.8	232.7	95.6	137.12	1.697		
13,900.0	7,698.7	14,100.6	7,906.7	122.7	123.3	153.37	-6,159.1	614.5	232.6	93.6	139.04	1.673		
14,000.0	7,699.3	14,200.6	7,907.3	124.6	125.2	153.45	-6,259.1	613.1	232.5	91.5	140.97	1.649		
14,100.0	7,699.9	14,300.6	7,907.9	126.5	127.1	153.54	-6,359.1	611.8	232.4	89.5	142.88	1.627		
14,200.0	7,700.4	14,400.6	7,908.5	128.4	129.0	153.62	-6,459.1	610.5	232.3	87.5	144.79	1.604		
14,300.0	7,701.0	14,500.6	7,909.1	130.3	130.9	153.71	-6,559.1	609.1	232.2	85.5	146.70	1.583		
14,400.0	7,701.5	14,600.6	7,909.7	132.2	132.8	153.79	-6,659.1	607.8	232.1	83.5	148.60	1.562		
14,500.0	7,702.1	14,700.6	7,910.4	134.0	134.7	153.88	-6,759.1	606.5	231.9	81.5	150.49	1.541		
14,600.0	7,702.7	14,800.6	7,911.0	135.9	136.6	153.96	-6,859.1	605.1	231.8	79.5	152.37	1.522		
14,700.0	7,703.2	14,900.6	7,911.6	137.8	138.4	154.05	-6,959.1	603.8	231.7	77.5	154.25	1.502		
14,800.0	7,703.8	15,000.6	7,912.2	139.7	140.3	154.13	-7,059.0	602.5	231.6	75.5	156.12	1.484 Level 3		
14,900.0	7,704.4	15,100.6	7,912.8	141.6	142.2	154.22	-7,159.0	601.1	231.5	73.5	157.99	1.465 Level 3		
15,000.0	7,704.9	15,200.6	7,913.5	143.5	144.1	154.31	-7,259.0	599.8	231.4	71.5	159.85	1.448 Level 3		
15,100.0	7,705.5	15,300.6	7,914.1	145.4	146.0	154.39	-7,359.0	598.5	231.3	69.5	161.70	1.430 Level 3		
15,200.0	7,706.1	15,400.6	7,914.7	147.3	147.9	154.48	-7,459.0	597.1	231.2	67.6	163.55	1.413 Level 3		
15,300.0	7,706.6	15,500.6	7,915.3	149.2	149.8	154.56	-7,559.0	595.8	231.1	65.7	165.39	1.397 Level 3		
15,400.0	7,707.2	15,600.6	7,915.9	151.1	151.7	154.65	-7,659.0	594.5	231.0	63.7	167.22	1.381 Level 3		

CC - Min centre to center distance or convergent point, SF - min separation factor, ES - min ellipse separation

<b>Company:</b>	Clear Creek Resource Partners	<b>Local Co-ordinate Reference:</b>	Well Salt Ranch Fee 201-1015H
<b>Project:</b>	SEC.10-T11N-R64W	<b>TVD Reference:</b>	WELL @ 5456.0ft (Original Well Elev)
<b>Reference Site:</b>	Salt Ranch East 10 Pad Sec.10-T11N-R64W	<b>MD Reference:</b>	WELL @ 5456.0ft (Original Well Elev)
<b>Site Error:</b>	0.0 ft	<b>North Reference:</b>	True
<b>Reference Well:</b>	Salt Ranch Fee 201-1015H	<b>Survey Calculation Method:</b>	Minimum Curvature
<b>Well Error:</b>	0.0 ft	<b>Output errors are at</b>	2.00 sigma
<b>Reference Wellbore</b>	Wellbore #1	<b>Database:</b>	US_EDM
<b>Reference Design:</b>	Plan #2 (10-11-17)	<b>Offset TVD Reference:</b>	Offset Datum

Offset Design		Salt Ranch East 10 Pad Sec.10-T11N-R64W - Salt Ranch Fee 501-1015H - Wellbore #1 - Plan #2 (10-1)										Offset Site Error:		0.0 ft
Survey Program:		0-MWD										Offset Well Error:		0.0 ft
Reference		Offset		Semi Major Axis			Distance							Warning
Measured Depth (ft)	Vertical Depth (ft)	Measured Depth (ft)	Vertical Depth (ft)	Reference (ft)	Offset (ft)	Highside Toolface (°)	Offset Wellbore Centre +N/-S (ft)	+E/-W (ft)	Between Centres (ft)	Between Ellipses (ft)	Minimum Separation (ft)	Separation Factor		
15,500.0	7,707.8	15,700.6	7,916.5	153.0	153.6	154.74	-7,759.0	593.1	230.9	61.8	169.05	1.366 Level 3		
15,600.0	7,708.3	15,800.5	7,917.2	154.9	155.5	154.82	-7,858.9	591.8	230.7	59.9	170.87	1.350 Level 3		
15,700.0	7,708.9	15,900.5	7,917.8	156.7	157.4	154.91	-7,958.9	590.5	230.6	58.0	172.69	1.336 Level 3		
15,800.0	7,709.5	16,000.5	7,918.4	158.6	159.3	155.00	-8,058.9	589.1	230.5	56.0	174.49	1.321 Level 3		
15,900.0	7,710.0	16,100.5	7,919.0	160.5	161.2	155.08	-8,158.9	587.8	230.4	54.1	176.30	1.307 Level 3		
16,000.0	7,710.6	16,200.5	7,919.6	162.4	163.1	155.17	-8,258.9	586.5	230.3	52.2	178.09	1.293 Level 3		
16,100.0	7,711.2	16,300.5	7,920.2	164.3	165.0	155.26	-8,358.9	585.1	230.2	50.3	179.88	1.280 Level 3		
16,200.0	7,711.7	16,400.5	7,920.9	166.2	166.9	155.34	-8,458.9	583.8	230.1	48.5	181.66	1.267 Level 3		
16,300.0	7,712.3	16,500.5	7,921.5	168.1	168.8	155.43	-8,558.9	582.5	230.0	46.6	183.43	1.254 Level 3		
16,400.0	7,712.9	16,600.5	7,922.1	170.0	170.7	155.52	-8,658.9	581.1	229.9	44.7	185.20	1.241 Level 2		
16,500.0	7,713.4	16,700.5	7,922.7	171.9	172.6	155.60	-8,758.8	579.8	229.8	42.8	186.96	1.229 Level 2		
16,600.0	7,714.0	16,800.5	7,923.3	173.8	174.6	155.69	-8,858.8	578.5	229.7	41.0	188.72	1.217 Level 2		
16,700.0	7,714.6	16,900.5	7,923.9	175.7	176.5	155.78	-8,958.8	577.1	229.6	39.1	190.47	1.206 Level 2		
16,800.0	7,715.1	17,000.5	7,924.6	177.7	178.4	155.87	-9,058.8	575.8	229.5	37.3	192.21	1.194 Level 2		
16,900.0	7,715.7	17,100.5	7,925.2	179.6	180.3	155.95	-9,158.8	574.5	229.4	35.5	193.94	1.183 Level 2		
17,000.0	7,716.2	17,200.5	7,925.8	181.5	182.2	156.04	-9,258.8	573.1	229.3	33.6	195.67	1.172 Level 2		
17,100.0	7,716.8	17,300.5	7,926.4	183.4	184.1	156.13	-9,358.8	571.8	229.2	31.8	197.39	1.161 Level 2		
17,200.0	7,717.4	17,400.5	7,927.0	185.3	186.0	156.22	-9,458.8	570.5	229.1	30.0	199.11	1.151 Level 2		
17,300.0	7,717.9	17,500.5	7,927.6	187.2	187.9	156.30	-9,558.8	569.1	229.0	28.2	200.82	1.140 Level 2		
17,400.0	7,718.5	17,600.5	7,928.3	189.1	189.8	156.39	-9,658.7	567.8	228.9	26.4	202.52	1.130 Level 2		
17,500.0	7,719.1	17,700.5	7,928.9	191.0	191.7	156.48	-9,758.7	566.5	228.8	24.6	204.21	1.121 Level 2		
17,600.0	7,719.6	17,800.5	7,929.5	192.9	193.6	156.57	-9,858.7	565.1	228.7	22.8	205.90	1.111 Level 2		
17,700.0	7,720.2	17,900.5	7,930.1	194.8	195.5	156.65	-9,958.7	563.8	228.6	21.0	207.58	1.101 Level 2		
17,800.0	7,720.8	18,000.5	7,930.7	196.7	197.5	156.74	-10,058.7	562.5	228.5	19.3	209.26	1.092 Level 2		
17,840.3	7,721.0	18,040.8	7,931.0	197.5	198.2	156.78	-10,098.9	561.9	228.5	18.6	209.93	1.088 Level 2, ES, SF		

<b>Company:</b>	Clear Creek Resource Partners	<b>Local Co-ordinate Reference:</b>	Well Salt Ranch Fee 201-1015H
<b>Project:</b>	SEC.10-T11N-R64W	<b>TVD Reference:</b>	WELL @ 5456.0ft (Original Well Elev)
<b>Reference Site:</b>	Salt Ranch East 10 Pad Sec.10-T11N-R64W	<b>MD Reference:</b>	WELL @ 5456.0ft (Original Well Elev)
<b>Site Error:</b>	0.0 ft	<b>North Reference:</b>	True
<b>Reference Well:</b>	Salt Ranch Fee 201-1015H	<b>Survey Calculation Method:</b>	Minimum Curvature
<b>Well Error:</b>	0.0 ft	<b>Output errors are at</b>	2.00 sigma
<b>Reference Wellbore</b>	Wellbore #1	<b>Database:</b>	US_EDM
<b>Reference Design:</b>	Plan #2 (10-11-17)	<b>Offset TVD Reference:</b>	Offset Datum

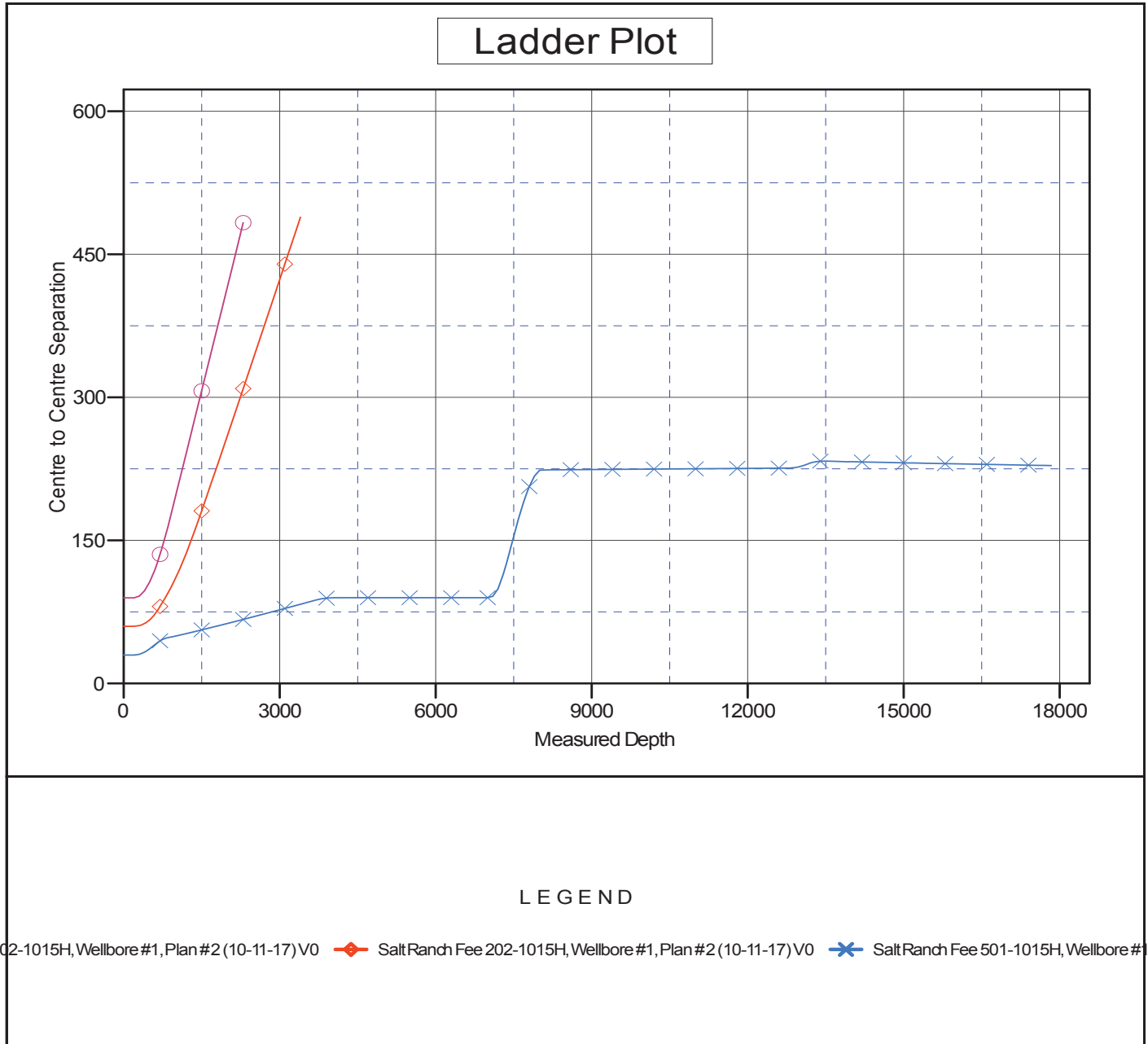
Offset Design													Offset Site Error:	0.0 ft
Survey Program: 0-MWD													Offset Well Error:	0.0 ft
Reference		Offset		Semi Major Axis			Distance							Warning
Measured Depth (ft)	Vertical Depth (ft)	Measured Depth (ft)	Vertical Depth (ft)	Reference (ft)	Offset (ft)	Highside Toolface (°)	Offset Wellbore Centre +N/-S (ft)	+E/-W (ft)	Between Centres (ft)	Between Ellipses (ft)	Minimum Separation (ft)	Separation Factor		
0.0	0.0	0.0	0.0	0.0	0.0	-89.30	1.1	-89.8	89.8					
100.0	100.0	100.0	100.0	0.1	0.1	-89.30	1.1	-89.8	89.8	89.6	0.22	399.509		
200.0	200.0	200.0	200.0	0.3	0.3	-89.30	1.1	-89.8	89.8	89.1	0.67	133.170	CC, ES	
300.0	300.0	297.9	297.9	0.6	0.6	-120.19	1.6	-90.9	91.6	90.5	1.12	82.090		
400.0	399.9	395.5	395.4	0.8	0.8	-121.14	3.2	-94.3	97.1	95.5	1.57	61.897		
500.0	499.7	492.8	492.5	1.0	1.0	-122.51	5.9	-99.9	106.3	104.2	2.04	52.169		
600.0	599.3	589.4	588.7	1.3	1.3	-124.06	9.5	-107.7	119.1	116.6	2.52	47.213		
700.0	698.6	685.2	683.9	1.6	1.5	-125.52	14.2	-117.6	135.4	132.4	3.02	44.824		
800.0	798.0	780.4	778.1	1.8	1.8	-126.27	19.8	-129.6	153.9	150.4	3.53	43.620		
900.0	897.4	874.8	871.3	2.1	2.2	-126.45	26.3	-143.6	174.5	170.5	4.05	43.089		
1,000.0	996.7	971.6	966.5	2.4	2.5	-126.33	33.7	-159.4	196.5	192.0	4.59	42.841		
1,100.0	1,096.1	1,069.1	1,062.4	2.7	2.9	-126.24	41.2	-175.3	218.6	213.5	5.13	42.631		
1,200.0	1,195.5	1,166.6	1,158.3	3.0	3.3	-126.15	48.7	-191.3	240.7	235.0	5.67	42.416		
1,300.0	1,294.8	1,264.2	1,254.3	3.3	3.7	-126.09	56.2	-207.3	262.7	256.5	6.22	42.203		
1,400.0	1,394.2	1,361.7	1,350.2	3.6	4.1	-126.03	63.7	-223.2	284.8	278.0	6.78	42.008		
1,500.0	1,493.6	1,459.2	1,446.1	3.9	4.4	-125.98	71.2	-239.2	306.8	299.5	7.34	41.827		
1,600.0	1,592.9	1,556.8	1,542.1	4.2	4.8	-125.94	78.7	-255.1	328.9	321.0	7.89	41.660		
1,700.0	1,692.3	1,654.3	1,638.0	4.5	5.2	-125.90	86.1	-271.1	350.9	342.5	8.45	41.508		
1,800.0	1,791.7	1,751.9	1,733.9	4.8	5.6	-125.87	93.6	-287.0	373.0	364.0	9.02	41.368		
1,900.0	1,891.0	1,849.4	1,829.9	5.1	6.0	-125.84	101.1	-303.0	395.0	385.4	9.58	41.240		
2,000.0	1,990.4	1,946.9	1,925.8	5.4	6.4	-125.82	108.6	-318.9	417.1	406.9	10.14	41.123		
2,100.0	2,089.7	2,044.5	2,021.7	5.7	6.8	-125.79	116.1	-334.9	439.1	428.4	10.71	41.015		
2,200.0	2,189.1	2,142.0	2,117.7	6.0	7.2	-125.77	123.6	-350.8	461.2	449.9	11.27	40.915		
2,300.0	2,288.5	2,239.5	2,213.6	6.4	7.6	-125.75	131.0	-366.8	483.2	471.4	11.84	40.824	SF	



<b>Company:</b>	Clear Creek Resource Partners	<b>Local Co-ordinate Reference:</b>	Well Salt Ranch Fee 201-1015H
<b>Project:</b>	SEC.10-T11N-R64W	<b>TVD Reference:</b>	WELL @ 5456.0ft (Original Well Elev)
<b>Reference Site:</b>	Salt Ranch East 10 Pad Sec.10-T11N-R64W	<b>MD Reference:</b>	WELL @ 5456.0ft (Original Well Elev)
<b>Site Error:</b>	0.0 ft	<b>North Reference:</b>	True
<b>Reference Well:</b>	Salt Ranch Fee 201-1015H	<b>Survey Calculation Method:</b>	Minimum Curvature
<b>Well Error:</b>	0.0 ft	<b>Output errors are at</b>	2.00 sigma
<b>Reference Wellbore</b>	Wellbore #1	<b>Database:</b>	US_EDM
<b>Reference Design:</b>	Plan #2 (10-11-17)	<b>Offset TVD Reference:</b>	Offset Datum

Reference Depths are relative to WELL @ 5456.0ft (Original Well Elev)  
Offset Depths are relative to Offset Datum  
Central Meridian is -105.500000

Coordinates are relative to: Salt Ranch Fee 201-1015H  
Coordinate System is US State Plane 1983, Colorado Northern Zone  
Grid Convergence at Surface is: 0.63°



<b>Company:</b>	Clear Creek Resource Partners	<b>Local Co-ordinate Reference:</b>	Well Salt Ranch Fee 201-1015H
<b>Project:</b>	SEC.10-T11N-R64W	<b>TVD Reference:</b>	WELL @ 5456.0ft (Original Well Elev)
<b>Reference Site:</b>	Salt Ranch East 10 Pad Sec.10-T11N-R64W	<b>MD Reference:</b>	WELL @ 5456.0ft (Original Well Elev)
<b>Site Error:</b>	0.0 ft	<b>North Reference:</b>	True
<b>Reference Well:</b>	Salt Ranch Fee 201-1015H	<b>Survey Calculation Method:</b>	Minimum Curvature
<b>Well Error:</b>	0.0 ft	<b>Output errors are at</b>	2.00 sigma
<b>Reference Wellbore</b>	Wellbore #1	<b>Database:</b>	US_EDM
<b>Reference Design:</b>	Plan #2 (10-11-17)	<b>Offset TVD Reference:</b>	Offset Datum

Reference Depths are relative to WELL @ 5456.0ft (Original Well Elev)  
Offset Depths are relative to Offset Datum  
Central Meridian is -105.500000

Coordinates are relative to: Salt Ranch Fee 201-1015H  
Coordinate System is US State Plane 1983, Colorado Northern Zone  
Grid Convergence at Surface is: 0.63°

