

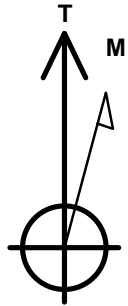
# Clear Creek Resource Partners

Well Name: **Salt Ranch Fee 202-1015H**

Surface Location: Salt Ranch East 10 Pad Sec.10-T11N-R64W  
 North American Datum 1983 , US State Plane 1983, Colorado Northern Zone  
 Ground Elevation: 5433.0  
 +N/-S+E/-W Northing Easting Longitude Slot  
 0.0 0.0 1587572.08 3269119.95 40.942192 -104.525906  
 Original Well Elev WELL @ 5456.0ft (Original Well Elev)

## WELLBORE TARGET DETAILS

Name	TVD	+N/-S	+E/-W	Shape
SHL 357'FNL & 637'FEL, Sec.10	1.0	0.0	0.0	Point
LPL 735'FNL & 1011'FEL, Sec.10	7675.0	-380.0	-339.3	Point
WP (202-1015H)	7699.2	-5079.3	106.1	Point
BHL 300'FSL & 1021'FEL, Sec.15	7725.0	-10104.4	40.4	Point



Azimuths to True North  
 Magnetic North: 8.55°

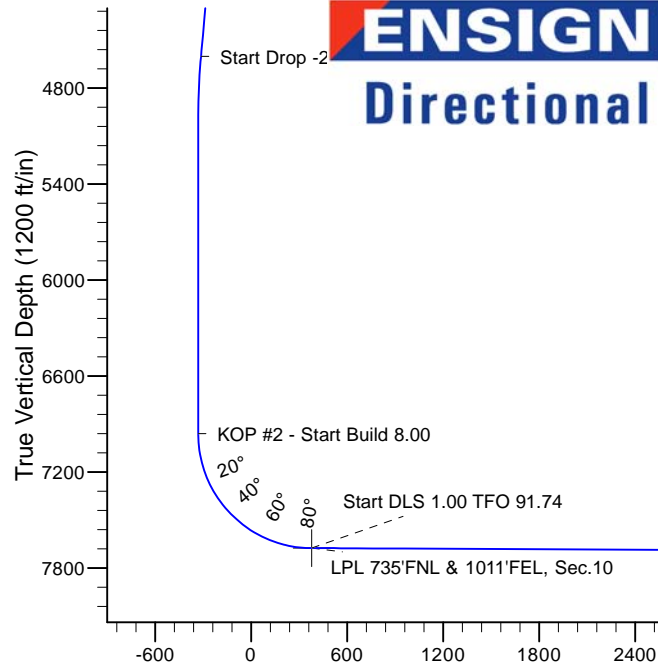
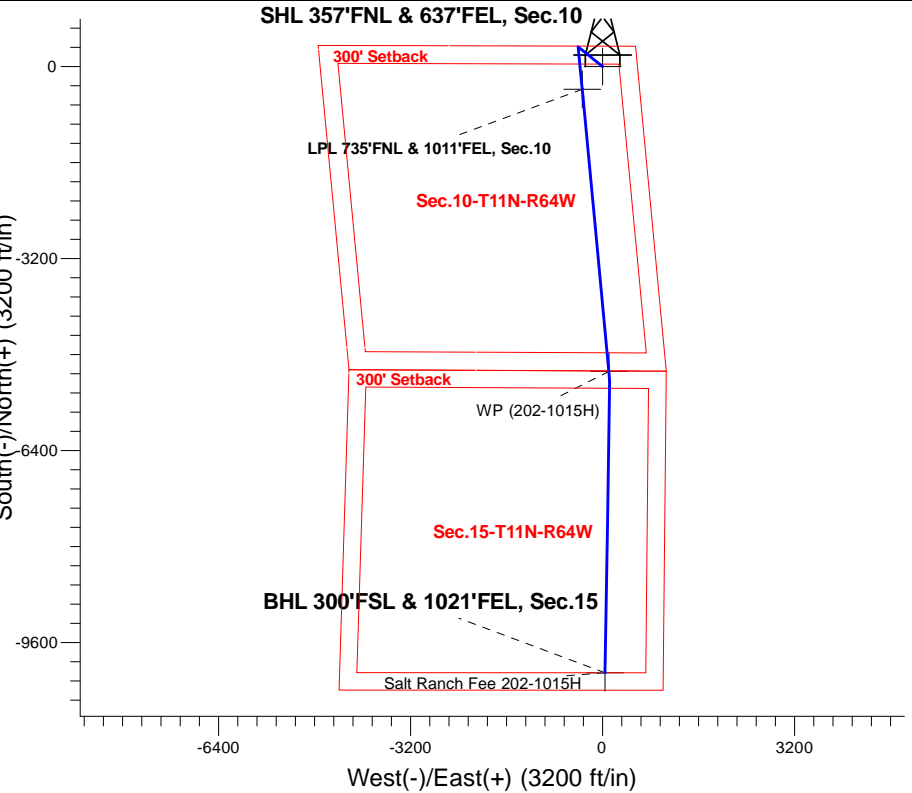
Magnetic Field  
 Strength: 52814.1snT  
 Dip Angle: 67.28°  
 Date: 9/8/2017  
 Model: HDGM

**Salt Ranch East 10 Pad Sec.10-T11N-R64W**  
**Salt Ranch Fee 202-1015H**  
**Plan #2 (10-11-17)**  
**12:01, October 11 2017**

## ANNOTATIONS

TVD	MD	Annotation
800.0	800.0	KOP - Start Build 1.50
4601.7	4635.5	Start Drop -2.00
6960.1	6995.2	KOP #2 - Start Build 8.00
7675.0	8117.1	Start DLS 1.00 TFO 91.74
7699.2	12837.6	Start DLS 2.00 TFO 90.02
7725.0	17863.7	TD at 17863.7

South(-)/North(+) (3200 ft/in)



## SECTION DETAILS

Sec	MD	Inc	Azi	TVD	+N/-S	+E/-W	Dleg	TFace	VSect	Target
1	0.0	0.00	0.00	0.0	0.0	0.0	0.00	0.00	0.0	
2	800.0	0.00	0.00	800.0	0.0	0.0	0.00	0.00	0.0	
3	1332.8	7.99	308.88	1331.1	23.3	-28.9	1.50	308.88	-23.4	
4	4635.5	7.99	308.88	4601.7	311.5	-386.3	0.00	0.00	-313.1	
5	5035.1	0.00	0.00	5000.0	329.0	-408.0	2.00	180.00	-330.6	
6	6995.2	0.00	0.00	6960.1	329.0	-408.0	0.00	0.00	-330.6	
7	8116.1	89.71	174.46	7675.0	-379.0	-339.4	8.00	174.46	377.6	
8	8117.1	89.71	174.46	7675.0	-380.0	-339.3	0.00	0.00	378.6	LPL 735'FNL & 1011'FEL, Sec.10
9	8129.4	89.71	174.59	7675.1	-392.2	-338.1	1.00	91.74	390.9	
10	12837.6	89.71	174.59	7699.2	-5079.3	106.1	0.00	0.00	5079.7	WP (202-1015H)
11	13155.8	89.71	180.95	7700.8	-5397.2	118.5	2.00	90.02	5397.6	
12	17863.7	89.71	180.95	7725.0	-10104.4	40.4	0.00	0.00	10104.4	BHL 300'FSL & 1021'FEL, Sec.15

**BHL 300'FSL & 1021'FEL, Sec.15**

Vertical Section at 179.77° (1200 ft/in)



## **Clear Creek Resource Partners**

**SEC.10-T11N-R64W**

**Salt Ranch East 10 Pad Sec.10-T11N-R64W**

**Salt Ranch Fee 202-1015H**

**Wellbore #1**

**Plan: Plan #2 (10-11-17)**

## **Standard Planning Report**

**11 October, 2017**

<b>Database:</b>	US_EDM	<b>Local Co-ordinate Reference:</b>	Well Salt Ranch Fee 202-1015H
<b>Company:</b>	Clear Creek Resource Partners	<b>TVD Reference:</b>	WELL @ 5456.0ft (Original Well Elev)
<b>Project:</b>	SEC.10-T11N-R64W	<b>MD Reference:</b>	WELL @ 5456.0ft (Original Well Elev)
<b>Site:</b>	Salt Ranch East 10 Pad Sec.10-T11N-R64W	<b>North Reference:</b>	True
<b>Well:</b>	Salt Ranch Fee 202-1015H	<b>Survey Calculation Method:</b>	Minimum Curvature
<b>Wellbore:</b>	Wellbore #1		
<b>Design:</b>	Plan #2 (10-11-17)		

<b>Project</b>	SEC.10-T11N-R64W, Weld County, CO		
<b>Map System:</b>	US State Plane 1983	<b>System Datum:</b>	Mean Sea Level
<b>Geo Datum:</b>	North American Datum 1983		Using Well Reference Point
<b>Map Zone:</b>	Colorado Northern Zone		Using geodetic scale factor

Site	Salt Ranch East 10 Pad Sec.10-T11N-R64W				
Site Position:		Northing:	1,587,572.01 usft	Latitude:	40.942190
From:	Lat/Long	Easting:	3,269,179.91 usft	Longitude:	-104.525689
Position Uncertainty:	0.0 ft	Slot Radius:	13-3/16 "	Grid Convergence:	0.63

Well	Salt Ranch Fee 202-1015H					
Well Position	+N/-S	0.7 ft	Northing:	1,587,572.07 usft	Latitude:	40.942192
	+E/-W	-60.0 ft	Easting:	3,269,119.95 usft	Longitude:	-104.525906
Position Uncertainty		0.0 ft	Wellhead Elevation:	0.0 ft	Ground Level:	5,433.0 ft

<b>Wellbore</b>	Wellbore #1				
<b>Magnetics</b>	<b>Model Name</b>	<b>Sample Date</b>	<b>Declination (°)</b>	<b>Dip Angle (°)</b>	<b>Field Strength (nT)</b>
	HDGM	9/8/2017	8.55	67.28	52,814

<b>Design</b>	Plan #2 (10-11-17)			
<b>Audit Notes:</b>				
<b>Version:</b>	<b>Phase:</b>	PROTOTYPE	<b>Tie On Depth:</b>	0.0
<b>Vertical Section:</b>	<b>Depth From (TVD) (ft)</b>	<b>+N/-S (ft)</b>	<b>+E/-W (ft)</b>	<b>Direction (°)</b>
	0.0	0.0	0.0	179.77

<b>Plan Sections</b>										
Measured Depth (ft)	Inclination (°)	Azimuth (°)	Vertical Depth (ft)	+N/-S (ft)	+E/-W (ft)	Dogleg Rate (°/100usft)	Build Rate (°/100usft)	Turn Rate (°/100usft)	TFO (°)	Target
0.0	0.00	0.00	0.0	0.0	0.0	0.00	0.00	0.00	0.00	
800.0	0.00	0.00	800.0	0.0	0.0	0.00	0.00	0.00	0.00	
1,332.8	7.99	308.88	1,331.1	23.3	-28.9	1.50	1.50	0.00	308.88	
4,635.5	7.99	308.88	4,601.7	311.5	-386.3	0.00	0.00	0.00	0.00	
5,035.1	0.00	0.00	5,000.0	329.0	-408.0	2.00	-2.00	0.00	180.00	
6,995.2	0.00	0.00	6,960.1	329.0	-408.0	0.00	0.00	0.00	0.00	
8,116.1	89.71	174.46	7,675.0	-379.0	-339.4	8.00	8.00	0.00	174.46	
8,117.1	89.71	174.46	7,675.0	-380.0	-339.3	0.00	0.00	0.00	0.00	LPL 735'FNL & 1011'F
8,129.4	89.71	174.59	7,675.1	-392.2	-338.1	1.00	-0.03	1.00	91.74	
12,837.6	89.71	174.59	7,699.2	-5,079.3	106.1	0.00	0.00	0.00	0.00	WP (202-1015H)
13,155.8	89.71	180.95	7,700.8	-5,397.2	118.5	2.00	0.00	2.00	90.02	
17,863.7	89.71	180.95	7,725.0	-10,104.4	40.4	0.00	0.00	0.00	0.00	BHL 300'FSL & 1021'I

Database:	US_EDM	Local Co-ordinate Reference:	Well Salt Ranch Fee 202-1015H
Company:	Clear Creek Resource Partners	TVD Reference:	WELL @ 5456.0ft (Original Well Elev)
Project:	SEC.10-T11N-R64W	MD Reference:	WELL @ 5456.0ft (Original Well Elev)
Site:	Salt Ranch East 10 Pad Sec.10-T11N-R64W	North Reference:	True
Well:	Salt Ranch Fee 202-1015H	Survey Calculation Method:	Minimum Curvature
Wellbore:	Wellbore #1		
Design:	Plan #2 (10-11-17)		

Planned Survey									
Measured Depth (ft)	Inclination (°)	Azimuth (°)	Vertical Depth (ft)	+N/-S (ft)	+E/-W (ft)	Vertical Section (ft)	Dogleg Rate (°/100usft)	Build Rate (°/100usft)	Turn Rate (°/100usft)
0.0	0.00	0.00	0.0	0.0	0.0	0.0	0.00	0.00	0.00
1.0	0.00	0.00	1.0	0.0	0.0	0.0	0.00	0.00	0.00
SHL 357'FNL & 637'FEL, Sec.10									
100.0	0.00	0.00	100.0	0.0	0.0	0.0	0.00	0.00	0.00
200.0	0.00	0.00	200.0	0.0	0.0	0.0	0.00	0.00	0.00
300.0	0.00	0.00	300.0	0.0	0.0	0.0	0.00	0.00	0.00
400.0	0.00	0.00	400.0	0.0	0.0	0.0	0.00	0.00	0.00
500.0	0.00	0.00	500.0	0.0	0.0	0.0	0.00	0.00	0.00
600.0	0.00	0.00	600.0	0.0	0.0	0.0	0.00	0.00	0.00
700.0	0.00	0.00	700.0	0.0	0.0	0.0	0.00	0.00	0.00
800.0	0.00	0.00	800.0	0.0	0.0	0.0	0.00	0.00	0.00
KOP - Start Build 1.50									
900.0	1.50	308.88	900.0	0.8	-1.0	-0.8	1.50	1.50	0.00
1,000.0	3.00	308.88	999.9	3.3	-4.1	-3.3	1.50	1.50	0.00
1,100.0	4.50	308.88	1,099.7	7.4	-9.2	-7.4	1.50	1.50	0.00
1,200.0	6.00	308.88	1,199.3	13.1	-16.3	-13.2	1.50	1.50	0.00
1,300.0	7.50	308.88	1,298.6	20.5	-25.4	-20.6	1.50	1.50	0.00
1,332.8	7.99	308.88	1,331.1	23.3	-28.9	-23.4	1.50	1.50	0.00
1,400.0	7.99	308.88	1,397.6	29.2	-36.2	-29.3	0.00	0.00	0.00
1,500.0	7.99	308.88	1,496.6	37.9	-47.0	-38.1	0.00	0.00	0.00
1,600.0	7.99	308.88	1,595.7	46.6	-57.8	-46.8	0.00	0.00	0.00
1,700.0	7.99	308.88	1,694.7	55.3	-68.6	-55.6	0.00	0.00	0.00
1,800.0	7.99	308.88	1,793.7	64.1	-79.4	-64.4	0.00	0.00	0.00
1,900.0	7.99	308.88	1,892.8	72.8	-90.3	-73.2	0.00	0.00	0.00
2,000.0	7.99	308.88	1,991.8	81.5	-101.1	-81.9	0.00	0.00	0.00
2,100.0	7.99	308.88	2,090.8	90.2	-111.9	-90.7	0.00	0.00	0.00
2,200.0	7.99	308.88	2,189.9	99.0	-122.7	-99.5	0.00	0.00	0.00
2,300.0	7.99	308.88	2,288.9	107.7	-133.6	-108.2	0.00	0.00	0.00
2,400.0	7.99	308.88	2,387.9	116.4	-144.4	-117.0	0.00	0.00	0.00
2,500.0	7.99	308.88	2,486.9	125.2	-155.2	-125.8	0.00	0.00	0.00
2,600.0	7.99	308.88	2,586.0	133.9	-166.0	-134.5	0.00	0.00	0.00
2,700.0	7.99	308.88	2,685.0	142.6	-176.9	-143.3	0.00	0.00	0.00
2,800.0	7.99	308.88	2,784.0	151.3	-187.7	-152.1	0.00	0.00	0.00
2,900.0	7.99	308.88	2,883.1	160.1	-198.5	-160.9	0.00	0.00	0.00
3,000.0	7.99	308.88	2,982.1	168.8	-209.3	-169.6	0.00	0.00	0.00
3,100.0	7.99	308.88	3,081.1	177.5	-220.1	-178.4	0.00	0.00	0.00
3,200.0	7.99	308.88	3,180.1	186.2	-231.0	-187.2	0.00	0.00	0.00
3,300.0	7.99	308.88	3,279.2	195.0	-241.8	-195.9	0.00	0.00	0.00
3,400.0	7.99	308.88	3,378.2	203.7	-252.6	-204.7	0.00	0.00	0.00
3,500.0	7.99	308.88	3,477.2	212.4	-263.4	-213.5	0.00	0.00	0.00
3,600.0	7.99	308.88	3,576.3	221.2	-274.3	-222.3	0.00	0.00	0.00
3,700.0	7.99	308.88	3,675.3	229.9	-285.1	-231.0	0.00	0.00	0.00
3,800.0	7.99	308.88	3,774.3	238.6	-295.9	-239.8	0.00	0.00	0.00
3,900.0	7.99	308.88	3,873.3	247.3	-306.7	-248.6	0.00	0.00	0.00
4,000.0	7.99	308.88	3,972.4	256.1	-317.6	-257.3	0.00	0.00	0.00
4,100.0	7.99	308.88	4,071.4	264.8	-328.4	-266.1	0.00	0.00	0.00
4,200.0	7.99	308.88	4,170.4	273.5	-339.2	-274.9	0.00	0.00	0.00
4,300.0	7.99	308.88	4,269.5	282.3	-350.0	-283.6	0.00	0.00	0.00
4,400.0	7.99	308.88	4,368.5	291.0	-360.9	-292.4	0.00	0.00	0.00
4,500.0	7.99	308.88	4,467.5	299.7	-371.7	-301.2	0.00	0.00	0.00
4,600.0	7.99	308.88	4,566.5	308.4	-382.5	-310.0	0.00	0.00	0.00
4,635.5	7.99	308.88	4,601.7	311.5	-386.3	-313.1	0.00	0.00	0.00
Start Drop -2.00									

Database:	US_EDM	Local Co-ordinate Reference:	Well Salt Ranch Fee 202-1015H
Company:	Clear Creek Resource Partners	TVD Reference:	WELL @ 5456.0ft (Original Well Elev)
Project:	SEC.10-T11N-R64W	MD Reference:	WELL @ 5456.0ft (Original Well Elev)
Site:	Salt Ranch East 10 Pad Sec.10-T11N-R64W	North Reference:	True
Well:	Salt Ranch Fee 202-1015H	Survey Calculation Method:	Minimum Curvature
Wellbore:	Wellbore #1		
Design:	Plan #2 (10-11-17)		

Planned Survey									
Measured Depth (ft)	Inclination (°)	Azimuth (°)	Vertical Depth (ft)	+N/-S (ft)	+E/-W (ft)	Vertical Section (ft)	Dogleg Rate (°/100usft)	Build Rate (°/100usft)	Turn Rate (°/100usft)
4,700.0	6.70	308.88	4,665.7	316.7	-392.8	-318.3	2.00	-2.00	0.00
4,800.0	4.70	308.88	4,765.2	322.9	-400.5	-324.5	2.00	-2.00	0.00
4,900.0	2.70	308.88	4,865.0	327.0	-405.5	-328.6	2.00	-2.00	0.00
5,000.0	0.70	308.88	4,964.9	328.9	-407.8	-330.5	2.00	-2.00	0.00
5,035.1	0.00	0.00	5,000.0	329.0	-408.0	-330.6	2.00	-2.00	0.00
5,100.0	0.00	0.00	5,064.9	329.0	-408.0	-330.6	0.00	0.00	0.00
5,200.0	0.00	0.00	5,164.9	329.0	-408.0	-330.6	0.00	0.00	0.00
5,300.0	0.00	0.00	5,264.9	329.0	-408.0	-330.6	0.00	0.00	0.00
5,400.0	0.00	0.00	5,364.9	329.0	-408.0	-330.6	0.00	0.00	0.00
5,500.0	0.00	0.00	5,464.9	329.0	-408.0	-330.6	0.00	0.00	0.00
5,600.0	0.00	0.00	5,564.9	329.0	-408.0	-330.6	0.00	0.00	0.00
5,700.0	0.00	0.00	5,664.9	329.0	-408.0	-330.6	0.00	0.00	0.00
5,800.0	0.00	0.00	5,764.9	329.0	-408.0	-330.6	0.00	0.00	0.00
5,900.0	0.00	0.00	5,864.9	329.0	-408.0	-330.6	0.00	0.00	0.00
6,000.0	0.00	0.00	5,964.9	329.0	-408.0	-330.6	0.00	0.00	0.00
6,100.0	0.00	0.00	6,064.9	329.0	-408.0	-330.6	0.00	0.00	0.00
6,200.0	0.00	0.00	6,164.9	329.0	-408.0	-330.6	0.00	0.00	0.00
6,300.0	0.00	0.00	6,264.9	329.0	-408.0	-330.6	0.00	0.00	0.00
6,400.0	0.00	0.00	6,364.9	329.0	-408.0	-330.6	0.00	0.00	0.00
6,500.0	0.00	0.00	6,464.9	329.0	-408.0	-330.6	0.00	0.00	0.00
6,600.0	0.00	0.00	6,564.9	329.0	-408.0	-330.6	0.00	0.00	0.00
6,700.0	0.00	0.00	6,664.9	329.0	-408.0	-330.6	0.00	0.00	0.00
6,800.0	0.00	0.00	6,764.9	329.0	-408.0	-330.6	0.00	0.00	0.00
6,900.0	0.00	0.00	6,864.9	329.0	-408.0	-330.6	0.00	0.00	0.00
6,995.2	0.00	0.00	6,960.1	329.0	-408.0	-330.6	0.00	0.00	0.00
KOP #2 - Start Build 8.00									
7,000.0	0.39	174.46	6,964.9	329.0	-408.0	-330.6	8.07	8.07	0.00
7,100.0	8.39	174.46	7,064.5	321.4	-407.3	-323.0	8.00	8.00	0.00
7,200.0	16.39	174.46	7,162.1	300.0	-405.2	-301.6	8.00	8.00	0.00
7,300.0	24.40	174.46	7,255.8	265.4	-401.8	-267.0	8.00	8.00	0.00
7,400.0	32.40	174.46	7,343.7	218.1	-397.2	-219.7	8.00	8.00	0.00
7,500.0	40.40	174.46	7,424.1	159.1	-391.5	-160.6	8.00	8.00	0.00
7,600.0	48.40	174.46	7,495.5	89.5	-384.8	-91.0	8.00	8.00	0.00
7,700.0	56.41	174.46	7,556.4	10.7	-377.1	-12.2	8.00	8.00	0.00
7,800.0	64.41	174.46	7,605.8	-75.8	-368.8	74.3	8.00	8.00	0.00
7,900.0	72.41	174.46	7,642.5	-168.3	-359.8	166.8	8.00	8.00	0.00
8,000.0	80.42	174.46	7,666.0	-265.0	-350.4	263.6	8.00	8.00	0.00
8,100.0	88.42	174.46	7,675.7	-363.9	-340.8	362.6	8.00	8.00	0.00
8,116.1	89.71	174.46	7,675.0	-379.0	-339.4	377.6	8.00	8.00	0.00
8,117.1	89.71	174.46	7,675.0	-380.0	-339.3	378.6	0.00	0.00	0.00
Start DLS 1.00 TFO 91.74 - LPL 735'FNL & 1011'FEL, Sec.10									
8,129.4	89.71	174.59	7,675.1	-392.2	-338.1	390.9	1.00	-0.03	1.00
8,200.0	89.71	174.59	7,675.4	-462.5	-331.4	461.2	0.00	0.00	0.00
8,300.0	89.71	174.59	7,675.9	-562.0	-322.0	560.7	0.00	0.00	0.00
8,400.0	89.71	174.59	7,676.4	-661.6	-312.6	660.3	0.00	0.00	0.00
8,500.0	89.71	174.59	7,677.0	-761.1	-303.1	759.9	0.00	0.00	0.00
8,600.0	89.71	174.59	7,677.5	-860.7	-293.7	859.5	0.00	0.00	0.00
8,700.0	89.71	174.59	7,678.0	-960.2	-284.3	959.1	0.00	0.00	0.00
8,800.0	89.71	174.59	7,678.5	-1,059.8	-274.8	1,058.7	0.00	0.00	0.00
8,900.0	89.71	174.59	7,679.0	-1,159.4	-265.4	1,158.3	0.00	0.00	0.00
9,000.0	89.71	174.59	7,679.5	-1,258.9	-256.0	1,257.9	0.00	0.00	0.00
9,100.0	89.71	174.59	7,680.0	-1,358.5	-246.5	1,357.5	0.00	0.00	0.00
9,200.0	89.71	174.59	7,680.6	-1,458.0	-237.1	1,457.1	0.00	0.00	0.00
9,300.0	89.71	174.59	7,681.1	-1,557.6	-227.7	1,556.6	0.00	0.00	0.00

<b>Database:</b>	US_EDM	<b>Local Co-ordinate Reference:</b>	Well Salt Ranch Fee 202-1015H
<b>Company:</b>	Clear Creek Resource Partners	<b>TVD Reference:</b>	WELL @ 5456.0ft (Original Well Elev)
<b>Project:</b>	SEC.10-T11N-R64W	<b>MD Reference:</b>	WELL @ 5456.0ft (Original Well Elev)
<b>Site:</b>	Salt Ranch East 10 Pad Sec.10-T11N-R64W	<b>North Reference:</b>	True
<b>Well:</b>	Salt Ranch Fee 202-1015H	<b>Survey Calculation Method:</b>	Minimum Curvature
<b>Wellbore:</b>	Wellbore #1		
<b>Design:</b>	Plan #2 (10-11-17)		

Planned Survey									
Measured Depth (ft)	Inclination (°)	Azimuth (°)	Vertical Depth (ft)	+N/-S (ft)	+E/-W (ft)	Vertical Section (ft)	Dogleg Rate (°/100usft)	Build Rate (°/100usft)	Turn Rate (°/100usft)
9,400.0	89.71	174.59	7,681.6	-1,657.1	-218.2	1,656.2	0.00	0.00	0.00
9,500.0	89.71	174.59	7,682.1	-1,756.7	-208.8	1,755.8	0.00	0.00	0.00
9,600.0	89.71	174.59	7,682.6	-1,856.2	-199.4	1,855.4	0.00	0.00	0.00
9,700.0	89.71	174.59	7,683.1	-1,955.8	-189.9	1,955.0	0.00	0.00	0.00
9,800.0	89.71	174.59	7,683.6	-2,055.3	-180.5	2,054.6	0.00	0.00	0.00
9,900.0	89.71	174.59	7,684.1	-2,154.9	-171.0	2,154.2	0.00	0.00	0.00
10,000.0	89.71	174.59	7,684.7	-2,254.4	-161.6	2,253.8	0.00	0.00	0.00
10,100.0	89.71	174.59	7,685.2	-2,354.0	-152.2	2,353.4	0.00	0.00	0.00
10,200.0	89.71	174.59	7,685.7	-2,453.5	-142.7	2,452.9	0.00	0.00	0.00
10,300.0	89.71	174.59	7,686.2	-2,553.1	-133.3	2,552.5	0.00	0.00	0.00
10,400.0	89.71	174.59	7,686.7	-2,652.6	-123.9	2,652.1	0.00	0.00	0.00
10,500.0	89.71	174.59	7,687.2	-2,752.2	-114.4	2,751.7	0.00	0.00	0.00
10,600.0	89.71	174.59	7,687.7	-2,851.7	-105.0	2,851.3	0.00	0.00	0.00
10,700.0	89.71	174.59	7,688.2	-2,951.3	-95.6	2,950.9	0.00	0.00	0.00
10,800.0	89.71	174.59	7,688.8	-3,050.9	-86.1	3,050.5	0.00	0.00	0.00
10,900.0	89.71	174.59	7,689.3	-3,150.4	-76.7	3,150.1	0.00	0.00	0.00
11,000.0	89.71	174.59	7,689.8	-3,250.0	-67.3	3,249.7	0.00	0.00	0.00
11,100.0	89.71	174.59	7,690.3	-3,349.5	-57.8	3,349.3	0.00	0.00	0.00
11,200.0	89.71	174.59	7,690.8	-3,449.1	-48.4	3,448.8	0.00	0.00	0.00
11,300.0	89.71	174.59	7,691.3	-3,548.6	-39.0	3,548.4	0.00	0.00	0.00
11,400.0	89.71	174.59	7,691.8	-3,648.2	-29.5	3,648.0	0.00	0.00	0.00
11,500.0	89.71	174.59	7,692.3	-3,747.7	-20.1	3,747.6	0.00	0.00	0.00
11,600.0	89.71	174.59	7,692.9	-3,847.3	-10.7	3,847.2	0.00	0.00	0.00
11,700.0	89.71	174.59	7,693.4	-3,946.8	-1.2	3,946.8	0.00	0.00	0.00
11,800.0	89.71	174.59	7,693.9	-4,046.4	8.2	4,046.4	0.00	0.00	0.00
11,900.0	89.71	174.59	7,694.4	-4,145.9	17.7	4,146.0	0.00	0.00	0.00
12,000.0	89.71	174.59	7,694.9	-4,245.5	27.1	4,245.6	0.00	0.00	0.00
12,100.0	89.71	174.59	7,695.4	-4,345.0	36.5	4,345.1	0.00	0.00	0.00
12,200.0	89.71	174.59	7,695.9	-4,444.6	46.0	4,444.7	0.00	0.00	0.00
12,300.0	89.71	174.59	7,696.4	-4,544.1	55.4	4,544.3	0.00	0.00	0.00
12,400.0	89.71	174.59	7,697.0	-4,643.7	64.8	4,643.9	0.00	0.00	0.00
12,500.0	89.71	174.59	7,697.5	-4,743.2	74.3	4,743.5	0.00	0.00	0.00
12,600.0	89.71	174.59	7,698.0	-4,842.8	83.7	4,843.1	0.00	0.00	0.00
12,700.0	89.71	174.59	7,698.5	-4,942.4	93.1	4,942.7	0.00	0.00	0.00
12,800.0	89.71	174.59	7,699.0	-5,041.9	102.6	5,042.3	0.00	0.00	0.00
12,837.6	89.71	174.59	7,699.2	-5,079.3	106.1	5,079.7	0.00	0.00	0.00
Start DLS 2.00 TFO 90.02 - WP (202-1015H)									
12,900.0	89.71	175.83	7,699.5	-5,141.5	111.3	5,141.9	2.00	0.00	2.00
13,000.0	89.71	177.83	7,700.0	-5,241.4	116.8	5,241.8	2.00	0.00	2.00
13,100.0	89.71	179.83	7,700.5	-5,341.3	118.9	5,341.8	2.00	0.00	2.00
13,155.8	89.71	180.95	7,700.8	-5,397.2	118.5	5,397.6	2.00	0.00	2.00
13,200.0	89.71	180.95	7,701.1	-5,441.3	117.8	5,441.7	0.00	0.00	0.00
13,300.0	89.71	180.95	7,701.6	-5,541.3	116.1	5,541.7	0.00	0.00	0.00
13,400.0	89.71	180.95	7,702.1	-5,641.3	114.4	5,641.7	0.00	0.00	0.00
13,500.0	89.71	180.95	7,702.6	-5,741.3	112.8	5,741.7	0.00	0.00	0.00
13,600.0	89.71	180.95	7,703.1	-5,841.3	111.1	5,841.7	0.00	0.00	0.00
13,700.0	89.71	180.95	7,703.6	-5,941.2	109.5	5,941.6	0.00	0.00	0.00
13,800.0	89.71	180.95	7,704.1	-6,041.2	107.8	6,041.6	0.00	0.00	0.00
13,900.0	89.71	180.95	7,704.7	-6,141.2	106.1	6,141.6	0.00	0.00	0.00
14,000.0	89.71	180.95	7,705.2	-6,241.2	104.5	6,241.6	0.00	0.00	0.00
14,100.0	89.71	180.95	7,705.7	-6,341.2	102.8	6,341.5	0.00	0.00	0.00
14,200.0	89.71	180.95	7,706.2	-6,441.2	101.2	6,441.5	0.00	0.00	0.00
14,300.0	89.71	180.95	7,706.7	-6,541.2	99.5	6,541.5	0.00	0.00	0.00
14,400.0	89.71	180.95	7,707.2	-6,641.1	97.8	6,641.5	0.00	0.00	0.00

<b>Database:</b>	US_EDM	<b>Local Co-ordinate Reference:</b>	Well Salt Ranch Fee 202-1015H
<b>Company:</b>	Clear Creek Resource Partners	<b>TVD Reference:</b>	WELL @ 5456.0ft (Original Well Elev)
<b>Project:</b>	SEC.10-T11N-R64W	<b>MD Reference:</b>	WELL @ 5456.0ft (Original Well Elev)
<b>Site:</b>	Salt Ranch East 10 Pad Sec.10-T11N-R64W	<b>North Reference:</b>	True
<b>Well:</b>	Salt Ranch Fee 202-1015H	<b>Survey Calculation Method:</b>	Minimum Curvature
<b>Wellbore:</b>	Wellbore #1		
<b>Design:</b>	Plan #2 (10-11-17)		

Planned Survey									
Measured Depth (ft)	Inclination (°)	Azimuth (°)	Vertical Depth (ft)	+N/-S (ft)	+E/-W (ft)	Vertical Section (ft)	Dogleg Rate (°/100usft)	Build Rate (°/100usft)	Turn Rate (°/100usft)
14,500.0	89.71	180.95	7,707.7	-6,741.1	96.2	6,741.5	0.00	0.00	0.00
14,600.0	89.71	180.95	7,708.2	-6,841.1	94.5	6,841.4	0.00	0.00	0.00
14,700.0	89.71	180.95	7,708.8	-6,941.1	92.9	6,941.4	0.00	0.00	0.00
14,800.0	89.71	180.95	7,709.3	-7,041.1	91.2	7,041.4	0.00	0.00	0.00
14,900.0	89.71	180.95	7,709.8	-7,141.1	89.5	7,141.4	0.00	0.00	0.00
15,000.0	89.71	180.95	7,710.3	-7,241.0	87.9	7,241.3	0.00	0.00	0.00
15,100.0	89.71	180.95	7,710.8	-7,341.0	86.2	7,341.3	0.00	0.00	0.00
15,200.0	89.71	180.95	7,711.3	-7,441.0	84.6	7,441.3	0.00	0.00	0.00
15,300.0	89.71	180.95	7,711.8	-7,541.0	82.9	7,541.3	0.00	0.00	0.00
15,400.0	89.71	180.95	7,712.4	-7,641.0	81.2	7,641.3	0.00	0.00	0.00
15,500.0	89.71	180.95	7,712.9	-7,741.0	79.6	7,741.2	0.00	0.00	0.00
15,600.0	89.71	180.95	7,713.4	-7,841.0	77.9	7,841.2	0.00	0.00	0.00
15,700.0	89.71	180.95	7,713.9	-7,940.9	76.3	7,941.2	0.00	0.00	0.00
15,800.0	89.71	180.95	7,714.4	-8,040.9	74.6	8,041.2	0.00	0.00	0.00
15,900.0	89.71	180.95	7,714.9	-8,140.9	72.9	8,141.1	0.00	0.00	0.00
16,000.0	89.71	180.95	7,715.4	-8,240.9	71.3	8,241.1	0.00	0.00	0.00
16,100.0	89.71	180.95	7,715.9	-8,340.9	69.6	8,341.1	0.00	0.00	0.00
16,200.0	89.71	180.95	7,716.5	-8,440.9	68.0	8,441.1	0.00	0.00	0.00
16,300.0	89.71	180.95	7,717.0	-8,540.9	66.3	8,541.0	0.00	0.00	0.00
16,400.0	89.71	180.95	7,717.5	-8,640.8	64.6	8,641.0	0.00	0.00	0.00
16,500.0	89.71	180.95	7,718.0	-8,740.8	63.0	8,741.0	0.00	0.00	0.00
16,600.0	89.71	180.95	7,718.5	-8,840.8	61.3	8,841.0	0.00	0.00	0.00
16,700.0	89.71	180.95	7,719.0	-8,940.8	59.7	8,941.0	0.00	0.00	0.00
16,800.0	89.71	180.95	7,719.5	-9,040.8	58.0	9,040.9	0.00	0.00	0.00
16,900.0	89.71	180.95	7,720.1	-9,140.8	56.3	9,140.9	0.00	0.00	0.00
17,000.0	89.71	180.95	7,720.6	-9,240.7	54.7	9,240.9	0.00	0.00	0.00
17,100.0	89.71	180.95	7,721.1	-9,340.7	53.0	9,340.9	0.00	0.00	0.00
17,200.0	89.71	180.95	7,721.6	-9,440.7	51.4	9,440.8	0.00	0.00	0.00
17,300.0	89.71	180.95	7,722.1	-9,540.7	49.7	9,540.8	0.00	0.00	0.00
17,400.0	89.71	180.95	7,722.6	-9,640.7	48.1	9,640.8	0.00	0.00	0.00
17,500.0	89.71	180.95	7,723.1	-9,740.7	46.4	9,740.8	0.00	0.00	0.00
17,600.0	89.71	180.95	7,723.6	-9,840.7	44.7	9,840.8	0.00	0.00	0.00
17,700.0	89.71	180.95	7,724.2	-9,940.6	43.1	9,940.7	0.00	0.00	0.00
17,800.0	89.71	180.95	7,724.7	-10,040.6	41.4	10,040.7	0.00	0.00	0.00
17,863.7	89.71	180.95	7,725.0	-10,104.3	40.4	10,104.4	0.00	0.00	0.00
TD at 17863.7 - BHL 300°FSL & 1021°FEL, Sec.15									

<b>Database:</b>	US_EDM	<b>Local Co-ordinate Reference:</b>	Well Salt Ranch Fee 202-1015H
<b>Company:</b>	Clear Creek Resource Partners	<b>TVD Reference:</b>	WELL @ 5456.0ft (Original Well Elev)
<b>Project:</b>	SEC.10-T11N-R64W	<b>MD Reference:</b>	WELL @ 5456.0ft (Original Well Elev)
<b>Site:</b>	Salt Ranch East 10 Pad Sec.10-T11N-R64W	<b>North Reference:</b>	True
<b>Well:</b>	Salt Ranch Fee 202-1015H	<b>Survey Calculation Method:</b>	Minimum Curvature
<b>Wellbore:</b>	Wellbore #1		
<b>Design:</b>	Plan #2 (10-11-17)		

Design Targets									
Target Name	Dip Angle	Dip Dir.	TVD	+N/-S	+E/-W	Northing	Easting	Latitude	Longitude
- hit/miss target	(°)	(°)	(ft)	(ft)	(ft)	(usft)	(usft)		
- Shape									
SHL 357'FNL & 637'FEL - plan hits target center - Point	0.00	0.00	1.0	0.0	0.0	1,587,572.08	3,269,119.95	40.942192	-104.525906
LPL 735'FNL & 1011'FEI - plan hits target center - Point	0.00	0.00	7,675.0	-380.0	-339.3	1,587,188.35	3,268,784.86	40.941149	-104.527134
WP (202-1015H) - plan hits target center - Point	0.00	0.00	7,699.2	-5,079.3	106.1	1,582,494.07	3,269,281.86	40.928251	-104.525522
BHL 300'FSL & 1021'FE - plan hits target center - Point	0.00	0.00	7,725.0	-10,104.4	40.4	1,577,468.48	3,269,271.30	40.914459	-104.525760

Plan Annotations					
Measured Depth	Vertical Depth	Local Coordinates			
(ft)	(ft)	+N/-S	+E/-W		
		(ft)	(ft)	Comment	
800.0	800.0	0.0	0.0	KOP - Start Build 1.50	
4,635.5	4,601.7	311.5	-386.3	Start Drop -2.00	
6,995.2	6,960.1	329.0	-408.0	KOP #2 - Start Build 8.00	
8,117.1	7,675.0	-380.0	-339.3	Start DLS 1.00 TFO 91.74	
12,837.6	7,699.2	-5,079.3	106.1	Start DLS 2.00 TFO 90.02	
17,863.7	7,725.0	-10,104.3	40.4	TD at 17863.7	





## **Clear Creek Resource Partners**

**SEC.10-T11N-R64W**

**Salt Ranch East 10 Pad Sec.10-T11N-R64W**

**Salt Ranch Fee 202-1015H**

**Wellbore #1**

**Plan #2 (10-11-17)**

## **Anticollision Report**

**11 October, 2017**

<b>Company:</b>	Clear Creek Resource Partners	<b>Local Co-ordinate Reference:</b>	Well Salt Ranch Fee 202-1015H
<b>Project:</b>	SEC.10-T11N-R64W	<b>TVD Reference:</b>	WELL @ 5456.0ft (Original Well Elev)
<b>Reference Site:</b>	Salt Ranch East 10 Pad Sec.10-T11N-R64W	<b>MD Reference:</b>	WELL @ 5456.0ft (Original Well Elev)
<b>Site Error:</b>	0.0 ft	<b>North Reference:</b>	True
<b>Reference Well:</b>	Salt Ranch Fee 202-1015H	<b>Survey Calculation Method:</b>	Minimum Curvature
<b>Well Error:</b>	0.0 ft	<b>Output errors are at</b>	2.00 sigma
<b>Reference Wellbore</b>	Wellbore #1	<b>Database:</b>	US_EDM
<b>Reference Design:</b>	Plan #2 (10-11-17)	<b>Offset TVD Reference:</b>	Offset Datum

<b>Reference</b>	Plan #2 (10-11-17)		
<b>Filter type:</b>	NO GLOBAL FILTER: Using user defined selection & filtering criteria		
<b>Interpolation Method:</b>	MD Interval 100.0ft	<b>Error Model:</b>	ISCWSA
<b>Depth Range:</b>	Unlimited	<b>Scan Method:</b>	Closest Approach 3D
<b>Results Limited by:</b>	Maximum center-center distance of 500.0 ft	<b>Error Surface:</b>	Elliptical Conic
<b>Warning Levels Evaluated at:</b>	2.00 Sigma	<b>Casing Method:</b>	Not applied

Survey Tool Program		Date	10/11/2017	
From (ft)	To (ft)	Survey (Wellbore)	Tool Name	Description
0.0	17,863.7	Plan #2 (10-11-17) (Wellbore #1)	MWD	MWD - Standard

Summary						
Site Name	Reference Measured	Offset Measured	Distance		Separation	Warning
Offset Well - Wellbore - Design	Depth (ft)	Depth (ft)	Between Centres (ft)	Between Ellipses (ft)	Factor	
Salt Ranch East 10 Pad Sec.10-T11N-R64W						
Salt Ranch Fee 201-1015H - Wellbore #1 - Plan #2 (10-1	200.0	200.0	60.0	59.3	88.916	CC, ES
Salt Ranch Fee 201-1015H - Wellbore #1 - Plan #2 (10-1	1,000.0	992.5	110.6	106.2	25.406	SF
Salt Ranch Fee 501-1015H - Wellbore #1 - Plan #2 (10-1	400.0	400.0	30.1	28.5	19.141	CC, ES
Salt Ranch Fee 501-1015H - Wellbore #1 - Plan #2 (10-1	700.0	698.5	36.1	33.2	12.355	SF
Salt Ranch Fee 502-1015H - Wellbore #1 - Plan #2 (10-1	200.0	200.0	29.8	29.2	44.253	CC, ES
Salt Ranch Fee 502-1015H - Wellbore #1 - Plan #2 (10-1	17,863.7	18,093.2	385.3	45.6	1.134	Level 2, SF

Offset Design		Salt Ranch East 10 Pad Sec.10-T11N-R64W - Salt Ranch Fee 201-1015H - Wellbore #1 - Plan #2 (10-1											Offset Site Error:		0.0 ft
Survey Program:		0-MWD											Offset Well Error:		0.0 ft
Reference		Offset		Semi Major Axis			Distance							Warning	
Measured Depth (ft)	Vertical Depth (ft)	Measured Depth (ft)	Vertical Depth (ft)	Reference (ft)	Offset (ft)	Highside Toolface (°)	Offset Wellbore Centre		Between Centres (ft)	Between Ellipses (ft)	Minimum Separation (ft)	Separation Factor			
							+N/-S (ft)	+E/-W (ft)							
0.0	0.0	0.0	0.0	0.0	0.0	90.69	-0.7	60.0	60.0						
100.0	100.0	100.0	100.0	0.1	0.1	90.69	-0.7	60.0	60.0	59.7	0.22	266.749			
200.0	200.0	200.0	200.0	0.3	0.3	90.69	-0.7	60.0	60.0	59.3	0.67	88.916	CC, ES		
300.0	300.0	299.2	299.2	0.6	0.6	89.64	0.4	60.6	60.6	59.5	1.12	54.084			
400.0	400.0	398.3	398.2	0.8	0.8	86.61	3.7	62.6	62.7	61.1	1.57	39.928			
500.0	500.0	497.1	496.8	1.0	1.0	82.03	9.2	65.8	66.5	64.5	2.03	32.778			
600.0	600.0	595.5	594.8	1.2	1.3	76.50	16.9	70.3	72.5	70.0	2.51	28.941			
700.0	700.0	694.4	693.1	1.5	1.5	70.86	26.3	75.9	80.7	77.7	3.00	26.850			
800.0	800.0	793.7	791.8	1.7	1.8	66.21	36.0	81.6	89.6	86.0	3.51	25.502			
900.0	900.0	893.1	890.5	1.9	2.1	114.08	45.6	87.3	99.5	95.6	3.89	25.556			
1,000.0	999.9	992.5	989.3	2.1	2.4	112.65	55.2	93.0	110.6	106.2	4.35	25.406	SF		
1,100.0	1,099.7	1,091.7	1,087.9	2.4	2.7	112.59	64.9	98.6	122.7	117.9	4.82	25.446			
1,200.0	1,199.3	1,190.8	1,186.3	2.6	3.0	113.51	74.5	104.3	135.9	130.6	5.31	25.600			
1,300.0	1,298.6	1,289.7	1,284.6	2.8	3.3	115.15	84.1	110.0	150.2	144.4	5.81	25.837			
1,400.0	1,397.6	1,388.3	1,382.6	3.1	3.6	117.22	93.6	115.6	165.6	159.2	6.34	26.114			
1,500.0	1,496.6	1,486.9	1,480.6	3.4	3.9	119.04	103.2	121.2	181.2	174.3	6.88	26.343			
1,600.0	1,595.7	1,585.6	1,578.6	3.7	4.2	120.56	112.8	126.9	196.9	189.5	7.42	26.534			
1,700.0	1,694.7	1,684.2	1,676.6	4.0	4.5	121.87	122.3	132.5	212.8	204.8	7.97	26.697			
1,800.0	1,793.7	1,782.8	1,774.6	4.3	4.8	122.99	131.9	138.2	228.7	220.2	8.52	26.837			
1,900.0	1,892.8	1,881.5	1,872.6	4.7	5.1	123.96	141.5	143.8	244.8	235.7	9.08	26.961			
2,000.0	1,991.8	1,980.1	1,970.6	5.0	5.4	124.82	151.0	149.5	260.9	251.2	9.64	27.070			

<b>Company:</b>	Clear Creek Resource Partners	<b>Local Co-ordinate Reference:</b>	Well Salt Ranch Fee 202-1015H
<b>Project:</b>	SEC.10-T11N-R64W	<b>TVD Reference:</b>	WELL @ 5456.0ft (Original Well Elev)
<b>Reference Site:</b>	Salt Ranch East 10 Pad Sec.10-T11N-R64W	<b>MD Reference:</b>	WELL @ 5456.0ft (Original Well Elev)
<b>Site Error:</b>	0.0 ft	<b>North Reference:</b>	True
<b>Reference Well:</b>	Salt Ranch Fee 202-1015H	<b>Survey Calculation Method:</b>	Minimum Curvature
<b>Well Error:</b>	0.0 ft	<b>Output errors are at</b>	2.00 sigma
<b>Reference Wellbore</b>	Wellbore #1	<b>Database:</b>	US_EDM
<b>Reference Design:</b>	Plan #2 (10-11-17)	<b>Offset TVD Reference:</b>	Offset Datum

Offset Design													Offset Site Error:	0.0 ft
Survey Program: 0-MWD													Offset Well Error:	0.0 ft
Reference		Offset		Semi Major Axis			Distance							Warning
Measured Depth (ft)	Vertical Depth (ft)	Measured Depth (ft)	Vertical Depth (ft)	Reference (ft)	Offset (ft)	Highside Toolface (°)	Offset Wellbore Centre +N/-S (ft)	+E/-W (ft)	Between Centres (ft)	Between Ellipses (ft)	Minimum Separation (ft)	Separation Factor		
2,100.0	2,090.8	2,078.7	2,068.6	5.3	5.7	125.57	160.6	155.1	277.0	266.8	10.20	27.168		
2,200.0	2,189.9	2,177.3	2,166.6	5.6	6.0	126.24	170.1	160.7	293.2	282.4	10.76	27.256		
2,300.0	2,288.9	2,276.0	2,264.6	6.0	6.3	126.84	179.7	166.4	309.4	298.1	11.32	27.335		
2,400.0	2,387.9	2,374.6	2,362.6	6.3	6.6	127.39	189.3	172.0	325.7	313.8	11.88	27.408		
2,500.0	2,486.9	2,473.2	2,460.6	6.6	6.9	127.88	198.8	177.7	341.9	329.5	12.45	27.475		
2,600.0	2,586.0	2,571.8	2,558.6	7.0	7.2	128.32	208.4	183.3	358.2	345.2	13.01	27.536		
2,700.0	2,685.0	2,670.5	2,656.6	7.3	7.5	128.73	218.0	188.9	374.6	361.0	13.57	27.592		
2,800.0	2,784.0	2,769.1	2,754.6	7.6	7.8	129.10	227.5	194.6	390.9	376.7	14.14	27.644		
2,900.0	2,883.1	2,867.7	2,852.6	8.0	8.1	129.45	237.1	200.2	407.2	392.5	14.71	27.693		
3,000.0	2,982.1	2,966.3	2,950.6	8.3	8.4	129.76	246.7	205.9	423.6	408.3	15.27	27.738		
3,100.0	3,081.1	3,065.0	3,048.6	8.6	8.7	130.06	256.2	211.5	440.0	424.1	15.84	27.780		
3,200.0	3,180.1	3,163.6	3,146.6	9.0	9.0	130.33	265.8	217.1	456.4	439.9	16.40	27.820		
3,300.0	3,279.2	3,262.2	3,244.6	9.3	9.3	130.58	275.3	222.8	472.7	455.8	16.97	27.857		
3,400.0	3,378.2	3,360.9	3,342.6	9.7	9.6	130.82	284.9	228.4	489.1	471.6	17.54	27.891		

<b>Company:</b>	Clear Creek Resource Partners	<b>Local Co-ordinate Reference:</b>	Well Salt Ranch Fee 202-1015H
<b>Project:</b>	SEC.10-T11N-R64W	<b>TVD Reference:</b>	WELL @ 5456.0ft (Original Well Elev)
<b>Reference Site:</b>	Salt Ranch East 10 Pad Sec.10-T11N-R64W	<b>MD Reference:</b>	WELL @ 5456.0ft (Original Well Elev)
<b>Site Error:</b>	0.0 ft	<b>North Reference:</b>	True
<b>Reference Well:</b>	Salt Ranch Fee 202-1015H	<b>Survey Calculation Method:</b>	Minimum Curvature
<b>Well Error:</b>	0.0 ft	<b>Output errors are at</b>	2.00 sigma
<b>Reference Wellbore</b>	Wellbore #1	<b>Database:</b>	US_EDM
<b>Reference Design:</b>	Plan #2 (10-11-17)	<b>Offset TVD Reference:</b>	Offset Datum

Offset Design													Offset Site Error:	0.0 ft
Survey Program: 0-MWD													Offset Well Error:	0.0 ft
Reference		Offset		Semi Major Axis			Distance							Warning
Measured Depth (ft)	Vertical Depth (ft)	Measured Depth (ft)	Vertical Depth (ft)	Reference (ft)	Offset (ft)	Highside Toolface (°)	Offset Wellbore Centre +N/-S (ft)	+E/-W (ft)	Between Centres (ft)	Between Ellipses (ft)	Minimum Separation (ft)	Separation Factor		
0.0	0.0	0.0	0.0	0.0	0.0	90.69	-0.4	30.1	30.1					
100.0	100.0	100.0	100.0	0.1	0.1	90.69	-0.4	30.1	30.1	29.9	0.22	133.989		
200.0	200.0	200.0	200.0	0.3	0.3	90.69	-0.4	30.1	30.1	29.4	0.67	44.663		
300.0	300.0	300.0	300.0	0.6	0.6	90.69	-0.4	30.1	30.1	29.0	1.12	26.798		
400.0	400.0	400.0	400.0	0.8	0.8	90.69	-0.4	30.1	30.1	28.5	1.57	19.141 CC, ES		
500.0	500.0	499.7	499.7	1.0	1.0	88.43	0.8	30.6	30.6	28.6	2.02	15.151		
600.0	600.0	599.2	599.1	1.2	1.2	82.13	4.4	32.1	32.4	29.9	2.47	13.122		
700.0	700.0	698.5	698.2	1.5	1.5	73.23	10.4	34.6	36.1	33.2	2.93	12.355 SF		
800.0	800.0	797.4	796.7	1.7	1.7	63.76	18.7	38.0	42.5	39.1	3.39	12.521		
900.0	900.0	896.6	895.3	1.9	2.0	108.04	28.8	42.1	51.6	47.8	3.84	13.436		
1,000.0	999.9	996.0	994.1	2.1	2.2	105.55	38.9	46.3	62.0	57.7	4.30	14.425		
1,100.0	1,099.7	1,095.4	1,092.9	2.4	2.5	105.72	49.1	50.5	73.1	68.4	4.77	15.344		
1,200.0	1,199.3	1,194.7	1,191.5	2.6	2.8	107.50	59.2	54.7	85.0	79.8	5.25	16.191		
1,300.0	1,298.6	1,293.7	1,290.0	2.8	3.1	110.25	69.4	58.9	97.8	92.1	5.76	16.998		
1,400.0	1,397.6	1,392.6	1,388.2	3.1	3.4	113.40	79.5	63.1	111.6	105.3	6.28	17.767		
1,500.0	1,496.6	1,491.5	1,486.5	3.4	3.7	115.96	89.6	67.2	125.8	118.9	6.82	18.436		
1,600.0	1,595.7	1,590.3	1,584.7	3.7	4.0	118.00	99.7	71.4	140.1	132.7	7.37	19.014		
1,700.0	1,694.7	1,689.2	1,683.0	4.0	4.2	119.67	109.8	75.6	154.6	146.6	7.92	19.516		
1,800.0	1,793.7	1,788.0	1,781.2	4.3	4.5	121.04	119.9	79.7	169.1	160.7	8.48	19.956		
1,900.0	1,892.8	1,886.9	1,879.5	4.7	4.8	122.20	130.0	83.9	183.8	174.8	9.03	20.344		
2,000.0	1,991.8	1,985.7	1,977.8	5.0	5.1	123.19	140.1	88.1	198.5	188.9	9.60	20.687		
2,100.0	2,090.8	2,084.6	2,076.0	5.3	5.4	124.04	150.2	92.2	213.3	203.1	10.16	20.993		
2,200.0	2,189.9	2,183.5	2,174.3	5.6	5.7	124.78	160.3	96.4	228.1	217.4	10.72	21.267		
2,300.0	2,288.9	2,282.3	2,272.5	6.0	6.0	125.43	170.4	100.6	242.9	231.6	11.29	21.515		
2,400.0	2,387.9	2,381.2	2,370.8	6.3	6.3	126.00	180.5	104.7	257.8	245.9	11.86	21.738		
2,500.0	2,486.9	2,480.0	2,469.0	6.6	6.6	126.52	190.6	108.9	272.7	260.3	12.43	21.942		
2,600.0	2,586.0	2,578.9	2,567.3	7.0	6.9	126.97	200.7	113.1	287.6	274.6	13.00	22.127		
2,700.0	2,685.0	2,677.7	2,665.5	7.3	7.2	127.39	210.8	117.2	302.5	289.0	13.57	22.297		
2,800.0	2,784.0	2,776.6	2,763.8	7.6	7.5	127.76	220.9	121.4	317.5	303.3	14.14	22.454		
2,900.0	2,883.1	2,875.5	2,862.0	8.0	7.8	128.11	231.0	125.6	332.4	317.7	14.71	22.598		
3,000.0	2,982.1	2,974.3	2,960.3	8.3	8.1	128.42	241.1	129.7	347.4	332.1	15.28	22.731		
3,100.0	3,081.1	3,073.2	3,058.5	8.6	8.4	128.70	251.2	133.9	362.3	346.5	15.85	22.855		
3,200.0	3,180.1	3,172.0	3,156.8	9.0	8.7	128.97	261.3	138.1	377.3	360.9	16.43	22.970		
3,300.0	3,279.2	3,270.9	3,255.0	9.3	9.0	129.21	271.4	142.2	392.3	375.3	17.00	23.077		
3,400.0	3,378.2	3,369.7	3,353.3	9.7	9.3	129.44	281.5	146.4	407.3	389.7	17.57	23.177		
3,500.0	3,477.2	3,468.6	3,451.5	10.0	9.6	129.65	291.6	150.6	422.3	404.2	18.15	23.271		
3,600.0	3,576.3	3,567.5	3,549.8	10.3	9.9	129.84	301.7	154.8	437.3	418.6	18.72	23.359		
3,700.0	3,675.3	3,666.3	3,648.0	10.7	10.2	130.02	311.8	158.9	452.3	433.0	19.30	23.442		
3,800.0	3,774.3	3,771.3	3,752.5	11.0	10.4	130.29	321.7	163.0	466.9	447.1	19.86	23.514		
3,900.0	3,873.3	3,880.0	3,860.9	11.4	10.7	130.94	328.5	165.8	479.6	459.3	20.37	23.551		
4,000.0	3,972.4	3,988.8	3,969.7	11.7	10.8	131.96	331.5	167.1	490.5	469.6	20.83	23.543		
4,100.0	4,071.4	4,090.5	4,071.4	12.0	11.0	133.16	331.6	167.1	500.0	478.7	21.27	23.503		

<b>Company:</b>	Clear Creek Resource Partners	<b>Local Co-ordinate Reference:</b>	Well Salt Ranch Fee 202-1015H
<b>Project:</b>	SEC.10-T11N-R64W	<b>TVD Reference:</b>	WELL @ 5456.0ft (Original Well Elev)
<b>Reference Site:</b>	Salt Ranch East 10 Pad Sec.10-T11N-R64W	<b>MD Reference:</b>	WELL @ 5456.0ft (Original Well Elev)
<b>Site Error:</b>	0.0 ft	<b>North Reference:</b>	True
<b>Reference Well:</b>	Salt Ranch Fee 202-1015H	<b>Survey Calculation Method:</b>	Minimum Curvature
<b>Well Error:</b>	0.0 ft	<b>Output errors are at</b>	2.00 sigma
<b>Reference Wellbore</b>	Wellbore #1	<b>Database:</b>	US_EDM
<b>Reference Design:</b>	Plan #2 (10-11-17)	<b>Offset TVD Reference:</b>	Offset Datum

Offset Design													Offset Site Error:	0.0 ft
Survey Program: 0-MWD													Offset Well Error:	0.0 ft
Reference		Offset		Semi Major Axis			Distance							Warning
Measured Depth (ft)	Vertical Depth (ft)	Measured Depth (ft)	Vertical Depth (ft)	Reference (ft)	Offset (ft)	Highside Toolface (°)	Offset Wellbore Centre +N/-S (ft)	+E/-W (ft)	Between Centres (ft)	Between Ellipses (ft)	Minimum Separation (ft)	Separation Factor		
0.0	0.0	0.0	0.0	0.0	0.0	-89.30	0.4	-29.8	29.8					
100.0	100.0	100.0	100.0	0.1	0.1	-89.30	0.4	-29.8	29.8	29.6	0.22	132.760		
200.0	200.0	200.0	200.0	0.3	0.3	-89.30	0.4	-29.8	29.8	29.2	0.67	44.253 CC, ES		
300.0	300.0	299.3	299.3	0.6	0.6	-88.31	0.9	-31.0	31.0	29.9	1.12	27.774		
400.0	400.0	398.4	398.3	0.8	0.8	-85.77	2.6	-34.5	34.6	33.1	1.56	22.137		
500.0	500.0	497.3	497.0	1.0	1.0	-82.54	5.3	-40.3	40.8	38.7	2.02	20.170		
600.0	600.0	595.8	595.0	1.2	1.3	-79.39	9.1	-48.4	49.5	47.0	2.49	19.885		
700.0	700.0	693.7	692.3	1.5	1.5	-76.68	13.9	-58.7	60.8	57.8	2.97	20.470		
800.0	800.0	791.0	788.6	1.7	1.9	-74.49	19.7	-71.1	74.7	71.2	3.47	21.525		
900.0	900.0	887.7	884.0	1.9	2.2	-21.87	26.6	-85.7	90.0	86.1	3.84	23.426		
1,000.0	999.9	986.6	981.2	2.1	2.6	-21.19	34.2	-101.9	104.3	100.0	4.30	24.255		
1,100.0	1,099.7	1,085.9	1,078.9	2.4	3.0	-21.13	41.8	-118.1	116.2	111.4	4.76	24.395		
1,200.0	1,199.3	1,185.4	1,176.8	2.6	3.4	-21.51	49.4	-134.4	125.6	120.4	5.23	24.004		
1,300.0	1,298.6	1,285.1	1,274.9	2.8	3.7	-22.27	57.1	-150.7	132.7	126.9	5.71	23.223		
1,400.0	1,397.6	1,385.0	1,373.1	3.1	4.1	-23.30	64.7	-167.1	137.9	131.7	6.20	22.224		
1,500.0	1,496.6	1,484.8	1,471.3	3.4	4.6	-24.30	72.4	-183.4	143.0	136.3	6.70	21.332		
1,600.0	1,595.7	1,584.6	1,569.5	3.7	5.0	-25.22	80.1	-199.7	148.2	140.9	7.21	20.546		
1,700.0	1,694.7	1,684.5	1,667.7	4.0	5.4	-26.08	87.7	-216.1	153.4	145.6	7.73	19.849		
1,800.0	1,793.7	1,784.3	1,765.9	4.3	5.8	-26.89	95.4	-232.4	158.6	150.3	8.25	19.228		
1,900.0	1,892.8	1,884.2	1,864.1	4.7	6.2	-27.64	103.1	-248.7	163.8	155.1	8.78	18.671		
2,000.0	1,991.8	1,984.0	1,962.2	5.0	6.6	-28.35	110.7	-265.0	169.1	159.8	9.31	18.168		
2,100.0	2,090.8	2,083.8	2,060.4	5.3	7.0	-29.01	118.4	-281.4	174.4	164.6	9.85	17.714		
2,200.0	2,189.9	2,183.7	2,158.6	5.6	7.4	-29.63	126.0	-297.7	179.8	169.4	10.39	17.301		
2,300.0	2,288.9	2,283.5	2,256.8	6.0	7.8	-30.22	133.7	-314.0	185.1	174.2	10.94	16.923		
2,400.0	2,387.9	2,383.4	2,355.0	6.3	8.2	-30.78	141.4	-330.4	190.5	179.0	11.49	16.578		
2,500.0	2,486.9	2,483.2	2,453.2	6.6	8.6	-31.30	149.0	-346.7	195.9	183.8	12.05	16.260		
2,600.0	2,586.0	2,583.0	2,551.4	7.0	9.0	-31.80	156.7	-363.0	201.3	188.7	12.61	15.968		
2,700.0	2,685.0	2,682.9	2,649.6	7.3	9.5	-32.27	164.3	-379.4	206.7	193.5	13.17	15.697		
2,800.0	2,784.0	2,782.7	2,747.8	7.6	9.9	-32.71	172.0	-395.7	212.1	198.4	13.73	15.447		
2,900.0	2,883.1	2,882.6	2,846.0	8.0	10.3	-33.14	179.7	-412.0	217.6	203.3	14.30	15.214		
3,000.0	2,982.1	2,982.4	2,944.2	8.3	10.7	-33.54	187.3	-428.3	223.0	208.2	14.87	14.997		
3,100.0	3,081.1	3,082.2	3,042.4	8.6	11.1	-33.93	195.0	-444.7	228.5	213.1	15.45	14.794		
3,200.0	3,180.1	3,182.1	3,140.6	9.0	11.5	-34.29	202.7	-461.0	234.0	218.0	16.02	14.605		
3,300.0	3,279.2	3,281.9	3,238.8	9.3	11.9	-34.64	210.3	-477.3	239.5	222.9	16.60	14.428		
3,400.0	3,378.2	3,381.7	3,337.0	9.7	12.3	-34.97	218.0	-493.7	245.0	227.8	17.18	14.261		
3,500.0	3,477.2	3,481.6	3,435.2	10.0	12.7	-35.29	225.6	-510.0	250.5	232.7	17.76	14.104		
3,600.0	3,576.3	3,581.4	3,533.4	10.3	13.2	-35.60	233.3	-526.3	256.0	237.6	18.34	13.956		
3,700.0	3,675.3	3,681.3	3,631.6	10.7	13.6	-35.89	241.0	-542.7	261.5	242.6	18.93	13.817		
3,800.0	3,774.3	3,781.1	3,729.8	11.0	14.0	-36.17	248.6	-559.0	267.0	247.5	19.51	13.685		
3,900.0	3,873.3	3,880.9	3,828.0	11.4	14.4	-36.44	256.3	-575.3	272.5	252.4	20.10	13.560		
4,000.0	3,972.4	3,980.8	3,926.2	11.7	14.8	-36.70	263.9	-591.7	278.1	257.4	20.69	13.442		
4,100.0	4,071.4	4,080.6	4,024.4	12.0	15.2	-36.95	271.6	-608.0	283.6	262.3	21.28	13.330		
4,200.0	4,170.4	4,180.5	4,122.6	12.4	15.6	-37.19	279.3	-624.3	289.2	267.3	21.87	13.223		
4,300.0	4,269.5	4,280.3	4,220.8	12.7	16.0	-37.42	286.9	-640.6	294.7	272.2	22.46	13.122		
4,400.0	4,368.5	4,380.1	4,319.0	13.1	16.5	-37.64	294.6	-657.0	300.3	277.2	23.05	13.025		
4,500.0	4,467.5	4,480.0	4,417.2	13.4	16.9	-37.85	302.2	-673.3	305.8	282.2	23.65	12.933		
4,600.0	4,566.5	4,583.5	4,519.0	13.7	17.3	-38.08	310.1	-690.0	311.2	286.9	24.24	12.836		
4,700.0	4,665.7	4,684.4	4,628.7	14.1	17.6	-38.51	317.1	-705.0	314.4	289.6	24.80	12.675		
4,800.0	4,765.2	4,805.5	4,739.1	14.3	17.8	-38.85	322.3	-716.1	316.6	291.4	25.26	12.536		
4,900.0	4,865.0	4,916.6	4,849.9	14.5	18.0	-39.07	325.7	-723.3	318.1	292.5	25.64	12.406		
5,000.0	4,964.9	5,027.8	4,961.0	14.6	18.2	-39.17	327.3	-726.6	318.8	292.8	25.95	12.283		
5,100.0	5,064.9	5,131.7	5,064.9	14.8	18.3	-90.29	327.4	-726.8	318.8	293.3	25.51	12.500		

CC - Min centre to center distance or convergent point, SF - min separation factor, ES - min ellipse separation

<b>Company:</b>	Clear Creek Resource Partners	<b>Local Co-ordinate Reference:</b>	Well Salt Ranch Fee 202-1015H
<b>Project:</b>	SEC.10-T11N-R64W	<b>TVD Reference:</b>	WELL @ 5456.0ft (Original Well Elev)
<b>Reference Site:</b>	Salt Ranch East 10 Pad Sec.10-T11N-R64W	<b>MD Reference:</b>	WELL @ 5456.0ft (Original Well Elev)
<b>Site Error:</b>	0.0 ft	<b>North Reference:</b>	True
<b>Reference Well:</b>	Salt Ranch Fee 202-1015H	<b>Survey Calculation Method:</b>	Minimum Curvature
<b>Well Error:</b>	0.0 ft	<b>Output errors are at</b>	2.00 sigma
<b>Reference Wellbore</b>	Wellbore #1	<b>Database:</b>	US_EDM
<b>Reference Design:</b>	Plan #2 (10-11-17)	<b>Offset TVD Reference:</b>	Offset Datum

Offset Design													Offset Site Error:	0.0 ft
Survey Program: 0-MWD													Offset Well Error:	0.0 ft
Reference		Offset		Semi Major Axis			Distance						Warning	
Measured Depth (ft)	Vertical Depth (ft)	Measured Depth (ft)	Vertical Depth (ft)	Reference (ft)	Offset (ft)	Highside Toolface (°)	Offset Wellbore Centre +N/-S (ft)	+E/-W (ft)	Between Centres (ft)	Between Ellipses (ft)	Minimum Separation (ft)	Separation Factor		
5,200.0	5,164.9	5,231.7	5,164.9	14.9	18.5	-90.29	327.4	-726.8	318.8	293.0	25.87	12.323		
5,300.0	5,264.9	5,331.7	5,264.9	15.1	18.6	-90.29	327.4	-726.8	318.8	292.6	26.24	12.150		
5,400.0	5,364.9	5,431.7	5,364.9	15.3	18.7	-90.29	327.4	-726.8	318.8	292.2	26.61	11.981		
5,500.0	5,464.9	5,531.7	5,464.9	15.4	18.9	-90.29	327.4	-726.8	318.8	291.9	26.98	11.816		
5,600.0	5,564.9	5,631.7	5,564.9	15.6	19.0	-90.29	327.4	-726.8	318.8	291.5	27.36	11.654		
5,700.0	5,664.9	5,731.7	5,664.9	15.8	19.1	-90.29	327.4	-726.8	318.8	291.1	27.74	11.495		
5,800.0	5,764.9	5,831.7	5,764.9	16.0	19.3	-90.29	327.4	-726.8	318.8	290.7	28.12	11.340		
5,900.0	5,864.9	5,931.7	5,864.9	16.1	19.4	-90.29	327.4	-726.8	318.8	290.3	28.50	11.188		
6,000.0	5,964.9	6,031.7	5,964.9	16.3	19.6	-90.29	327.4	-726.8	318.8	290.0	28.88	11.040		
6,100.0	6,064.9	6,131.7	6,064.9	16.5	19.7	-90.29	327.4	-726.8	318.8	289.6	29.27	10.894		
6,200.0	6,164.9	6,231.7	6,164.9	16.7	19.9	-90.29	327.4	-726.8	318.8	289.2	29.65	10.752		
6,300.0	6,264.9	6,331.7	6,264.9	16.8	20.0	-90.29	327.4	-726.8	318.8	288.8	30.04	10.613		
6,400.0	6,364.9	6,431.7	6,364.9	17.0	20.2	-90.29	327.4	-726.8	318.8	288.4	30.43	10.477		
6,500.0	6,464.9	6,531.7	6,464.9	17.2	20.3	-90.29	327.4	-726.8	318.8	288.0	30.83	10.343		
6,600.0	6,564.9	6,631.7	6,564.9	17.4	20.5	-90.29	327.4	-726.8	318.8	287.6	31.22	10.213		
6,700.0	6,664.9	6,731.7	6,664.9	17.6	20.6	-90.29	327.4	-726.8	318.8	287.2	31.61	10.085		
6,800.0	6,764.9	6,831.7	6,764.9	17.8	20.8	-90.29	327.4	-726.8	318.8	286.8	32.01	9.960		
6,900.0	6,864.9	6,931.7	6,864.9	17.9	20.9	-90.29	327.4	-726.8	318.8	286.4	32.41	9.838		
6,965.0	6,929.9	6,996.6	6,929.9	18.1	21.1	95.27	327.4	-726.8	318.9	285.6	33.27	9.585		
7,000.0	6,964.9	7,031.7	6,964.9	18.1	21.1	95.25	327.4	-726.8	318.8	285.4	33.41	9.544		
7,100.0	7,064.5	7,131.3	7,064.5	18.2	21.3	96.54	327.4	-726.8	319.6	286.1	33.53	9.531		
7,200.0	7,162.1	7,228.9	7,162.1	18.3	21.4	99.98	327.4	-726.8	322.8	289.5	33.33	9.686		
7,300.0	7,255.8	7,335.1	7,255.8	18.3	21.5	104.70	320.3	-726.2	329.2	296.3	32.83	10.025		
7,400.0	7,343.7	7,447.0	7,377.1	18.2	21.6	109.11	296.0	-723.8	337.4	305.2	32.20	10.480		
7,500.0	7,424.1	7,564.5	7,486.1	18.1	21.5	113.07	252.7	-719.7	346.8	315.4	31.42	11.038		
7,600.0	7,495.5	7,687.9	7,591.3	18.0	21.4	116.50	188.8	-713.5	356.5	326.0	30.56	11.667		
7,700.0	7,556.4	7,817.1	7,687.9	17.9	21.3	119.29	103.7	-705.3	365.6	335.8	29.73	12.295		
7,800.0	7,605.8	7,951.3	7,770.3	17.9	21.1	121.40	-1.5	-695.2	373.1	343.9	29.13	12.805		
7,900.0	7,642.5	8,089.6	7,833.1	17.9	21.1	122.75	-123.9	-683.5	378.2	349.2	29.00	13.042		
8,000.0	7,666.0	8,230.2	7,871.6	18.4	21.2	123.30	-258.3	-670.6	380.5	350.9	29.56	12.872		
8,100.0	7,675.7	8,366.2	7,883.1	19.2	21.6	123.09	-393.0	-657.6	379.7	348.9	30.82	12.322		
8,123.0	7,676.3	8,389.2	7,883.2	19.4	21.8	123.03	-415.9	-655.4	379.5	348.4	31.13	12.190		
8,200.0	7,675.4	8,465.2	7,883.6	20.0	22.3	123.20	-491.6	-648.2	380.2	348.0	32.18	11.813		
8,300.0	7,675.9	8,565.2	7,884.1	21.1	23.2	123.21	-591.1	-638.7	380.1	346.1	34.02	11.174		
8,400.0	7,676.4	8,665.2	7,884.7	22.3	24.2	123.22	-690.7	-629.2	380.1	344.0	36.08	10.534		
8,500.0	7,677.0	8,765.2	7,885.2	23.6	25.4	123.23	-790.2	-619.7	380.1	341.7	38.34	9.914		
8,600.0	7,677.5	8,865.2	7,885.8	25.0	26.7	123.24	-889.7	-610.2	380.0	339.3	40.75	9.326		
8,700.0	7,678.0	8,965.2	7,886.3	26.4	28.1	123.25	-989.3	-600.7	380.0	336.7	43.30	8.777		
8,800.0	7,678.5	9,065.2	7,886.9	28.0	29.5	123.26	-1,088.8	-591.2	380.0	334.0	45.95	8.269		
8,900.0	7,679.0	9,165.2	7,887.4	29.5	31.0	123.27	-1,188.4	-581.7	379.9	331.2	48.70	7.802		
9,000.0	7,679.5	9,265.2	7,888.0	31.1	32.6	123.28	-1,287.9	-572.2	379.9	328.4	51.52	7.374		
9,100.0	7,680.0	9,365.2	7,888.5	32.8	34.2	123.29	-1,387.5	-562.7	379.9	325.5	54.41	6.982		
9,200.0	7,680.6	9,465.2	7,889.1	34.5	35.8	123.30	-1,487.0	-553.2	379.8	322.5	57.35	6.623		
9,300.0	7,681.1	9,565.2	7,889.6	36.2	37.5	123.31	-1,586.6	-543.7	379.8	319.5	60.34	6.294		
9,400.0	7,681.6	9,665.2	7,890.2	37.9	39.2	123.32	-1,686.1	-534.3	379.8	316.4	63.37	5.993		
9,500.0	7,682.1	9,765.2	7,890.7	39.7	40.9	123.33	-1,785.7	-524.8	379.7	313.3	66.44	5.716		
9,600.0	7,682.6	9,865.2	7,891.3	41.5	42.6	123.33	-1,885.2	-515.3	379.7	310.2	69.53	5.461		
9,700.0	7,683.1	9,965.2	7,891.8	43.3	44.4	123.34	-1,984.8	-505.8	379.7	307.0	72.65	5.226		
9,800.0	7,683.6	10,065.2	7,892.3	45.1	46.2	123.35	-2,084.3	-496.3	379.6	303.8	75.79	5.009		
9,900.0	7,684.1	10,165.2	7,892.9	46.9	48.0	123.36	-2,183.9	-486.8	379.6	300.6	78.96	4.808		
10,000.0	7,684.7	10,265.2	7,893.4	48.7	49.8	123.37	-2,283.4	-477.3	379.6	297.4	82.14	4.621		
10,100.0	7,685.2	10,365.2	7,894.0	50.6	51.6	123.38	-2,382.9	-467.8	379.5	294.2	85.33	4.448		

CC - Min centre to center distance or convergent point, SF - min separation factor, ES - min ellipse separation

<b>Company:</b>	Clear Creek Resource Partners	<b>Local Co-ordinate Reference:</b>	Well Salt Ranch Fee 202-1015H
<b>Project:</b>	SEC.10-T11N-R64W	<b>TVD Reference:</b>	WELL @ 5456.0ft (Original Well Elev)
<b>Reference Site:</b>	Salt Ranch East 10 Pad Sec.10-T11N-R64W	<b>MD Reference:</b>	WELL @ 5456.0ft (Original Well Elev)
<b>Site Error:</b>	0.0 ft	<b>North Reference:</b>	True
<b>Reference Well:</b>	Salt Ranch Fee 202-1015H	<b>Survey Calculation Method:</b>	Minimum Curvature
<b>Well Error:</b>	0.0 ft	<b>Output errors are at</b>	2.00 sigma
<b>Reference Wellbore</b>	Wellbore #1	<b>Database:</b>	US_EDM
<b>Reference Design:</b>	Plan #2 (10-11-17)	<b>Offset TVD Reference:</b>	Offset Datum

Offset Design													Offset Site Error:	0.0 ft
Survey Program: 0-MWD													Offset Well Error:	0.0 ft
Reference		Offset		Semi Major Axis			Distance							Warning
Measured Depth (ft)	Vertical Depth (ft)	Measured Depth (ft)	Vertical Depth (ft)	Reference (ft)	Offset (ft)	Highside Toolface (°)	Offset Wellbore Centre +N/-S (ft)	+E/-W (ft)	Between Centres (ft)	Between Ellipses (ft)	Minimum Separation (ft)	Separation Factor		
10,200.0	7,685.7	10,465.2	7,894.5	52.4	53.4	123.39	-2,482.5	-458.3	379.5	291.0	88.54	4.286		
10,300.0	7,686.2	10,565.2	7,895.1	54.3	55.3	123.40	-2,582.0	-448.8	379.5	287.7	91.76	4.135		
10,400.0	7,686.7	10,665.2	7,895.6	56.2	57.1	123.41	-2,681.6	-439.3	379.4	284.4	94.99	3.994		
10,500.0	7,687.2	10,765.2	7,896.2	58.0	59.0	123.42	-2,781.1	-429.8	379.4	281.2	98.24	3.862		
10,600.0	7,687.7	10,865.2	7,896.7	59.9	60.8	123.43	-2,880.7	-420.3	379.4	277.9	101.49	3.738		
10,700.0	7,688.2	10,965.2	7,897.3	61.8	62.7	123.44	-2,980.2	-410.8	379.3	274.6	104.75	3.621		
10,800.0	7,688.8	11,065.2	7,897.8	63.7	64.6	123.45	-3,079.8	-401.3	379.3	271.3	108.01	3.512		
10,900.0	7,689.3	11,165.2	7,898.4	65.6	66.4	123.46	-3,179.3	-391.8	379.3	268.0	111.29	3.408		
11,000.0	7,689.8	11,265.2	7,898.9	67.5	68.3	123.47	-3,278.9	-382.3	379.2	264.7	114.56	3.310		
11,100.0	7,690.3	11,365.2	7,899.5	69.4	70.2	123.48	-3,378.4	-372.8	379.2	261.4	117.85	3.218		
11,200.0	7,690.8	11,465.2	7,900.0	71.3	72.1	123.49	-3,478.0	-363.3	379.2	258.0	121.14	3.130		
11,300.0	7,691.3	11,565.2	7,900.6	73.2	74.0	123.50	-3,577.5	-353.8	379.1	254.7	124.43	3.047		
11,400.0	7,691.8	11,665.2	7,901.1	75.1	75.9	123.51	-3,677.0	-344.3	379.1	251.4	127.72	2.968		
11,500.0	7,692.3	11,765.2	7,901.6	77.1	77.8	123.52	-3,776.6	-334.8	379.1	248.0	131.03	2.893		
11,600.0	7,692.9	11,865.2	7,902.2	79.0	79.7	123.52	-3,876.1	-325.3	379.0	244.7	134.33	2.822		
11,700.0	7,693.4	11,965.2	7,902.7	80.9	81.6	123.53	-3,975.7	-315.8	379.0	241.4	137.64	2.754		
11,800.0	7,693.9	12,065.2	7,903.3	82.8	83.6	123.54	-4,075.2	-306.3	379.0	238.0	140.95	2.689		
11,900.0	7,694.4	12,165.2	7,903.8	84.8	85.5	123.55	-4,174.8	-296.8	378.9	234.7	144.26	2.627		
12,000.0	7,694.9	12,265.2	7,904.4	86.7	87.4	123.56	-4,274.3	-287.3	378.9	231.3	147.57	2.568		
12,100.0	7,695.4	12,365.2	7,904.9	88.6	89.3	123.57	-4,373.9	-277.8	378.9	228.0	150.89	2.511		
12,200.0	7,695.9	12,465.2	7,905.5	90.6	91.2	123.58	-4,473.4	-268.3	378.8	224.6	154.21	2.457		
12,300.0	7,696.4	12,565.2	7,906.0	92.5	93.2	123.59	-4,573.0	-258.8	378.8	221.3	157.53	2.405		
12,400.0	7,697.0	12,665.2	7,906.6	94.4	95.1	123.60	-4,672.5	-249.3	378.8	217.9	160.85	2.355		
12,500.0	7,697.5	12,765.2	7,907.1	96.4	97.0	123.61	-4,772.1	-239.8	378.7	214.6	164.17	2.307		
12,600.0	7,698.0	12,865.2	7,907.7	98.3	99.0	123.62	-4,871.6	-230.3	378.7	211.2	167.50	2.261		
12,700.0	7,698.5	12,965.2	7,908.2	100.3	100.9	123.63	-4,971.2	-220.9	378.7	207.9	170.82	2.217		
12,800.0	7,699.0	13,065.2	7,908.8	102.2	102.8	123.64	-5,070.7	-211.4	378.6	204.5	174.15	2.174		
12,806.7	7,699.0	13,071.9	7,908.8	102.3	103.0	123.64	-5,077.4	-210.7	378.6	204.2	174.38	2.171		
12,900.0	7,699.5	13,156.1	7,909.3	104.1	104.4	123.59	-5,161.3	-203.9	379.1	201.7	177.40	2.137		
13,000.0	7,700.0	13,246.2	7,909.7	105.7	105.9	123.54	-5,251.2	-199.4	379.5	199.2	180.38	2.104		
13,100.0	7,700.5	13,336.2	7,910.2	107.4	107.4	123.52	-5,341.3	-197.6	379.7	196.6	183.10	2.074		
13,174.1	7,700.9	13,403.5	7,910.6	108.6	108.5	123.50	-5,408.6	-198.2	379.9	194.8	185.13	2.052		
13,200.0	7,701.1	13,429.5	7,910.7	109.1	109.0	123.53	-5,434.5	-198.7	379.6	193.8	185.85	2.043		
13,300.0	7,701.6	13,529.5	7,911.3	110.9	110.9	123.52	-5,534.5	-200.4	379.8	190.7	189.11	2.008		
13,400.0	7,702.1	13,629.5	7,911.8	112.8	112.8	123.51	-5,634.5	-202.2	379.9	187.5	192.38	1.975		
13,500.0	7,702.6	13,729.5	7,912.4	114.7	114.6	123.50	-5,734.5	-204.0	380.0	184.4	195.65	1.942		
13,600.0	7,703.1	13,829.5	7,912.9	116.6	116.5	123.50	-5,834.5	-205.8	380.1	181.2	198.91	1.911		
13,700.0	7,703.6	13,929.5	7,913.4	118.5	118.4	123.49	-5,934.4	-207.6	380.3	178.1	202.19	1.881		
13,800.0	7,704.1	14,029.5	7,914.0	120.4	120.3	123.48	-6,034.4	-209.4	380.4	174.9	205.46	1.851		
13,900.0	7,704.7	14,129.5	7,914.5	122.3	122.2	123.48	-6,134.4	-211.2	380.5	171.8	208.74	1.823		
14,000.0	7,705.2	14,229.5	7,915.1	124.2	124.1	123.47	-6,234.4	-213.0	380.6	168.6	212.01	1.795		
14,100.0	7,705.7	14,329.5	7,915.6	126.1	126.0	123.46	-6,334.4	-214.7	380.7	165.5	215.29	1.768		
14,200.0	7,706.2	14,429.5	7,916.1	127.9	127.9	123.45	-6,434.4	-216.5	380.9	162.3	218.57	1.742		
14,300.0	7,706.7	14,529.5	7,916.7	129.8	129.8	123.45	-6,534.3	-218.3	381.0	159.1	221.86	1.717		
14,400.0	7,707.2	14,629.5	7,917.2	131.7	131.7	123.44	-6,634.3	-220.1	381.1	156.0	225.14	1.693		
14,500.0	7,707.7	14,729.5	7,917.8	133.6	133.6	123.43	-6,734.3	-221.9	381.2	152.8	228.43	1.669		
14,600.0	7,708.2	14,829.5	7,918.3	135.5	135.5	123.42	-6,834.3	-223.7	381.4	149.6	231.72	1.646		
14,700.0	7,708.8	14,929.5	7,918.8	137.4	137.4	123.42	-6,934.3	-225.5	381.5	146.5	235.01	1.623		
14,800.0	7,709.3	15,029.5	7,919.4	139.3	139.2	123.41	-7,034.2	-227.3	381.6	143.3	238.30	1.601		
14,900.0	7,709.8	15,129.5	7,919.9	141.2	141.1	123.40	-7,134.2	-229.1	381.7	140.1	241.59	1.580		
15,000.0	7,710.3	15,229.5	7,920.5	143.1	143.0	123.40	-7,234.2	-230.8	381.8	137.0	244.89	1.559		
15,100.0	7,710.8	15,329.5	7,921.0	145.0	144.9	123.39	-7,334.2	-232.6	382.0	133.8	248.18	1.539		

CC - Min centre to center distance or convergent point, SF - min separation factor, ES - min ellipse separation

<b>Company:</b>	Clear Creek Resource Partners	<b>Local Co-ordinate Reference:</b>	Well Salt Ranch Fee 202-1015H
<b>Project:</b>	SEC.10-T11N-R64W	<b>TVD Reference:</b>	WELL @ 5456.0ft (Original Well Elev)
<b>Reference Site:</b>	Salt Ranch East 10 Pad Sec.10-T11N-R64W	<b>MD Reference:</b>	WELL @ 5456.0ft (Original Well Elev)
<b>Site Error:</b>	0.0 ft	<b>North Reference:</b>	True
<b>Reference Well:</b>	Salt Ranch Fee 202-1015H	<b>Survey Calculation Method:</b>	Minimum Curvature
<b>Well Error:</b>	0.0 ft	<b>Output errors are at</b>	2.00 sigma
<b>Reference Wellbore</b>	Wellbore #1	<b>Database:</b>	US_EDM
<b>Reference Design:</b>	Plan #2 (10-11-17)	<b>Offset TVD Reference:</b>	Offset Datum

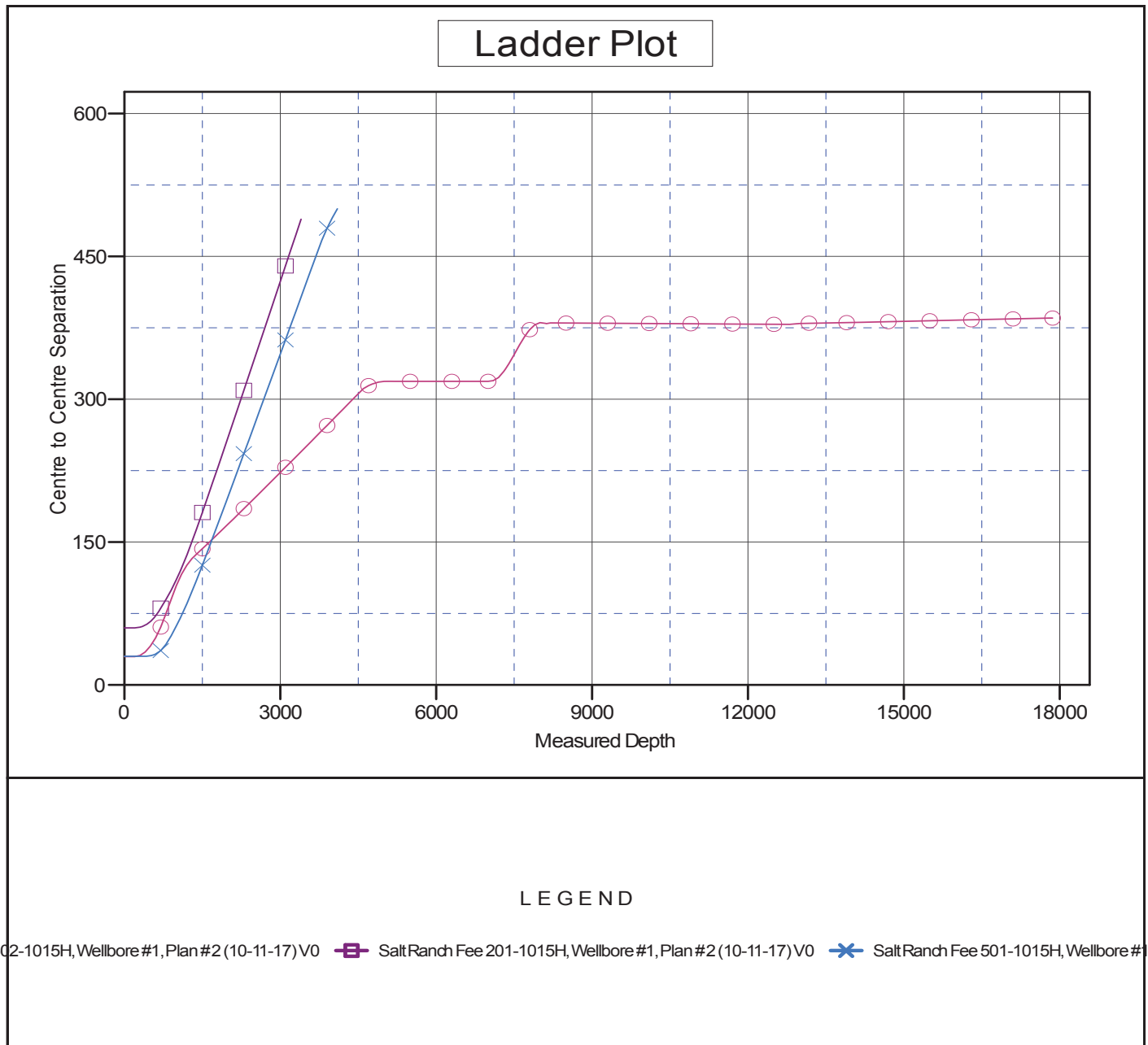
Offset Design													Salt Ranch East 10 Pad Sec.10-T11N-R64W - Salt Ranch Fee 502-1015H - Wellbore #1 - Plan #2 (10-1)		Offset Site Error:		0.0 ft
Survey Program:				0-MWD									Offset Well Error:		0.0 ft		
Reference		Offset		Semi Major Axis			Distance							Warning			
Measured Depth	Vertical Depth	Measured Depth	Vertical Depth	Reference	Offset	Highside Toolface	Offset Wellbore Centre		Between Centres	Between Ellipses	Minimum Separation	Separation Factor					
(ft)	(ft)	(ft)	(ft)	(ft)	(ft)	(°)	+N/-S (ft)	+E/-W (ft)	(ft)	(ft)	(ft)						
15,200.0	7,711.3	15,429.5	7,921.6	146.9	146.8	123.38	-7,434.2	-234.4	382.1	130.6	251.48	1.519					
15,300.0	7,711.8	15,529.5	7,922.1	148.8	148.7	123.37	-7,534.2	-236.2	382.2	127.4	254.78	1.500					
15,400.0	7,712.4	15,629.5	7,922.6	150.7	150.6	123.37	-7,634.1	-238.0	382.3	124.3	258.08	1.481 Level 3					
15,500.0	7,712.9	15,729.5	7,923.2	152.6	152.6	123.36	-7,734.1	-239.8	382.5	121.1	261.38	1.463 Level 3					
15,600.0	7,713.4	15,829.5	7,923.7	154.5	154.5	123.35	-7,834.1	-241.6	382.6	117.9	264.68	1.445 Level 3					
15,700.0	7,713.9	15,929.5	7,924.3	156.4	156.4	123.35	-7,934.1	-243.4	382.7	114.7	267.98	1.428 Level 3					
15,800.0	7,714.4	16,029.5	7,924.8	158.3	158.3	123.34	-8,034.1	-245.1	382.8	111.5	271.29	1.411 Level 3					
15,900.0	7,714.9	16,129.5	7,925.3	160.3	160.2	123.33	-8,134.1	-246.9	382.9	108.4	274.59	1.395 Level 3					
16,000.0	7,715.4	16,229.5	7,925.9	162.2	162.1	123.32	-8,234.0	-248.7	383.1	105.2	277.90	1.378 Level 3					
16,100.0	7,715.9	16,329.5	7,926.4	164.1	164.0	123.32	-8,334.0	-250.5	383.2	102.0	281.21	1.363 Level 3					
16,200.0	7,716.5	16,429.5	7,927.0	166.0	165.9	123.31	-8,434.0	-252.3	383.3	98.8	284.52	1.347 Level 3					
16,300.0	7,717.0	16,529.5	7,927.5	167.9	167.8	123.30	-8,534.0	-254.1	383.4	95.6	287.83	1.332 Level 3					
16,400.0	7,717.5	16,629.5	7,928.0	169.8	169.7	123.30	-8,634.0	-255.9	383.6	92.4	291.14	1.317 Level 3					
16,500.0	7,718.0	16,729.5	7,928.6	171.7	171.6	123.29	-8,733.9	-257.7	383.7	89.2	294.45	1.303 Level 3					
16,600.0	7,718.5	16,829.5	7,929.1	173.6	173.5	123.28	-8,833.9	-259.5	383.8	86.0	297.77	1.289 Level 3					
16,700.0	7,719.0	16,929.5	7,929.7	175.5	175.4	123.27	-8,933.9	-261.2	383.9	82.8	301.08	1.275 Level 3					
16,800.0	7,719.5	17,029.5	7,930.2	177.4	177.3	123.27	-9,033.9	-263.0	384.0	79.7	304.39	1.262 Level 3					
16,900.0	7,720.1	17,129.5	7,930.7	179.3	179.2	123.26	-9,133.9	-264.8	384.2	76.5	307.71	1.248 Level 2					
17,000.0	7,720.6	17,229.5	7,931.3	181.2	181.1	123.25	-9,233.9	-266.6	384.3	73.3	311.03	1.236 Level 2					
17,100.0	7,721.1	17,329.5	7,931.8	183.1	183.1	123.25	-9,333.8	-268.4	384.4	70.1	314.35	1.223 Level 2					
17,200.0	7,721.6	17,429.5	7,932.4	185.1	185.0	123.24	-9,433.8	-270.2	384.5	66.9	317.66	1.211 Level 2					
17,300.0	7,722.1	17,529.5	7,932.9	187.0	186.9	123.23	-9,533.8	-272.0	384.7	63.7	320.98	1.198 Level 2					
17,400.0	7,722.6	17,629.5	7,933.4	188.9	188.8	123.23	-9,633.8	-273.8	384.8	60.5	324.30	1.186 Level 2					
17,500.0	7,723.1	17,729.5	7,934.0	190.8	190.7	123.22	-9,733.8	-275.5	384.9	57.3	327.62	1.175 Level 2					
17,600.0	7,723.6	17,829.5	7,934.5	192.7	192.6	123.21	-9,833.8	-277.3	385.0	54.1	330.95	1.163 Level 2					
17,700.0	7,724.2	17,929.5	7,935.1	194.6	194.5	123.20	-9,933.7	-279.1	385.1	50.9	334.27	1.152 Level 2					
17,800.0	7,724.7	18,029.5	7,935.6	196.5	196.4	123.20	-10,033.7	-280.9	385.3	47.7	337.59	1.141 Level 2					
17,863.7	7,725.0	18,093.2	7,936.0	197.7	197.6	123.19	-10,097.5	-282.1	385.3	45.6	339.71	1.134 Level 2, SF					



<b>Company:</b>	Clear Creek Resource Partners	<b>Local Co-ordinate Reference:</b>	Well Salt Ranch Fee 202-1015H
<b>Project:</b>	SEC.10-T11N-R64W	<b>TVD Reference:</b>	WELL @ 5456.0ft (Original Well Elev)
<b>Reference Site:</b>	Salt Ranch East 10 Pad Sec.10-T11N-R64W	<b>MD Reference:</b>	WELL @ 5456.0ft (Original Well Elev)
<b>Site Error:</b>	0.0 ft	<b>North Reference:</b>	True
<b>Reference Well:</b>	Salt Ranch Fee 202-1015H	<b>Survey Calculation Method:</b>	Minimum Curvature
<b>Well Error:</b>	0.0 ft	<b>Output errors are at</b>	2.00 sigma
<b>Reference Wellbore</b>	Wellbore #1	<b>Database:</b>	US_EDM
<b>Reference Design:</b>	Plan #2 (10-11-17)	<b>Offset TVD Reference:</b>	Offset Datum

Reference Depths are relative to WELL @ 5456.0ft (Original Well Elev)  
Offset Depths are relative to Offset Datum  
Central Meridian is -105.500000

Coordinates are relative to: Salt Ranch Fee 202-1015H  
Coordinate System is US State Plane 1983, Colorado Northern Zone  
Grid Convergence at Surface is: 0.63°



<b>Company:</b>	Clear Creek Resource Partners	<b>Local Co-ordinate Reference:</b>	Well Salt Ranch Fee 202-1015H
<b>Project:</b>	SEC.10-T11N-R64W	<b>TVD Reference:</b>	WELL @ 5456.0ft (Original Well Elev)
<b>Reference Site:</b>	Salt Ranch East 10 Pad Sec.10-T11N-R64W	<b>MD Reference:</b>	WELL @ 5456.0ft (Original Well Elev)
<b>Site Error:</b>	0.0 ft	<b>North Reference:</b>	True
<b>Reference Well:</b>	Salt Ranch Fee 202-1015H	<b>Survey Calculation Method:</b>	Minimum Curvature
<b>Well Error:</b>	0.0 ft	<b>Output errors are at</b>	2.00 sigma
<b>Reference Wellbore</b>	Wellbore #1	<b>Database:</b>	US_EDM
<b>Reference Design:</b>	Plan #2 (10-11-17)	<b>Offset TVD Reference:</b>	Offset Datum

Reference Depths are relative to WELL @ 5456.0ft (Original Well Elev)  
Offset Depths are relative to Offset Datum  
Central Meridian is -105.500000

Coordinates are relative to: Salt Ranch Fee 202-1015H  
Coordinate System is US State Plane 1983, Colorado Northern Zone  
Grid Convergence at Surface is: 0.63°

