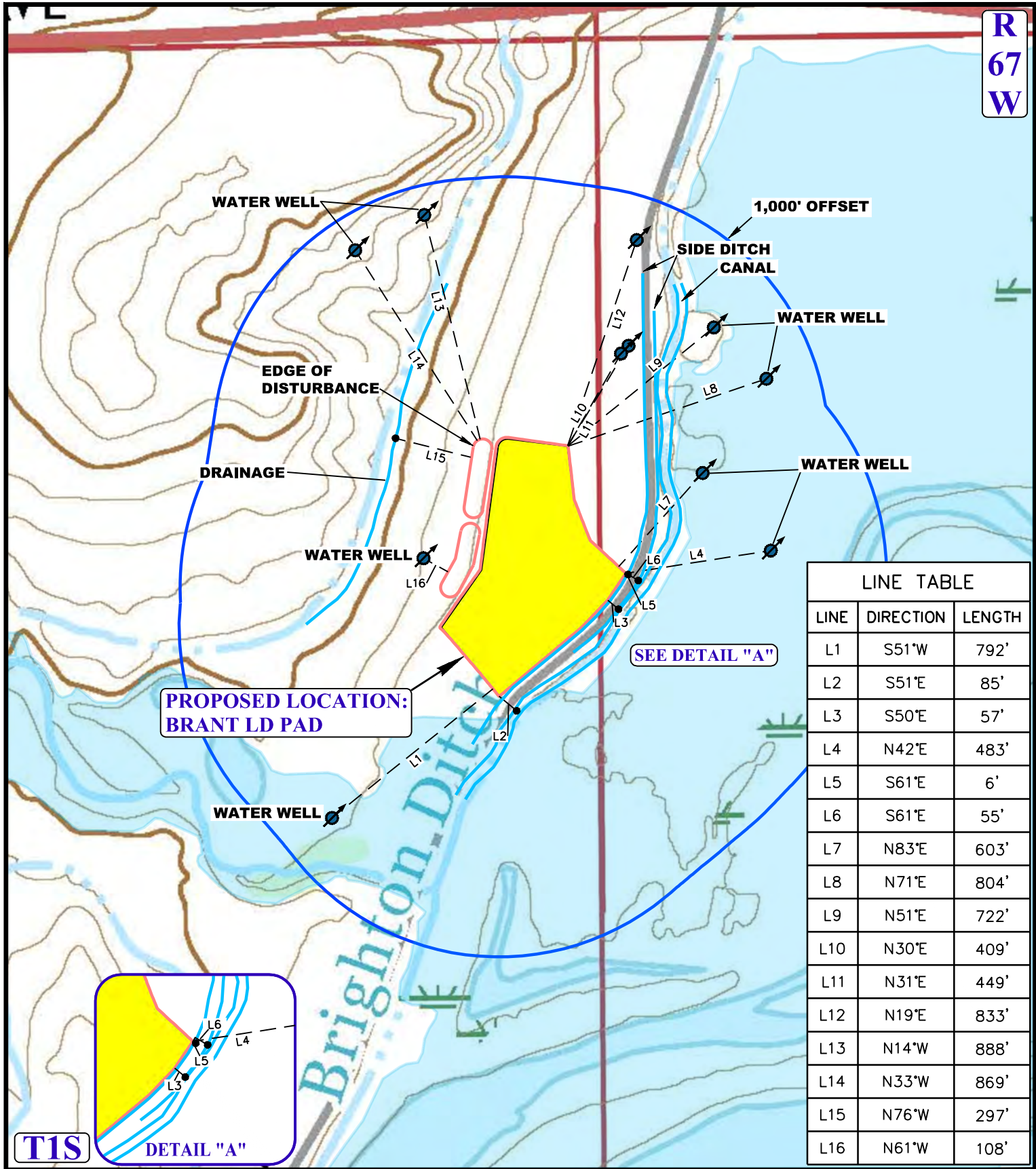


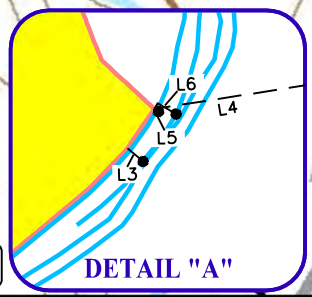
R
67
W



LINE TABLE		
LINE	DIRECTION	LENGTH
L1	S51°W	792'
L2	S51°E	85'
L3	S50°E	57'
L4	N42°E	483'
L5	S61°E	6'
L6	S61°E	55'
L7	N83°E	603'
L8	N71°E	804'
L9	N51°E	722'
L10	N30°E	409'
L11	N31°E	449'
L12	N19°E	833'
L13	N14°W	888'
L14	N33°W	869'
L15	N76°W	297'
L16	N61°W	108'

**PROPOSED LOCATION:
BRANT LD PAD**

SEE DETAIL "A"



T1S

LEGEND:

- EXISTING DRAINAGE
- 1000' OFFSET BOUNDARY
- EDGE OF DISTURBANCE
- FLOOD PLAINS
- WATER WELLS



UELS, LLC
Corporate Office * 85 South 200 East
Vernal, UT 84078 * (435) 789-1017



GREAT WESTERN OPERATING COMPANY

BRANT LD PAD
SE 1/4 NE 1/4, SECTION 11, T1S, R67W, 6th P.M.
ADAMS COUNTY, COLORADO

SURVEYED BY	C.M., D.N.	02-14-17	SCALE
DRAWN BY	J.L.G.	06-30-17	1 : 6,000
HYDROLOGY MAP			TOPO W