

**PROPOSED LOCATION:
BRANT LD PAD**

**RIVERDALE RD.
0.3 MI. +/-**

**1.1 MI. +/-
160TH AVE.**

**R 68
W**

**R 67
W**

**R 67
W**

**R 66
W**

T1N

T1N

T1S

T1S

T2S

LEGEND:

 **PROPOSED LOCATION**



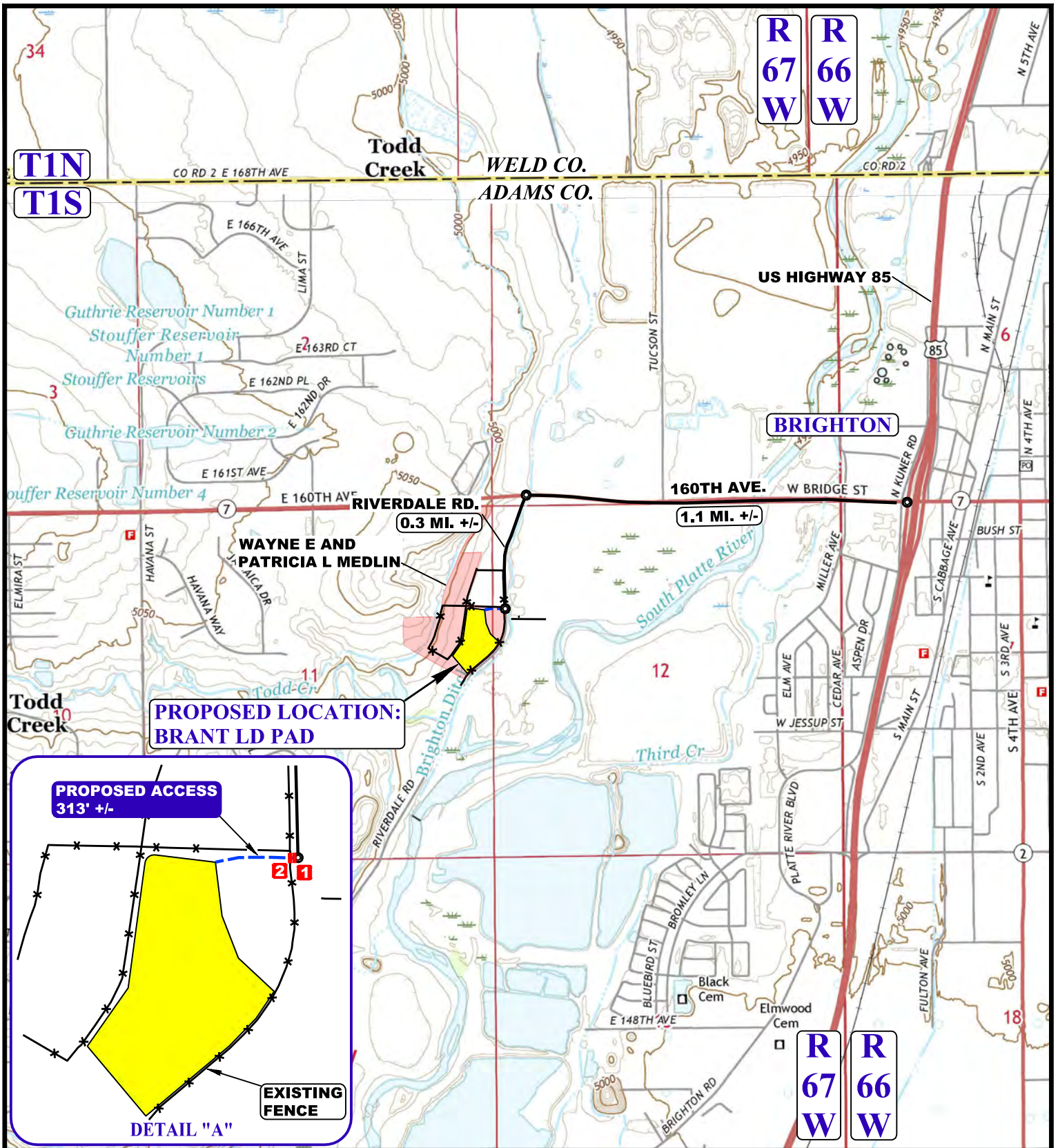
GREAT WESTERN OPERATING COMPANY

**BRANT LD PAD
SE 1/4 NE 1/4, SECTION 11, T1S, R67W, 6th P.M.
ADAMS COUNTY, COLORADO**



UELS, LLC
Corporate Office * 85 South 200 East
Vernal, UT 84078 * (435) 789-1017

SURVEYED BY	C.M., D.N.	02-14-17	SCALE
DRAWN BY	J.L.G.	06-30-17	1 : 100,000
ACCESS ROAD MAP			TOPO A



NOTE: PARCEL DATA SHOWN HAS BEEN OBTAINED FROM VARIOUS SOURCES AND SHOULD BE USED FOR MAPPING, GRAPHIC AND PLANNING PURPOSES ONLY. NO WARRANTY IS MADE BY UINTAH ENGINEERING AND LAND SURVEYING (UELS) FOR ACCURACY OF THE PARCEL DATA.

LEGEND:

- EXISTING ROAD
- PROPOSED ROAD
- INSTALL 18" CULVERT
- INSTALL CATTLE GUARD



GREAT WESTERN OPERATING COMPANY

BRANT LD PAD
 SE 1/4 NE 1/4, SECTION 11, T1S, R67W, 6th P.M.
 ADAMS COUNTY, COLORADO



UELS, LLC
 Corporate Office * 85 South 200 East
 Vernal, UT 84078 * (435) 789-1017

SURVEYED BY	C.M., D.N.	02-14-17	SCALE
DRAWN BY	J.L.G.	06-30-17	1 : 24,000
ACCESS ROAD MAP			TOPO B