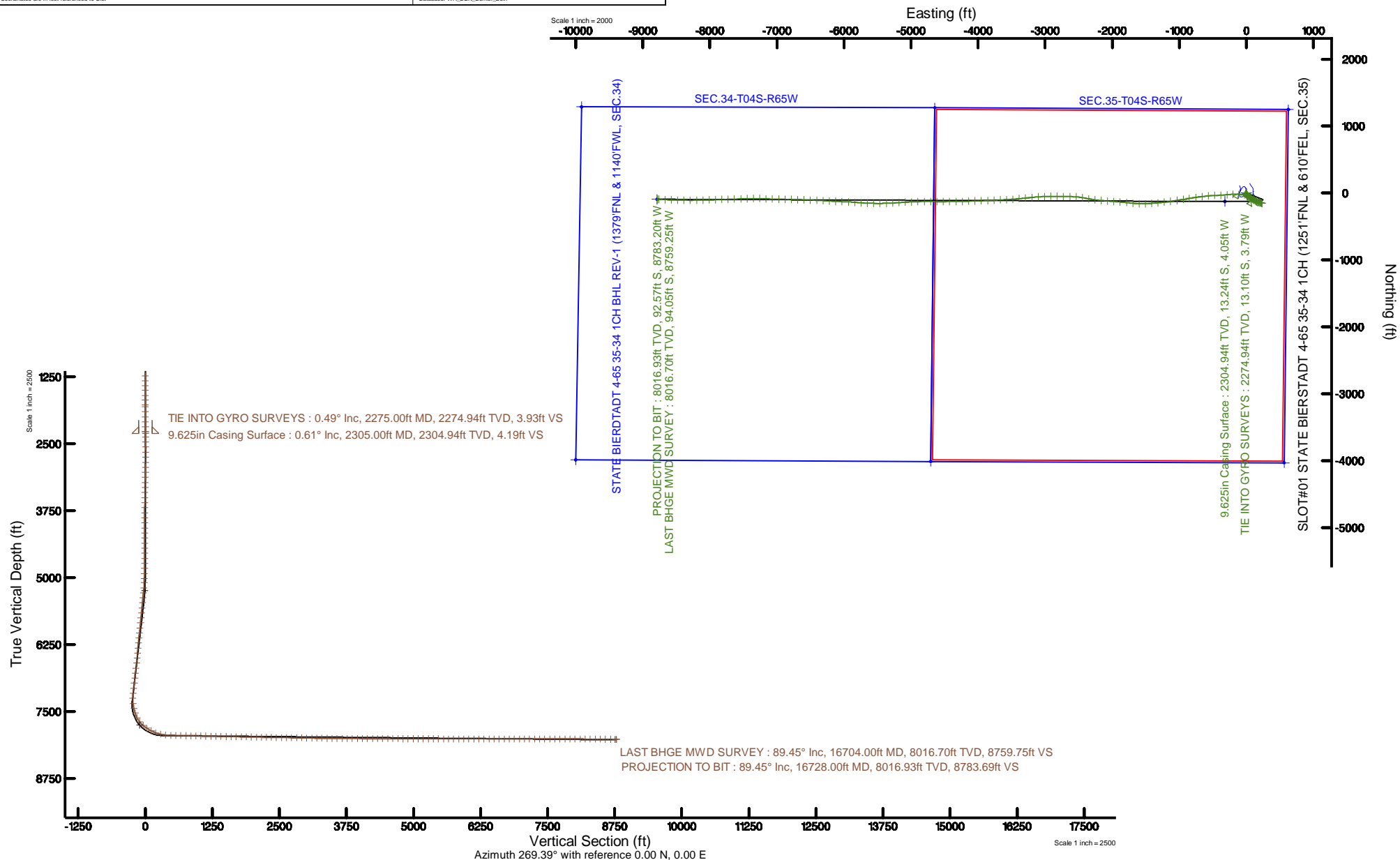


Burlington Resources

Location: COLORADO Slot: SLOT#01 STATE BIERSTADT 4-65 35-34 1CH (1251'FNL & 610'FEL, SEC.35)
 Field: ARAPAHOE COUNTY (NAD83/TN) Well: STATE BIERSTADT 4-65 35-34 1CH
 Facility: SEC.35-T04S-R65W Wellbore: STATE BIERSTADT 4-65 35-34 1CH PWB

Plot reference wellpath is STATE BIERSTADT 4-65 35-34 1CH (REV-A,0) PWP	Grid System: NAD83 / Lambert Colorado SP, Central Zone (602), US feet
True vertical depths are referenced to H&P 448 (24KB) (RKB)	North Reference: True north
Measured depths are referenced to H&P 448 (24KB) (RKB)	Scale: True distance
H&P 448 (24KB) (RKB) to Mean Sea Level: 5896.3 feet	Depths are in feet
Mean Sea Level to Mud line (At Slot: SLOT#01 STATE BIERSTADT 4-65 35-34 1CH (1251'FNL & 610'FEL, SEC.35)): 0 feet	Created by: bensjacj on 2017-06-30
Coordinates are in feet referenced to Slot	Database: WA_DEN_Denver_Delhi

BURLINGTON RESOURCES



REFERENCE WELLPATH IDENTIFICATION

Operator	Burlington Resources	Slot	SLOT#01 STATE BIERSTADT 4-65 35-34 1CH (1251'FNL & 610'FEL, SEC.35)
Area	COLORADO	Well	STATE BIERSTADT 4-65 35-34 1CH
Field	ARAPAHOE COUNTY (NAD83/TN)	Wellbore	STATE BIERSTADT 4-65 35-34 1CH AWB
Facility	SEC.35-T04S-R65W		

REPORT SETUP INFORMATION

Projection System	NAD83 / Lambert Colorado SP, Central Zone (502), US feet	Software System	WellArchitect® 5.1
North Reference	True	User	Bensjacj
Scale	0.999984	Report Generated	08/30/2017 at 10:24 AM
Convergence at slot	0.55° East	Database/Source file	WA_DEN_Denver_Defn/STATE_BIERSTADT_4-65_35-34_1CH_AWP.xml

WELLPATH LOCATION

	Local coordinates		Grid coordinates		Geographic coordinates	
	North[ft]	East[ft]	Easting[US ft]	Northing[US ft]	Latitude	Longitude
Slot Location	0.00	0.00	3246487.44	1667887.01	39°39'49.990"N	104°37'28.020"W
Facility Reference Pt			3246487.44	1667887.01	39°39'49.990"N	104°37'28.020"W
Field Reference Pt			3256721.09	1679994.75	39°41'48.650"N	104°35'15.610"W

WELLPATH DATUM

Calculation method	Minimum curvature	H&P 448 (24'KB) (RKB) to Facility Vertical Datum	5896.30ft
Horizontal Reference Pt	Slot	H&P 448 (24'KB) (RKB) to Mean Sea Level	5896.30ft
Vertical Reference Pt	H&P 448 (24'KB) (RKB)	H&P 448 (24'KB) (RKB) to Mud Line at Slot (SLOT#01 STATE BIERSTADT 4-65 35-34 1CH (1251'FNL & 610'FEL, SEC.35))	5896.30ft
MD Reference Pt	H&P 448 (24'KB) (RKB)	Section Origin	N 0.00, E 0.00 ft
Field Vertical Reference	Mean Sea Level	Section Azimuth	269.39°

REFERENCE WELLPATH IDENTIFICATION			
Operator	Burlington Resources	Slot	SLOT#01 STATE BIERSTADT 4-65 35-34 1CH (1251'FNL & 610'FEL, SEC.35)
Area	COLORADO	Well	STATE BIERSTADT 4-65 35-34 1CH
Field	ARAPAHOE COUNTY (NAD83/TN)	Wellbore	STATE BIERSTADT 4-65 35-34 1CH AWB
Facility	SEC.35-T04S-R65W		

WELLPATH DATA (155 stations)								
MD [ft]	Inclination [°]	Azimuth [°]	TVD [ft]	Vert Sect [ft]	North [ft]	East [ft]	DLS [°/100ft]	Comments
2275.00	0.490	237.990	2274.94	3.93	-13.10	-3.79	0.15	TIE INTO GYRO SURVEYS
2370.00	0.900	252.090	2369.94	4.99	-13.55	-4.85	0.46	
2464.00	0.830	247.790	2463.92	6.33	-14.03	-6.18	0.10	
2559.00	0.930	255.280	2558.91	7.71	-14.49	-7.56	0.16	
2653.00	0.840	252.190	2652.90	9.11	-14.89	-8.95	0.11	
2748.00	1.580	166.060	2747.89	9.48	-16.38	-9.30	1.83	
2843.00	1.610	108.410	2842.86	7.91	-18.07	-7.72	1.62	
2937.00	1.600	111.670	2936.82	5.45	-18.97	-5.25	0.10	
3032.00	1.490	110.260	3031.78	3.07	-19.89	-2.86	0.12	
3126.00	1.480	114.760	3125.75	0.83	-20.82	-0.61	0.12	
3221.00	1.410	117.860	3220.72	-1.31	-21.88	1.54	0.11	
3315.00	1.480	120.390	3314.69	-3.36	-23.04	3.61	0.10	
3409.00	1.450	124.370	3408.66	-5.38	-24.32	5.64	0.11	
3504.00	1.350	132.200	3503.63	-7.19	-25.75	7.46	0.23	
3598.00	1.200	152.470	3597.61	-8.44	-27.37	8.73	0.50	
3693.00	1.260	175.430	3692.59	-8.97	-29.29	9.28	0.52	
3788.00	1.230	164.700	3787.57	-9.30	-31.32	9.63	0.25	
3882.00	1.180	170.290	3881.55	-9.71	-33.24	10.06	0.14	
3976.00	1.200	176.480	3975.53	-9.91	-35.18	10.28	0.14	
4071.00	1.290	185.210	4070.50	-9.85	-37.24	10.25	0.22	
4165.00	1.160	194.030	4164.48	-9.50	-39.21	9.92	0.24	
4260.00	1.060	171.490	4259.46	-9.38	-41.02	9.82	0.47	
4354.00	0.970	178.360	4353.45	-9.52	-42.67	9.97	0.16	
4448.00	1.090	188.040	4447.43	-9.40	-44.35	9.87	0.22	
4543.00	1.260	184.970	4542.41	-9.16	-46.29	9.65	0.19	
4637.00	1.280	185.940	4636.39	-8.94	-48.36	9.45	0.03	
4732.00	1.580	90.570	4731.37	-10.13	-49.43	10.65	2.24	
4826.00	1.580	104.930	4825.34	-12.67	-49.78	13.20	0.42	
4921.00	1.590	103.990	4920.30	-15.21	-50.43	15.74	0.03	
5016.00	1.300	94.270	5015.27	-17.56	-50.83	18.10	0.40	
5092.00	2.330	79.870	5091.23	-19.94	-50.62	20.48	1.47	
5186.00	4.330	101.860	5185.07	-25.29	-51.02	25.83	2.49	
5281.00	6.610	116.770	5279.64	-33.65	-54.22	34.22	2.81	
5376.00	7.140	125.040	5373.96	-43.30	-60.07	43.94	1.18	
5470.00	6.920	128.210	5467.25	-52.46	-66.93	53.17	0.47	
5564.00	6.900	124.010	5560.57	-61.52	-73.59	62.30	0.54	
5658.00	6.860	125.570	5653.89	-70.70	-80.01	71.55	0.20	
5753.00	6.830	132.210	5748.22	-79.42	-87.11	80.35	0.83	
5848.00	6.750	117.200	5842.56	-88.51	-93.46	89.50	1.86	
5942.00	6.620	119.050	5935.92	-98.10	-98.61	99.15	0.27	
6037.00	6.700	117.290	6030.28	-107.76	-103.81	108.86	0.23	
6132.00	6.810	114.920	6124.62	-117.74	-108.73	118.90	0.32	
6226.00	6.690	121.410	6217.97	-127.41	-113.93	128.62	0.82	
6320.00	6.690	134.750	6311.33	-135.90	-120.64	137.18	1.65	
6415.00	6.670	131.590	6405.69	-143.88	-128.19	145.24	0.39	

REFERENCE WELLPATH IDENTIFICATION			
Operator	Burlington Resources	Slot	SLOT#01 STATE BIERSTADT 4-65 35-34 1CH (1251'FNL & 610'FEL, SEC.35)
Area	COLORADO	Well	STATE BIERSTADT 4-65 35-34 1CH
Field	ARAPAHOE COUNTY (NAD83/TN)	Wellbore	STATE BIERSTADT 4-65 35-34 1CH AWB
Facility	SEC.35-T04S-R65W		

WELLPATH DATA (155 stations)								
MD [ft]	Inclination [°]	Azimuth [°]	TVD [ft]	Vert Sect [ft]	North [ft]	East [ft]	DLS [°/100ft]	Comments
6509.00	6.700	127.210	6499.05	-152.25	-135.13	153.69	0.54	
6604.00	6.740	104.860	6593.41	-162.00	-139.92	163.49	2.74	
6698.00	6.170	89.750	6686.82	-172.37	-141.31	173.88	1.90	
6793.00	6.720	98.470	6781.23	-182.97	-142.10	184.48	1.18	
6887.00	6.670	100.730	6874.58	-193.75	-143.93	195.29	0.29	
6982.00	6.620	106.610	6968.95	-204.39	-146.52	205.95	0.72	
7077.00	6.730	107.710	7063.30	-214.91	-149.78	216.50	0.18	
7171.00	6.650	102.680	7156.66	-225.43	-152.65	227.06	0.63	
7266.00	1.790	53.360	7251.40	-231.99	-152.98	233.62	5.95	
7360.00	7.610	285.120	7345.15	-227.18	-150.47	228.78	9.39	
7455.00	14.150	303.020	7438.41	-211.43	-142.49	212.95	7.67	
7549.00	22.250	304.020	7527.64	-187.18	-126.25	188.53	8.62	
7643.00	30.500	302.080	7611.78	-152.40	-103.58	153.50	8.82	
7738.00	41.290	296.250	7688.65	-103.99	-76.83	104.81	11.90	
7833.00	50.270	290.930	7754.86	-41.90	-49.85	42.43	10.26	
7927.00	57.500	281.000	7810.32	30.77	-29.31	-30.46	11.47	
8022.00	63.650	273.910	7857.01	112.60	-18.75	-112.41	9.17	
8116.00	69.110	266.320	7894.71	198.61	-18.69	-198.42	9.40	
8210.00	76.490	264.630	7922.49	288.13	-25.80	-287.87	8.04	
8305.00	84.820	267.300	7937.90	381.61	-32.36	-381.29	9.20	
8399.00	88.920	267.270	7943.03	475.38	-36.81	-475.02	4.36	
8493.00	88.920	265.160	7944.80	569.22	-43.01	-568.79	2.24	
8588.00	88.920	263.260	7946.60	663.81	-52.59	-663.29	2.00	
8682.00	89.080	261.240	7948.24	757.06	-65.26	-756.41	2.16	
8777.00	88.740	260.900	7950.04	851.04	-80.01	-850.24	0.51	
8871.00	88.680	260.350	7952.16	943.92	-95.32	-942.96	0.59	
8965.00	88.650	260.950	7954.35	1036.80	-110.58	-1035.69	0.64	
9060.00	88.800	262.320	7956.46	1130.90	-124.40	-1129.65	1.45	
9154.00	88.680	263.160	7958.53	1224.25	-136.28	-1222.87	0.90	
9249.00	88.650	264.550	7960.74	1318.78	-146.44	-1317.30	1.46	
9343.00	88.710	266.090	7962.91	1412.51	-154.11	-1410.96	1.64	
9437.00	88.980	267.390	7964.80	1506.39	-159.46	-1504.79	1.41	
9532.00	89.050	272.920	7966.44	1601.33	-159.20	-1599.73	5.82	
9626.00	88.710	275.630	7968.28	1694.96	-152.19	-1693.45	2.91	
9721.00	88.830	275.840	7970.32	1789.36	-142.70	-1787.95	0.25	
9816.00	88.740	274.830	7972.33	1883.83	-133.87	-1882.51	1.07	
9910.00	88.950	274.700	7974.22	1977.39	-126.06	-1976.17	0.26	
10005.00	88.710	274.280	7976.16	2072.00	-118.63	-2070.86	0.51	
10099.00	89.350	275.060	7977.76	2165.59	-110.98	-2164.53	1.07	
10194.00	88.770	277.050	7979.31	2259.93	-100.96	-2258.98	2.18	
10288.00	88.830	280.040	7981.28	2352.70	-87.00	-2351.91	3.18	
10382.00	89.200	281.050	7982.90	2444.91	-69.80	-2444.31	1.14	
10477.00	89.910	273.960	7983.64	2538.90	-57.40	-2538.43	7.50	
10572.00	88.710	271.180	7984.78	2633.73	-53.14	-2633.32	3.19	
10666.00	89.230	270.850	7986.47	2727.68	-51.47	-2727.29	0.66	

REFERENCE WELLPATH IDENTIFICATION			
Operator	Burlington Resources	Slot	SLOT#01 STATE BIERSTADT 4-65 35-34 1CH (1251'FNL & 610'FEL, SEC.35)
Area	COLORADO	Well	STATE BIERSTADT 4-65 35-34 1CH
Field	ARAPAHOE COUNTY (NAD83/TN)	Wellbore	STATE BIERSTADT 4-65 35-34 1CH AWP
Facility	SEC.35-T04S-R65W		

WELLPATH DATA (155 stations)								
MD [ft]	Inclination [°]	Azimuth [°]	TVD [ft]	Vert Sect [ft]	North [ft]	East [ft]	DLS [°/100ft]	Comments
10761.00	89.540	271.270	7987.49	2822.63	-49.71	-2822.26	0.55	
10855.00	88.580	269.610	7989.03	2916.60	-48.99	-2916.24	2.04	
10949.00	88.680	267.190	7991.28	3010.55	-51.62	-3010.17	2.58	
11044.00	88.710	265.690	7993.45	3105.40	-57.51	-3104.96	1.58	
11139.00	88.950	264.480	7995.39	3200.11	-65.65	-3199.59	1.30	
11233.00	88.680	264.240	7997.33	3293.73	-74.89	-3293.12	0.38	
11327.00	89.110	265.280	7999.14	3387.40	-83.47	-3386.71	1.20	
11422.00	89.780	265.160	8000.06	3482.14	-91.39	-3481.37	0.72	
11516.00	89.690	266.570	8000.50	3575.96	-98.16	-3575.12	1.50	
11611.00	89.690	266.980	8001.01	3670.86	-103.51	-3669.97	0.43	
11705.00	89.690	267.300	8001.52	3764.79	-108.20	-3763.85	0.34	
11799.00	89.750	268.010	8001.98	3858.74	-112.04	-3857.77	0.76	
11894.00	89.660	268.600	8002.47	3953.72	-114.85	-3952.73	0.63	
11988.00	89.780	268.400	8002.93	4047.71	-117.32	-4046.69	0.25	
12083.00	89.820	266.700	8003.26	4142.66	-121.38	-4141.60	1.79	
12177.00	89.690	268.090	8003.66	4236.60	-125.65	-4235.50	1.49	
12271.00	89.750	270.460	8004.12	4330.59	-126.84	-4329.49	2.52	
12366.00	89.690	269.310	8004.59	4425.58	-127.03	-4424.49	1.21	
12461.00	89.720	269.460	8005.07	4520.58	-128.05	-4519.48	0.16	
12555.00	89.690	270.980	8005.56	4614.57	-127.69	-4613.47	1.62	
12650.00	89.660	270.530	8006.10	4709.54	-126.44	-4708.46	0.47	
12744.00	89.720	269.620	8006.61	4803.53	-126.31	-4802.46	0.97	
12839.00	89.720	268.360	8007.07	4898.52	-127.99	-4897.44	1.33	
12934.00	89.970	267.230	8007.33	4993.48	-131.64	-4992.37	1.22	
13028.00	89.970	266.830	8007.38	5087.40	-136.51	-5086.24	0.43	
13123.00	89.970	265.480	8007.43	5182.25	-142.88	-5181.03	1.42	
13217.00	89.970	266.620	8007.48	5276.09	-149.36	-5274.80	1.21	
13311.00	90.000	268.880	8007.50	5370.04	-153.05	-5368.73	2.40	
13406.00	89.880	269.400	8007.60	5465.04	-154.47	-5463.71	0.56	
13500.00	89.970	271.230	8007.72	5559.03	-153.96	-5557.71	1.95	
13595.00	90.000	272.030	8007.75	5653.95	-151.25	-5652.67	0.84	
13689.00	89.970	274.650	8007.77	5747.72	-145.78	-5746.50	2.79	
13784.00	89.880	274.760	8007.90	5842.31	-137.99	-5841.18	0.15	
13878.00	89.940	272.590	8008.04	5936.05	-131.96	-5934.98	2.31	
13972.00	90.060	272.420	8008.04	6029.91	-127.85	-6028.89	0.22	
14067.00	90.000	272.580	8007.99	6124.77	-123.71	-6123.80	0.18	
14161.00	89.910	273.260	8008.07	6218.59	-118.92	-6217.68	0.73	
14256.00	89.970	273.240	8008.17	6313.37	-113.53	-6312.53	0.07	
14351.00	89.970	272.670	8008.22	6408.19	-108.64	-6407.40	0.60	
14445.00	90.120	272.220	8008.14	6502.06	-104.63	-6501.31	0.50	
14539.00	89.970	271.570	8008.07	6595.97	-101.52	-6595.26	0.71	
14634.00	90.090	271.470	8008.02	6690.90	-99.00	-6690.23	0.16	
14728.00	90.030	271.610	8007.92	6784.84	-96.47	-6784.19	0.16	
14823.00	89.910	271.660	8007.97	6879.76	-93.76	-6879.16	0.14	
14917.00	89.880	271.510	8008.14	6973.69	-91.16	-6973.12	0.16	

REFERENCE WELLPATH IDENTIFICATION

Operator	Burlington Resources	Slot	SLOT#01 STATE BIERSTADT 4-65 35-34 1CH (1251'FNL & 610'FEL, SEC.35)
Area	COLORADO	Well	STATE BIERSTADT 4-65 35-34 1CH
Field	ARAPAHOE COUNTY (NAD83/TN)	Wellbore	STATE BIERSTADT 4-65 35-34 1CH AWB
Facility	SEC.35-T04S-R65W		

WELLPATH DATA (155 stations)

MD [ft]	Inclination [°]	Azimuth [°]	TVD [ft]	Vert Sect [ft]	North [ft]	East [ft]	DLS [°/100ft]	Comments
15012.00	89.970	271.310	8008.27	7068.63	-88.82	-7068.09	0.23	
15106.00	90.030	272.650	8008.27	7162.54	-85.58	-7162.03	1.43	
15200.00	89.970	271.320	8008.27	7256.44	-82.32	-7255.97	1.42	
15294.00	90.000	269.090	8008.29	7350.42	-81.98	-7349.97	2.37	
15389.00	89.940	268.260	8008.34	7445.41	-84.18	-7444.94	0.88	
15483.00	90.030	268.270	8008.37	7539.40	-87.03	-7538.90	0.10	
15578.00	90.000	268.090	8008.34	7634.38	-90.04	-7633.85	0.19	
15672.00	90.000	267.840	8008.34	7728.35	-93.38	-7727.79	0.27	
15766.00	89.970	267.790	8008.37	7822.31	-96.97	-7821.72	0.06	
15860.00	89.450	268.160	8008.84	7916.28	-100.29	-7915.66	0.68	
15954.00	89.450	268.360	8009.74	8010.26	-103.14	-8009.61	0.21	
16049.00	89.480	268.970	8010.63	8105.24	-105.36	-8104.58	0.64	
16142.00	89.450	269.080	8011.50	8198.24	-106.94	-8197.57	0.12	
16237.00	89.480	270.190	8012.39	8293.23	-107.54	-8292.56	1.17	
16332.00	89.450	270.120	8013.27	8388.22	-107.29	-8387.55	0.08	
16426.00	89.450	271.140	8014.18	8482.19	-106.25	-8481.54	1.09	
16520.00	89.540	272.410	8015.00	8576.11	-103.34	-8575.49	1.35	
16615.00	89.450	272.830	8015.84	8670.95	-99.00	-8670.39	0.45	
16704.00	89.450	273.540	8016.70	8759.75	-94.05	-8759.25	0.80	LAST BHGE MWD SURVEY
16728.00	89.450	273.540	8016.93	8783.69	-92.57	-8783.20	0.00	PROJECTION TO BIT

HOLE & CASING SECTIONS - Ref Wellbore: STATE BIERSTADT 4-65 35-34 1CH AWB Ref Wellpath: STATE BIERSTADT 4-65 35-34 1CH AWP

String/Diameter	Start MD [ft]	End MD [ft]	Interval [ft]	Start TVD [ft]	End TVD [ft]	Start N/S [ft]	Start E/W [ft]	End N/S [ft]	End E/W [ft]
9.625in Casing Surface	24.00	2305.00	2281.00	24.00	2304.94	0.00	0.00	-13.24	-4.05
8.5in Open Hole	2305.00	16728.00	14423.00	2304.94	8016.93	-13.24	-4.05	-92.57	-8783.20

REFERENCE WELLPATH IDENTIFICATION			
Operator	Burlington Resources	Slot	SLOT#01 STATE BIERSTADT 4-65 35-34 1CH (1251'FNL & 610'FEL, SEC.35)
Area	COLORADO	Well	STATE BIERSTADT 4-65 35-34 1CH
Field	ARAPAHOE COUNTY (NAD83/TN)	Wellbore	STATE BIERSTADT 4-65 35-34 1CH AWB
Facility	SEC.35-T04S-R65W		

TARGETS								
Name	TVD [ft]	North [ft]	East [ft]	Grid East [US ft]	Grid North [US ft]	Latitude	Longitude	Shape
SEC.34-T04S-R65W	0.00	0.00	0.00	3246487.44	1667887.01	39°39'49.990"N	104°37'28.020"W	polygon
SEC.34-T04S-R65W NE CORNER	0.00	1274.22	-4645.05	3241830.40	1669116.38	39°40'02.579"N	104°38'27.420"W	point
SEC.34-T04S-R65W NW CORNER	0.00	1288.83	-9912.54	3236563.12	1669080.23	39°40'02.708"N	104°39'34.780"W	point
SEC.34-T04S-R65W SE CORNER	0.00	-4009.44	-4707.68	3241818.70	1663832.46	39°39'10.361"N	104°38'28.208"W	point
SEC.34-T04S-R65W SW CORNER	0.00	-3985.69	-10001.31	3236525.19	1663805.18	39°39'10.580"N	104°39'35.888"W	point
SEC.35-T04S-R65W	0.00	0.00	0.00	3246487.44	1667887.01	39°39'49.990"N	104°37'28.020"W	polygon
SEC.35-T04S-R65W NE CORNER	0.00	1247.58	624.69	3247100.06	1669140.53	39°40'02.320"N	104°37'20.032"W	point
SEC.35-T04S-R65W SE CORNER	0.00	-4029.17	563.15	3247089.39	1663863.53	39°39'10.170"N	104°37'20.820"W	point
STATE BIERDTADT 4-65 35-34 1CH BPI ON PLAT (899'FNL & 935'FEL, SEC.35)	7946.00	353.14	-320.63	3246163.43	1668237.03	39°39'53.480"N	104°37'32.120"W	point
STATE BIERDTADT 4-65 35-34 1CH BPI REV-1 (1379'FNL & 935'FEL, SEC.35)	7946.00	-126.14	-320.63	3246168.04	1667757.79	39°39'48.743"N	104°37'32.120"W	point
STATE BIERDTADT 4-65 35-34 1CH BHL ON PLAT (899'FNL & 1140'FWL, SEC.34)	8026.00	387.02	-8787.59	3237696.69	1668189.32	39°39'53.800"N	104°39'20.390"W	point
STATE BIERDTADT 4-65 35-34 1CH BHL REV-1 (1379'FNL & 1140'FWL, SEC.34)	8026.00	-93.02	-8787.59	3237701.31	1667709.30	39°39'49.056"N	104°39'20.388"W	point

WELLPATH COMPOSITION - Ref Wellbore: STATE BIERSTADT 4-65 35-34 1CH AWB				Ref Wellpath: STATE BIERSTADT 4-65 35-34 1CH AWP	
Start MD [ft]	End MD [ft]	Positional Uncertainty Model	Log Name/Comment	Wellbore	
24.00	2275.00	BHI Generic gyro - continuous (Standard)	GYRO SURFACE SURVEYS <24 - 2275>	STATE BIERSTADT 4-65 35-34 1CH AWB	
2275.00	5016.00	Custom BHI OnTrak (IFR1, Standard Rotating+Axial Corr) (Rockies 0.03Gt model)	BHGE ONTRAK (IFR1, STANDARD, AXIAL CORR) <2275 - 5016>	STATE BIERSTADT 4-65 35-34 1CH AWB	
5016.00	16704.00	Custom BHI AutoTrak Curve (IFR1, Short) (Rockies 0.03Gt model)	BHGE AUTOTRAK (IFR1, SHORT) <5092 - 16704>	STATE BIERSTADT 4-65 35-34 1CH AWB	
16704.00	16728.00	Blind Drilling (std)	Projection to bit	STATE BIERSTADT 4-65 35-34 1CH AWB	

REFERENCE WELLPATH IDENTIFICATION			
Operator	Burlington Resources	Slot	SLOT#01 STATE BIERSTADT 4-65 35-34 1CH (1251'FNL & 610'FEL, SEC.35)
Area	COLORADO	Well	STATE BIERSTADT 4-65 35-34 1CH
Field	ARAPAHOE COUNTY (NAD83/TN)	Wellbore	STATE BIERSTADT 4-65 35-34 1CH AWB
Facility	SEC.35-T04S-R65W		

WELLPATH COMMENTS				
MD [ft]	Inclination [°]	Azimuth [°]	TVD [ft]	Comment
2275.00	0.490	237.990	2274.94	TIE INTO GYRO SURVEYS
16704.00	89.450	273.540	8016.70	LAST BHGE MWD SURVEY
16728.00	89.450	273.540	8016.93	PROJECTION TO BIT