

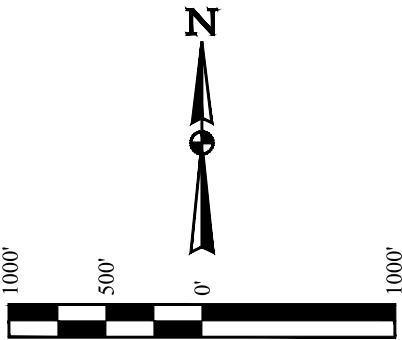
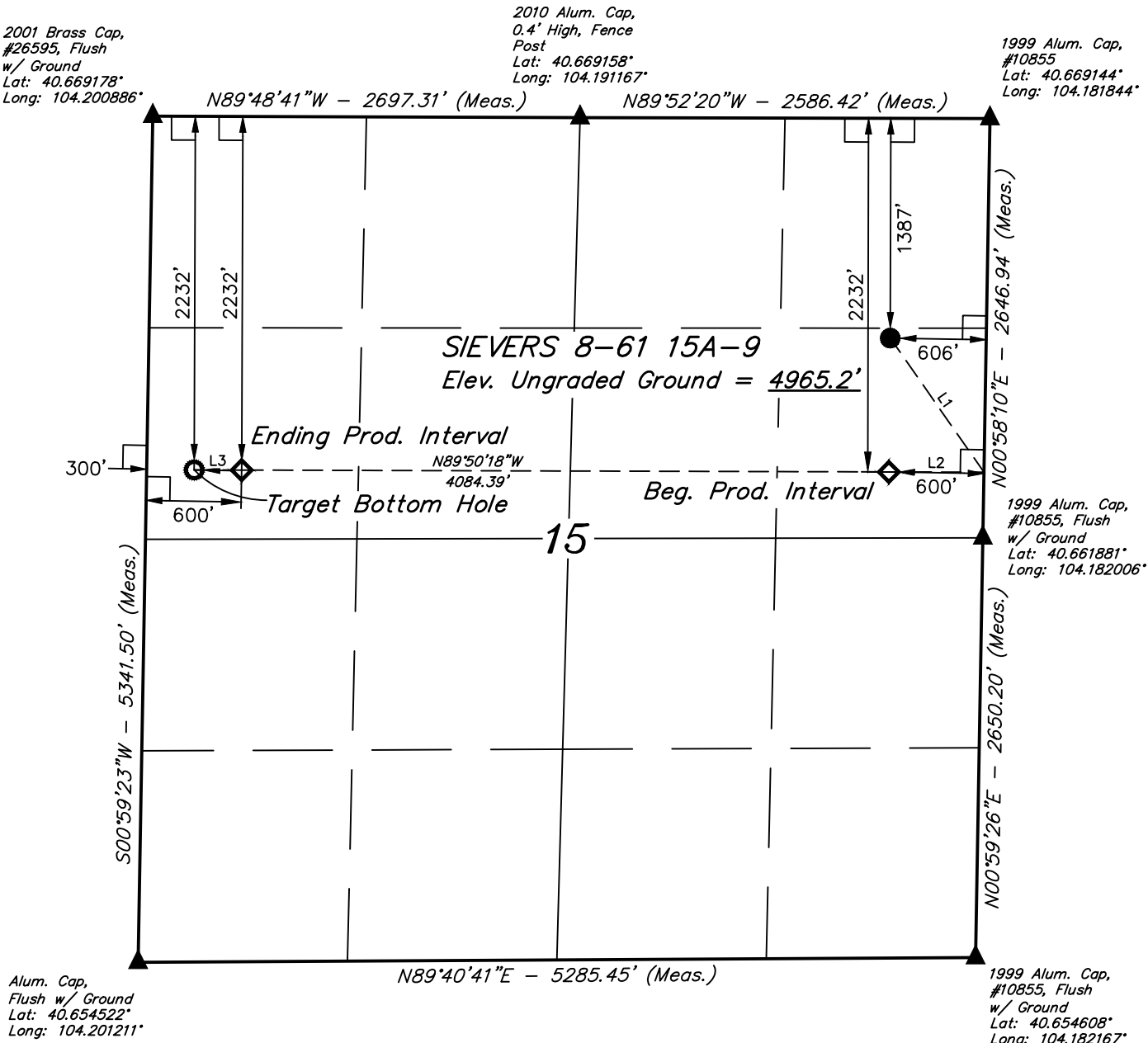
T8N, R61W, 6th P.M.

BISON OIL & GAS II

SIEVERS 8-61 15A-9
SE 1/4 NE 1/4, SECTION 15, T8N, R61W, 6th P.M.
WELD COUNTY, COLORADO

BASIS OF BEARINGS
BASIS OF ELEVATION

SPOT ELEVATION LOCATED AT THE NORTHEAST CORNER OF SECTION 1, T11N, R63W, 6th P.M. TAKEN FROM THE HEREFORD, QUADRANGLE, COLORADO, WELD COUNTY, 7.5 MINUTE QUAD (TOPOGRAPHIC MAP) PUBLISHED BY THE UNITED STATES DEPARTMENT OF THE INTERIOR, GEOLOGICAL SURVEY. SAID ELEVATION IS MARKED AS BEING 5352 FEET.



LEGEND:

- 90° SYMBOL
- PROPOSED WELLHEAD.
- PRODUCTION INTERVAL.
- TARGET BOTTOM HOLE.
- SECTION CORNERS LOCATED. (NAD 83)

| SURFACE LOCATION 1387' FNL 606' FEL | BEG. PROD. INTERVAL 2232' FNL 600' FEL | ENDING PROD. INTERVAL 2232' FNL 600' FWL | TARGET BOTTOM HOLE 2232' FNL 300' FWL |
|--|---|---|--|
| NAD 83 (SURFACE LOCATION) | NAD 83 (BEG. PROD. INTERVAL) | NAD 83 (ENDING PROD. INTERVAL) | NAD 83 (TARGET BOTTOM HOLE) |
| LATITUDE = 40°39'55.22" (40.665339) | LATITUDE = 40°39'46.88" (40.663022) | LATITUDE = 40°39'46.98" (40.663050) | LATITUDE = 40°39'46.99" (40.663053) |
| LONGITUDE = 104°11'02.80" (104.184111) | LONGITUDE = 104°11'02.91" (104.184142) | LONGITUDE = 104°11'55.90" (104.198861) | LONGITUDE = 104°11'59.79" (104.199942) |
| NAD 27 (SURFACE LOCATION) | NAD 27 (BEG. PROD. INTERVAL) | NAD 27 (ENDING PROD. INTERVAL) | NAD 27 (TARGET BOTTOM HOLE) |
| LATITUDE = 40°39'55.28" (40.665356) | LATITUDE = 40°39'46.93" (40.663036) | LATITUDE = 40°39'47.04" (40.663067) | LATITUDE = 40°39'47.04" (40.663067) |
| LONGITUDE = 104°11'00.99" (104.183608) | LONGITUDE = 104°11'01.10" (104.183639) | LONGITUDE = 104°11'54.08" (104.198356) | LONGITUDE = 104°11'57.98" (104.199439) |
| STATE PLANE NAD 83 (CO. NORTH) | STATE PLANE NAD 83 (CO. NORTH) | STATE PLANE NAD 83 (CO. NORTH) | STATE PLANE NAD 83 (CO. NORTH) |
| N: 1487934.37 E: 3365040.71 | N: 1487090.04 E: 3365044.77 | N: 1487039.99 E: 3360961.73 | N: 1487036.32 E: 3360661.79 |
| STATE PLANE NAD 27 (CO. NORTH) | STATE PLANE NAD 27 (CO. NORTH) | STATE PLANE NAD 27 (CO. NORTH) | STATE PLANE NAD 27 (CO. NORTH) |
| N: 487933.49 E: 2365190.23 | N: 487089.18 E: 2365194.30 | N: 487039.19 E: 2361111.13 | N: 487035.52 E: 2360811.19 |

CERTIFICATE

THIS IS TO CERTIFY THAT THE ABOVE PLAT WAS PREPARED FROM FIELD NOTES OF ACTUAL SURVEYS MADE BY ME OR UNDER MY SUPERVISION AND THAT THE SAME ARE TRUE AND CORRECT TO THE BEST OF MY KNOWLEDGE AND BELIEF.

REGISTERED LAND SURVEYOR
REGISTRATION NO. 28285
STATE OF COLORADO
JAMES FRESHWATER, G.B.

REV: 1 10-11-17 C.C. (FIX DATE TYPO)



UELS, LLC
Corporate Office * 85 South 200 East
Vernal, UT 84078 * (435) 789-1017

| | | | |
|-------------|------------------------|----------|------------|
| SURVEYED BY | JAMES FRESHWATER, G.B. | 09-07-17 | SCALE |
| DRAWN BY | J.J. | 09-11-17 | 1" = 1000' |

WELL LOCATION PLAT