

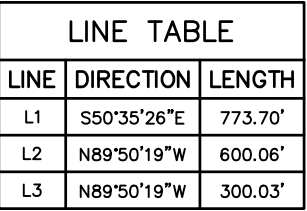
**BISON OIL & GAS II**

---

**SIEVERS 8-61 15A-8**  
**SE 1/4 NE 1/4, SECTION 15, T8N, R61W, 6th P.M.**  
**WELD COUNTY, COLORADO**






**BASIS OF BEARINGS**  
BASIS OF BEARINGS IS A G.P.S. OBSERVATION

**BASIS OF ELEVATION**



SURFACE LOCATION 1359' FNL 606' FEL	BEG. PROD. INTERVAL 1849' FNL 600' FEL	ENDING PROD. INTERVAL 1849' FNL 600' FWL	TARGET BOTTOM HOLE 1849' FNL 300' FWL
<b>NAD 83 (SURFACE LOCATION)</b>	<b>NAD 83 (BEG. PROD. INTERVAL)</b>	<b>NAD 83 (ENDING PROD. INTERVAL)</b>	<b>NAD 83 (TARGET BOTTOM HOLE)</b>
LATITUDE = 40°39'55.50" (40.665417)	LATITUDE = 40°39'50.66" (40.664072)	LATITUDE = 40°39'50.76" (40.664100)	LATITUDE = 40°39'50.77" (40.664103)
LONGITUDE = 104°11'02.80" (104.184111)	LONGITUDE = 104°11'02.83" (104.184119)	LONGITUDE = 104°11'55.81" (104.198836)	LONGITUDE = 104°11'59.71" (104.199919)
<b>NAD 27 (SURFACE LOCATION)</b>	<b>NAD 27 (BEG. PROD. INTERVAL)</b>	<b>NAD 27 (ENDING PROD. INTERVAL)</b>	<b>NAD 27 (TARGET BOTTOM HOLE)</b>
LATITUDE = 40°39'55.55" (40.665431)	LATITUDE = 40°39'50.72" (40.664089)	LATITUDE = 40°39'50.82" (40.664117)	LATITUDE = 40°39'50.83" (40.664119)
LONGITUDE = 104°11'00.99" (104.183608)	LONGITUDE = 104°11'01.01" (104.183614)	LONGITUDE = 104°11'54.00" (104.198333)	LONGITUDE = 104°11'57.89" (104.199414)
<b>STATE PLANE NAD 83 (CO. NORTH)</b>	<b>STATE PLANE NAD 83 (CO. NORTH)</b>	<b>STATE PLANE NAD 83 (CO. NORTH)</b>	<b>STATE PLANE NAD 83 (CO. NORTH)</b>
N: 1487962.33 E: 3365040.37	N: 1487472.98 E: 3365045.47	N: 1487422.93 E: 3360962.57	N: 1487419.25 E: 3360662.64
<b>STATE PLANE NAD 27 (CO. NORTH)</b>	<b>STATE PLANE NAD 27 (CO. NORTH)</b>	<b>STATE PLANE NAD 27 (CO. NORTH)</b>	<b>STATE PLANE NAD 27 (CO. NORTH)</b>
N: 487961.46 E: 2365189.89	N: 487472.12 E: 2365195.00	N: 487422.12 E: 2361111.97	N: 487418.45 E: 2360812.03

**LEGEND:**

	= 90° SYMBOL
	= PROPOSED WELLHEAD.
	= PRODUCTION INTERVAL.
	= TARGET BOTTOM HOLE.
	= SECTION CORNERS LOCATED. (NAD 83)

THIS IS TO CERTIFY THAT THE ABOVE MAP WAS PREPARED FROM FIELD NOTES OF ACTUAL SURVEYS MADE BY ME OR UNDER MY SUPERVISION, AND THAT THE SAME ARE TRUE AND CORRECT TO THE BEST OF MY KNOWLEDGE AND BELIEF.

*[Signature]*

REGISTERED LAND SURVEYOR  
REGISTRATION NO. 28285  
STATE OF COLORADO

10-11-17

REV: 1	10-11-17	C.C.	(FIX DATE TYPO)
--------	----------	------	-----------------



**UELS, LLC**  
Corporate Office \* 85 South 200 East  
Vernal, UT 84078 \* (435) 789-1017

<b>SURVEYED BY</b>	JAMES FRESHWATER, G.B.	09-07-17	<b>SCALE</b>
<b>DRAWN BY</b>	J.J.	09-11-17	1" = 1000'

## WELL LOCATION PLAT