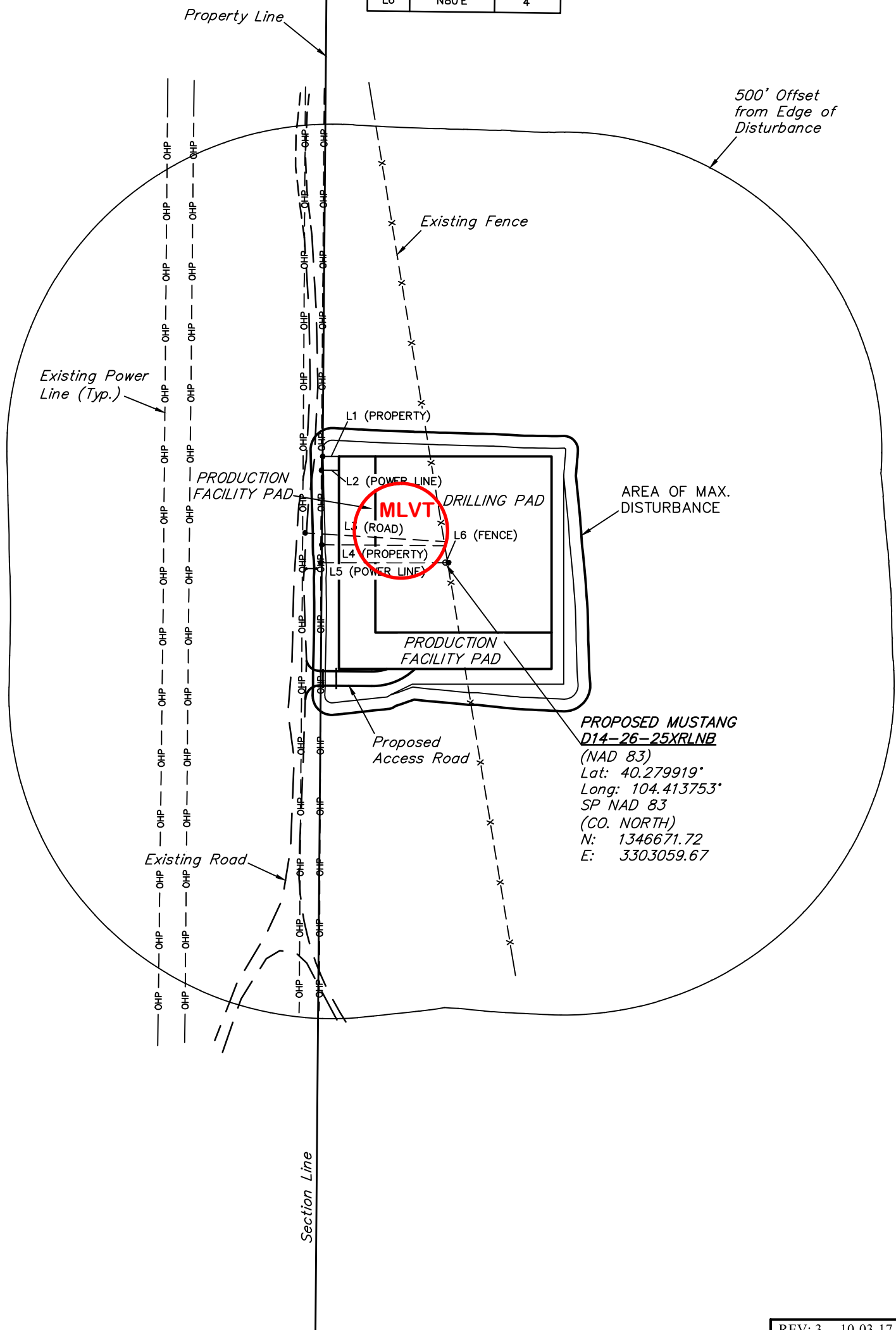


Section 27
Section 26

LINE TABLE		
LINE	DIRECTION	LENGTH
L1	WEST	27'
L2	WEST	29'
L3	N87°W	231'
L4	WEST	203'
L5	S89°W	205'
L6	N80°E	4'



**PROPOSED MUSTANG
D14-26-25XRLNB**
(NAD 83)
Lat: 40.279919°
Long: 104.413753°
SP NAD 83
(CO. NORTH)
N: 1346671.72
E: 3303059.67

REV: 3 10-03-17 D.COX (PAD MOVE)

PLANT COMMUNITY

☐ DISTURBED GRASSLAND

☒ NATIVE GRASSLAND

☐ SHRUB LAND

☐ PLAINS RIPARIAN

☐ MOUNTAIN RIPARIAN

☐ FOREST LAND

☐ WETLANDS AQUATIC

☐ ALPINE

☐ OTHER (Describe):

CURRENT LAND USE

CROP LAND:

NON-CROP LAND:

SUBDIVIDED:

☐ IRRIGATED

☒ RANGELAND

☐ INDUSTRIAL

☐ DRY LAND

☐ TIMBER

☐ COMMERCIAL

☐ IMPROVED PASTURE

☐ RECREATIONAL

☐ RESIDENTIAL

☐ HAY MEADOW

☐ OTHER (Describe)

☐ CRP

FUTURE LAND USE

CROP LAND:

NON-CROP LAND:

SUBDIVIDED:

☐ IRRIGATED

☒ RANGELAND

☐ INDUSTRIAL

☐ DRY LAND

☐ TIMBER

☐ COMMERCIAL

☐ IMPROVED PASTURE

☐ RECREATIONAL

☐ RESIDENTIAL

☐ HAY MEADOW

☐ OTHER (Describe)

☐ CRP

NOTES:

BONANZA CREEK ENERGY
OPERATING COMPANY, LLC

MUSTANG 14-26 PAD
W 1/2 SW 1/4, SECTION 26, T4N, R63W, 6th P.M.
WELD COUNTY, COLORADO

SURVEYED BY

DRAWN BY

CHAD MEIERS

M.F.D.

09-06-17

11-21-16

SCALE

1" = 200'

LOCATION DRAWING



UELS, LLC
Corporate Office * 85 South 200 East
Vernal, UT 84078 * (435) 789-1017