

LEGEND:

 **PROPOSED LOCATION**



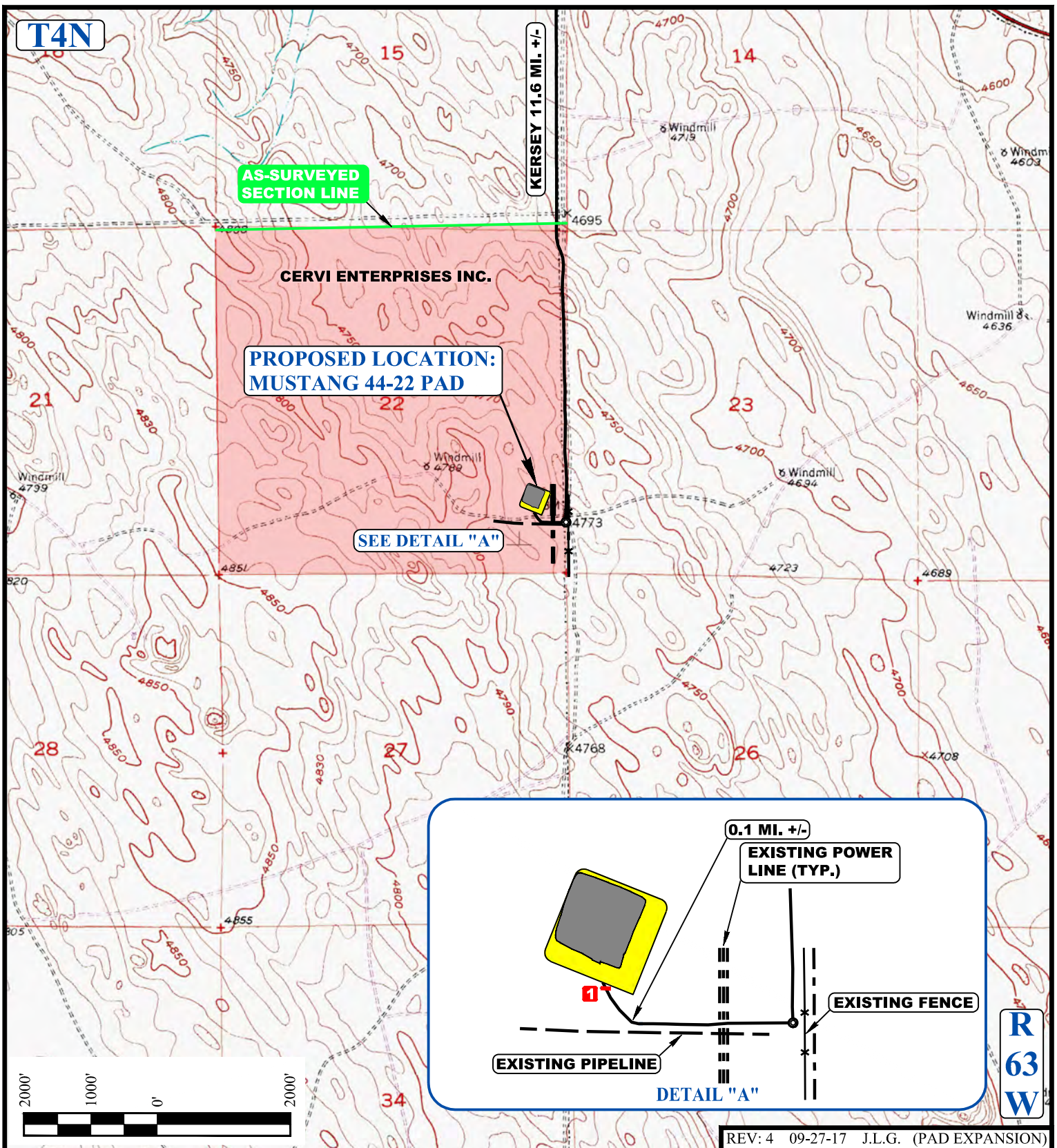
UELS, LLC
Corporate Office * 85 South 200 East
Vernal, UT 84078 * (435) 789-1017



**BONANZA CREEK ENERGY
OPERATING COMPANY, LLC**

MUSTANG 44-22 PAD
SE 1/4 SE 1/4, SECTION 22, T4N, R63W, 6th P.M.
WELD COUNTY, COLORADO

SURVEYED BY	L.S.	08-12-17	SCALE
DRAWN BY	M.F.D.	11-22-16	1 : 100,000
ACCESS ROAD MAP			TOPO A



NOTE: PARCEL DATA SHOWN HAS BEEN OBTAINED FROM VARIOUS SOURCES AND SHOULD BE USED FOR MAPPING, GRAPHIC AND PLANNING PURPOSES ONLY. NO WARRANTY IS MADE BY UINTAH ENGINEERING AND LAND SURVEYING (UELS) FOR ACCURACY OF THE PARCEL DATA.

LEGEND:

- EXISTING ROAD
- EXISTING POWER LINE
- EXISTING FENCE
- AS SURVEYED SECTION LINE
- INSTALL 18" CULVERT



BONANZA CREEK ENERGY OPERATING COMPANY, LLC

MUSTANG 44-22 PAD
SE 1/4 SE 1/4, SECTION 22, T4N, R63W, 6th P.M.
WELD COUNTY, COLORADO

SURVEYED BY	L.S.	08-12-17	SCALE
DRAWN BY	M.F.D.	11-22-16	1 : 24,000
ACCESS ROAD MAP			TOPO B



UELS, LLC
Corporate Office * 85 South 200 East
Vernal, UT 84078 * (435) 789-1017