

HALLIBURTON

iCem[®] Service

TERRA ENERGY PARTNERS

For: Terra

Date: Saturday, July 01, 2017

TR 21-23-597 Production PJR

API# 05-045-23465-00

Sincerely,

Grand Junction Cement Engineering

2.0 Real-Time Job Summary

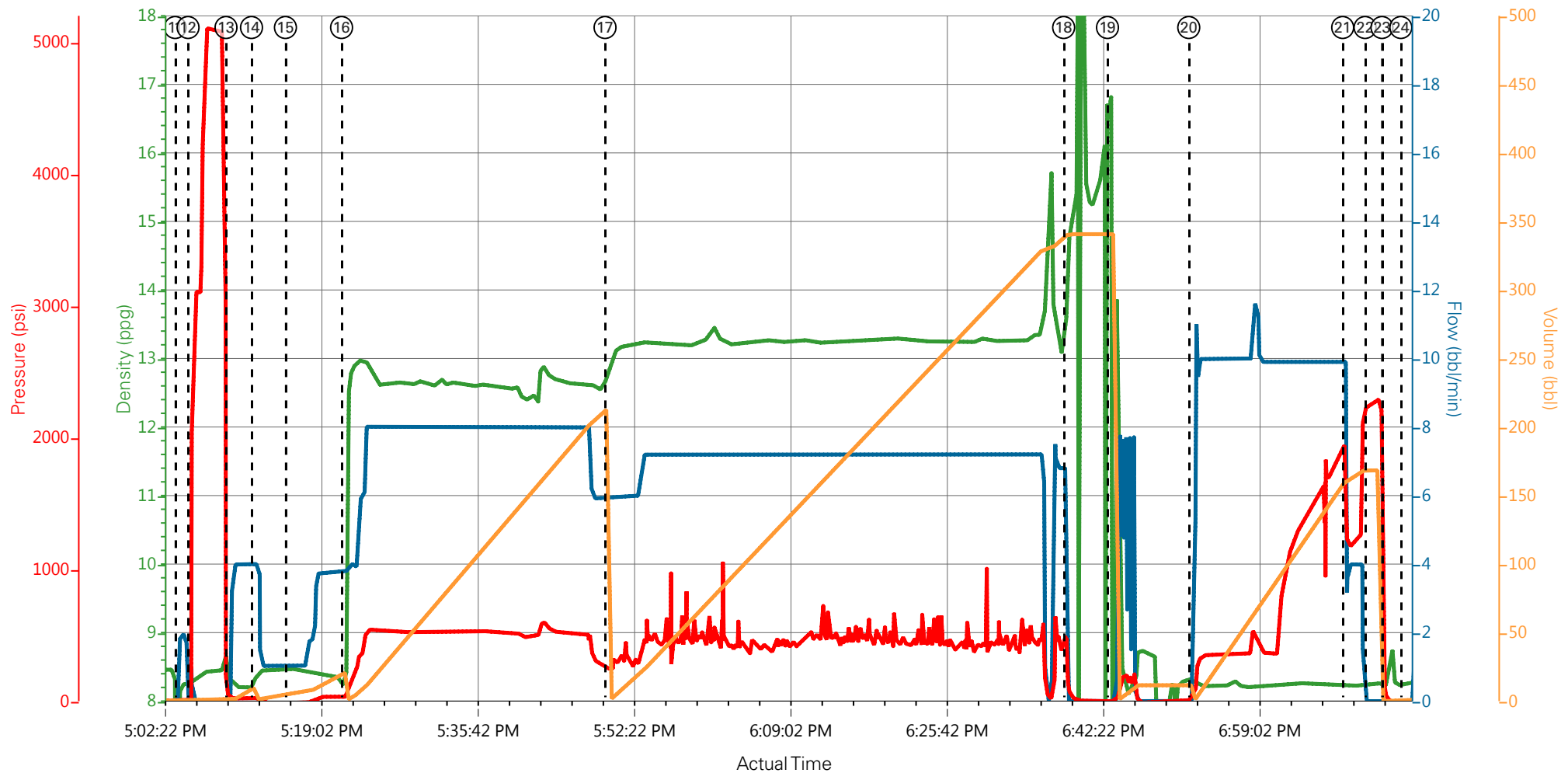
2.1 Job Event Log

Type	Seq. No.	Graph Label	Date	Time	Source	Downhole Density (ppg)	Combined Pump Rate (bbl/min)	Pass-Side Pump Pressure (psi)	Pump Stage Total (bbl)	Comments
Event	1	Call Out	7/1/2017	07:30:00	USER					ALL HES CREW CALLED OUT
Event	2	Pre-Convoy Safety Meeting	7/1/2017	09:30:00	USER					JOURNEY CREATED, ALL HES INVOLVED IN SAFETY MEETING
Event	3	Crew Leave Yard	7/1/2017	09:45:00	USER					1-F-550 PICKUP, 1-ELITE PUMP TRUCK, 1-660 BULK TRUCK
Event	4	Arrive At Loc	7/1/2017	13:30:00	USER					HES ARRIVED ON TIME, HES REP SPOKE WITH COMPANY REP PRIOR TO SPOTTING EQUIPMENT
Event	5	Assessment Of Location Safety Meeting	7/1/2017	13:45:00	USER					RIG WAS RUNNING CASING, HES REP SPOTTED EQUIPMENT AND HELD SAFETY MEETING
Event	6	Pre-Rig Up Safety Meeting	7/1/2017	14:00:00	USER					JSA FILLED OUT AND REVIEWED BY ALL HES CREW
Event	7	Rig-Up Equipment	7/1/2017	14:05:00	USER					RIG UP IRON TO THE STAND PIPE, IRON TO THE PIT, WATER HOSES TO BOTH UPRIGHT AND BULK SILOS AND BULK TRUCK TO PUMP TRUCK
Event	8	Rig-Up Completed	7/1/2017	15:05:00	USER					RIG-UP COMPLETED SAFELY
Event	9	Pre-Job Safety Meeting	7/1/2017	16:05:00	USER					ALL HES, RIG CREW AND COMPANY REP INVOLVED IN SAFETY MEETING
Event	10	Start Job	7/1/2017	17:00:00	USER					TD: 10,529FT TP: 10,519FT SJ: 29.13FT OH: 8.75 CSG: 4.5 11.6# P-110 SRF CSG: 9.625 40# J-55 MUD WT: 8.8# VISC: 85 WTR TEST: TEMP- 60 PH- 7 CHLOR- 0
Event	11	Fill Lines	7/1/2017	17:03:48	USER	8.34	2	25	2	FILL LINES TO PRESSURE TEST

Event	12	Test Lines	7/1/2017	17:05:11	COM5			5120		PRESSURE TEST LINES TO 5120PSI, PRESSURE TEST OK
Event	13	Fresh Water Spacer	7/1/2017	17:09:14	COM5	8.33	4	20	10	10BBL FRESH WATER SPACER PUMPED AT 4BBL/MIN, PRESSURE WAS 20PSI
Event	14	Mud Flush Spacer	7/1/2017	17:11:57	COM5	8.7	4	200	20	20BBL MUD FLUSH SPACER
Event	15	Check weight	7/1/2017	17:15:34	COM5	12.5				VERIFIED WEIGHT OF FIRST TUB OF CEMENT
Event	16	Pump Lead Cement	7/1/2017	17:21:33	COM5	12.5	8	530	200.4	580SKS OF NEOCEM CEMENT (200.4BBLs) 12.5PPG 1.94YIELD 9.58GAL/SK WEIGHT OF CEMENT VERIFIED VIA MUD SCALES THROUGHOUT LEAD CEMENT, 30 POUNDS (2BOXES OF TUF-FIBER ADDED THROUGHOUT LEAD)
Event	17	Pump Tail Cement	7/1/2017	17:49:38	COM5	13.0	7	500	318.8	865SKS OF NEOCEM CEMENT (318.8BBLs) 13.0PPG 2.07YIELD 9.43GAL/SK WEIGHT OF CEMENT VERIFIED VIA MUD SCALES THROUGHOUT TAIL CEMENT
Event	18	Shutdown	7/1/2017	18:38:31	USER					SHUTDOWN END OF CEMENT
Event	19	Clean Lines	7/1/2017	18:43:11	USER					CLEAN LINES TO THE PIT WITH RIG SUPPLIED AIR AND WASH UP LINES WITH WATER, CLEAN LINES TO THE PIT WITH RIG SUPPLIED AIR, READY TANKS FOR DISPLACEMENT
Event	20	Pump Displacement	7/1/2017	18:51:51	COM5	8.34	10	1950	152.6	FRESH WATER DISPLACEMENT WITH 1-GAL MMCR, 3POUNDS OF BE-6 AND 1 BAG OF KCL PER 10BBLs OF DISPLACEMENT
Event	21	Slow Rate	7/1/2017	19:08:15	USER	8.34	4	1175	10	SLOW RATE TO 4BBL/MIN TO BUMP THE PLUG, PRESSURE PRIOR TO SLOWING WAS 1950PSI, PRESSURE AFTER SLOWING WAS 1175PSI
Event	22	Bump Plug	7/1/2017	19:10:38	COM5	8.34	4	1200	162.2	PLUG BUMPED AT CALCULATED DISPLACEMENT, PLUG BUMPED AT 1200 PSI TOOK TO 2270PSI
Event	23	Check Floats	7/1/2017	19:12:27	COM5			2270		CHECK FLOATS, FLOATS HELD 1.5BBLs BACK TO

						TANKS
Event	24	End Job	7/1/2017	19:14:27	COM5	THANK YOU FOR CHOOSING HALLIBURTON CEMENT CARL KUKUS AND CREW
Event	25	Pre-Rig Down Safety Meeting	7/1/2017	19:20:00	USER	JSA REVIEWED ALL HES IN ATTENDANCE FOR SAFETY MEETING
Event	26	Rig-Down Equipment	7/1/2017	19:25:00	USER	WASH UP AND BLOW DOWN PUMP TRUCK, RIG DOWN ALL LINES AND EQUIPMENT
Event	27	Rig-Down Completed	7/1/2017	20:25:00	USER	RIG-DOWN COMPLETED SAFELY
Event	28	Pre-Convoy Safety Meeting	7/1/2017	20:30:00	USER	JOURNEY CREATED, ALL HES IN ATTENDANCE FOR SAFETY MEETING
Event	29	Crew Leave Location	7/1/2017	20:35:00	USER	1-F-550 PICKUP, 1-ELITE PUMP TRUCK, 1-660 BULK TRUCK

TEP - CHEVRON TR 21-23-597 - 904128083 - PRODUCTION



— DH Density (ppg)
 — Comb Pump Rate (bbl/min)
 — PS Pump Press (psi)
 — Pump Stg Tot (bbl)

① Call Out n/a;n/a;n/a;n/a	⑨ Pre-Job Safety Meeting 8.37;0;-2;0	⑰ Pump Tail Cement 12.86;5.9;239;0	25 Pre-Rig Down Safety Meeting n/a;n/a;n/a;n/a
② Pre-Convoy Safety Meeting n/a;n/a;n/a;n/a	⑩ Start Job 8.46;0;2;0	⑱ Shutdown 14.07;0;193;340.7	26 Rig-Down Equipment n/a;n/a;n/a;n/a
③ Crew Leave Yard n/a;n/a;n/a;n/a	⑪ Fill Lines 5.12;0;5;0	⑲ Clean Lines 16.84;0;-2;340.7	27 Rig-Down Completed n/a;n/a;n/a;n/a
④ Arrive At Loc n/a;n/a;n/a;n/a	⑫ Test Lines 8.21;0;2065;1.6	20 Pump Displacement 8.3;0;2;0	28 Pre-Convoy Safety Meeting n/a;n/a;n/a;n/a
⑤ Assessment Of Location Safety Meeting n/a;n/a;n/a;n/a	⑬ Fresh Water Spacer 8.33;0;18;1.6	21 Slow Rate 8.25;5;1508;161.6	29 Crew Leave Location n/a;n/a;n/a;n/a
⑥ Pre-Rig Up Safety Meeting n/a;n/a;n/a;n/a	⑭ Mud Flush Spacer 8.33;4;22;0	22 Bump Plug 8.26;0;2245;168.4	
⑦ Rig-Up Equipment n/a;n/a;n/a;n/a	⑮ Check weight 8.46;1;-16;5.2	23 Check Floats 8.21;0;49;0	
⑧ Rig-Up Completed n/a;n/a;n/a;n/a	⑯ Pump Lead Cement 8.29;3.8;28;0	24 End Job 8.24;0;-8;0	

▼ **HALLIBURTON** | iCem® Service

Created: 2017-07-01 14:53:20, Version: 4.2.393

Edit

Customer : TERRA ENERGY PARTNERS

Job Date : 7/1/2017 3:51:50 PM

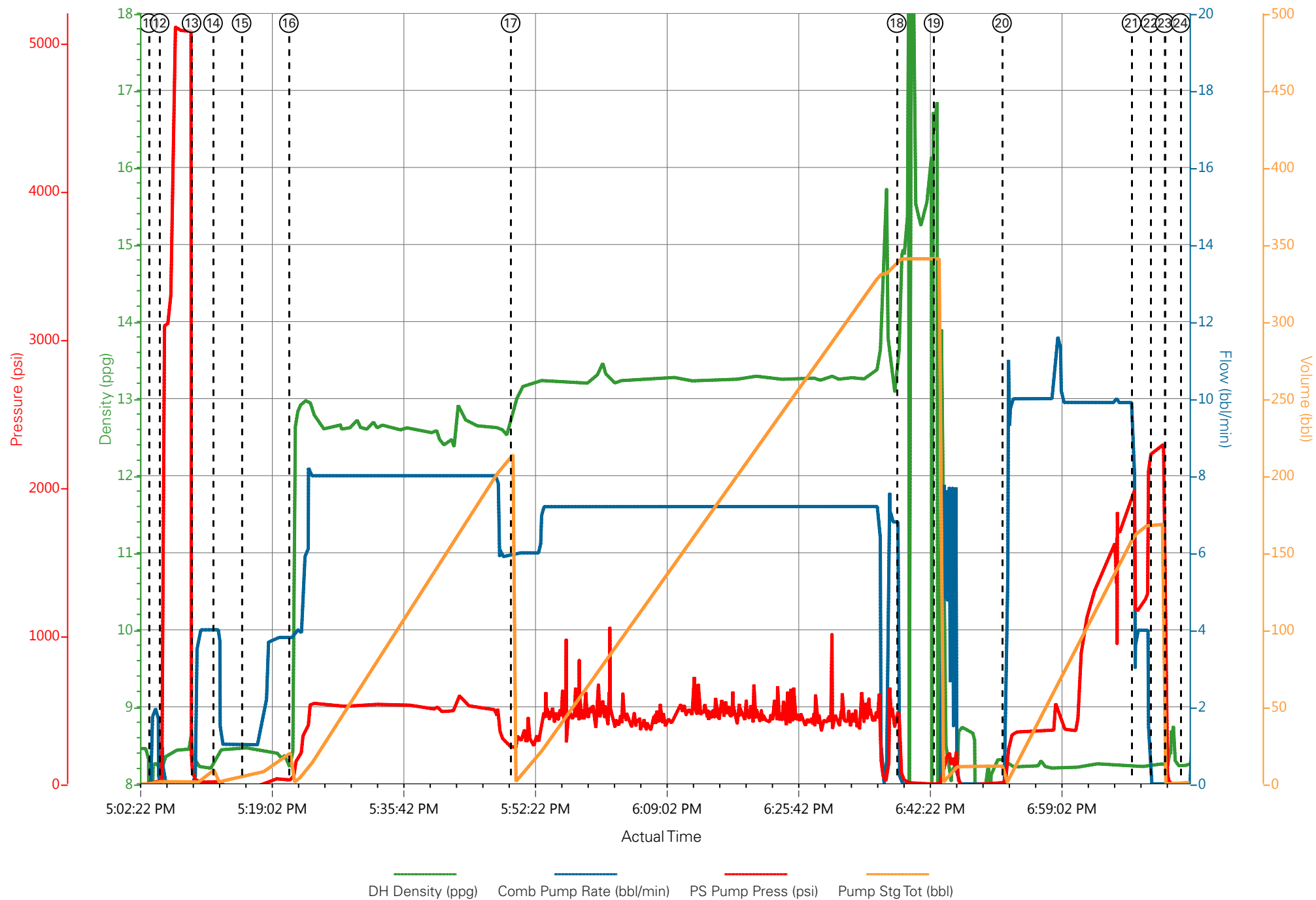
Well : Chevron Trail Ridge 21-23-597

Representative : Jarvis Abbey

Sales Order # : 904128083

Elite 4 : Dillon Martin/Carlton Kukus

TEP - CHEVRON TR 21-23-597 - 904128083 - PRODUCTION



HALLIBURTON

Rockies, Grand Junction

Lab Results- Lead

Job Information

Request/Slurry	2397372/1	Rig Name	H&P 271	Date	25/JUN/2017
Submitted By	Aaron Katz	Job Type	Production Casing	Bulk Plant	Grand Junction
Customer	Terra Energy Partners	Location	Garfield	Well	TR 21-23-597

Well Information

Casing/Liner Size	4.5 in	Depth MD	10738 ft	BHST	123°C / 254°F
Hole Size	8.75 in	Depth TVD	10237 ft	BHCT	89°C / 193°F
Pressure	6460 psi				

Drilling Fluid Information

Mud Supplier Name	Baroid	Mud Trade Name	BARADRIL-N	Density	10.4 lbm/gal
--------------------------	--------	-----------------------	------------	----------------	--------------

Cement Information - Lead Design



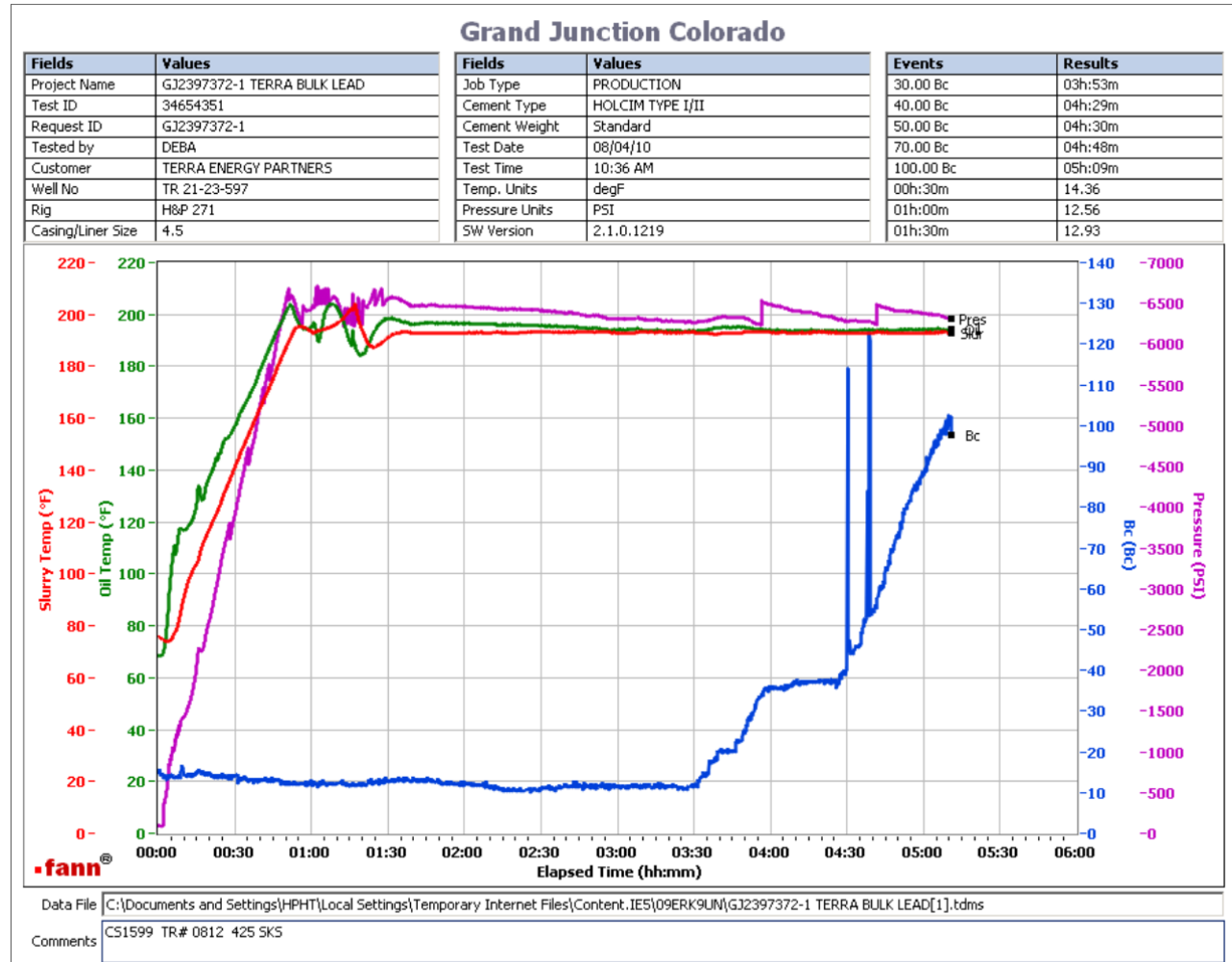
<u>Conc</u>	<u>UOM</u>	<u>Cement/Additive</u>	<u>Sample Type</u>	<u>Sample Date</u>	<u>Lot No.</u>	Cement Properties		
		NeoCem Lead				Slurry Density	12.5	lbm/gal
						Slurry Yield	1.941	ft3/sack
						Water Requirement	9.623	gal/sack
						Total Mix Fluid	9.623	gal/sack
						Water Source	Fresh Water	
						Water Chloride		

This report is the property of Halliburton Energy Services and neither it nor any part thereof, nor a copy thereof, is to be published or disclosed without first securing the expressed written approval of Halliburton. It may however be used in the course of regular business operations by any person or concern receiving such report from Halliburton. This report is for information purposes only and the content is limited to the sample described. Halliburton makes no warranties, expressed or implied, as to the accuracy of the contents or results. Any user of this report agrees Halliburton shall not be liable for any loss or damage regardless of cause, including any act or omission of Halliburton, resulting from the use hereof.

Thickening Time - ON-OFF-ON

27/JUN/2017

Test Temp (°F)	Pressure (psi)	Reached in (min)	30 Bc (hh:mm)	50 Bc (hh:mm)	70 Bc (hh:mm)	100 Bc (hh:mm)	Start Bc	Stirring before stop (mins)	Static Period (min)	Peak reading (BC)
193	6460	51	3:53	4:30	4:48	5:09	15	61	15	12



Total sks = 580
 CS1599 TR#0812 425 SKS
 Deflection: 12 - 12

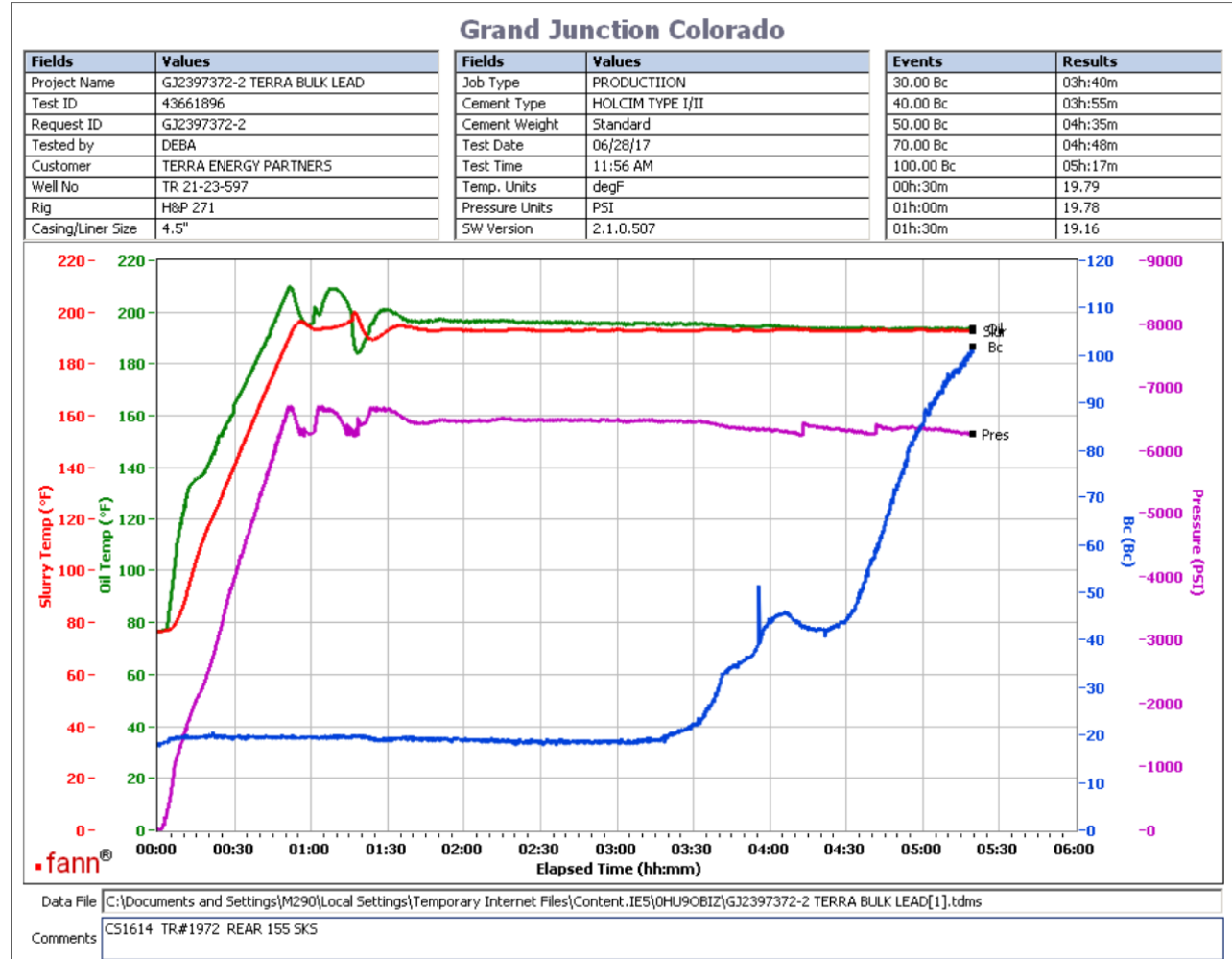
This report is the property of Halliburton Energy Services and neither it nor any part thereof, nor a copy thereof, is to be published or disclosed without first securing the expressed written approval of Halliburton. It may however be used in the course of regular business operations by any person or concern receiving such report from Halliburton. This report is for information purposes only and the content is limited to the sample described. Halliburton makes no warranties, expressed or implied, as to the accuracy of the contents or results. Any user of this report agrees Halliburton shall not be liable for any loss or damage regardless of cause, including any act or omission of Halliburton, resulting from the use hereof.

Operation Test Results Request ID 2397372/2

Thickening Time - ON-OFF-ON

28/JUN/2017

Test Temp (°F)	Pressure (psi)	Reached in (min)	30 Bc (hh:mm)	50 Bc (hh:mm)	70 Bc (hh:mm)	100 Bc (hh:mm)	Start Bc	Stirring before stop (mins)	Static Period (min)	Peak reading (BC)
193	6460	51	3:40	4:35	4:48	5:17	17	61	15	19



Total sks = 580

CS1614 TR# 1972 Rear 155 SKS

Deflection: 19 - 19

This report is the property of Halliburton Energy Services and neither it nor any part thereof, nor a copy thereof, is to be published or disclosed without first securing the expressed written approval of Halliburton. It may however be used in the course of regular business operations by any person or concern receiving such report from Halliburton. This report is for information purposes only and the content is limited to the sample described. Halliburton makes no warranties, expressed or implied, as to the accuracy of the contents or results. Any user of this report agrees Halliburton shall not be liable for any loss or damage regardless of cause, including any act or omission of Halliburton, resulting from the use hereof.

HALLIBURTON

Rockies, Grand Junction

Lab Results- Tail

Job Information

Request/Slurry	2397373/1	Rig Name	H&P 271	Date	25/JUN/2017
Submitted By	Aaron Katz	Job Type	Production Casing	Bulk Plant	Grand Junction
Customer	Terra Energy Partners	Location	Garfield	Well	TR 21-23-597

Well Information

Casing/Liner Size	4.5 in	Depth MD	10728 ft	BHST	123°C / 254°F
Hole Size	8.75 in	Depth TVD	10237 ft	BHCT	89°C / 193°F
Pressure	6460 psi				

Drilling Fluid Information

Mud Supplier Name	Baroid	Mud Trade Name	BARADRIL-N	Density	10.4 lbm/gal
--------------------------	--------	-----------------------	------------	----------------	--------------

Cement Information - Tail Design



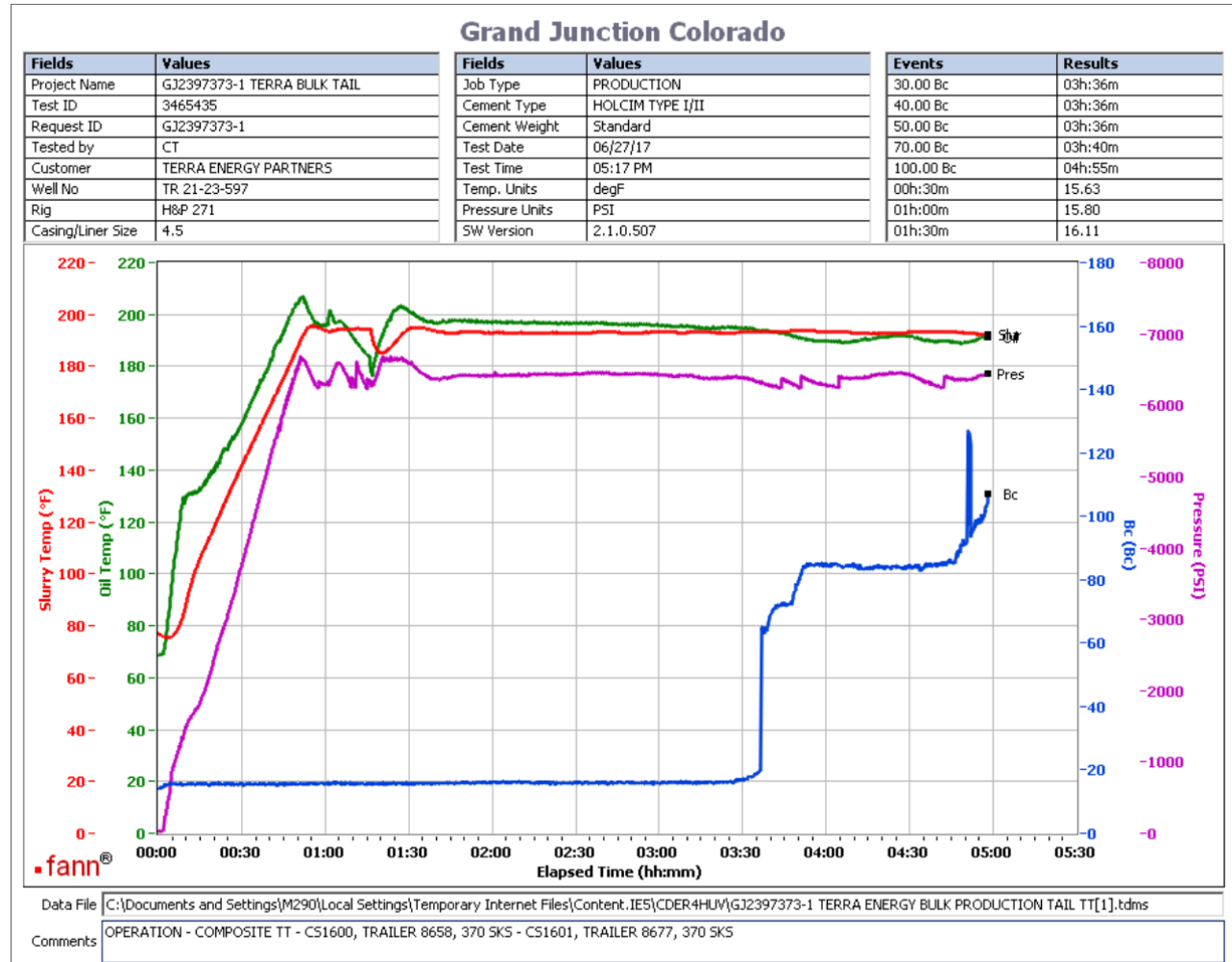
<u>Conc</u>	<u>UOM</u>	<u>Cement/Additive</u>	<u>Sample Type</u>	<u>Sample Date</u>	<u>Lot No.</u>	Cement Properties		
		NeoCem Tail				Slurry Density	13	lbm/gal
						Slurry Yield	2.065	ft3/sack
						Water Requirement	9.424	gal/sack
						Total Mix Fluid	9.424	gal/sack
						Water Source	Fresh Water	
						Water Chloride		

This report is the property of Halliburton Energy Services and neither it nor any part thereof, nor a copy thereof, is to be published or disclosed without first securing the expressed written approval of Halliburton. It may however be used in the course of regular business operations by any person or concern receiving such report from Halliburton. This report is for information purposes only and the content is limited to the sample described. Halliburton makes no warranties, expressed or implied, as to the accuracy of the contents or results. Any user of this report agrees Halliburton shall not be liable for any loss or damage regardless of cause, including any act or omission of Halliburton, resulting from the use hereof.

Thickening Time - ON-OFF-ON

28/JUN/2017

Test Temp (°F)	Pressure (psi)	Reached in (min)	30 Bc (hh:min)	50 Bc (hh:min)	70 Bc (hh:min)	100 Bc (hh:min)	Start Bc	Stirring before stop (mins)	Static Period (min)	Peak reading (BC)
193	6460	51	3:36	3:36	3:40	4:55	14	61	15	16



Total sks = 865
 Composite:
 CS1600, Trailer 8658, 370 sks
 CS1601, Trailer 8677, 370 sks
 Deflected 15-- > 16

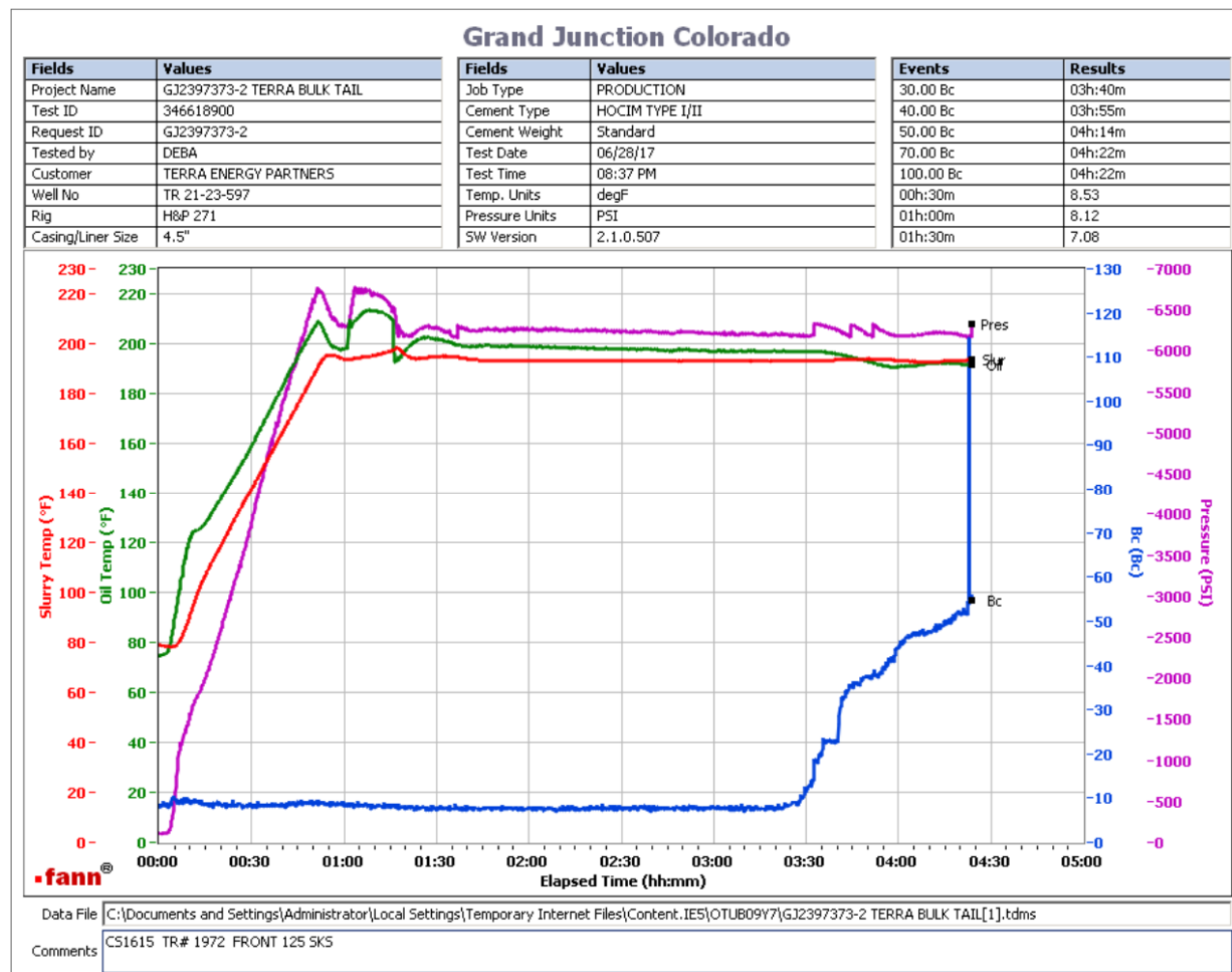
This report is the property of Halliburton Energy Services and neither it nor any part thereof, nor a copy thereof, is to be published or disclosed without first securing the expressed written approval of Halliburton. It may however be used in the course of regular business operations by any person or concern receiving such report from Halliburton. This report is for information purposes only and the content is limited to the sample described. Halliburton makes no warranties, expressed or implied, as to the accuracy of the contents or results. Any user of this report agrees Halliburton shall not be liable for any loss or damage regardless of cause, including any act or omission of Halliburton, resulting from the use hereof.

Operation Test Results Request ID 2397373/2

Thickening Time - ON-OFF-ON

28/JUN/2017

Test Temp (°F)	Pressure (psi)	Reached in (min)	30 Bc (hh:mm)	50 Bc (hh:mm)	70 Bc (hh:mm)	100 Bc (hh:mm)	Start Bc	Stirring before stop (mins)	Static Period (min)	Peak reading (BC)
193	6460	51	3:40	4:14	4:22	4:22	8	61	15	8



Total sks
CS1615 TR#1972 Front 125 SKS
No deflection was observed.

This report is the property of Halliburton Energy Services and neither it nor any part thereof, nor a copy thereof, is to be published or disclosed without first securing the expressed written approval of Halliburton. It may however be used in the course of regular business operations by any person or concern receiving such report from Halliburton. This report is for information purposes only and the content is limited to the sample described. Halliburton makes no warranties, expressed or implied, as to the accuracy of the contents or results. Any user of this report agrees Halliburton shall not be liable for any loss or damage regardless of cause, including any act or omission of Halliburton, resulting from the use hereof.