

# HALLIBURTON

iCem<sup>®</sup> Service

## **Terra Energy Partners**

**For: Terra**

Date: Wednesday, May 10, 2017

**TR 522-23-597 Surface PJR**

API# 05-045-23459-00

Sincerely,

**Grand Junction Cement Engineering**

## 2.0 Real-Time Job Summary

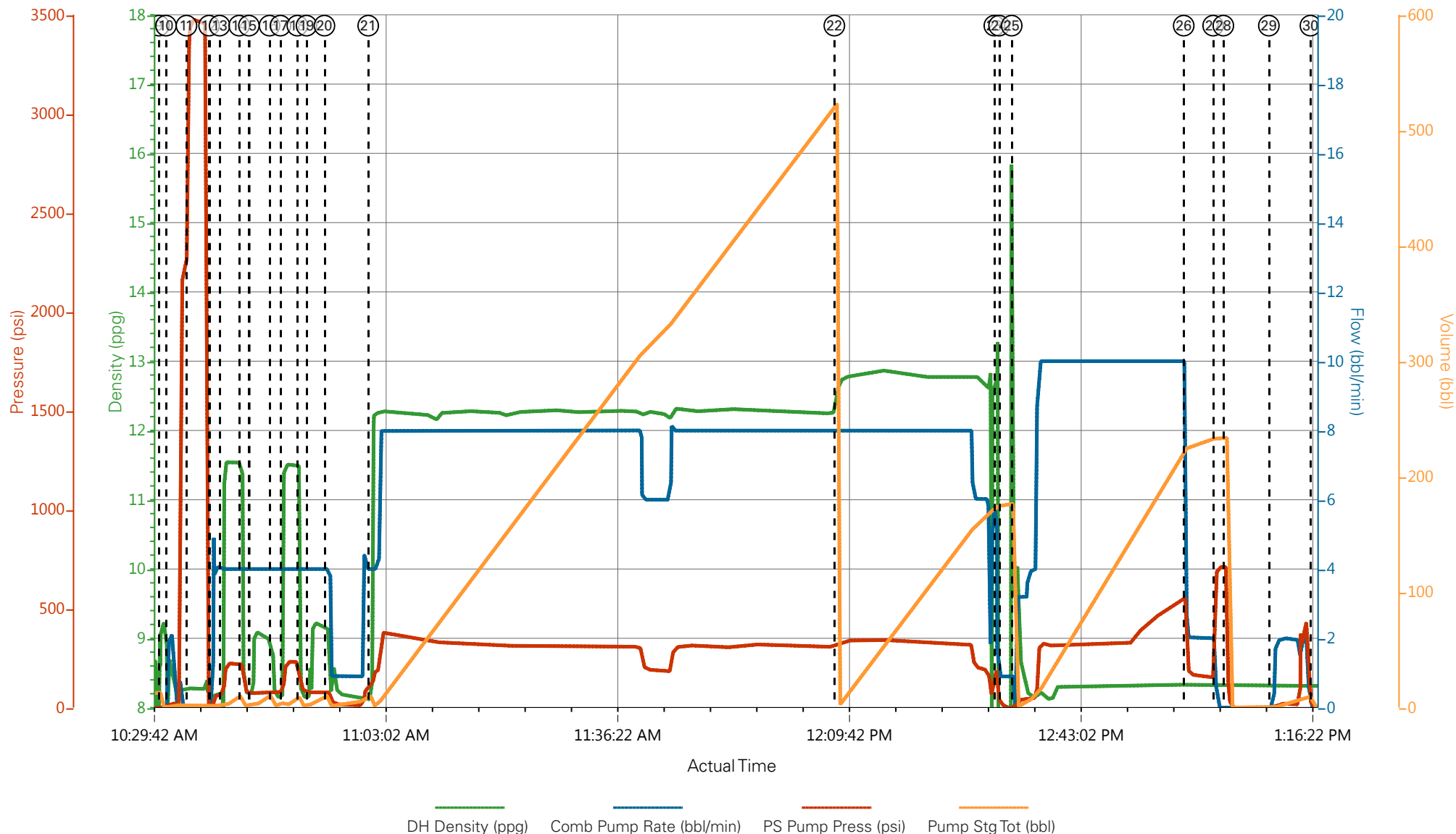
## 2.1 Job Event Log

Type	Seq. No.	Graph Label	Date	Time	Source	DH Density (ppg)	Comb Pump Rate (bbl/min)	PS Pump Press (psi)	Pump Stg Tot (bbl)	Comments
Event	1	Call Out	5/10/2017	03:30:00	USER					CALLED OUT @ 0330 REQUESTED ON LOCATION WAS @ 0630
Event	2	Pre-Convoy Safety Meeting	5/10/2017	05:00:00	USER					ALL HES EMPLOYEES
Event	3	Arrive At Loc	5/10/2017	09:00:00	USER					ARRIVED ON LOCATION @ 900 RIG ON BOTTOM WITH CASING SINCE 0730 RIG WAITING ON HES
Event	4	Meet With Company Rep	5/10/2017	09:05:00	USER					COMPANY REP OFFERED SDS WATER TEST: TEMP: 60 PH: 7 CHLORIDES:0
Event	5	Assessment Of Location Safety Meeting	5/10/2017	09:15:00	USER					ALL HES EMPLOYEES
Event	6	Pre-Rig Up Safety Meeting	5/10/2017	09:20:00	USER					ALL HES EMPLOYEES
Event	7	Rig-Up Equipment	5/10/2017	09:30:00	USER					1 HT-400 PUMP TRUCK (ELITE#8) 1 660 BULK TRUCK 1 TRANSPORT 3 SILOS 1 F-550 PICKUP
Event	8	Pre-Job Safety Meeting	5/10/2017	10:00:00	USER					ALL HES EMPLOYEES AND RIG CREW RIG CIRCULATED @ 7.8 BPM PRIOR TO THE JOB AND PUMPED CASING CAPACITY BEFORE SHUTTING DOWN / NO RETURNS
Event	9	Start Job	5/10/2017	10:30:52	COM5					TD: 2968 TP: 2971.05 SJ: 24.05 CSG: 9 5/8 36# J-55 OH: 14 3/4 MUD WT: 8.6 PPG
Event	10	Prime Lines	5/10/2017	10:31:52	COM5	8.33	2.0	20	2.0	PRIME LINES WITH 2 BBLS FRESH WATER
Event	11	Test Lines	5/10/2017	10:34:49	COM5	8.33	0.0	3535	2.0	PRESSURE TEST OK

Event	12	Pump H2O	5/10/2017	10:38:04	COM5	8.33	4.0	80	5.0	PUMP 5 BBL FRESH WATER SPACER
Event	13	Pump Super Flush	5/10/2017	10:39:35	COM5	11.7	4.0	150	10	PUMP 10 BBL SUPER FLUSH 100 SPACER
Event	14	Pump H2O	5/10/2017	10:42:24	COM5	8.33	4.0	72	5.0	PUMP 5 BBL FRESH WATER SPACER
Event	15	Pump CaCl H2O	5/10/2017	10:43:48	COM5	9.4	4.0	86	10.0	PUMP 10 BBL CALCIUM CHLORIDE SPACER
Event	16	Pump H2O	5/10/2017	10:46:46	COM5	8.33	4.0	80	5.0	PUMP 5 BBL FRESH WATER SPACER
Event	17	Pump Super Flush	5/10/2017	10:48:20	COM5	11.7	4.0	250	10	PUMP 10 BBL SUPER FLUSH 100 SPACER
Event	18	Pump H2O	5/10/2017	10:50:46	COM5	8.33	4.0	80	5.0	PUMP 5 BBL FRESH WATER SPACER
Event	19	Pump CaCl H2O	5/10/2017	10:52:05	COM5	9.4	4.0	80	10.0	PUMP 10 BBL CALCIUM CHLORIDE SPACER
Event	20	Pump H2O	5/10/2017	10:54:40	COM5	8.33	4.0	110	10.0	PUMP 10 BBL FRESH WATER SPACER
Event	21	Pump Lead Cement	5/10/2017	11:00:58	COM5	12.3	8.0	350	498.1	1175 SKS 12.3 PPG 2.38 YIELD 13.76 GAL/SK LEAD CEMENT WEIGHT VERIFIED VIA PRESSURIZED MUD SCALES 6 BOXES TUF FIBER ADDED THROUGHOUT LEAD
Event	22	Pump Tail Cement	5/10/2017	12:08:02	COM5	12.8	8.0	340	129.6	345 SKS 12.8 PPG 2.11 YIELD 11.78 GAL/SK TAIL CEMENT WEIGHT VERIFIED VIA PRESSURIZED MUD SCALES
Event	23	Shutdown	5/10/2017	12:31:03	COM5					SHUTDOWN TO DROP TOP PLUG
Event	24	Drop Top Plug	5/10/2017	12:31:44	COM5					PLUG AWAY NO PROBLEMS WASHED UP ON TOP OF THE PLUG AS PER COMPANY REP
Event	25	Pump Displacement	5/10/2017	12:33:33	COM5	8.33	10.0	550	227.8	FRESH WATER DISPLACEMENT
Event	26	Slow Rate	5/10/2017	12:58:18	COM5	8.33	2.0	150	217	SLOW RATE TO BUMP PLUG
Event	27	Bump Plug	5/10/2017	13:02:32	COM5	8.33	2.0	710	227.8	PSI BEFORE BUMPING PLUG @ 150 BUMPED PLUG UP TO 710
Event	28	Check Floats	5/10/2017	13:04:00	COM5					FLOATS HELD, 1 BBL BACK TO DISPLACEMENT TANKS
Event	29	Clear Parasite	5/10/2017	13:10:33	COM5	8.33	2.0	410	10	PUMP 10 BBL SUGAR WATER TO CLEAR PARASITE

STRING										
Event	30	End Job	5/10/2017	13:16:32	COM5	NO RETURNS DURING JOB PIPE STATIC THROUGHOUT JOB				
Event	31	Start Job	5/10/2017	13:38:00	COM5	TOP OUT WELL CHEVRON TR 423-23-597				
Event	32	Prime Lines	5/10/2017	13:40:00	COM5	8.33	0.0	0	2.0	PRIME LINES WITH FRESH WATER
Event	33	Pump Cement	5/10/2017	13:42:12	COM5	15.6	2.8	120	28.2	133 SKS (28.2 BBLS) 15.6 PPG 1.19 YIELD 5.24 GAL/SK CEMENT WEIGHT VERIFIED VIA PRESSURIZED MUD SCALES
Event	34	Clean Lines	5/10/2017	13:58:33	COM5	8.33	2.8		2	CLEAR LINES
Event	35	End Job	5/10/2017	14:01:16	COM5	END JOB, CEMENT TO SURFACE ON WELL CHEVRON TR 423-23-597				
Event	36	Start Job	5/10/2017	15:09:00	COM5	TOP OUT ON CHEVRON TR 522-23-597				
Event	37	Pump Cement	5/10/2017	15:09:57	COM5	15.6	2.8	150	17	PUMP 80 SKS (17 BBLS) 15.6 PPG 1.19 YIELD 5.24 GAL/SK CEMENT WEIGHT VERIFIED VIA PRESSURIZED MUD SCALES 5 BBLS SUPER FLUSH TRICKLED DOWN THE BACKS SIDE WHILE PUMPING CEMENT AND 2 BAGS CALCIUM CHLORIDE ADDED TO CEMENT WHILE PUMPING
Event	38	Clean Lines	5/10/2017	15:18:01	COM5	8.33	2.8		2.0	CLEAR LINES TO CELLAR
Event	39	End Job	5/10/2017	15:24:40	COM5	CEMENT RETURNS TO SURFACE				
Event	40	Pre-Rig Down Safety Meeting	5/10/2017	15:30:00	USER	ALL HES EMPLOYEES				
Event	41	Rig-Down Equipment	5/10/2017	15:45:00	USER					
Event	42	Pre-Convoy Safety Meeting	5/10/2017	16:25:00	USER	ALL HES EMPLOYEES				
Event	43	Crew Leave Location	5/10/2017	16:30:00	USER	THANK YOU FOR USING HALLIBURTON CEMENT, DUSTIN SMITH AND CREW				

# TEP - CHEVRON TR 522-23-597 - 9 5/8 SURFACE



- |   |                          |                    |                     |                      |                |
|---|--------------------------|--------------------|---------------------|----------------------|----------------|
| ① Call Out                              | ⑦ Rig-Up Equipment       | ⑬ Pump Super Flush | ⑰ Pump CaCl H2O     | 25 Pump Displacement | 31 Start Job   |
| ② Pre-Convoy Safety Meeting             | ⑧ Pre-Job Safety Meeting | ⑭ Pump H2O         | 20 Pump H2O         | 26 Slow Rate         | 32 Prime Lines |
| ③ Arrive At Loc                         | ⑨ Start Job              | ⑮ Pump CaCl H2O    | 21 Pump Lead Cement | 27 Bump Plug         | 33 Pump Cement |
| ④ Meet With Company Rep                 | ⑩ Prime Lines            | ⑯ Pump H2O         | 22 Pump Tail Cement | 28 Check Floats      | 34 Clean Lines |
| ⑤ Assessment Of Location Safety Meeting | ⑪ Test Lines             | ⑱ Pump Super Flush | 23 Shutdown         | 29 Clear Parasite    | 35 End Job     |
| ⑥ Pre-Rig Up Safety Meeting             | ⑫ Pump H2O               | ⑲ Pump H2O         | 24 DropTop Plug     | 30 End Job           |                |

▼ **HALLIBURTON** | iCem® Service

Created: 2017-05-10 03:57:15, Version: 4.2.393

Edit

Customer: TEP ROCKY MOUNTAIN LLC

Job Date: 5/10/2017 9:49:18 AM

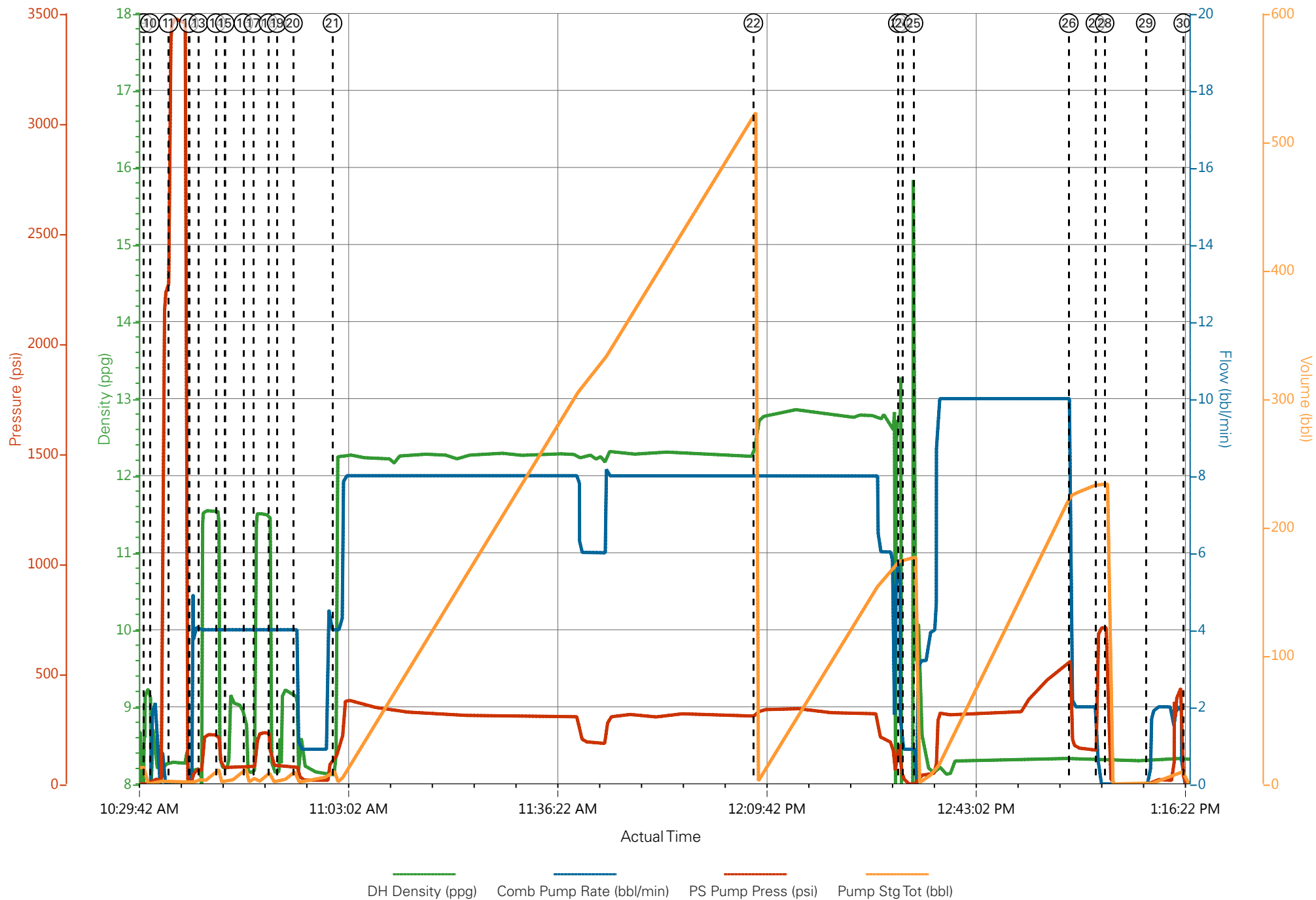
Well: CHEVRON TR 522-23-597

Representative: DALEN BURR

Sales Order #: 0904023499

ELITE # 8: DUSTIN SMITH / DAVID CAMPBELL

# TEP - CHEVRON TR 522-23-597 - 9 5/8 SURFACE



# TEP - CHEVRON TR 522-23-597 - TOP OUT

