

HALLIBURTON

iCem[®] Service

TERRA ENERGY PARTNERS

For: Terra

Date: Saturday, May 13, 2017

TR 22-23-597 Surface PJR

API# 05-045-23464-00

Sincerely,

Grand Junction Cement Engineering

2.0 Real-Time Job Summary

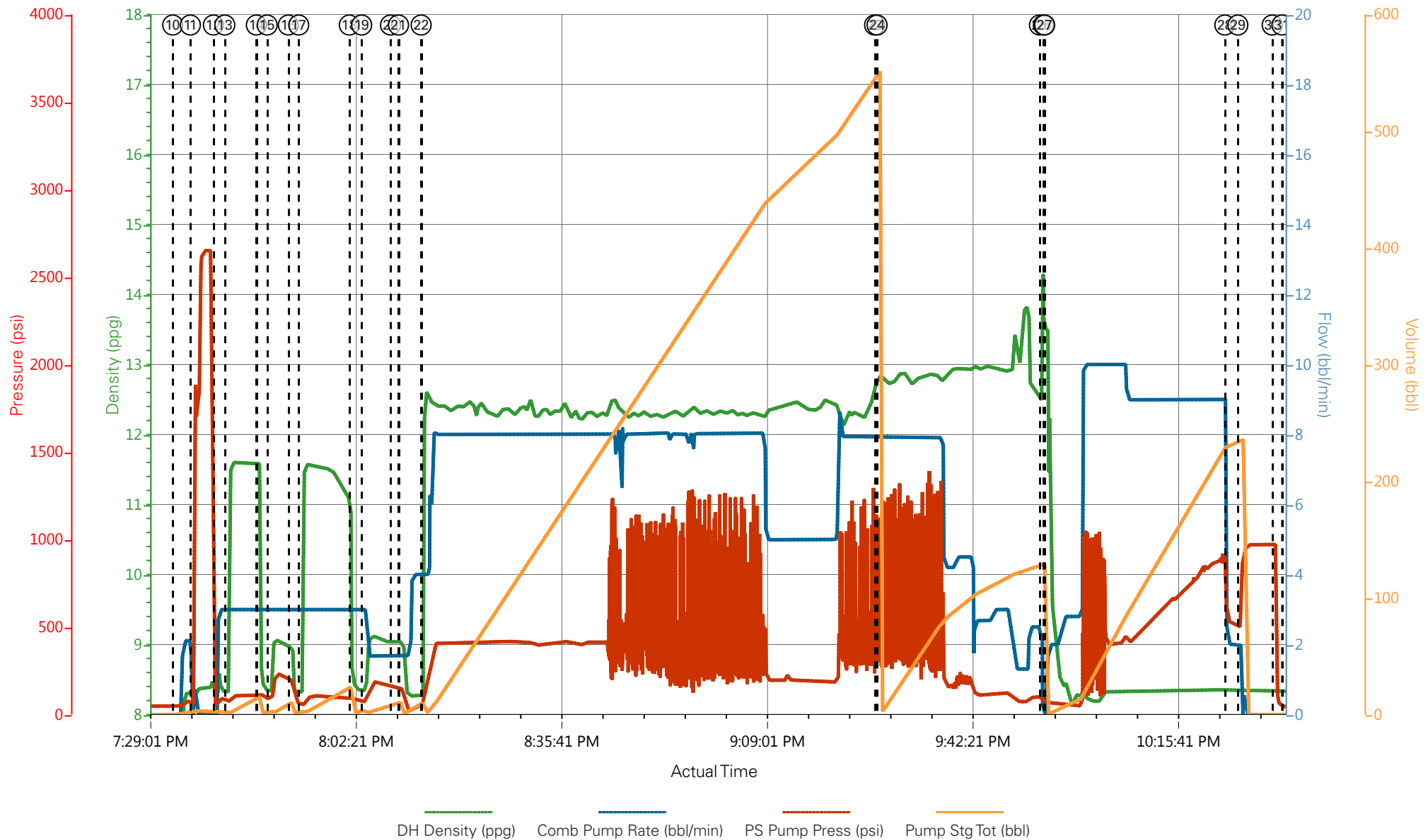
2.1 Job Event Log

Type	Seq. No.	Graph Label	Date	Time	Source	DH Density (ppg)	Comb Pump Rate (bbl/min)	PS Pump Press (psi)	Pump Stg Tot (bbl)	Comments
Event	1	Pre-Convoy Safety Meeting	5/12/2017	03:45:00	USER					CREW IN YARD PREPAIRING EQUIPMENT
Event	2	Crew Leave Yard	5/12/2017	04:00:00	USER					ALL HES PRESENT
Event	3	Call Out	5/12/2017	06:00:00	USER					CREW IN ROUTE
Event	4	Arrive at Location from Service Center	5/12/2017	08:00:00	USER					RIG RUNNING CASING, OFF LOADED LAST HAUL
Event	5	Assessment Of Location Safety Meeting	5/12/2017	09:30:00	USER					MET WITH COMPANY REP DISCUSSED JOB PROCEDURE, OFFERED SDS
Event	6	Pre-Rig Up Safety Meeting	5/12/2017	16:00:00	USER					ALL HES PRESENT, TRANSPORT BROUGHT ONTO LOCATION
Event	7	Rig-Up Completed	5/12/2017	18:45:00	USER					1-ELITE, 1-660 BULK TRAILER, 1-TRANSPORT, 3-FIELD SILO, 2" PUMP IRON, 4" HOSE, 9.625" QUICK LATCH PLUG CONTAINER
Event	8	Pre-Job Safety Meeting	5/12/2017	19:00:00	USER					ALL HES AND RIG CREW PRESENT
Event	9	Other	5/12/2017	19:15:00	USER					H2O:TEMP-50, CL-0, PH-7.5. RIG PUMPED 250 BBLS BEFORE JOB AND SAW NO RETURNS
Event	10	Start Job	5/12/2017	19:33:08	COM5	8.33	0.00	8.00	0.0	TD-3013', TP-3017.47' SET AT 3013', SJ-27.77', OH-14.75", CSG-9.625" J55 36#, CNDT-119', 18", MUD-8.6PPG
Event	11	Test Lines	5/12/2017	19:36:00	COM5	8.32	0.00	2657.00	3.0	ALL PRESSURE HELD ON LINES
Event	12	FRESH WATER	5/12/2017	19:39:44	COM5	8.32	3.00	52.00	5.0	FRESH WATER

Event	13	SUPER FLUSH 100	5/12/2017	19:41:35	COM5	11.60	3.00	110.00	10.0	SUPER FLUSH 100 10 BBLS
Event	14	FRESH WATER	5/12/2017	19:46:42	COM5	8.33	3.00	109.00	5.0	FRESH WATER
Event	15	CALCIUM CHLORIDE WATER	5/12/2017	19:48:27	COM5	9.00	3.00	230.00	10.0	CALCIUM CHLORIDE WATER
Event	16	FRESH WATER	5/12/2017	19:51:53	COM5	8.33	3.00	60.00	5.0	FRESH WATER
Event	17	SUPER FLUSH 100	5/12/2017	19:53:34	COM5	11.60	3.00	100.00	10.0	SUPER FLUSH 100 10 BBLS
Event	18	FRESH WATER	5/12/2017	20:01:46	COM5	8.33	3.00	70.00	5.0	FRESH WATER
Event	19	CALCIUM CHLORIDE WATER	5/12/2017	20:03:47	COM5	9.00	3.00	182.00	10.0	CALCIUM CHLORIDE WATER
Event	20	Check weight	5/12/2017	20:08:27	COM5					WEIGHT VERIFIED WITH PRESSURIZED MUD SCALES
Event	21	FRESH WATER	5/12/2017	20:09:45	COM5	8.33	1.70	148.00	10.0	FRESH WATER
Event	22	Pump Lead Cement	5/12/2017	20:13:25	COM5	12.30	8.00	550.0	498.1	VARICEM LEAD 1175 SKS, 12.30 PPG, 2.38CF/SK, 13.76GAL/SK, 60 LBS TUFF FIBER ADDED THROUGH OUT LEAD
Event	23	Check weight	5/12/2017	21:26:57	COM5					WEIGHT VERIFIED WITH PRESSURIZED MUD SCALES
Event	24	Pump Tail Cement	5/12/2017	21:27:21	COM5	12.80	8.00	470.00	129.6	VARICEM TAIL 345 SKS, 12.8 PPG, 2.11 CF/SK, 11.78 GAL/SK
Event	25	Shutdown	5/12/2017	21:53:41	USER					
Event	26	Drop Top Plug	5/12/2017	21:54:19	USER					PLUG AWAY
Event	27	Pump Displacement	5/12/2017	21:54:31	COM5	8.33	10.00	970.00	231.1	FRESH WATER
Event	28	Slow Rate	5/12/2017	22:23:44	USER	8.34	2.00	532.00	221.0	SLOW RATE LAST 10 BBLS
Event	29	Bump Plug	5/12/2017	22:25:51	COM5	8.34	2.00	505.00	231.1	PLUG BUMPED 505 PSI
Event	30	Check Floats	5/12/2017	22:31:25	USER	8.35	0.00	970.00	0.0	FLOATS HELD, 1 BBL BACK TO DISPLACEMENT TANK
Event	31	End Job	5/12/2017	22:33:00	USER	8.33	0.00	46.00	0.0	NO RETURNS

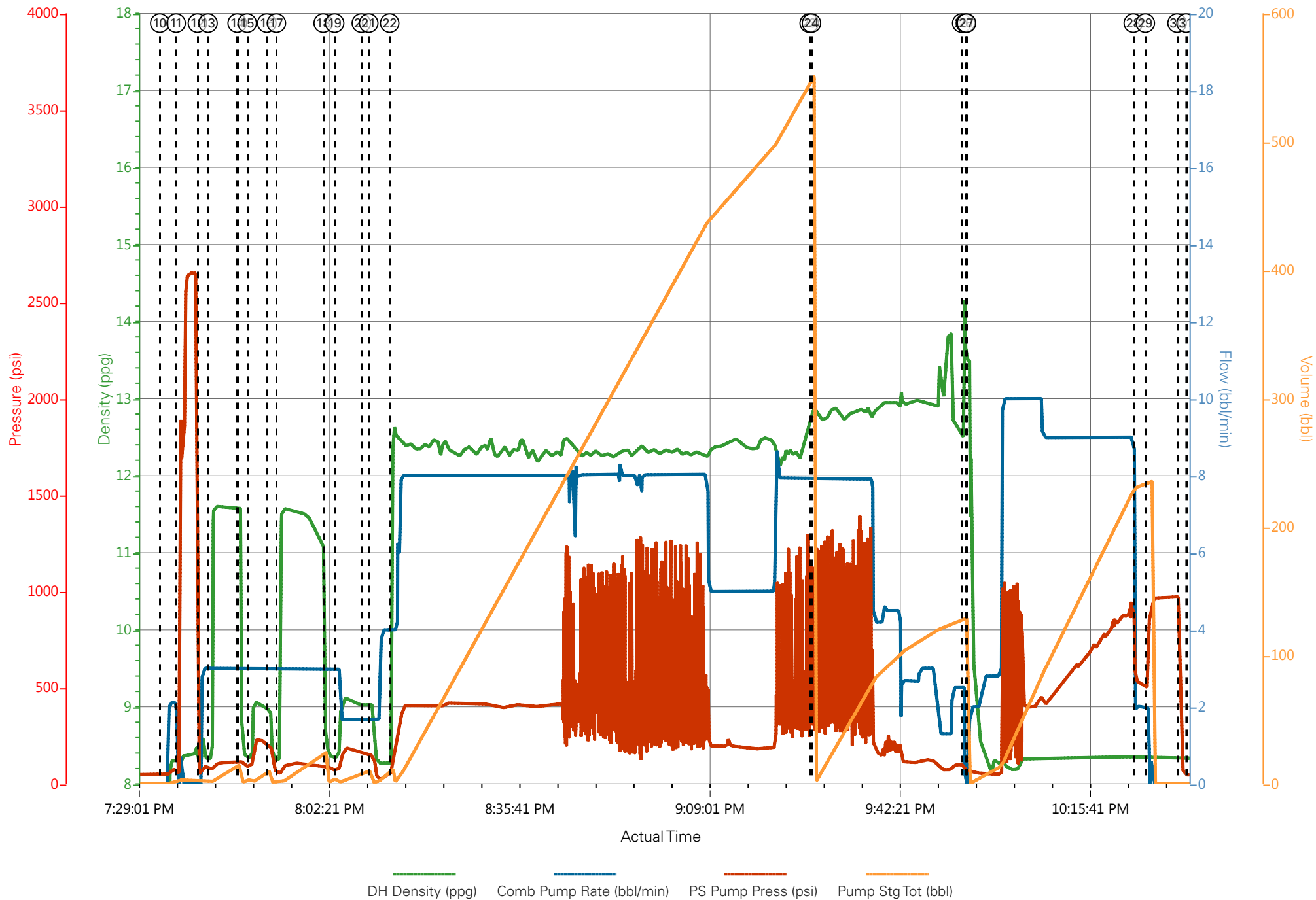
Event	32	CLEAR PARASITE	5/12/2017	22:46:52	COM5					10 BBLS SUGAR WATER TO CLEAR PARASITE LINE, TOP PRESSURE 800PSI
Event	33	Check weight	5/13/2017	01:49:17	COM5	8.33	0.00	45.00	0.0	
Event	34	Pump Cement	5/13/2017	01:50:37	USER	15.60	2.00	152.00	15.0	TOP OUT CEMENT 108 SKS, 15.6 PPG, 1.19 CF/SK, 5.24 GAL/K. 1 BAG CACL USED. REMAINING CEMENT ON TRUCK PUMPED TO PIT
Event	35	Pump Spacer	5/13/2017	02:00:12	USER	8.33	0.90	70.00	1.5	FRESH WATER BEHIND TO CLEAR LINES
Event	36	Pre-Rig Down Safety Meeting	5/13/2017	02:05:00	USER					ALL HES PRESENT
Event	37	End Job	5/13/2017	02:07:31	USER					CEMENT TO SURFACE
Event	38	Rig-Down Completed	5/13/2017	02:45:00	USER					
Event	39	Pre-Convoy Safety Meeting	5/13/2017	03:00:00	USER					ALL HES PRESENT
Event	40	Crew Leave Location	5/13/2017	03:15:00	USER					THANK YOU FOR CHOOSING HALLIBURTON, ANDREW BRENNECKE AND CREW

TEP - CHEVRON TR 22-23-597 - 9.625" SURFACE

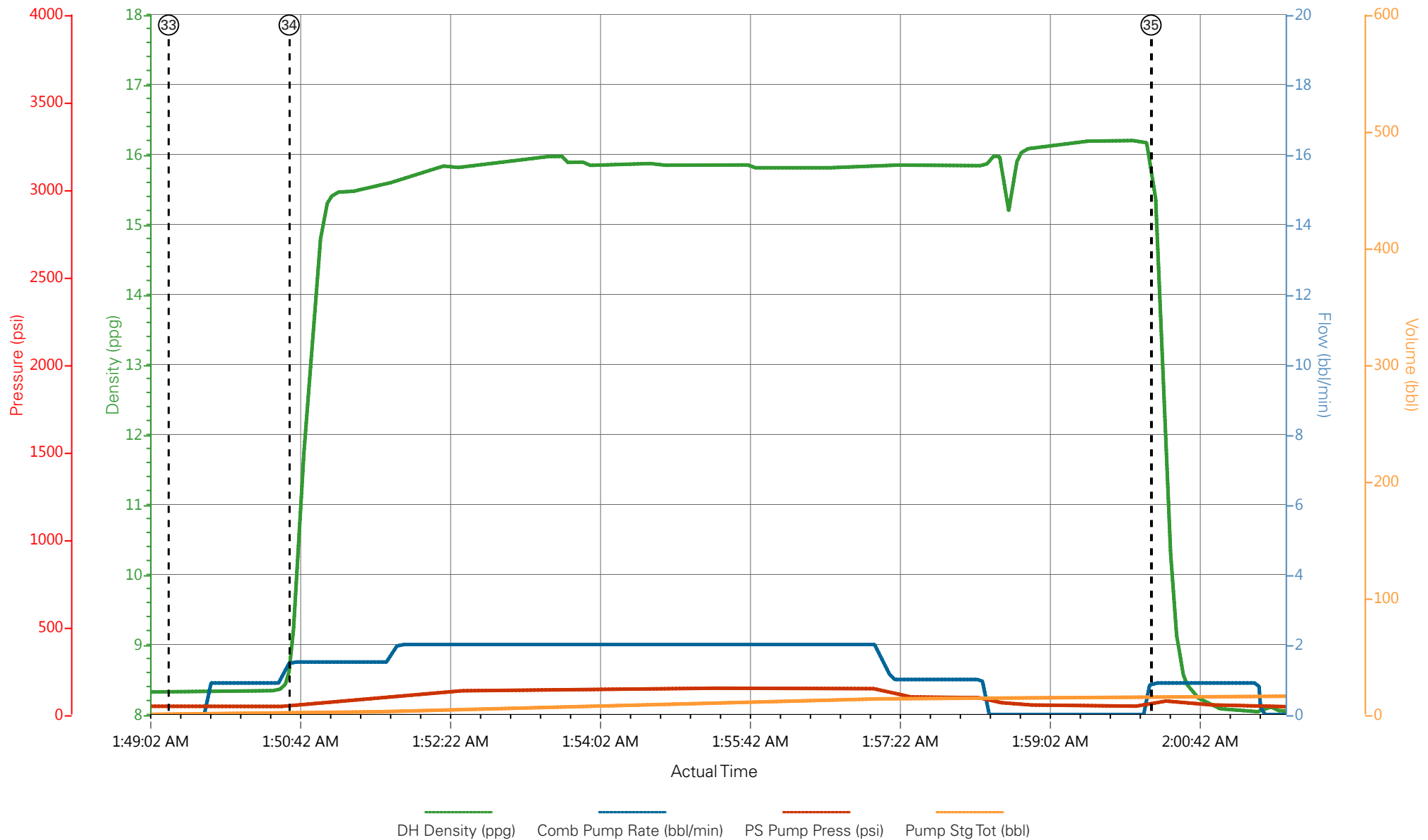


- | | | | | |
|--|---|-----------------------------|--|---------|
| ① Pre-Convoy Safety Meeting n/a;n/a;n/a;n/a | ⑤ Assessment Of Location Safety Meeting n/a;n/a;n/a;n/a | ⑨ Other 8.31;0;51;0 | ⑬ SUPER FLUSH 100 8.33;3;85;0 | ⑰ SUPER |
| ② Crew Leave Yard n/a;n/a;n/a;n/a | ⑥ Pre-Rig Up Safety Meeting n/a;n/a;n/a;n/a | ⑩ Start Job -0.14;0;48;0 | ⑭ FRESH WATER 11.58;3;109;0 | ⑱ FRESH |
| ③ Call Out n/a;n/a;n/a;n/a | ⑦ Rig-Up Completed n/a;n/a;n/a;n/a | ⑪ Test Lines 8.32;0;57;3 | ⑮ CALCIUM CHLORIDE WATER 8.33;3;97;5.2 | ⑲ CALCI |
| ④ Arrive at Location from Service Center n/a;n/a;n/a;n/a | ⑧ Pre-Job Safety Meeting 8.31;0;51;0 | ⑫ FRESH WATER 8.32;0;52;3.1 | ⑯ FRESH WATER 8.94;3;195;10.2 | ⑳ Check |

TEP - CHEVRON TR 22-23-597 - 9.625" SURFACE



TEP - CHEVRON TR 22-23-597 - TOP OUT



① Pre-Convoy Safety Meeting n/a;n/a;n/a;n/a	⑤ Assessment Of Location Safety Meeting n/a;n/a;n/a;n/a	⑨ Other 8.31;0;51;0	⑬ SUPER FLUSH 100 8.33;3;85;0	⑰ SUPER
② Crew Leave Yard n/a;n/a;n/a;n/a	⑥ Pre-Rig Up Safety Meeting n/a;n/a;n/a;n/a	⑩ Start Job -0.14;0;48;0	⑭ FRESH WATER 11.58;3;109;0	⑱ FRESH
③ Call Out n/a;n/a;n/a;n/a	⑦ Rig-Up Completed n/a;n/a;n/a;n/a	⑪ Test Lines 8.32;0;57;3	⑮ CALCIUM CHLORIDE WATER 8.33;3;97;5.2	⑲ CALCI
④ Arrive at Location from Service Center n/a;n/a;n/a;n/a	⑧ Pre-Job Safety Meeting 8.31;0;51;0	⑫ FRESH WATER 8.32;0;52;3.1	⑯ FRESH WATER 8.94;3;194;0	20 Check

TEP - CHEVRON TR 22-23-597 - TOP OUT

