



August 9, 2017

Mr. Matt Lepore, Director  
Colorado Oil and Gas Conservation Commission  
The Chancery Building  
1120 Lincoln Street, Suite 801  
Denver, CO 80203

RE: Anschutz-Williams 5-61-27-6457BSB (doc #401336612)  
Township 5 North, Range 61 West, 6th P.M.  
Section 27: S W S W (surface location)  
Weld County, Colorado

Proposed Wellbore Unit (640 acres):

Township 5 North, Range 61 West, 6<sup>th</sup> P.M.  
Section 26- S2S2  
Section 27- S2S2  
Township 5 North, Range 61 West, 6<sup>th</sup> P.M.  
Section 34- N2N2  
Section 35- N2N2

Dear Mr. Lepore:

Bill Barrett Corporation ("BBC") is planning to drill the captioned boundary well in accordance with the provisions of COGCC 318A.e.

BBC's wellbore spacing unit consists of Section 26-S2S2, Section 27-S2S2 of T5N-61W and Section 34-N2N2, Section 35-N2N2 of T5N-61W, creating the above referenced spacing unit in which we will target the Niobrara formation. I certify that all of the owners within the proposed wellbore spacing unit were noticed and no objections were received.

Enclosed is a copy of the following document to assist you in your review and approval of BBC's proposed changes for the captioned well.

- Plat illustrating the proposed wellbore spacing unit on existing location plat

Thank you for your attention to the enclosed. BBC respectfully requests that the COGCC review the enclosed information and approve the proposed changes for the captioned well.

**BILL BARRETT CORPORATION**

A handwritten signature in blue ink that reads "Matt Barber".

**Matt Barber**  
Sr. Permit Analyst

1099 18<sup>th</sup> Street, Suite  
2300  
Denver, CO 80202  
P 303.293.9100  
F 303.291.0420

T5N, R61W, 6th P.M.

BILL BARRETT CORPORATION

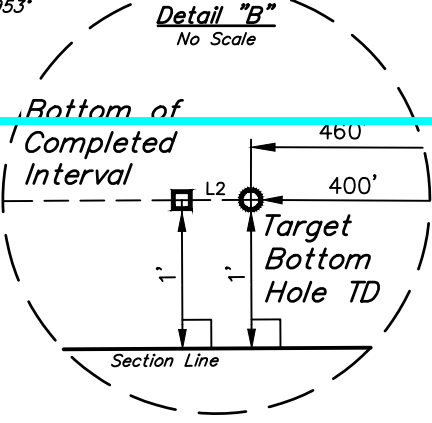
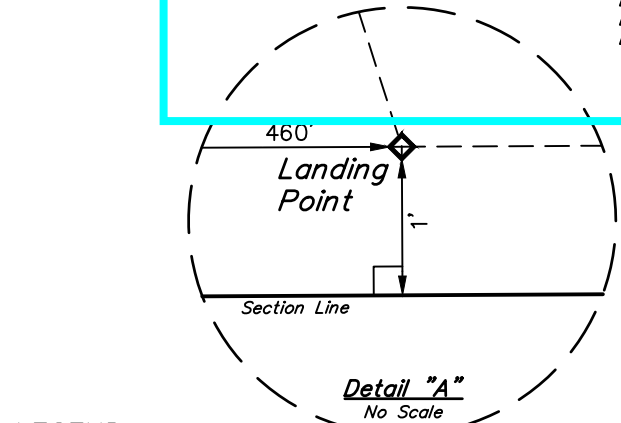
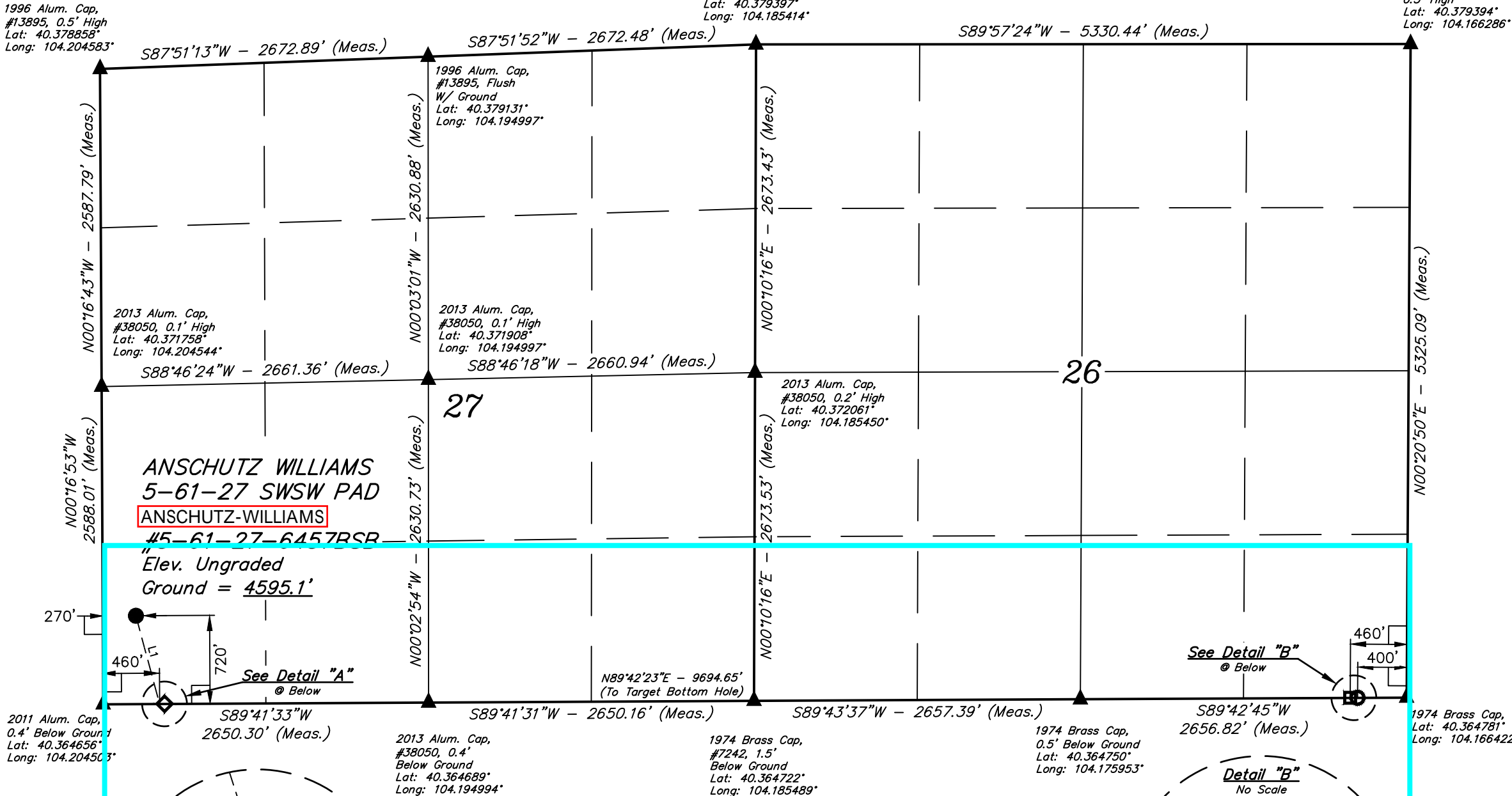
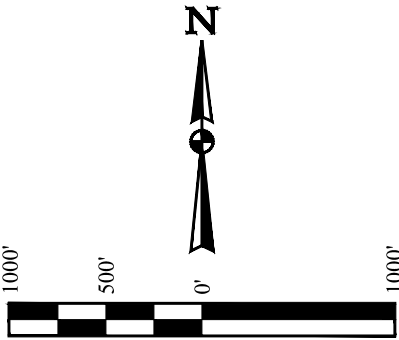
ANSCHUTZ WILLIAMS 5-61-27 SWSW PAD  
ANSCHUTZ-WILLIAMS #5-61-27-6457BSB  
SW 1/4 SW 1/4, SECTION 27, T5N, R61W, 6th P.M.  
WELD COUNTY, COLORADO

BASIS OF BEARINGS

BASIS OF BEARINGS IS A G.P.S. OBSERVATION

BASIS OF ELEVATION

SPOT ELEVATION LOCATED AT THE NORTHEAST CORNER OF SECTION 24, T5N, R62W, 6th. P.M. TAKEN FROM THE POINT OF ROCKS, QUADRANGLE, COLORADO, WELD COUNTY, 7.5 MINUTE QUAD (TOPOGRAPHIC MAP) PUBLISHED BY THE UNITED STATES DEPARTMENT OF THE INTERIOR, GEOLOGICAL SURVEY. SAID ELEVATION IS MARKED AS BEING 4530 FEET.



LINE TABLE		
LINE	DIRECTION	LENGTH
L1	S15°04'46\"E	743.35'
L2	S89°42'45\"W	60.00'

NAD 83 (SURFACE LOCATION)	NAD 83 (LANDING POINT)	NAD 83 (BTM. OF COMPLETED INT.)	NAD 83 (TARGET BOTTOM HOLE TD)
LATITUDE = 40°21'59.88\" (40.366633)	LATITUDE = 40°21'52.79\" (40.364664)	LATITUDE = 40°21'53.20\" (40.364778)	LATITUDE = 40°21'53.20\" (40.364778)
LONGITUDE = 104°12'12.77\" (104.203547)	LONGITUDE = 104°12'10.27\" (104.202853)	LONGITUDE = 104°10'05.06\" (104.168072)	LONGITUDE = 104°10'04.29\" (104.167858)
NAD 27 (SURFACE LOCATION)	NAD 27 (LANDING POINT)	NAD 27 (BTM. OF COMPLETED INT.)	NAD 27 (TARGET BOTTOM HOLE TD)
LATITUDE = 40°21'59.95\" (40.366653)	LATITUDE = 40°21'52.86\" (40.364683)	LATITUDE = 40°21'53.26\" (40.364794)	LATITUDE = 40°21'53.27\" (40.364797)
LONGITUDE = 104°12'10.94\" (104.203039)	LONGITUDE = 104°12'08.45\" (104.202347)	LONGITUDE = 104°10'03.24\" (104.167567)	LONGITUDE = 104°10'02.46\" (104.167350)
STATE PLANE NAD 83 (CO. NORTH)	STATE PLANE NAD 83 (CO. NORTH)	STATE PLANE NAD 83 (CO. NORTH)	STATE PLANE NAD 83 (CO. NORTH)
N: 1379046.29 E: 3361240.71	N: 1378331.48 E: 3361444.05	N: 1378516.47 E: 3371134.41	N: 1378517.61 E: 3371194.39
STATE PLANE NAD 27 (CO. NORTH)	STATE PLANE NAD 27 (CO. NORTH)	STATE PLANE NAD 27 (CO. NORTH)	STATE PLANE NAD 27 (CO. NORTH)
N: 379048.16 E: 2361391.14	N: 378333.38 E: 2361594.49	N: 378518.33 E: 2371285.11	N: 378519.47 E: 2371345.09

CERTIFICATE  
THIS IS TO CERTIFY THAT THE ABOVE PLAT WAS PREPARED FROM FIELD NOTES OF ACTUAL SURVEYS MADE BY ME OR UNDER MY SUPERVISION AND THAT THE SAME ARE TRUE AND CORRECT TO THE BEST OF MY KNOWLEDGE AND BELIEF.

REGISTERED LAND SURVEYOR  
REGISTRATION NO. 28285  
STATE OF COLORADO  
JULY 17, 2017

REV: 2 07-19-17 C.C. (SHL CHANGE)



UELS, LLC  
Corporate Office \* 85 South 200 East  
Vernal, UT 84078 \* (435) 789-1017

SURVEYED BY	GREG WEIMER, N.P.	01-13-17	SCALE
DRAWN BY	C.C.	04-14-17	1\" = 1000'

WELL LOCATION PLAT

LEGEND:

- 90° SYMBOL
- PROPOSED WELLHEAD.
- LANDING POINT.
- BOTTOM OF COMPLETED INTERVAL.
- TARGET BOTTOM HOLE TD.
- SECTION CORNERS LOCATED. (NAD 83)