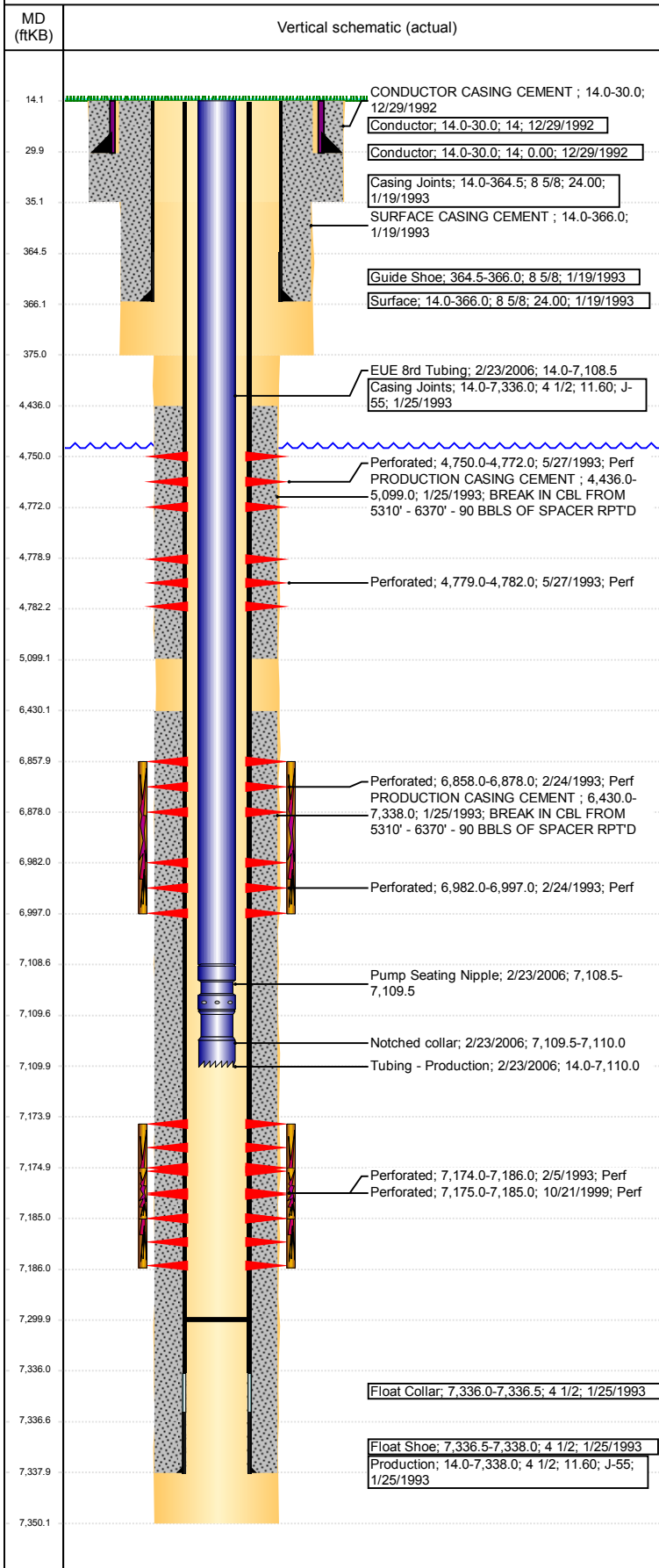


**Well Name: CAMENISCH-STRAIGHT 13-34**

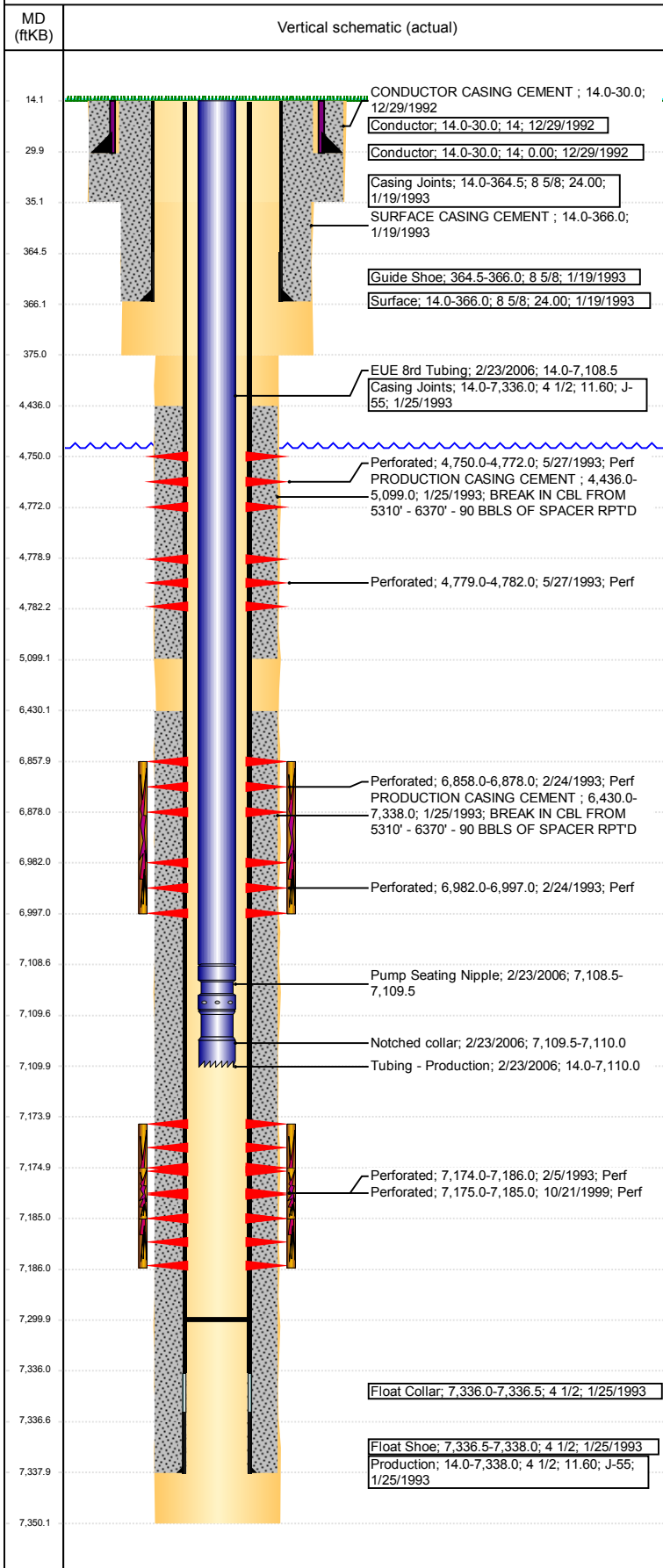
VERTICAL - ORIGINAL HOLE, 10/17/2017 2:00:04 PM



Well Header								
API 05-123-16522		Business Unit DJ BASIN		District 15	Well Config VERTICAL			
Original KB Elevation (ft) 4,692		KB - GL / MSL (ftKB) 14.00		Spud Date 12/29/1992		P & A Date		
Comment NO RECORD OF SHANNON ZONE BEING FRAC'D DURING RECOMPLETE JOB.								
Directions To Well								
Congressional Location								
Quarter 3 SW	Quarter 4 SW	Section 34	Township 5	Twntshp N/S Dir N	Range 66	Range E/W Dir W		
Bottom Hole Location								
North-South Distance (ft)		From N or S Line		East-West Distance (ft)		From E or W Line		
Plug Back Total Depths								
Date	Depth (ftKB)	Method		Com				
2/5/1993	7,282.0	CASED HOLE LOG		DEPTH LOGGER FROM CBL				
5/27/1993	7,285.0	TAG		CLEAN OUT				
2/22/2006	7,300.0	TAG		CLEAN OUT & LAND TBG				
Wellbore Sections								
Section Des		Size (in)		Act Top, MD (ftKB)		Act Btm, MD (ftKB)		
CONDUCTOR		16 1/2		14		35		
SURFACE		12 1/4		35		375		
PRODUCTION		7 7/8		375		7,350		
Zone Statuses								
Zone Name	Status Date	Status	Fluid Type	Job	Prod Method			
CODELL	3/14/1993	PR	Water	DRILLING/CO...	Flowing			
CODELL	11/2/1999	PR		RE-FRAC, 10/2...				
CODELL	8/18/2011	PR						
CODELL	11/29/2016	SI						
SHANNON	6/2/1993	PR	Water	RECOMPLETI...	Flowing			
NIOBRARA	3/14/1993	PR		DRILLING/CO...				
NIOBRARA	8/18/2011	PR						
Casing Strings								
Conductor, 30.0ftKB								
Casing Description Conductor		Run Date 12/29/1992	OD (in) 14	Wt/Len (l...)	Grade	Top, MD (ft...) 14.0	MD (ftKB) 30.0	
Surface, 366.0ftKB								
Casing Description Surface		Run Date 1/19/1993	OD (in) 8 5/8	Wt/Len (l...) 24.00	Grade	Top, MD (ft...) 14.0	MD (ftKB) 366.0	
Production, 7,338.0ftKB								
Casing Description Production		Run Date 1/25/1993	OD (in) 4 1/2	Wt/Len (l...) 11.60	Grade J-55	Top, MD (ft...) 14.0	MD (ftKB) 7,338.0	
Cement								
Description CONDUCTOR CASING CEMENT				Top Depth (ftKB) 14.0		Bottom Depth (ftKB) 30.0		
Description SURFACE CASING CEMENT				Top Depth (ftKB) 14.0		Bottom Depth (ftKB) 366.0		
Description PRODUCTION CASING CEMENT				Top Depth (ftKB) 4,436.0		Bottom Depth (ftKB) 5,099.0		
Description PRODUCTION CASING CEMENT				Top Depth (ftKB) 6,430.0		Bottom Depth (ftKB) 7,338.0		
Tubing Strings								
Tubing Description Tubing - Production		Run Date 2/23/2006	String... 2 3/8	ID (in) 2.00	Wt (lb/ft) 4.70	Grade J-55	Len (ft) 7,096.00	Set De...
Tubing Components								
Item Des		OD (in)	Wt (lb/ft)	Grade	Jts	Len (ft)	Btm (ftKB)	Btm (TVD) (ftKB)
EUE 8rd Tubing		2 3/8	4.70	J-55	231	7,094.50	7,108.5	
Pump Seating Nipple		2 3/8	1.10			1.00	7,109.5	
Notched collar		2 3/8				0.50	7,110.0	
Other In Hole								
Run Date		Des			OD (in)	Top (ftKB)	Btm (ftKB)	

**Well Name: CAMENISCH-STRAIGHT 13-34**

VERTICAL - ORIGINAL HOLE, 10/17/2017 2:00:05 PM



Logs			
Date	Type	Top, MD (ftKB)	Btm, MD (ftKB)
1/24/1993	DENSILOG	2,450.0	7,318.0
1/24/1993	INDUCTION	366.0	7,347.0
2/5/1993	CEMENT BOND	4,340.0	7,277.0
10/11/2017	GYRO	0.0	7,050.0

Perforation Data					
Linked Zone	Bnch/St g	Sum of Entered Shot Total	Top (ftKB)	Btm (ftKB)	Date
SHANNON, ORIGINAL HOLE	A	26	4,750.00	4,772.00	5/27/1993
SHANNON, ORIGINAL HOLE		6	4,779.00	4,782.00	5/27/1993
NIOBRARA, ORIGINAL HOLE		15	6,858.00	6,878.00	2/24/1993
NIOBRARA, ORIGINAL HOLE		13	6,982.00	6,997.00	2/24/1993
CODELL, ORIGINAL HOLE		25	7,174.00	7,186.00	2/5/1993
CODELL, ORIGINAL HOLE		60	7,175.00	7,185.00	10/21/1999

Stimulation Intervals		
Start Date	Primary Job Type	
2/18/1993	DRILLING/COMPLETION - ORIGINAL	
Technical Result	Tech Result Details	Tech Result Note
Comment		
Start Date	Primary Job Type	
2/24/1993	DRILLING/COMPLETION - ORIGINAL	
Technical Result	Tech Result Details	Tech Result Note
Comment		
Start Date	Primary Job Type	
10/22/1999	RE-FRAC	
Technical Result	Tech Result Details	Tech Result Note
Comment		
Start Date	Primary Job Type	
3/1/1993	DRILLING/COMPLETION - ORIGINAL	
Technical Result	Tech Result Details	Tech Result Note
Comment		