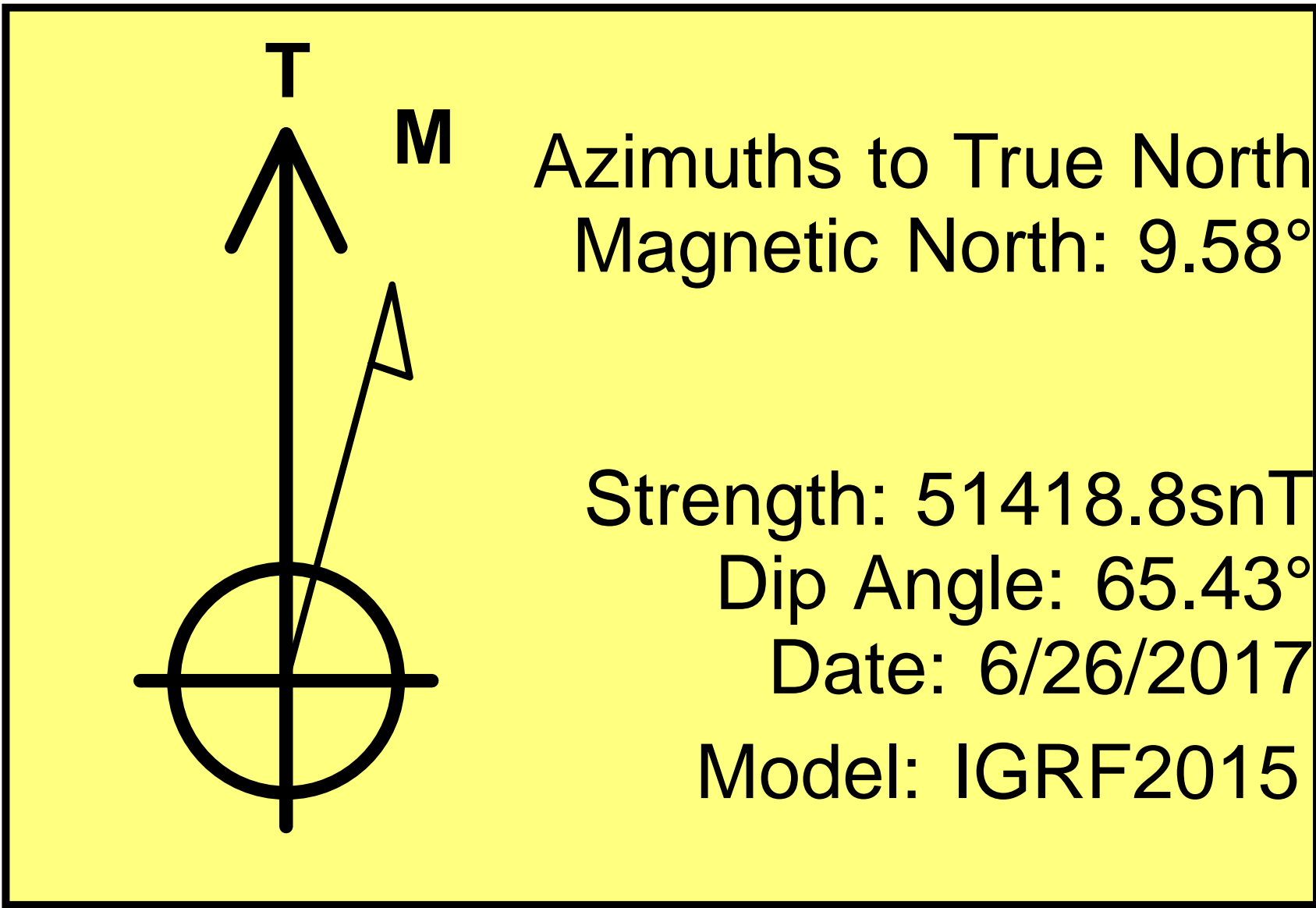
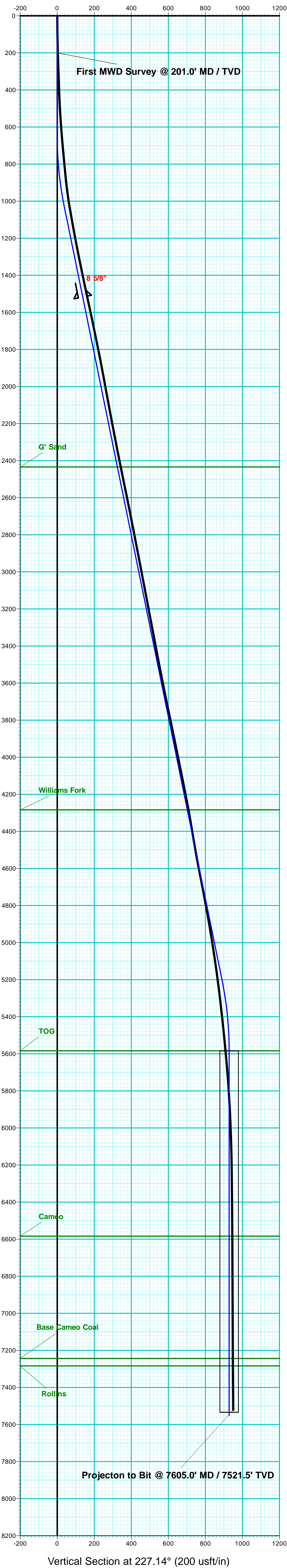


Gunderson 20-07W  
Mesa County, CO  
Q170837 & RM-170704  
Design #4

Company Name: Laramie Energy, LLC  
Gunderson 20-07W  
Mesa County, CO  
Rig: H&P #522  
Created By: Will Jircik  
Date: 7/11/2017

PROJECT DETAILS: Mesa County, CO

Geodetic System: US State Plane 1983  
Datum: North American Datum 1983  
Ellipsoid: GRS 1980  
Zone: Colorado Central Zone  
System Datum: Mean Sea Level



FORMATION TOP DETAILS		
TVDPath	MDPath	Formation
2434.0	2465.5	G' Sand
4284.0	4353.7	Williams Fork
5584.0	5675.2	TOG
6584.0	6675.2	Cameo
7244.0	7335.2	Base Cameo Coal
7284.0	7375.2	Rollins

WELL DETAILS: Gunderson 20-07W						
+N/-S	+E/-W	Northing	Ground Level: Easting	7146.0	Latitude	Longitude
0.0	0.0	1530299.15	2350220.99		39.266867	-107.795317

DESIGN TARGET DETAILS								
Name	TVD	+N/-S	+E/-W	Northing	Easting	Latitude	Longitude	Shape
PBHL - Gunderson 20-07W	7534.0	-631.5	-680.6	1529685.01	2349524.61	39.265133	-107.797721	Circle (Radius: 50.0)
- plan hits target center								

ANNOTATIONS								
MD	Inc	Azi	TVD	+N/-S	+E/-W	Vsect	Departure	Annotation
201.0	1.90	241.60	201.0	-1.6	-2.9	3.2	3.3	First MWD Survey @ 201.0' MD / TVD
7605.0	0.60	261.40	7521.5	-644.7	-698.5	950.6	960.7	Projecton to Bit @ 7605.0' MD / 7521.5' TVD

