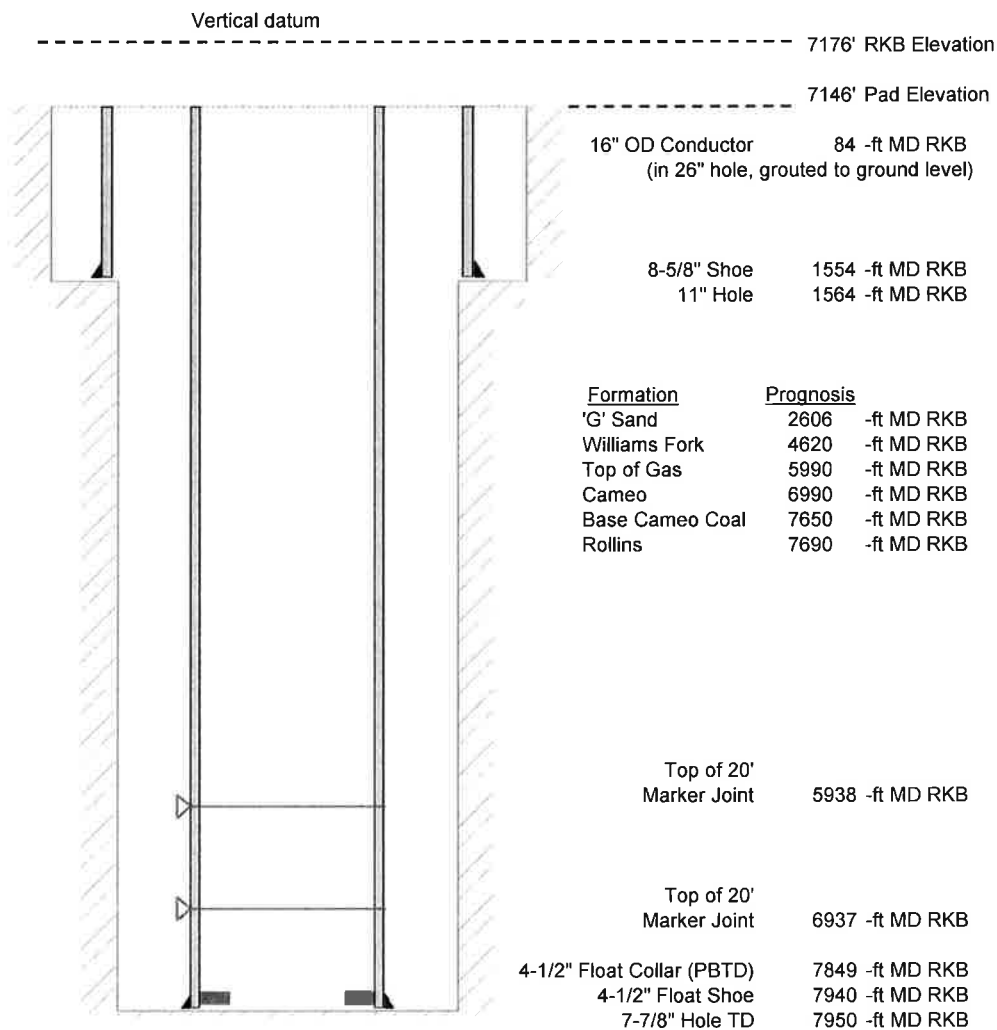


Laramie Energy, LLC  
 Gunderson BCU 20-06E  
 Slot B-5  
 H&P 522 (30-ft KB)

API # : 05-077-10352  
 NE/4 NW/4 S20/T9S/R93W/6th PM  
 Mesa County, CO  
 Date of diagram :



**Cementing details**

| 8-5/8" 24# J55 STC Surface Csg | Lead | Tail |
|--------------------------------|------|------|
| Density (ppg)                  | 12.3 | 12.8 |
| Volume (sx)                    | 197  | 109  |
| Yield (cf/sx)                  | 2.45 | 2.18 |
| Top (ft RKB)                   | 0    | 681  |
| Bottom (ft RKB)                | 681  | 1554 |
| Returns (full or partial)      | Full | Full |

| 4-1/2" 11.6# Nexteel-80 LTC Prod Csg | Lead | Tail |
|--------------------------------------|------|------|
| Density (ppg)                        | 12.5 | 13.3 |
| Volume (sx)                          | 834  | 427  |
| Yield (cf/sx)                        | 1.94 | 1.73 |
| Est Top (ft RKB)                     | 0    |      |
| Est Bottom (ft RKB)                  | 5790 | 7940 |
| Returns (full or partial)            | Full | Full |

| Displacement |
|--------------|
| 8.3 ppg      |
| bbls         |

Other Remarks : 26 bbls good cement back to surface on surface job. 40 bbls spacer back on production.