

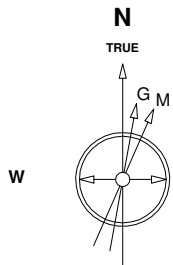
Great Western Operating Company, LLC

Location Colorado
Field Wattenburg
Installation Brant

Slot N02 - Brant LE 08-162HNX
Well Brant LE 08-162HNX
Wellbore Brant LE 08-162HNX (PWB)

Created by admin
Date plotted 23-Aug-2017

Plot reference is Brant LE 08-162HNX (PWB).
Ref wellpath is Brant LE 08-162HNX (PWP#1).
Coordinates are in Feet reference N02 - Brant LE 08-162HNX.
True Vertical Depths are reference Rig Datum.
Measured Depths are reference Rig Datum.
Rig Datum: Planned Datum #1
Rig Datum to Mean Sea Level: 4992.00 ft.
Plot North is aligned to TRUE North.



Scale 1 cm = 500 ft

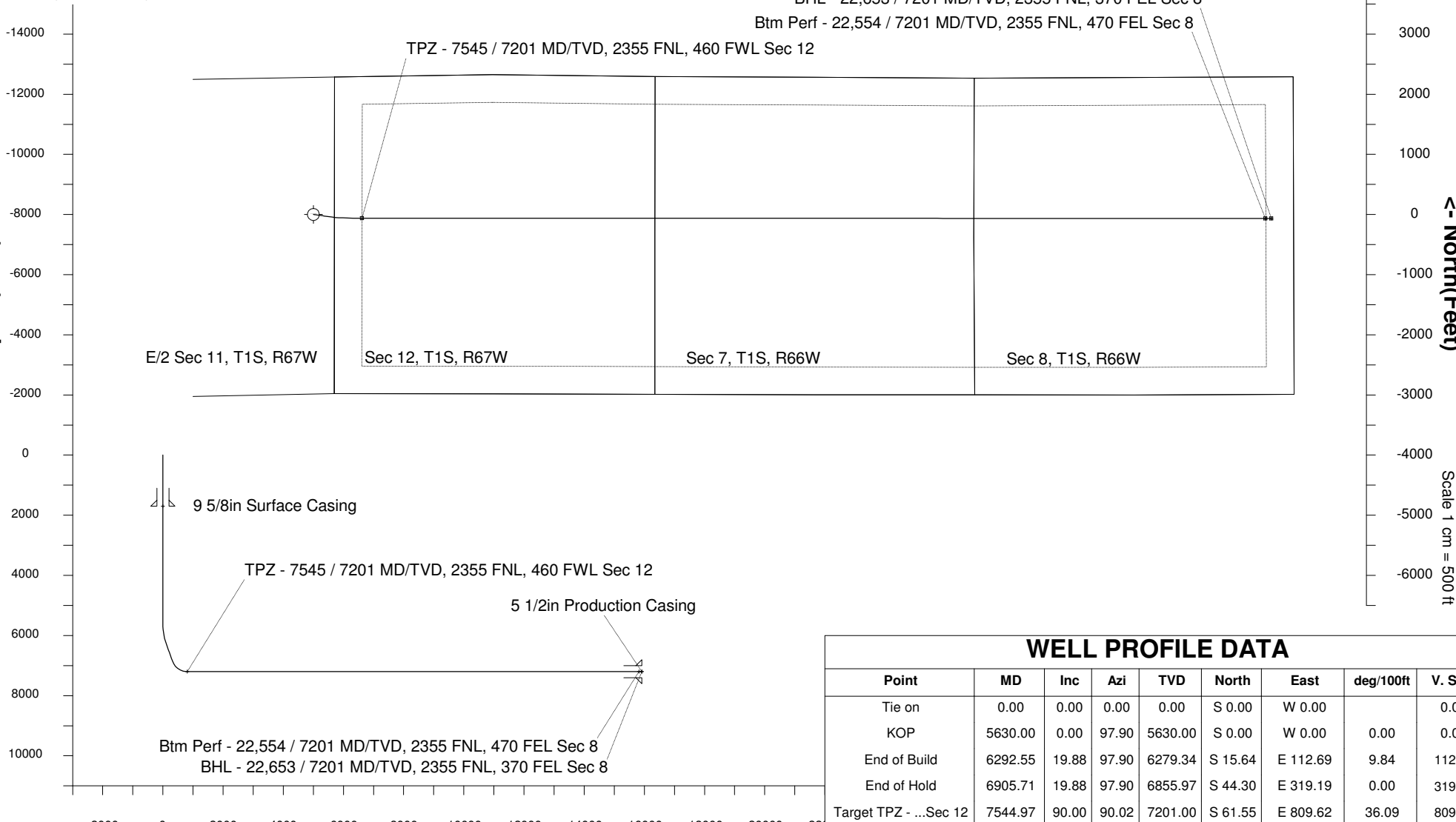
East (Feet) ->

-2000 -1000 0 1000 2000 3000 4000 5000 6000 7000 8000 9000 10000 11000 12000 13000 14000 15000 16000 17000

14-Apr-2017
IGRF Model [1900.0-2020.0] Dip: 66.51 deg Field: 52184.6 nT
Lat: N39 58 49.6308 Long: W104 50 52.6488 Elev: 4972.00 ft
Magnetic North is 8.24 deg East of TRUE North
To correct azimuth from Magnetic to TRUE add 8.24 deg

Scale 1 cm = 1000 ft

<- True Vertical Depth (Feet)



<- North(Feet)

Scale 1 cm = 500 ft

WELL PROFILE DATA

Point	MD	Inc	Azi	TVD	North	East	deg/100ft	V. Sect
Tie on	0.00	0.00	0.00	0.00	S 0.00	W 0.00		0.00
KOP	5630.00	0.00	97.90	5630.00	S 0.00	W 0.00	0.00	0.00
End of Build	6292.55	19.88	97.90	6279.34	S 15.64	E 112.69	9.84	112.76
End of Hold	6905.71	19.88	97.90	6855.97	S 44.30	E 319.19	0.00	319.37
Target TPZ - ...Sec 12	7544.97	90.00	90.02	7201.00	S 61.55	E 809.62	36.09	809.87
Target Btm Pe... Sec 8	22553.71	90.00	90.02	7201.00	S 65.64	E 15818.36	0.00	15818.50
End of Turn	22558.26	90.00	90.61	7201.00	S 65.66	E 15822.91	42.65	15823.04
T.D. & Target BHL...c 8	22653.21	90.00	90.61	7201.00	S 66.67	E 15917.85	0.00	15917.99