

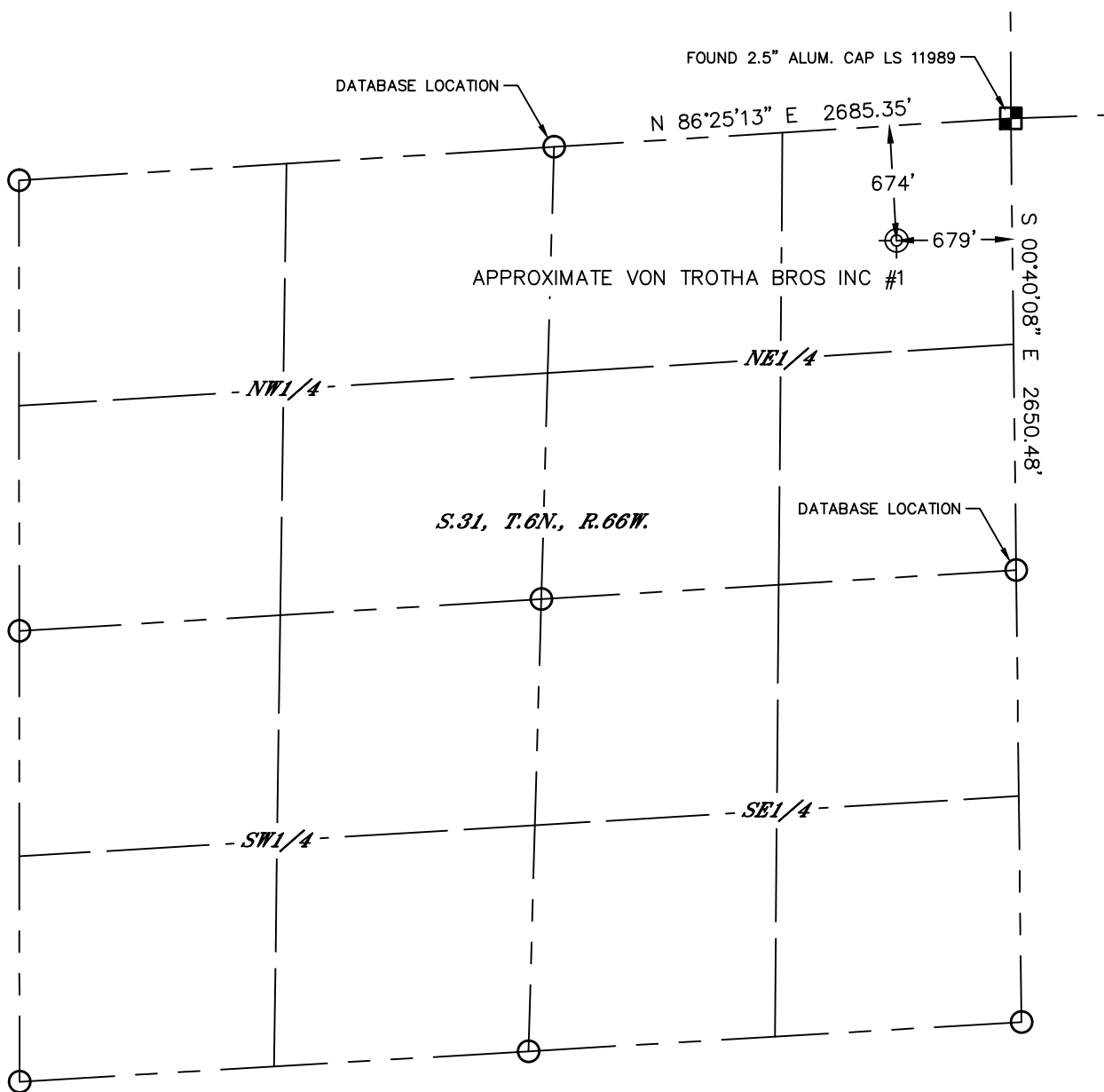


Lat40°, Inc. 6250 W. 10th Street, Unit 2, Greeley, CO 970-515-5294

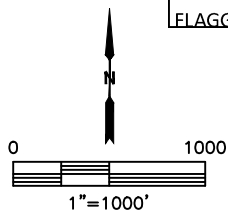
PLUGGED & ABANDONED WELL EXHIBIT

VON TROTHA BROS INC #1

SECTION: 31
TOWNSHIP: 6N
RANGE: 66W
6TH. P.M.
WELD COUNTY, CO



CLIENT: SRC ENERGY				LANDMAN: CORY SHEAHEN					
INSTRUMENT OPERATOR: SCOTT SHERARD				SURVEY DATE: 10/5/2017		SURFACE USE: OIL/GAS FACILITY			
SHL FOOTAGE		SHL LAT °	SHL LONG °	SHL PDOP	SHL ELEV (FT.)	SHL 1/4/1/4	SHL S-T-R		
674	FNL	679	FEL	40.44963	-104.81398	2.0	4711	NENE	31-6-66
DESCRIPTION: FOUND STRONG METAL DETECTOR RING AT NOTED POSITION. THIS WAS AMONG OTHER SOFTER RINGS ON									
AND AROUND AN OLD PAD SITE, CONSISTING OF PIPE FITTINGS, T-POSTS AND CABLE. SET AN ORANGE LATH WITH									
FLAGGING AT APPROXIMATE LOCATION OF VON TROTHA BROS INC #1 P&A WELL									

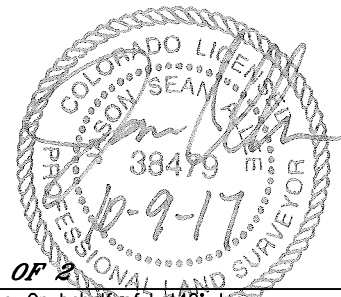


LEGEND

- = ALIQUOT MONUMENT AS DESCRIBED
- = CALCULATED POSITION
- ⊗ = ABANDONED WELL

NOTE:

- 1) Bearings shown are Grid Bearings of the Colorado State Plane Coordinate System, North Zone, North American Datum 1983. The lineal dimensions as contained herein are based upon the "U.S. Survey Foot."
- 2) Distances to section lines measured at 90 degrees from said section lines.
- 3) Ground elevations are based on an observed GPS elevation (NAVD 1988 DATUM).
- 4) Latitude and Longitude shown are (NAD 83 DATUM).
- 6) This map does not represent a boundary survey.



SHEET 1 OF 2

Jason S. Allee—On behalf of Lat40°, Inc.
Colorado Licensed Professional Land Surveyor No. 38479
DATE: 10/9/2017
PROJECT#: 2017120



Lat40°, Inc. 6250 W. 10th Street, Unit 2, Greeley, CO 970-515-5294

PLUGGED & ABANDONED WELL EXHIBIT

VON TROTHA BROS INC #1

SECTION: 31
TOWNSHIP: 6N
RANGE: 66W
6TH. P.M.
WELD COUNTY, CO
DATE: 10/5/2017



VIEW NORTH



VIEW WEST



VIEW EAST



VIEW SOUTH