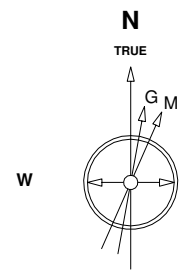


Great Western Operating Company, LLC

Location Colorado
Field Wattenburg
Installation Brant
Slot N06 - Brant LE 08-119HN
Well Brant LE 08-119HN
Wellbore Brant LE 08-119HN (PWB)

Created by admin
 Date plotted 23-Aug-2017
 Plot reference is Brant LE 08-119HN (PWB).
 Ref wellpath is Brant LE 08-119HN (PWP#1).
 Coordinates are in Feet reference N06 - Brant LE 08-119HN.
 True Vertical Depths are reference Rig Datum.
 Measured Depths are reference Rig Datum.
 Rig Datum: Planned Datum #1
 Rig Datum to Mean Sea Level: 4992.00 ft.
 Plot North is aligned to TRUE North.

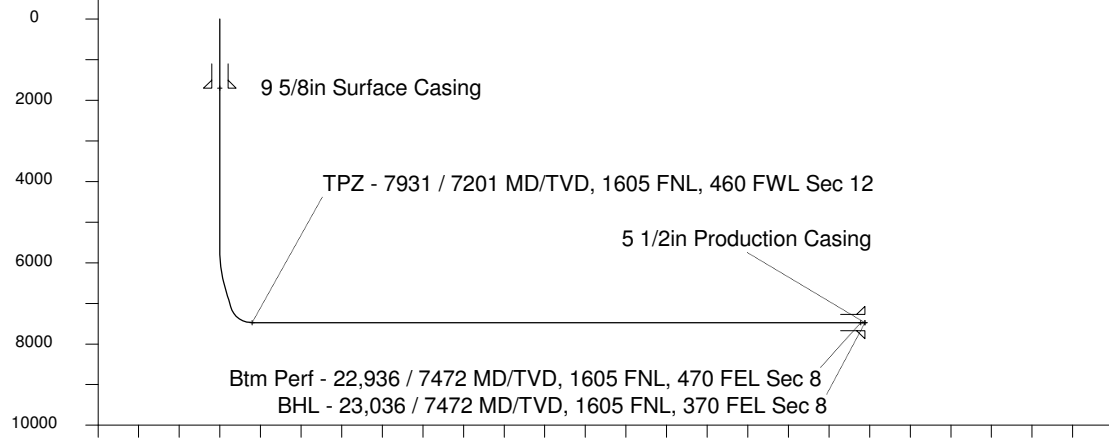
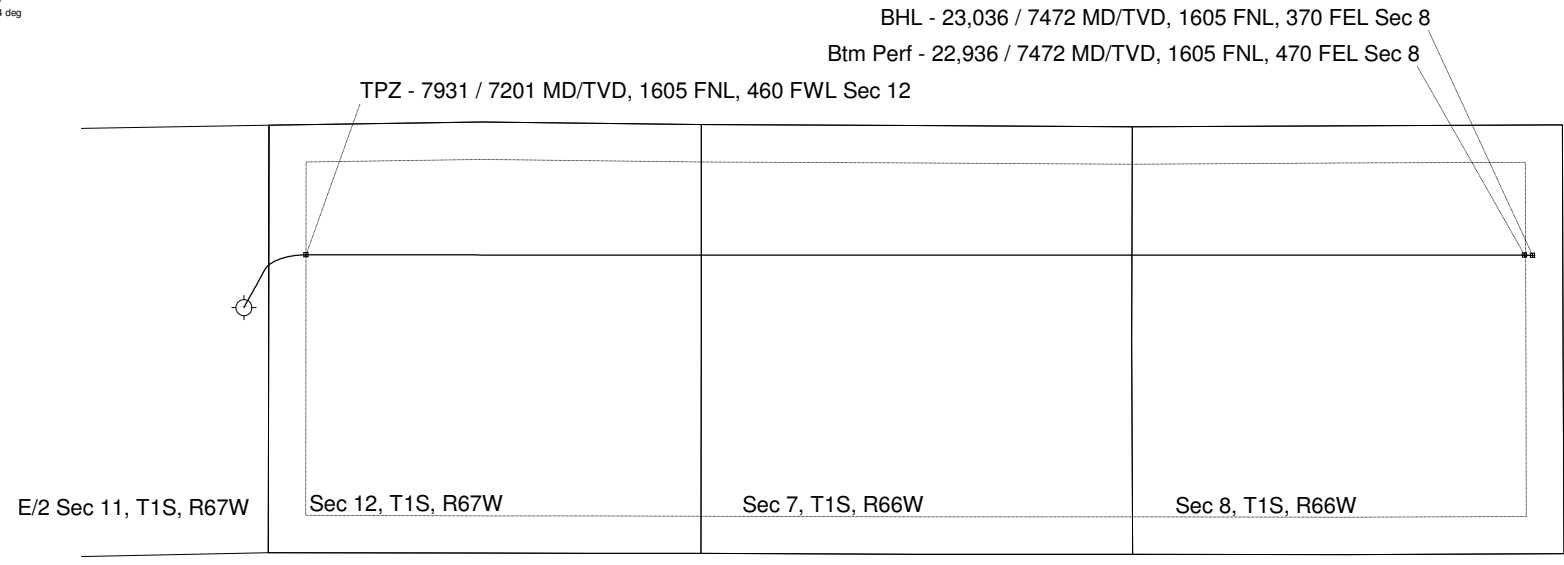


14-Apr-2017
 IGRF Model [1900.0-2020.0] Dip: 66.51 deg Field: 52184.6 nT
 Lat: N39 58 49.6308 Long: W104 50 52.6488 Elev: 4972.00 ft
 Magnetic North is 8.24 deg East of TRUE North
 To correct azimuth from Magnetic to TRUE add 8.24 deg

Scale 1 cm = 1000 ft

<- True Vertical Depth (Feet)

4000
 3000
 2000
 1000
 0
 -1000
 -2000
 -3000
 -4000
 -5000
 -6000
 Scale 1 cm = 500 ft
 <- North(Feet)



Scale 1 cm = 1000 ft
Vertical Section (Feet) ->
 Azimuth 87.67 with reference 0.00 N, 0.00 E from N06 - Brant LE 08-119HN

WELL PROFILE DATA								
Point	MD	Inc	Azi	TVD	North	East	deg/100ft	V. Sect
Tie on	0.00	0.00	0.00	0.00	S 0.00	W 0.00		0.00
KOP	5676.40	0.00	28.79	5676.40	S 0.00	W 0.00	0.00	0.00
End of Build	6676.47	30.00	28.79	6631.39	N 224.28	E 123.25	9.84	132.25
End of Hold	7239.67	30.00	28.79	7119.12	N 471.08	E 258.88	0.00	277.78
Target TPZ - ...Sec 12	7931.23	90.00	90.02	7472.00	N 649.53	E 764.48	36.09	790.21
Target Btm Pe... Sec 8	22936.16	90.00	90.02	7472.00	N 645.42	E 15769.41	0.00	15782.61
End of Turn	22940.68	90.00	90.60	7472.00	N 645.39	E 15773.93	42.65	15787.13
T.D. & Target BHL...c 8	23035.93	90.00	90.60	7472.00	N 644.39	E 15869.17	0.00	15882.25