



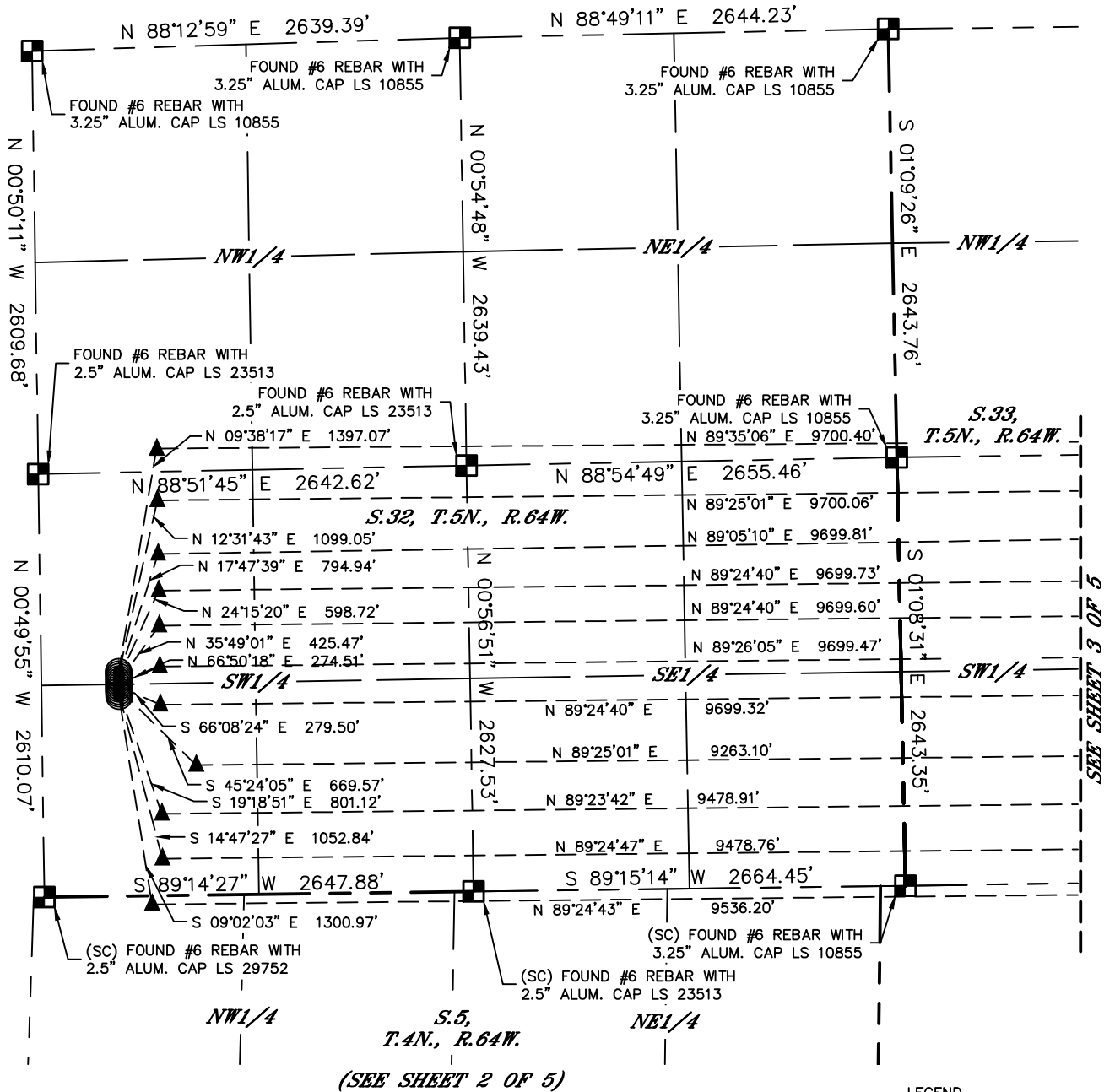
Lat40°, Inc. 6250 W. 10th Street, Unit 2, Greeley, CO 970-515-5294

# MULTI-WELL PLAN

## BATH-SCHMIER 5N64W32 1-11 PAD

THIS MAP DOES NOT REPRESENT A BOUNDARY SURVEY

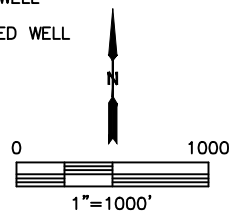
SECTION: 32  
TOWNSHIP: 5N  
RANGE: 64W  
6TH. P.M.  
WELD COUNTY, CO



### LEGEND

- = ALIQUOT MONUMENT AS DESCRIBED
- = CALCULATED POSITION
- = SURFACE HOLE LOCATION (SHL)
- ▲ = ENTRY POINT LOCATION (EP)
- = BOTTOM HOLE LOCATION (BHL)
- ⊙ = EXISTING WELL
- ⊙ = ABANDONED WELL

#	WELL NAME	BHL FOOTAGE				BHL LAT °	BHL LONG °	BHL S-T-R
1	BATH-SCHMIER 1C	2575	FNL	150	FEL	40.35597	-104.54569	33-5-64
2	BATH-SCHMIER 2N	2410	FSL	150	FEL	40.35517	-104.54569	33-5-64
3	BATH-SCHMIER 3N	2135	FSL	150	FEL	40.35441	-104.54569	33-5-64
4	BATH-SCHMIER 4N	1854	FSL	150	FEL	40.35364	-104.54568	33-5-64
5	BATH-SCHMIER 5N	1638	FSL	150	FEL	40.35305	-104.54568	33-5-64
6	BATH-SCHMIER 6N	1382	FSL	150	FEL	40.35235	-104.54568	33-5-64
7	BATH-SCHMIER 7N	1150	FSL	150	FEL	40.35171	-104.54568	33-5-64
8	BATH-SCHMIER 8N	775	FSL	370	FEL	40.35068	-104.54646	33-5-64
9	BATH-SCHMIER 9N	480	FSL	370	FEL	40.34987	-104.54646	33-5-64
10	BATH-SCHMIER 10N	200	FSL	370	FEL	40.34910	-104.54645	33-5-64
11	BATH-SCHMIER 11N	81	FNL	225	FEL	40.34833	-104.54649	4-4-64







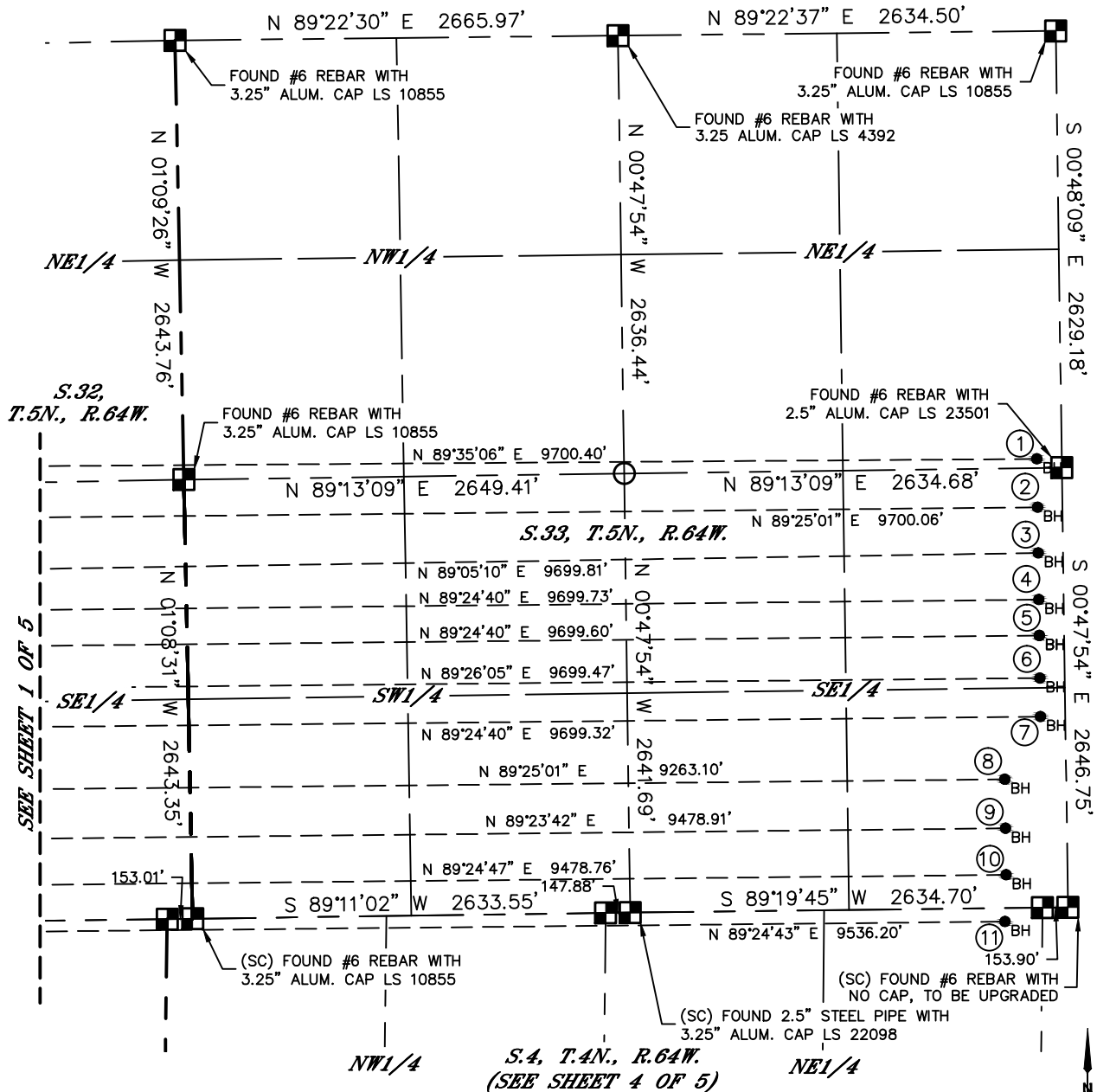
Lat40°, Inc. 6250 W. 10th Street, Unit 2, Greeley, CO 970-515-5294

# MULTI-WELL PLAN

## BATH-SCHMIER 5N64W32 1-11 PAD

THIS MAP DOES NOT REPRESENT A BOUNDARY SURVEY

SECTION: 32  
TOWNSHIP: 5N  
RANGE: 64W  
6TH. P.M.  
WELD COUNTY, CO



#	WELL NAME	BHL FOOTAGE				BHL LAT °	BHL LONG °	BHL S-T-R
1	BATH-SCHMIER 1C	2575	FNL	150	FEL	40.35597	-104.54569	33-5-64
2	BATH-SCHMIER 2N	2410	FSL	150	FEL	40.35517	-104.54569	33-5-64
3	BATH-SCHMIER 3N	2135	FSL	150	FEL	40.35441	-104.54569	33-5-64
4	BATH-SCHMIER 4N	1854	FSL	150	FEL	40.35364	-104.54568	33-5-64
5	BATH-SCHMIER 5N	1638	FSL	150	FEL	40.35305	-104.54568	33-5-64
6	BATH-SCHMIER 6N	1382	FSL	150	FEL	40.35235	-104.54568	33-5-64
7	BATH-SCHMIER 7N	1150	FSL	150	FEL	40.35171	-104.54568	33-5-64
8	BATH-SCHMIER 8N	775	FSL	370	FEL	40.35068	-104.54646	33-5-64
9	BATH-SCHMIER 9N	480	FSL	370	FEL	40.34987	-104.54646	33-5-64
10	BATH-SCHMIER 10N	200	FSL	370	FEL	40.34910	-104.54645	33-5-64
11	BATH-SCHMIER 11N	81	FNL	225	FEL	40.34833	-104.54649	4-4-64

- LEGEND
- = ALIQUOT MONUMENT AS DESCRIBED
  - = CALCULATED POSITION
  - = SURFACE HOLE LOCATION (SHL)
  - ▲ = ENTRY POINT LOCATION (EP)
  - <sub>BH</sub> = BOTTOM HOLE LOCATION (BHL)
  - ⊙ = EXISTING WELL
  - ⊙ = ABANDONED WELL

SHEET 3 OF 5

DATE: 8/16/2017  
PROJECT#: 2016101



Lat40°, Inc. 6250 W. 10th Street, Unit 2, Greeley, CO 970-515-5294

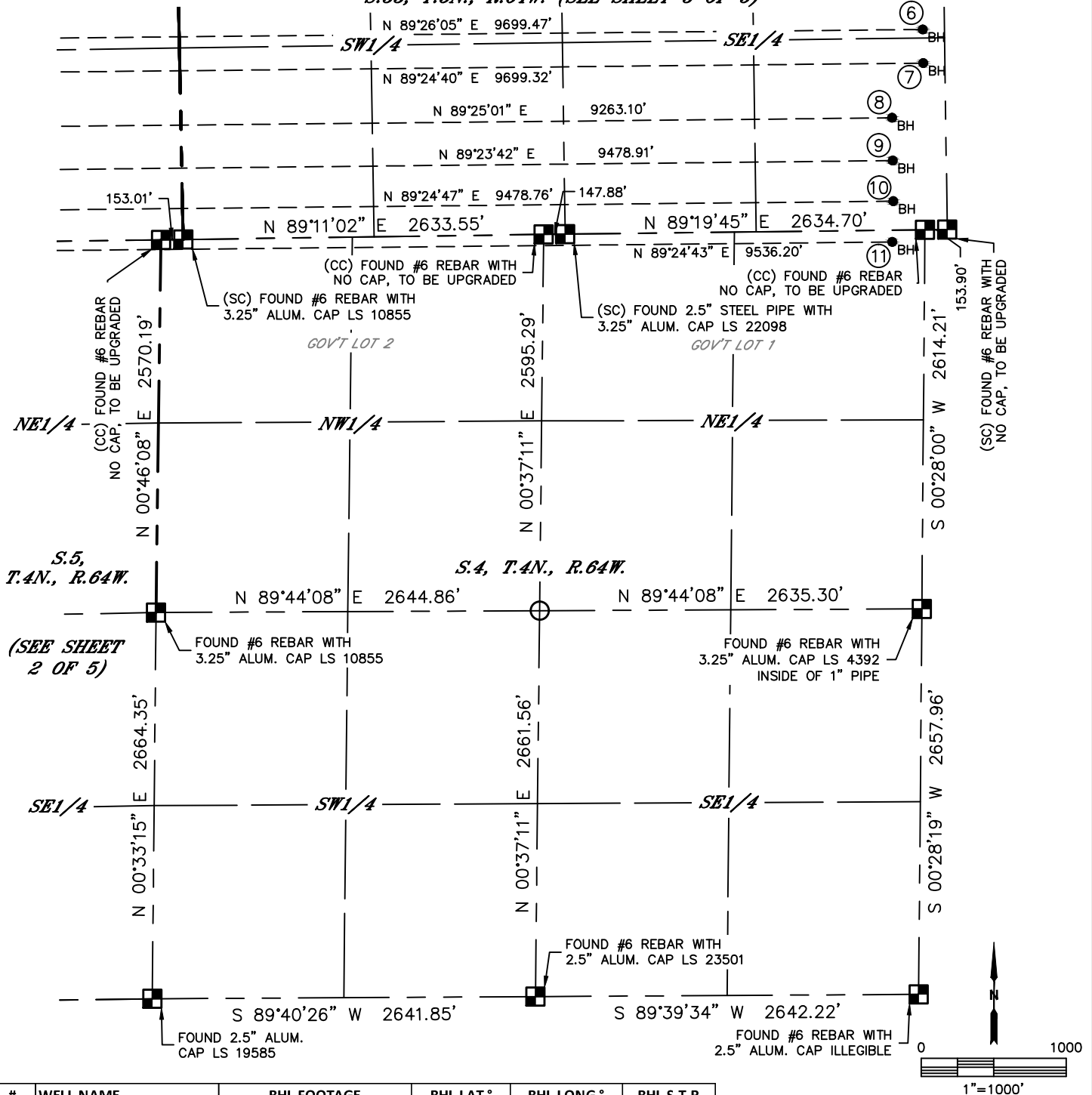
# MULTI-WELL PLAN

## BATH-SCHMIER 5N64W32 1-11 PAD

SECTION: 32  
TOWNSHIP: 5N  
RANGE: 64W  
6TH. P.M.  
WELD COUNTY, CO

THIS MAP DOES NOT REPRESENT A BOUNDARY SURVEY

*S.33, T.5N., R.64W. (SEE SHEET 3 OF 5)*



#	WELL NAME	BHL FOOTAGE			BHL LAT °	BHL LONG °	BHL S-T-R
1	BATH-SCHMIER 1C	2575	FNL	150	FEL	40.35597	-104.54569 33-5-64
2	BATH-SCHMIER 2N	2410	FSL	150	FEL	40.35517	-104.54569 33-5-64
3	BATH-SCHMIER 3N	2135	FSL	150	FEL	40.35441	-104.54569 33-5-64
4	BATH-SCHMIER 4N	1854	FSL	150	FEL	40.35364	-104.54568 33-5-64
5	BATH-SCHMIER 5N	1638	FSL	150	FEL	40.35305	-104.54568 33-5-64
6	BATH-SCHMIER 6N	1382	FSL	150	FEL	40.35235	-104.54568 33-5-64
7	BATH-SCHMIER 7N	1150	FSL	150	FEL	40.35171	-104.54568 33-5-64
8	BATH-SCHMIER 8N	775	FSL	370	FEL	40.35068	-104.54646 33-5-64
9	BATH-SCHMIER 9N	480	FSL	370	FEL	40.34987	-104.54646 33-5-64
10	BATH-SCHMIER 10N	200	FSL	370	FEL	40.34910	-104.54645 33-5-64
11	BATH-SCHMIER 11N	81	FNL	225	FEL	40.34833	-104.54649 4-4-64

### LEGEND

- = ALIQUOT MONUMENT AS DESCRIBED
- = CALCULATED POSITION
- = SURFACE HOLE LOCATION (SHL)
- ▲ = ENTRY POINT LOCATION (EP)
- <sub>BH</sub> = BOTTOM HOLE LOCATION (BHL)
- ⊙ = EXISTING WELL
- ⊙ = ABANDONED WELL

**SHEET 4 OF 5**

DATE: 8/16/2017  
PROJECT#: 2016101

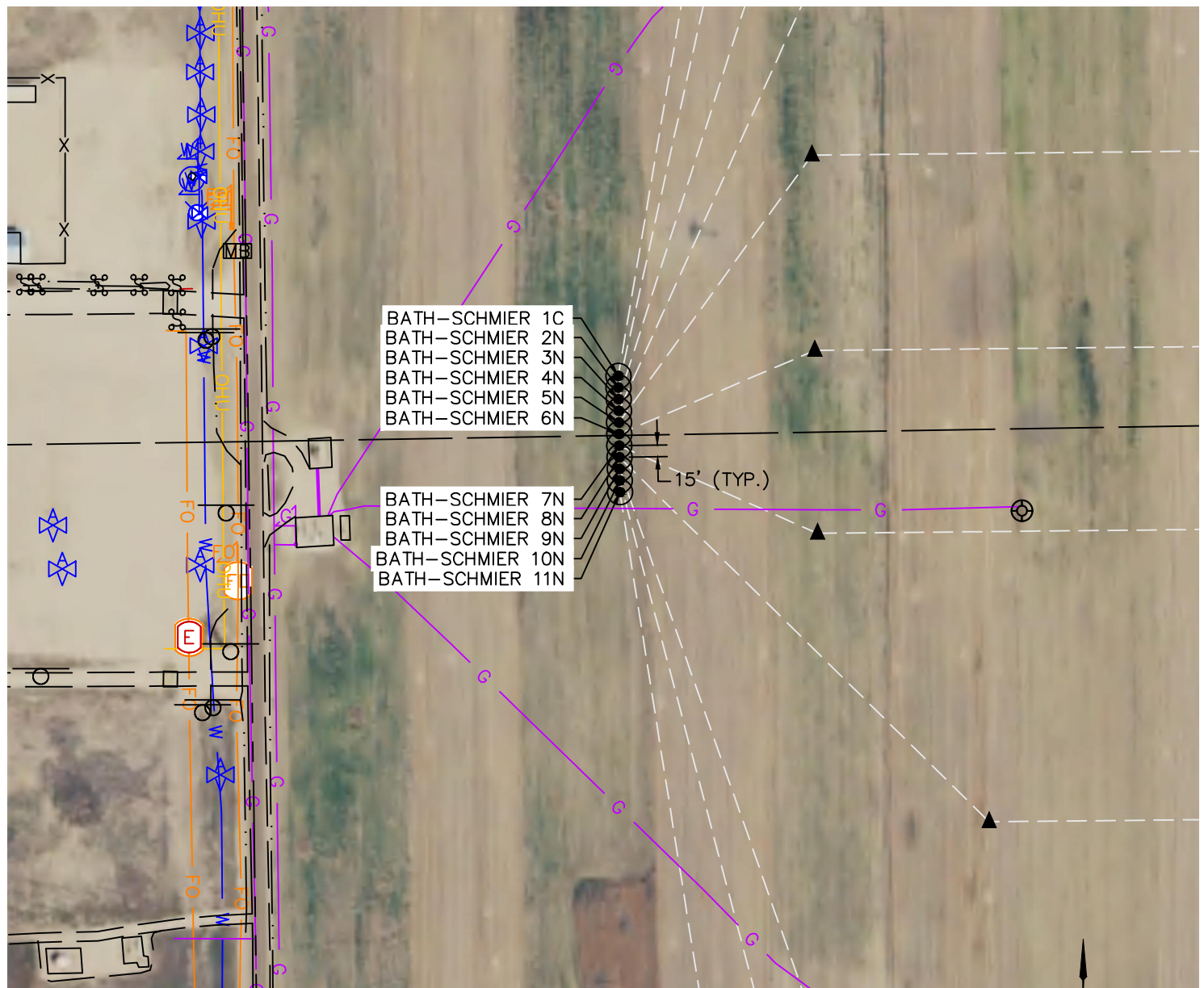


Lat40°, Inc. 6250 W. 10th Street, Unit 2, Greeley, CO 970-515-5294

# MULTI-WELL PLAN

## BATH-SCHMIER 5N64W32 1-11 PAD

SECTION: 32  
TOWNSHIP: 5N  
RANGE: 64W  
6TH. P.M.  
WELD COUNTY, CO



#	WELL NAME	SHL FOOTAGE				SHL LAT °	SHL LONG °	SHL PDOP	SHL ELEV (FT.)	SHL 1/4/1/4	SHL S-T-R
1	BATH-SCHMIER 1C	1383	FSL	478	FWL	40.35228	-104.58138	2.5	4783	NWSW	32-5-64
2	BATH-SCHMIER 2N	1368	FSL	478	FWL	40.35224	-104.58138	2.5	4783	NWSW	32-5-64
3	BATH-SCHMIER 3N	1353	FSL	478	FWL	40.35220	-104.58138	2.5	4782	NWSW	32-5-64
4	BATH-SCHMIER 4N	1338	FSL	478	FWL	40.35216	-104.58138	2.5	4782	NWSW	32-5-64
5	BATH-SCHMIER 5N	1323	FSL	478	FWL	40.35212	-104.58138	2.5	4782	NWSW	32-5-64
6	BATH-SCHMIER 6N	1308	FSL	478	FWL	40.35207	-104.58138	2.5	4781	NWSW	32-5-64
7	BATH-SCHMIER 7N	1293	FSL	478	FWL	40.35203	-104.58138	2.5	4781	SWSW	32-5-64
8	BATH-SCHMIER 8N	1278	FSL	478	FWL	40.35199	-104.58138	2.5	4781	SWSW	32-5-64
9	BATH-SCHMIER 9N	1263	FSL	478	FWL	40.35195	-104.58138	2.5	4780	SWSW	32-5-64
10	BATH-SCHMIER 10N	1248	FSL	478	FWL	40.35191	-104.58138	2.5	4780	SWSW	32-5-64
11	BATH-SCHMIER 11N	1233	FSL	478	FWL	40.35187	-104.58138	2.5	4779	SWSW	32-5-64