

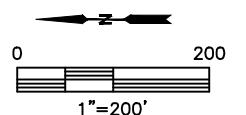
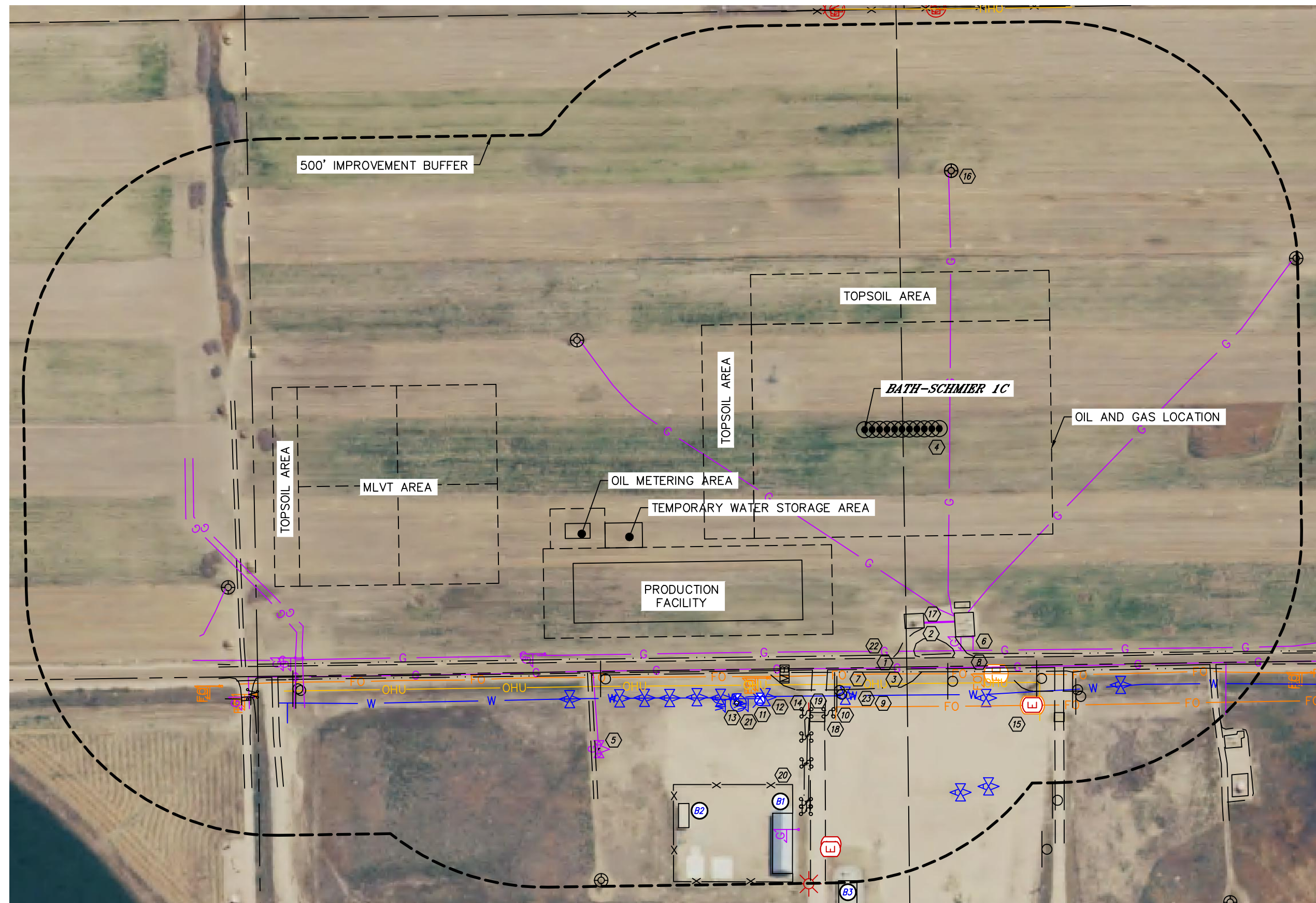


Lat40°, Inc. 6250 W. 10th Street, Unit 2, Greeley, CO 970-515-5294

LOCATION DRAWING

BATH-SCHMIER 5N64W32 1-11 PAD

SECTION: 32
TOWNSHIP: 5N
RANGE: 64W
6TH. P.M.
WELD COUNTY, CO





Lat40°, Inc. 6250 W. 10th Street, Unit 2, Greeley, CO 970-515-5294

LOCATION DRAWING
BATH-SCHMIER 5N64W32 1-11 PAD

SECTION: 32
TOWNSHIP: 5N
RANGE: 64W
6TH. P.M.
WELD COUNTY, CO

IMPROVEMENTS:
(MEASURED FROM THE PROPOSED BATH-SCHMIER 1C WELL LOCATION)

- BUT** NO BUILDING UNITS WITHIN 500' IMPROVEMENT BUFFER
- B1** BUILDING **B1** 784' NW, **B2** 830' NW, **B3** 908' NW
- 1** COUNTY ROAD 51 460' W
- 2** ROAD 416', 612' & 839' SW, 488', 736', 1281' & 1311' NW, 1263' N
- 3** OVERHEAD UTILITY LINE 511' W
- 4** GAS LINE LOCATES (NOBLE) ±171' S, 219' & 1324' NW, 399' & (3) 405' SW, (DCP) ±446', ±479' W, ±469' & ±864' SW, ±731', ±1196' & ±1212' NW
- 5** GAS VALVE 835' NW
- 6** GAS MARKER 469' SW, 785', 815', 1219', 1233' & 1341' NW
- 7** FIBER OPTIC LOCATES ±491' & ±557' W
- 8** FIBER OPTIC VAULT 557' & 648' SW
- 9** WATER LINE LOCATES ±534' W, ±1284' NW
- 10** AIR VALVE 536', 573', 612', 635', 667', 697', 731' & 803' NW, 592', 754', 759' & 727' SW
- 11** FIRE HYDRANT 583' NW
- 12** WATER VALVE 579' & 599' NW
- 13** WATER MANHOLE 606' NW
- 14** ELECTRIC LINE LOCATES ±560' NW
- 15** ELECTRIC VAULT 648' SW, 836' & 846' NW
- 16** EXISTING WELL HEAD 549' & 933' SE, 606' NE, 1049' NW
- 17** EXISTING PRODUCTION EQUIPMENT (NOBLE) 379', 391' & 410' SW
- 18** CATTLE GUARD 574' & 1346' NW, 684' SW
- 19** PIPE 525' 625', 756', 1268' & 1322' NW, 626' & 838' SW
- 20** FENCE 728' & 1343' NW
- 21** CONCRETE 604' NW
- 22** BORROW DITCH 454' & 487' W
- 23** DITCH 521' W, 528', 590' & 679' NW, 587' SW