

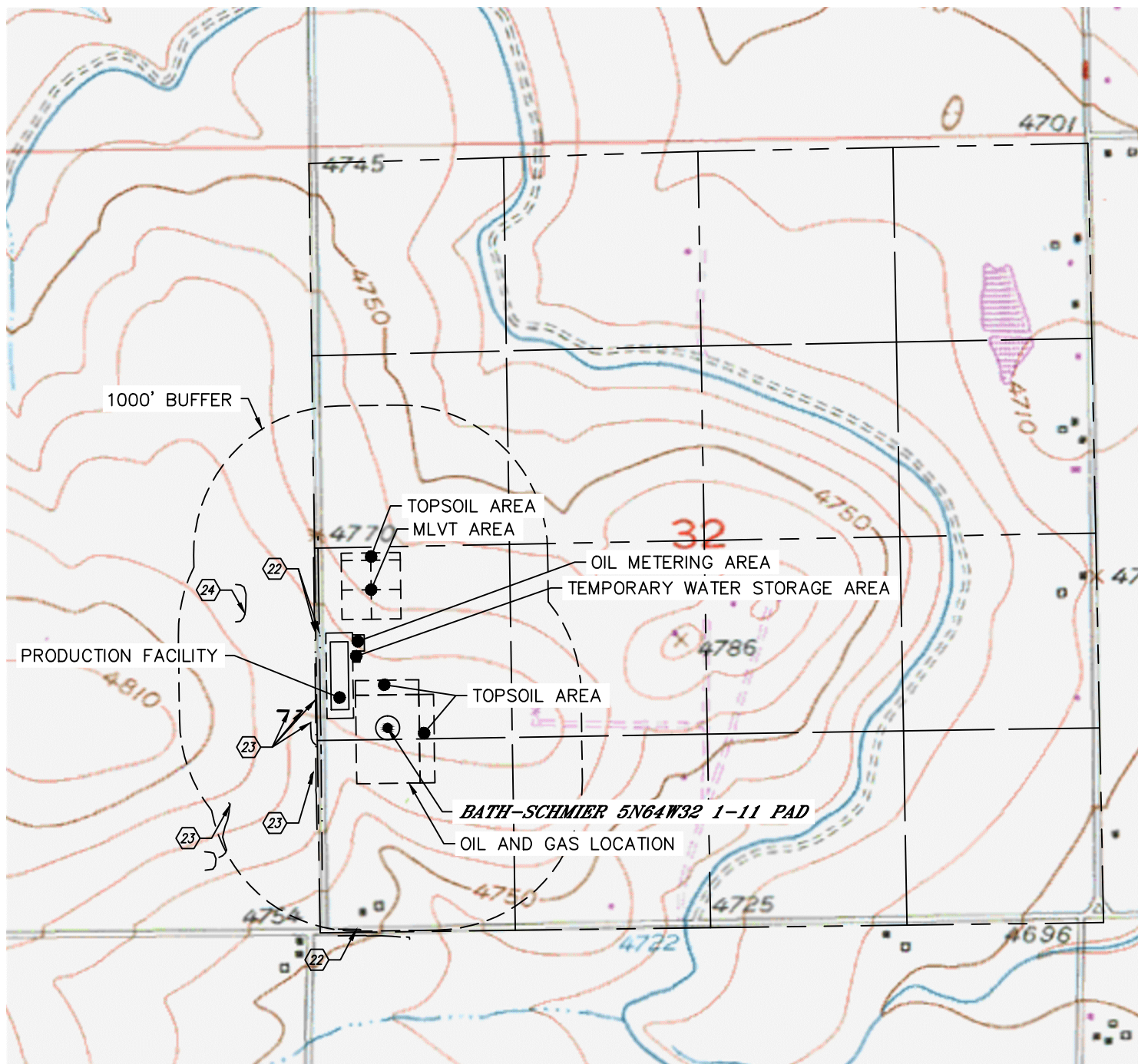


Lat40°, Inc. 6250 W. 10th Street, Unit 2, Greeley, CO 970-515-5294

# HYDROLOGY MAP

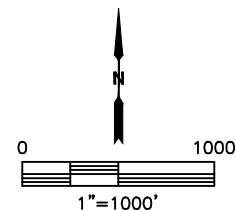
**BATH-SCHMIER 5N64W32 1-11 PAD**

SECTION: 32  
TOWNSHIP: 5N  
RANGE: 64W  
6TH. P.M.  
WELD COUNTY, CO



DISTANCES MEASURED FROM THE EDGE OF THE OIL AND GAS LOCATION.

- ②② BORROW DITCH 43' & 76' W
- ②③ DITCH 80', 167', 257' & 293' W, 114', 870' SW
- ②④ POND 562' NW



NEAREST DOWN GRADIENT SURFACE WATER: BORROW DITCH 43' W

DATE: 6/14/2017  
PROJECT#: 2016101