



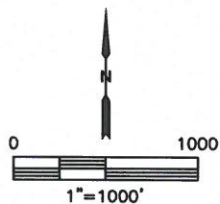
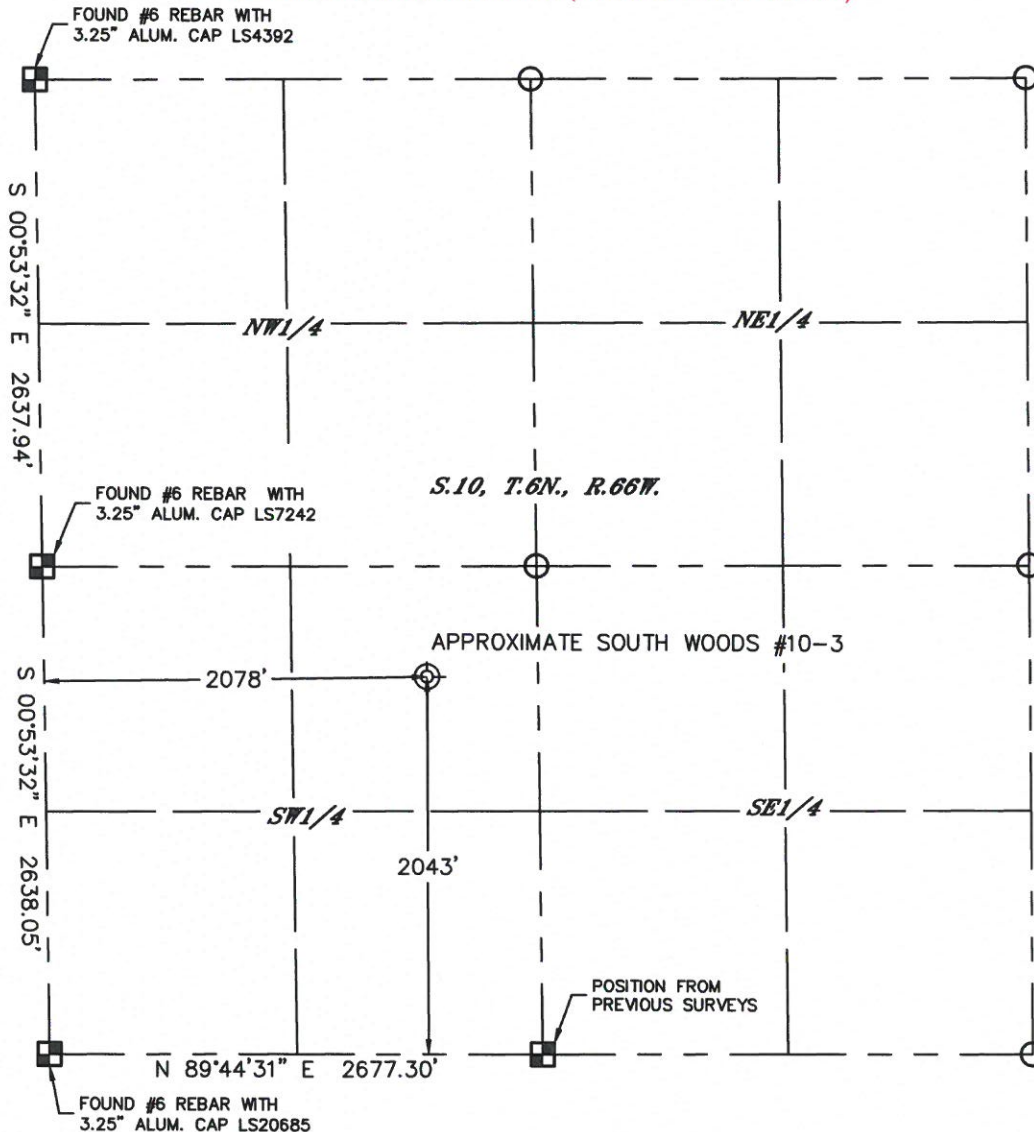
Lat40°, Inc. 6250 W. 10th Street, Unit 2, Greeley, CO 970-515-5294

## PLUGGED & ABANDONED WELL EXHIBIT

THIS MAP DOES NOT REPRESENT A BOUNDARY SURVEY

**SOUTH WOODS #10-3 (API# 05-123-12622)**

SECTION: 10  
TOWNSHIP: 6N  
RANGE: 66W  
6TH. P.M.  
WELD COUNTY, CO

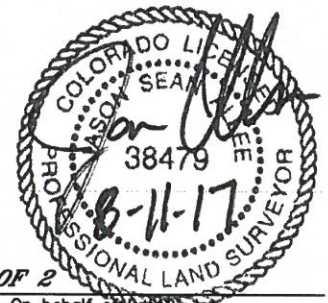


**SURFACE LOCATION**  
LAT: 40.45751°N  
LONG: 104.47023°W  
PDOP: 3.9  
ELEV: 4652'  
1/4 1/4: NESW

**DESCRIPTION**  
FOUND METAL DETECTOR RING IN FIELD OF ±8'  
TALL CORN STALKS.

### LEGEND

- = ALIQUOT MONUMENT AS DESCRIBED
- = CALCULATED POSITION
- ⊙ = ABANDONED WELL



**SHEET 1 OF 2**

Jason S. Allee—On behalf of Lat40°, Inc.  
Colorado Licensed Professional Land Surveyor No. 38479  
DATE: 8/10/2017  
PROJECT#: 2017097



Lat40°, Inc. 6250 W. 10th Street, Unit 2, Greeley, CO 970-515-5294

**LOCATION PICTURES**  
**SOUTH WOODS #10-3 (API# 05-123-12622)**

SECTION: 10  
TOWNSHIP: 6N  
RANGE: 66W  
6TH. P.M.  
WELD COUNTY, CO  
DATE: 8/8/2017



VIEW NORTH



VIEW WEST



VIEW EAST



VIEW SOUTH