

FILE COPY

Also Cement log

FINAL PRINT  
Schlumberger

GAMMA-RAY & SONIC & COLLAR LOG

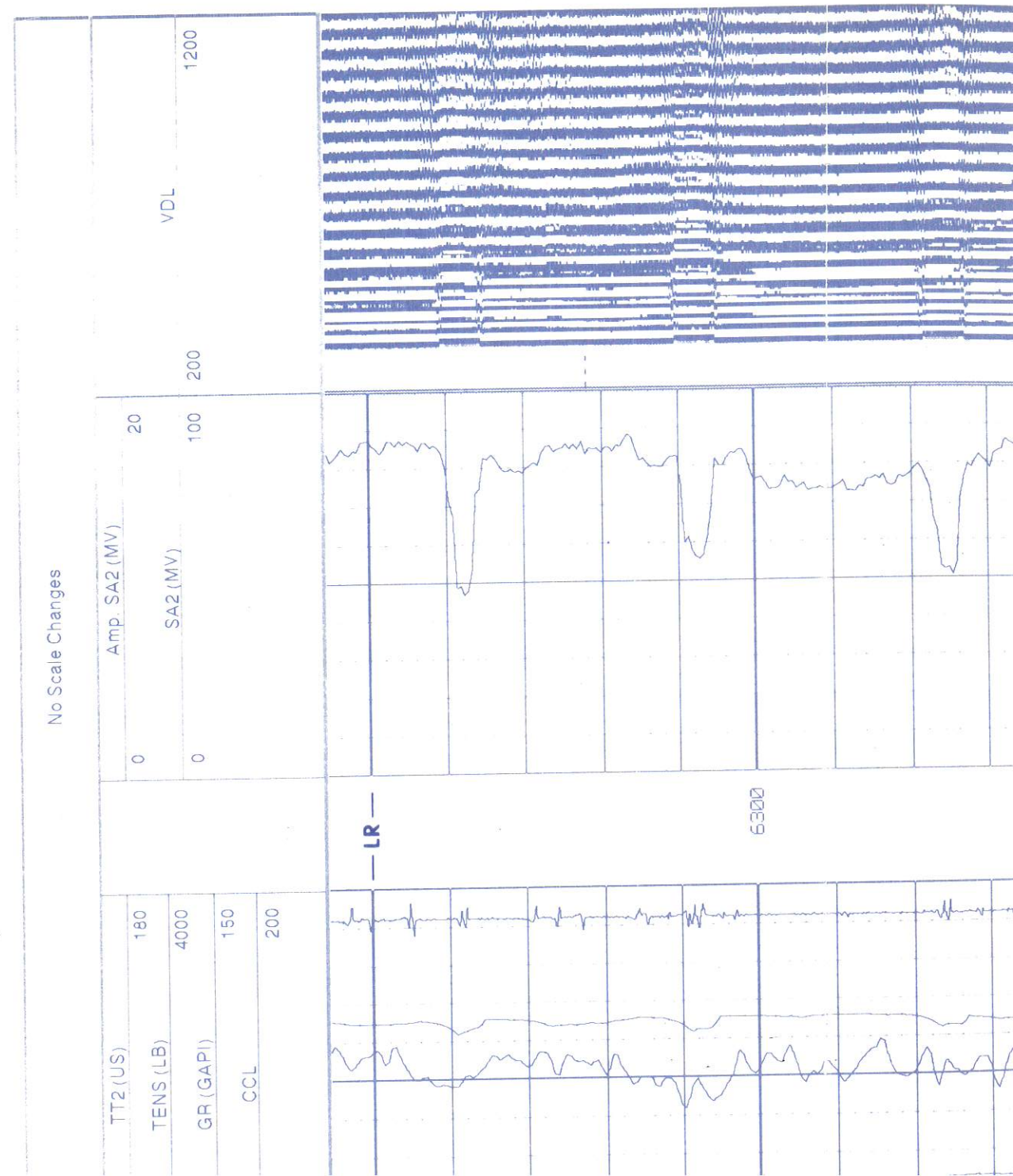
COMPANY GERRITY OIL & GAS CORP

WELL KISSLER K 21-12

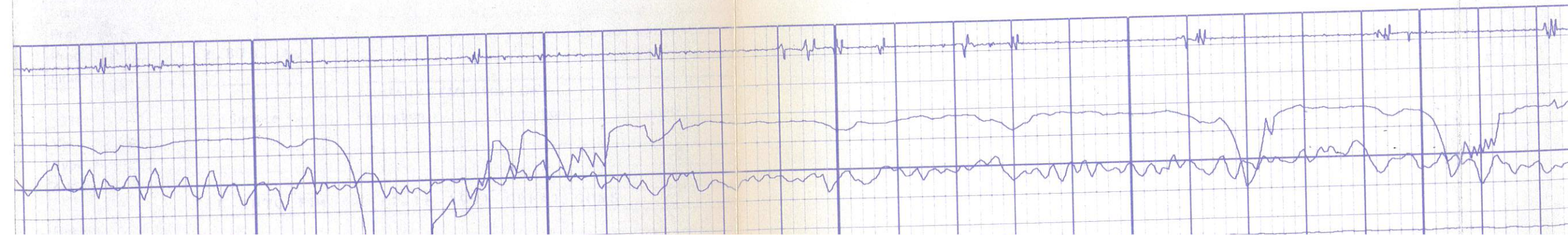
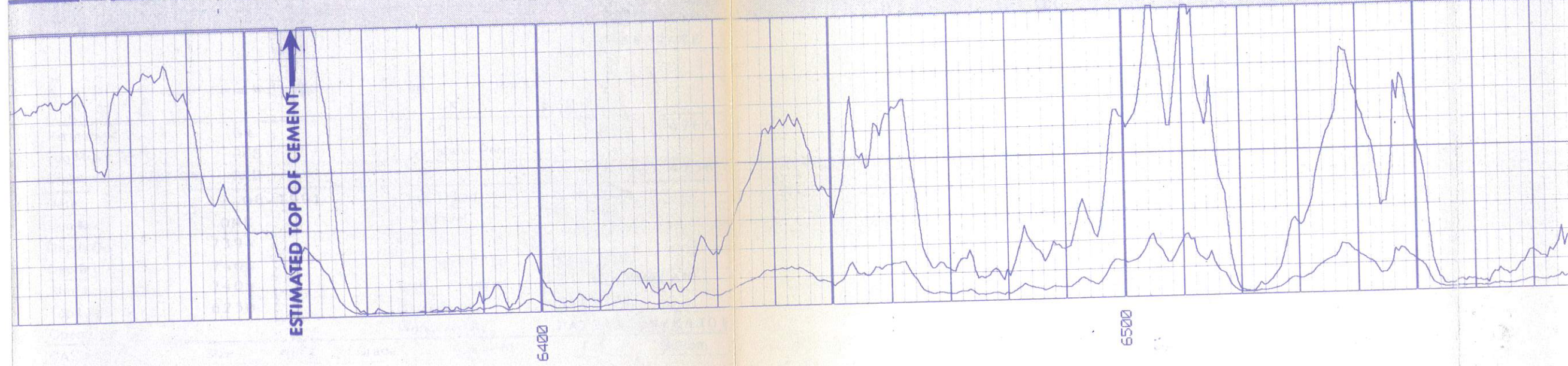
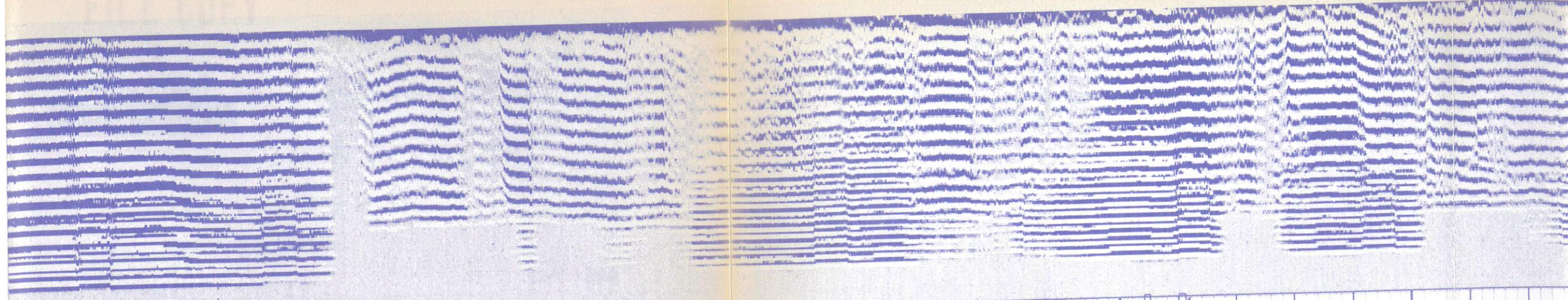
FIELD WATTENBERG

COUNTY WELD STATE COLORADO

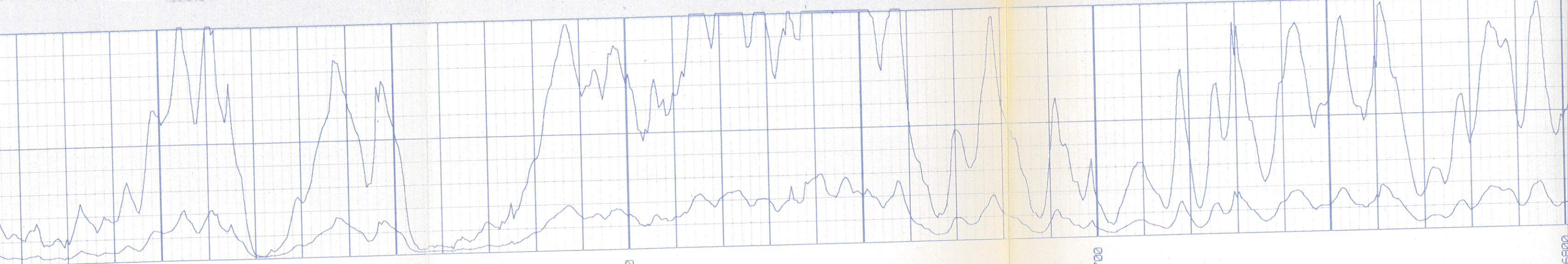
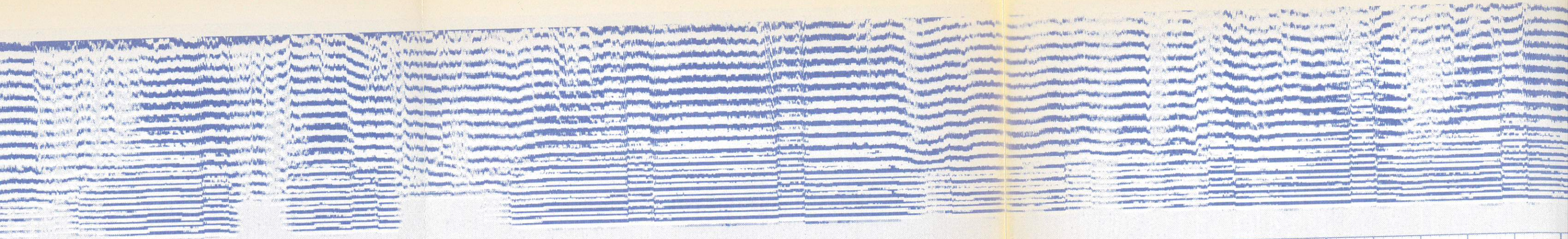
County	Field	Location	Well	Company	Location	Other Services				
					API Serial No	Sect	Tw	Range		PERFORATE
						21	4N	66W		
Permanent Datum		G L		Elev		4756		Elev		K B 4766
Log Measured From		RKB		10.0		above Perm Datum		D F		
Drilling Measured From		RKB		G L		4756				
Date	12-06-1991			Casing Fluid	WATER					
Run No	ONE			Fluid Level	FULL					
Depth-Driller	7394			Max. Rec. Temp.						
Depth-Logger	7406			Est. Cement Top	SEE LOG					
Btm. Log Interval	7406			Unit	District		123 FT. MORGAN			
Top Log Interval	6250			Recorded By	HARLING					
Open Hole Size				Witnessed By	PATTERSON/MAJOR					
CASING REC.	Size	Wt/Ft	Grade	Type Joint	Top	Bottom				
Surface String										
Prot. String										
Prod. String	2.875	6.4								
Liner										
PRIMARY CEMENTING DATA										
STRING	Surface	Protection	Production	Liner						
Vol. of Cement										
Type of Cement										
Additive	TIE INTO FDC OF 11-18-1991 GREAT GUNS									
Retarder										











6500

6600

6700

6800

