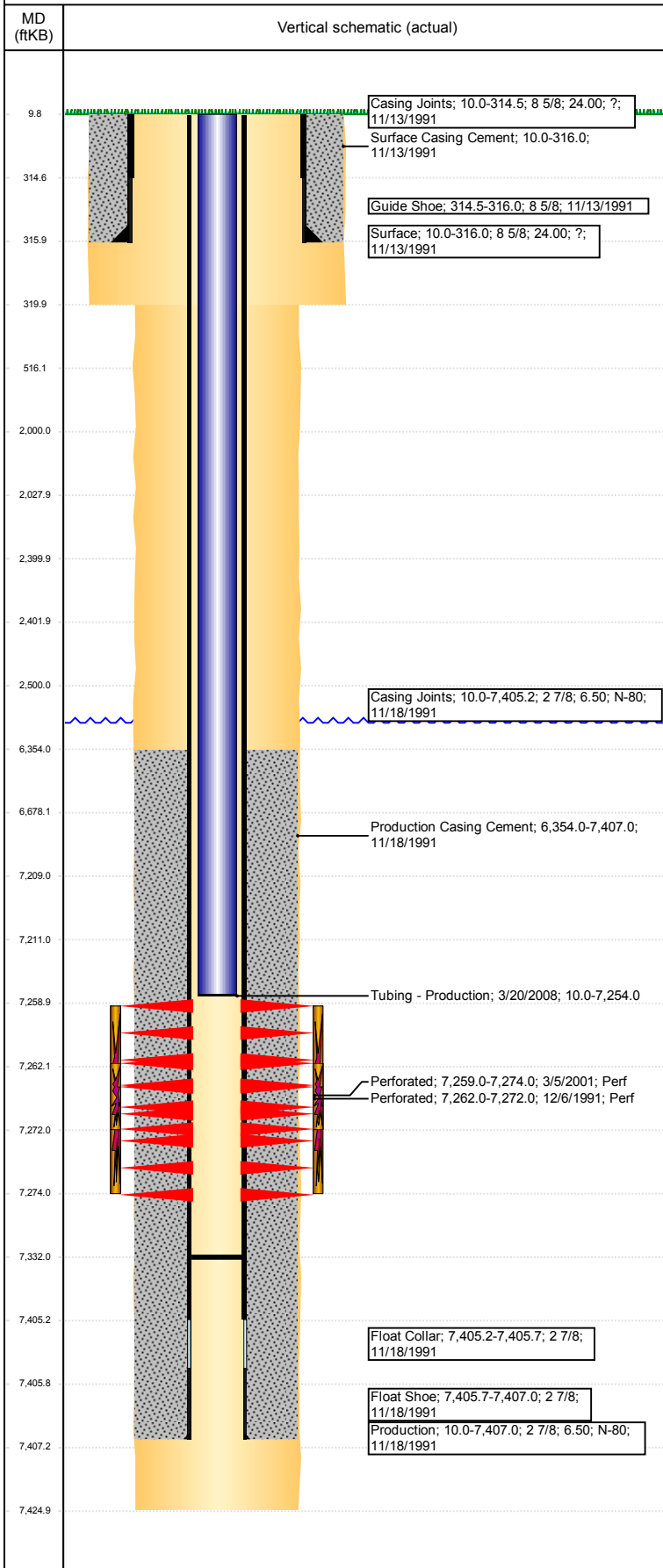


**Well Name: KISSLER K21-12**

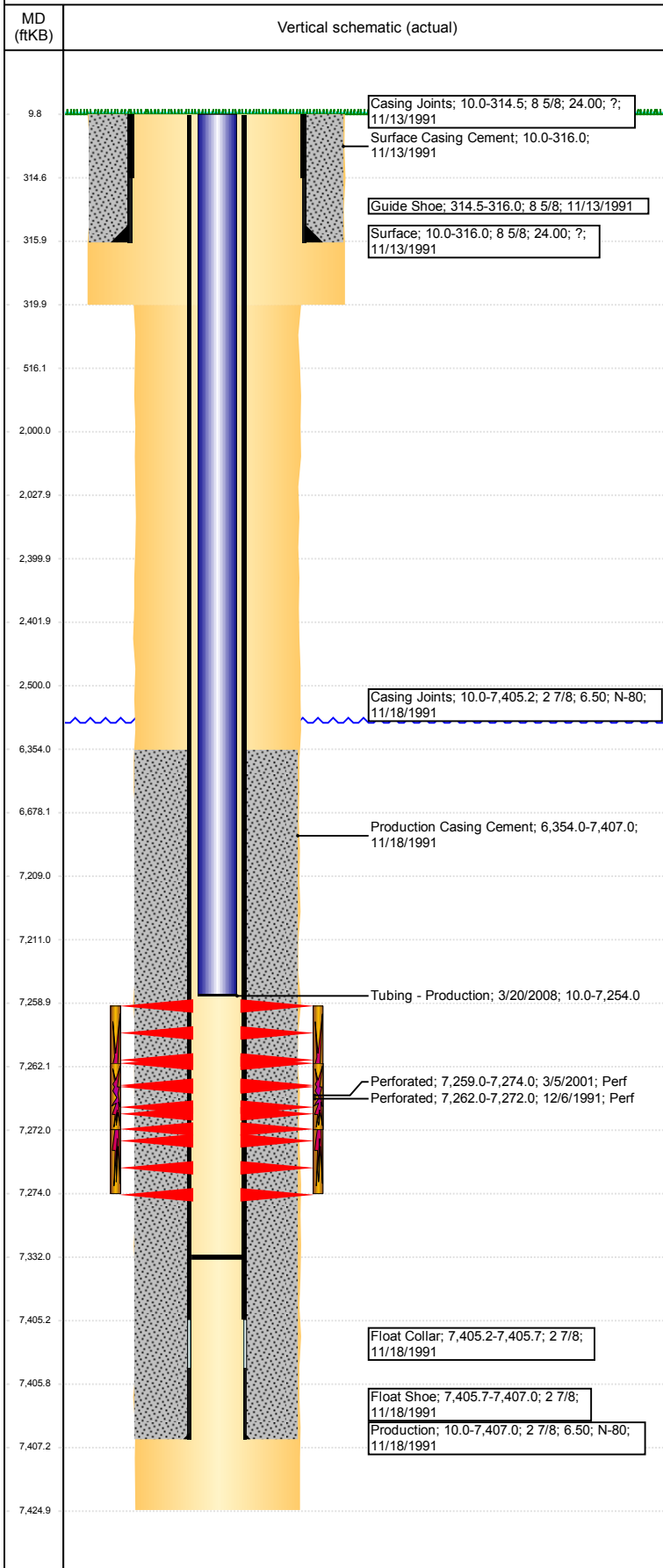
VERTICAL - ORIGINAL HOLE, 10/14/2017 11:07:08 AM



Well Header						
API 05-123-14873	Business Unit DJ BASIN		District 15		Well Config VERTICAL	
Original KB Elevation (ft) 4,766	KB - GL / MSL (ftKB) 10.00		Spud Date 11/13/1991		P & A Date	
Comment						
Directions To Well WCR 42 & 29, NORTH 3/10, EAST 2/10 ALONG SOUTH SIDE OF CANAL, SOUTH INTO						
Congressional Location						
Quarter 3 NW	Quarter 4 SW	Section 21	Township 4	Twntshp N/S Dir N	Range 66	Range E/W Dir W
Bottom Hole Location						
North-South Distance (ft)		From N or S Line		East-West Distance (ft)		From E or W Line
Plug Back Total Depths						
Date	Depth (ftKB)	Method		Com		
11/18/1991	7,403.0	CASING TALLY		SHOE W/ LATCH DOWN BAFFLE DEPTH LOGGER FROM CBL CLEAN OUT CLEAN OUT & LAND TBG		
12/6/1991	7,406.0	CASED HOLE LOG				
2/27/2006	7,304.0	TAG				
3/20/2008	7,332.0	TAG				
Wellbore Sections						
Section Des		Size (in)		Act Top, MD (ftKB)		Act Btm, MD (ftKB)
SURFACE		12 1/4		10		320
PRODUCTION		7 7/8		320		7,425
Zone Statuses						
Zone Name	Status Date	Status	Fluid Type	Job	Prod Method	
CODELL	12/30/1991	PR	Water	DRILLING/CO...	Flowing	
CODELL	3/13/2001	PR		RE-FRAC, 2/28...		
CODELL	4/28/2008	PR		TRI-FRAC, 3/1...		
CODELL	3/1/2010	PR				
CODELL	2/26/2013	PR				
CODELL	3/22/2017	SI				
Casing Strings						
Surface, 316.0ftKB						
Casing Description Surface	Run Date 11/13/1991	OD (in) 8 5/8	Wt/Len (l...) 24.00	Grade ?	Top, MD (ft...) 10.0	MD (ftKB) 316.0
Production, 7,407.0ftKB						
Casing Description Production	Run Date 11/18/1991	OD (in) 2 7/8	Wt/Len (l...) 6.50	Grade N-80	Top, MD (ft...) 10.0	MD (ftKB) 7,407.0
Cement						
Description Surface Casing Cement				Top Depth (ftKB) 10.0		Bottom Depth (ftKB) 316.0
Description Production Casing Cement				Top Depth (ftKB) 6,354.0		Bottom Depth (ftKB) 7,407.0
Description PA Plug - Top of CICR				Top Depth (ftKB) 2,028.0		Bottom Depth (ftKB) 2,400.0
Description PA Plug - Below CICR				Top Depth (ftKB) 2,402.0		Bottom Depth (ftKB) 2,500.0
Description PA Plug - Annulus				Top Depth (ftKB) 2,000.0		Bottom Depth (ftKB) 2,500.0
Description Shoe Plug				Top Depth (ftKB) 10.0		Bottom Depth (ftKB) 516.0
Description PA Plug				Top Depth (ftKB) 6,678.0		Bottom Depth (ftKB) 7,209.0
Tubing Strings						
Tubing Description Tubing - Production	Run Date 3/20/2008	String... 1.9	ID (in) 1.61	Wt (lb/ft) 2.75	Grade J-55	Len (ft) 7,244.00
Set De...						
Tubing Components						
Item Des	OD (in)	Wt (lb/ft)	Grade	Jts	Len (ft)	Btm (ftKB)
Tubing	1.9	2.75	J-55	215	7,242.40	7,252.4
Pump Seating	1.9			1	1.10	7,253.5
Nipple						
Notched collar	1.9				0.50	7,254.0
Other In Hole						
Run Date	Des			OD (in)	Top (ftKB)	Btm (ftKB)
10/10/2017	Cement Retainer			2.8	2,400.0	2,402.0

**Well Name: KISSLER K21-12**

VERTICAL - ORIGINAL HOLE, 10/14/2017 11:07:09 AM



Other In Hole				
Run Date	Des	OD (in)	Top (ftKB)	Btm (ftKB)
10/10/2017	Cast Iron Bridge Plug	2.8	7,209.0	7,211.0

Logs				
Date	Type	Top, MD (ftKB)	Btm, MD (ftKB)	
11/18/1991	COMPENSATED DENSITY	4,090.0	7,403.0	
11/18/1991	INDUCTION	4,090.0	7,400.0	
12/6/1991	CBL/CCL/GR	6,250.0	7,406.0	

Perforation Data					
Linked Zone	Bnch/St g	Sum of Entered Shot Total	Top (ftKB)	Btm (ftKB)	Date
CODELL, ORIGINAL HOLE		0	2,500.00	2,500.00	10/10/2017
		60	7,259.00	7,274.00	3/5/2001
CODELL, ORIGINAL HOLE		41	7,262.00	7,272.00	12/6/1991
<b>Total (Sum)</b>		<b>101</b>			

Stimulation Intervals		
Start Date	Primary Job Type	
12/9/1991	DRILLING/COMPLETION - ORIGINAL	
Technical Result	Tech Result Details	Tech Result Note
Comment		
Start Date	Primary Job Type	
3/8/2001	RE-FRAC	
Technical Result	Tech Result Details	Tech Result Note
Comment		
Start Date	Primary Job Type	
3/18/2008	TRI-FRAC	
Technical Result	Tech Result Details	Tech Result Note
Comment		
DETAILS ARE SPARSE FOR THIS JOB.		