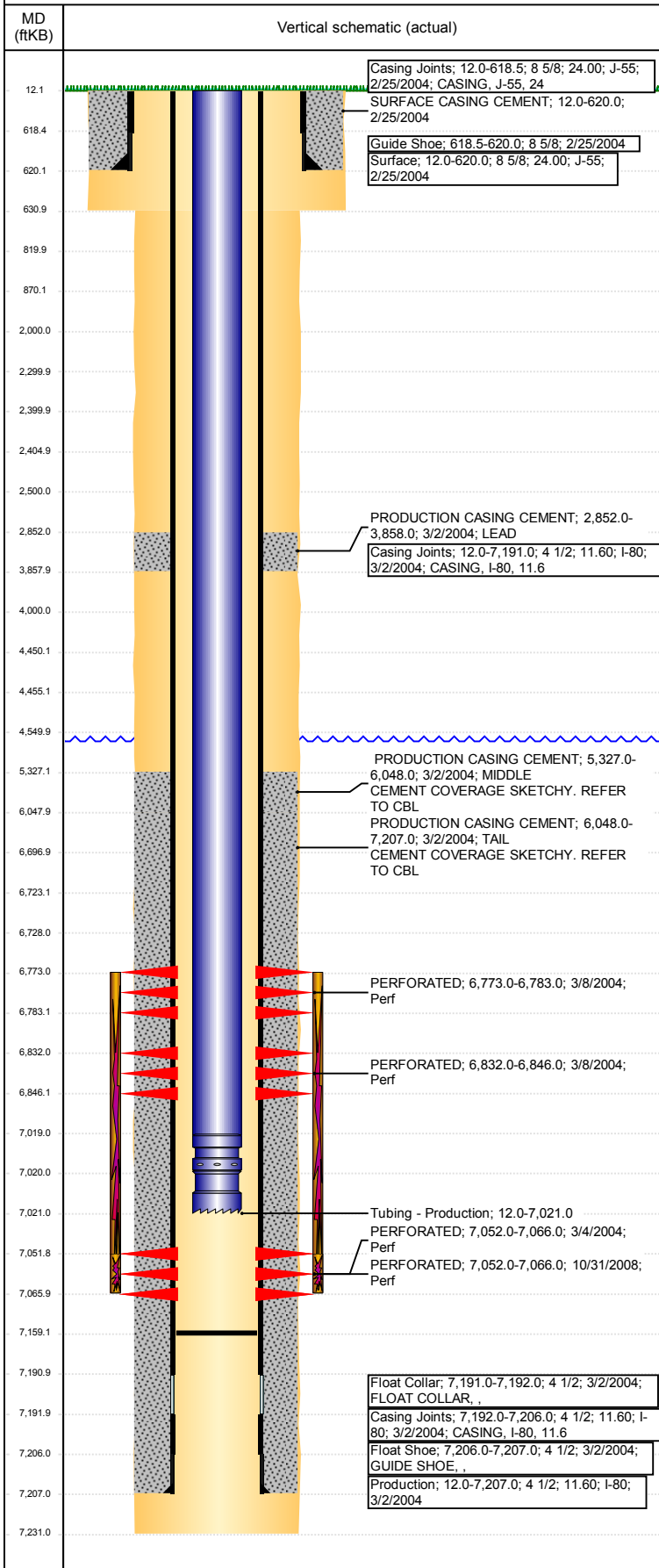


# Wellbore Schematic Input Report

Well Name: JEPSEN 5-2

VERTICAL - ORIGINAL HOLE, 10/13/2017 4:47:17 PM



## Well Header

API 05-123-21971	Business Unit DJ BASIN	District 15	Well Config VERTICAL
Original KB Elevation (ft) 4,762	KB - GL / MSL (ftKB) 12.00	Spud Date 2/25/2004	P & A Date

Comment  
LIMITED ENTRY. FORM 5A FROM 2008 GIVES TUBING DEPTH OF 7019', ANADARKO DATA GIVES 7021'. NO CURRENT TAG DEPTH GIVEN. STATE SHOWS WELL SI SINCE OCTOBER 2016.

Directions To Well

## Congressional Location

Quarter 3 SW	Quarter 4 NW	Section 2	Township 3	Twnshp N/S Dir N	Range 65	Range E/W Dir W
-----------------	-----------------	--------------	---------------	---------------------	-------------	--------------------

## Bottom Hole Location

North-South Distance (ft)	From N or S Line	East-West Distance (ft)	From E or W Line
---------------------------	------------------	-------------------------	------------------

## Plug Back Total Depths

Date	Depth (ftKB)	Method	Com
3/2/2004	7,191.0	CASING TALLY	TOP OF FLOAT COLLAR
3/4/2004	7,159.0	CASED HOLE LOG	DEPTH LOGGER ON CBL

## Wellbore Sections

Section Des	Size (in)	Act Top, MD (ftKB)	Act Btm, MD (ftKB)
SURFACE	12 1/4	12	631
PRODUCTION	7 7/8	631	7,231

## Zone Statuses

Zone Name	Status Date	Status	Fluid Type	Job	Prod Method
NIOBRARA	3/26/2004	PR	Water	DRILLING/CO...	Flowing
NIOBRARA	1/26/2014	PR		DRILLING/CO...	Flowing
CODELL	3/26/2004	PR	Water	RE-FRAC, 10/2...	Flowing
CODELL	12/15/2008	PR		RE-FRAC, 10/2...	Flowing
CODELL	1/26/2014	PR	Water		Flowing
NIOBRARA-C...	1/26/2014	PR	Water		Flowing
NIOBRARA-C...	10/27/2016	SI			

## Casing Strings

### Surface, 620.0ftKB

Casing Description	Run Date	OD (in)	Wt/Len (l...)	Grade	Top, MD (ft...)	MD (ftKB)
Surface	2/25/2004	8 5/8	24.00	J-55	12.0	620.0

### Production, 7,207.0ftKB

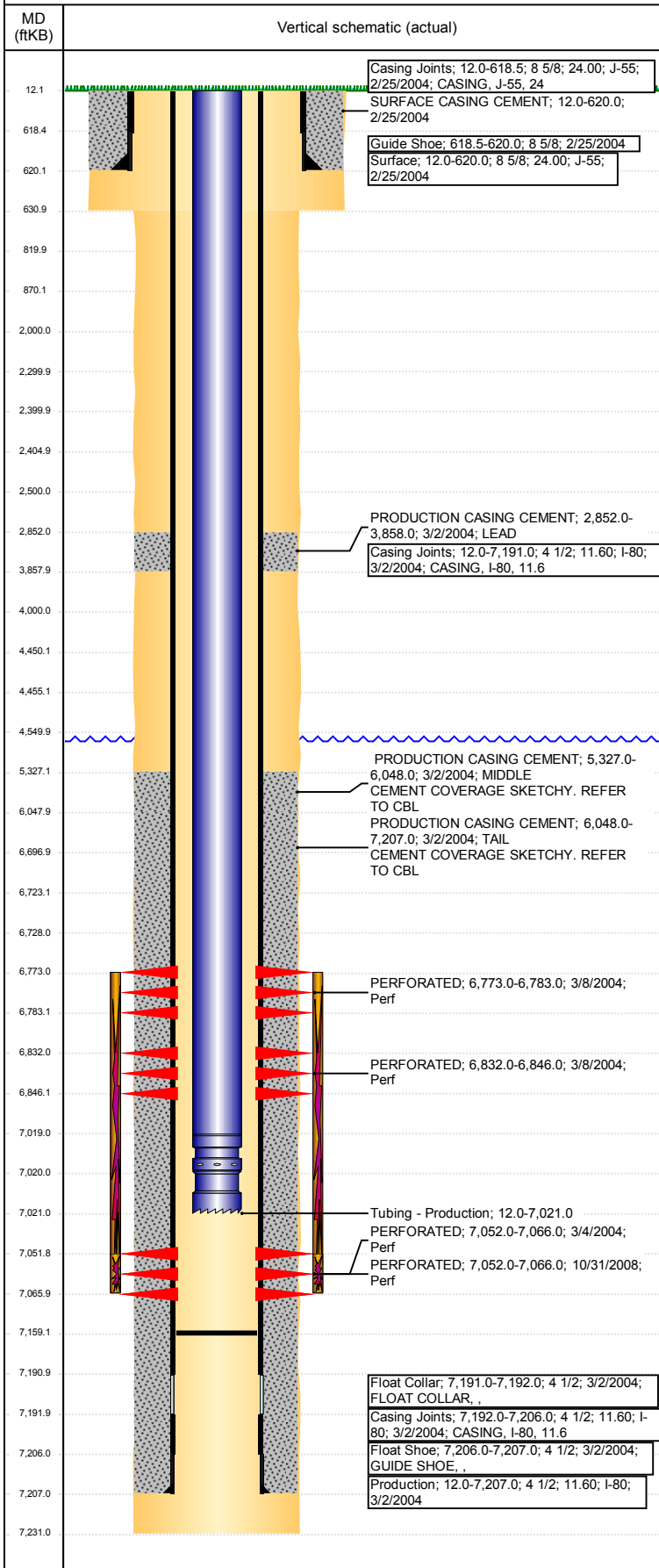
Casing Description	Run Date	OD (in)	Wt/Len (l...)	Grade	Top, MD (ft...)	MD (ftKB)
Production	3/2/2004	4 1/2	11.60	I-80	12.0	7,207.0

## Cement

Description	Top Depth (ftKB)	Bottom Depth (ftKB)
SURFACE CASING CEMENT	12.0	620.0
PRODUCTION CASING CEMENT	2,852.0	3,858.0
PRODUCTION CASING CEMENT	5,327.0	6,048.0
PRODUCTION CASING CEMENT	6,048.0	7,207.0
Dump Bail	6,697.0	6,723.0
Balance Plug	4,455.0	4,550.0
Balance Plug	4,000.0	4,450.0
Cement Squeeze	4,000.0	4,550.0
Balance Plug	2,405.0	2,500.0
Balance Plug	2,300.0	2,400.0
Cement Squeeze	2,000.0	2,500.0
Balance Plug	820.0	870.0
Balance Plug	620.0	820.0
Balance Plug	12.0	620.0

Well Name: JEPSEN 5-2

VERTICAL - ORIGINAL HOLE, 10/13/2017 4:47:18 PM



## Tubing Strings

Tubing Description	Run Date	String...	ID (in)	Wt (lb/ft)	Grade	Len (ft)	Set De...
Tubing - Production		2 3/8	2.00			7,009.00	

## Tubing Components

Item Des	OD (in)	Wt (lb/ft)	Grade	Jts	Len (ft)	Btm (ftKB)	Btm (TVD) (ftKB)
Tubing	2 3/8			225	7,007.00	7,019.0	
Seal Nipple	2 3/8			1	1.00	7,020.0	
Notched collar	2 3/8			1	1.00	7,021.0	

Tubing Description	Run Date	String...	ID (in)	Wt (lb/ft)	Grade	Len (ft)	Set De...
PRODUCTION TUBING	3/18/2004	2 3/8			J55	7,008.00	

## Tubing Components

Item Des	OD (in)	Wt (lb/ft)	Grade	Jts	Len (ft)	Btm (ftKB)	Btm (TVD) (ftKB)
TUBING, J-55, 4.7	2 3/8		J55	225	7,006.00	7,018.0	
SEATING NIPPLE, , 4.7	2 3/8			1	1.00	7,019.0	
NOTCHED COLLAR, , 4.7	2 3/8			1	1.00	7,020.0	

## Other In Hole

Run Date	Des	OD (in)	Top (ftKB)	Btm (ftKB)
10/9/2017	Cement Retainer	4	4,450.0	4,455.0
10/9/2017	Cement Retainer	4	2,400.0	2,405.0
10/9/2017	Cast Iron Bridge Plug	4	6,723.0	6,728.0

## Logs

Date	Type	Top, MD (ftKB)	Btm, MD (ftKB)
3/1/2004	COMPENSATED DENSITY	4,100.0	7,193.0
3/1/2004	INDUCTION	650.0	7,213.0
3/4/2004	CEMENT BOND	5,000.0	7,153.0

## Perforation Data

Linked Zone	Bnch/St g	Sum of Entered Shot Total	Top (ftKB)	Btm (ftKB)	Date
		0	2,500.00	2,500.00	10/9/2017
		0	4,000.00	4,000.00	10/9/2017
		0	4,550.00	4,550.00	10/9/2017
NIOBRARA, ORIGINAL HOLE	A	3	6,773.00	6,783.00	3/8/2004
NIOBRARA, ORIGINAL HOLE	B	5	6,832.00	6,846.00	3/8/2004
CODELL, ORIGINAL HOLE		56	7,052.00	7,066.00	10/31/2008
CODELL, ORIGINAL HOLE		14	7,052.00	7,066.00	3/4/2004

## Total (Sum)

78			
----	--	--	--

## Stimulation Intervals

Start Date	Primary Job Type	
3/9/2004	DRILLING/COMPLETION - ORIGINAL	
Technical Result	Tech Result Details	Tech Result Note

## Comment

CODELL-NIOBRARA

Start Date	Primary Job Type	
11/7/2008	RE-FRAC	
Technical Result	Tech Result Details	Tech Result Note

## Comment

CODELL REFRAC