

SRC ENERGY

Location: COLORADO Slot: SLOT#14 DONN 30N-20B-L (758°FNL & 250°FEL, SEC.21)
Field: WELD COUNTY (NAD83, TRUE NORTH) Well: DONN 30N-20B-L
Facility: SEC.21-T06N-R66W Wellbore: DONN 30N-20B-L PWB

| | |
|--|--|
| Plot reference wellpath is DONN 30N-20B-L PWP (REV.8.0) | Grid System: NAD83 / Lambert Colorado SP, Northern Zone (501), US feet |
| True vertical depths are referenced to PRECISION DRILLING (25) (RKB) | North Reference: True north |
| Measured depths are referenced to PRECISION DRILLING (25) (RKB) | Scale: True distance |
| PRECISION DRILLING (25) (RKB) to Mean Sea Level: 4778 feet | Depths are in feet |
| Mean Sea Level to Mud line (At Slot: SLOT#14 DONN 30N-20B-L (758°FNL & 250°FEL, SEC.21)): 0 feet | Created by: doddanna on 2017-08-25 |
| Coordinates are in feet referenced to Slot | Database: Denver DB |

Location Information

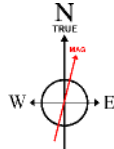
| Facility Name | | | Grid East (US ft) | Grid North (US ft) | Latitude | Longitude |
|---|--------------|--------------|-------------------|--------------------|----------------|-----------------|
| SEC.21-T06N-R66W | | | 3201671.604 | 1417148.268 | 40°28'34.342"N | 104°46'27.660"W |
| Slot | Local N (ft) | Local E (ft) | Grid East (US ft) | Grid North (US ft) | Latitude | Longitude |
| SLOT#14 DONN 30N-20B-L (758°FNL & 250°FEL, SEC.21) | 1043.73 | 25.04 | 3201888.099 | 1418192.127 | 40°28'44.656"N | 104°46'27.336"W |
| PRECISION DRILLING (25) (RKB) to Mud line (At Slot: SLOT#14 DONN 30N-20B-L (758°FNL & 250°FEL, SEC.21)) | | | | | 4778ft | |
| Mean Sea Level to Mud line (At Slot: SLOT#14 DONN 30N-20B-L (758°FNL & 250°FEL, SEC.21)) | | | | | 0ft | |
| PRECISION DRILLING (25) (RKB) to Mean Sea Level | | | | | 4778ft | |

Survey Program

| Start MD (ft) | End MD (ft) | Tool | Model | Log Name/Comment | Wellbore |
|---------------|-------------|--------------------|---|------------------|--------------------|
| 25.00 | 1750.00 | BHI NavTrak | Custom BHI NavTrak (Standard Rotating-Axial Cor) (Rockies 0.03Gt model) | | DONN 30N-20B-L PWB |
| 1750.00 | 17763.35 | BHI AutoTrak Curve | Custom BHI AutoTrak Curve (FR1, Short) (Rockies 0.03Gt model) | | DONN 30N-20B-L PWB |

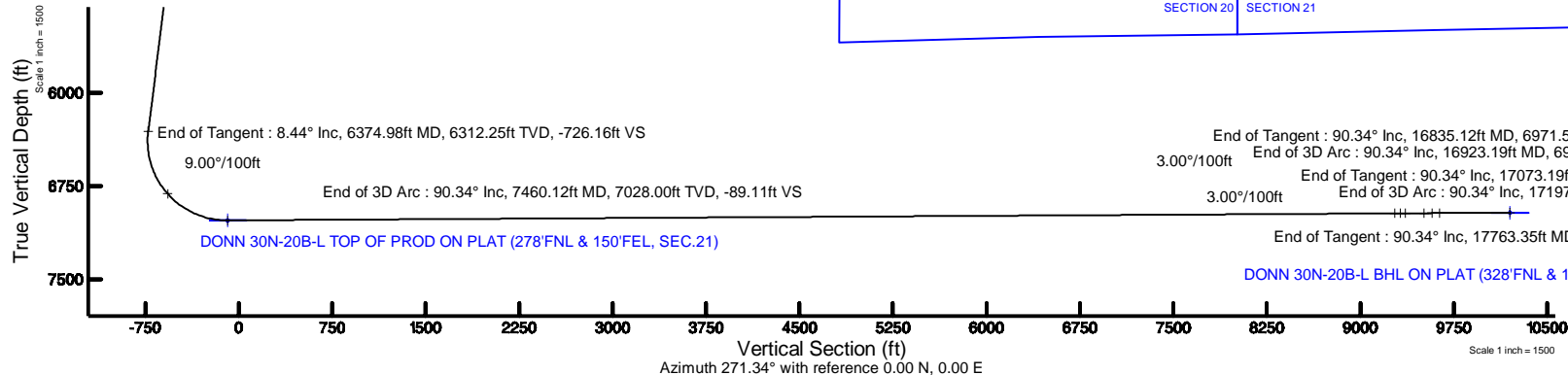


SRC ENERGY



BGGM (1900.0 to 2019.0) Dip: 66.90° Field: 52436.6 nT
Magnetic North is 8.38 degrees East of True North (at 8/15/2017)

To correct azimuth from Magnetic to True add 8.38 degrees



Targets

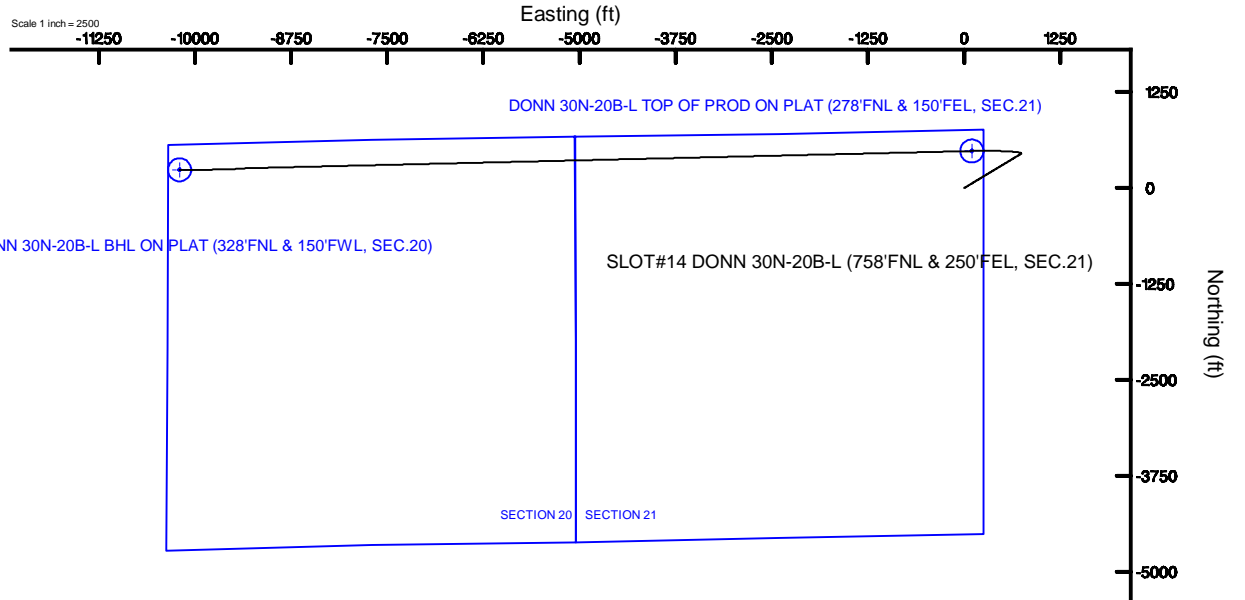
| Name | MD (ft) | TVD (ft) | Local N (ft) | Local E (ft) | Grid East (US ft) | Grid North (US ft) | Latitude | Longitude |
|--|----------|----------|--------------|--------------|-------------------|--------------------|----------------|-----------------|
| SEC.20-T06N-R66W | | 0.00 | 20.04 | 0.00 | 3201887.93 | 1418212.16 | 40°28'44.854"N | 104°46'27.336"W |
| SEC.21-T06N-R66W | | 40.00 | -3862.77 | -6166.64 | 3195753.51 | 1414279.17 | 40°28'06.478"N | 104°47'47.123"W |
| DONN 30N-20B-L BHL ON PLAT (328°FNL & 150°FWL, SEC.20) | 17763.35 | 6966.00 | 238.55 | -10199.40 | 3191687.47 | 1418347.19 | 40°28'46.992"N | 104°48'39.323"W |
| DONN 30N-20B-L TOP OF PROD ON PLAT (278°FNL & 150°FEL, SEC.21) | 7460.12 | 7028.00 | 482.72 | 100.43 | 3201984.57 | 1418675.64 | 40°28'49.426"N | 104°46'26.036"W |

Hole and Casing Sections

| Name | Start MD (ft) | End MD (ft) | Interval (ft) | Start TVD (ft) | End TVD (ft) | Start Local N (ft) | Start Local E (ft) | End Local N (ft) | End Local E (ft) | Wellbore |
|------------------------|---------------|-------------|---------------|----------------|--------------|--------------------|--------------------|------------------|------------------|--------------------|
| 13.5in Open Hole | 25.00 | 1750.00 | 1725.00 | 25.00 | 1737.35 | 0.00 | 0.00 | 94.00 | 155.71 | DONN 30N-20B-L PWB |
| 9.625in Casing Surface | 25.00 | 1750.00 | 1725.00 | 25.00 | 1737.35 | 0.00 | 0.00 | 94.00 | 155.71 | DONN 30N-20B-L PWB |
| 8.5in Open Hole | 1750.00 | 17763.35 | 16013.35 | 1737.35 | 6966.00 | 94.00 | 155.71 | -10199.40 | -10199.40 | DONN 30N-20B-L PWB |

Well Profile Data

| Design Comment | MD (ft) | Inc (°) | Az (°) | TVD (ft) | Local N (ft) | Local E (ft) | DLS (°/100ft) | VS (ft) |
|----------------|----------|---------|---------|----------|--------------|--------------|---------------|----------|
| Tie On | 25.00 | 0.000 | 58.882 | 25.00 | 0.00 | 0.00 | 0.00 | 0.00 |
| End of Tangent | 300.00 | 0.000 | 58.882 | 300.00 | 0.00 | 0.00 | 0.00 | 0.00 |
| End of Build | 721.93 | 8.439 | 58.882 | 720.41 | 16.03 | 26.55 | 2.00 | -26.17 |
| End of Tangent | 6374.98 | 8.439 | 58.882 | 6312.25 | 444.76 | 736.76 | 0.00 | -726.16 |
| End of 3D Arc | 7460.12 | 90.345 | 268.642 | 7028.00 | 482.72 | 100.43 | 9.00 | -89.11 |
| End of Tangent | 16835.12 | 90.345 | 268.642 | 6971.55 | 260.54 | -9271.77 | 0.00 | 9275.33 |
| End of 3D Arc | 16923.19 | 90.345 | 266.000 | 6971.02 | 256.43 | -9359.73 | 3.00 | 9363.17 |
| End of Tangent | 17073.19 | 90.345 | 266.000 | 6970.12 | 245.96 | -9509.36 | 0.00 | 9512.51 |
| End of 3D Arc | 17197.13 | 90.341 | 269.718 | 6969.37 | 241.33 | -9633.19 | 3.00 | 9636.20 |
| End of Tangent | 17763.35 | 90.341 | 269.718 | 6966.00 | 238.55 | -10199.40 | 0.00 | 10202.19 |



End of Tangent : 90.34° Inc, 16835.12ft MD, 6971.55ft TVD, 9275.33ft VS
3.00°/100ft End of 3D Arc : 90.34° Inc, 16923.19ft MD, 6971.02ft TVD, 9363.17ft VS
End of Tangent : 90.34° Inc, 17073.19ft MD, 6970.12ft TVD, 9512.51ft VS
3.00°/100ft End of 3D Arc : 90.34° Inc, 17197.13ft MD, 6969.37ft TVD, 9636.20ft VS
End of Tangent : 90.34° Inc, 17763.35ft MD, 6966.00ft TVD, 10202.19ft VS

DONN 30N-20B-L BHL ON PLAT (328°FNL & 150°FWL, SEC.20)

~VERSION INFORMATION

VERS. 2.0 : CWLS LOG ASCII STANDARD-VERSION 2.0

WRAP. NO : ASCII DATA SECTION CONTAINS ONE ROW PER WELLPATH STATION

~WELL INFORMATION

| #MNEM | .UNITS | DATA | :DESCRIPTION |
|-------|--------|--------------------------------|-------------------------------|
| #---- | .----- | ---- | :----- |
| STRT | .ft | 0.00 | :START MD |
| STOP | .ft | 17763.35 | :STOP MD |
| STEP | .ft | 0.0 | :STEP (non-uniform increment) |
| NULL | . | -999.99 | :NULL |
| COMP | . | SRC ENERGY | :OPERATOR |
| WELL | . | DONN 30N-20B-L | :WELL |
| FLD | . | WELD COUNTY (NAD83,TRUE NORTH) | :FIELD |
| LOC | . | COLORADO | :AREA (aka: Location) |
| CNTY | . | N/A | :COUNTY |
| STAT | . | N/A | :STATE |
| CTRY | . | N/A | :COUNTRY |
| SRVC | . | Baker Hughes | :CONTRACTOR |
| DATE | . | 08/16/2017 | :LOG REV DATE |
| API | . | | :API NUMBER |

~OTHER INFORMATION

#Software: WellArchitect(R) Version 5.1

| #MNEM | .UNITS | DATA | :DESCRIPTION |
|---------------|--------|---|----------------------|
| #---- | .----- | ---- | :----- |
| WPTYPE | . | PLANNED WELLPATH | :WELLPATH TYPE |
| FACILITY | . | SEC.21-T06N-R66W | :FACILITY |
| SLOT | . | SLOT#14 DONN 30N-20B-L (758'FNL & 250'FEL, SEC.21):SLOT | |
| WELLBORE | . | DONN 30N-20B-L PWB | :WELLBORE |
| WELLPATH | . | DONN 30N-20B-L PWP (REV-B.0) | :WELLPATH |
| MDREFPT | . | PRECISION DRILLING (25') (RKB) | :MD REFERENCE POINT |
| TVDREFPT | . | PRECISION DRILLING (25') (RKB) | :TVD REFERENCE POINT |
| LCLREFPT | . | Slot | :LOCAL COORDINATE |
| REFERENCE PT | | | |
| VSAZIMUTH.deg | | 271.34 | :VERTICAL SECTION |
| AZIMUTH | | | |
| VSORIGN .ft | | 0.00 | :VERTICAL SECTION |
| ORIGIN NORTH | | | |
| VSORIGE .ft | | 0.00 | :VERTICAL SECTION |
| ORIGIN EAST | | | |

~CURVE (WELLPATH) INFORMATION

| #MNEM | .UNITS | :DESCRIPTION |
|--------|--------|-----------------------------------|
| #---- | .----- | :----- |
| DEPT | .ft | :MEASURED DEPTH |
| INC | .deg | :INCLINATION |
| AZI | .deg | :AZIMUTH |
| TVD | .ft | :TRUE VERTICAL DEPTH |
| SECT | .ft | :CROSS SECTION (CURTAIN/VERTICAL) |
| LOCALN | .ft | :LOCAL NORTH |

DONN_30N-20B-L_PWP__REV-B.0_.las

LOCALE .ft :LOCAL EAST
 LAT .deg :LATITUDE
 LONG .deg :LONGITUDE
 DLS .deg/100ft :DOGLEG SEVERITY

~ASCII DATA

| | | | | | | | |
|--------------|------|-------|---------|---------|--------|--------|------------|
| 0.00 | 0.00 | 58.88 | 0.00 | 0.00 | 0.00 | 0.00 | 40.4790710 |
| -104.7742600 | 0.00 | | | | | | |
| 25.00 | 0.00 | 58.88 | 25.00 | 0.00 | 0.00 | 0.00 | 40.4790710 |
| -104.7742600 | 0.00 | | | | | | |
| 125.00 | 0.00 | 58.88 | 125.00 | 0.00 | 0.00 | 0.00 | 40.4790710 |
| -104.7742600 | 0.00 | | | | | | |
| 225.00 | 0.00 | 58.88 | 225.00 | 0.00 | 0.00 | 0.00 | 40.4790710 |
| -104.7742600 | 0.00 | | | | | | |
| 300.00 | 0.00 | 58.88 | 300.00 | 0.00 | 0.00 | 0.00 | 40.4790710 |
| -104.7742600 | 0.00 | | | | | | |
| 325.00 | 0.50 | 58.88 | 325.00 | -0.09 | 0.06 | 0.09 | 40.4790712 |
| -104.7742597 | 2.00 | | | | | | |
| 425.00 | 2.50 | 58.88 | 424.96 | -2.30 | 1.41 | 2.33 | 40.4790749 |
| -104.7742516 | 2.00 | | | | | | |
| 525.00 | 4.50 | 58.88 | 524.77 | -7.45 | 4.56 | 7.56 | 40.4790835 |
| -104.7742328 | 2.00 | | | | | | |
| 625.00 | 6.50 | 58.88 | 624.30 | -15.54 | 9.52 | 15.77 | 40.4790971 |
| -104.7742033 | 2.00 | | | | | | |
| 721.93 | 8.44 | 58.88 | 720.41 | -26.17 | 16.03 | 26.55 | 40.4791150 |
| -104.7741646 | 2.00 | | | | | | |
| 725.00 | 8.44 | 58.88 | 723.44 | -26.55 | 16.26 | 26.94 | 40.4791156 |
| -104.7741632 | 0.00 | | | | | | |
| 825.00 | 8.44 | 58.88 | 822.36 | -38.93 | 23.85 | 39.50 | 40.4791365 |
| -104.7741180 | 0.00 | | | | | | |
| 925.00 | 8.44 | 58.88 | 921.28 | -51.32 | 31.43 | 52.06 | 40.4791573 |
| -104.7740728 | 0.00 | | | | | | |
| 1025.00 | 8.44 | 58.88 | 1020.20 | -63.70 | 39.01 | 64.63 | 40.4791781 |
| -104.7740277 | 0.00 | | | | | | |
| 1125.00 | 8.44 | 58.88 | 1119.11 | -76.08 | 46.60 | 77.19 | 40.4791989 |
| -104.7739825 | 0.00 | | | | | | |
| 1225.00 | 8.44 | 58.88 | 1218.03 | -88.46 | 54.18 | 89.75 | 40.4792197 |
| -104.7739374 | 0.00 | | | | | | |
| 1325.00 | 8.44 | 58.88 | 1316.95 | -100.85 | 61.77 | 102.32 | 40.4792405 |
| -104.7738922 | 0.00 | | | | | | |
| 1425.00 | 8.44 | 58.88 | 1415.86 | -113.23 | 69.35 | 114.88 | 40.4792614 |
| -104.7738470 | 0.00 | | | | | | |
| 1525.00 | 8.44 | 58.88 | 1514.78 | -125.61 | 76.93 | 127.44 | 40.4792822 |
| -104.7738019 | 0.00 | | | | | | |
| 1625.00 | 8.44 | 58.88 | 1613.70 | -137.99 | 84.52 | 140.01 | 40.4793030 |
| -104.7737567 | 0.00 | | | | | | |
| 1725.00 | 8.44 | 58.88 | 1712.62 | -150.38 | 92.10 | 152.57 | 40.4793238 |
| -104.7737116 | 0.00 | | | | | | |
| 1825.00 | 8.44 | 58.88 | 1811.53 | -162.76 | 99.69 | 165.13 | 40.4793446 |
| -104.7736664 | 0.00 | | | | | | |
| 1925.00 | 8.44 | 58.88 | 1910.45 | -175.14 | 107.27 | 177.70 | 40.4793654 |
| -104.7736212 | 0.00 | | | | | | |

DONN_30N-20B-L_PWP__REV-B.0_.las

| | | | | | | | |
|--------------|------|-------|---------|---------|--------|--------|------------|
| 2025.00 | 8.44 | 58.88 | 2009.37 | -187.52 | 114.85 | 190.26 | 40.4793863 |
| -104.7735761 | 0.00 | | | | | | |
| 2125.00 | 8.44 | 58.88 | 2108.29 | -199.91 | 122.44 | 202.82 | 40.4794071 |
| -104.7735309 | 0.00 | | | | | | |
| 2225.00 | 8.44 | 58.88 | 2207.20 | -212.29 | 130.02 | 215.39 | 40.4794279 |
| -104.7734858 | 0.00 | | | | | | |
| 2325.00 | 8.44 | 58.88 | 2306.12 | -224.67 | 137.61 | 227.95 | 40.4794487 |
| -104.7734406 | 0.00 | | | | | | |
| 2425.00 | 8.44 | 58.88 | 2405.04 | -237.05 | 145.19 | 240.51 | 40.4794695 |
| -104.7733954 | 0.00 | | | | | | |
| 2525.00 | 8.44 | 58.88 | 2503.96 | -249.44 | 152.78 | 253.08 | 40.4794903 |
| -104.7733503 | 0.00 | | | | | | |
| 2625.00 | 8.44 | 58.88 | 2602.87 | -261.82 | 160.36 | 265.64 | 40.4795112 |
| -104.7733051 | 0.00 | | | | | | |
| 2725.00 | 8.44 | 58.88 | 2701.79 | -274.20 | 167.94 | 278.20 | 40.4795320 |
| -104.7732600 | 0.00 | | | | | | |
| 2825.00 | 8.44 | 58.88 | 2800.71 | -286.58 | 175.53 | 290.77 | 40.4795528 |
| -104.7732148 | 0.00 | | | | | | |
| 2925.00 | 8.44 | 58.88 | 2899.63 | -298.97 | 183.11 | 303.33 | 40.4795736 |
| -104.7731696 | 0.00 | | | | | | |
| 3025.00 | 8.44 | 58.88 | 2998.54 | -311.35 | 190.70 | 315.89 | 40.4795944 |
| -104.7731245 | 0.00 | | | | | | |
| 3125.00 | 8.44 | 58.88 | 3097.46 | -323.73 | 198.28 | 328.46 | 40.4796152 |
| -104.7730793 | 0.00 | | | | | | |
| 3225.00 | 8.44 | 58.88 | 3196.38 | -336.11 | 205.86 | 341.02 | 40.4796361 |
| -104.7730342 | 0.00 | | | | | | |
| 3325.00 | 8.44 | 58.88 | 3295.29 | -348.50 | 213.45 | 353.58 | 40.4796569 |
| -104.7729890 | 0.00 | | | | | | |
| 3425.00 | 8.44 | 58.88 | 3394.21 | -360.88 | 221.03 | 366.15 | 40.4796777 |
| -104.7729438 | 0.00 | | | | | | |
| 3525.00 | 8.44 | 58.88 | 3493.13 | -373.26 | 228.62 | 378.71 | 40.4796985 |
| -104.7728987 | 0.00 | | | | | | |
| 3625.00 | 8.44 | 58.88 | 3592.05 | -385.64 | 236.20 | 391.27 | 40.4797193 |
| -104.7728535 | 0.00 | | | | | | |
| 3725.00 | 8.44 | 58.88 | 3690.96 | -398.03 | 243.78 | 403.84 | 40.4797401 |
| -104.7728084 | 0.00 | | | | | | |
| 3825.00 | 8.44 | 58.88 | 3789.88 | -410.41 | 251.37 | 416.40 | 40.4797610 |
| -104.7727632 | 0.00 | | | | | | |
| 3925.00 | 8.44 | 58.88 | 3888.80 | -422.79 | 258.95 | 428.96 | 40.4797818 |
| -104.7727180 | 0.00 | | | | | | |
| 4025.00 | 8.44 | 58.88 | 3987.72 | -435.17 | 266.54 | 441.53 | 40.4798026 |
| -104.7726729 | 0.00 | | | | | | |
| 4125.00 | 8.44 | 58.88 | 4086.63 | -447.56 | 274.12 | 454.09 | 40.4798234 |
| -104.7726277 | 0.00 | | | | | | |
| 4225.00 | 8.44 | 58.88 | 4185.55 | -459.94 | 281.70 | 466.65 | 40.4798442 |
| -104.7725826 | 0.00 | | | | | | |
| 4325.00 | 8.44 | 58.88 | 4284.47 | -472.32 | 289.29 | 479.22 | 40.4798650 |
| -104.7725374 | 0.00 | | | | | | |
| 4425.00 | 8.44 | 58.88 | 4383.39 | -484.70 | 296.87 | 491.78 | 40.4798859 |
| -104.7724922 | 0.00 | | | | | | |
| 4525.00 | 8.44 | 58.88 | 4482.30 | -497.09 | 304.46 | 504.34 | 40.4799067 |
| -104.7724471 | 0.00 | | | | | | |

DONN_30N-20B-L_PWP__REV-B.0_.las

| | | | | | | | |
|--------------|-------|--------|---------|---------|--------|--------|------------|
| 4625.00 | 8.44 | 58.88 | 4581.22 | -509.47 | 312.04 | 516.91 | 40.4799275 |
| -104.7724019 | 0.00 | | | | | | |
| 4725.00 | 8.44 | 58.88 | 4680.14 | -521.85 | 319.62 | 529.47 | 40.4799483 |
| -104.7723568 | 0.00 | | | | | | |
| 4825.00 | 8.44 | 58.88 | 4779.06 | -534.23 | 327.21 | 542.03 | 40.4799691 |
| -104.7723116 | 0.00 | | | | | | |
| 4925.00 | 8.44 | 58.88 | 4877.97 | -546.62 | 334.79 | 554.60 | 40.4799899 |
| -104.7722664 | 0.00 | | | | | | |
| 5025.00 | 8.44 | 58.88 | 4976.89 | -559.00 | 342.38 | 567.16 | 40.4800108 |
| -104.7722213 | 0.00 | | | | | | |
| 5125.00 | 8.44 | 58.88 | 5075.81 | -571.38 | 349.96 | 579.72 | 40.4800316 |
| -104.7721761 | 0.00 | | | | | | |
| 5225.00 | 8.44 | 58.88 | 5174.72 | -583.76 | 357.55 | 592.29 | 40.4800524 |
| -104.7721309 | 0.00 | | | | | | |
| 5325.00 | 8.44 | 58.88 | 5273.64 | -596.15 | 365.13 | 604.85 | 40.4800732 |
| -104.7720858 | 0.00 | | | | | | |
| 5425.00 | 8.44 | 58.88 | 5372.56 | -608.53 | 372.71 | 617.41 | 40.4800940 |
| -104.7720406 | 0.00 | | | | | | |
| 5525.00 | 8.44 | 58.88 | 5471.48 | -620.91 | 380.30 | 629.98 | 40.4801148 |
| -104.7719955 | 0.00 | | | | | | |
| 5625.00 | 8.44 | 58.88 | 5570.39 | -633.29 | 387.88 | 642.54 | 40.4801357 |
| -104.7719503 | 0.00 | | | | | | |
| 5725.00 | 8.44 | 58.88 | 5669.31 | -645.68 | 395.47 | 655.10 | 40.4801565 |
| -104.7719051 | 0.00 | | | | | | |
| 5825.00 | 8.44 | 58.88 | 5768.23 | -658.06 | 403.05 | 667.67 | 40.4801773 |
| -104.7718600 | 0.00 | | | | | | |
| 5925.00 | 8.44 | 58.88 | 5867.15 | -670.44 | 410.63 | 680.23 | 40.4801981 |
| -104.7718148 | 0.00 | | | | | | |
| 6025.00 | 8.44 | 58.88 | 5966.06 | -682.82 | 418.22 | 692.79 | 40.4802189 |
| -104.7717697 | 0.00 | | | | | | |
| 6125.00 | 8.44 | 58.88 | 6064.98 | -695.21 | 425.80 | 705.36 | 40.4802397 |
| -104.7717245 | 0.00 | | | | | | |
| 6225.00 | 8.44 | 58.88 | 6163.90 | -707.59 | 433.39 | 717.92 | 40.4802606 |
| -104.7716793 | 0.00 | | | | | | |
| 6325.00 | 8.44 | 58.88 | 6262.82 | -719.97 | 440.97 | 730.48 | 40.4802814 |
| -104.7716342 | 0.00 | | | | | | |
| 6374.98 | 8.44 | 58.88 | 6312.25 | -726.16 | 444.76 | 736.76 | 40.4802918 |
| -104.7716116 | 0.00 | | | | | | |
| 6425.00 | 5.07 | 32.45 | 6361.93 | -730.40 | 448.52 | 741.09 | 40.4803021 |
| -104.7715960 | 9.00 | | | | | | |
| 6525.00 | 7.48 | 302.81 | 6461.52 | -727.12 | 455.79 | 737.98 | 40.4803221 |
| -104.7716072 | 9.00 | | | | | | |
| 6625.00 | 15.75 | 283.82 | 6559.42 | -708.29 | 462.57 | 719.30 | 40.4803407 |
| -104.7716744 | 9.00 | | | | | | |
| 6725.00 | 24.53 | 277.96 | 6653.22 | -674.35 | 468.70 | 685.50 | 40.4803575 |
| -104.7717959 | 9.00 | | | | | | |
| 6825.00 | 33.42 | 275.08 | 6740.62 | -626.15 | 474.03 | 637.41 | 40.4803721 |
| -104.7719687 | 9.00 | | | | | | |
| 6925.00 | 42.36 | 273.30 | 6819.46 | -564.88 | 478.42 | 576.22 | 40.4803842 |
| -104.7721887 | 9.00 | | | | | | |
| 7025.00 | 51.31 | 272.05 | 6887.81 | -492.04 | 481.76 | 503.44 | 40.4803934 |
| -104.7724503 | 9.00 | | | | | | |

DONN_30N-20B-L_PWP__REV-B.0_.las

| | | | | | | | |
|--------------|-------|--------|---------|---------|--------|----------|------------|
| 7125.00 | 60.27 | 271.08 | 6943.97 | -409.43 | 483.98 | 420.86 | 40.4803994 |
| -104.7727472 | 9.00 | | | | | | |
| 7225.00 | 69.24 | 270.27 | 6986.57 | -319.07 | 485.02 | 330.50 | 40.4804023 |
| -104.7730719 | 9.00 | | | | | | |
| 7325.00 | 78.22 | 269.55 | 7014.56 | -223.21 | 484.85 | 234.61 | 40.4804018 |
| -104.7734167 | 9.00 | | | | | | |
| 7425.00 | 87.19 | 268.87 | 7027.25 | -124.19 | 483.48 | 135.53 | 40.4803981 |
| -104.7737728 | 9.00 | | | | | | |
| 7460.12 | 90.35 | 268.64 | 7028.00 | -89.11 | 482.72 | 100.43 | 40.4803960 |
| -104.7738990 | 9.00 | | | | | | |
| 7525.00 | 90.35 | 268.64 | 7027.61 | -24.31 | 481.18 | 35.57 | 40.4803918 |
| -104.7741321 | 0.00 | | | | | | |
| 7625.00 | 90.35 | 268.64 | 7027.01 | 75.58 | 478.81 | -64.40 | 40.4803853 |
| -104.7744915 | 0.00 | | | | | | |
| 7725.00 | 90.35 | 268.64 | 7026.41 | 175.47 | 476.44 | -164.37 | 40.4803788 |
| -104.7748509 | 0.00 | | | | | | |
| 7825.00 | 90.35 | 268.64 | 7025.80 | 275.35 | 474.07 | -264.34 | 40.4803723 |
| -104.7752102 | 0.00 | | | | | | |
| 7925.00 | 90.35 | 268.64 | 7025.20 | 375.24 | 471.70 | -364.31 | 40.4803658 |
| -104.7755696 | 0.00 | | | | | | |
| 8025.00 | 90.35 | 268.64 | 7024.60 | 475.13 | 469.33 | -464.28 | 40.4803592 |
| -104.7759289 | 0.00 | | | | | | |
| 8125.00 | 90.35 | 268.64 | 7024.00 | 575.02 | 466.96 | -564.25 | 40.4803527 |
| -104.7762883 | 0.00 | | | | | | |
| 8225.00 | 90.35 | 268.64 | 7023.39 | 674.90 | 464.59 | -664.22 | 40.4803462 |
| -104.7766476 | 0.00 | | | | | | |
| 8325.00 | 90.35 | 268.64 | 7022.79 | 774.79 | 462.22 | -764.19 | 40.4803397 |
| -104.7770070 | 0.00 | | | | | | |
| 8425.00 | 90.35 | 268.64 | 7022.19 | 874.68 | 459.85 | -864.16 | 40.4803332 |
| -104.7773664 | 0.00 | | | | | | |
| 8525.00 | 90.35 | 268.64 | 7021.59 | 974.57 | 457.48 | -964.13 | 40.4803267 |
| -104.7777257 | 0.00 | | | | | | |
| 8625.00 | 90.35 | 268.64 | 7020.99 | 1074.45 | 455.11 | -1064.10 | 40.4803202 |
| -104.7780851 | 0.00 | | | | | | |
| 8725.00 | 90.35 | 268.64 | 7020.38 | 1174.34 | 452.74 | -1164.07 | 40.4803136 |
| -104.7784444 | 0.00 | | | | | | |
| 8825.00 | 90.35 | 268.64 | 7019.78 | 1274.23 | 450.37 | -1264.04 | 40.4803071 |
| -104.7788038 | 0.00 | | | | | | |
| 8925.00 | 90.35 | 268.64 | 7019.18 | 1374.11 | 448.00 | -1364.01 | 40.4803006 |
| -104.7791632 | 0.00 | | | | | | |
| 9025.00 | 90.35 | 268.64 | 7018.58 | 1474.00 | 445.63 | -1463.98 | 40.4802941 |
| -104.7795225 | 0.00 | | | | | | |
| 9125.00 | 90.35 | 268.64 | 7017.98 | 1573.89 | 443.26 | -1563.95 | 40.4802876 |
| -104.7798819 | 0.00 | | | | | | |
| 9225.00 | 90.35 | 268.64 | 7017.37 | 1673.78 | 440.89 | -1663.92 | 40.4802810 |
| -104.7802412 | 0.00 | | | | | | |
| 9325.00 | 90.35 | 268.64 | 7016.77 | 1773.66 | 438.52 | -1763.89 | 40.4802745 |
| -104.7806006 | 0.00 | | | | | | |
| 9425.00 | 90.35 | 268.64 | 7016.17 | 1873.55 | 436.15 | -1863.86 | 40.4802680 |
| -104.7809599 | 0.00 | | | | | | |
| 9525.00 | 90.35 | 268.64 | 7015.57 | 1973.44 | 433.79 | -1963.83 | 40.4802615 |
| -104.7813193 | 0.00 | | | | | | |

DONN_30N-20B-L_PWP__REV-B.0_.las

| | | | | | | | |
|--------------|-------|--------|---------|---------|--------|----------|------------|
| 9625.00 | 90.35 | 268.64 | 7014.96 | 2073.33 | 431.42 | -2063.80 | 40.4802549 |
| -104.7816787 | 0.00 | | | | | | |
| 9725.00 | 90.35 | 268.64 | 7014.36 | 2173.21 | 429.05 | -2163.77 | 40.4802484 |
| -104.7820380 | 0.00 | | | | | | |
| 9825.00 | 90.35 | 268.64 | 7013.76 | 2273.10 | 426.68 | -2263.74 | 40.4802419 |
| -104.7823974 | 0.00 | | | | | | |
| 9925.00 | 90.35 | 268.64 | 7013.16 | 2372.99 | 424.31 | -2363.71 | 40.4802353 |
| -104.7827567 | 0.00 | | | | | | |
| 10025.00 | 90.35 | 268.64 | 7012.56 | 2472.88 | 421.94 | -2463.68 | 40.4802288 |
| -104.7831161 | 0.00 | | | | | | |
| 10125.00 | 90.35 | 268.64 | 7011.95 | 2572.76 | 419.57 | -2563.65 | 40.4802223 |
| -104.7834754 | 0.00 | | | | | | |
| 10225.00 | 90.35 | 268.64 | 7011.35 | 2672.65 | 417.20 | -2663.62 | 40.4802157 |
| -104.7838348 | 0.00 | | | | | | |
| 10325.00 | 90.35 | 268.64 | 7010.75 | 2772.54 | 414.83 | -2763.59 | 40.4802092 |
| -104.7841942 | 0.00 | | | | | | |
| 10425.00 | 90.35 | 268.64 | 7010.15 | 2872.43 | 412.46 | -2863.56 | 40.4802027 |
| -104.7845535 | 0.00 | | | | | | |
| 10525.00 | 90.35 | 268.64 | 7009.55 | 2972.31 | 410.09 | -2963.53 | 40.4801961 |
| -104.7849129 | 0.00 | | | | | | |
| 10625.00 | 90.35 | 268.64 | 7008.94 | 3072.20 | 407.72 | -3063.50 | 40.4801896 |
| -104.7852722 | 0.00 | | | | | | |
| 10725.00 | 90.35 | 268.64 | 7008.34 | 3172.09 | 405.35 | -3163.47 | 40.4801831 |
| -104.7856316 | 0.00 | | | | | | |
| 10825.00 | 90.35 | 268.64 | 7007.74 | 3271.97 | 402.98 | -3263.44 | 40.4801765 |
| -104.7859909 | 0.00 | | | | | | |
| 10925.00 | 90.35 | 268.64 | 7007.14 | 3371.86 | 400.61 | -3363.41 | 40.4801700 |
| -104.7863503 | 0.00 | | | | | | |
| 11025.00 | 90.35 | 268.64 | 7006.53 | 3471.75 | 398.24 | -3463.38 | 40.4801634 |
| -104.7867096 | 0.00 | | | | | | |
| 11125.00 | 90.35 | 268.64 | 7005.93 | 3571.64 | 395.87 | -3563.35 | 40.4801569 |
| -104.7870690 | 0.00 | | | | | | |
| 11225.00 | 90.35 | 268.64 | 7005.33 | 3671.52 | 393.50 | -3663.32 | 40.4801503 |
| -104.7874284 | 0.00 | | | | | | |
| 11325.00 | 90.35 | 268.64 | 7004.73 | 3771.41 | 391.13 | -3763.29 | 40.4801438 |
| -104.7877877 | 0.00 | | | | | | |
| 11425.00 | 90.35 | 268.64 | 7004.13 | 3871.30 | 388.76 | -3863.26 | 40.4801373 |
| -104.7881471 | 0.00 | | | | | | |
| 11525.00 | 90.35 | 268.64 | 7003.52 | 3971.19 | 386.39 | -3963.23 | 40.4801307 |
| -104.7885064 | 0.00 | | | | | | |
| 11625.00 | 90.35 | 268.64 | 7002.92 | 4071.07 | 384.02 | -4063.21 | 40.4801242 |
| -104.7888658 | 0.00 | | | | | | |
| 11725.00 | 90.35 | 268.64 | 7002.32 | 4170.96 | 381.65 | -4163.18 | 40.4801176 |
| -104.7892251 | 0.00 | | | | | | |
| 11825.00 | 90.35 | 268.64 | 7001.72 | 4270.85 | 379.28 | -4263.15 | 40.4801111 |
| -104.7895845 | 0.00 | | | | | | |
| 11925.00 | 90.35 | 268.64 | 7001.12 | 4370.74 | 376.91 | -4363.12 | 40.4801045 |
| -104.7899438 | 0.00 | | | | | | |
| 12025.00 | 90.35 | 268.64 | 7000.51 | 4470.62 | 374.54 | -4463.09 | 40.4800979 |
| -104.7903032 | 0.00 | | | | | | |
| 12125.00 | 90.35 | 268.64 | 6999.91 | 4570.51 | 372.17 | -4563.06 | 40.4800914 |
| -104.7906626 | 0.00 | | | | | | |

DONN_30N-20B-L_PWP__REV-B.0_.las

| | | | | | | | |
|--------------|-------|--------|---------|---------|--------|----------|------------|
| 12225.00 | 90.35 | 268.64 | 6999.31 | 4670.40 | 369.80 | -4663.03 | 40.4800848 |
| -104.7910219 | 0.00 | | | | | | |
| 12325.00 | 90.35 | 268.64 | 6998.71 | 4770.28 | 367.43 | -4763.00 | 40.4800783 |
| -104.7913813 | 0.00 | | | | | | |
| 12425.00 | 90.35 | 268.64 | 6998.10 | 4870.17 | 365.06 | -4862.97 | 40.4800717 |
| -104.7917406 | 0.00 | | | | | | |
| 12525.00 | 90.35 | 268.64 | 6997.50 | 4970.06 | 362.69 | -4962.94 | 40.4800652 |
| -104.7921000 | 0.00 | | | | | | |
| 12625.00 | 90.35 | 268.64 | 6996.90 | 5069.95 | 360.32 | -5062.91 | 40.4800586 |
| -104.7924593 | 0.00 | | | | | | |
| 12725.00 | 90.35 | 268.64 | 6996.30 | 5169.83 | 357.95 | -5162.88 | 40.4800520 |
| -104.7928187 | 0.00 | | | | | | |
| 12825.00 | 90.35 | 268.64 | 6995.70 | 5269.72 | 355.58 | -5262.85 | 40.4800455 |
| -104.7931780 | 0.00 | | | | | | |
| 12925.00 | 90.35 | 268.64 | 6995.09 | 5369.61 | 353.21 | -5362.82 | 40.4800389 |
| -104.7935374 | 0.00 | | | | | | |
| 13025.00 | 90.35 | 268.64 | 6994.49 | 5469.50 | 350.84 | -5462.79 | 40.4800323 |
| -104.7938968 | 0.00 | | | | | | |
| 13125.00 | 90.35 | 268.64 | 6993.89 | 5569.38 | 348.47 | -5562.76 | 40.4800258 |
| -104.7942561 | 0.00 | | | | | | |
| 13225.00 | 90.35 | 268.64 | 6993.29 | 5669.27 | 346.10 | -5662.73 | 40.4800192 |
| -104.7946155 | 0.00 | | | | | | |
| 13325.00 | 90.35 | 268.64 | 6992.69 | 5769.16 | 343.73 | -5762.70 | 40.4800126 |
| -104.7949748 | 0.00 | | | | | | |
| 13425.00 | 90.35 | 268.64 | 6992.08 | 5869.05 | 341.36 | -5862.67 | 40.4800061 |
| -104.7953342 | 0.00 | | | | | | |
| 13525.00 | 90.35 | 268.64 | 6991.48 | 5968.93 | 338.99 | -5962.64 | 40.4799995 |
| -104.7956935 | 0.00 | | | | | | |
| 13625.00 | 90.35 | 268.64 | 6990.88 | 6068.82 | 336.62 | -6062.61 | 40.4799929 |
| -104.7960529 | 0.00 | | | | | | |
| 13725.00 | 90.35 | 268.64 | 6990.28 | 6168.71 | 334.25 | -6162.58 | 40.4799864 |
| -104.7964122 | 0.00 | | | | | | |
| 13825.00 | 90.35 | 268.64 | 6989.67 | 6268.60 | 331.88 | -6262.55 | 40.4799798 |
| -104.7967716 | 0.00 | | | | | | |
| 13925.00 | 90.35 | 268.64 | 6989.07 | 6368.48 | 329.51 | -6362.52 | 40.4799732 |
| -104.7971309 | 0.00 | | | | | | |
| 14025.00 | 90.35 | 268.64 | 6988.47 | 6468.37 | 327.14 | -6462.49 | 40.4799666 |
| -104.7974903 | 0.00 | | | | | | |
| 14125.00 | 90.35 | 268.64 | 6987.87 | 6568.26 | 324.77 | -6562.46 | 40.4799601 |
| -104.7978497 | 0.00 | | | | | | |
| 14225.00 | 90.35 | 268.64 | 6987.27 | 6668.14 | 322.40 | -6662.43 | 40.4799535 |
| -104.7982090 | 0.00 | | | | | | |
| 14325.00 | 90.35 | 268.64 | 6986.66 | 6768.03 | 320.03 | -6762.40 | 40.4799469 |
| -104.7985684 | 0.00 | | | | | | |
| 14425.00 | 90.35 | 268.64 | 6986.06 | 6867.92 | 317.66 | -6862.37 | 40.4799403 |
| -104.7989277 | 0.00 | | | | | | |
| 14525.00 | 90.35 | 268.64 | 6985.46 | 6967.81 | 315.29 | -6962.34 | 40.4799337 |
| -104.7992871 | 0.00 | | | | | | |
| 14625.00 | 90.35 | 268.64 | 6984.86 | 7067.69 | 312.92 | -7062.31 | 40.4799271 |
| -104.7996464 | 0.00 | | | | | | |
| 14725.00 | 90.35 | 268.64 | 6984.26 | 7167.58 | 310.55 | -7162.28 | 40.4799206 |
| -104.8000058 | 0.00 | | | | | | |

DONN_30N-20B-L_PWP__REV-B.0_.las

| | | | | | | | |
|--------------|-------|--------|---------|---------|--------|----------|------------|
| 14825.00 | 90.35 | 268.64 | 6983.65 | 7267.47 | 308.18 | -7262.25 | 40.4799140 |
| -104.8003651 | 0.00 | | | | | | |
| 14925.00 | 90.35 | 268.64 | 6983.05 | 7367.36 | 305.81 | -7362.22 | 40.4799074 |
| -104.8007245 | 0.00 | | | | | | |
| 15025.00 | 90.35 | 268.64 | 6982.45 | 7467.24 | 303.44 | -7462.19 | 40.4799008 |
| -104.8010838 | 0.00 | | | | | | |
| 15125.00 | 90.35 | 268.64 | 6981.85 | 7567.13 | 301.07 | -7562.16 | 40.4798942 |
| -104.8014432 | 0.00 | | | | | | |
| 15225.00 | 90.35 | 268.64 | 6981.24 | 7667.02 | 298.70 | -7662.13 | 40.4798876 |
| -104.8018025 | 0.00 | | | | | | |
| 15325.00 | 90.35 | 268.64 | 6980.64 | 7766.91 | 296.33 | -7762.10 | 40.4798810 |
| -104.8021619 | 0.00 | | | | | | |
| 15425.00 | 90.35 | 268.64 | 6980.04 | 7866.79 | 293.96 | -7862.07 | 40.4798744 |
| -104.8025212 | 0.00 | | | | | | |
| 15525.00 | 90.35 | 268.64 | 6979.44 | 7966.68 | 291.59 | -7962.04 | 40.4798679 |
| -104.8028806 | 0.00 | | | | | | |
| 15625.00 | 90.35 | 268.64 | 6978.84 | 8066.57 | 289.22 | -8062.01 | 40.4798613 |
| -104.8032400 | 0.00 | | | | | | |
| 15725.00 | 90.35 | 268.64 | 6978.23 | 8166.45 | 286.85 | -8161.98 | 40.4798547 |
| -104.8035993 | 0.00 | | | | | | |
| 15825.00 | 90.35 | 268.64 | 6977.63 | 8266.34 | 284.48 | -8261.95 | 40.4798481 |
| -104.8039587 | 0.00 | | | | | | |
| 15925.00 | 90.35 | 268.64 | 6977.03 | 8366.23 | 282.11 | -8361.92 | 40.4798415 |
| -104.8043180 | 0.00 | | | | | | |
| 16025.00 | 90.35 | 268.64 | 6976.43 | 8466.12 | 279.74 | -8461.89 | 40.4798349 |
| -104.8046774 | 0.00 | | | | | | |
| 16125.00 | 90.35 | 268.64 | 6975.83 | 8566.00 | 277.37 | -8561.86 | 40.4798283 |
| -104.8050367 | 0.00 | | | | | | |
| 16225.00 | 90.35 | 268.64 | 6975.22 | 8665.89 | 275.00 | -8661.83 | 40.4798217 |
| -104.8053961 | 0.00 | | | | | | |
| 16325.00 | 90.35 | 268.64 | 6974.62 | 8765.78 | 272.63 | -8761.80 | 40.4798151 |
| -104.8057554 | 0.00 | | | | | | |
| 16425.00 | 90.35 | 268.64 | 6974.02 | 8865.67 | 270.26 | -8861.77 | 40.4798085 |
| -104.8061148 | 0.00 | | | | | | |
| 16525.00 | 90.35 | 268.64 | 6973.42 | 8965.55 | 267.89 | -8961.74 | 40.4798019 |
| -104.8064741 | 0.00 | | | | | | |
| 16625.00 | 90.35 | 268.64 | 6972.82 | 9065.44 | 265.52 | -9061.71 | 40.4797953 |
| -104.8068335 | 0.00 | | | | | | |
| 16725.00 | 90.35 | 268.64 | 6972.21 | 9165.33 | 263.15 | -9161.68 | 40.4797886 |
| -104.8071928 | 0.00 | | | | | | |
| 16825.00 | 90.35 | 268.64 | 6971.61 | 9265.22 | 260.78 | -9261.65 | 40.4797820 |
| -104.8075522 | 0.00 | | | | | | |
| 16835.12 | 90.35 | 268.64 | 6971.55 | 9275.33 | 260.54 | -9271.77 | 40.4797814 |
| -104.8075886 | 0.00 | | | | | | |
| 16923.19 | 90.35 | 266.00 | 6971.02 | 9363.17 | 256.43 | -9359.73 | 40.4797700 |
| -104.8079047 | 3.00 | | | | | | |
| 16925.00 | 90.35 | 266.00 | 6971.01 | 9364.97 | 256.30 | -9361.54 | 40.4797696 |
| -104.8079112 | 0.00 | | | | | | |
| 17025.00 | 90.35 | 266.00 | 6970.41 | 9464.53 | 249.33 | -9461.29 | 40.4797504 |
| -104.8082698 | 0.00 | | | | | | |
| 17073.19 | 90.35 | 266.00 | 6970.12 | 9512.51 | 245.96 | -9509.36 | 40.4797411 |
| -104.8084426 | 0.00 | | | | | | |

DONN_30N-20B-L_PWP__REV-B.0_.las

| | | | | | | | |
|--------------|-------|--------|---------|----------|--------|-----------|------------|
| 17125.00 | 90.34 | 267.55 | 6969.80 | 9564.16 | 243.05 | -9561.09 | 40.4797331 |
| -104.8086285 | 3.00 | | | | | | |
| 17197.13 | 90.34 | 269.72 | 6969.37 | 9636.20 | 241.33 | -9633.19 | 40.4797283 |
| -104.8088877 | 3.00 | | | | | | |
| 17225.00 | 90.34 | 269.72 | 6969.21 | 9664.06 | 241.20 | -9661.06 | 40.4797279 |
| -104.8089879 | 0.00 | | | | | | |
| 17325.00 | 90.34 | 269.72 | 6968.61 | 9764.02 | 240.71 | -9761.06 | 40.4797264 |
| -104.8093473 | 0.00 | | | | | | |
| 17425.00 | 90.34 | 269.72 | 6968.02 | 9863.98 | 240.21 | -9861.06 | 40.4797249 |
| -104.8097068 | 0.00 | | | | | | |
| 17525.00 | 90.34 | 269.72 | 6967.42 | 9963.94 | 239.72 | -9961.05 | 40.4797235 |
| -104.8100662 | 0.00 | | | | | | |
| 17625.00 | 90.34 | 269.72 | 6966.82 | 10063.89 | 239.23 | -10061.05 | 40.4797220 |
| -104.8104257 | 0.00 | | | | | | |
| 17725.00 | 90.34 | 269.72 | 6966.23 | 10163.85 | 238.74 | -10161.05 | 40.4797206 |
| -104.8107851 | 0.00 | | | | | | |
| 17763.35 | 90.34 | 269.72 | 6966.00 | 10202.19 | 238.55 | -10199.40 | 40.4797200 |
| -104.8109230 | 0.00 | | | | | | |

Planned Wellpath Report

DONN 30N-20B-L PWP (REV-B.0)

Page 1 of 6



REFERENCE WELLPATH IDENTIFICATION

| | | | |
|----------|--------------------------------|----------|--|
| Operator | SRC ENERGY | Slot | SLOT#14 DONN 30N-20B-L (758'FNL & 250'FEL, SEC.21) |
| Area | COLORADO | Well | DONN 30N-20B-L |
| Field | WELD COUNTY (NAD83,TRUE NORTH) | Wellbore | DONN 30N-20B-L PWB |
| Facility | SEC.21-T06N-R66W | | |

REPORT SETUP INFORMATION

| | | | |
|---------------------|---|----------------------|--|
| Projection System | NAD83 / Lambert Colorado SP, Northern Zone (501), US feet | Software System | WellArchitect® 5.1 |
| North Reference | True | User | Doddanna |
| Scale | 0.999965 | Report Generated | 8/25/2017 at 11:26:18 AM |
| Convergence at slot | 0.47° East | Database/Source file | Denver DB/DONN_30N-20B-L_PWP__REV-B.0_.xml |

WELLPATH LOCATION

| | Local coordinates | | Grid coordinates | | Geographic coordinates | |
|-----------------------|-------------------|----------|------------------|-----------------|------------------------|-----------------|
| | North[ft] | East[ft] | Easting[US ft] | Northing[US ft] | Latitude | Longitude |
| Slot Location | 1043.73 | 25.04 | 3201888.10 | 1418192.13 | 40°28'44.656"N | 104°46'27.336"W |
| Facility Reference Pt | | | 3201871.60 | 1417148.27 | 40°28'34.342"N | 104°46'27.660"W |
| Field Reference Pt | | | 3171284.48 | 1426358.81 | 40°30'07.643"N | 104°53'02.634"W |

WELLPATH DATUM

| | | | |
|--------------------------|--------------------------------|---|-------------------|
| Calculation method | Minimum curvature | PRECISION DRILLING (25') (RKB) to Facility Vertical Datum | 4778.00ft |
| Horizontal Reference Pt | Slot | PRECISION DRILLING (25') (RKB) to Mean Sea Level | 4778.00ft |
| Vertical Reference Pt | PRECISION DRILLING (25') (RKB) | PRECISION DRILLING (25') (RKB) to Mud Line at Slot (SLOT#14 DONN 30N-20B-L (758'FNL & 250'FEL, SEC.21)) | 4778.00ft |
| MD Reference Pt | PRECISION DRILLING (25') (RKB) | Section Origin | N 0.00, E 0.00 ft |
| Field Vertical Reference | Mean Sea Level | Section Azimuth | 271.34° |

Planned Wellpath Report

DONN 30N-20B-L PWP (REV-B.0)

Page 2 of 6



REFERENCE WELLPATH IDENTIFICATION

| | | | |
|----------|--------------------------------|----------|--|
| Operator | SRC ENERGY | Slot | SLOT#14 DONN 30N-20B-L (758'FNL & 250'FEL, SEC.21) |
| Area | COLORADO | Well | DONN 30N-20B-L |
| Field | WELD COUNTY (NAD83,TRUE NORTH) | Wellbore | DONN 30N-20B-L PWB |
| Facility | SEC.21-T06N-R66W | | |

WELLPATH DATA (188 stations) † = interpolated/extrapolated station

| MD [ft] | Inclination [°] | Azimuth [°] | TVD [ft] | Vert Sect [ft] | North [ft] | East [ft] | DLS [°/100ft] | Comments |
|------------|--------------------|----------------|-------------|-------------------|---------------|--------------|------------------|----------------|
| 0.00† | 0.000 | 58.882 | 0.00 | 0.00 | 0.00 | 0.00 | 0.00 | |
| 25.00 | 0.000 | 58.882 | 25.00 | 0.00 | 0.00 | 0.00 | 0.00 | Tie On |
| 125.00† | 0.000 | 58.882 | 125.00 | 0.00 | 0.00 | 0.00 | 0.00 | |
| 225.00† | 0.000 | 58.882 | 225.00 | 0.00 | 0.00 | 0.00 | 0.00 | |
| 300.00 | 0.000 | 58.882 | 300.00 | 0.00 | 0.00 | 0.00 | 0.00 | End of Tangent |
| 325.00† | 0.500 | 58.882 | 325.00 | -0.09 | 0.06 | 0.09 | 2.00 | |
| 425.00† | 2.500 | 58.882 | 424.96 | -2.30 | 1.41 | 2.33 | 2.00 | |
| 525.00† | 4.500 | 58.882 | 524.77 | -7.45 | 4.56 | 7.56 | 2.00 | |
| 625.00† | 6.500 | 58.882 | 624.30 | -15.54 | 9.52 | 15.77 | 2.00 | |
| 721.93 | 8.439 | 58.882 | 720.41 | -26.17 | 16.03 | 26.55 | 2.00 | End of Build |
| 725.00† | 8.439 | 58.882 | 723.44 | -26.55 | 16.26 | 26.94 | 0.00 | |
| 825.00† | 8.439 | 58.882 | 822.36 | -38.93 | 23.85 | 39.50 | 0.00 | |
| 925.00† | 8.439 | 58.882 | 921.28 | -51.32 | 31.43 | 52.06 | 0.00 | |
| 1025.00† | 8.439 | 58.882 | 1020.20 | -63.70 | 39.01 | 64.63 | 0.00 | |
| 1125.00† | 8.439 | 58.882 | 1119.11 | -76.08 | 46.60 | 77.19 | 0.00 | |
| 1225.00† | 8.439 | 58.882 | 1218.03 | -88.46 | 54.18 | 89.75 | 0.00 | |
| 1325.00† | 8.439 | 58.882 | 1316.95 | -100.85 | 61.77 | 102.32 | 0.00 | |
| 1425.00† | 8.439 | 58.882 | 1415.86 | -113.23 | 69.35 | 114.88 | 0.00 | |
| 1525.00† | 8.439 | 58.882 | 1514.78 | -125.61 | 76.93 | 127.44 | 0.00 | |
| 1625.00† | 8.439 | 58.882 | 1613.70 | -137.99 | 84.52 | 140.01 | 0.00 | |
| 1725.00† | 8.439 | 58.882 | 1712.62 | -150.38 | 92.10 | 152.57 | 0.00 | |
| 1825.00† | 8.439 | 58.882 | 1811.53 | -162.76 | 99.69 | 165.13 | 0.00 | |
| 1925.00† | 8.439 | 58.882 | 1910.45 | -175.14 | 107.27 | 177.70 | 0.00 | |
| 2025.00† | 8.439 | 58.882 | 2009.37 | -187.52 | 114.85 | 190.26 | 0.00 | |
| 2125.00† | 8.439 | 58.882 | 2108.29 | -199.91 | 122.44 | 202.82 | 0.00 | |
| 2225.00† | 8.439 | 58.882 | 2207.20 | -212.29 | 130.02 | 215.39 | 0.00 | |
| 2325.00† | 8.439 | 58.882 | 2306.12 | -224.67 | 137.61 | 227.95 | 0.00 | |
| 2425.00† | 8.439 | 58.882 | 2405.04 | -237.05 | 145.19 | 240.51 | 0.00 | |
| 2525.00† | 8.439 | 58.882 | 2503.96 | -249.44 | 152.78 | 253.08 | 0.00 | |
| 2625.00† | 8.439 | 58.882 | 2602.87 | -261.82 | 160.36 | 265.64 | 0.00 | |
| 2725.00† | 8.439 | 58.882 | 2701.79 | -274.20 | 167.94 | 278.20 | 0.00 | |
| 2825.00† | 8.439 | 58.882 | 2800.71 | -286.58 | 175.53 | 290.77 | 0.00 | |
| 2925.00† | 8.439 | 58.882 | 2899.63 | -298.97 | 183.11 | 303.33 | 0.00 | |
| 3025.00† | 8.439 | 58.882 | 2998.54 | -311.35 | 190.70 | 315.89 | 0.00 | |
| 3125.00† | 8.439 | 58.882 | 3097.46 | -323.73 | 198.28 | 328.46 | 0.00 | |
| 3225.00† | 8.439 | 58.882 | 3196.38 | -336.11 | 205.86 | 341.02 | 0.00 | |
| 3325.00† | 8.439 | 58.882 | 3295.29 | -348.50 | 213.45 | 353.58 | 0.00 | |
| 3425.00† | 8.439 | 58.882 | 3394.21 | -360.88 | 221.03 | 366.15 | 0.00 | |
| 3525.00† | 8.439 | 58.882 | 3493.13 | -373.26 | 228.62 | 378.71 | 0.00 | |
| 3625.00† | 8.439 | 58.882 | 3592.05 | -385.64 | 236.20 | 391.27 | 0.00 | |
| 3725.00† | 8.439 | 58.882 | 3690.96 | -398.03 | 243.78 | 403.84 | 0.00 | |
| 3825.00† | 8.439 | 58.882 | 3789.88 | -410.41 | 251.37 | 416.40 | 0.00 | |
| 3925.00† | 8.439 | 58.882 | 3888.80 | -422.79 | 258.95 | 428.96 | 0.00 | |
| 4025.00† | 8.439 | 58.882 | 3987.72 | -435.17 | 266.54 | 441.53 | 0.00 | |
| 4125.00† | 8.439 | 58.882 | 4086.63 | -447.56 | 274.12 | 454.09 | 0.00 | |

Planned Wellpath Report

DONN 30N-20B-L PWP (REV-B.0)

Page 3 of 6



REFERENCE WELLPATH IDENTIFICATION

| | | | |
|----------|--------------------------------|----------|--|
| Operator | SRC ENERGY | Slot | SLOT#14 DONN 30N-20B-L (758'FNL & 250'FEL, SEC.21) |
| Area | COLORADO | Well | DONN 30N-20B-L |
| Field | WELD COUNTY (NAD83,TRUE NORTH) | Wellbore | DONN 30N-20B-L PWB |
| Facility | SEC.21-T06N-R66W | | |

WELLPATH DATA (188 stations) † = interpolated/extrapolated station

| MD [ft] | Inclination [°] | Azimuth [°] | TVD [ft] | Vert Sect [ft] | North [ft] | East [ft] | DLS [°/100ft] | Comments |
|------------|--------------------|----------------|-------------|-------------------|---------------|--------------|------------------|----------------|
| 4225.00† | 8.439 | 58.882 | 4185.55 | -459.94 | 281.70 | 466.65 | 0.00 | |
| 4325.00† | 8.439 | 58.882 | 4284.47 | -472.32 | 289.29 | 479.22 | 0.00 | |
| 4425.00† | 8.439 | 58.882 | 4383.39 | -484.70 | 296.87 | 491.78 | 0.00 | |
| 4525.00† | 8.439 | 58.882 | 4482.30 | -497.09 | 304.46 | 504.34 | 0.00 | |
| 4625.00† | 8.439 | 58.882 | 4581.22 | -509.47 | 312.04 | 516.91 | 0.00 | |
| 4725.00† | 8.439 | 58.882 | 4680.14 | -521.85 | 319.62 | 529.47 | 0.00 | |
| 4825.00† | 8.439 | 58.882 | 4779.06 | -534.23 | 327.21 | 542.03 | 0.00 | |
| 4925.00† | 8.439 | 58.882 | 4877.97 | -546.62 | 334.79 | 554.60 | 0.00 | |
| 5025.00† | 8.439 | 58.882 | 4976.89 | -559.00 | 342.38 | 567.16 | 0.00 | |
| 5125.00† | 8.439 | 58.882 | 5075.81 | -571.38 | 349.96 | 579.72 | 0.00 | |
| 5225.00† | 8.439 | 58.882 | 5174.72 | -583.76 | 357.55 | 592.29 | 0.00 | |
| 5325.00† | 8.439 | 58.882 | 5273.64 | -596.15 | 365.13 | 604.85 | 0.00 | |
| 5425.00† | 8.439 | 58.882 | 5372.56 | -608.53 | 372.71 | 617.41 | 0.00 | |
| 5525.00† | 8.439 | 58.882 | 5471.48 | -620.91 | 380.30 | 629.98 | 0.00 | |
| 5625.00† | 8.439 | 58.882 | 5570.39 | -633.29 | 387.88 | 642.54 | 0.00 | |
| 5725.00† | 8.439 | 58.882 | 5669.31 | -645.68 | 395.47 | 655.10 | 0.00 | |
| 5825.00† | 8.439 | 58.882 | 5768.23 | -658.06 | 403.05 | 667.67 | 0.00 | |
| 5925.00† | 8.439 | 58.882 | 5867.15 | -670.44 | 410.63 | 680.23 | 0.00 | |
| 6025.00† | 8.439 | 58.882 | 5966.06 | -682.82 | 418.22 | 692.79 | 0.00 | |
| 6125.00† | 8.439 | 58.882 | 6064.98 | -695.21 | 425.80 | 705.36 | 0.00 | |
| 6225.00† | 8.439 | 58.882 | 6163.90 | -707.59 | 433.39 | 717.92 | 0.00 | |
| 6325.00† | 8.439 | 58.882 | 6262.82 | -719.97 | 440.97 | 730.48 | 0.00 | |
| 6374.98 | 8.439 | 58.882 | 6312.25 | -726.16 | 444.76 | 736.76 | 0.00 | End of Tangent |
| 6425.00† | 5.067 | 32.452 | 6361.93 | -730.40 | 448.52 | 741.09 | 9.00 | |
| 6525.00† | 7.480 | 302.813 | 6461.52 | -727.12 | 455.79 | 737.98 | 9.00 | |
| 6625.00† | 15.746 | 283.820 | 6559.42 | -708.29 | 462.57 | 719.30 | 9.00 | |
| 6725.00† | 24.528 | 277.962 | 6653.22 | -674.35 | 468.70 | 685.50 | 9.00 | |
| 6825.00† | 33.421 | 275.079 | 6740.62 | -626.15 | 474.03 | 637.41 | 9.00 | |
| 6925.00† | 42.356 | 273.304 | 6819.46 | -564.88 | 478.42 | 576.22 | 9.00 | |
| 7025.00† | 51.309 | 272.051 | 6887.81 | -492.04 | 481.76 | 503.44 | 9.00 | |
| 7125.00† | 60.274 | 271.079 | 6943.97 | -409.43 | 483.98 | 420.86 | 9.00 | |
| 7225.00† | 69.244 | 270.268 | 6986.57 | -319.07 | 485.02 | 330.50 | 9.00 | |
| 7325.00† | 78.217 | 269.548 | 7014.56 | -223.21 | 484.85 | 234.61 | 9.00 | |
| 7425.00† | 87.192 | 268.874 | 7027.25 | -124.19 | 483.48 | 135.53 | 9.00 | |
| 7460.12 | 90.345 | 268.642 | 7028.00† | -89.11 | 482.72 | 100.43 | 9.00 | End of 3D Arc |
| 7525.00† | 90.345 | 268.642 | 7027.61 | -24.31 | 481.18 | 35.57 | 0.00 | |
| 7625.00† | 90.345 | 268.642 | 7027.01 | 75.58 | 478.81 | -64.40 | 0.00 | |
| 7725.00† | 90.345 | 268.642 | 7026.41 | 175.47 | 476.44 | -164.37 | 0.00 | |
| 7825.00† | 90.345 | 268.642 | 7025.80 | 275.35 | 474.07 | -264.34 | 0.00 | |
| 7925.00† | 90.345 | 268.642 | 7025.20 | 375.24 | 471.70 | -364.31 | 0.00 | |
| 8025.00† | 90.345 | 268.642 | 7024.60 | 475.13 | 469.33 | -464.28 | 0.00 | |
| 8125.00† | 90.345 | 268.642 | 7024.00 | 575.02 | 466.96 | -564.25 | 0.00 | |
| 8225.00† | 90.345 | 268.642 | 7023.39 | 674.90 | 464.59 | -664.22 | 0.00 | |
| 8325.00† | 90.345 | 268.642 | 7022.79 | 774.79 | 462.22 | -764.19 | 0.00 | |
| 8425.00† | 90.345 | 268.642 | 7022.19 | 874.68 | 459.85 | -864.16 | 0.00 | |

Planned Wellpath Report

DONN 30N-20B-L PWP (REV-B.0)

Page 4 of 6



REFERENCE WELLPATH IDENTIFICATION

| | | | |
|----------|--------------------------------|----------|--|
| Operator | SRC ENERGY | Slot | SLOT#14 DONN 30N-20B-L (758'FNL & 250'FEL, SEC.21) |
| Area | COLORADO | Well | DONN 30N-20B-L |
| Field | WELD COUNTY (NAD83,TRUE NORTH) | Wellbore | DONN 30N-20B-L PWB |
| Facility | SEC.21-T06N-R66W | | |

WELLPATH DATA (188 stations) † = interpolated/extrapolated station

| MD [ft] | Inclination [°] | Azimuth [°] | TVD [ft] | Vert Sect [ft] | North [ft] | East [ft] | DLS [°/100ft] | Comments |
|------------|--------------------|----------------|-------------|-------------------|---------------|--------------|------------------|----------|
| 8525.00† | 90.345 | 268.642 | 7021.59 | 974.57 | 457.48 | -964.13 | 0.00 | |
| 8625.00† | 90.345 | 268.642 | 7020.99 | 1074.45 | 455.11 | -1064.10 | 0.00 | |
| 8725.00† | 90.345 | 268.642 | 7020.38 | 1174.34 | 452.74 | -1164.07 | 0.00 | |
| 8825.00† | 90.345 | 268.642 | 7019.78 | 1274.23 | 450.37 | -1264.04 | 0.00 | |
| 8925.00† | 90.345 | 268.642 | 7019.18 | 1374.11 | 448.00 | -1364.01 | 0.00 | |
| 9025.00† | 90.345 | 268.642 | 7018.58 | 1474.00 | 445.63 | -1463.98 | 0.00 | |
| 9125.00† | 90.345 | 268.642 | 7017.98 | 1573.89 | 443.26 | -1563.95 | 0.00 | |
| 9225.00† | 90.345 | 268.642 | 7017.37 | 1673.78 | 440.89 | -1663.92 | 0.00 | |
| 9325.00† | 90.345 | 268.642 | 7016.77 | 1773.66 | 438.52 | -1763.89 | 0.00 | |
| 9425.00† | 90.345 | 268.642 | 7016.17 | 1873.55 | 436.15 | -1863.86 | 0.00 | |
| 9525.00† | 90.345 | 268.642 | 7015.57 | 1973.44 | 433.79 | -1963.83 | 0.00 | |
| 9625.00† | 90.345 | 268.642 | 7014.96 | 2073.33 | 431.42 | -2063.80 | 0.00 | |
| 9725.00† | 90.345 | 268.642 | 7014.36 | 2173.21 | 429.05 | -2163.77 | 0.00 | |
| 9825.00† | 90.345 | 268.642 | 7013.76 | 2273.10 | 426.68 | -2263.74 | 0.00 | |
| 9925.00† | 90.345 | 268.642 | 7013.16 | 2372.99 | 424.31 | -2363.71 | 0.00 | |
| 10025.00† | 90.345 | 268.642 | 7012.56 | 2472.88 | 421.94 | -2463.68 | 0.00 | |
| 10125.00† | 90.345 | 268.642 | 7011.95 | 2572.76 | 419.57 | -2563.65 | 0.00 | |
| 10225.00† | 90.345 | 268.642 | 7011.35 | 2672.65 | 417.20 | -2663.62 | 0.00 | |
| 10325.00† | 90.345 | 268.642 | 7010.75 | 2772.54 | 414.83 | -2763.59 | 0.00 | |
| 10425.00† | 90.345 | 268.642 | 7010.15 | 2872.43 | 412.46 | -2863.56 | 0.00 | |
| 10525.00† | 90.345 | 268.642 | 7009.55 | 2972.31 | 410.09 | -2963.53 | 0.00 | |
| 10625.00† | 90.345 | 268.642 | 7008.94 | 3072.20 | 407.72 | -3063.50 | 0.00 | |
| 10725.00† | 90.345 | 268.642 | 7008.34 | 3172.09 | 405.35 | -3163.47 | 0.00 | |
| 10825.00† | 90.345 | 268.642 | 7007.74 | 3271.97 | 402.98 | -3263.44 | 0.00 | |
| 10925.00† | 90.345 | 268.642 | 7007.14 | 3371.86 | 400.61 | -3363.41 | 0.00 | |
| 11025.00† | 90.345 | 268.642 | 7006.53 | 3471.75 | 398.24 | -3463.38 | 0.00 | |
| 11125.00† | 90.345 | 268.642 | 7005.93 | 3571.64 | 395.87 | -3563.35 | 0.00 | |
| 11225.00† | 90.345 | 268.642 | 7005.33 | 3671.52 | 393.50 | -3663.32 | 0.00 | |
| 11325.00† | 90.345 | 268.642 | 7004.73 | 3771.41 | 391.13 | -3763.29 | 0.00 | |
| 11425.00† | 90.345 | 268.642 | 7004.13 | 3871.30 | 388.76 | -3863.26 | 0.00 | |
| 11525.00† | 90.345 | 268.642 | 7003.52 | 3971.19 | 386.39 | -3963.23 | 0.00 | |
| 11625.00† | 90.345 | 268.642 | 7002.92 | 4071.07 | 384.02 | -4063.21 | 0.00 | |
| 11725.00† | 90.345 | 268.642 | 7002.32 | 4170.96 | 381.65 | -4163.18 | 0.00 | |
| 11825.00† | 90.345 | 268.642 | 7001.72 | 4270.85 | 379.28 | -4263.15 | 0.00 | |
| 11925.00† | 90.345 | 268.642 | 7001.12 | 4370.74 | 376.91 | -4363.12 | 0.00 | |
| 12025.00† | 90.345 | 268.642 | 7000.51 | 4470.62 | 374.54 | -4463.09 | 0.00 | |
| 12125.00† | 90.345 | 268.642 | 6999.91 | 4570.51 | 372.17 | -4563.06 | 0.00 | |
| 12225.00† | 90.345 | 268.642 | 6999.31 | 4670.40 | 369.80 | -4663.03 | 0.00 | |
| 12325.00† | 90.345 | 268.642 | 6998.71 | 4770.28 | 367.43 | -4763.00 | 0.00 | |
| 12425.00† | 90.345 | 268.642 | 6998.10 | 4870.17 | 365.06 | -4862.97 | 0.00 | |
| 12525.00† | 90.345 | 268.642 | 6997.50 | 4970.06 | 362.69 | -4962.94 | 0.00 | |
| 12625.00† | 90.345 | 268.642 | 6996.90 | 5069.95 | 360.32 | -5062.91 | 0.00 | |
| 12725.00† | 90.345 | 268.642 | 6996.30 | 5169.83 | 357.95 | -5162.88 | 0.00 | |
| 12825.00† | 90.345 | 268.642 | 6995.70 | 5269.72 | 355.58 | -5262.85 | 0.00 | |
| 12925.00† | 90.345 | 268.642 | 6995.09 | 5369.61 | 353.21 | -5362.82 | 0.00 | |

Planned Wellpath Report

DONN 30N-20B-L PWP (REV-B.0)

Page 5 of 6



REFERENCE WELLPATH IDENTIFICATION

| | | | |
|----------|--------------------------------|----------|--|
| Operator | SRC ENERGY | Slot | SLOT#14 DONN 30N-20B-L (758'FNL & 250'FEL, SEC.21) |
| Area | COLORADO | Well | DONN 30N-20B-L |
| Field | WELD COUNTY (NAD83,TRUE NORTH) | Wellbore | DONN 30N-20B-L PWB |
| Facility | SEC.21-T06N-R66W | | |

WELLPATH DATA (188 stations) † = interpolated/extrapolated station

| MD [ft] | Inclination [°] | Azimuth [°] | TVD [ft] | Vert Sect [ft] | North [ft] | East [ft] | DLS [°/100ft] | Comments |
|------------|--------------------|----------------|-------------|-------------------|---------------|--------------|------------------|----------------|
| 13025.00† | 90.345 | 268.642 | 6994.49 | 5469.50 | 350.84 | -5462.79 | 0.00 | |
| 13125.00† | 90.345 | 268.642 | 6993.89 | 5569.38 | 348.47 | -5562.76 | 0.00 | |
| 13225.00† | 90.345 | 268.642 | 6993.29 | 5669.27 | 346.10 | -5662.73 | 0.00 | |
| 13325.00† | 90.345 | 268.642 | 6992.69 | 5769.16 | 343.73 | -5762.70 | 0.00 | |
| 13425.00† | 90.345 | 268.642 | 6992.08 | 5869.05 | 341.36 | -5862.67 | 0.00 | |
| 13525.00† | 90.345 | 268.642 | 6991.48 | 5968.93 | 338.99 | -5962.64 | 0.00 | |
| 13625.00† | 90.345 | 268.642 | 6990.88 | 6068.82 | 336.62 | -6062.61 | 0.00 | |
| 13725.00† | 90.345 | 268.642 | 6990.28 | 6168.71 | 334.25 | -6162.58 | 0.00 | |
| 13825.00† | 90.345 | 268.642 | 6989.67 | 6268.60 | 331.88 | -6262.55 | 0.00 | |
| 13925.00† | 90.345 | 268.642 | 6989.07 | 6368.48 | 329.51 | -6362.52 | 0.00 | |
| 14025.00† | 90.345 | 268.642 | 6988.47 | 6468.37 | 327.14 | -6462.49 | 0.00 | |
| 14125.00† | 90.345 | 268.642 | 6987.87 | 6568.26 | 324.77 | -6562.46 | 0.00 | |
| 14225.00† | 90.345 | 268.642 | 6987.27 | 6668.14 | 322.40 | -6662.43 | 0.00 | |
| 14325.00† | 90.345 | 268.642 | 6986.66 | 6768.03 | 320.03 | -6762.40 | 0.00 | |
| 14425.00† | 90.345 | 268.642 | 6986.06 | 6867.92 | 317.66 | -6862.37 | 0.00 | |
| 14525.00† | 90.345 | 268.642 | 6985.46 | 6967.81 | 315.29 | -6962.34 | 0.00 | |
| 14625.00† | 90.345 | 268.642 | 6984.86 | 7067.69 | 312.92 | -7062.31 | 0.00 | |
| 14725.00† | 90.345 | 268.642 | 6984.26 | 7167.58 | 310.55 | -7162.28 | 0.00 | |
| 14825.00† | 90.345 | 268.642 | 6983.65 | 7267.47 | 308.18 | -7262.25 | 0.00 | |
| 14925.00† | 90.345 | 268.642 | 6983.05 | 7367.36 | 305.81 | -7362.22 | 0.00 | |
| 15025.00† | 90.345 | 268.642 | 6982.45 | 7467.24 | 303.44 | -7462.19 | 0.00 | |
| 15125.00† | 90.345 | 268.642 | 6981.85 | 7567.13 | 301.07 | -7562.16 | 0.00 | |
| 15225.00† | 90.345 | 268.642 | 6981.24 | 7667.02 | 298.70 | -7662.13 | 0.00 | |
| 15325.00† | 90.345 | 268.642 | 6980.64 | 7766.91 | 296.33 | -7762.10 | 0.00 | |
| 15425.00† | 90.345 | 268.642 | 6980.04 | 7866.79 | 293.96 | -7862.07 | 0.00 | |
| 15525.00† | 90.345 | 268.642 | 6979.44 | 7966.68 | 291.59 | -7962.04 | 0.00 | |
| 15625.00† | 90.345 | 268.642 | 6978.84 | 8066.57 | 289.22 | -8062.01 | 0.00 | |
| 15725.00† | 90.345 | 268.642 | 6978.23 | 8166.45 | 286.85 | -8161.98 | 0.00 | |
| 15825.00† | 90.345 | 268.642 | 6977.63 | 8266.34 | 284.48 | -8261.95 | 0.00 | |
| 15925.00† | 90.345 | 268.642 | 6977.03 | 8366.23 | 282.11 | -8361.92 | 0.00 | |
| 16025.00† | 90.345 | 268.642 | 6976.43 | 8466.12 | 279.74 | -8461.89 | 0.00 | |
| 16125.00† | 90.345 | 268.642 | 6975.83 | 8566.00 | 277.37 | -8561.86 | 0.00 | |
| 16225.00† | 90.345 | 268.642 | 6975.22 | 8665.89 | 275.00 | -8661.83 | 0.00 | |
| 16325.00† | 90.345 | 268.642 | 6974.62 | 8765.78 | 272.63 | -8761.80 | 0.00 | |
| 16425.00† | 90.345 | 268.642 | 6974.02 | 8865.67 | 270.26 | -8861.77 | 0.00 | |
| 16525.00† | 90.345 | 268.642 | 6973.42 | 8965.55 | 267.89 | -8961.74 | 0.00 | |
| 16625.00† | 90.345 | 268.642 | 6972.82 | 9065.44 | 265.52 | -9061.71 | 0.00 | |
| 16725.00† | 90.345 | 268.642 | 6972.21 | 9165.33 | 263.15 | -9161.68 | 0.00 | |
| 16825.00† | 90.345 | 268.642 | 6971.61 | 9265.22 | 260.78 | -9261.65 | 0.00 | |
| 16835.12 | 90.345 | 268.642 | 6971.55 | 9275.33 | 260.54 | -9271.77 | 0.00 | End of Tangent |
| 16923.19 | 90.345 | 266.000 | 6971.02 | 9363.17 | 256.43 | -9359.73 | 3.00 | End of 3D Arc |
| 16925.00† | 90.345 | 266.000 | 6971.01 | 9364.97 | 256.30 | -9361.54 | 0.00 | |
| 17025.00† | 90.345 | 266.000 | 6970.41 | 9464.53 | 249.33 | -9461.29 | 0.00 | |
| 17073.19 | 90.345 | 266.000 | 6970.12 | 9512.51 | 245.96 | -9509.36 | 0.00 | End of Tangent |
| 17125.00† | 90.344 | 267.554 | 6969.80 | 9564.16 | 243.05 | -9561.09 | 3.00 | |

Planned Wellpath Report

DONN 30N-20B-L PWP (REV-B.0)

Page 6 of 6



REFERENCE WELLPATH IDENTIFICATION

| | | | |
|----------|--------------------------------|----------|--|
| Operator | SRC ENERGY | Slot | SLOT#14 DONN 30N-20B-L (758'FNL & 250'FEL, SEC.21) |
| Area | COLORADO | Well | DONN 30N-20B-L |
| Field | WELD COUNTY (NAD83,TRUE NORTH) | Wellbore | DONN 30N-20B-L PWB |
| Facility | SEC.21-T06N-R66W | | |

WELLPATH DATA (188 stations) † = interpolated/extrapolated station

| MD [ft] | Inclination [°] | Azimuth [°] | TVD [ft] | Vert Sect [ft] | North [ft] | East [ft] | DLS [°/100ft] | Comments |
|-----------|-----------------|-------------|----------------------|----------------|------------|-----------|---------------|----------------|
| 17197.13 | 90.341 | 269.718 | 6969.37 | 9636.20 | 241.33 | -9633.19 | 3.00 | End of 3D Arc |
| 17225.00† | 90.341 | 269.718 | 6969.21 | 9664.06 | 241.20 | -9661.06 | 0.00 | |
| 17325.00† | 90.341 | 269.718 | 6968.61 | 9764.02 | 240.71 | -9761.06 | 0.00 | |
| 17425.00† | 90.341 | 269.718 | 6968.02 | 9863.98 | 240.21 | -9861.06 | 0.00 | |
| 17525.00† | 90.341 | 269.718 | 6967.42 | 9963.94 | 239.72 | -9961.05 | 0.00 | |
| 17625.00† | 90.341 | 269.718 | 6966.82 | 10063.89 | 239.23 | -10061.05 | 0.00 | |
| 17725.00† | 90.341 | 269.718 | 6966.23 | 10163.85 | 238.74 | -10161.05 | 0.00 | |
| 17763.35 | 90.341 | 269.718 | 6966.00 ² | 10202.19 | 238.55 | -10199.40 | 0.00 | End of Tangent |

HOLE & CASING SECTIONS

- Ref Wellbore: DONN 30N-20B-L PWB Ref Wellpath: DONN 30N-20B-L PWP (REV-B.0)

| String/Diameter | Start MD [ft] | End MD [ft] | Interval [ft] | Start TVD [ft] | End TVD [ft] | Start N/S [ft] | Start E/W [ft] | End N/S [ft] | End E/W [ft] |
|------------------------|---------------|-------------|---------------|----------------|--------------|----------------|----------------|--------------|--------------|
| 13.5in Open Hole | 25.00 | 1750.00 | 1725.00 | 25.00 | 1737.35 | 0.00 | 0.00 | 94.00 | 155.71 |
| 9.625in Casing Surface | 25.00 | 1750.00 | 1725.00 | 25.00 | 1737.35 | 0.00 | 0.00 | 94.00 | 155.71 |
| 8.5in Open Hole | 1750.00 | 17763.35 | 16013.35 | 1737.35 | 6966.00 | 94.00 | 155.71 | 238.55 | -10199.40 |

TARGETS

| Name | MD [ft] | TVD [ft] | North [ft] | East [ft] | Grid East [US ft] | Grid North [US ft] | Latitude | Longitude | Shape |
|---|----------|----------|------------|-----------|-------------------|--------------------|----------------|-----------------|---------|
| SEC.20-T06N-R66W | | 0.00 | 20.04 | 0.00 | 3201887.93 | 1418212.16 | 40°28'44.854"N | 104°46'27.336"W | polygon |
| SEC.21-T06N-R66W | | 40.00 | -3862.77 | -6166.64 | 3195753.51 | 1414279.17 | 40°28'06.478"N | 104°47'47.123"W | polygon |
| 2) DONN 30N-20B-L BHL ON PLAT (328'FNL & 150'FWL, SEC.20) | 17763.35 | 6966.00 | 238.55 | -10199.40 | 3191687.47 | 1418347.19 | 40°28'46.992"N | 104°48'39.323"W | circle |
| 1) DONN 30N-20B-L TOP OF PROD ON PLAT (278'FNL & 150'FEL, SEC.21) | 7460.12 | 7028.00 | 482.72 | 100.43 | 3201984.57 | 1418675.64 | 40°28'49.426"N | 104°46'26.036"W | circle |

SURVEY PROGRAM -

Ref Wellbore: DONN 30N-20B-L PWB Ref Wellpath: DONN 30N-20B-L PWP (REV-B.0)

| Start MD [ft] | End MD [ft] | Positional Uncertainty Model | Log Name/Comment | Wellbore |
|---------------|-------------|---|------------------|--------------------|
| 25.00 | 1750.00 | Custom BHI NaviTrak (Standard Rotating+Axial Corr) (Rockies 0.03Gt model) | | DONN 30N-20B-L PWB |
| 1750.00 | 17763.35 | Custom BHI AutoTrak Curve (IFR1, Short) (Rockies 0.03Gt model) | | DONN 30N-20B-L PWB |