

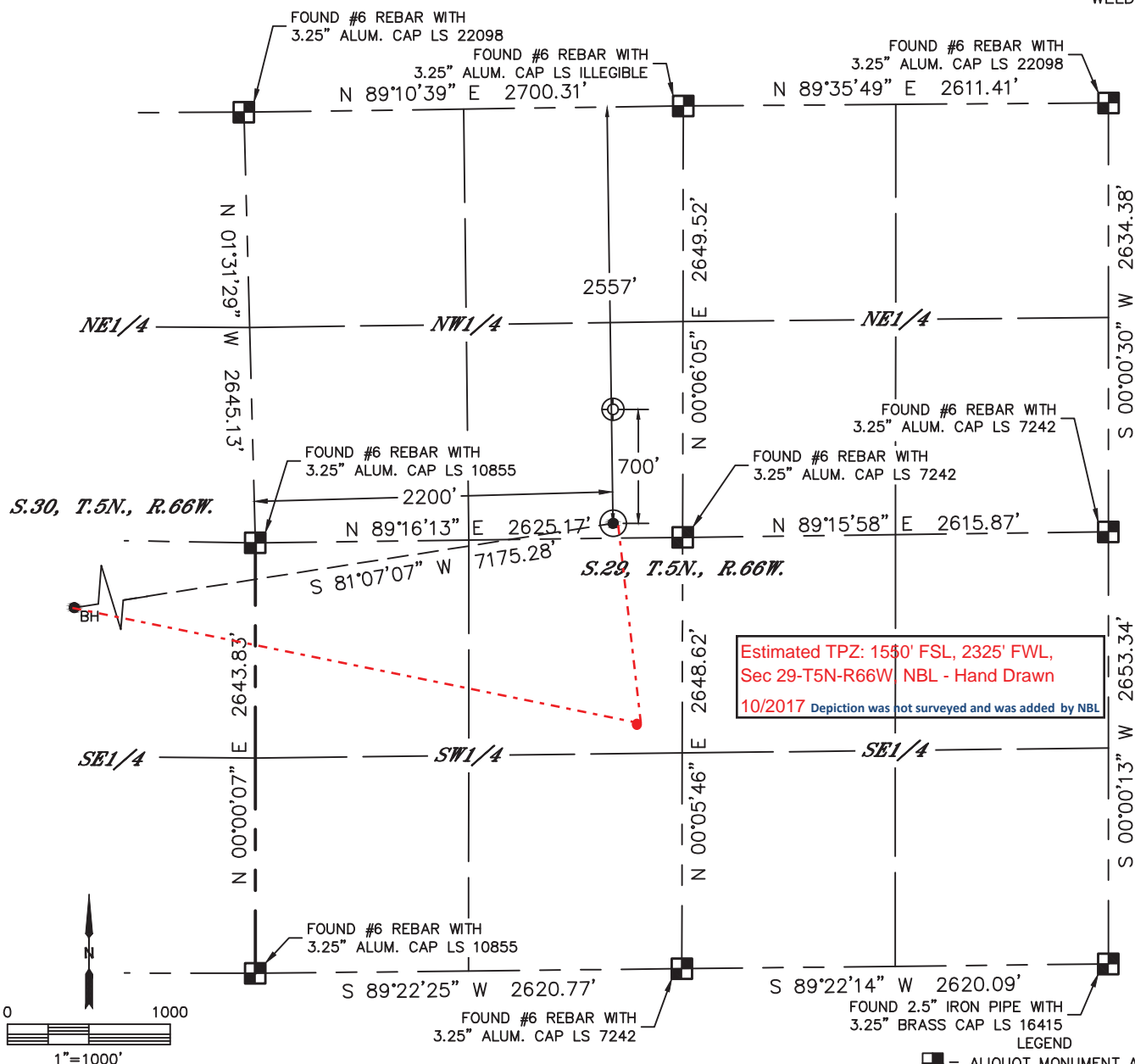


Lat40°, Inc. 6250 W. 10th Street, Unit 2, Greeley, CO 970-515-5294

WELL LOCATION CERTIFICATE

SANFORD J30-635

SECTION: 29
TOWNSHIP: 5N
RANGE: 66W
6TH. P.M.
WELD COUNTY, CO



CLIENT: NOBLE ENERGY, INC.				LANDMAN: NICK HAFFNER		
INSTRUMENT OPERATOR: BRIAN ROTTINGHAUS				SURVEY DATE: 11/18/2016		SURFACE USE: CROP LAND
SHL FOOTAGE	SHL LAT°	SHL LONG°	SHL PDOP	SHL ELEV (FT.)	SHL 1/4/1/4	SHL S-T-R
2557	FNL	2200	FWL	40.37073	-104.80495	1.3 4901 SENW 29-5-66

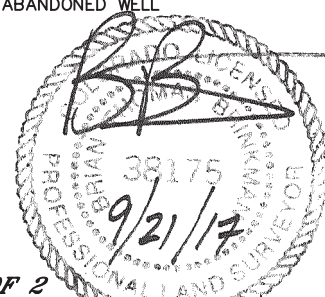
BHL FOOTAGE				BHL LAT °	BHL LONG °	BHL S-T-R
1650	FSL	460	FWL	40.36784	-104.83041	30-5-66

NEAREST EXISTING WELL IN SHL 1/4/1/4	
EXISTING KAMMERZELL 29-6H6	±700' N
NEAREST CULTURAL ITEMS	
BUILDING	±1775' SW
BUILDING UNIT	±1797' SE
HIGH OCCUPANCY BUILDING UNIT	5280' ±
DESIGNATED OUTSIDE ACTIVITY AREA	5280' ±
PUBLIC ROAD (TWO RIVERS PARKWAY)	±412' E
ABOVE GROUND UTILITY	±393' E
RAILROAD	5280' ±
PROPERTY LINE	±428' E

NOTE:

- 1) Bearings shown are Grid Bearings of the Colorado State Plane Coordinate System, North Zone, North American Datum 1983. The lineal dimensions as contained herein are based upon the "U.S. Survey Foot."
- 2) Distances to section lines measured at 90 degrees from said section lines.
- 3) Ground elevations are based on an observed GPS elevation (NAVD 1988 DATUM).
- 4) Latitude and Longitude shown are (NAD 83 DATUM).
- 5) IMPROVEMENTS: See LOCATION DRAWING for all visible improvements within 500' of oil and gas location.
- 6) This map does not represent a boundary survey.

- = ALIQUOT MONUMENT AS DESCRIBED
○ = CALCULATED POSITION
⊙ = SURFACE HOLE LOCATION (SHL)
▲ = ENTRY POINT LOCATION (EP)
● = BOTTOM HOLE LOCATION (BHL)
⊕ = EXISTING WELL
⊗ = ABANDONED WELL



SHEET 1 OF 2

Brian T. Brinkman—On behalf of Lat40°, Inc.
Colorado Licensed Professional Land Surveyor No. 38175
DATE: 9/21/2017
PROJECT#: 2016030

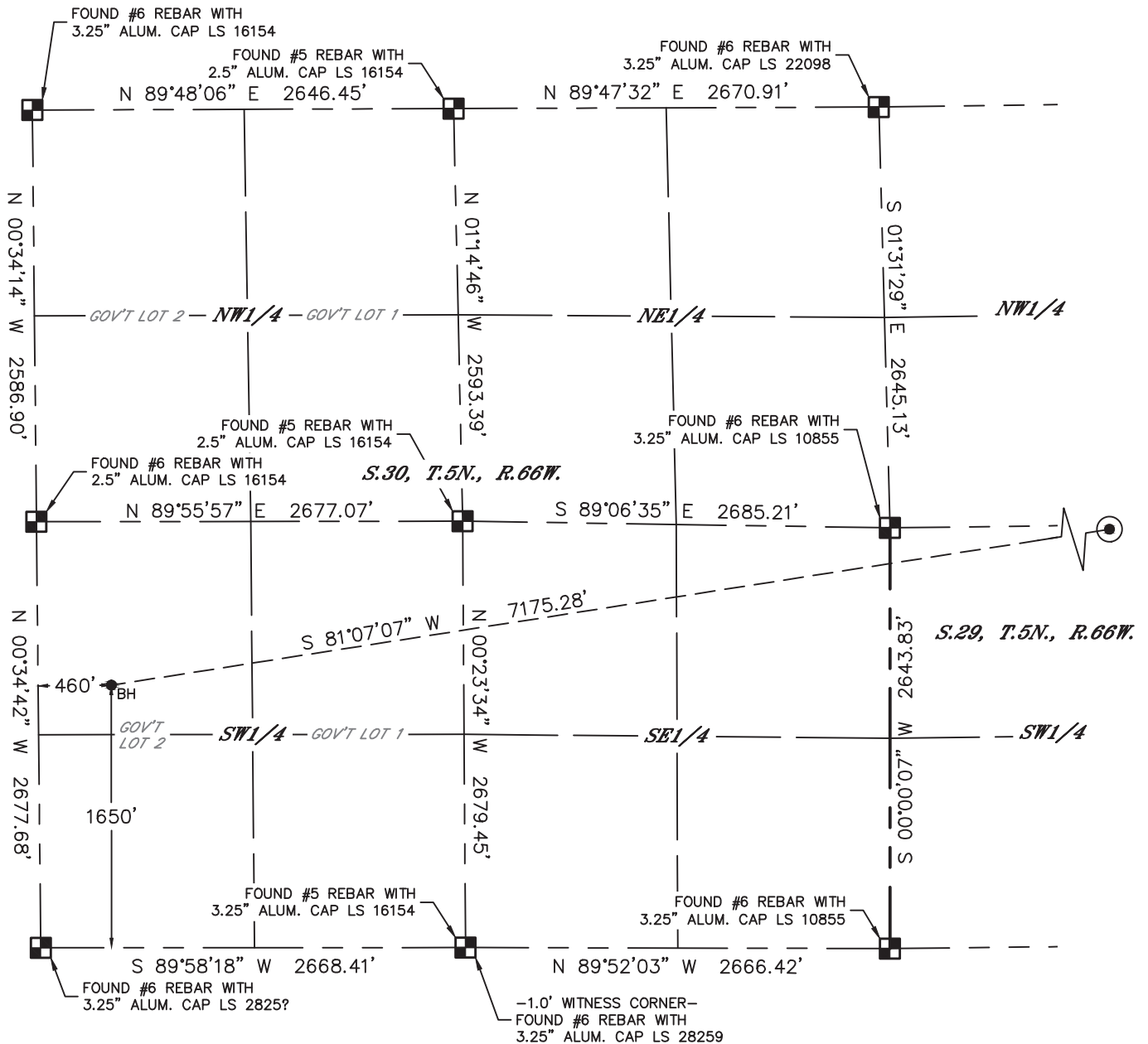


Lat40°, Inc. 6250 W. 10th Street, Unit 2, Greeley, CO 970-515-5294

WELL LOCATION CERTIFICATE

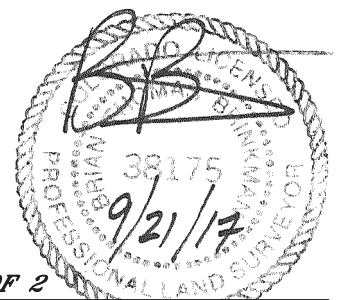
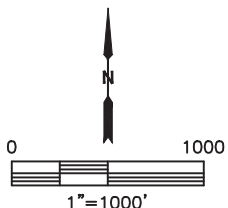
SANFORD J30-635

SECTION: 29
TOWNSHIP: 5N
RANGE: 66W
6TH. P.M.
WELD COUNTY, CO



LEGEND

- = ALIQUOT MONUMENT AS DESCRIBED
- = CALCULATED POSITION
- = SURFACE HOLE LOCATION (SHL)
- ▲ = ENTRY POINT LOCATION (EP)
- _{BH} = BOTTOM HOLE LOCATION (BHL)
- ⊙ = EXISTING WELL
- ⊙ = ABANDONED WELL



SHEET 2 OF 2

Brian T. Brinkman—On behalf of Lat40°, Inc.
Colorado Licensed Professional Land Surveyor No. 38175
DATE: 9/21/2017
PROJECT#: 2016030