

OPERATOR: **Extraction Oil & Gas**
 WELL NAME: **Johnsons Corner 13-N ST1**
 FIELD NAME: DJ Basin - Wattenberg
 DRILLING RIG: Cyclone 37
 API #: 05-069-06464

LAT/LONG: 40.356938, -104.973418
 SURFACE HOLE: SWNE S35-T5N-R68W, 2444' FNL, 2458' FEL
 BOTTOM HOLE: S33-T5N-R66W, 2613' FNL, 2193' FEL



Earth Science Agency, LLC

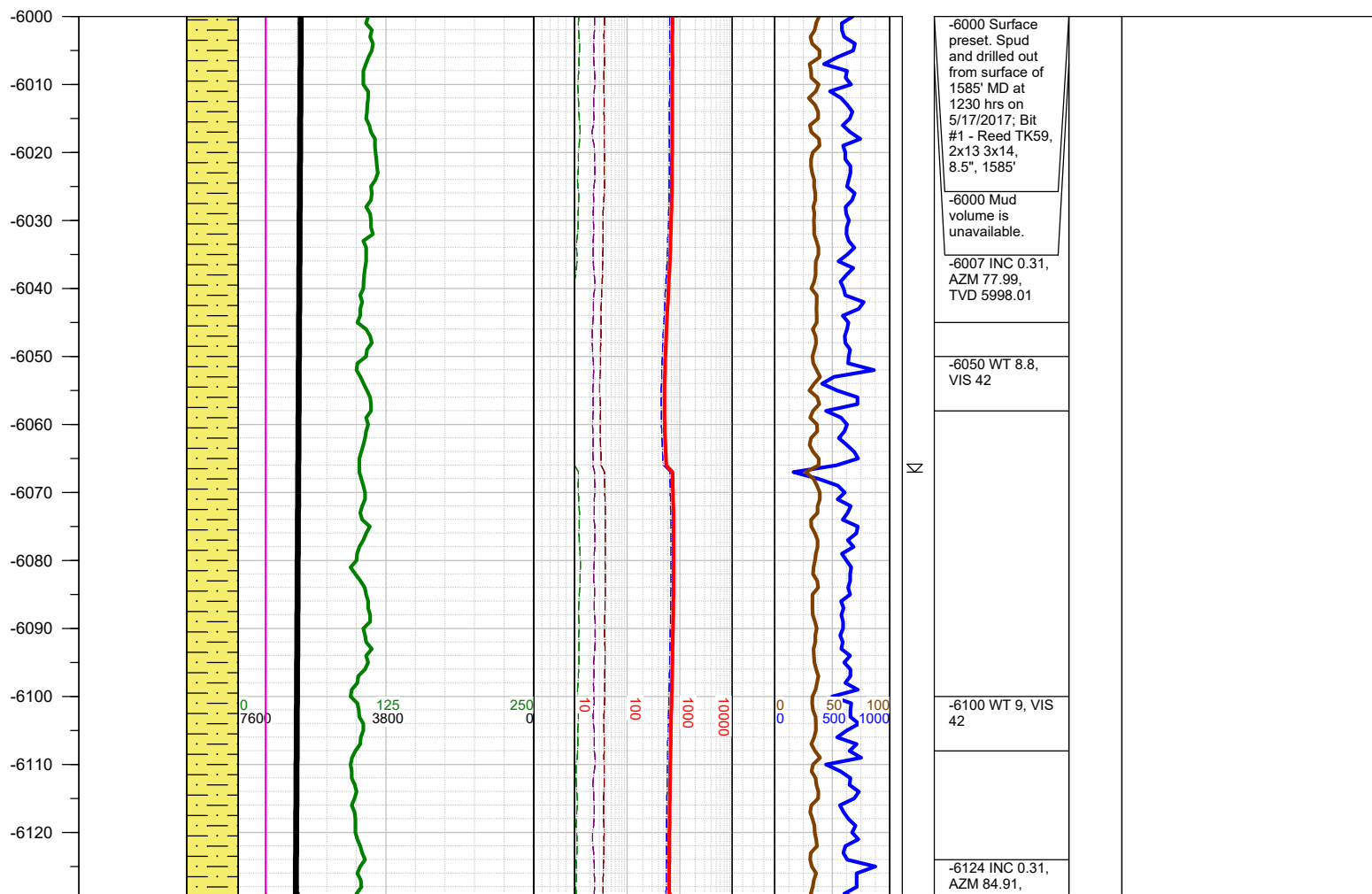
COUNTY: Larimer
 STATE: Colorado
 GROUND ELEVATION: 5009'
 KELLY BUSHING: 5037'
 DRILLING FLUID: OBM
 TVD VS. MD: 6912' / 16780'
 SPUD DATE: May 17, 2017
 TD DATE: May 21, 2017
 DEPTHS LOGGED: 6000' - 16780'
 DATES LOGGED: May 17, 2017 - May 21, 2017
 GEOLOGISTS: Ryan Gall, Tracy Lawson
 SCALE: 5" = 100'

LEGEND

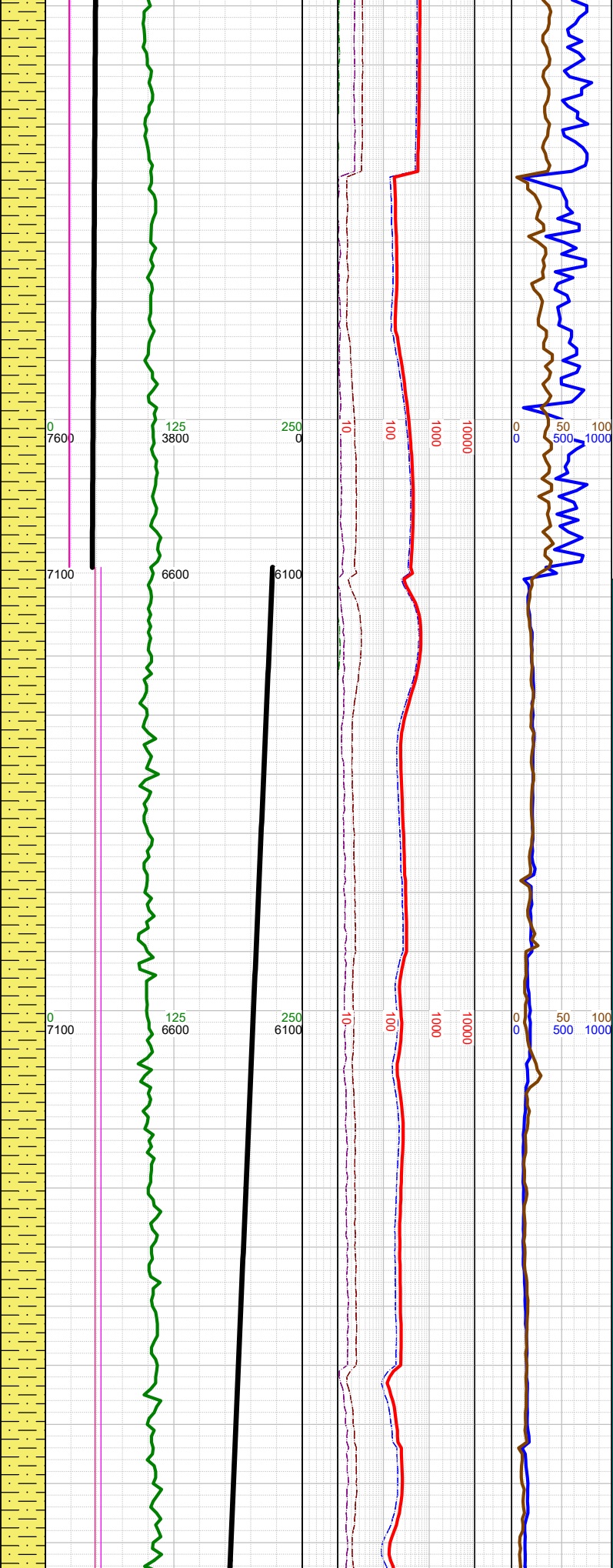
	CHALK		SHALE
	LIMESTONE		SILTY SHALE
	SHALY LIMESTONE		SHALY SILTSTONE
	MARLSTONE		SHALY SANDSTONE
	CALCAREOUS SHALE		SANDSTONE
	DOLOMITE		ANHYDRITE

FORMATION CONNECTION MIDNIGHT NEW BIT GAS SHOW FAULT

MEASURED DEPTH (FT)	PHOTOS	MUDLOGGER INTERP	GEOSTEERING INTERP		F & B	OIL SHOWS	GAS	MUD VOL. 800 bbl	ROF ft/hr 1000	SLIDES SYMBOLS	COMMENTS	CUTTINGS %	SAMPLE DESCRIPTION
			Target Top / Base										
			TVD ft	0			Total	0					
			GAMMA api	250			C1	0					
							C2	0					
							C3	0					
							C4	0					



-6130
-6140
-6150
-6160
-6170
-6180
-6190
-6200
-6210
-6220
-6230
-6240
-6250
-6260
-6270
-6280
-6290
-6300
-6310
-6320
-6330
-6340
-6350
-6360
-6370
-6380
-6390



Σ

Σ

Σ

Σ

TVD 6115

-6157 TOOH for agitator at 0215 hours on 5/18/2017. Resumed drilling at 0430 hours on 5/18/2017.

-6200 WT 8.8, VIS 43

-6219 INC 0.49, AZM 202.62, TVD 6210

-6225 Reached KOP of 6225' MD, 6216' TVD at 0450 hrs on 5/18/2017 and immediately began drilling the curve.

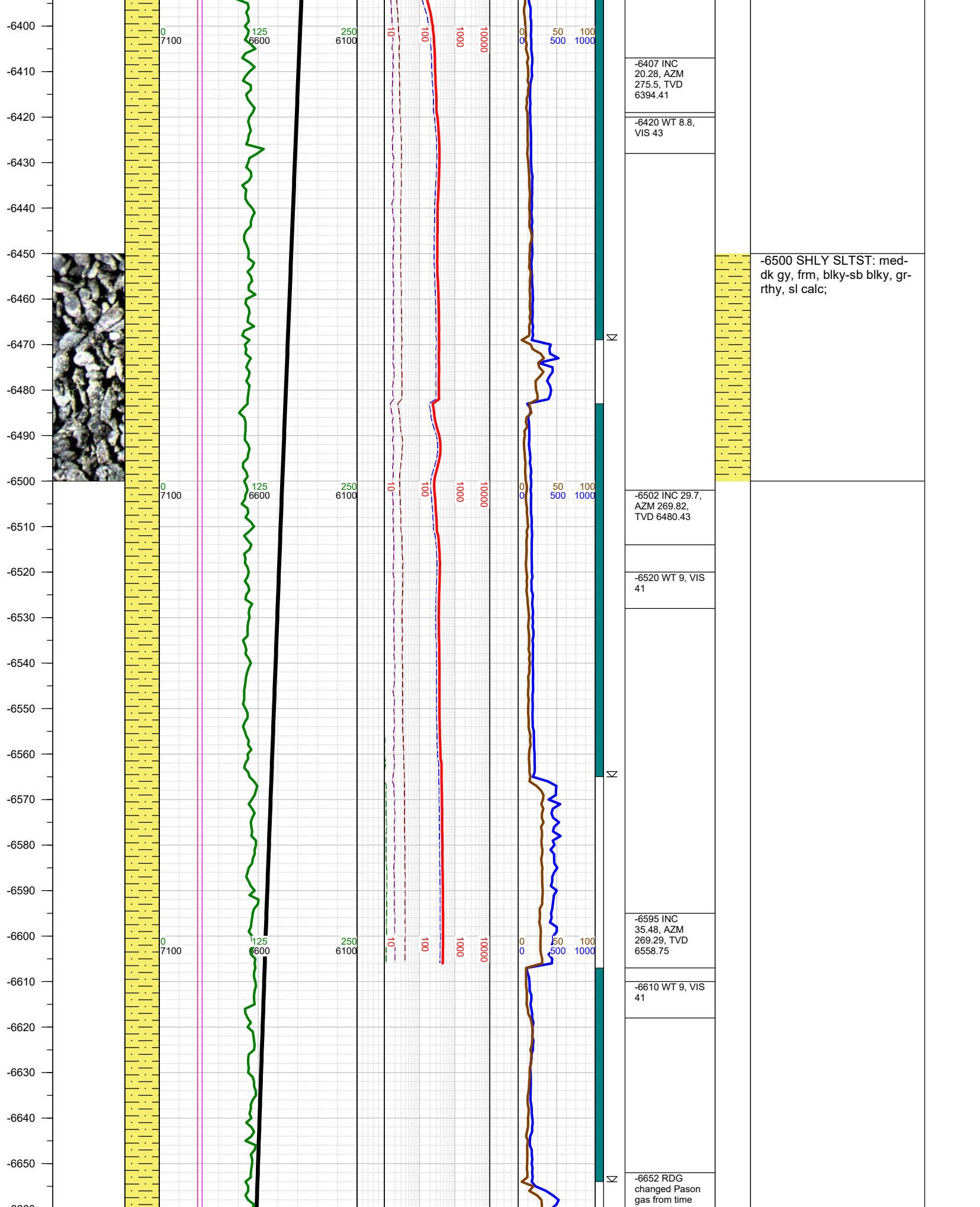
-6225 Change TVD Scale

-6300 WT 8.8, VIS 43

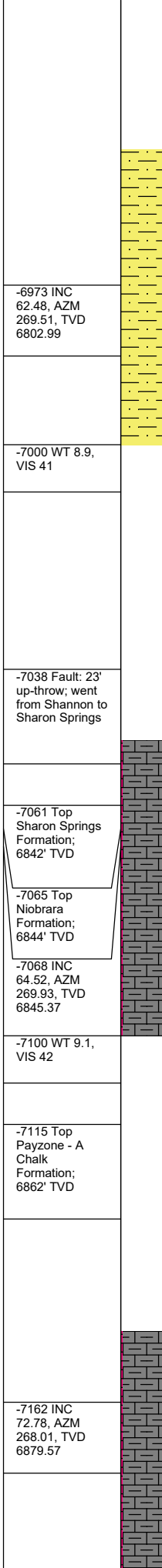
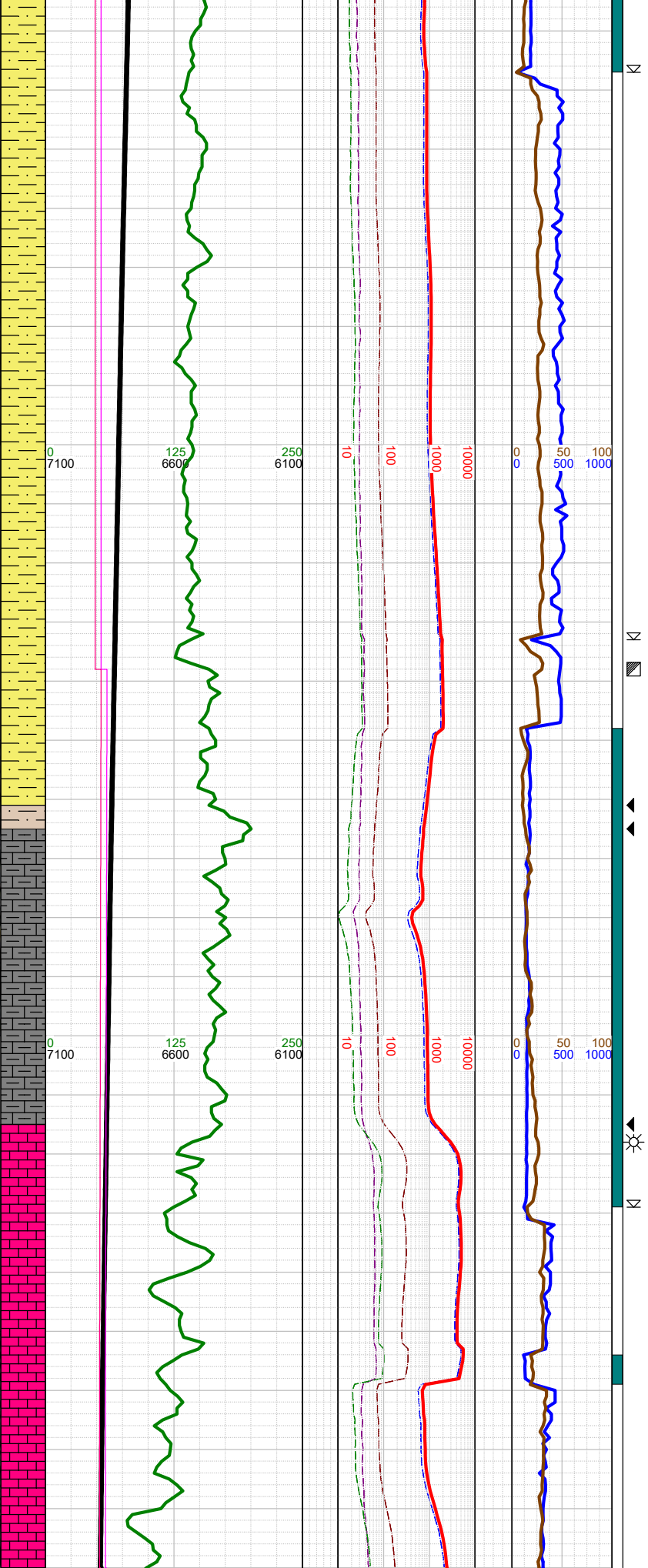
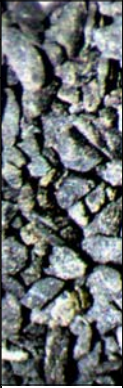
-6313 INC 9.01, AZM 275.59, TVD 6303.61



-6250 SHLY SLTST: med-dk gy, frm, blk-y-sb blk-y, gr-rthy, sl calc; SHLY SS: lt-med gy, fri, f gr, sbrnd-sbang, w srt, sl calc cmt;



-6930
-6940
-6950
-6960
-6970
-6980
-6990
-7000
-7010
-7020
-7030
-7040
-7050
-7060
-7070
-7080
-7090
-7100
-7110
-7120
-7130
-7140
-7150
-7160
-7170
-7180
7190



-7000 SHLY SLTST: med-dk gy, frm, blk-sb blk, gr-rthy, sl calc; SHLY SS: lt-med gy, fri, f gr, sbrnd-sbang, w srt, sl calc cmt; tr bent;

-6973 INC
62.48, AZM
269.51, TVD
6802.99

-7000 WT 8.9,
VIS 41

-7038 Fault: 23'
up-throw; went
from Shannon to
Sharon Springs

-7061 Top
Sharon Springs
Formation;
6842' TVD

-7065 Top
Niobrara
Formation;
6844' TVD

-7068 INC
64.52, AZM
269.93, TVD
6845.37

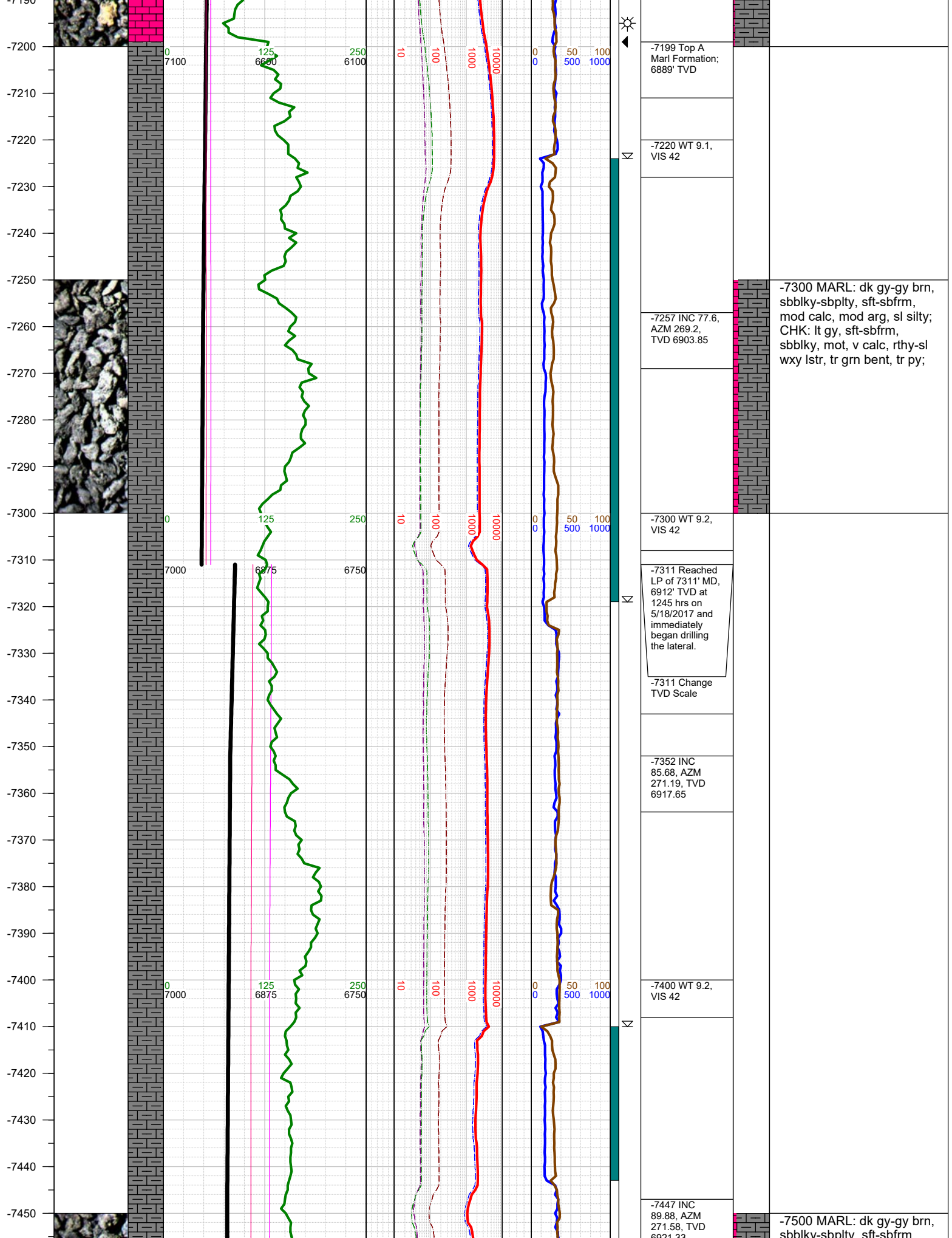
-7100 WT 9.1,
VIS 42

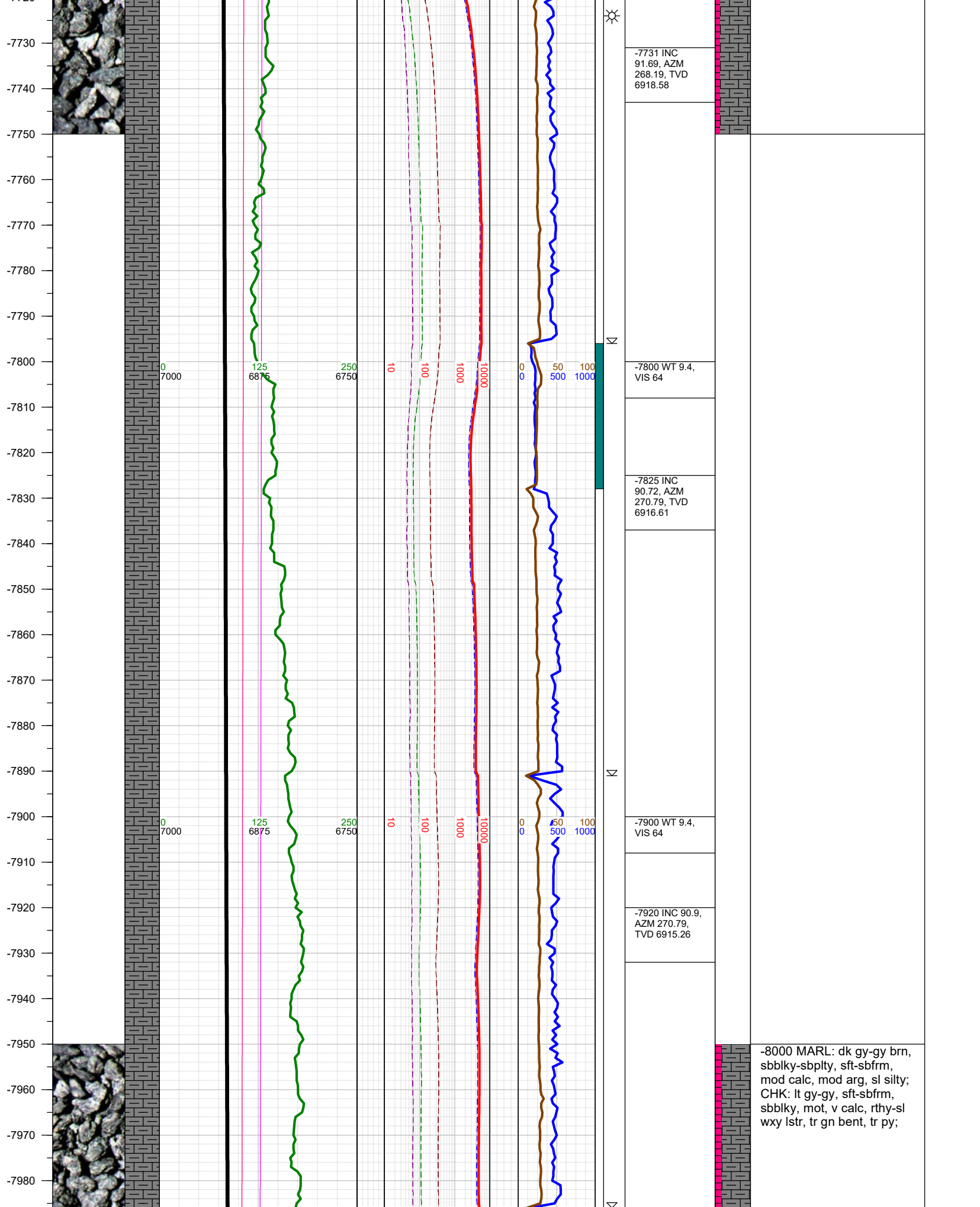
-7115 Top
Payzone - A
Chalk
Formation;
6862' TVD

-7100 MARL: dk gy-gy brn, sbbkly-sbplty, sft-sbfrm, mod calc, mod arg, sl silty; CHK: lt gy, sft-sbfrm, sbbkly, mot, v calc, rthy-sl wxy lstr, mod yel bent;

-7200 MARL: dk gy-gy brn, sbbkly-sbplty, sft-sbfrm, mod calc, mod arg, sl silty; CHK: lt gy, sft-sbfrm, sbbkly, mot, v calc, rthy-sl wxy lstr, tr grn bent, tr py;

-7162 INC
72.78, AZM
268.01, TVD
6879.57





-7730
-7740
-7750
-7760
-7770
-7780
-7790
-7800
-7810
-7820
-7830
-7840
-7850
-7860
-7870
-7880
-7890
-7900
-7910
-7920
-7930
-7940
-7950
-7960
-7970
-7980



0 7000
125 6875
250 6750
10
100
1000
10000
0 0
50 500
100 1000

-7731 INC
91.69, AZM
268.19, TVD
6918.58

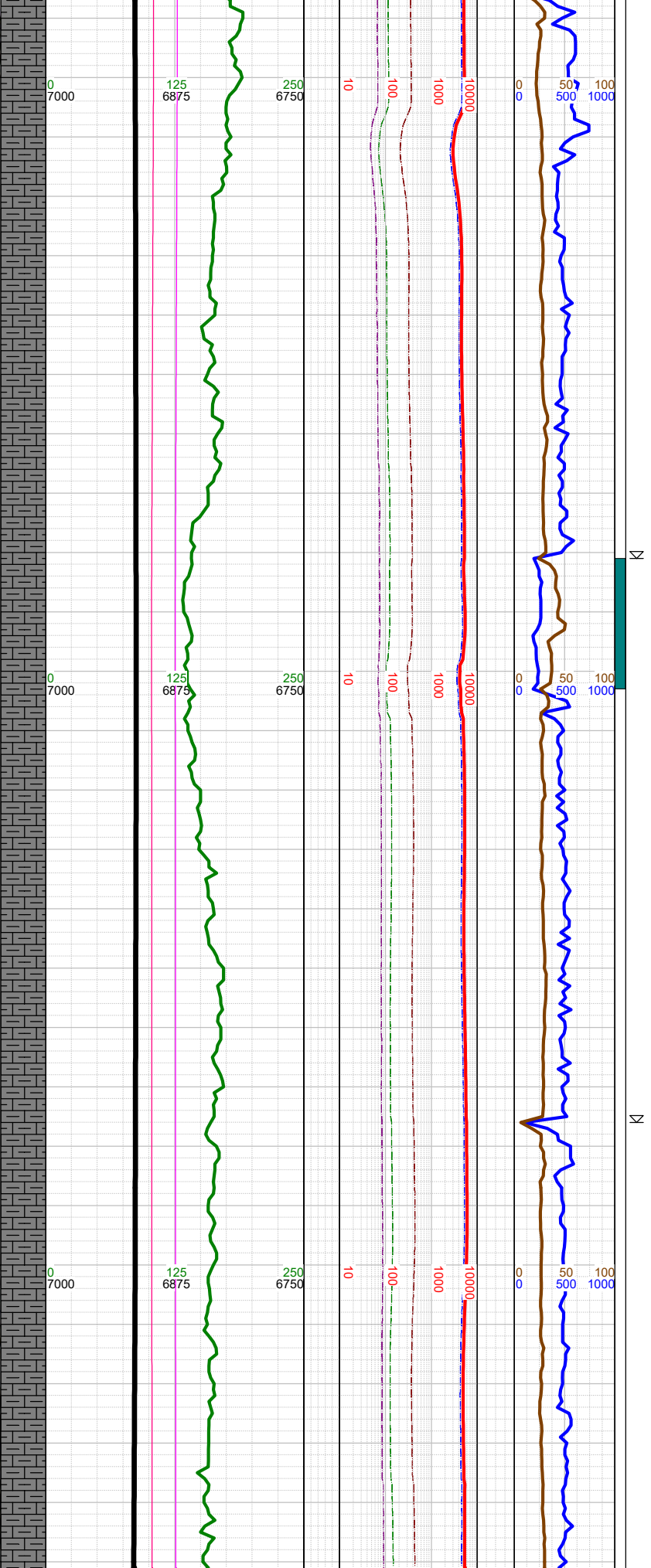
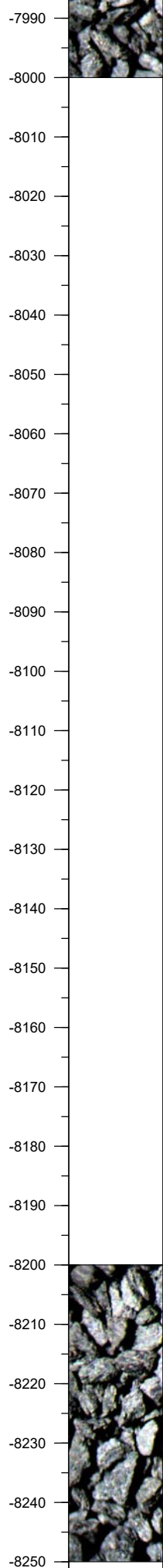
-7800 WT 9.4,
VIS 64

-7825 INC
90.72, AZM
270.79, TVD
6916.61

-7900 WT 9.4,
VIS 64

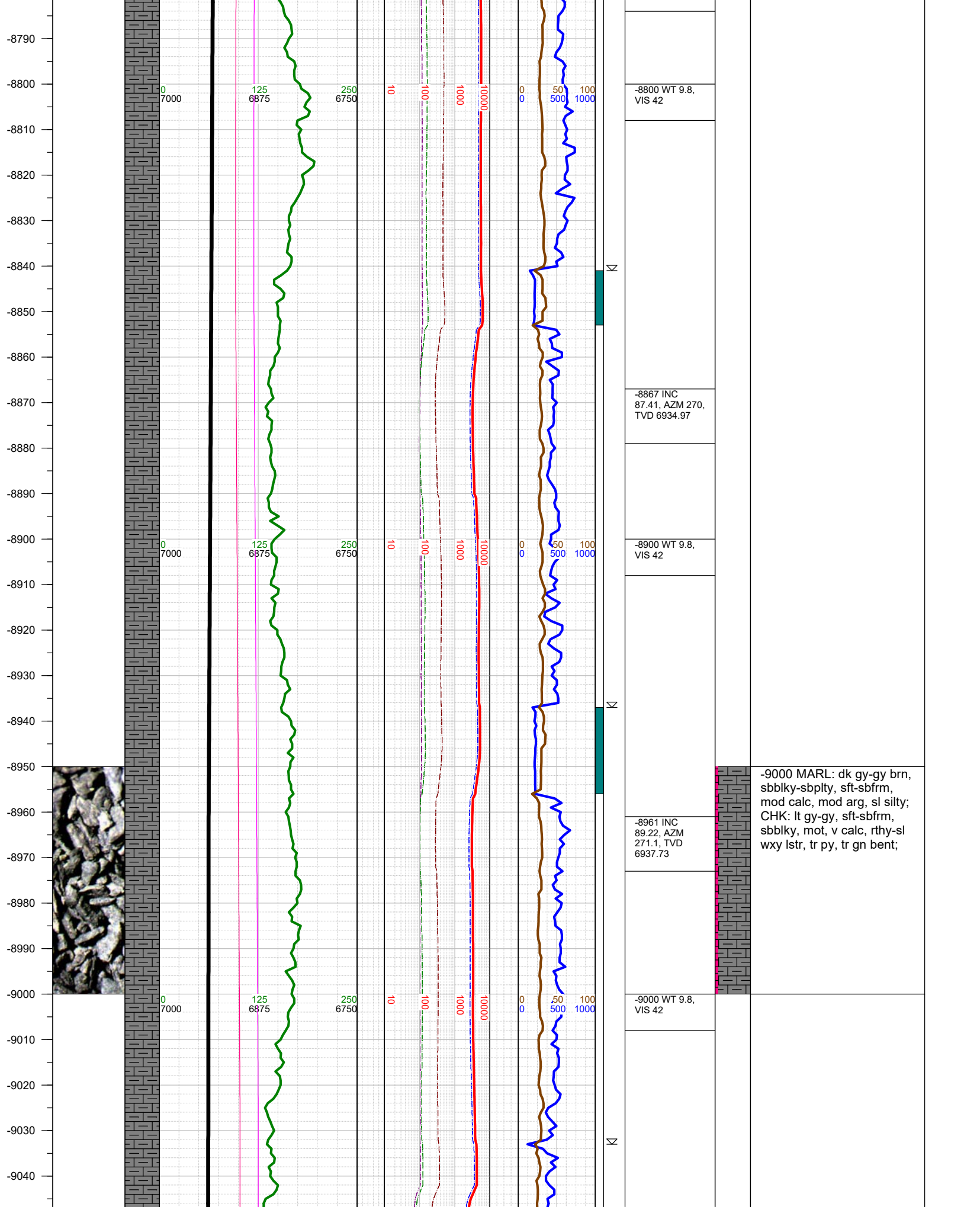
-7920 INC 90.9,
AZM 270.79,
TVD 6915.26

-8000 MARL: dk gy-gy brn,
sbbiky-sbply, sft-sbfrm,
mod calc, mod arg, sl silty;
CHK: lt gy-gy, sft-sbfrm,
sbbiky, mot, v calc, rthy-sl
wxy lstr, tr gn bent, tr py;

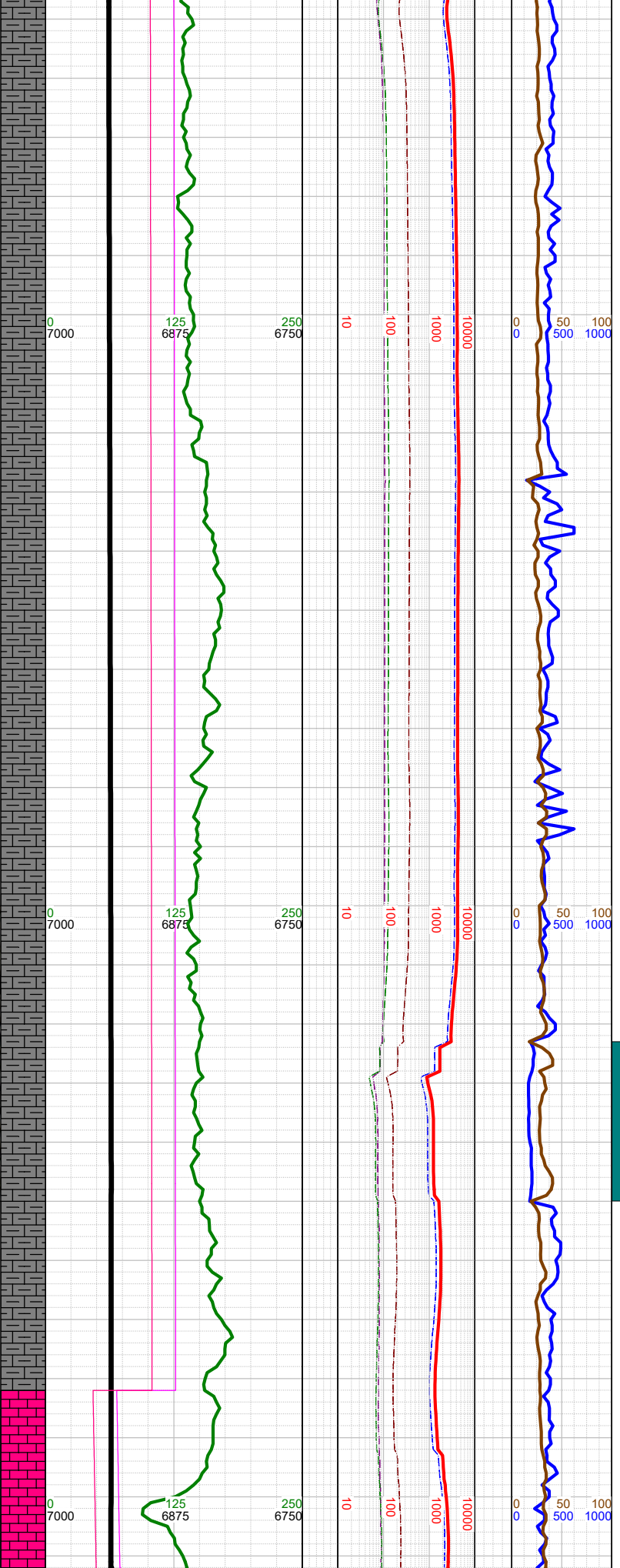


-8000 WT 9.4, VIS 64
-8015 INC 91.69, AZM 270.3, TVD 6913.12
-8100 WT 9.4, VIS 64
-8109 INC 89.22, AZM 270.48, TVD 6912.37
-8204 INC 89.4, AZM 269.91, TVD 6913.52
-8220 WT 9.4, VIS 64

-8250 MARL: dk gy-gy brn, sbbly-sbply, sft-sbfrm, mod calc, mod arg, sl silty; CHK: lt - gygy, sft-sbfrm, sbbly, mot, v calc, rthy-sl wxy lstr, tr gn bent, tr py;



-9050
-9060
-9070
-9080
-9090
-9100
-9110
-9120
-9130
-9140
-9150
-9160
-9170
-9180
-9190
-9200
-9210
-9220
-9230
-9240
-9250
-9260
-9270
-9280
-9290
-9300
-9310



-9056 INC
90.01, AZM
271.41, TVD
6938.37

-9100 WT 9.8,
VIS 42

-9150 INC
91.52, AZM
271.71, TVD
6937.12

-9200 WT 9.8,
VIS 42

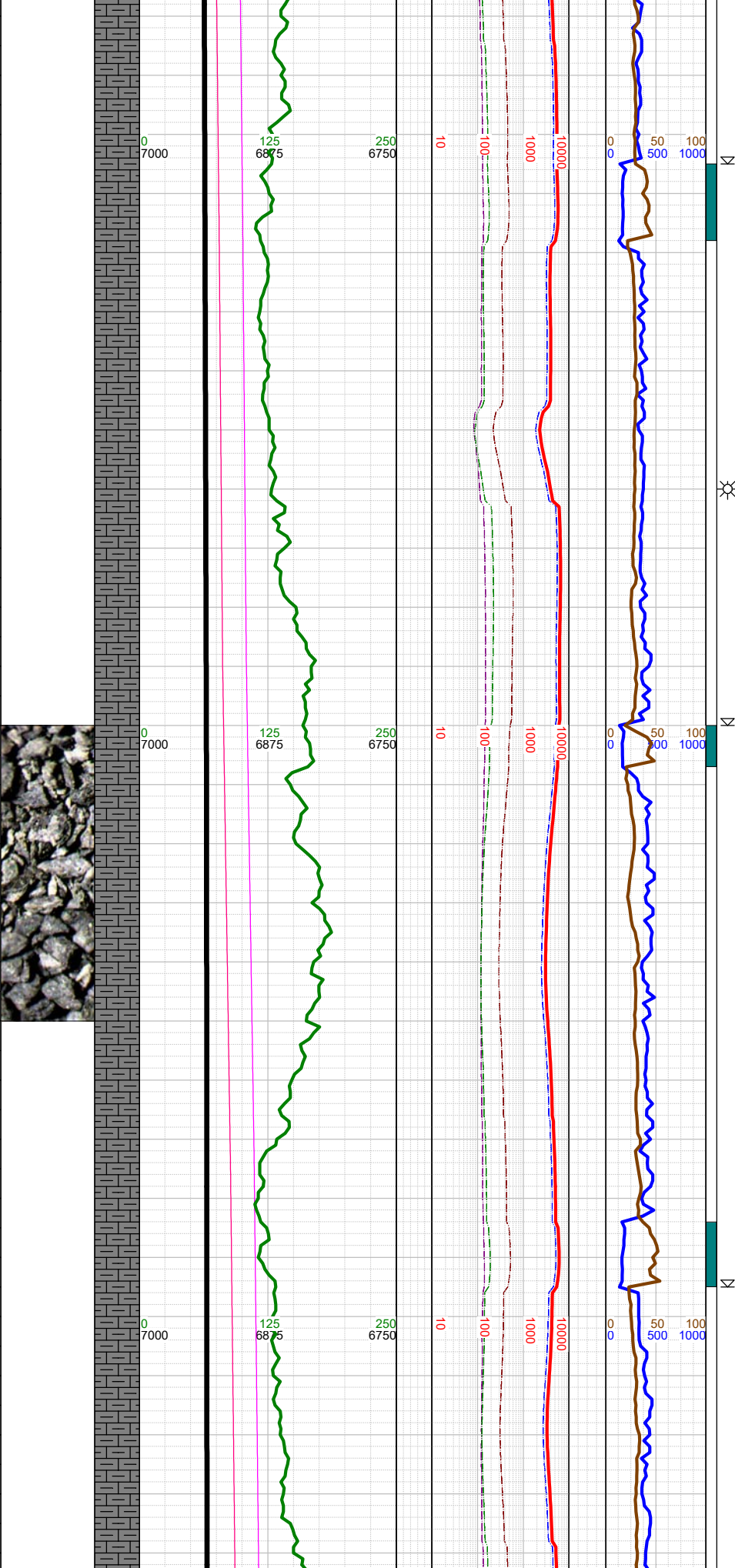
-9245 INC
89.79, AZM
271.01, TVD
6936.03

-9282 Fault: 57'
down-throw;
went from A
Marl to A Chalk

-9300 WT 10,
VIS 42

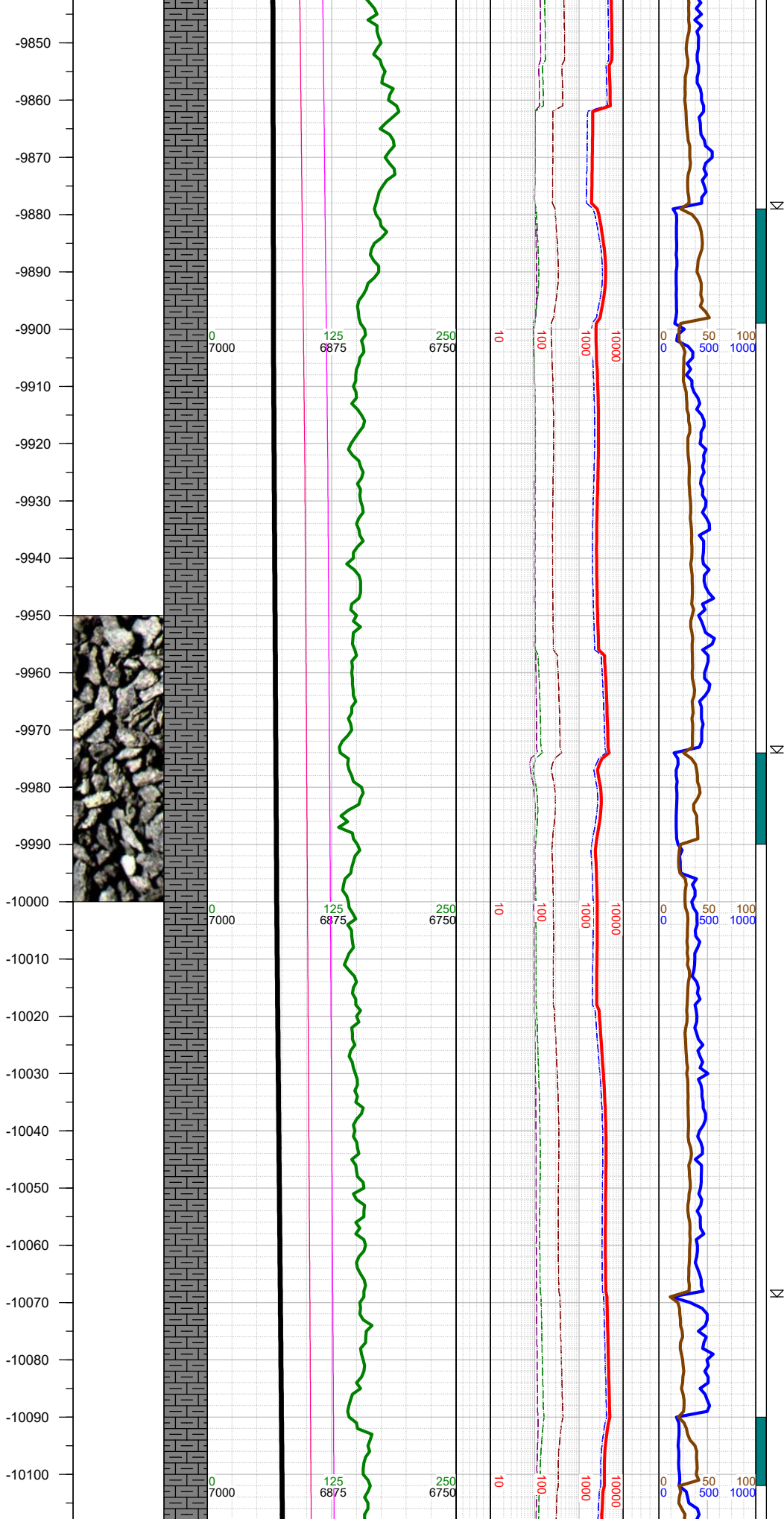
-9250 MARL: dk gy-gy brn,
sbbiky-sbply, sft-sbfrm,
mod calc, mod arg, sl silty;
CHK: lt gy-gy, sft-sbfrm,
sbbiky, mot, v calc, rthy-sl
wxy lstr, tr gn bent, tr py;

-9580
-9590
-9600
-9610
-9620
-9630
-9640
-9650
-9660
-9670
-9680
-9690
-9700
-9710
-9720
-9730
-9740
-9750
-9760
-9770
-9780
-9790
-9800
-9810
-9820
-9830
-9840



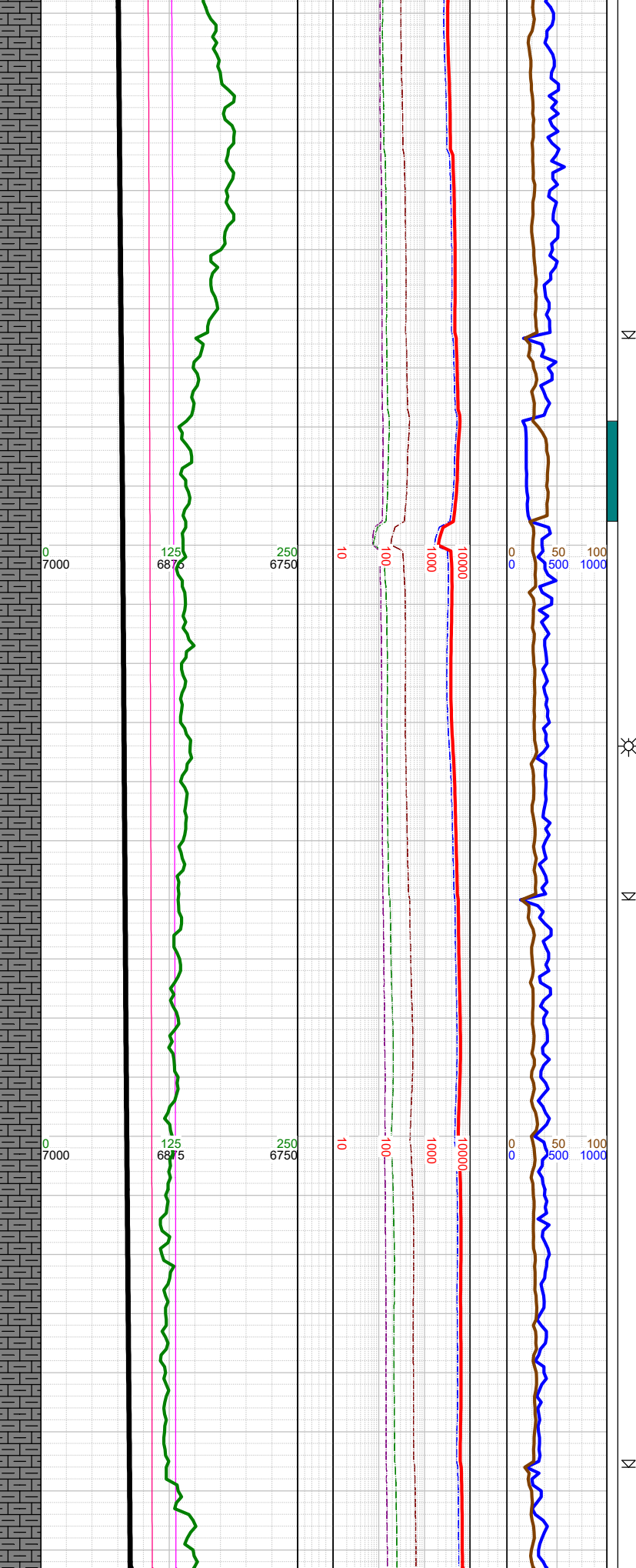
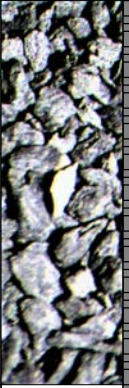
-9600 WT 10.2, VIS 41
-9622 INC 91.69, AZM 271.32, TVD 6936.14
-9700 WT 10.2, VIS 41
-9717 INC 90.1, AZM 270.79, TVD 6934.66
-9800 WT 10.2, VIS 41
-9812 INC 90.1, AZM 270.39, TVD 6934.49

-9750 MARL: dk gy-gy brn,
sbbly-sbply, sft-sbfm,
mod calc, mod arg, sl silty;
CHK: lt gy-gy, sft-sbfm,
sbbly, mot, v calc, rthy-sl
wxy lstr, tr py, tr tan bent;



-10000 MARL: dk gy-gy brn, sbblky-sbply, sft-sbfrm, mod calc, mod arg, sl silty; CHK: lt gy-gy, sft-sbfrm, sbblky, mot, v calc, rthy-sl wxy lstr, tr bent w dissem py;

-10110
-10120
-10130
-10140
-10150
-10160
-10170
-10180
-10190
-10200
-10210
-10220
-10230
-10240
-10250
-10260
-10270
-10280
-10290
-10300
-10310
-10320
-10330
-10340
-10350
-10360
-10370



-10110 WT
10.3, VIS 41

-10190 INC 92,
AZM 270.61,
TVD 6920.69

-10210 WT
10.3, VIS 41

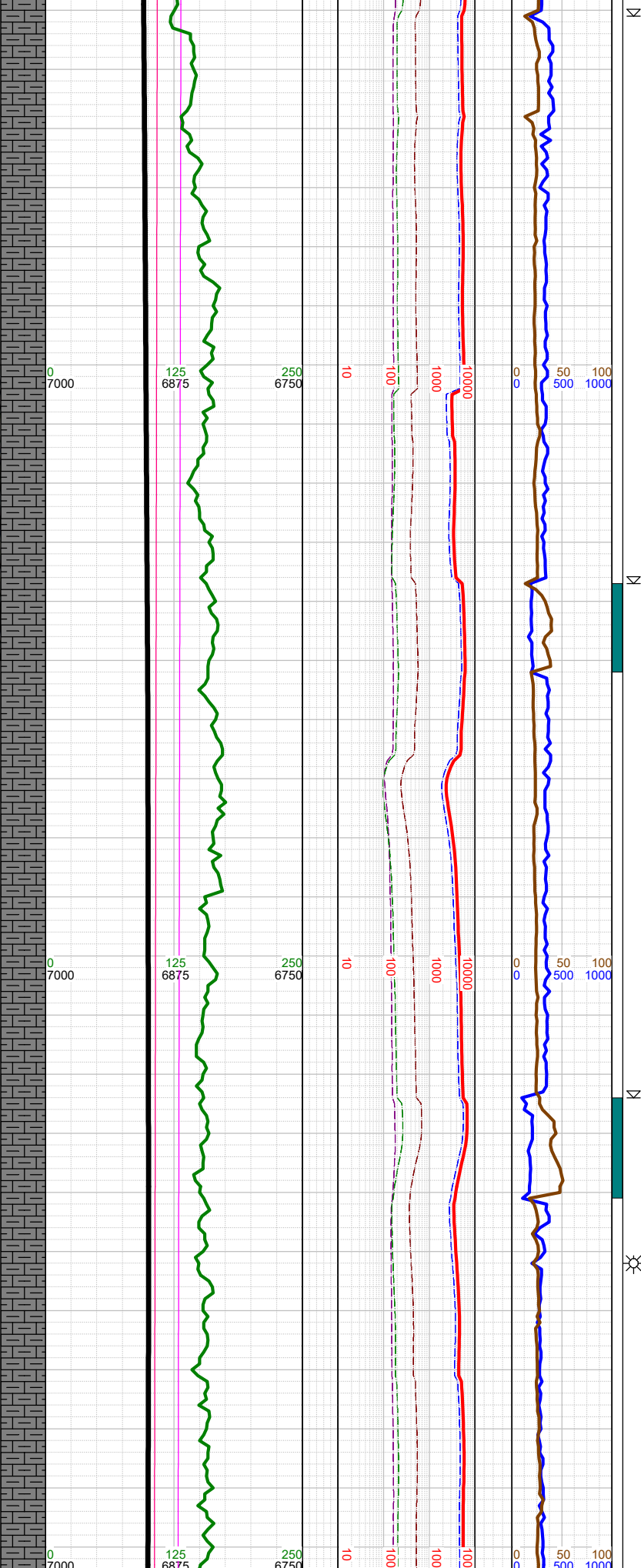
-10285 INC
92.31, AZM
270.61, TVD
6917.11

-10300 WT
10.3, VIS 41



-10250 MARL: dk gy-gy
brn, sbblky-sbplty, sft-
sbfrm, mod calc, mod arg,
sl silty; CHK: lt gy-gy, sft-
sbfrm, sbblky, mot, v calc,
rthy-sl wxy lstr, tr bent w
dissem py;

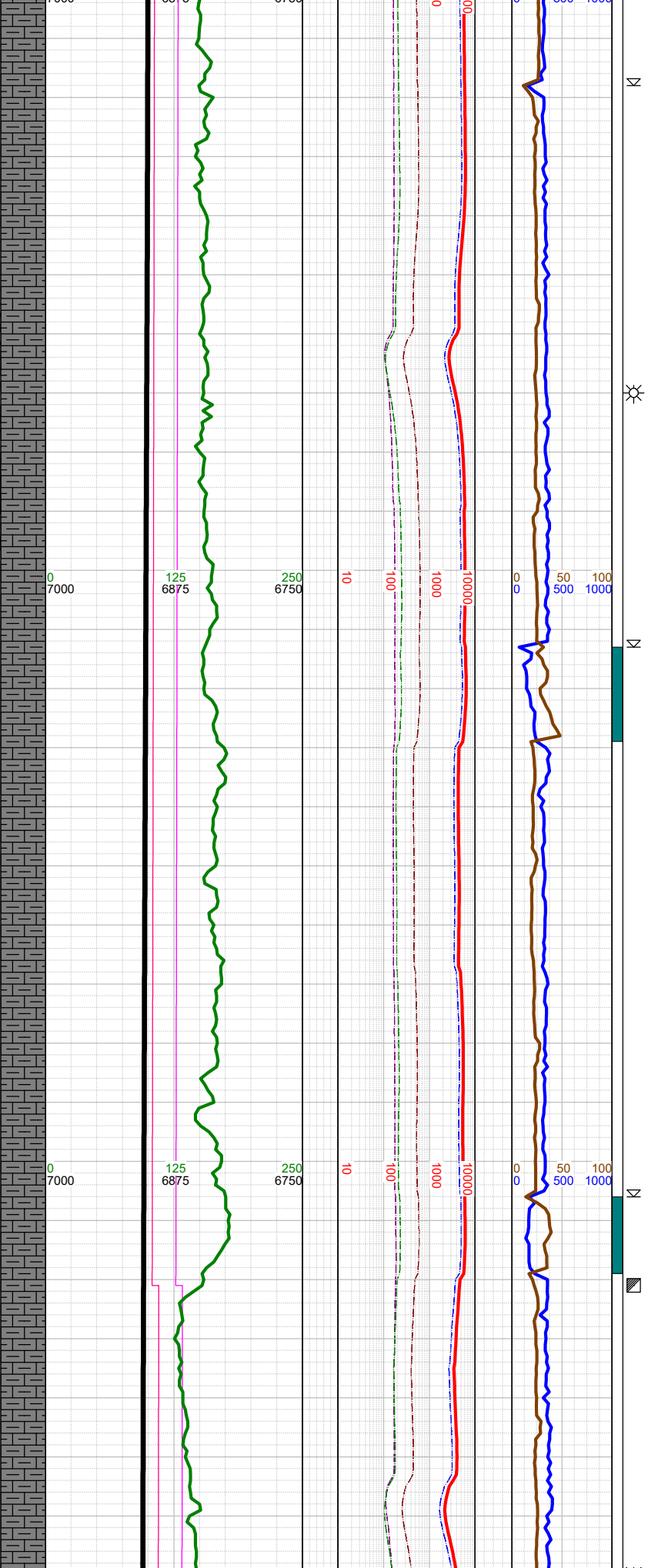
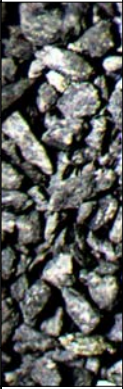
-10640
-10650
-10660
-10670
-10680
-10690
-10700
-10710
-10720
-10730
-10740
-10750
-10760
-10770
-10780
-10790
-10800
-10810
-10820
-10830
-10840
-10850
-10860
-10870
-10880
-10890
-10900



INC
-10663 INC
92.4, AZM
270.08, TVD
6903.63
WT
-10700 WT
10.4, VIS 43
INC
-10758 INC
91.38, AZM
270.3, TVD
6900.5
WT
-10800 WT
10.4, VIS 43
INC
-10853 INC
89.62, AZM
269.38, TVD
6899.67
WT
-10900 WT
10.4, VIS 43

-10750 MARL: dk gy-gy
brn, sbblky-sbplty, sft-
sbfrm, mod calc, mod arg,
sl silty; CHK: lt gy-gy, sft-
sbfrm, sbblky, mot, v calc,
rthy-sl wxy lstr, tr bent w
dissem py;

-10910
-10920
-10930
-10940
-10950
-10960
-10970
-10980
-10990
-11000
-11010
-11020
-11030
-11040
-11050
-11060
-11070
-11080
-11090
-11100
-11110
-11120
-11130
-11140
-11150
-11160



10.4, VIS 43

-10947 INC
88.69, AZM
268.32, TVD
6901.06

-11000 WT
10.4, VIS 43

-11042 INC
88.69, AZM
268.72, TVD
6903.23

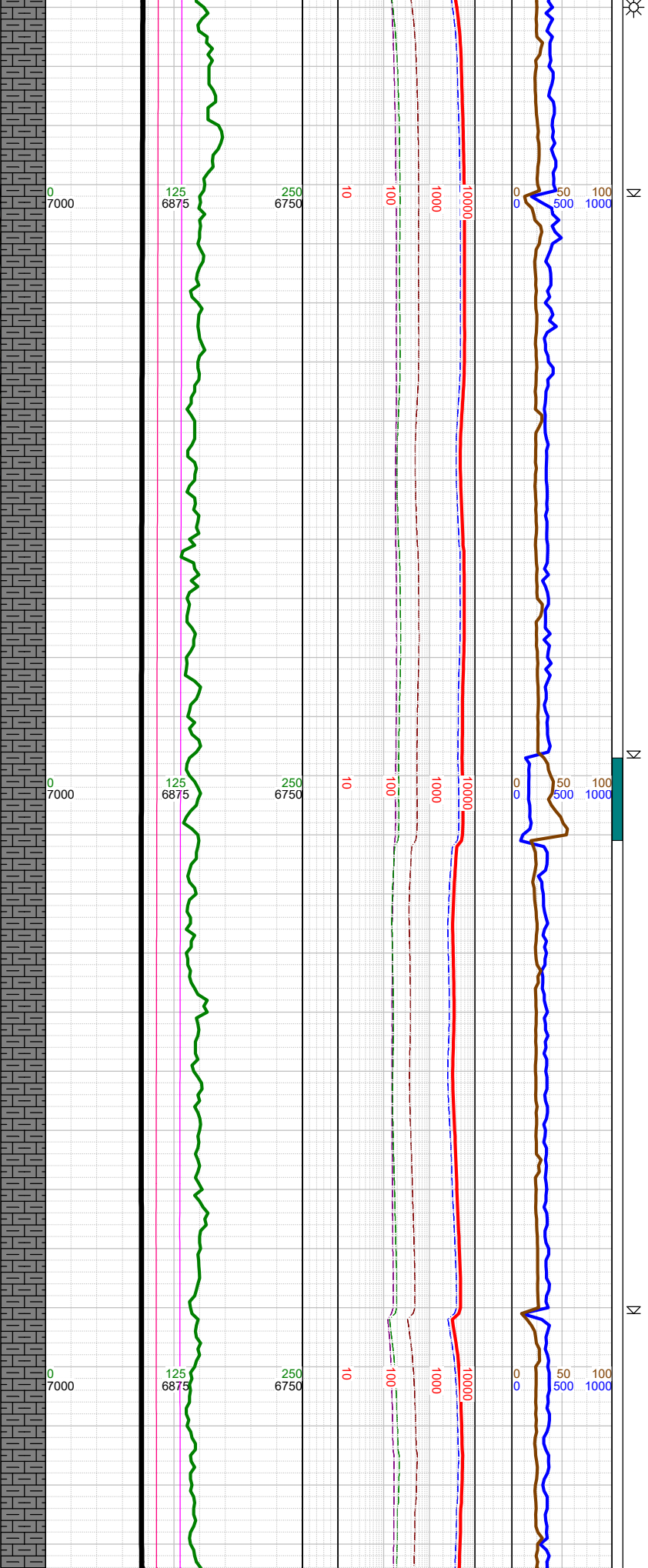
-11100 WT
10.45, VIS 43

-11121 Fault: 6'
up-throw; stayed
in A Marl

-11136 INC
89.22, AZM
268.89, TVD
6904.94

-11000 MARL: dk gy-gy
brn, sbbkly-sbply, sft-
sbfrm, mod calc, mod arg,
sl silty; CHK: lt gy-gy, sft-
sbfrm, sbbkly, mot, v calc,
rthy-sl wxy lstr, tr bent w
dissem py;

-11170
-11180
-11190
-11200
-11210
-11220
-11230
-11240
-11250
-11260
-11270
-11280
-11290
-11300
-11310
-11320
-11330
-11340
-11350
-11360
-11370
-11380
-11390
-11400
-11410
-11420
-11430



-11200 WT
10.45, VIS 43

-11231 INC
89.4, AZM
268.72, TVD
6906.09

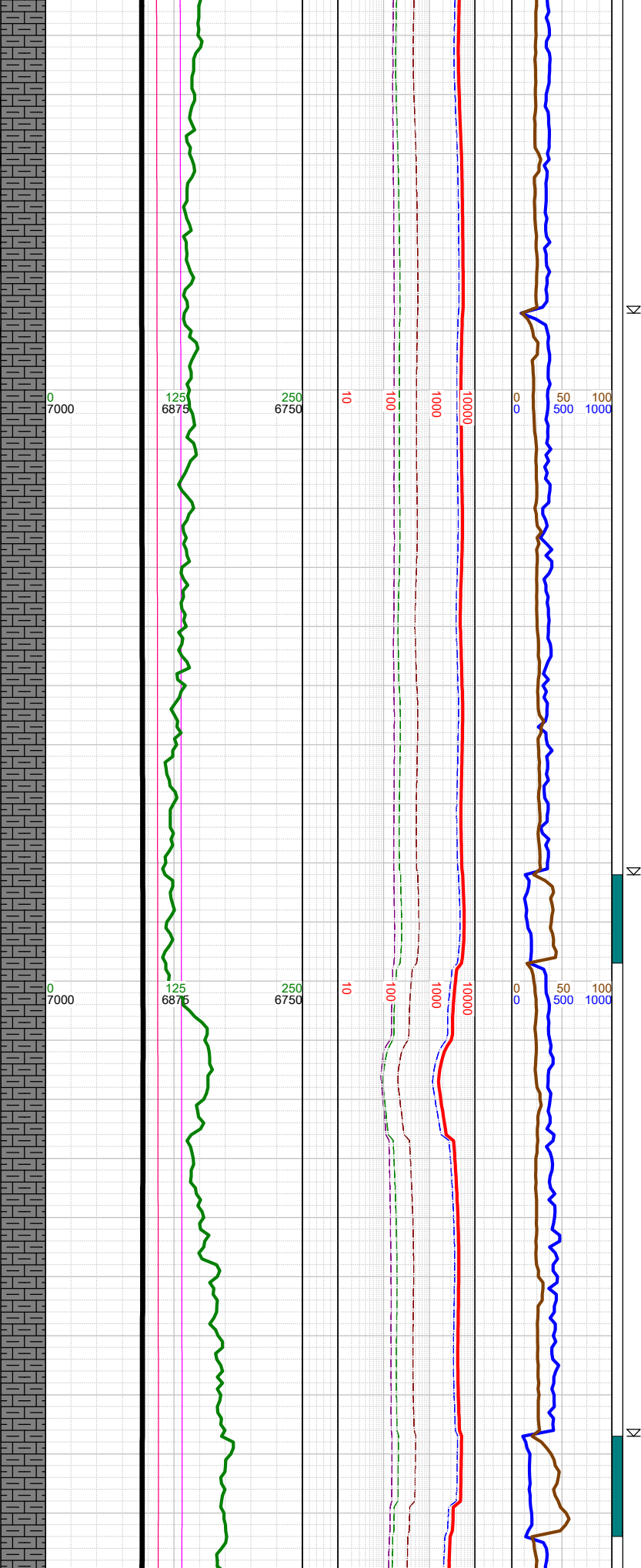
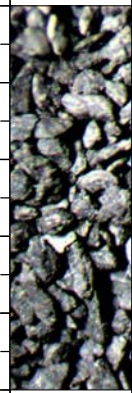
-11300 WT
10.45, VIS 43

-11326 INC
89.48, AZM 270,
TVD 6907.01

-11400 WT
10.35, VIS 42

-11250 MARL: dk gy-gy
brn, sbbkly-sbpity, sft-
sbfm, mod calc, mod arg,
sl silty; CHK: lt gy-gy, sft-
sbfm, sbbkly, mot, v calc,
rthy-sl wxy lstr, tr bent w
dissem py;

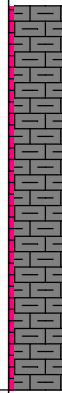
-11440
-11450
-11460
-11470
-11480
-11490
-11500
-11510
-11520
-11530
-11540
-11550
-11560
-11570
-11580
-11590
-11600
-11610
-11620
-11630
-11640
-11650
-11660
-11670
-11680
-11690



K

K

K



-11500 MARL: dk gy-gy
brn, sbbiky-sbpity, sft-
sbfrm, mod calc, mod arg,
sl silty; CHK: lt gy-gy, sft-
sbfrm, sbbiky, mot, v calc,
rthy-sl wxy lstr, tr bent w
dissem py;

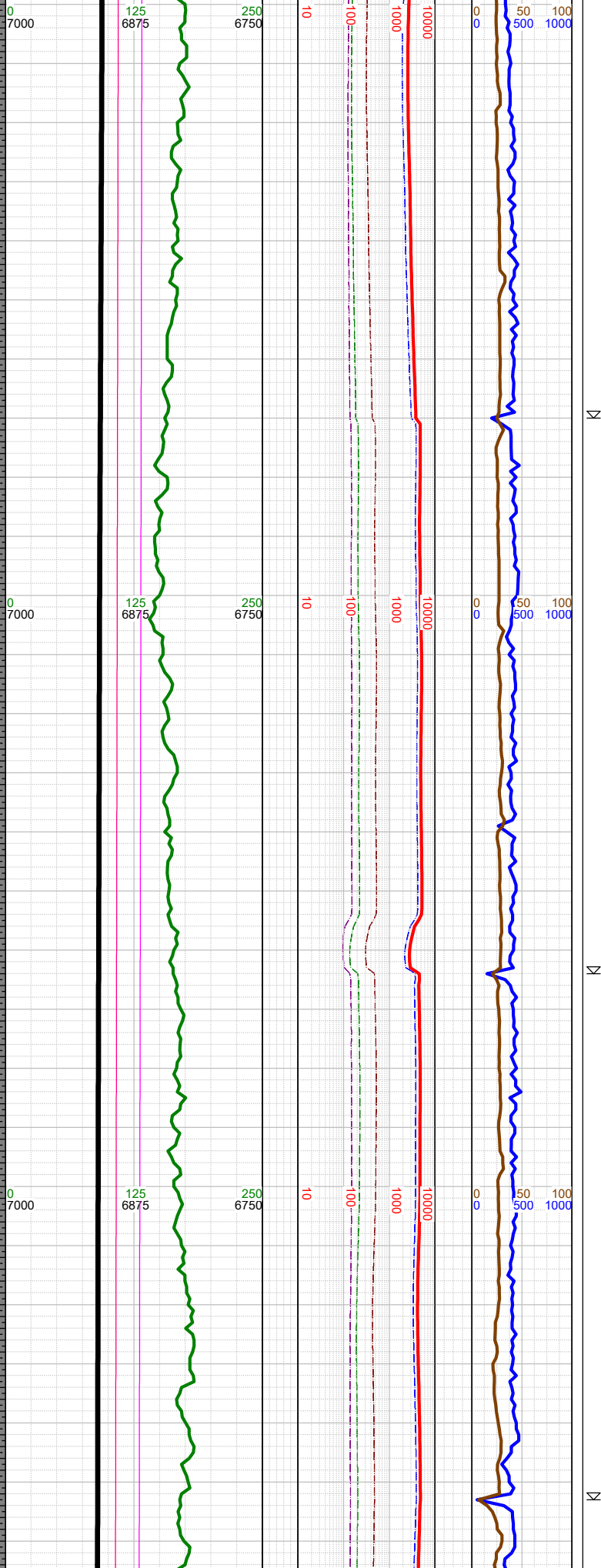
-11500 WT
10.35, VIS 42

-11515 INC
90.99, AZM
269.38, TVD
6906.24

-11600 WT
10.5, VIS 42

-11609 INC
90.41, AZM
270.39, TVD
6905.09

-11700
-11710
-11720
-11730
-11740
-11750
-11760
-11770
-11780
-11790
-11800
-11810
-11820
-11830
-11840
-11850
-11860
-11870
-11880
-11890
-11900
-11910
-11920
-11930
-11940
-11950
-11960



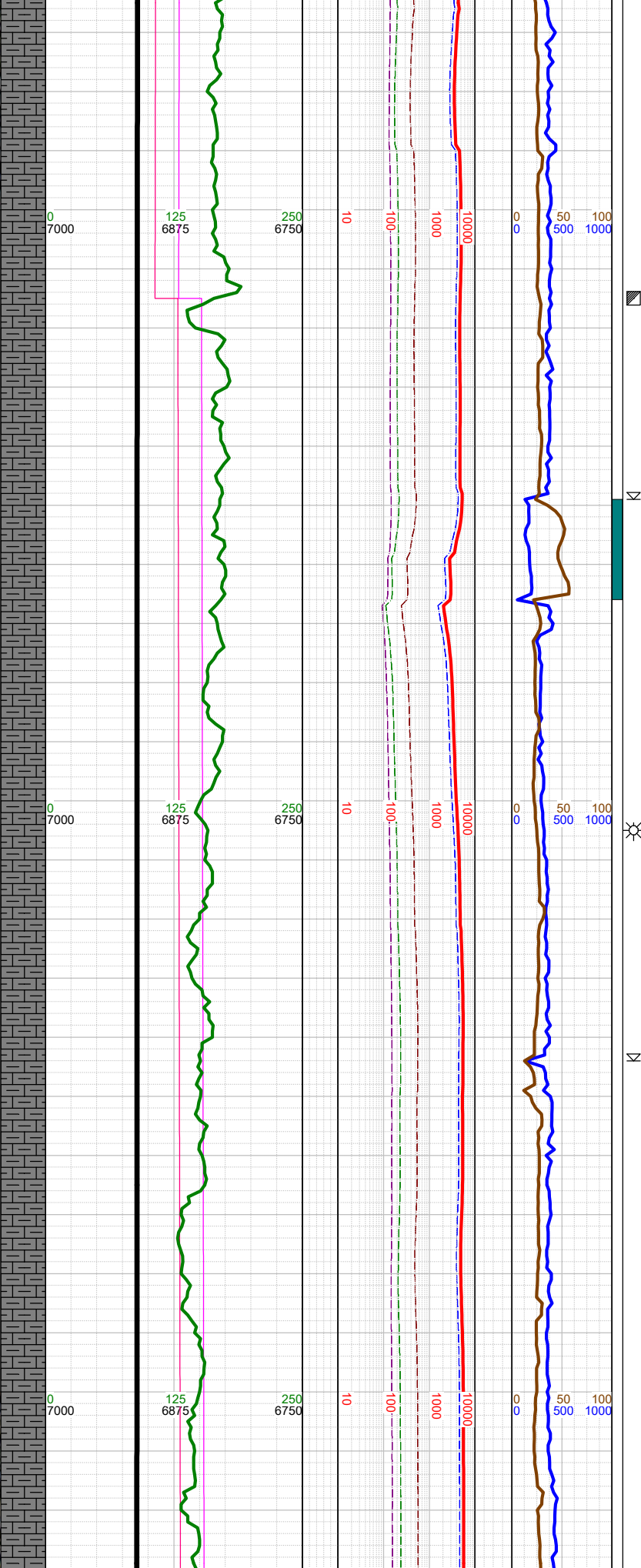
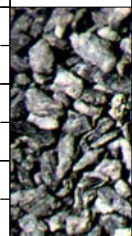
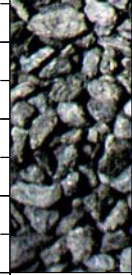
-11704 INC 88.29, AZM 270.3, TVD 6906.17
-11720 WT 10.5, VIS 42
-11798 INC 88.91, AZM 270.3, TVD 6908.47
-11810 WT 10.5, VIS 42
-11893 INC 89.4, AZM 270.3, TVD 6909.87
-11910 WT 10.4, VIS 42

-11750 MARL: dk gy-gy
brn, sbblky-sbply, sft-
sbfrm, mod calc, mod arg,
sl silty; CHK: lt gy-gy, sft-
sbfrm, sbblky, mot, v calc,
rthy-sl wxy lstr, tr bent w
dissem py;

-12000 MARL: dk gy-gy
brn, sbblky-sbply, sft-
sbfrm, mod calc, mod arg,
sl silty; CHK: lt gy-gy, sft-
sbfrm, sbblky, mot, v calc,

0.0m; 0.0m; 1.0m; 1.0m;
rthy-sl wxy lstr, tr gn bent,
tr py;

-11970
-11980
-11990
-12000
-12010
-12020
-12030
-12040
-12050
-12060
-12070
-12080
-12090
-12100
-12110
-12120
-12130
-12140
-12150
-12160
-12170
-12180
-12190
-12200
-12210
-12220
-12230



-11987 INC
89.62, AZM
269.38, TVD
6910.67

-12000 WT
10.4, VIS 42

-12015 Fault:
22' up-throw;
stayed in A Marl

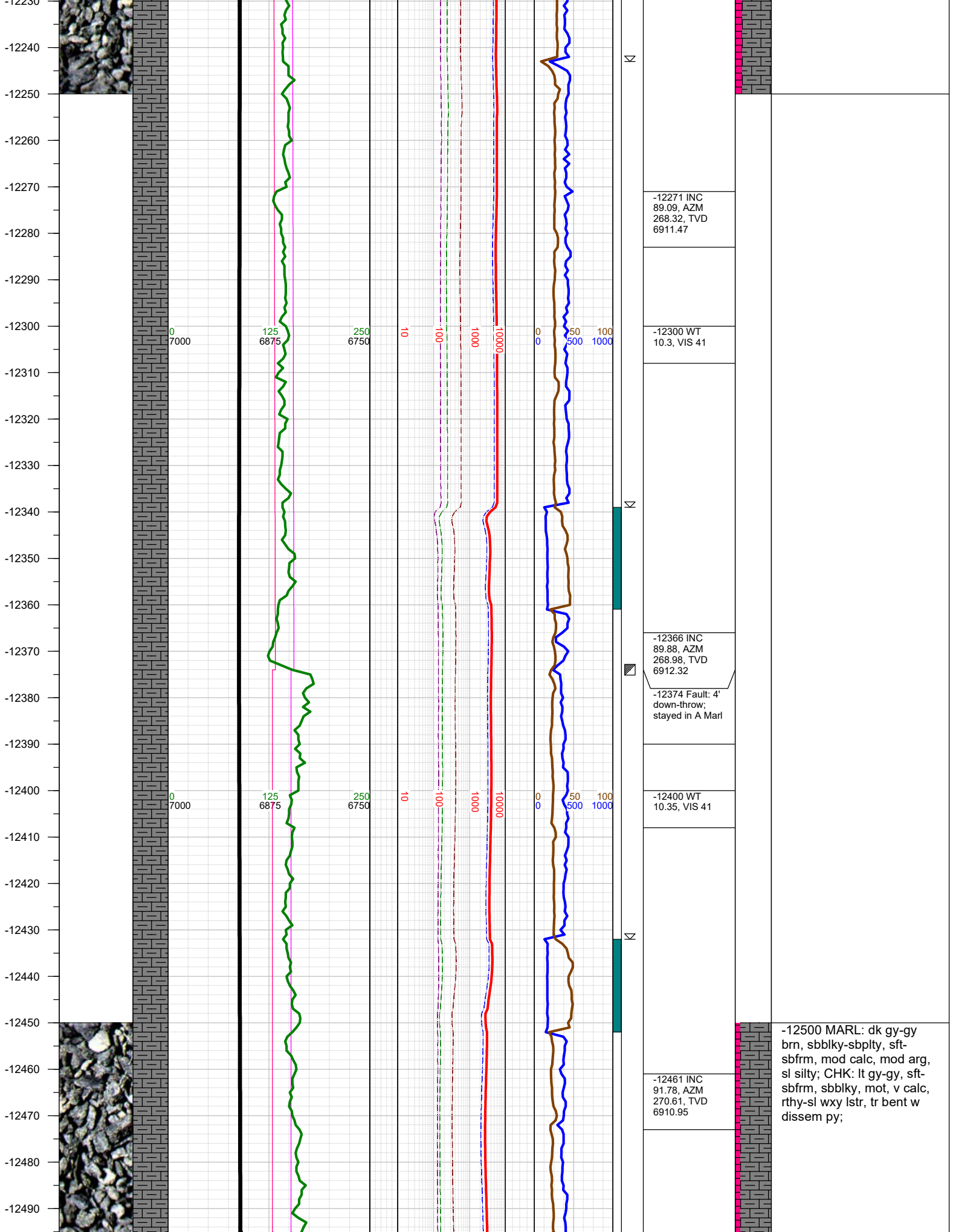
-12082 INC
89.88, AZM
271.1, TVD
6911.08

-12100 WT
10.4, VIS 42

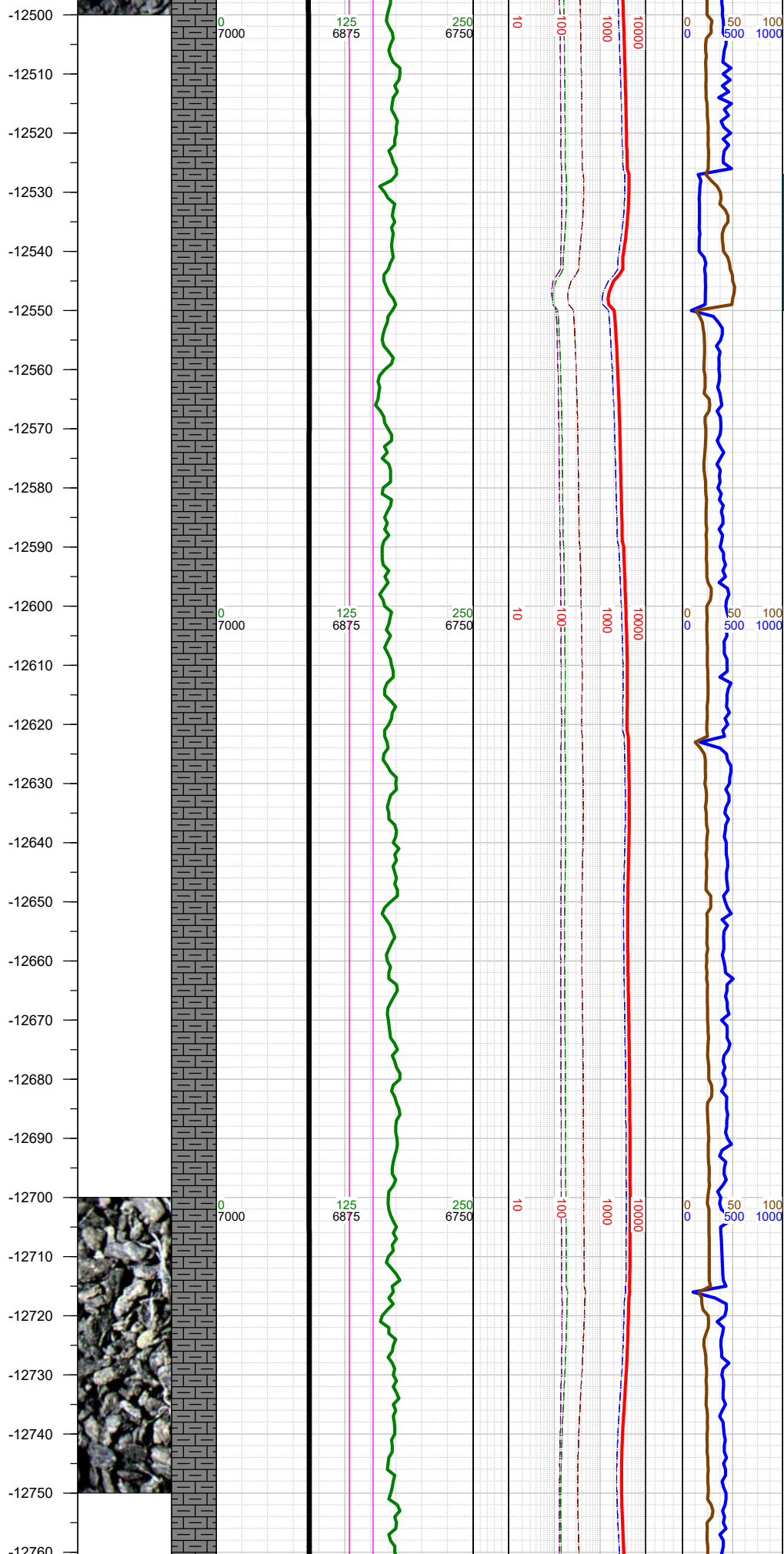
-12177 INC
90.28, AZM
270.7, TVD
6910.95

-12200 WT
10.3, VIS 41

-12250 MARL: dk gy-gy
brn, sbbiky-sbplty, sft-
sbfrm, mod calc, mod arg,
sl silty; CHK: lt gy-gy, sft-
sbfrm, sbbiky, mot, v calc,
rthy-sl wxy lstr, tr gn bent,
tr py;



-12500 MARL: dk gy-gy brn, sbblky-sbply, sft-sbfrm, mod calc, mod arg, sl silty; CHK: lt gy-gy, sft-sbfrm, sbblky, mot, v calc, rthy-sl wxy lstr, tr bent w dissep py;



-12500 WT
10.35, VIS 41

-12555 INC
89.79, AZM
271.58, TVD
6909.66

-12600 WT
10.35, VIS 41

-12650 INC
89.88, AZM
271.01, TVD
6909.93

-12700 WT
10.4, VIS 41

-12744 INC
90.59, AZM
271.89, TVD
6909.55

-12750 MARL: dk gy-gy
brn, sbbiky-sbplty, sft-
sbfrm, mod calc, mod arg,
sl silty; CHK: lt gy-gy, sft-
sbfrm, sbbiky, mot, v calc,
rthy-sl wxy lstr, mod py, tr
bent w disse py;

-12770
-12780
-12790
-12800
-12810
-12820
-12830
-12840
-12850
-12860
-12870
-12880
-12890
-12900
-12910
-12920
-12930
-12940
-12950
-12960
-12970
-12980
-12990
-13000
-13010
-13020



-12800 WT
10.4, VIS 41

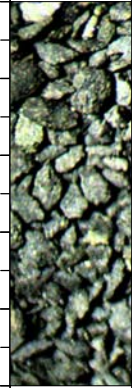
-12839 INC
89.22, AZM
272.68, TVD
6909.7

-12900 WT
10.4, VIS 41

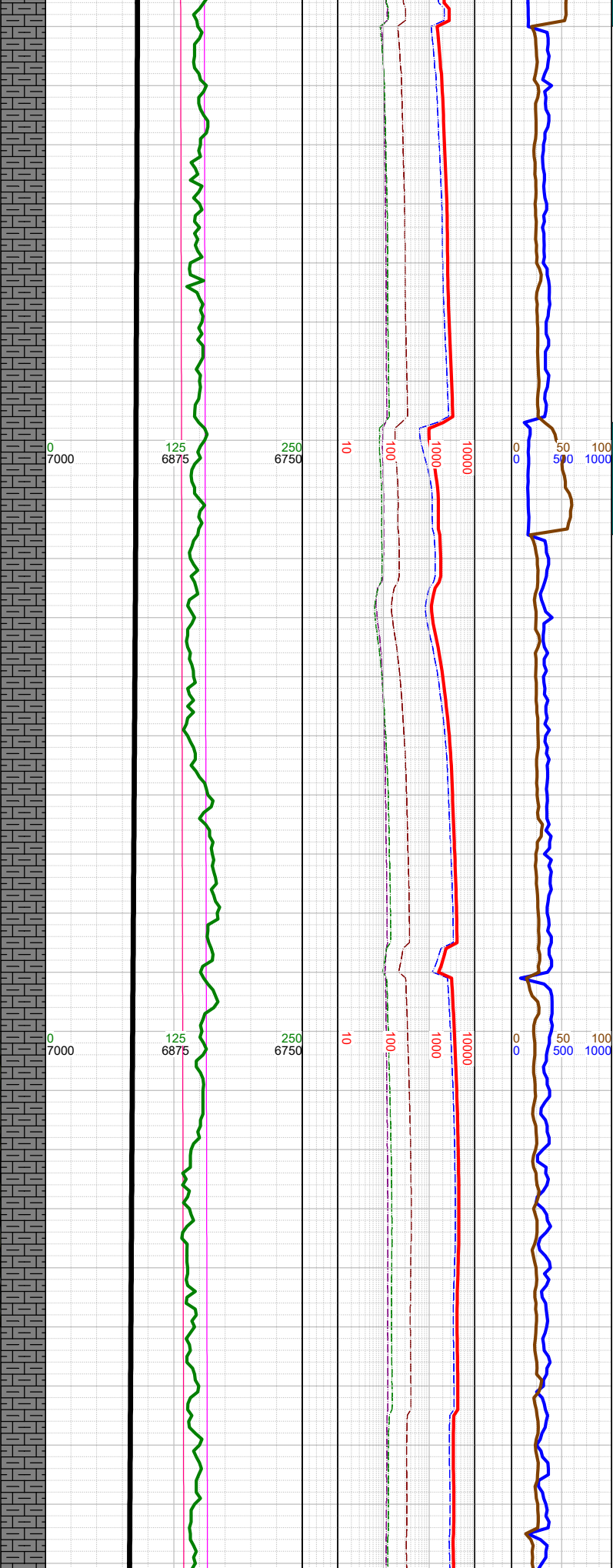
-12933 INC
90.01, AZM
273.21, TVD
6910.34

-13000 MARL: dk gy-gy
brn, sbbiky-sbplty, sft-
sbfrm, mod calc, mod arg,
sl silty; CHK: lt gy-gy, sft-
sbfrm, sbbiky, mot, v calc,
rthy-sl wxy lstr, tr bent w
dissem py;

-13000 WT
10.4, VIS 41



-13030
-13040
-13050
-13060
-13070
-13080
-13090
-13100
-13110
-13120
-13130
-13140
-13150
-13160
-13170
-13180
-13190
-13200
-13210
-13220
-13230
-13240
-13250
-13260
-13270
-13280
-13290



-13028 INC
89.79, AZM
271.89, TVD
6910.5

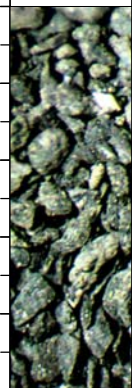
-13100 WT
10.4, VIS 41

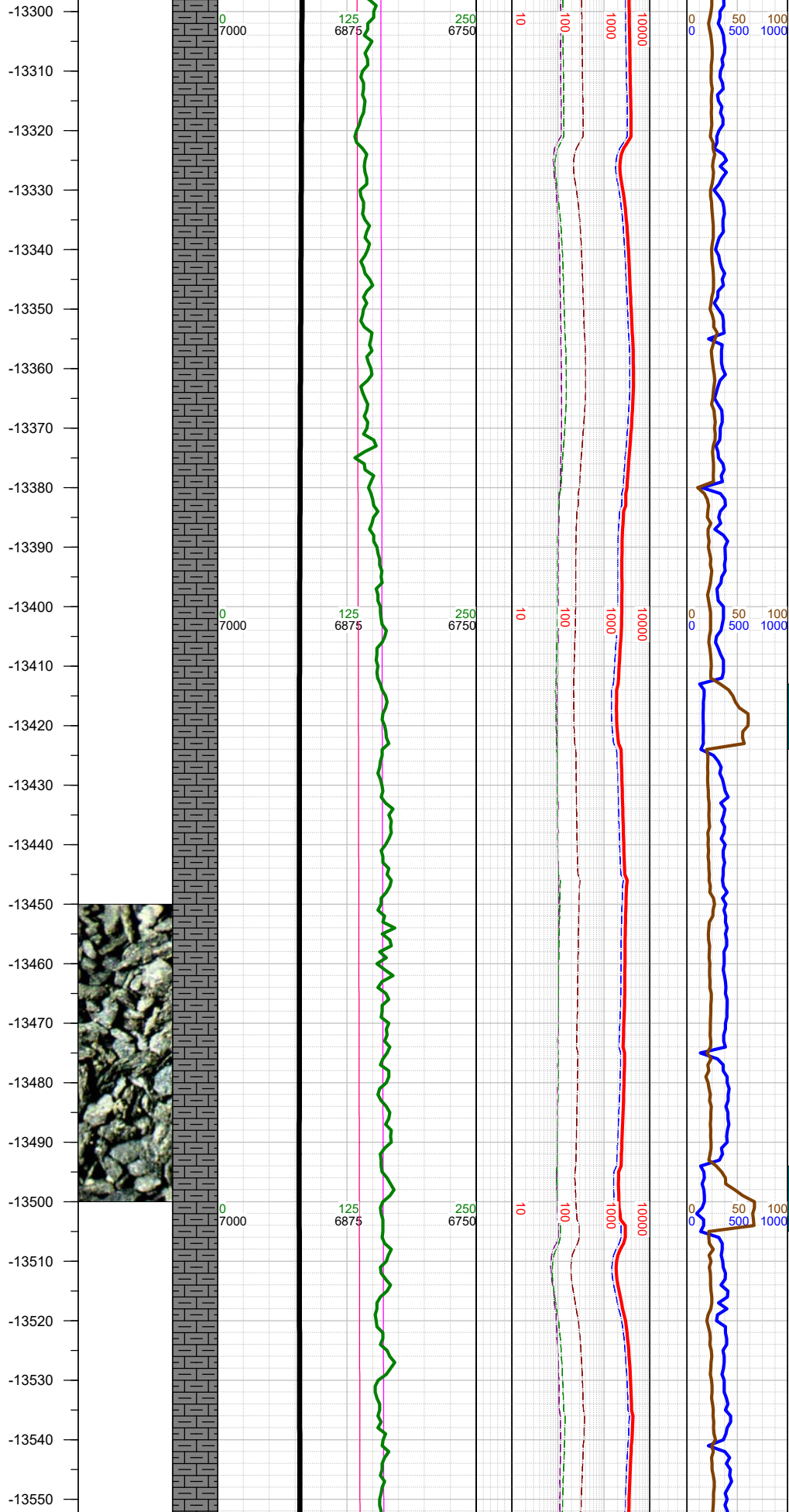
-13123 INC
87.89, AZM
270.48, TVD
6912.43

-13200 WT
10.4, VIS 41

-13217 INC
87.98, AZM
270.7, TVD
6915.81

-13250 MARL: dk gy-gy
brn, sbbly-sbpity, sft-
sbfm, mod calc, mod arg,
sl silty; CHK: lt gy-med gy,
sft-sbfm, sbbly, mot ip, v
calc, rthy-sl wxy lstr, tr wh-
lt bl bent, some w dissem
py;





-13300 WT
10.4, VIS 41

-13311 INC
88.29, AZM
270.79, TVD
6918.87

-13406 INC
89.22, AZM
270.39, TVD
6920.94

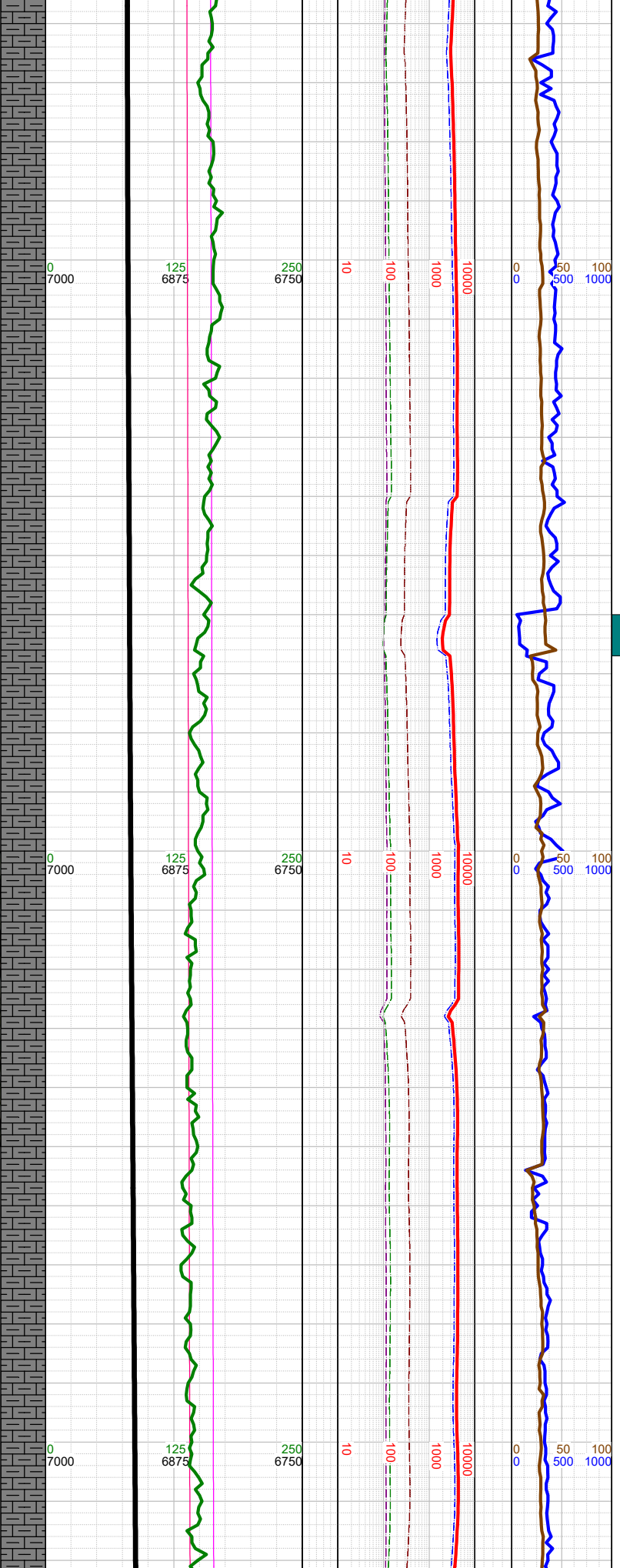
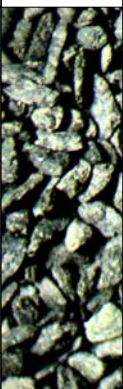
-13420 WT
10.4, VIS 41

-13501 INC
90.41, AZM
269.6, TVD
6921.24

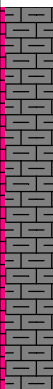
-13520 WT
10.4, VIS 41

-13500 MARL: dk gy-gy
brn, sbbkly-sbplty, sft-
sbfrm, mod calc, mod arg,
sl silty; CHK: lt gy-med gy,
sft-sbfrm, sbbkly, mot ip, v
calc, rthy-sl wxy lstr, tr py,
tr wh-lt bl bent, some w
dissem py;

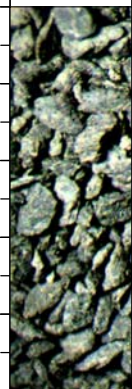
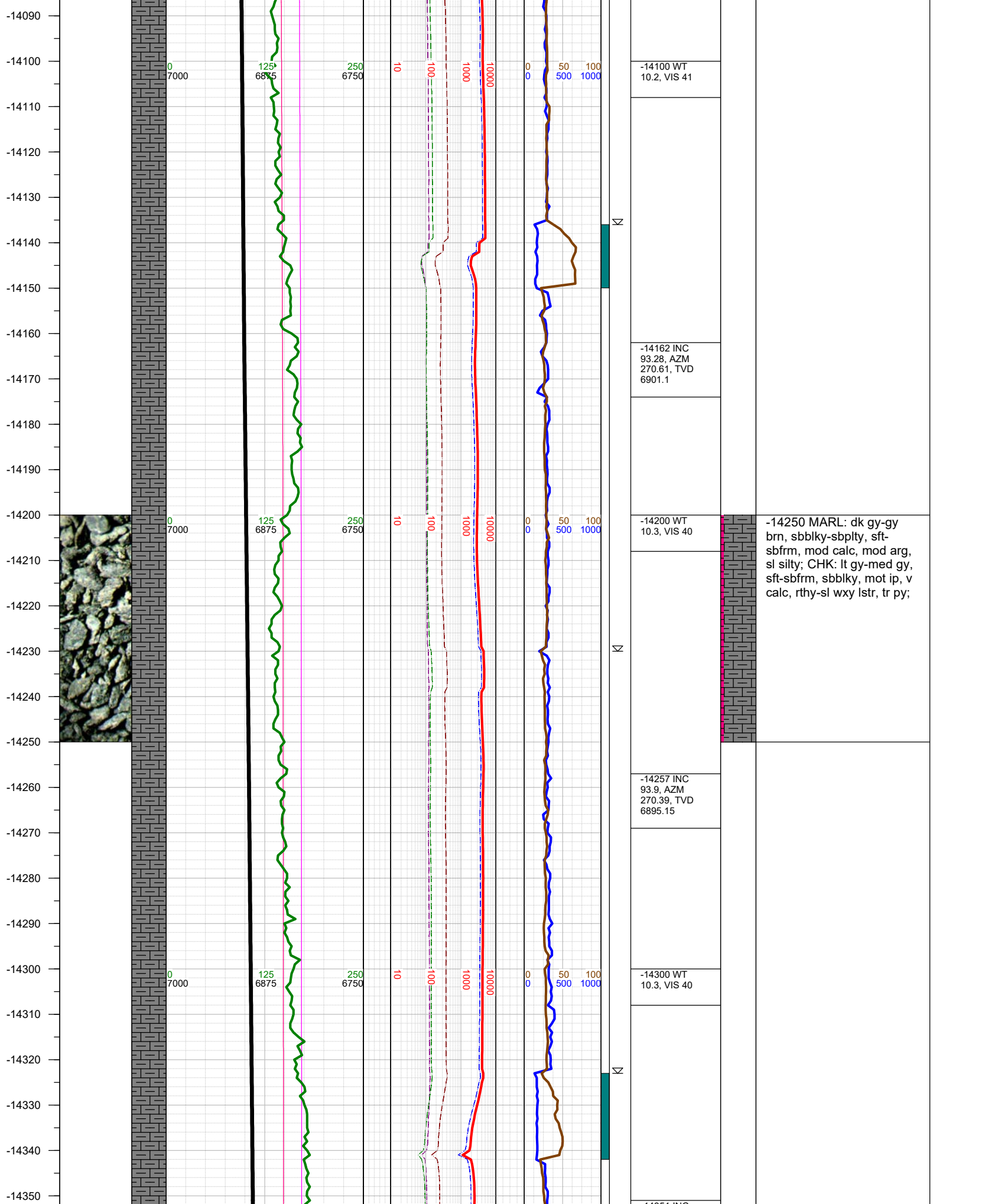
-13560
-13570
-13580
-13590
-13600
-13610
-13620
-13630
-13640
-13650
-13660
-13670
-13680
-13690
-13700
-13710
-13720
-13730
-13740
-13750
-13760
-13770
-13780
-13790
-13800
-13810
-13820



-13595 INC 91.21, AZM 270, TVD 6919.91
-13610 WT 10.2, VIS 41
-13690 INC 91.78, AZM 270.61, TVD 6917.43
-13710 WT 10.2, VIS 41
-13784 INC 92.71, AZM 270.39, TVD 6913.75
-13800 WT 10.2, VIS 41

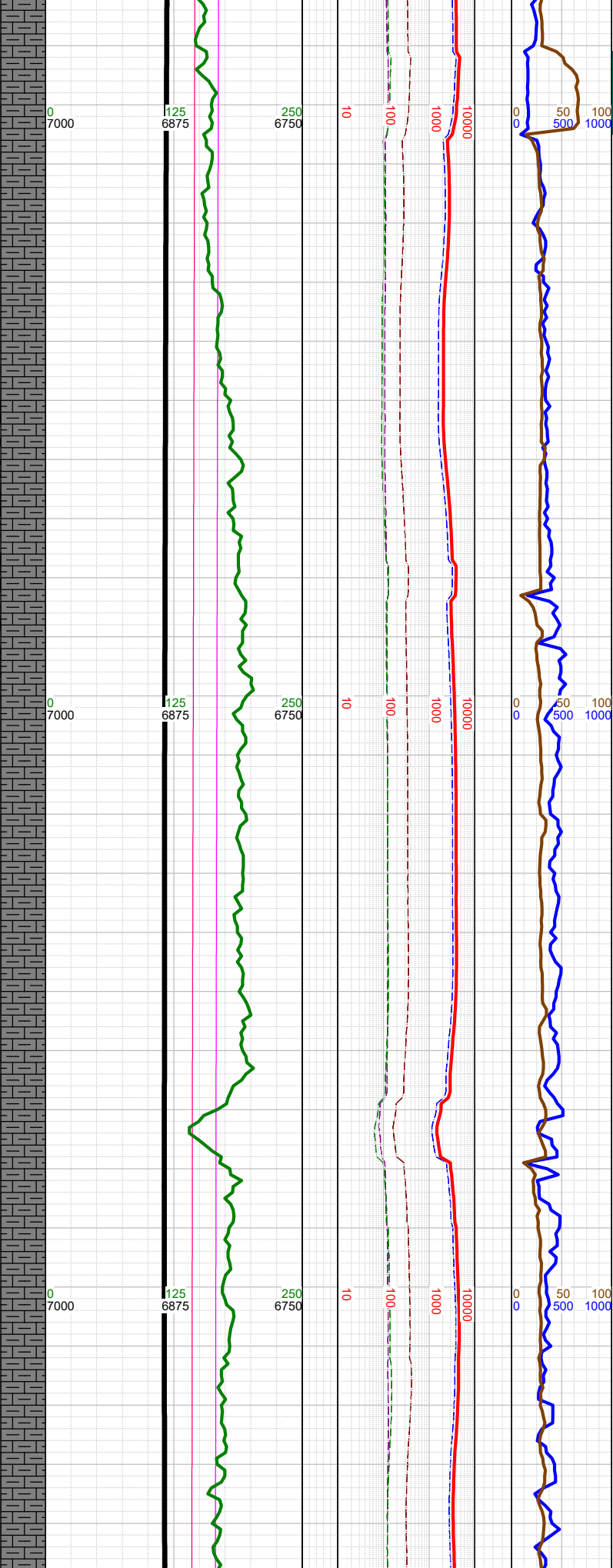


-13750 MARL: dk gy-gy
brn, sbbkly-sbpity, sft-
sbfrm, mod calc, mod arg,
sl silty; CHK: lt gy-med gy,
sft-sbfrm, sbbkly, mot ip, v
calc, rthy-sl wxy lstr, tr py,
tr wh-lt bl bent, some w
dissem py;



-14250 MARL: dk gy-gy
brn, sbbkly-sbplty, sft-
sbfrm, mod calc, mod arg,
sl silty; CHK: lt gy-med gy,
sft-sbfrm, sbbkly, mot ip, v
calc, rthy-sl wxy lstr, tr py;

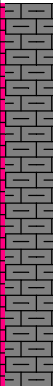
-14890
-14900
-14910
-14920
-14930
-14940
-14950
-14960
-14970
-14980
-14990
-15000
-15010
-15020
-15030
-15040
-15050
-15060
-15070
-15080
-15090
-15100
-15110
-15120
-15130
-15140



⊞
⊞
⊞
⊞

-14900 WT
10.4, VIS 40

-14919 INC
89.09, AZM
270.48, TVD
6882.82



-15000 MARL: dk gy-gy
brn, sbbkly-sbplty, sft-
sbfrm, mod calc, mod arg,
sl silty; CHK: lt gy-med gy,
sft-sbfrm, sbbkly, mot ip, v
calc, rthy-sl wxy lstr, tr py,
tr lt gy bent;

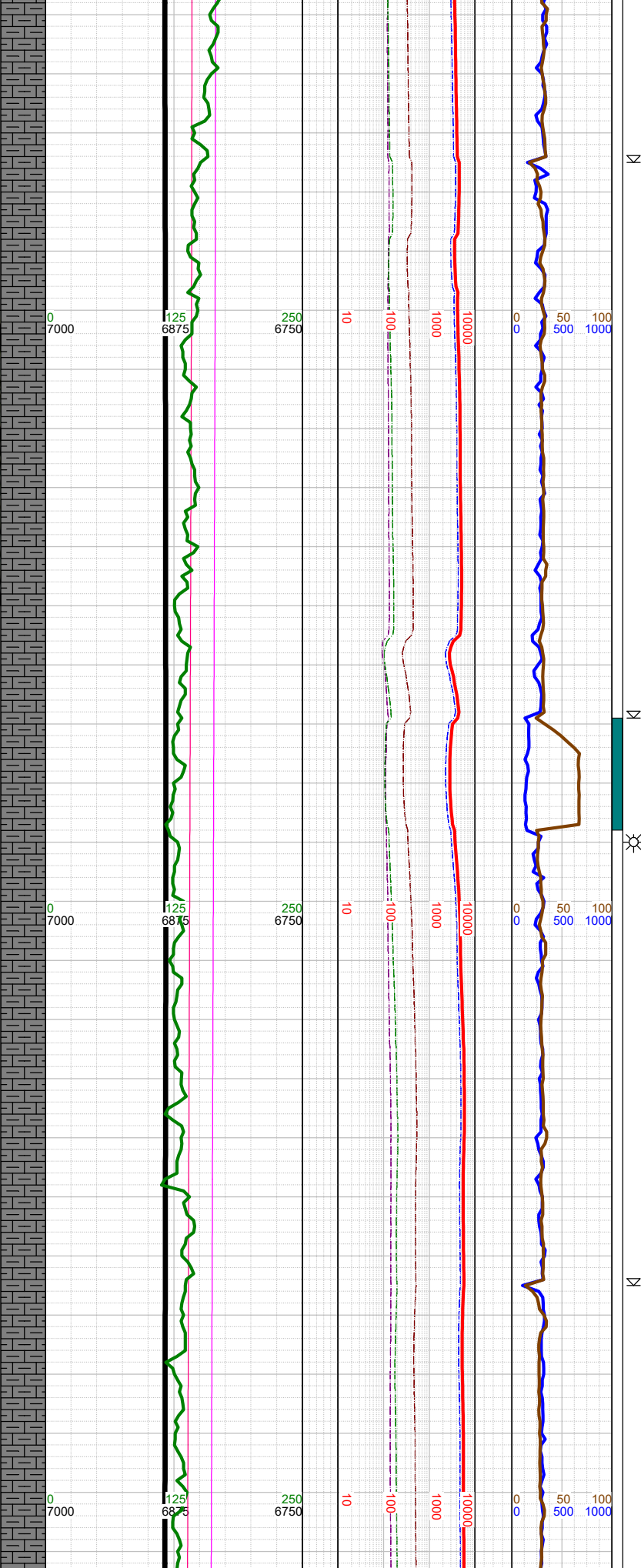
-15000 WT
10.4, VIS 40

-15013 INC
89.31, AZM
270.39, TVD
6884.13

-15100 WT
10.4, VIS 40

-15108 INC
90.28, AZM
270.22, TVD
6884.47

-15150
-15160
-15170
-15180
-15190
-15200
-15210
-15220
-15230
-15240
-15250
-15260
-15270
-15280
-15290
-15300
-15310
-15320
-15330
-15340
-15350
-15360
-15370
-15380
-15390
-15400
-15410



N
N
N

-15202 INC
90.99, AZM
269.91, TVD
6883.43

-15220 WT
10.4, VIS 40

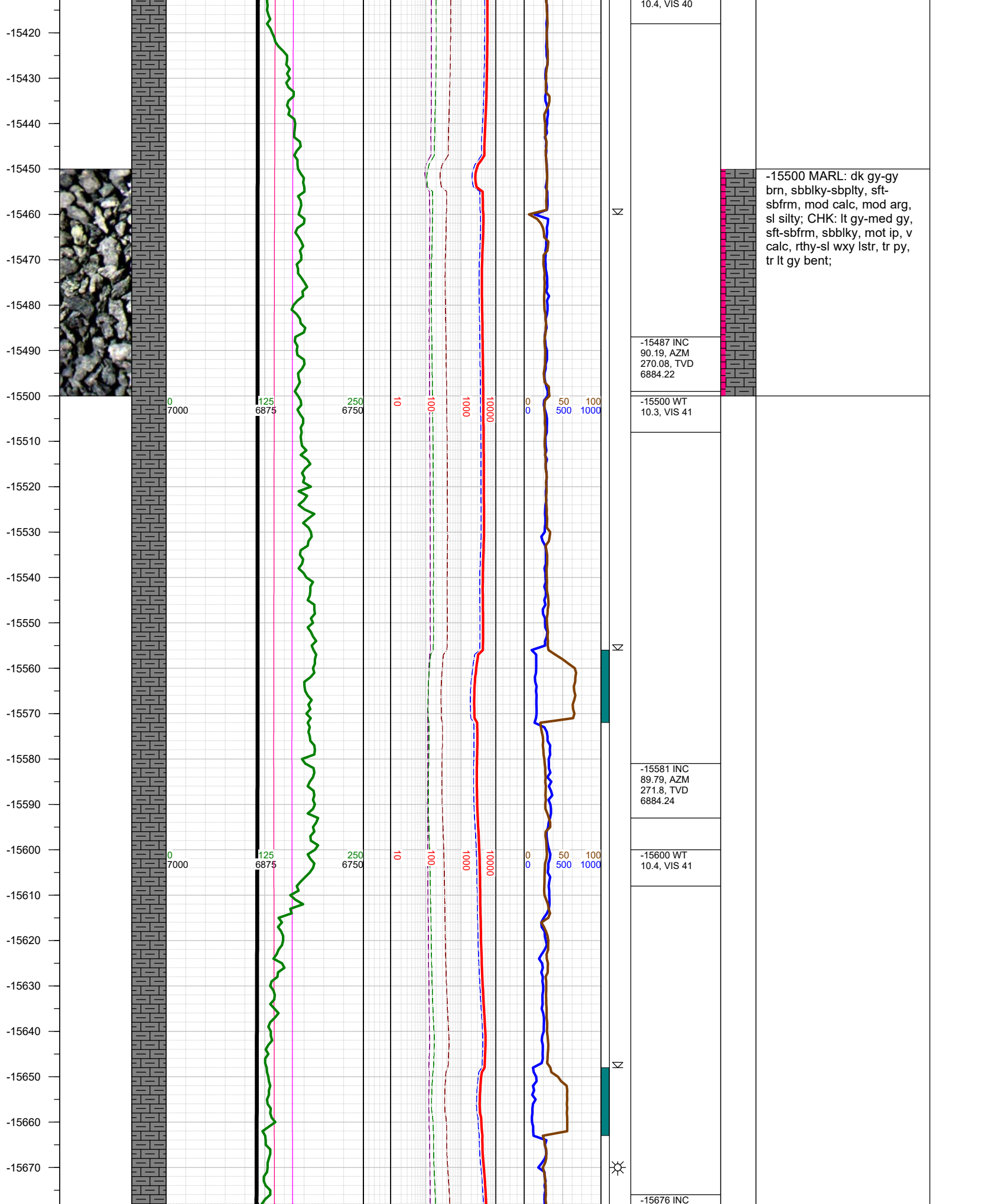
-15297 INC
89.62, AZM
270.3, TVD
6882.92

-15310 WT
10.4, VIS 40

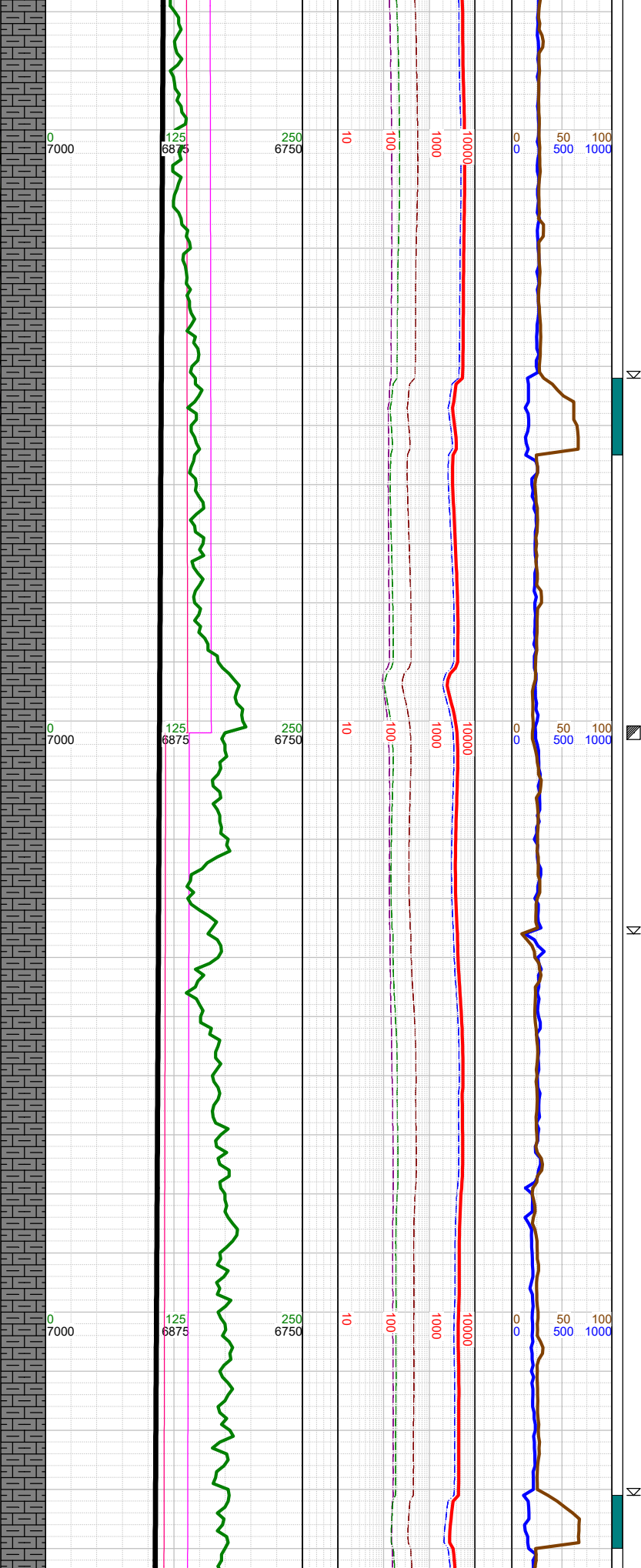
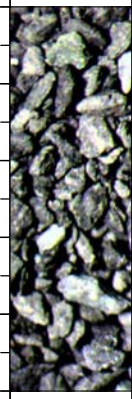
-15392 INC
89.31, AZM 270,
TVD 6883.81

-15410 WT

-15250 MARL: dk gy-gy
brn, sbblky-sbplty, sft-
sbfrm, mod calc, mod arg,
sl silty; CHK: lt gy-med gy,
sft-sbfrm, sbblky, mot ip, v
calc, rthy-sl wxy lstr, tr py,
tr lt gy bent;



-15680
-15690
-15700
-15710
-15720
-15730
-15740
-15750
-15760
-15770
-15780
-15790
-15800
-15810
-15820
-15830
-15840
-15850
-15860
-15870
-15880
-15890
-15900
-15910
-15920
-15930
-15940



88.69, AZM
271.49, TVD
6885.5

-15700 WT
10.4, VIS 41

-15771 INC
87.98, AZM
270.39, TVD
6888.26

-15802 Fault:
22' down-throw;
stayed in A Marl

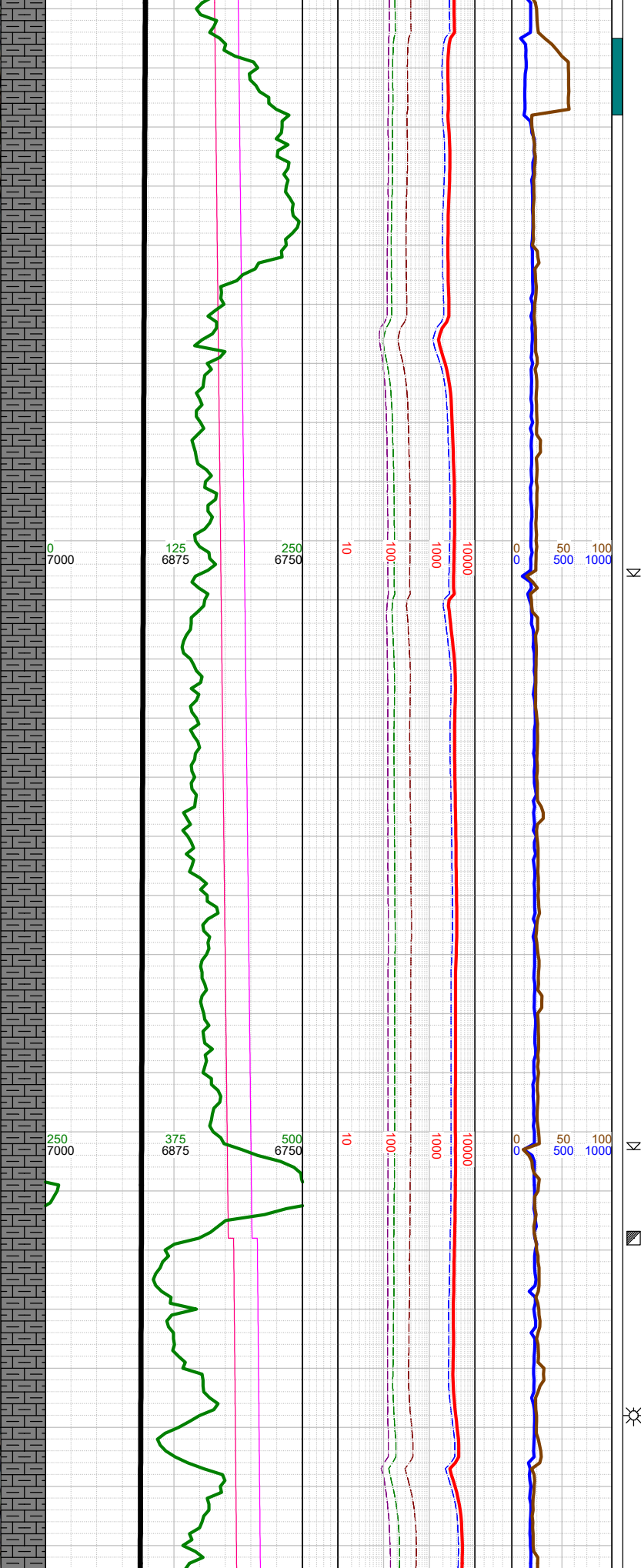
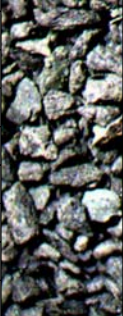
-15820 WT
10.4, VIS 41

-15865 INC
88.69, AZM
269.82, TVD
6890.99

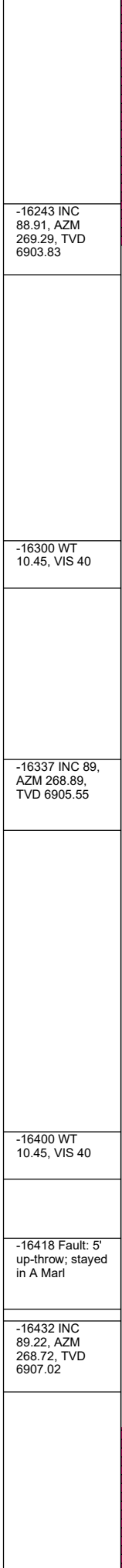
-15900 WT
10.4, VIS 40

-15750 MARL: dk gy-gy
brn, sbbkly-sbplty, sft-
sbfrm, mod calc, mod arg,
sl silty; CHK: lt gy-med gy,
sft-sbfrm, sbbkly, mot ip, v
calc, rthy-sl wxy lstr, tr py,
tr lt gy bent;

-16210
-16220
-16230
-16240
-16250
-16260
-16270
-16280
-16290
-16300
-16310
-16320
-16330
-16340
-16350
-16360
-16370
-16380
-16390
-16400
-16410
-16420
-16430
-16440
-16450
-16460
-16470



0 7000
125 6875
250 6750
10
100
1000
10000
0 0 50 100
500 1000
250 7000
375 6875
500 6750
10
100
1000
10000
0 0 50 100
500 1000



-16243 INC
88.91, AZM
269.29, TVD
6903.83

-16300 WT
10.45, VIS 40

-16337 INC 89,
AZM 268.89,
TVD 6905.55

-16400 WT
10.45, VIS 40

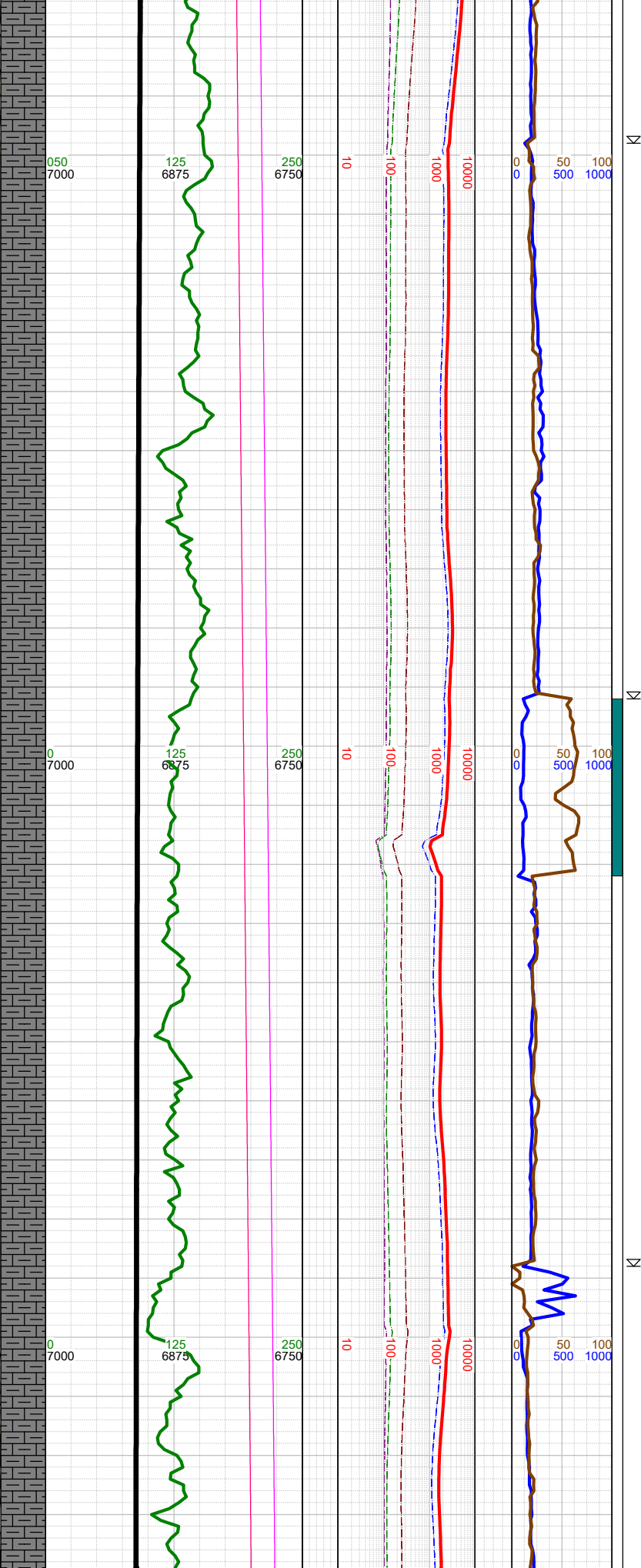
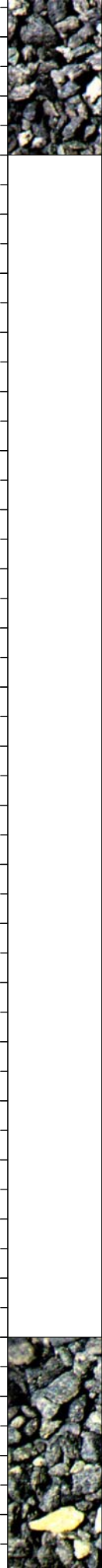
-16418 Fault: 5'
up-throw; stayed
in A Marl

-16432 INC
89.22, AZM
268.72, TVD
6907.02

sl silty; CHK: lt gy-med gy,
sft-sbfrm, sbblky, mot ip, v
calc, rthy-sl wxy lstr, tr py,
tr lt gy bent;

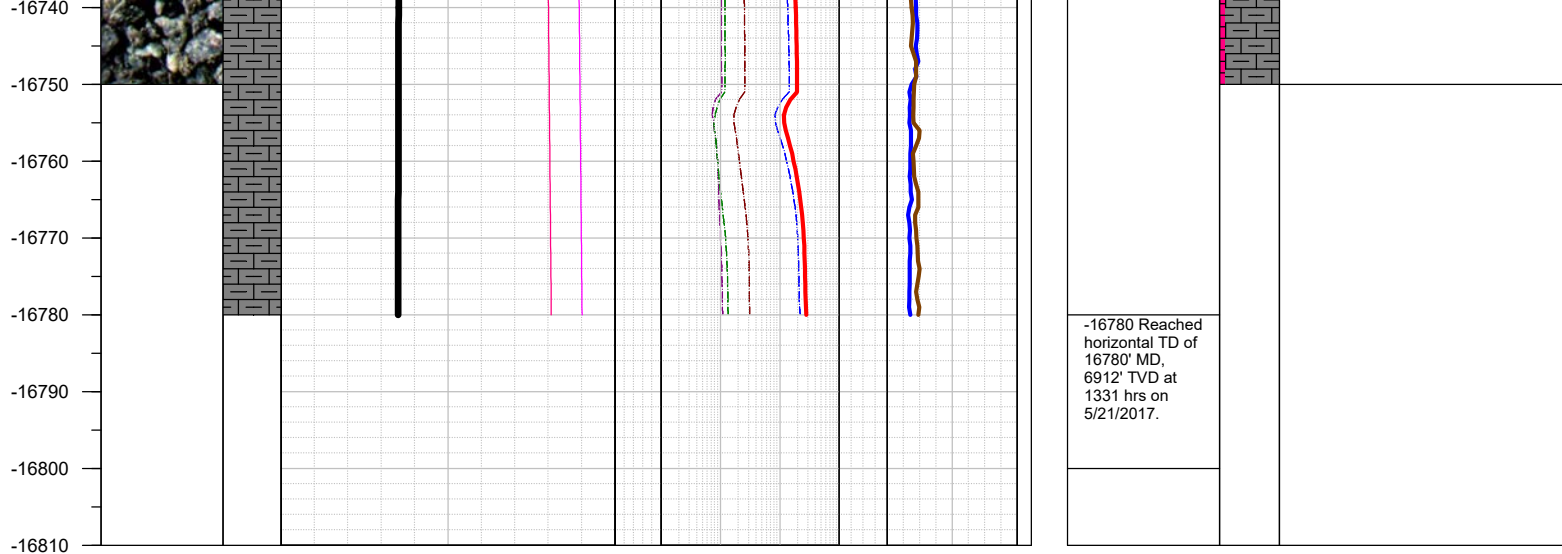
-16500 MARL: dk gy-gy
brn, sbblky-sbplty, sft-
sbfrm, mod calc, mod arg,
sl silty; CHK: lt gy-med gy,
sft-sbfrm, sbblky, mot ip, v
calc, rthy-sl wxy lstr, tr py,
tr lt gy bent;

-16480
-16490
-16500
-16510
-16520
-16530
-16540
-16550
-16560
-16570
-16580
-16590
-16600
-16610
-16620
-16630
-16640
-16650
-16660
-16670
-16680
-16690
-16700
-16710
-16720
-16730



K	-16500 WT 10.45, VIS 40
K	-16527 INC 88.38, AZM 267.79, TVD 6909.01
K	-16600 WT 10.4, VIS 40
K	-16621 INC 89.4, AZM 269.69, TVD 6910.84
K	-16700 WT 10.45, VIS 40

-16750 MARL: dk gy-gy
brn, sbblky-sbply, sft-
sbfrm, mod calc, mod arg,
sl silty; tr forams; CHK: lt
gy-med gy, sft-sbfrm,
sbblky, mot ip, v calc, rthy-
sl wxy lstr, tr py, mod bent;



TOTAL DEPTH = 16780'

Thank you for using Earth Science Agency