

OPERATOR: **Extraction Oil & Gas**
 WELL NAME: **Johnsons Corner 13-N**
 FIELD NAME: DJ Basin - Wattenberg
 DRILLING RIG: Cyclone 37
 API #: 05-069-06464

LAT/LONG: 40.356938, -104.973418
 SURFACE HOLE: SWNE S35-T5N-R68W, 2444' FNL, 2458' FEL
 BOTTOM HOLE: S33-T5N-R66W, 2613' FNL, 2193' FEL



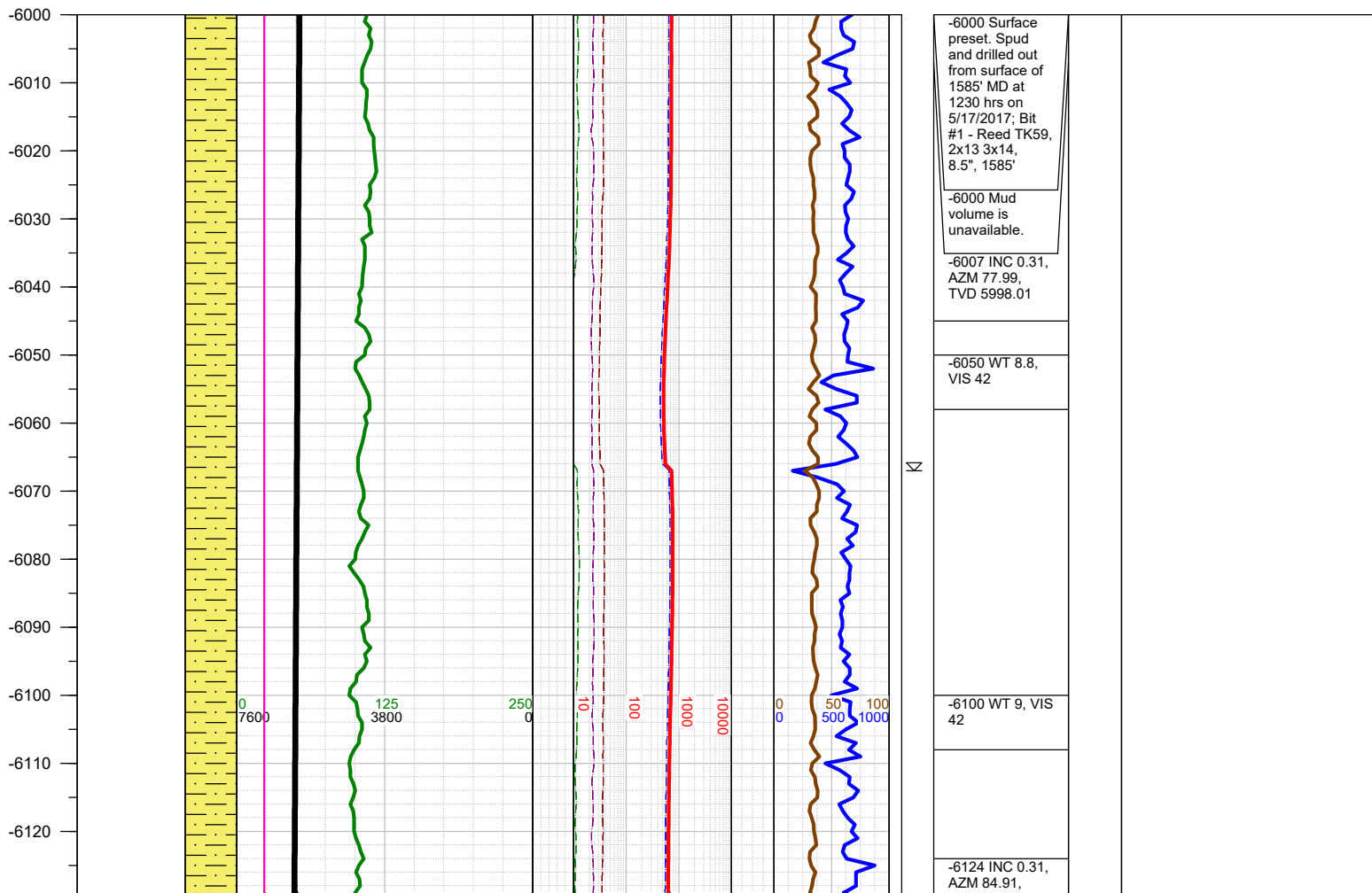
COUNTY: Weld
 STATE: Colorado
 GROUND ELEVATION: 5009'
 KELLY BUSHING: 5037'
 DRILLING FLUID: OBM
 TVD VS. MD: xxxx' / 9650'
 SPUD DATE: May 17, 2017
 TD DATE: May 19, 2017
 DEPTHS LOGGED: 6000' - 9650'
 DATES LOGGED: May 18, 2017 - May 19, 2017
 GEOLOGISTS: Ryan Gall, Tracy Lawson
 SCALE: 5" = 100'

LEGEND

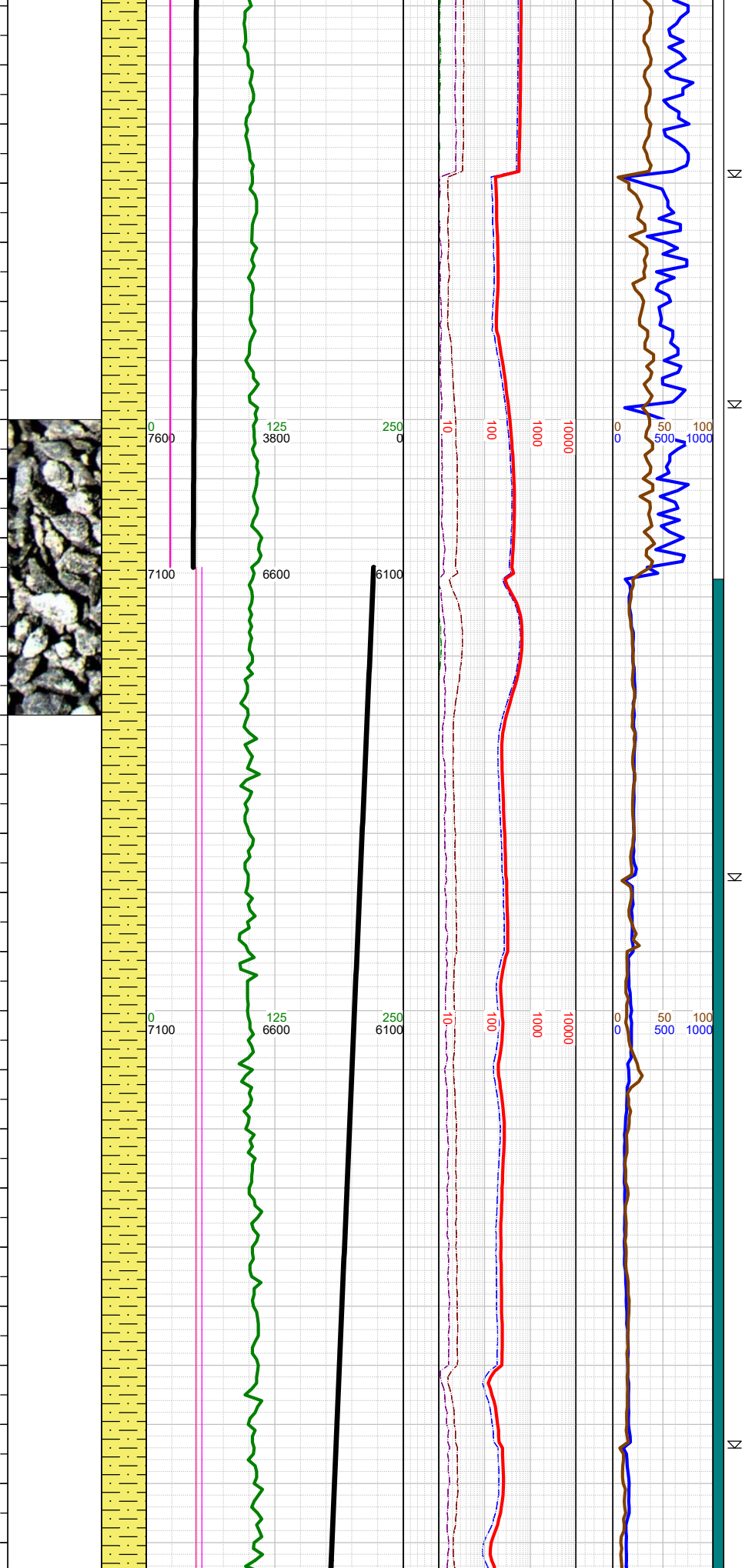
	CHALK		SHALE
	LIMESTONE		SILTY SHALE
	SHALY LIMESTONE		SHALY SILTSTONE
	MARLSTONE		SHALY SANDSTONE
	CALCAREOUS SHALE		SANDSTONE
	DOLOMITE		ANHYDRITE

FORMATION CONNECTION MIDNIGHT NEW BIT GAS SHOW FAULT

MEASURED DEPTH (FT)	PHOTOS	MUDLOGGER INTERP	GEOSTEERING INTERP		F & B	GAS	MUD VOL. 800 bbl	ROF ft/hr 1000	SLIDES SYMBOLS	COMMENTS	CUTTINGS %	SAMPLE DESCRIPTION
			Target Top / Base									
			TVD ft			Total						
			7600	0		C1						
			GAMMA api			C2						
			0	250		C3						
						C4						



-6130
-6140
-6150
-6160
-6170
-6180
-6190
-6200
-6210
-6220
-6230
-6240
-6250
-6260
-6270
-6280
-6290
-6300
-6310
-6320
-6330
-6340
-6350
-6360
-6370
-6380
-6390



TVD 6115

-6157 TOO H for agitator at 0215 hours on 5/18/2017. Resumed drilling at 0430 hours on 5/18/2017.

-6200 WT 8.8, VIS 43

-6219 INC 0.49, AZM 202.62, TVD 6210

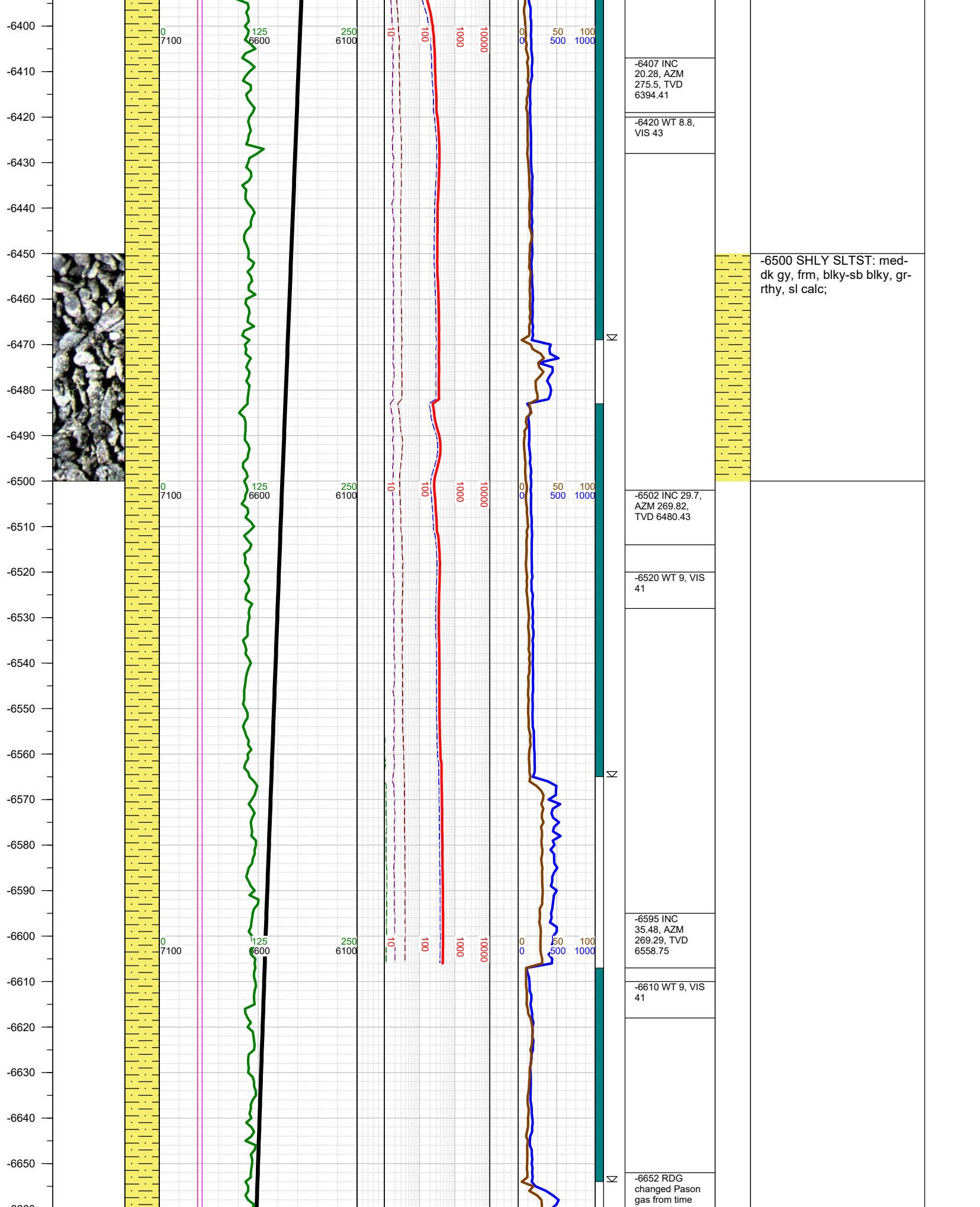
-6225 Reached KOP of 6225' MD, 6216' TVD at 0450 hrs on 5/18/2017 and immediately began drilling the curve.

-6225 Change TVD Scale

-6300 WT 8.8, VIS 43

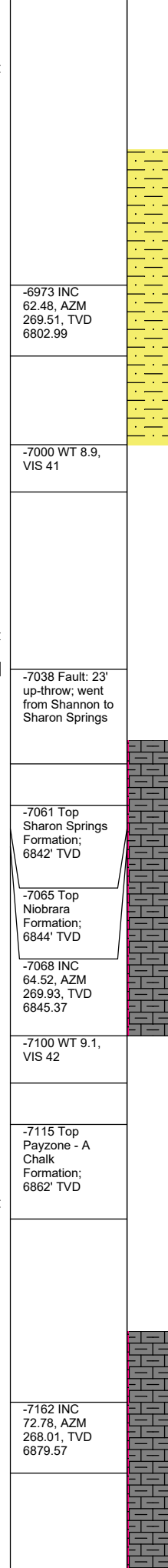
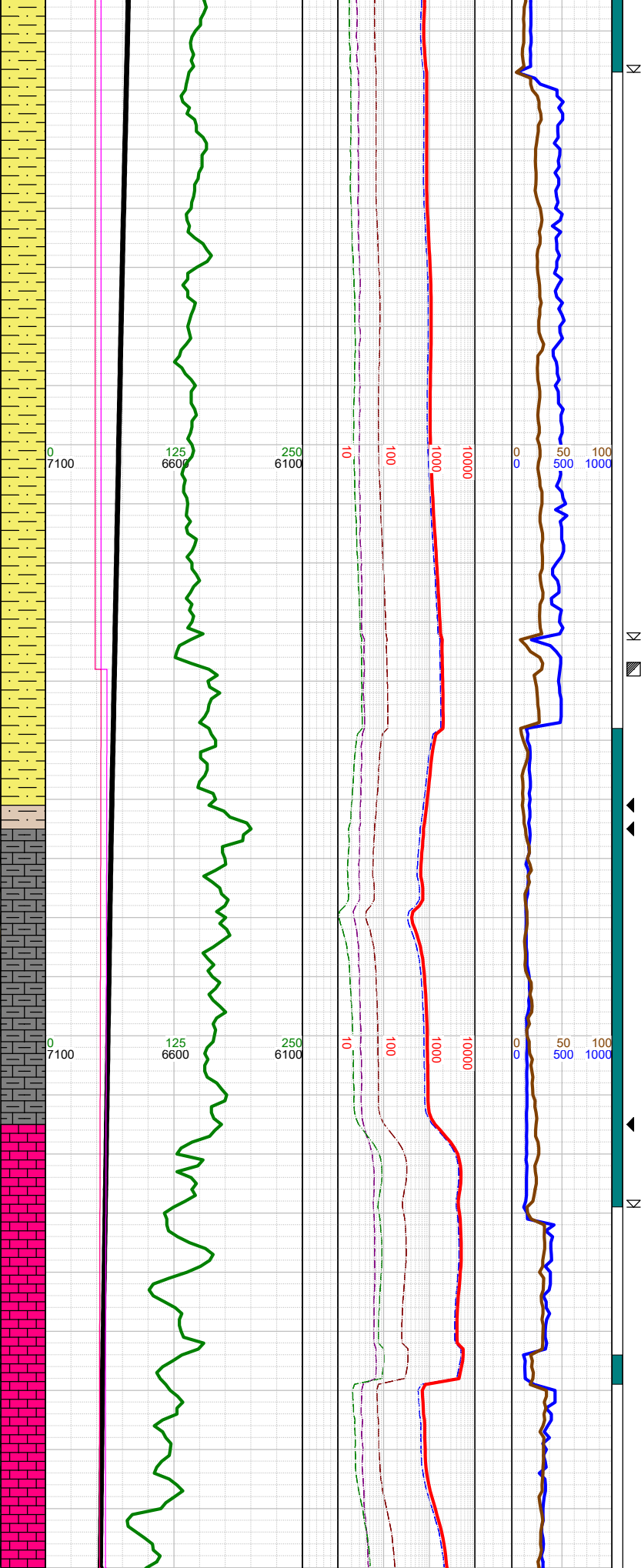
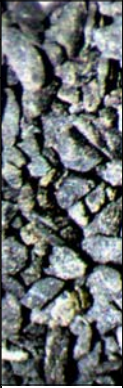
-6313 INC 9.01, AZM 275.59, TVD 6303.61

-6250 SHLY SLTST: med-dk gy, frm, blk-sb blk, gr-rthy, sl calc; SHLY SS: lt-med gy, fri, f gr, sbrnd-sbang, w srt, sl calc cmt;



-6500 SHLY SLTST: med-dk gy, frm, blk-sb blk, gr-rthy, sl calc;

-6930
-6940
-6950
-6960
-6970
-6980
-6990
-7000
-7010
-7020
-7030
-7040
-7050
-7060
-7070
-7080
-7090
-7100
-7110
-7120
-7130
-7140
-7150
-7160
-7170
-7180
7190



-7000 SHLY SLTST: med-
dk gy, frm, blk-sb blk, gr-
rthy, sl calc; SHLY SS: lt-
med gy, fri, f gr, sbrnd-
sbang, w srt, sl calc cmt; tr
bent;

-6973 INC
62.48, AZM
269.51, TVD
6802.99

-7000 WT 8.9,
VIS 41

-7038 Fault: 23'
up-throw; went
from Shannon to
Sharon Springs

-7061 Top
Sharon Springs
Formation;
6842' TVD

-7065 Top
Niobrara
Formation;
6844' TVD

-7068 INC
64.52, AZM
269.93, TVD
6845.37

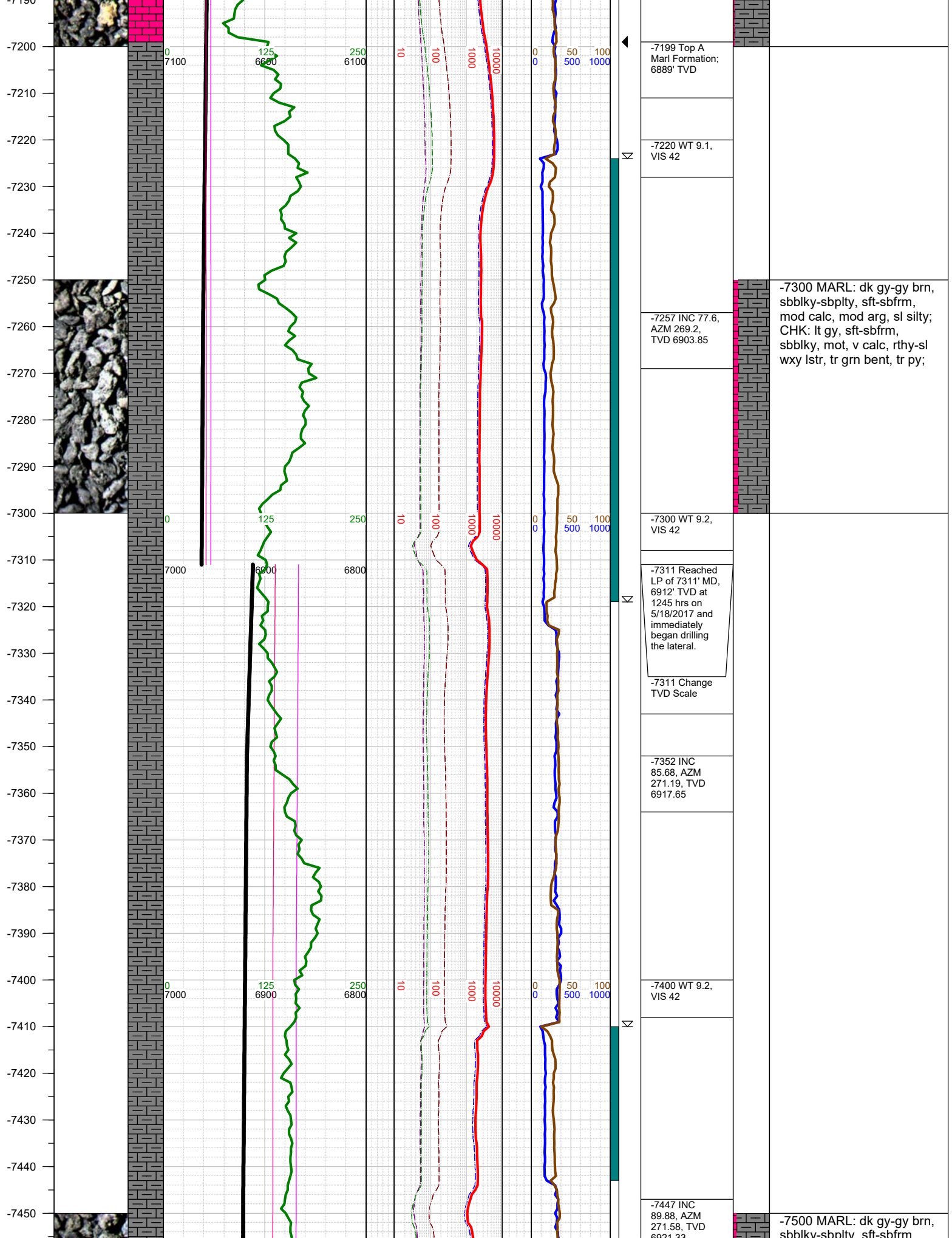
-7100 WT 9.1,
VIS 42

-7115 Top
Payzone - A
Chalk
Formation;
6862' TVD

-7100 MARL: dk gy-gy brn,
sbbkly-sbplty, sft-sbfrm,
mod calc, mod arg, sl silty;
CHK: lt gy, sft-sbfrm,
sbbkly, mot, v calc, rthy-sl
wxy lstr, mod yel bent;

-7162 INC
72.78, AZM
268.01, TVD
6879.57

-7200 MARL: dk gy-gy brn,
sbbkly-sbplty, sft-sbfrm,
mod calc, mod arg, sl silty;
CHK: lt gy, sft-sbfrm,
sbbkly, mot, v calc, rthy-sl
wxy lstr, tr grn bent, tr py;



-7199 Top A
Marl Formation;
6889' TVD

-7220 WT 9.1,
VIS 42

-7300 MARL: dk gy-gy brn,
sbbiky-sbply, sft-sbfrm,
mod calc, mod arg, sl silty;
CHK: lt gy, sft-sbfrm,
sbbiky, mot, v calc, rthy-sl
wxy lstr, tr gm bent, tr py;

-7257 INC 77.6,
AZM 269.2,
TVD 6903.85

-7300 WT 9.2,
VIS 42

-7311 Reached
LP of 7311' MD,
6912' TVD at
1245 hrs on
5/18/2017 and
immediately
began drilling
the lateral.

-7311 Change
TVD Scale

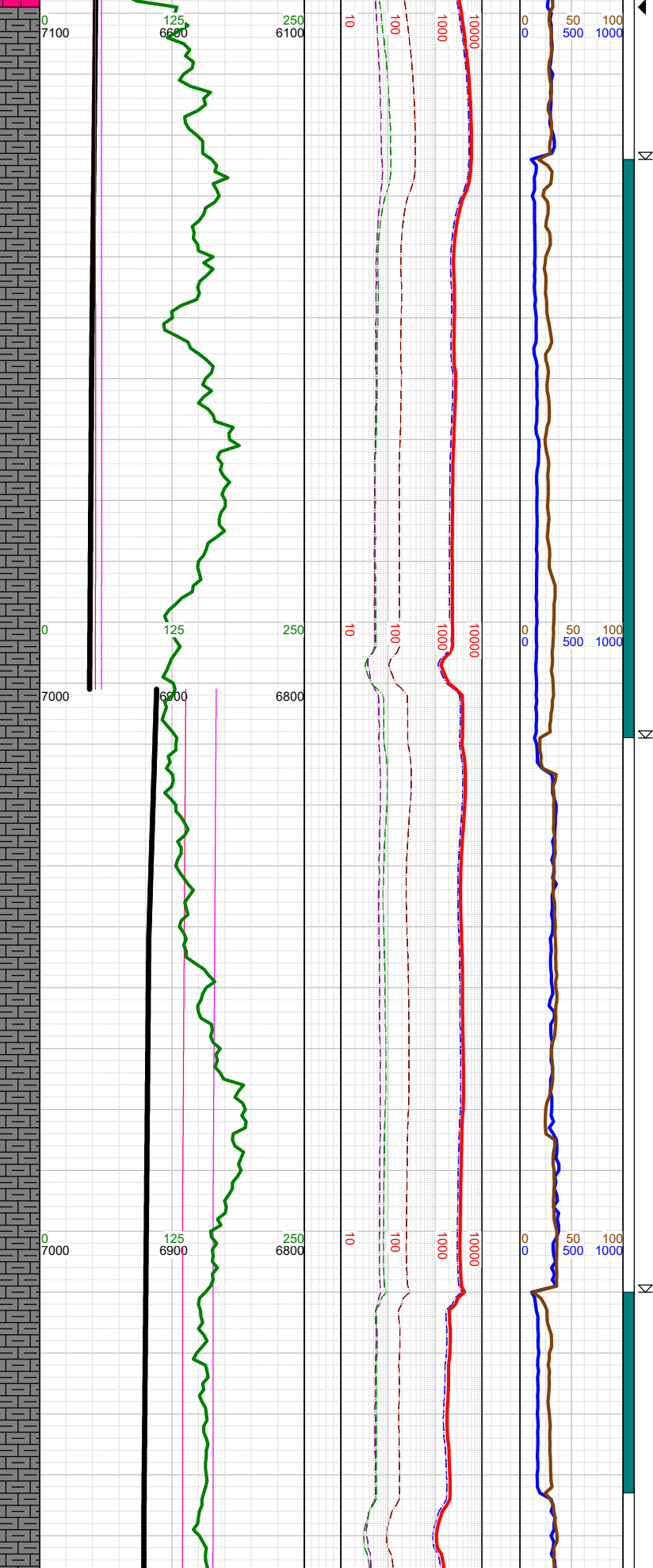
-7352 INC
85.68, AZM
271.19, TVD
6917.65

-7400 WT 9.2,
VIS 42

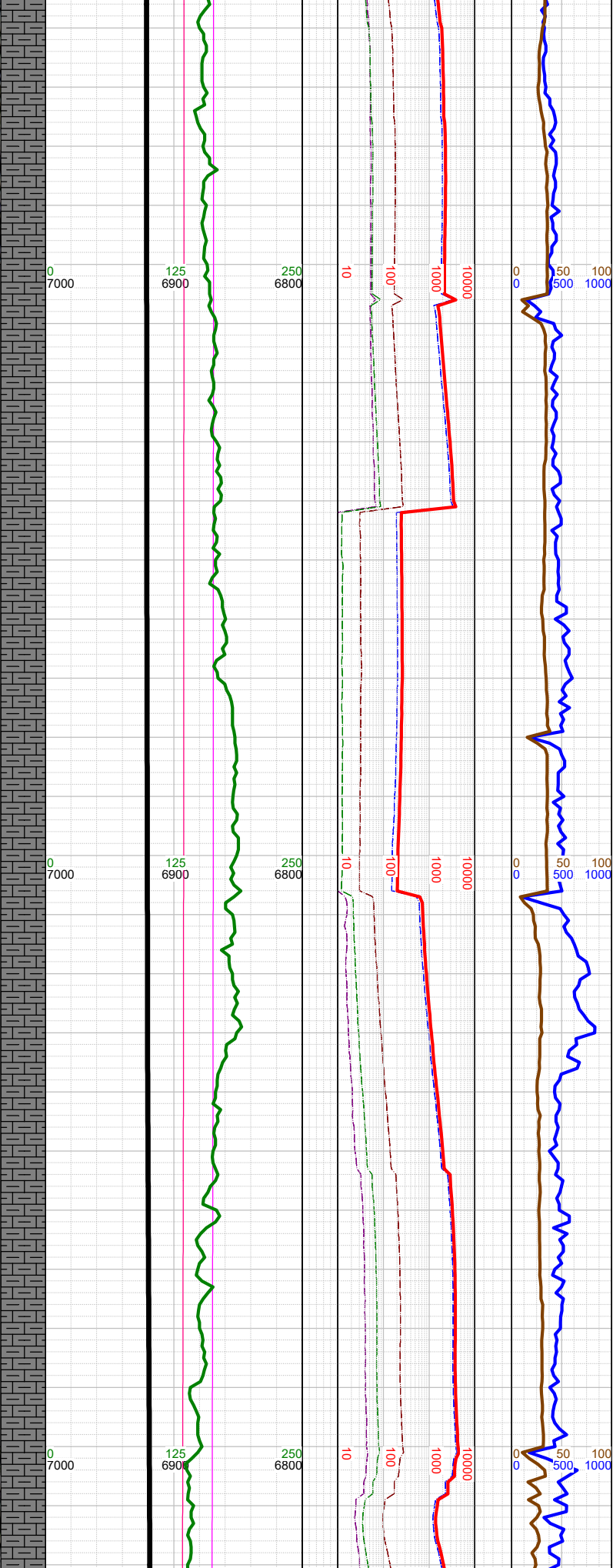
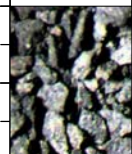
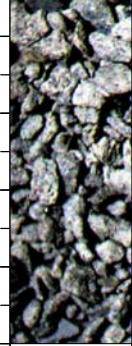
-7447 INC
89.88, AZM
271.58, TVD
6924.33

-7500 MARL: dk gy-gy brn,
sbbiky-sbply, sft-sbfrm

-7190
-7210
-7220
-7230
-7240
-7250
-7260
-7270
-7280
-7290
-7300
-7310
-7320
-7330
-7340
-7350
-7360
-7370
-7380
-7390
-7400
-7410
-7420
-7430
-7440
-7450



-7460
-7470
-7480
-7490
-7500
-7510
-7520
-7530
-7540
-7550
-7560
-7570
-7580
-7590
-7600
-7610
-7620
-7630
-7640
-7650
-7660
-7670
-7680
-7690
-7700
-7710
-7720



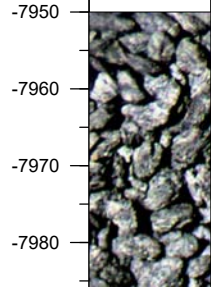
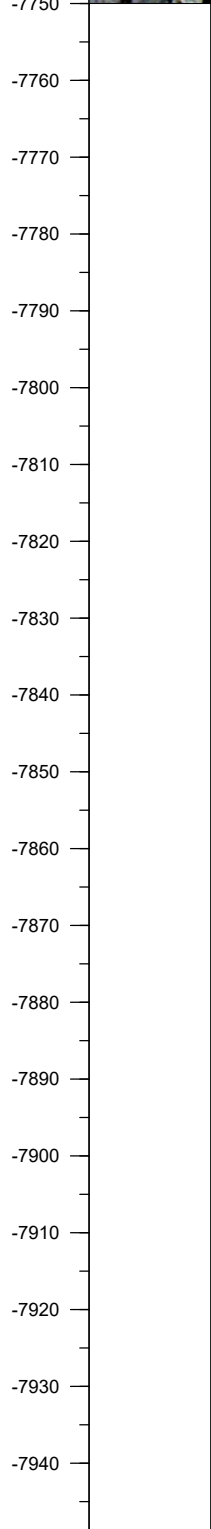
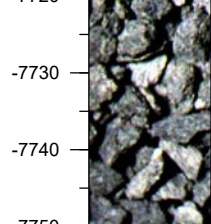
0 7000
125 6900
250 6800
10
100
1000
10000
0 0 50 100
500 1000

0 7000
125 6900
250 6800
10
100
1000
10000
0 0 50 100
500 1000

0 7000
125 690
250 6800
10
100
1000
10000
0 0 50 100
500 1000

0921.55
-7500 WT 9.3, VIS 42
-7541 INC 90.28, AZM 268.98, TVD 6921.2
-7590 WT 9.4, VIS 64
-7600 TOOH for MWD tool at 1440 hrs on 5/18/2017. Resumed drilling at 1215 hrs on 5/19/2017; Bit #2 - Reed TK59, 5x14, 8.5"
-7600 0000 hrs on 5/19/2017
-7636 INC 90.59, AZM 268.81, TVD 6920.48
-7700 WT 9.4, VIS 64

sbbly, sbpity, sft-sbfrm; mod calc, mod arg, sl silty; CHK: lt gy, sft-sbfrm, sbbly, mot, v calc, rthy-sl wxy lstr, tr grn bent, tr py;
-7750 MARL: dk gy-gy brn, sbbly-sbpity, sft-sbfrm, mod calc, mod arg, sl silty; CHK: lt gy-gy, sft-sbfrm, sbbly, mot, v calc, rthy-sl wxy lstr, tr grn bent, tr py;



-7731 INC
91.69, AZM
268.19, TVD
6918.58

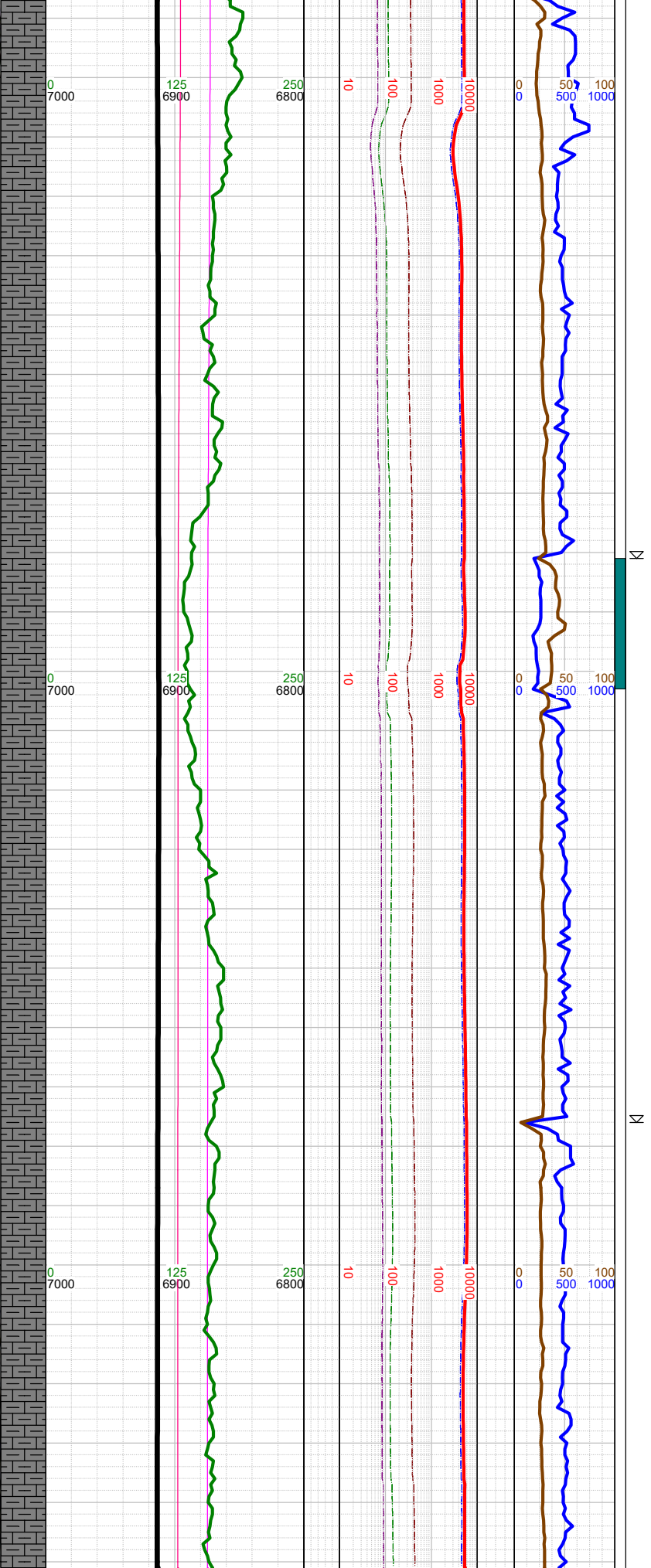
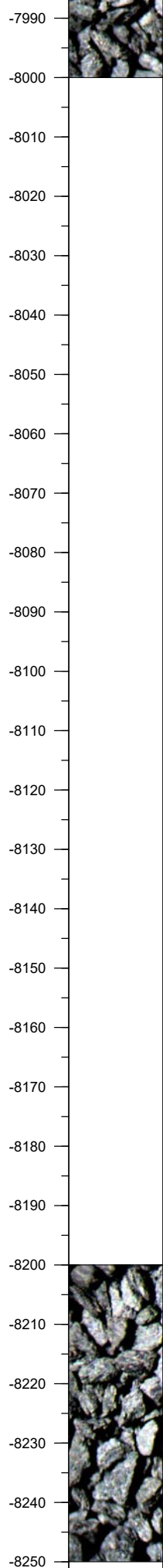
-7800 WT 9.4,
VIS 64

-7825 INC
90.72, AZM
270.79, TVD
6916.61

-7900 WT 9.4,
VIS 64

-7920 INC 90.9,
AZM 270.79,
TVD 6915.26

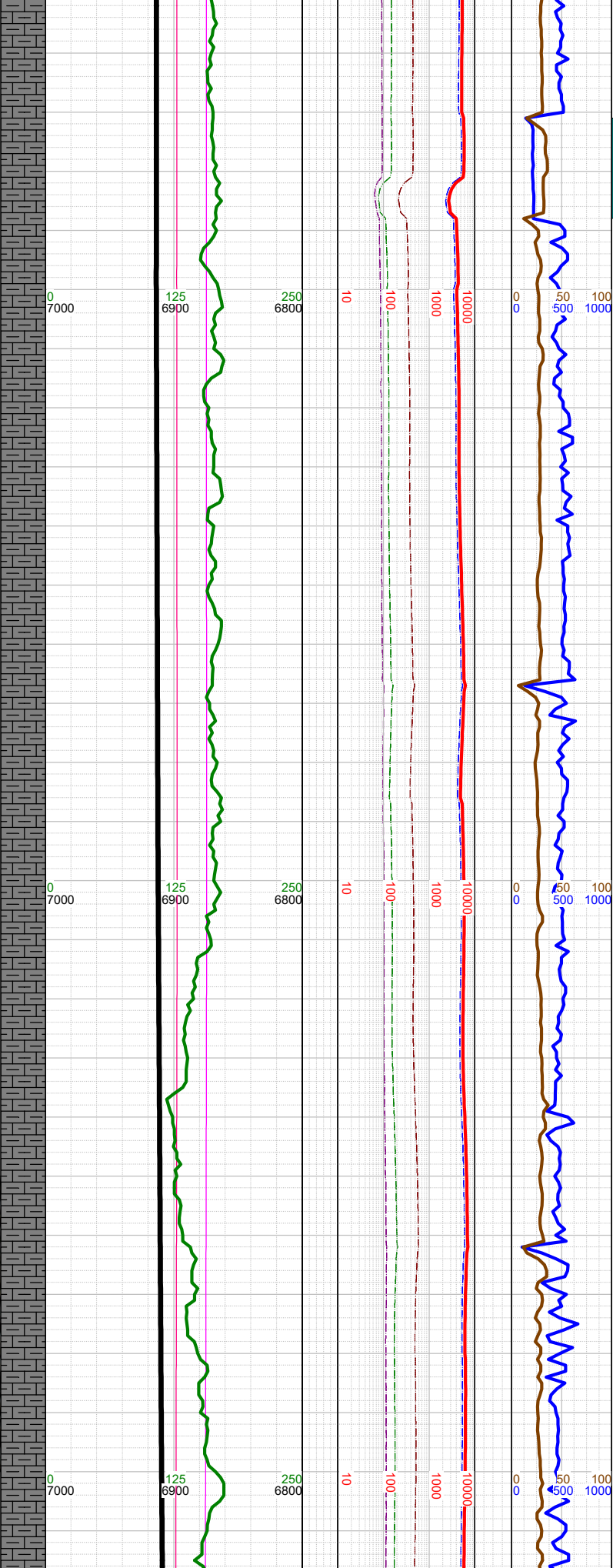
-8000 MARL: dk gy-gy brn,
sbbiky-sbply, sft-sbfrm,
mod calc, mod arg, sl silty;
CHK: lt gy-gy, sft-sbfrm,
sbbiky, mot, v calc, rthy-sl
wxy lstr, tr grn bent, tr py;



-8000 WT 9.4, VIS 64
-8015 INC 91.69, AZM 270.3, TVD 6913.12
-8100 WT 9.4, VIS 64
-8109 INC 89.22, AZM 270.48, TVD 6912.37
-8204 INC 89.4, AZM 269.91, TVD 6913.52
-8220 WT 9.4, VIS 64

-8250 MARL: dk gy-gy brn, sbblky-sbplty, sft-sbfrm, mod calc, mod arg, sl silty; CHK: lt gy-gy, sft-sbfrm, sbblky, mot, v calc, rthy-sl wxy lstr, tr grn bent, tr py;

-8260
-8270
-8280
-8290
-8300
-8310
-8320
-8330
-8340
-8350
-8360
-8370
-8380
-8390
-8400
-8410
-8420
-8430
-8440
-8450
-8460
-8470
-8480
-8490
-8500
-8510



K
K
K
K

-8299 INC
90.28, AZM
272.29, TVD
6913.78

-8320 WT 9.4,
VIS 64

-8393 INC 91.3,
AZM 272.51,
TVD 6912.48

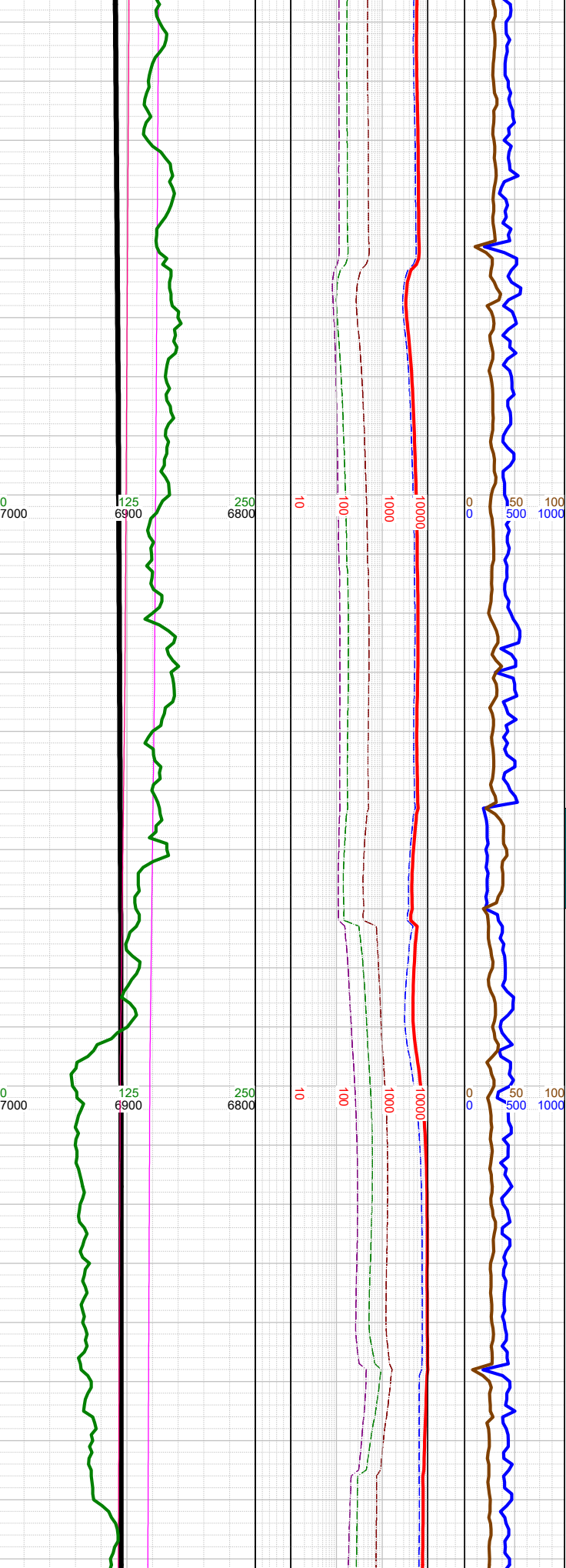
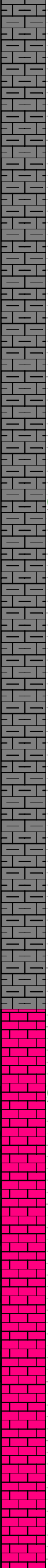
-8410 WT 9.4,
VIS 64

-8500 MARL: dk gy-gy brn,
sbbiky-sbpity, sft-sbfrm,
mod calc, mod arg, sl silty;
CHK: lt gy-gy, sft-sbfrm,
sbbiky, mot, v calc, rthy-sl
wxy lstr, tr grm bent, tr py;

-8488 INC
91.69, AZM
272.11, TVD
6910.01

-8500 WT 9.4,
VIS 64

-8520
-8530
-8540
-8550
-8560
-8570
-8580
-8590
-8600
-8610
-8620
-8630
-8640
-8650
-8660
-8670
-8680
-8690
-8700
-8710
-8720
-8730
-8740
-8750
-8760
-8770
-8780



⌵
⌵
⌵
⌵

-8583 INC
92.09, AZM
271.71, TVD
6906.87

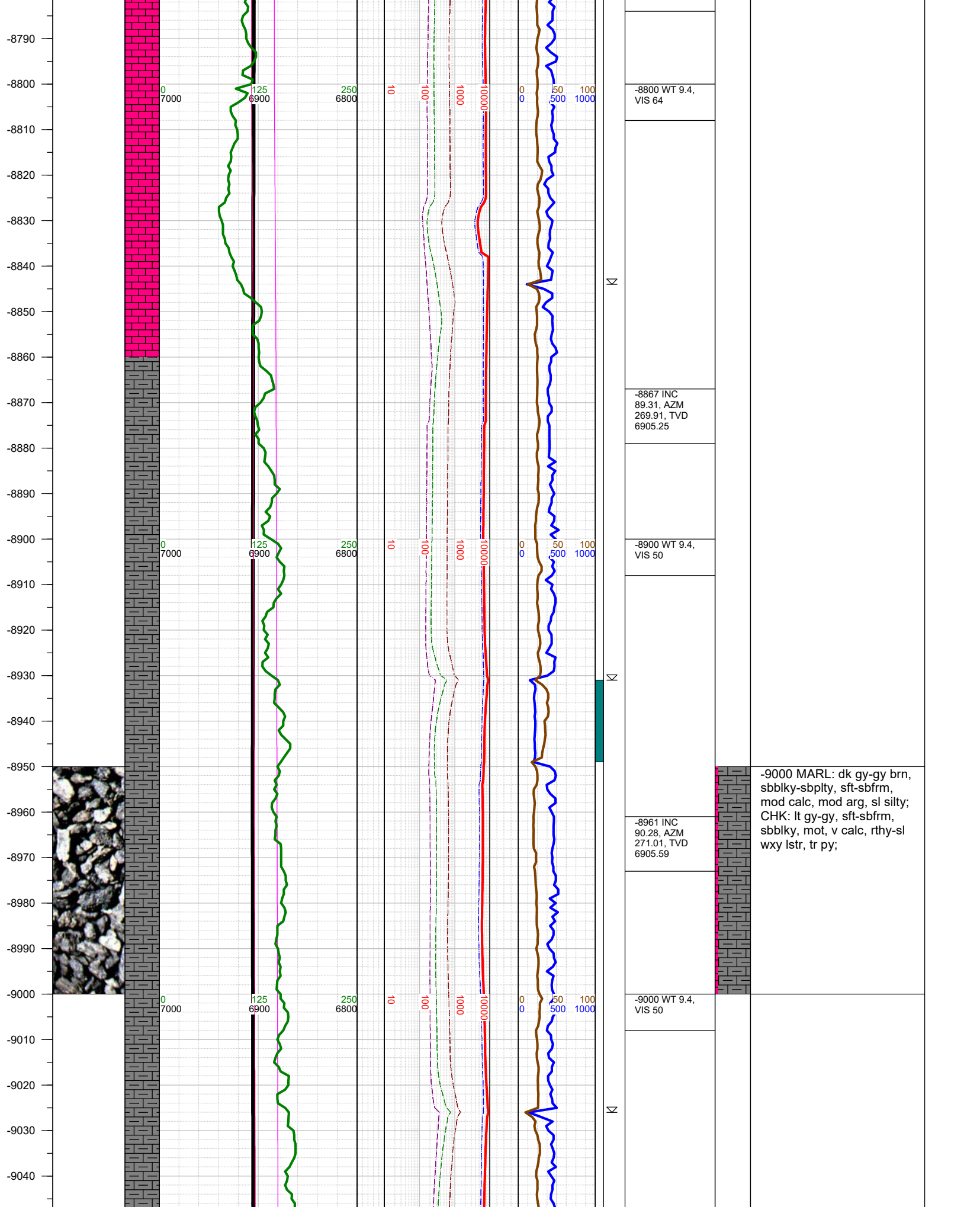
-8600 WT 9.4,
VIS 64

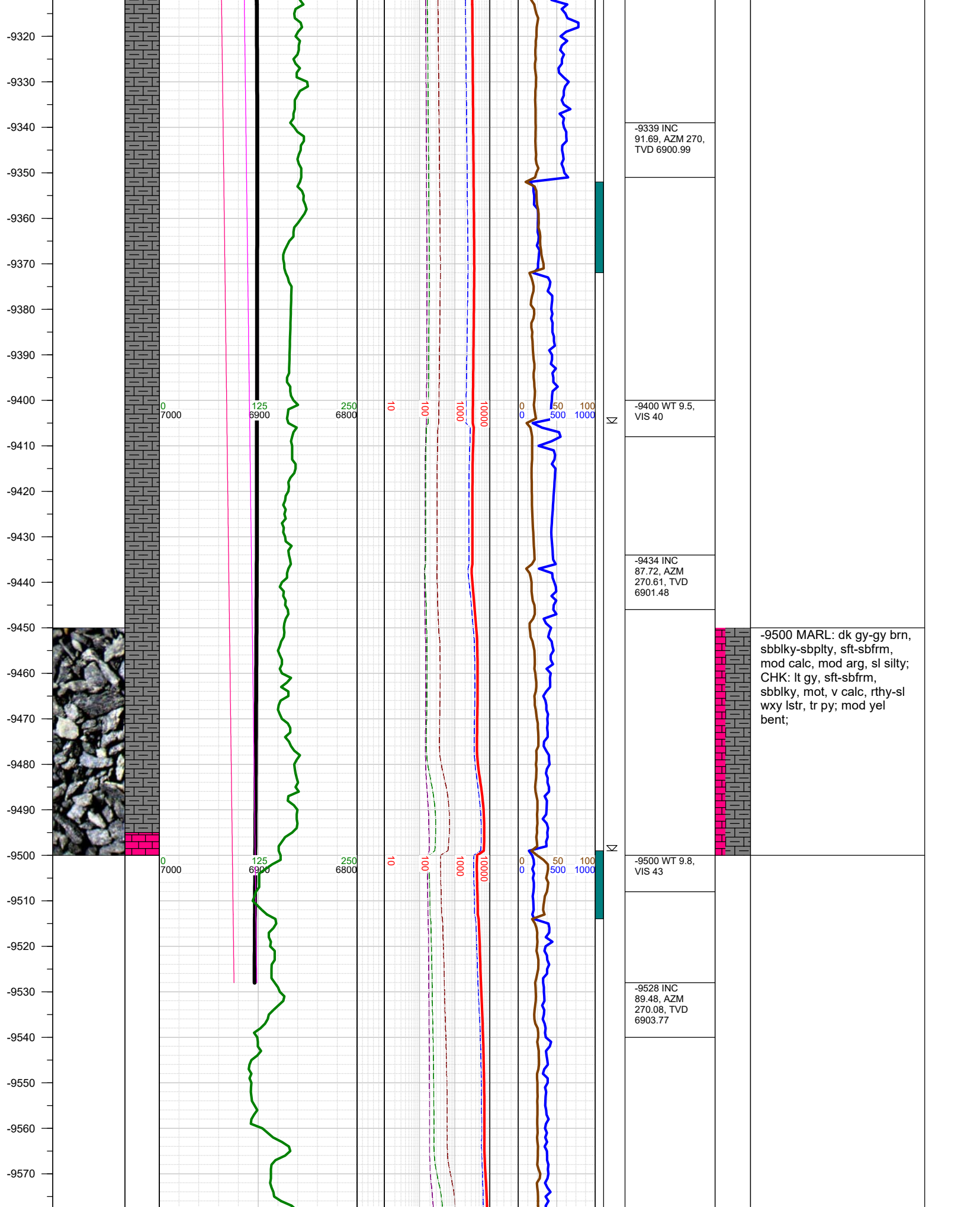
-8677 INC
90.41, AZM
270.7, TVD
6904.82

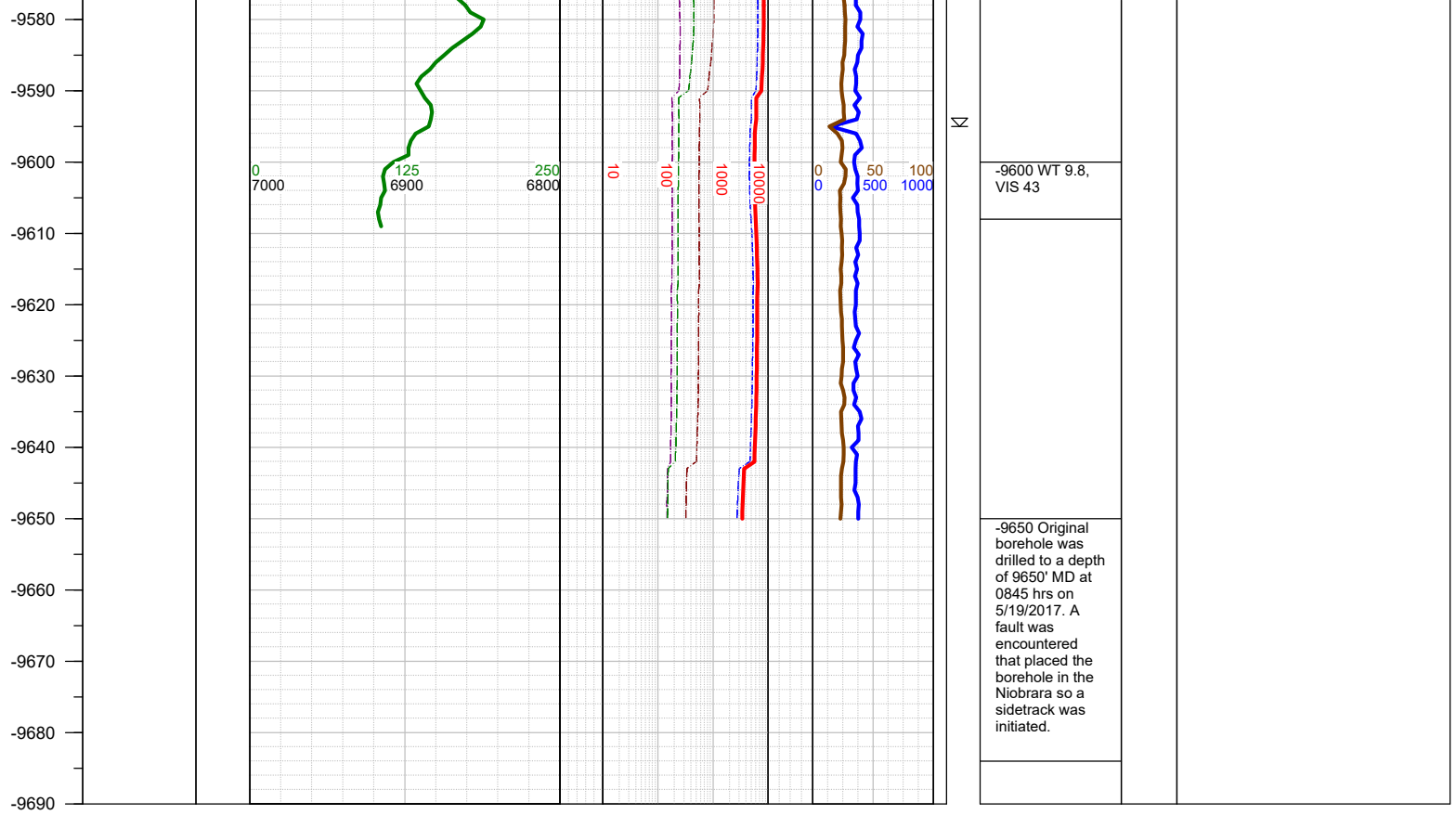
-8700 WT 9.4,
VIS 64

-8750 CHK: lt gy, sft-sbfrm,
sbbkly, mot, v calc, rthy-sl
wxy lstr; MARL: dk gy-gy
brn, sbbkly-sbplty, sft-
sbfrm, mod calc, mod arg,
sl silty; tr bent, tr py;

-8772 INC
89.88, AZM
270.3, TVD
6904.58







TOTAL DEPTH = 9650

Thank you for using Earth Science Agency