

Location:	COLORADO	Slot:	SLOT#22 DONN 5N-20C-L (918'FNL & 252'FEL, SEC.21)
Field:	WELD COUNTY (NAD83,TRUE NORTH)	Well:	DONN 5N-20C-L
Facility:	SEC.21-T06N-R66W	Wellbore:	DONN 5N-20C-L PWB

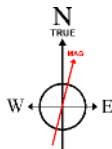
Plot reference wellpath is DONN 5N-20C-L.PWP (REV-B.0)	Grid System: NAD83 / Lambert Colorado SP, Northern Zone (501), US feet
True vertical depths are referenced to PRECISION DRILLING (25) (RKB)	North Reference: True north
Measured depths are referenced to PRECISION DRILLING (25) (RKB)	Scale: True distance
PRECISION DRILLING (25) (RKB) to Mean Sea Level: 4777 feet	Depths are in feet
Mean Sea Level to Mud line (At Slot: SLOT#22 DONN 5N-20C-L (918'FNL & 252'FEL, SEC.21)): 0 feet	Created by: doddanna on 2017-08-25
Coordinates are in feet referenced to Slot	Database: Denver DB

Facility Name			Grid East (US ft)	Grid North (US ft)	Latitude	Longitude
SEC 21-T06N-R66W			3201871.604	1417148.268	40°28'34.342"N	104°46'27.660"W
Slot	Local N (ft)	Local E (ft)	Grid East (US ft)	Grid North (US ft)	Latitude	Longitude
SLOT#22 DONN N-20C-L (918FNL & 25ZFEL, SEC.21)	883.79	23.65	3201888.017	1418032.192	40°28'43.075"N	104°46'27.354"W
PRECISION DRILLING (25) (RKB) to Mud line (At Slot: SLOT#22 DONN N-20C-L (918FNL & 25ZFEL, SEC.21))					4777ft	
Mean Sea Level to Mud line (At Slot: SLOT#22 DONN N-20C-L (918FNL & 25ZFEL, SEC.21))					0ft	
PRECISION DRILLING (25) (RKB) to Mean Sea Level					4777ft	

Start MD (ft)	End MD (ft)	Tool	Model	Log Name/Comment	Wellbore
25.00	1750.00	BHI NavTrak	Custom BHI NavTrak (IFR1, Standard Rotating-Axial Core) (Rockies 0.03Gt model)		DONN 5N-20C-L PWB
1750.00	17876.07	BHI AutoTrak Curve	Custom BHI AutoTrak Curve (IFR1, Short) (Rockies 0.03Gt model)		DONN 5N-20C-L PWB

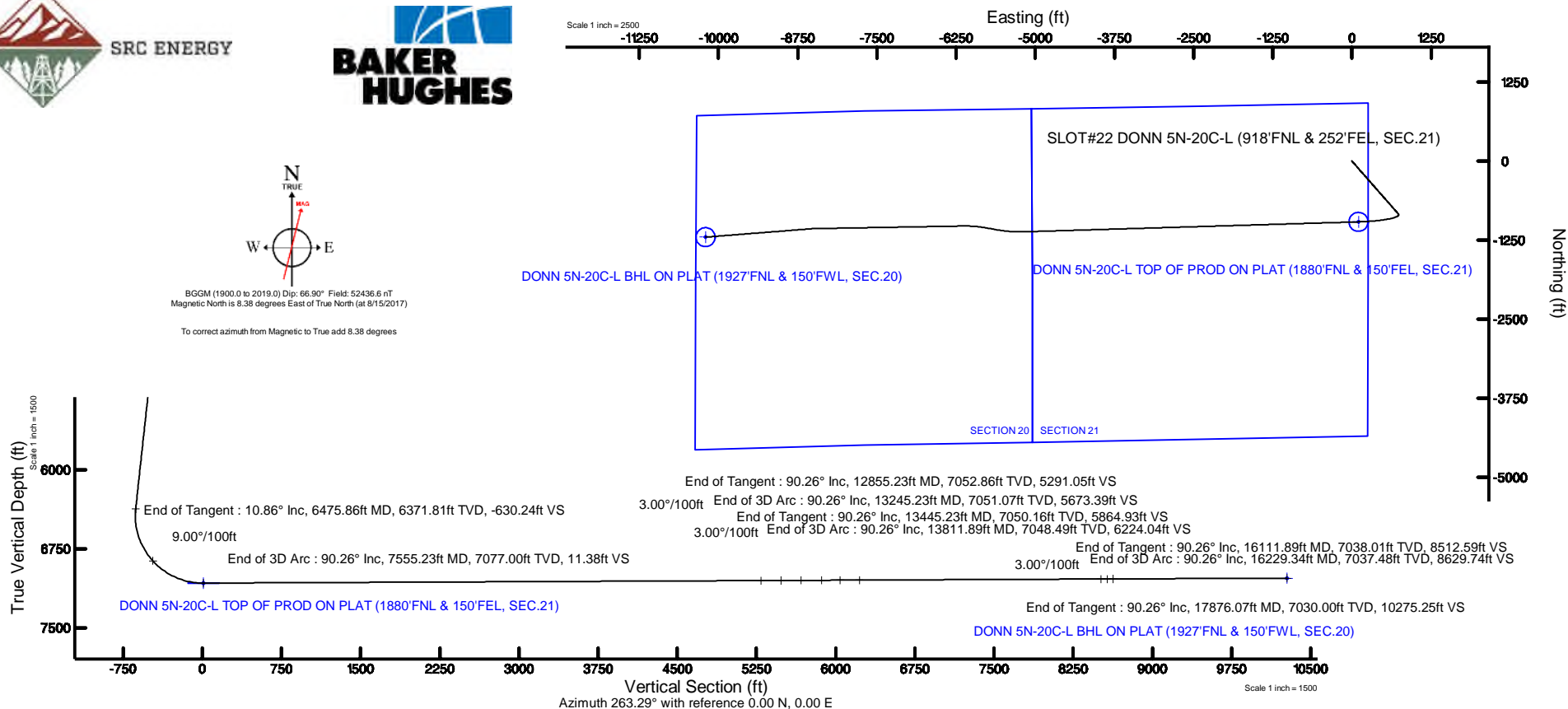


**BAKER
HUGHES**



BGGM (1900.0 to 2019.0) Dip: 66.90° Field: 52436.6 nT
Magnetic North is 8.38 degrees East of True North (at 8/15/2017)

To correct azimuth from Magnetic to True add 8.38 degrees



~VERSION INFORMATION

VERS. 2.0 : CWLS LOG ASCII STANDARD-VERSION 2.0

WRAP. NO : ASCII DATA SECTION CONTAINS ONE ROW PER WELLPATH STATION

~WELL INFORMATION

#MNEM	.UNITS	DATA	:DESCRIPTION
#----	.-----	----	:-----
STRT	.ft	0.00	:START MD
STOP	.ft	17876.07	:STOP MD
STEP	.ft	0.0	:STEP (non-uniform increment)
NULL	.	-999.99	:NULL
COMP	.	SRC ENERGY	:OPERATOR
WELL	.	DONN 5N-20C-L	:WELL
FLD	.	WELD COUNTY (NAD83,TRUE NORTH)	:FIELD
LOC	.	COLORADO	:AREA (aka: Location)
CNTY	.	N/A	:COUNTY
STAT	.	N/A	:STATE
CTRY	.	N/A	:COUNTRY
SRVC	.	Baker Hughes	:CONTRACTOR
DATE	.	08/17/2017	:LOG REV DATE
API	.		:API NUMBER

~OTHER INFORMATION

#Software: WellArchitect(R) Version 5.1

#MNEM	.UNITS	DATA	:DESCRIPTION
#----	.-----	----	:-----
WPTYPE	.	PLANNED WELLPATH	:WELLPATH TYPE
FACILITY	.	SEC.21-T06N-R66W	:FACILITY
SLOT	.	SLOT#22 DONN 5N-20C-L (918'FNL & 252'FEL, SEC.21)	:SLOT
WELLBORE	.	DONN 5N-20C-L PWB	:WELLBORE
WELLPATH	.	DONN 5N-20C-L PWP (REV-B.0)	:WELLPATH
MDREFPT	.	PRECISION DRILLING (25') (RKB)	:MD REFERENCE POINT
TVDREFPT	.	PRECISION DRILLING (25') (RKB)	:TVD REFERENCE POINT
LCLREFPT	.	Slot	:LOCAL COORDINATE
REFERENCE PT			
VSAZIMUTH.deg		263.29	:VERTICAL SECTION
AZIMUTH			
VSORIGN .ft		0.00	:VERTICAL SECTION
ORIGIN NORTH			
VSORIGE .ft		0.00	:VERTICAL SECTION
ORIGIN EAST			

~CURVE (WELLPATH) INFORMATION

#MNEM	.UNITS	:DESCRIPTION
#----	.-----	:-----
DEPT	.ft	:MEASURED DEPTH
INC	.deg	:INCLINATION
AZI	.deg	:AZIMUTH
TVD	.ft	:TRUE VERTICAL DEPTH
SECT	.ft	:CROSS SECTION (CURTAIN/VERTICAL)
LOCALN	.ft	:LOCAL NORTH

DONN_5N-20C-L_PWP__REV-B.0_.las

LOCALE .ft :LOCAL EAST
 LAT .deg :LATITUDE
 LONG .deg :LONGITUDE
 DLS .deg/100ft :DOGLEG SEVERITY

~ASCII DATA

0.00	0.00	138.77	0.00	0.00	0.00	0.00	40.4786320
-104.7742650	0.00						
25.00	0.00	138.77	25.00	0.00	0.00	0.00	40.4786320
-104.7742650	0.00						
125.00	0.00	138.77	125.00	0.00	0.00	0.00	40.4786320
-104.7742650	0.00						
225.00	0.00	138.77	225.00	0.00	0.00	0.00	40.4786320
-104.7742650	0.00						
300.00	0.00	138.77	300.00	0.00	0.00	0.00	40.4786320
-104.7742650	0.00						
325.00	0.50	138.77	325.00	-0.06	-0.08	0.07	40.4786318
-104.7742647	2.00						
425.00	2.50	138.77	424.96	-1.55	-2.05	1.80	40.4786264
-104.7742585	2.00						
525.00	4.50	138.77	524.77	-5.00	-6.64	5.82	40.4786138
-104.7742441	2.00						
625.00	6.50	138.77	624.30	-10.44	-13.85	12.14	40.4785940
-104.7742214	2.00						
725.00	8.50	138.77	723.44	-17.83	-23.66	20.74	40.4785670
-104.7741904	2.00						
825.00	10.50	138.77	822.07	-27.18	-36.08	31.62	40.4785330
-104.7741513	2.00						
842.79	10.86	138.77	839.55	-29.05	-38.56	33.79	40.4785262
-104.7741435	2.00						
925.00	10.86	138.77	920.29	-37.83	-50.20	44.00	40.4784942
-104.7741069	0.00						
1025.00	10.86	138.77	1018.50	-48.50	-64.36	56.41	40.4784553
-104.7740622	0.00						
1125.00	10.86	138.77	1116.71	-59.17	-78.53	68.82	40.4784165
-104.7740176	0.00						
1225.00	10.86	138.77	1214.92	-69.84	-92.69	81.24	40.4783776
-104.7739730	0.00						
1325.00	10.86	138.77	1313.13	-80.52	-106.86	93.65	40.4783387
-104.7739284	0.00						
1425.00	10.86	138.77	1411.34	-91.19	-121.02	106.06	40.4782998
-104.7738837	0.00						
1525.00	10.86	138.77	1509.55	-101.86	-135.18	118.48	40.4782609
-104.7738391	0.00						
1625.00	10.86	138.77	1607.76	-112.53	-149.35	130.89	40.4782221
-104.7737945	0.00						
1725.00	10.86	138.77	1705.97	-123.21	-163.51	143.30	40.4781832
-104.7737499	0.00						
1825.00	10.86	138.77	1804.18	-133.88	-177.67	155.72	40.4781443
-104.7737053	0.00						
1925.00	10.86	138.77	1902.39	-144.55	-191.84	168.13	40.4781054
-104.7736606	0.00						

DONN_5N-20C-L_PWP__REV-B.0_.las

2025.00	10.86	138.77	2000.60	-155.22	-206.00	180.55	40.4780665
-104.7736160	0.00						
2125.00	10.86	138.77	2098.81	-165.90	-220.17	192.96	40.4780277
-104.7735714	0.00						
2225.00	10.86	138.77	2197.02	-176.57	-234.33	205.37	40.4779888
-104.7735268	0.00						
2325.00	10.86	138.77	2295.23	-187.24	-248.49	217.79	40.4779499
-104.7734822	0.00						
2425.00	10.86	138.77	2393.44	-197.91	-262.66	230.20	40.4779110
-104.7734375	0.00						
2525.00	10.86	138.77	2491.65	-208.59	-276.82	242.61	40.4778722
-104.7733929	0.00						
2625.00	10.86	138.77	2589.86	-219.26	-290.99	255.03	40.4778333
-104.7733483	0.00						
2725.00	10.86	138.77	2688.07	-229.93	-305.15	267.44	40.4777944
-104.7733037	0.00						
2825.00	10.86	138.77	2786.29	-240.60	-319.31	279.85	40.4777555
-104.7732591	0.00						
2925.00	10.86	138.77	2884.50	-251.28	-333.48	292.27	40.4777166
-104.7732144	0.00						
3025.00	10.86	138.77	2982.71	-261.95	-347.64	304.68	40.4776778
-104.7731698	0.00						
3125.00	10.86	138.77	3080.92	-272.62	-361.81	317.09	40.4776389
-104.7731252	0.00						
3225.00	10.86	138.77	3179.13	-283.29	-375.97	329.51	40.4776000
-104.7730806	0.00						
3325.00	10.86	138.77	3277.34	-293.97	-390.13	341.92	40.4775611
-104.7730360	0.00						
3425.00	10.86	138.77	3375.55	-304.64	-404.30	354.33	40.4775223
-104.7729913	0.00						
3525.00	10.86	138.77	3473.76	-315.31	-418.46	366.75	40.4774834
-104.7729467	0.00						
3625.00	10.86	138.77	3571.97	-325.98	-432.63	379.16	40.4774445
-104.7729021	0.00						
3725.00	10.86	138.77	3670.18	-336.66	-446.79	391.58	40.4774056
-104.7728575	0.00						
3825.00	10.86	138.77	3768.39	-347.33	-460.95	403.99	40.4773667
-104.7728129	0.00						
3925.00	10.86	138.77	3866.60	-358.00	-475.12	416.40	40.4773279
-104.7727682	0.00						
4025.00	10.86	138.77	3964.81	-368.67	-489.28	428.82	40.4772890
-104.7727236	0.00						
4125.00	10.86	138.77	4063.02	-379.35	-503.44	441.23	40.4772501
-104.7726790	0.00						
4225.00	10.86	138.77	4161.23	-390.02	-517.61	453.64	40.4772112
-104.7726344	0.00						
4325.00	10.86	138.77	4259.44	-400.69	-531.77	466.06	40.4771723
-104.7725898	0.00						
4425.00	10.86	138.77	4357.65	-411.36	-545.94	478.47	40.4771335
-104.7725451	0.00						
4525.00	10.86	138.77	4455.86	-422.04	-560.10	490.88	40.4770946
-104.7725005	0.00						

DONN_5N-20C-L_PWP__REV-B.0_.las

4625.00	10.86	138.77	4554.07	-432.71	-574.26	503.30	40.4770557
-104.7724559	0.00						
4725.00	10.86	138.77	4652.28	-443.38	-588.43	515.71	40.4770168
-104.7724113	0.00						
4825.00	10.86	138.77	4750.49	-454.05	-602.59	528.12	40.4769780
-104.7723667	0.00						
4925.00	10.86	138.77	4848.70	-464.73	-616.76	540.54	40.4769391
-104.7723220	0.00						
5025.00	10.86	138.77	4946.91	-475.40	-630.92	552.95	40.4769002
-104.7722774	0.00						
5125.00	10.86	138.77	5045.12	-486.07	-645.08	565.37	40.4768613
-104.7722328	0.00						
5225.00	10.86	138.77	5143.34	-496.74	-659.25	577.78	40.4768224
-104.7721882	0.00						
5325.00	10.86	138.77	5241.55	-507.42	-673.41	590.19	40.4767836
-104.7721436	0.00						
5425.00	10.86	138.77	5339.76	-518.09	-687.58	602.61	40.4767447
-104.7720990	0.00						
5525.00	10.86	138.77	5437.97	-528.76	-701.74	615.02	40.4767058
-104.7720543	0.00						
5625.00	10.86	138.77	5536.18	-539.44	-715.90	627.43	40.4766669
-104.7720097	0.00						
5725.00	10.86	138.77	5634.39	-550.11	-730.07	639.85	40.4766280
-104.7719651	0.00						
5825.00	10.86	138.77	5732.60	-560.78	-744.23	652.26	40.4765892
-104.7719205	0.00						
5925.00	10.86	138.77	5830.81	-571.45	-758.39	664.67	40.4765503
-104.7718759	0.00						
6025.00	10.86	138.77	5929.02	-582.13	-772.56	677.09	40.4765114
-104.7718312	0.00						
6125.00	10.86	138.77	6027.23	-592.80	-786.72	689.50	40.4764725
-104.7717866	0.00						
6225.00	10.86	138.77	6125.44	-603.47	-800.89	701.91	40.4764336
-104.7717420	0.00						
6325.00	10.86	138.77	6223.65	-614.14	-815.05	714.33	40.4763948
-104.7716974	0.00						
6425.00	10.86	138.77	6321.86	-624.82	-829.21	726.74	40.4763559
-104.7716528	0.00						
6475.86	10.86	138.77	6371.81	-630.24	-836.42	733.06	40.4763361
-104.7716301	0.00						
6525.00	8.77	161.93	6420.25	-633.61	-843.46	737.27	40.4763168
-104.7716149	9.00						
6625.00	10.65	216.34	6519.01	-628.79	-858.18	734.15	40.4762764
-104.7716261	9.00						
6725.00	17.63	240.50	6616.00	-608.48	-873.11	715.46	40.4762354
-104.7716933	9.00						
6825.00	25.86	250.49	6708.83	-573.18	-887.88	681.66	40.4761949
-104.7718148	9.00						
6925.00	34.46	255.81	6795.23	-523.76	-902.13	633.57	40.4761558
-104.7719877	9.00						
7025.00	43.21	259.20	6873.05	-461.43	-915.51	572.39	40.4761190
-104.7722076	9.00						

DONN_5N-20C-L_PWP__REV-B.0_.las

7125.00	52.03	261.63	6940.40	-387.73	-927.69	499.61	40.4760856
-104.7724692	9.00						
7225.00	60.89	263.54	6995.59	-304.47	-938.37	417.04	40.4760563
-104.7727660	9.00						
7325.00	69.77	265.14	7037.29	-213.71	-947.28	326.70	40.4760318
-104.7730907	9.00						
7425.00	78.67	266.56	7064.46	-117.68	-954.21	230.82	40.4760128
-104.7734353	9.00						
7525.00	87.57	267.90	7076.43	-18.73	-958.99	131.75	40.4759997
-104.7737914	9.00						
7555.23	90.26	268.30	7077.00	11.38	-960.00	101.55	40.4759969
-104.7739000	9.00						
7625.00	90.26	268.30	7076.68	80.88	-962.06	31.81	40.4759913
-104.7741507	0.00						
7725.00	90.26	268.30	7076.23	180.50	-965.03	-68.15	40.4759831
-104.7745099	0.00						
7825.00	90.26	268.30	7075.77	280.12	-968.00	-168.10	40.4759750
-104.7748692	0.00						
7925.00	90.26	268.30	7075.32	379.73	-970.96	-268.06	40.4759668
-104.7752285	0.00						
8025.00	90.26	268.30	7074.86	479.35	-973.93	-368.01	40.4759587
-104.7755878	0.00						
8125.00	90.26	268.30	7074.40	578.96	-976.90	-467.97	40.4759505
-104.7759471	0.00						
8225.00	90.26	268.30	7073.95	678.58	-979.86	-567.92	40.4759424
-104.7763063	0.00						
8325.00	90.26	268.30	7073.49	778.20	-982.83	-667.87	40.4759342
-104.7766656	0.00						
8425.00	90.26	268.30	7073.04	877.81	-985.80	-767.83	40.4759261
-104.7770249	0.00						
8525.00	90.26	268.30	7072.58	977.43	-988.76	-867.78	40.4759179
-104.7773842	0.00						
8625.00	90.26	268.30	7072.13	1077.05	-991.73	-967.74	40.4759098
-104.7777435	0.00						
8725.00	90.26	268.30	7071.67	1176.66	-994.70	-1067.69	40.4759016
-104.7781027	0.00						
8825.00	90.26	268.30	7071.22	1276.28	-997.66	-1167.65	40.4758935
-104.7784620	0.00						
8925.00	90.26	268.30	7070.76	1375.89	-1000.63	-1267.60	40.4758853
-104.7788213	0.00						
9025.00	90.26	268.30	7070.30	1475.51	-1003.60	-1367.56	40.4758772
-104.7791806	0.00						
9125.00	90.26	268.30	7069.85	1575.13	-1006.56	-1467.51	40.4758690
-104.7795399	0.00						
9225.00	90.26	268.30	7069.39	1674.74	-1009.53	-1567.47	40.4758608
-104.7798991	0.00						
9325.00	90.26	268.30	7068.94	1774.36	-1012.50	-1667.42	40.4758527
-104.7802584	0.00						
9425.00	90.26	268.30	7068.48	1873.98	-1015.46	-1767.38	40.4758445
-104.7806177	0.00						
9525.00	90.26	268.30	7068.03	1973.59	-1018.43	-1867.33	40.4758364
-104.7809770	0.00						

DONN_5N-20C-L_PWP__REV-B.0_.las

9625.00	90.26	268.30	7067.57	2073.21	-1021.40	-1967.29	40.4758282
-104.7813363	0.00						
9725.00	90.26	268.30	7067.12	2172.83	-1024.36	-2067.24	40.4758200
-104.7816955	0.00						
9825.00	90.26	268.30	7066.66	2272.44	-1027.33	-2167.20	40.4758119
-104.7820548	0.00						
9925.00	90.26	268.30	7066.21	2372.06	-1030.30	-2267.15	40.4758037
-104.7824141	0.00						
10025.00	90.26	268.30	7065.75	2471.67	-1033.26	-2367.11	40.4757955
-104.7827734	0.00						
10125.00	90.26	268.30	7065.29	2571.29	-1036.23	-2467.06	40.4757874
-104.7831327	0.00						
10225.00	90.26	268.30	7064.84	2670.91	-1039.20	-2567.02	40.4757792
-104.7834919	0.00						
10325.00	90.26	268.30	7064.38	2770.52	-1042.16	-2666.97	40.4757710
-104.7838512	0.00						
10425.00	90.26	268.30	7063.93	2870.14	-1045.13	-2766.93	40.4757628
-104.7842105	0.00						
10525.00	90.26	268.30	7063.47	2969.76	-1048.10	-2866.88	40.4757547
-104.7845698	0.00						
10625.00	90.26	268.30	7063.02	3069.37	-1051.06	-2966.84	40.4757465
-104.7849290	0.00						
10725.00	90.26	268.30	7062.56	3168.99	-1054.03	-3066.79	40.4757383
-104.7852883	0.00						
10825.00	90.26	268.30	7062.11	3268.61	-1057.00	-3166.75	40.4757301
-104.7856476	0.00						
10925.00	90.26	268.30	7061.65	3368.22	-1059.96	-3266.70	40.4757220
-104.7860069	0.00						
11025.00	90.26	268.30	7061.19	3467.84	-1062.93	-3366.66	40.4757138
-104.7863662	0.00						
11125.00	90.26	268.30	7060.74	3567.45	-1065.90	-3466.61	40.4757056
-104.7867254	0.00						
11225.00	90.26	268.30	7060.28	3667.07	-1068.86	-3566.57	40.4756974
-104.7870847	0.00						
11325.00	90.26	268.30	7059.83	3766.69	-1071.83	-3666.52	40.4756892
-104.7874440	0.00						
11425.00	90.26	268.30	7059.37	3866.30	-1074.80	-3766.48	40.4756810
-104.7878033	0.00						
11525.00	90.26	268.30	7058.92	3965.92	-1077.76	-3866.43	40.4756729
-104.7881625	0.00						
11625.00	90.26	268.30	7058.46	4065.54	-1080.73	-3966.39	40.4756647
-104.7885218	0.00						
11725.00	90.26	268.30	7058.01	4165.15	-1083.70	-4066.34	40.4756565
-104.7888811	0.00						
11825.00	90.26	268.30	7057.55	4264.77	-1086.66	-4166.30	40.4756483
-104.7892404	0.00						
11925.00	90.26	268.30	7057.09	4364.39	-1089.63	-4266.25	40.4756401
-104.7895997	0.00						
12025.00	90.26	268.30	7056.64	4464.00	-1092.60	-4366.21	40.4756319
-104.7899589	0.00						
12125.00	90.26	268.30	7056.18	4563.62	-1095.56	-4466.16	40.4756237
-104.7903182	0.00						

DONN_5N-20C-L_PWP__REV-B.0_.las

12225.00	90.26	268.30	7055.73	4663.23	-1098.53	-4566.12	40.4756155
-104.7906775	0.00						
12325.00	90.26	268.30	7055.27	4762.85	-1101.49	-4666.07	40.4756073
-104.7910368	0.00						
12425.00	90.26	268.30	7054.82	4862.47	-1104.46	-4766.03	40.4755991
-104.7913960	0.00						
12525.00	90.26	268.30	7054.36	4962.08	-1107.43	-4865.98	40.4755909
-104.7917553	0.00						
12625.00	90.26	268.30	7053.91	5061.70	-1110.39	-4965.94	40.4755827
-104.7921146	0.00						
12725.00	90.26	268.30	7053.45	5161.32	-1113.36	-5065.89	40.4755745
-104.7924739	0.00						
12825.00	90.26	268.30	7052.99	5260.93	-1116.33	-5165.85	40.4755663
-104.7928331	0.00						
12855.23	90.26	268.30	7052.86	5291.05	-1117.22	-5196.07	40.4755639
-104.7929418	0.00						
12925.00	90.26	270.39	7052.54	5360.42	-1118.02	-5265.82	40.4755616
-104.7931925	3.00						
13025.00	90.26	273.39	7052.08	5459.28	-1114.72	-5365.76	40.4755707
-104.7935517	3.00						
13125.00	90.26	276.39	7051.62	5557.23	-1106.19	-5465.38	40.4755940
-104.7939098	3.00						
13225.00	90.26	279.39	7051.17	5653.98	-1092.46	-5564.42	40.4756316
-104.7942658	3.00						
13245.23	90.26	280.00	7051.07	5673.39	-1089.05	-5584.36	40.4756410
-104.7943375	3.00						
13325.00	90.26	280.00	7050.71	5749.79	-1075.20	-5662.92	40.4756789
-104.7946199	0.00						
13425.00	90.26	280.00	7050.26	5845.56	-1057.83	-5761.40	40.4757265
-104.7949738	0.00						
13445.23	90.26	280.00	7050.16	5864.93	-1054.32	-5781.32	40.4757362
-104.7950454	0.00						
13525.00	90.26	277.61	7049.80	5941.79	-1042.11	-5860.15	40.4757696
-104.7953288	3.00						
13625.00	90.26	274.61	7049.34	6039.29	-1031.48	-5959.57	40.4757988
-104.7956862	3.00						
13725.00	90.26	271.61	7048.88	6137.81	-1026.06	-6059.41	40.4758136
-104.7960450	3.00						
13811.89	90.26	269.00	7048.49	6224.04	-1025.60	-6146.29	40.4758148
-104.7963573	3.00						
13825.00	90.26	269.00	7048.43	6237.09	-1025.83	-6159.39	40.4758141
-104.7964044	0.00						
13925.00	90.26	269.00	7047.97	6336.59	-1027.57	-6259.38	40.4758093
-104.7967638	0.00						
14025.00	90.26	269.00	7047.52	6436.09	-1029.32	-6359.36	40.4758044
-104.7971232	0.00						
14125.00	90.26	269.00	7047.06	6535.59	-1031.06	-6459.35	40.4757996
-104.7974826	0.00						
14225.00	90.26	269.00	7046.61	6635.09	-1032.81	-6559.33	40.4757947
-104.7978420	0.00						
14325.00	90.26	269.00	7046.15	6734.60	-1034.55	-6659.31	40.4757898
-104.7982013	0.00						

DONN_5N-20C-L_PWP__REV-B.0_.las

14425.00	90.26	269.00	7045.69	6834.10	-1036.30	-6759.30	40.4757850
-104.7985607	0.00						
14525.00	90.26	269.00	7045.24	6933.60	-1038.04	-6859.28	40.4757801
-104.7989201	0.00						
14625.00	90.26	269.00	7044.78	7033.10	-1039.79	-6959.26	40.4757752
-104.7992795	0.00						
14725.00	90.26	269.00	7044.33	7132.60	-1041.53	-7059.25	40.4757704
-104.7996389	0.00						
14825.00	90.26	269.00	7043.87	7232.11	-1043.28	-7159.23	40.4757655
-104.7999982	0.00						
14925.00	90.26	269.00	7043.42	7331.61	-1045.02	-7259.22	40.4757606
-104.8003576	0.00						
15025.00	90.26	269.00	7042.96	7431.11	-1046.77	-7359.20	40.4757557
-104.8007170	0.00						
15125.00	90.26	269.00	7042.51	7530.61	-1048.51	-7459.18	40.4757509
-104.8010764	0.00						
15225.00	90.26	269.00	7042.05	7630.12	-1050.26	-7559.17	40.4757460
-104.8014358	0.00						
15325.00	90.26	269.00	7041.60	7729.62	-1052.01	-7659.15	40.4757411
-104.8017951	0.00						
15425.00	90.26	269.00	7041.14	7829.12	-1053.75	-7759.13	40.4757363
-104.8021545	0.00						
15525.00	90.26	269.00	7040.68	7928.62	-1055.50	-7859.12	40.4757314
-104.8025139	0.00						
15625.00	90.26	269.00	7040.23	8028.12	-1057.24	-7959.10	40.4757265
-104.8028733	0.00						
15725.00	90.26	269.00	7039.77	8127.63	-1058.99	-8059.08	40.4757216
-104.8032327	0.00						
15825.00	90.26	269.00	7039.32	8227.13	-1060.73	-8159.07	40.4757167
-104.8035921	0.00						
15925.00	90.26	269.00	7038.86	8326.63	-1062.48	-8259.05	40.4757119
-104.8039514	0.00						
16025.00	90.26	269.00	7038.41	8426.13	-1064.22	-8359.04	40.4757070
-104.8043108	0.00						
16111.89	90.26	269.00	7038.01	8512.59	-1065.74	-8445.91	40.4757027
-104.8046231	0.00						
16125.00	90.26	268.61	7037.95	8525.64	-1066.01	-8459.02	40.4757020
-104.8046702	3.00						
16225.00	90.26	265.61	7037.50	8625.40	-1071.06	-8558.88	40.4756880
-104.8050291	3.00						
16229.34	90.26	265.48	7037.48	8629.74	-1071.40	-8563.21	40.4756871
-104.8050447	3.00						
16325.00	90.26	265.48	7037.04	8725.33	-1078.94	-8658.57	40.4756663
-104.8053874	0.00						
16425.00	90.26	265.48	7036.59	8825.26	-1086.83	-8758.25	40.4756445
-104.8057457	0.00						
16525.00	90.26	265.48	7036.13	8925.18	-1094.71	-8857.94	40.4756228
-104.8061040	0.00						
16625.00	90.26	265.48	7035.68	9025.11	-1102.60	-8957.63	40.4756010
-104.8064624	0.00						
16725.00	90.26	265.48	7035.23	9125.03	-1110.49	-9057.32	40.4755793
-104.8068207	0.00						

DONN_5N-20C-L_PWP__REV-B.0_.las

16825.00	90.26	265.48	7034.77	9224.96	-1118.37	-9157.00	40.4755576
-104.8071790	0.00						
16925.00	90.26	265.48	7034.32	9324.89	-1126.26	-9256.69	40.4755358
-104.8075373	0.00						
17025.00	90.26	265.48	7033.86	9424.81	-1134.15	-9356.38	40.4755141
-104.8078956	0.00						
17125.00	90.26	265.48	7033.41	9524.74	-1142.03	-9456.07	40.4754923
-104.8082539	0.00						
17225.00	90.26	265.48	7032.96	9624.66	-1149.92	-9555.75	40.4754705
-104.8086122	0.00						
17325.00	90.26	265.48	7032.50	9724.59	-1157.81	-9655.44	40.4754488
-104.8089705	0.00						
17425.00	90.26	265.48	7032.05	9824.51	-1165.69	-9755.13	40.4754270
-104.8093288	0.00						
17525.00	90.26	265.48	7031.59	9924.44	-1173.58	-9854.82	40.4754053
-104.8096871	0.00						
17625.00	90.26	265.48	7031.14	10024.37	-1181.47	-9954.50	40.4753835
-104.8100454	0.00						
17725.00	90.26	265.48	7030.69	10124.29	-1189.35	-10054.19	40.4753618
-104.8104037	0.00						
17825.00	90.26	265.48	7030.23	10224.22	-1197.24	-10153.88	40.4753400
-104.8107620	0.00						
17876.07	90.26	265.48	7030.00	10275.25	-1201.27	-10204.79	40.4753289
-104.8109450	0.00						

Planned Wellpath Report

DONN 5N-20C-L PWP (REV-B.0)

Page 1 of 6



REFERENCE WELLPATH IDENTIFICATION

Operator	SRC ENERGY	Slot	SLOT#22 DONN 5N-20C-L (918'FNL & 252'FEL, SEC.21)
Area	COLORADO	Well	DONN 5N-20C-L
Field	WELD COUNTY (NAD83,TRUE NORTH)	Wellbore	DONN 5N-20C-L PWB
Facility	SEC.21-T06N-R66W		

REPORT SETUP INFORMATION

Projection System	NAD83 / Lambert Colorado SP, Northern Zone (501), US feet	Software System	WellArchitect® 5.1
North Reference	True	User	Doddanna
Scale	0.999965	Report Generated	8/25/2017 at 10:09:38 AM
Convergence at slot	0.47° East	Database/Source file	Denver DB/DONN_5N-20C-L_PWP__REV-B.0_.xml

WELLPATH LOCATION

	Local coordinates		Grid coordinates		Geographic coordinates	
	North[ft]	East[ft]	Easting[US ft]	Northing[US ft]	Latitude	Longitude
Slot Location	883.79	23.65	3201888.02	1418032.19	40°28'43.075"N	104°46'27.354"W
Facility Reference Pt			3201871.60	1417148.27	40°28'34.342"N	104°46'27.660"W
Field Reference Pt			3171284.48	1426358.81	40°30'07.643"N	104°53'02.634"W

WELLPATH DATUM

Calculation method	Minimum curvature	PRECISION DRILLING (25') (RKB) to Facility Vertical Datum	4777.00ft
Horizontal Reference Pt	Slot	PRECISION DRILLING (25') (RKB) to Mean Sea Level	4777.00ft
Vertical Reference Pt	PRECISION DRILLING (25') (RKB)	PRECISION DRILLING (25') (RKB) to Mud Line at Slot (SLOT#22 DONN 5N-20C-L (918'FNL & 252'FEL, SEC.21))	4777.00ft
MD Reference Pt	PRECISION DRILLING (25') (RKB)	Section Origin	N 0.00, E 0.00 ft
Field Vertical Reference	Mean Sea Level	Section Azimuth	263.29°

Planned Wellpath Report

DONN 5N-20C-L PWP (REV-B.0)

Page 2 of 6



REFERENCE WELLPATH IDENTIFICATION

Operator	SRC ENERGY	Slot	SLOT#22 DONN 5N-20C-L (918'FNL & 252'FEL, SEC.21)
Area	COLORADO	Well	DONN 5N-20C-L
Field	WELD COUNTY (NAD83,TRUE NORTH)	Wellbore	DONN 5N-20C-L PWB
Facility	SEC.21-T06N-R66W		

WELLPATH DATA (191 stations) † = interpolated/extrapolated station

MD [ft]	Inclination [°]	Azimuth [°]	TVD [ft]	Vert Sect [ft]	North [ft]	East [ft]	DLS [°/100ft]	Comments
0.00†	0.000	138.768	0.00	0.00	0.00	0.00	0.00	
25.00	0.000	138.768	25.00	0.00	0.00	0.00	0.00	Tie On
125.00†	0.000	138.768	125.00	0.00	0.00	0.00	0.00	
225.00†	0.000	138.768	225.00	0.00	0.00	0.00	0.00	
300.00	0.000	138.768	300.00	0.00	0.00	0.00	0.00	End of Tangent
325.00†	0.500	138.768	325.00	-0.06	-0.08	0.07	2.00	
425.00†	2.500	138.768	424.96	-1.55	-2.05	1.80	2.00	
525.00†	4.500	138.768	524.77	-5.00	-6.64	5.82	2.00	
625.00†	6.500	138.768	624.30	-10.44	-13.85	12.14	2.00	
725.00†	8.500	138.768	723.44	-17.83	-23.66	20.74	2.00	
825.00†	10.500	138.768	822.07	-27.18	-36.08	31.62	2.00	
842.79	10.856	138.768	839.55	-29.05	-38.56	33.79	2.00	End of Build
925.00†	10.856	138.768	920.29	-37.83	-50.20	44.00	0.00	
1025.00†	10.856	138.768	1018.50	-48.50	-64.36	56.41	0.00	
1125.00†	10.856	138.768	1116.71	-59.17	-78.53	68.82	0.00	
1225.00†	10.856	138.768	1214.92	-69.84	-92.69	81.24	0.00	
1325.00†	10.856	138.768	1313.13	-80.52	-106.86	93.65	0.00	
1425.00†	10.856	138.768	1411.34	-91.19	-121.02	106.06	0.00	
1525.00†	10.856	138.768	1509.55	-101.86	-135.18	118.48	0.00	
1625.00†	10.856	138.768	1607.76	-112.53	-149.35	130.89	0.00	
1725.00†	10.856	138.768	1705.97	-123.21	-163.51	143.30	0.00	
1825.00†	10.856	138.768	1804.18	-133.88	-177.67	155.72	0.00	
1925.00†	10.856	138.768	1902.39	-144.55	-191.84	168.13	0.00	
2025.00†	10.856	138.768	2000.60	-155.22	-206.00	180.55	0.00	
2125.00†	10.856	138.768	2098.81	-165.90	-220.17	192.96	0.00	
2225.00†	10.856	138.768	2197.02	-176.57	-234.33	205.37	0.00	
2325.00†	10.856	138.768	2295.23	-187.24	-248.49	217.79	0.00	
2425.00†	10.856	138.768	2393.44	-197.91	-262.66	230.20	0.00	
2525.00†	10.856	138.768	2491.65	-208.59	-276.82	242.61	0.00	
2625.00†	10.856	138.768	2589.86	-219.26	-290.99	255.03	0.00	
2725.00†	10.856	138.768	2688.07	-229.93	-305.15	267.44	0.00	
2825.00†	10.856	138.768	2786.29	-240.60	-319.31	279.85	0.00	
2925.00†	10.856	138.768	2884.50	-251.28	-333.48	292.27	0.00	
3025.00†	10.856	138.768	2982.71	-261.95	-347.64	304.68	0.00	
3125.00†	10.856	138.768	3080.92	-272.62	-361.81	317.09	0.00	
3225.00†	10.856	138.768	3179.13	-283.29	-375.97	329.51	0.00	
3325.00†	10.856	138.768	3277.34	-293.97	-390.13	341.92	0.00	
3425.00†	10.856	138.768	3375.55	-304.64	-404.30	354.33	0.00	
3525.00†	10.856	138.768	3473.76	-315.31	-418.46	366.75	0.00	
3625.00†	10.856	138.768	3571.97	-325.98	-432.63	379.16	0.00	
3725.00†	10.856	138.768	3670.18	-336.66	-446.79	391.58	0.00	
3825.00†	10.856	138.768	3768.39	-347.33	-460.95	403.99	0.00	
3925.00†	10.856	138.768	3866.60	-358.00	-475.12	416.40	0.00	
4025.00†	10.856	138.768	3964.81	-368.67	-489.28	428.82	0.00	
4125.00†	10.856	138.768	4063.02	-379.35	-503.44	441.23	0.00	

Planned Wellpath Report

DONN 5N-20C-L PWP (REV-B.0)

Page 3 of 6



REFERENCE WELLPATH IDENTIFICATION

Operator	SRC ENERGY	Slot	SLOT#22 DONN 5N-20C-L (918'FNL & 252'FEL, SEC.21)
Area	COLORADO	Well	DONN 5N-20C-L
Field	WELD COUNTY (NAD83,TRUE NORTH)	Wellbore	DONN 5N-20C-L PWB
Facility	SEC.21-T06N-R66W		

WELLPATH DATA (191 stations) † = interpolated/extrapolated station

MD [ft]	Inclination [°]	Azimuth [°]	TVD [ft]	Vert Sect [ft]	North [ft]	East [ft]	DLS [°/100ft]	Comments
4225.00†	10.856	138.768	4161.23	-390.02	-517.61	453.64	0.00	
4325.00†	10.856	138.768	4259.44	-400.69	-531.77	466.06	0.00	
4425.00†	10.856	138.768	4357.65	-411.36	-545.94	478.47	0.00	
4525.00†	10.856	138.768	4455.86	-422.04	-560.10	490.88	0.00	
4625.00†	10.856	138.768	4554.07	-432.71	-574.26	503.30	0.00	
4725.00†	10.856	138.768	4652.28	-443.38	-588.43	515.71	0.00	
4825.00†	10.856	138.768	4750.49	-454.05	-602.59	528.12	0.00	
4925.00†	10.856	138.768	4848.70	-464.73	-616.76	540.54	0.00	
5025.00†	10.856	138.768	4946.91	-475.40	-630.92	552.95	0.00	
5125.00†	10.856	138.768	5045.12	-486.07	-645.08	565.37	0.00	
5225.00†	10.856	138.768	5143.34	-496.74	-659.25	577.78	0.00	
5325.00†	10.856	138.768	5241.55	-507.42	-673.41	590.19	0.00	
5425.00†	10.856	138.768	5339.76	-518.09	-687.58	602.61	0.00	
5525.00†	10.856	138.768	5437.97	-528.76	-701.74	615.02	0.00	
5625.00†	10.856	138.768	5536.18	-539.44	-715.90	627.43	0.00	
5725.00†	10.856	138.768	5634.39	-550.11	-730.07	639.85	0.00	
5825.00†	10.856	138.768	5732.60	-560.78	-744.23	652.26	0.00	
5925.00†	10.856	138.768	5830.81	-571.45	-758.39	664.67	0.00	
6025.00†	10.856	138.768	5929.02	-582.13	-772.56	677.09	0.00	
6125.00†	10.856	138.768	6027.23	-592.80	-786.72	689.50	0.00	
6225.00†	10.856	138.768	6125.44	-603.47	-800.89	701.91	0.00	
6325.00†	10.856	138.768	6223.65	-614.14	-815.05	714.33	0.00	
6425.00†	10.856	138.768	6321.86	-624.82	-829.21	726.74	0.00	
6475.86	10.856	138.768	6371.81	-630.24	-836.42	733.06	0.00	End of Tangent
6525.00†	8.767	161.925	6420.25	-633.61	-843.46	737.27	9.00	
6625.00†	10.647	216.339	6519.01	-628.79	-858.18	734.15	9.00	
6725.00†	17.627	240.501	6616.00	-608.48	-873.11	715.46	9.00	
6825.00†	25.862	250.486	6708.83	-573.18	-887.88	681.66	9.00	
6925.00†	34.463	255.809	6795.23	-523.76	-902.13	633.57	9.00	
7025.00†	43.211	259.198	6873.05	-461.43	-915.51	572.39	9.00	
7125.00†	52.032	261.629	6940.40	-387.73	-927.69	499.61	9.00	
7225.00†	60.891	263.535	6995.59	-304.47	-938.37	417.04	9.00	
7325.00†	69.773	265.136	7037.29	-213.71	-947.28	326.70	9.00	
7425.00†	78.668	266.562	7064.46	-117.68	-954.21	230.82	9.00	
7525.00†	87.569	267.901	7076.43	-18.73	-958.99	131.75	9.00	
7555.23	90.261	268.300	7077.00 ¹	11.38	-960.00	101.55	9.00	End of 3D Arc
7625.00†	90.261	268.300	7076.68	80.88	-962.06	31.81	0.00	
7725.00†	90.261	268.300	7076.23	180.50	-965.03	-68.15	0.00	
7825.00†	90.261	268.300	7075.77	280.12	-968.00	-168.10	0.00	
7925.00†	90.261	268.300	7075.32	379.73	-970.96	-268.06	0.00	
8025.00†	90.261	268.300	7074.86	479.35	-973.93	-368.01	0.00	
8125.00†	90.261	268.300	7074.40	578.96	-976.90	-467.97	0.00	
8225.00†	90.261	268.300	7073.95	678.58	-979.86	-567.92	0.00	
8325.00†	90.261	268.300	7073.49	778.20	-982.83	-667.87	0.00	
8425.00†	90.261	268.300	7073.04	877.81	-985.80	-767.83	0.00	

Planned Wellpath Report

DONN 5N-20C-L PWP (REV-B.0)

Page 4 of 6



REFERENCE WELLPATH IDENTIFICATION

Operator	SRC ENERGY	Slot	SLOT#22 DONN 5N-20C-L (918'FNL & 252'FEL, SEC.21)
Area	COLORADO	Well	DONN 5N-20C-L
Field	WELD COUNTY (NAD83,TRUE NORTH)	Wellbore	DONN 5N-20C-L PWB
Facility	SEC.21-T06N-R66W		

WELLPATH DATA (191 stations) † = interpolated/extrapolated station

MD [ft]	Inclination [°]	Azimuth [°]	TVD [ft]	Vert Sect [ft]	North [ft]	East [ft]	DLS [°/100ft]	Comments
8525.00†	90.261	268.300	7072.58	977.43	-988.76	-867.78	0.00	
8625.00†	90.261	268.300	7072.13	1077.05	-991.73	-967.74	0.00	
8725.00†	90.261	268.300	7071.67	1176.66	-994.70	-1067.69	0.00	
8825.00†	90.261	268.300	7071.22	1276.28	-997.66	-1167.65	0.00	
8925.00†	90.261	268.300	7070.76	1375.89	-1000.63	-1267.60	0.00	
9025.00†	90.261	268.300	7070.30	1475.51	-1003.60	-1367.56	0.00	
9125.00†	90.261	268.300	7069.85	1575.13	-1006.56	-1467.51	0.00	
9225.00†	90.261	268.300	7069.39	1674.74	-1009.53	-1567.47	0.00	
9325.00†	90.261	268.300	7068.94	1774.36	-1012.50	-1667.42	0.00	
9425.00†	90.261	268.300	7068.48	1873.98	-1015.46	-1767.38	0.00	
9525.00†	90.261	268.300	7068.03	1973.59	-1018.43	-1867.33	0.00	
9625.00†	90.261	268.300	7067.57	2073.21	-1021.40	-1967.29	0.00	
9725.00†	90.261	268.300	7067.12	2172.83	-1024.36	-2067.24	0.00	
9825.00†	90.261	268.300	7066.66	2272.44	-1027.33	-2167.20	0.00	
9925.00†	90.261	268.300	7066.21	2372.06	-1030.30	-2267.15	0.00	
10025.00†	90.261	268.300	7065.75	2471.67	-1033.26	-2367.11	0.00	
10125.00†	90.261	268.300	7065.29	2571.29	-1036.23	-2467.06	0.00	
10225.00†	90.261	268.300	7064.84	2670.91	-1039.20	-2567.02	0.00	
10325.00†	90.261	268.300	7064.38	2770.52	-1042.16	-2666.97	0.00	
10425.00†	90.261	268.300	7063.93	2870.14	-1045.13	-2766.93	0.00	
10525.00†	90.261	268.300	7063.47	2969.76	-1048.10	-2866.88	0.00	
10625.00†	90.261	268.300	7063.02	3069.37	-1051.06	-2966.84	0.00	
10725.00†	90.261	268.300	7062.56	3168.99	-1054.03	-3066.79	0.00	
10825.00†	90.261	268.300	7062.11	3268.61	-1057.00	-3166.75	0.00	
10925.00†	90.261	268.300	7061.65	3368.22	-1059.96	-3266.70	0.00	
11025.00†	90.261	268.300	7061.19	3467.84	-1062.93	-3366.66	0.00	
11125.00†	90.261	268.300	7060.74	3567.45	-1065.90	-3466.61	0.00	
11225.00†	90.261	268.300	7060.28	3667.07	-1068.86	-3566.57	0.00	
11325.00†	90.261	268.300	7059.83	3766.69	-1071.83	-3666.52	0.00	
11425.00†	90.261	268.300	7059.37	3866.30	-1074.80	-3766.48	0.00	
11525.00†	90.261	268.300	7058.92	3965.92	-1077.76	-3866.43	0.00	
11625.00†	90.261	268.300	7058.46	4065.54	-1080.73	-3966.39	0.00	
11725.00†	90.261	268.300	7058.01	4165.15	-1083.70	-4066.34	0.00	
11825.00†	90.261	268.300	7057.55	4264.77	-1086.66	-4166.30	0.00	
11925.00†	90.261	268.300	7057.09	4364.39	-1089.63	-4266.25	0.00	
12025.00†	90.261	268.300	7056.64	4464.00	-1092.60	-4366.21	0.00	
12125.00†	90.261	268.300	7056.18	4563.62	-1095.56	-4466.16	0.00	
12225.00†	90.261	268.300	7055.73	4663.23	-1098.53	-4566.12	0.00	
12325.00†	90.261	268.300	7055.27	4762.85	-1101.49	-4666.07	0.00	
12425.00†	90.261	268.300	7054.82	4862.47	-1104.46	-4766.03	0.00	
12525.00†	90.261	268.300	7054.36	4962.08	-1107.43	-4865.98	0.00	
12625.00†	90.261	268.300	7053.91	5061.70	-1110.39	-4965.94	0.00	
12725.00†	90.261	268.300	7053.45	5161.32	-1113.36	-5065.89	0.00	
12825.00†	90.261	268.300	7052.99	5260.93	-1116.33	-5165.85	0.00	
12855.23	90.261	268.300	7052.86	5291.05	-1117.22	-5196.07	0.00	End of Tangent

Planned Wellpath Report

DONN 5N-20C-L PWP (REV-B.0)

Page 5 of 6



REFERENCE WELLPATH IDENTIFICATION

Operator	SRC ENERGY	Slot	SLOT#22 DONN 5N-20C-L (918'FNL & 252'FEL, SEC.21)
Area	COLORADO	Well	DONN 5N-20C-L
Field	WELD COUNTY (NAD83,TRUE NORTH)	Wellbore	DONN 5N-20C-L PWB
Facility	SEC.21-T06N-R66W		

WELLPATH DATA (191 stations) † = interpolated/extrapolated station

MD [ft]	Inclination [°]	Azimuth [°]	TVD [ft]	Vert Sect [ft]	North [ft]	East [ft]	DLS [°/100ft]	Comments
12925.00†	90.262	270.393	7052.54	5360.42	-1118.02	-5265.82	3.00	
13025.00†	90.262	273.393	7052.08	5459.28	-1114.72	-5365.76	3.00	
13125.00†	90.262	276.393	7051.62	5557.23	-1106.19	-5465.38	3.00	
13225.00†	90.261	279.393	7051.17	5653.98	-1092.46	-5564.42	3.00	
13245.23	90.261	280.000	7051.07	5673.39	-1089.05	-5584.36	3.00	End of 3D Arc
13325.00†	90.261	280.000	7050.71	5749.79	-1075.20	-5662.92	0.00	
13425.00†	90.261	280.000	7050.26	5845.56	-1057.83	-5761.40	0.00	
13445.23	90.261	280.000	7050.16	5864.93	-1054.32	-5781.32	0.00	End of Tangent
13525.00†	90.262	277.607	7049.80	5941.79	-1042.11	-5860.15	3.00	
13625.00†	90.262	274.607	7049.34	6039.29	-1031.48	-5959.57	3.00	
13725.00†	90.262	271.607	7048.88	6137.81	-1026.06	-6059.41	3.00	
13811.89	90.261	269.000	7048.49	6224.04	-1025.60	-6146.29	3.00	End of 3D Arc
13825.00†	90.261	269.000	7048.43	6237.09	-1025.83	-6159.39	0.00	
13925.00†	90.261	269.000	7047.97	6336.59	-1027.57	-6259.38	0.00	
14025.00†	90.261	269.000	7047.52	6436.09	-1029.32	-6359.36	0.00	
14125.00†	90.261	269.000	7047.06	6535.59	-1031.06	-6459.35	0.00	
14225.00†	90.261	269.000	7046.61	6635.09	-1032.81	-6559.33	0.00	
14325.00†	90.261	269.000	7046.15	6734.60	-1034.55	-6659.31	0.00	
14425.00†	90.261	269.000	7045.69	6834.10	-1036.30	-6759.30	0.00	
14525.00†	90.261	269.000	7045.24	6933.60	-1038.04	-6859.28	0.00	
14625.00†	90.261	269.000	7044.78	7033.10	-1039.79	-6959.26	0.00	
14725.00†	90.261	269.000	7044.33	7132.60	-1041.53	-7059.25	0.00	
14825.00†	90.261	269.000	7043.87	7232.11	-1043.28	-7159.23	0.00	
14925.00†	90.261	269.000	7043.42	7331.61	-1045.02	-7259.22	0.00	
15025.00†	90.261	269.000	7042.96	7431.11	-1046.77	-7359.20	0.00	
15125.00†	90.261	269.000	7042.51	7530.61	-1048.51	-7459.18	0.00	
15225.00†	90.261	269.000	7042.05	7630.12	-1050.26	-7559.17	0.00	
15325.00†	90.261	269.000	7041.60	7729.62	-1052.01	-7659.15	0.00	
15425.00†	90.261	269.000	7041.14	7829.12	-1053.75	-7759.13	0.00	
15525.00†	90.261	269.000	7040.68	7928.62	-1055.50	-7859.12	0.00	
15625.00†	90.261	269.000	7040.23	8028.12	-1057.24	-7959.10	0.00	
15725.00†	90.261	269.000	7039.77	8127.63	-1058.99	-8059.08	0.00	
15825.00†	90.261	269.000	7039.32	8227.13	-1060.73	-8159.07	0.00	
15925.00†	90.261	269.000	7038.86	8326.63	-1062.48	-8259.05	0.00	
16025.00†	90.261	269.000	7038.41	8426.13	-1064.22	-8359.04	0.00	
16111.89	90.261	269.000	7038.01	8512.59	-1065.74	-8445.91	0.00	End of Tangent
16125.00†	90.261	268.607	7037.95	8525.64	-1066.01	-8459.02	3.00	
16225.00†	90.260	265.607	7037.50	8625.40	-1071.06	-8558.88	3.00	
16229.34	90.260	265.477	7037.48	8629.74	-1071.40	-8563.21	3.00	End of 3D Arc
16325.00†	90.260	265.477	7037.04	8725.33	-1078.94	-8658.57	0.00	
16425.00†	90.260	265.477	7036.59	8825.26	-1086.83	-8758.25	0.00	
16525.00†	90.260	265.477	7036.13	8925.18	-1094.71	-8857.94	0.00	
16625.00†	90.260	265.477	7035.68	9025.11	-1102.60	-8957.63	0.00	
16725.00†	90.260	265.477	7035.23	9125.03	-1110.49	-9057.32	0.00	
16825.00†	90.260	265.477	7034.77	9224.96	-1118.37	-9157.00	0.00	

Planned Wellpath Report

DONN 5N-20C-L PWP (REV-B.0)

Page 6 of 6



REFERENCE WELLPATH IDENTIFICATION

Operator	SRC ENERGY	Slot	SLOT#22 DONN 5N-20C-L (918'FNL & 252'FEL, SEC.21)
Area	COLORADO	Well	DONN 5N-20C-L
Field	WELD COUNTY (NAD83,TRUE NORTH)	Wellbore	DONN 5N-20C-L PWB
Facility	SEC.21-T06N-R66W		

WELLPATH DATA (191 stations) † = interpolated/extrapolated station

MD [ft]	Inclination [°]	Azimuth [°]	TVD [ft]	Vert Sect [ft]	North [ft]	East [ft]	DLS [°/100ft]	Comments
16925.00†	90.260	265.477	7034.32	9324.89	-1126.26	-9256.69	0.00	
17025.00†	90.260	265.477	7033.86	9424.81	-1134.15	-9356.38	0.00	
17125.00†	90.260	265.477	7033.41	9524.74	-1142.03	-9456.07	0.00	
17225.00†	90.260	265.477	7032.96	9624.66	-1149.92	-9555.75	0.00	
17325.00†	90.260	265.477	7032.50	9724.59	-1157.81	-9655.44	0.00	
17425.00†	90.260	265.477	7032.05	9824.51	-1165.69	-9755.13	0.00	
17525.00†	90.260	265.477	7031.59	9924.44	-1173.58	-9854.82	0.00	
17625.00†	90.260	265.477	7031.14	10024.37	-1181.47	-9954.50	0.00	
17725.00†	90.260	265.477	7030.69	10124.29	-1189.35	-10054.19	0.00	
17825.00†	90.260	265.477	7030.23	10224.22	-1197.24	-10153.88	0.00	
17876.07	90.260	265.477	7030.00 ²	10275.25	-1201.27	-10204.79	0.00	End of Tangent

HOLE & CASING SECTIONS

- Ref Wellbore: DONN 5N-20C-L PWB Ref Wellpath: DONN 5N-20C-L PWP (REV-B.0)

String/Diameter	Start MD [ft]	End MD [ft]	Interval [ft]	Start TVD [ft]	End TVD [ft]	Start N/S [ft]	Start E/W [ft]	End N/S [ft]	End E/W [ft]
13.5in Open Hole	25.00	1750.00	1725.00	25.00	1730.52	0.00	0.00	-167.05	146.41
9.625in Casing Surface	25.00	1750.00	1725.00	25.00	1730.52	0.00	0.00	-167.05	146.41
8.5in Open Hole	1750.00	17876.07	16126.07	1730.52	N/A	-167.05	146.41	N/A	N/A

TARGETS

Name	MD [ft]	TVD [ft]	North [ft]	East [ft]	Grid East [US ft]	Grid North [US ft]	Latitude	Longitude	Shape
SEC.20-T06N-R66W		-1.00	179.97	1.39	3201887.93	1418212.16	40°28'44.854"N	104°46'27.336"W	polygon
SEC.21-T06N-R66W		39.00	-3702.83	-6165.25	3195753.51	1414279.17	40°28'06.478"N	104°47'47.123"W	polygon
2) DONN 5N-20C-L BHL ON PLAT (1927'FNL & 150'FWL, SEC.20)	17876.07	7030.00	-1201.27	-10204.79	3191693.78	1416747.49	40°28'31.184"N	104°48'39.402"W	circle
1) DONN 5N-20C-L TOP OF PROD ON PLAT (1880'FNL & 150'FEL, SEC.21)	7555.23	7077.00	-960.00	101.55	3201997.41	1417073.10	40°28'33.589"N	104°46'26.040"W	circle

SURVEY PROGRAM - Ref Wellbore: DONN 5N-20C-L PWB Ref Wellpath: DONN 5N-20C-L PWP (REV-B.0)

Start MD [ft]	End MD [ft]	Positional Uncertainty Model	Log Name/Comment	Wellbore
25.00	1750.00	Custom BHI NaviTrak (IFR1, Standard Rotating+Axial Corr) (Rockies 0.03Gt model)		DONN 5N-20C-L PWB
1750.00	17876.07	Custom BHI AutoTrak Curve (IFR1, Short) (Rockies 0.03Gt model)		DONN 5N-20C-L PWB