

# T6N, R66W

N. 1/4 COR.  
SEC. 21, T6N, R66W  
SET 2 1/2" ALUM. CAP  
P.L.S. NO. 38230

NE. COR.  
SEC. 21, T6N, R66W  
FOUND 3 1/4" ALUM. CAP  
P.L.S. NO. 31159

NW. COR.  
SEC. 21, T6N, R66W  
SET 2 1/2" ALUM. CAP  
P.L.S. NO. 38230

S 88°16'31" W 2655.47' (M)

S 88°44'15" W 2655.49' (M)

**DONN 5N-20B-L**  
SURFACE LOCATION

WELLBORE  
CONTINUES INTO  
SECTION 20

460' BUFFER

S 88°10'43" W 10308' GRID  
S 88°38'51" W TRUE

TOP OF  
PRODUCTION ZONE

**21**

S 88°17'51" W  
1325.77' (M)  
CENTER 1/4 COR.  
SEC. 21, T6N, R66W  
FOUND 3 1/4" ALUM. CAP  
L.S. NO. 22098

S 88°26'11" W  
1325.98' (M)  
CE. 1/16 COR.  
SEC. 21, T6N, R66W  
FOUND 3 1/4" ALUM. CAP  
L.S. NO. 7242

E. 1/4 COR.  
SEC. 21, T6N, R66W  
FOUND 2 1/2" ALUM. CAP  
L.S. NO. 38175

W. 1/4 COR.  
SEC. 21, T6N, R66W  
FOUND 3 1/4" ALUM. CAP  
L.S. NO. 22098

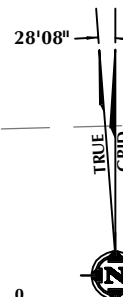
S 88°21'58" W  
1323.16' (M)  
S 88°22'26" W  
1322.98' (M)  
CW. 1/16 COR.  
SEC. 21, T6N, R66W  
FOUND 3 1/4" ALUM. CAP  
L.S. NO. 22098

**SURFACE LOCATION**  
GROUND ELEVATION= 4751.7'  
LATITUDE= 40.478687°  
LONGITUDE= -104.774264°  
1/4 1/4: NE1/4 NE1/4

**TOP OF PRODUCTION**  
LATITUDE= 40.476552°  
LONGITUDE= -104.773900°  
1/4 1/4: SE1/4 NE1/4

**BOTTOM HOLE LOCATION**  
LATITUDE= 40.475878°  
LONGITUDE= -104.810942°  
1/4 1/4: SW1/4 NW1/4

MATCH LINE  
SEE SHEET 2



E. 1/16 COR.  
SEC. 21 & SEC. 28  
T6N, R66W  
FOUND 3 1/4" ALUM. CAP  
P.L.S. NO. 7735

SCALE: 1" = 1000'

SW. COR.  
SEC. 21, T6N, R66W  
FOUND 2 1/2" ALUM. CAP  
P.L.S. NO. 28285

S 88°21'39" W  
1323.07' (M)

S 88°21'39" W  
1323.07' (M)

S 88°21'44" W  
1323.93' (M)

S 88°22'12" W  
1324.26' (M)

SE. COR.  
SEC. 21, T6N, R66W  
FOUND 2 1/2" ALUM. CAP  
L.S. NO. 23501

W. 1/16 COR.  
SEC. 21 & SEC. 28, T6N, R66W  
FOUND 3 1/4" ALUM. CAP  
P.L.S. NO. 7735

S. 1/4 COR.  
SEC. 21, T6N, R66W  
SET 2 1/2" ALUM. CAP  
P.L.S. NO. 38230

## CERTIFICATE OF SURVEYOR:

THIS IS TO CERTIFY THAT THE ABOVE PLAT WAS PREPARED FROM FIELD NOTES OF ACTUAL SURVEY MADE BY ME OR UNDER MY SUPERVISION AND THAT THE SAME ARE TRUE AND CORRECT TO THE BEST OF MY KNOWLEDGE AND BELIEF. THIS CERTIFICATE DOES NOT REPRESENT A LAND SURVEY PLAT OR IMPROVEMENT SURVEY PLAT AS DEFINED BY C.S. 38-51-302 AND CANNOT BE RELIED UPON TO DETERMINE OWNERSHIP.

*John R. Slaugh*  
7/19/17  
JOHN R. SLAUGH  
PROFESSIONAL LAND SURVEYOR  
COLORADO REGISTRATION NUMBER 38230

**NOTICE:**  
ACCORDING TO COLORADO STATE LAW YOU MUST COMMENCE ANY LEGAL ACTION BASED UPON ANY DEFECT IN THIS SURVEY WITHIN THREE YEARS AFTER YOU FIRST DISCOVER SUCH DEFECT. IN NO EVENT MAY ANY ACTION BASED UPON ANY DEFECT IN THIS SURVEY BE COMMENCED MORE THAN TEN YEARS FROM THE DATE ON THE CERTIFICATION SHOWN HEREON.

## WELL DISTANCES:

BUILDING: ±808' N  
BUILDING UNIT: ±862' SW  
HIGH OCCUPANCY BUILDING UNIT: ±3013' NW  
DESIGNATED OUTSIDE ACTIVITY AREA: 5280'+  
PUBLIC ROAD: ±238' E  
ABOVE GROUND UTILITY: ±272' E  
RAILROAD: 5280'+  
PROPERTY LINE: ±251' E

## NOTES:

- ▲ INDICATES SECTION CORNER
- INDICATES CALCULATED CORNER
- DRAWING LATITUDE AND LONGITUDE COORDINATES ARE NAD 83 (2011)(EPOCH:2010)
- ELEVATION BASED ON NAVD88 (GEOID12B)
- BASIS OF BEARING DERIVED FROM COLORADO COORDINATE SYSTEM OF 1983 NORTH ZONE.
- ALL MEASURED DISTANCES ARE GRID.  
COMBINED SCALE FACTOR: .99974122 CALCULATED FROM THE SW. CORNER OF SECTION 21, T6N, R66W
- OPERATOR: PRESTON KNUTSEN / PDOP = 2.1
- SEE ADDENDUM TO WELL LOCATION CERTIFICATE FOR EXISTING IMPROVEMENTS WITHIN 500' OF THE WELL PAD.
- WELL FOOTAGES ARE MEASURED AT RIGHT ANGLES TO THE SECTION LINES.
- THE BOTTOM OF HOLE BEARS S88°10'43"W, 10308' FROM THE TOP OF PRODUCTION ZONE.

## WELL PAD - DONN 1-21 PAD

**DONN 5N-20B-L**  
WELL LOCATION CERTIFICATE  
898' FNL & 251' FEL NENE (SURFACE)  
1678' FNL & 150' FEL SENE (TOP OF PRODUCTION)  
LOCATED IN SECTION 21  
1727' FNL & 150' FWL SWNW (BOTTOM)  
LOCATED IN SECTION 20  
T6N, R66W, 6TH P.M.  
WELD COUNTY, COLORADO



**SRC ENERGY**

1625 Broadway, Suite 300  
Denver, Colorado 80202



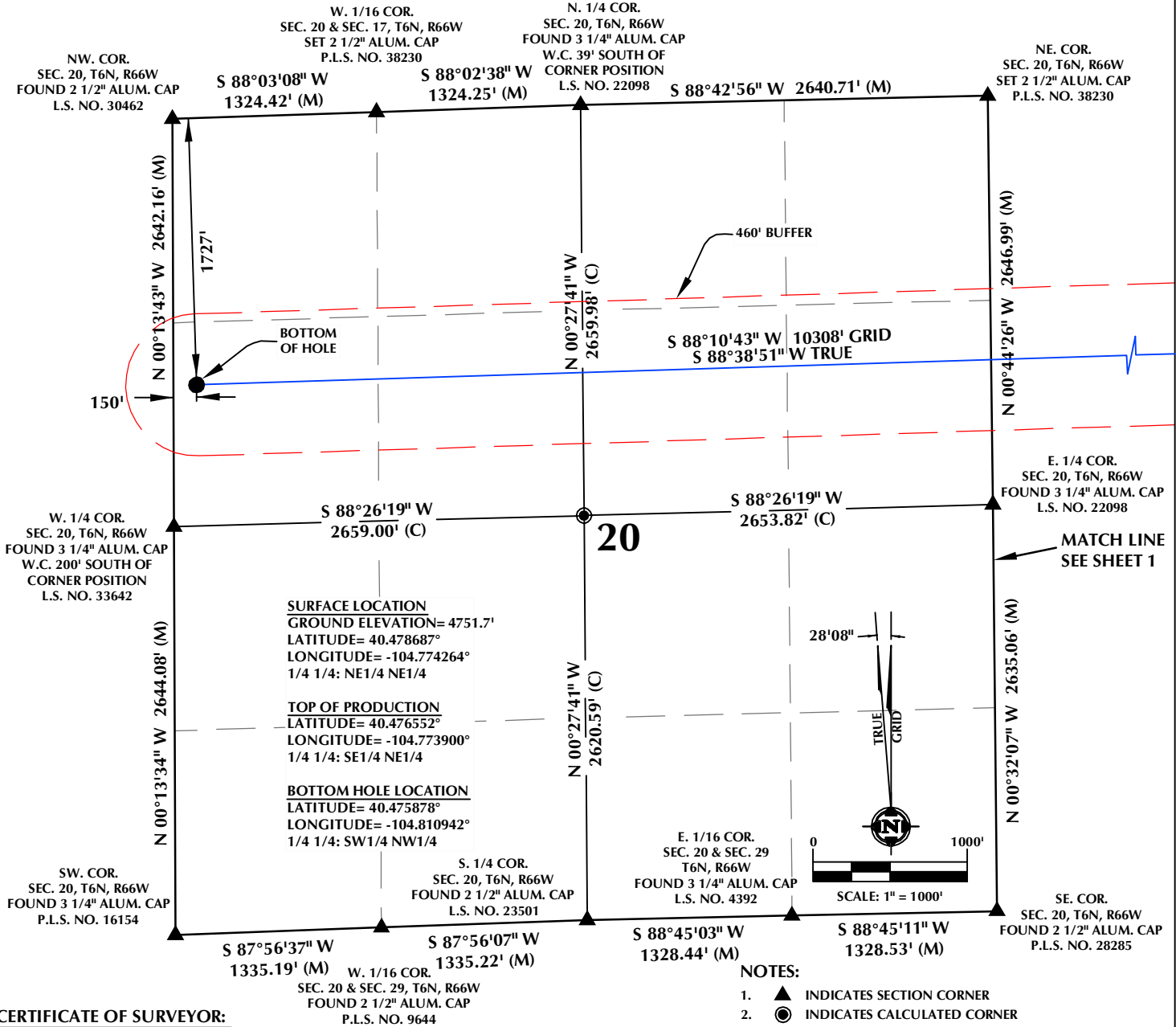
## CONSULTING, LLC

**SHERIDAN OFFICE**  
1095 Saberton Avenue  
Sheridan, Wyoming 82801  
Phone 307-674-0609

**LOVELAND OFFICE**  
1635 Foxtrail Drive, Suite 204  
Loveland, Colorado 80538  
Phone 970-776-4331

DRAFTED BY:	LMO	CHECKED BY:	JRS	SHEET NO:
DATE DRAFTED:	6/27/17	DATE SURVEYED:	5/5/17	<b>1</b>
REVISED:	7/19/17	FILE NAME:	16-120	1 OF 2

# T6N, R66W



## CERTIFICATE OF SURVEYOR:

THIS IS TO CERTIFY THAT THE ABOVE PLAT WAS PREPARED FROM FIELD NOTES OF ACTUAL SURVEY MADE BY ME OR UNDER MY SUPERVISION AND THAT THE SAME ARE TRUE AND CORRECT TO THE BEST OF MY KNOWLEDGE AND BELIEF. THIS CERTIFICATE DOES NOT REPRESENT A LAND SURVEY PLAT OR IMPROVEMENT SURVEY PLAT AS DEFINED BY C.R.S. 38-51-302 AND CANNOT BE RELIED UPON TO DETERMINE OWNERSHIP.

**JOHN R. SLAUGH**  
PROFESSIONAL LAND SURVEYOR  
COLORADO REGISTRATION NUMBER 38230  
7/19/17

**NOTICE:**  
ACCORDING TO COLORADO STATE LAW YOU MUST COMMENCE ANY LEGAL ACTION BASED UPON ANY DEFECT IN THIS SURVEY WITHIN THREE YEARS AFTER YOU FIRST DISCOVER SUCH DEFECT. IN NO EVENT MAY ANY ACTION BASED UPON ANY DEFECT IN THIS SURVEY BE COMMENCED MORE THAN TEN YEARS FROM THE DATE ON THE CERTIFICATION SHOWN HEREON.

## WELL DISTANCES:

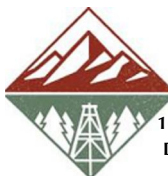
**BUILDING:** ±808' N  
**BUILDING UNIT:** ±862' SW  
**HIGH OCCUPANCY BUILDING UNIT:** ±3013' NW  
**DESIGNATED OUTSIDE ACTIVITY AREA:** 5280'+  
**PUBLIC ROAD:** ±238' E  
**ABOVE GROUND UTILITY:** ±272' E  
**RAILROAD:** 5280'+  
**PROPERTY LINE:** ±251' E

## NOTES:

- ▲ INDICATES SECTION CORNER
- INDICATES CALCULATED CORNER
- DRAWING LATITUDE AND LONGITUDE COORDINATES ARE NAD 83 (2011)(EPOCH:2010)
- ELEVATION BASED ON NAVD88 (GEOID12B)
- BASIS OF BEARING DERIVED FROM COLORADO COORDINATE SYSTEM OF 1983 NORTH ZONE.
- ALL MEASURED DISTANCES ARE GRID.  
COMBINED SCALE FACTOR: .99974122 CALCULATED FROM THE SW. CORNER OF SECTION 21, T6N, R66W
- OPERATOR: PRESTON KNUSTEN / PDOP = 2.1
- SEE ADDENDUM TO WELL LOCATION CERTIFICATE FOR EXISTING IMPROVEMENTS WITHIN 500' OF THE WELL PAD.
- WELL FOOTAGES ARE MEASURED AT RIGHT ANGLES TO THE SECTION LINES.
- THE BOTTOM OF HOLE BEARS S88°10'43"W, 10308' FROM THE TOP OF PRODUCTION ZONE.

## WELL PAD - DONN 1-21 PAD

**DONN 5N-20B-L**  
**WELL LOCATION CERTIFICATE**  
**898' FNL & 251' FEL NENE (SURFACE)**  
**1678' FNL & 150' FEL SENE (TOP OF PRODUCTION)**  
**LOCATED IN SECTION 21**  
**1727' FNL & 150' FWL SWNW (BOTTOM)**  
**LOCATED IN SECTION 20**  
**T6N, R66W, 6TH P.M.**  
**WELD COUNTY, COLORADO**



**SRC ENERGY**

1625 Broadway, Suite 300  
Denver, Colorado 80202



## CONSULTING, LLC

**SHERIDAN OFFICE**  
1095 Saberton Avenue  
Sheridan, Wyoming 82801  
Phone 307-674-0609

**LOVELAND OFFICE**  
1635 Foxtrail Drive, Suite 204  
Loveland, Colorado 80538  
Phone 970-776-4331

DRAFTED BY:	LMO	CHECKED BY:	JRS	SHEET NO:
DATE DRAFTED:	6/27/17	DATE SURVEYED:	5/5/17	2
REVISED:	7/19/17	FILE NAME:	16-120	2 OF 2