

# Inspection Photos

10/06/2017

Operator: CONTINENTAL OIL COMPANY -  
100207

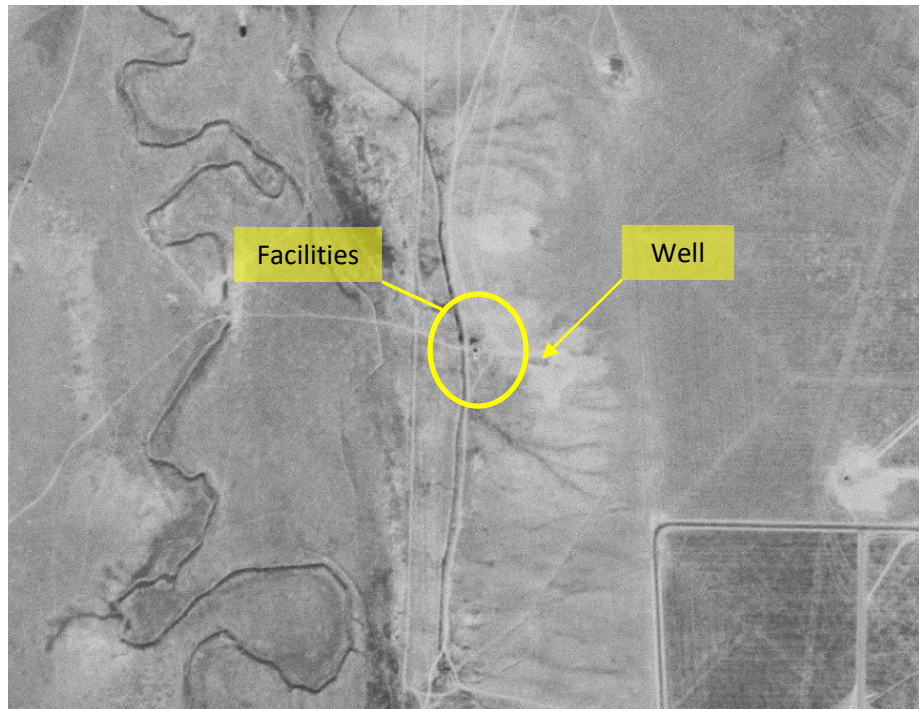
Location ID: 400737

Inspection Doc. Number: 682502699

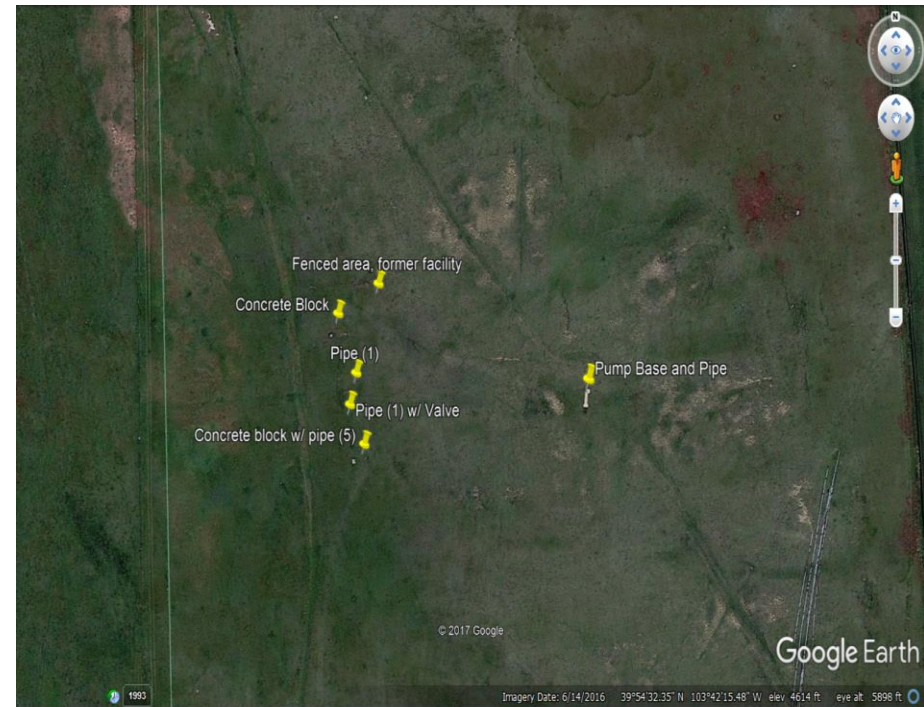
Washington County, CO

Aaron Trujillo  
NE Reclamation Specialist  
COGCC

Inspection Photos  
Operator: CONTINENTAL OIL COMPANY - 100207  
Location ID: 400737



**Photo 1:** 1953 Aerial imagery. Records indicate well was SPUD 1952 and PA'd in 1965. Image shows location of wells and facilities. Records list Continental oil Co as the operator. COGCC financial assurance records show Conoco Phillips as the surviving company and responsible for any outstanding liability.



**Photo 2:** Current available (2016) aerial imagery. Photo shows locations of various pipe and risers, concrete block and the concrete pump base w/ pipe are located.



Inspection Photos  
Operator: CONTINENTAL OIL COMPANY - 100207  
Location ID: 400737



**Photo 3:** Photo taken from the north side of the well, facing south. Photo shows concrete pump base and pipe remaining on the location. This needs to be removed. Located ~ 39°54'31.87"N, 103°42'13.13"W



**Photo 4:** Photo taken on the west end of the concrete pump base.



Inspection Photos  
Operator: CONTINENTAL OIL COMPANY - 100207  
Location ID: 400737



**Photo 5:** Photo taken ~ 39°54'33.16"N, 103°42'17.46"W, facing northwest. Photo shows old fenced area around what appears to have been a former facility.



**Photo 6:** Photo taken ~ 39°54'32.80"N, 103°42'18.32"W. Photo shows concrete block remaining at the facilities location.



Inspection Photos  
Operator: CONTINENTAL OIL COMPANY - 100207  
Location ID: 400737



**Photo 7:** Photo taken ~ 39°54'32.04"N, 103°42'17.96"W. Photo shows pipe riser remaining at former facility location.



**Photo 8:** Photo taken ~ 39°54'31.64"N, 103°42'18.11"W. Photo shows pipe riser w/ valve remaining at the former facility location.





**Photo 9:** Photo taken ~ 39°54'31.14"N, 103°42'17.82"W. Photo shows concrete block and 5 pipe risers remaining at the former facility location.