

T6N, R66W

N. 1/4 COR.
SEC. 21, T6N, R66W
SET 2 1/2" ALUM. CAP
P.L.S. NO. 38230

NE. COR.
SEC. 21, T6N, R66W
FOUND 3 1/4" ALUM. CAP
P.L.S. NO. 31159

NW. COR.
SEC. 21, T6N, R66W
SET 2 1/2" ALUM. CAP
P.L.S. NO. 38230

S 88°44'15" W 2655.49' (M)

S 88°16'31" W 2655.47' (M)

S 88°10'05" W 10304' GRID
S 88°38'13" W TRUE

460' BUFFER

WELLBORE
CONTINUES INTO
SECTION 20

N 00°44'26" W 2646.99' (M)

N 00°31'57" W
2630.13' (M)

DONN 4N-20C-L
SURFACE LOCATION

TOP OF
PRODUCTION ZONE

150'
251'

N 00°27'13" W 2634.45' (M)

21

W. 1/4 COR.
SEC. 21, T6N, R66W
FOUND 3 1/4" ALUM. CAP
L.S. NO. 22098

S 88°21'58" W

S 88°22'26" W

S 88°17'51" W

S 88°26'11" W

E. 1/4 COR.
SEC. 21, T6N, R66W
FOUND 2 1/2" ALUM. CAP
L.S. NO. 38175

1323.16' (M) CW. 1/16 COR.
SEC. 21, T6N, R66W
FOUND 3 1/4" ALUM. CAP
L.S. NO. 22098

1325.77' (M) CENTER 1/4 COR.
SEC. 21, T6N, R66W
FOUND 3 1/4" ALUM. CAP
L.S. NO. 22098

1325.98' (M) CE. 1/16 COR.
SEC. 21, T6N, R66W
FOUND 3 1/4" ALUM. CAP
L.S. NO. 7242

MATCH LINE
SEE SHEET 2

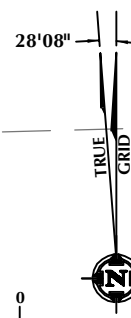
N 00°32'07" W 2635.06' (M)

N 00°32'06" W
2634.63' (M)

SURFACE LOCATION
GROUND ELEVATION= 4753.2'
LATITUDE= 40.478961°
LONGITUDE= -104.774261°
1/4 1/4: NE1/4 NE1/4

TOP OF PRODUCTION
LATITUDE= 40.479300°
LONGITUDE= -104.773899°
1/4 1/4: NE1/4 NE1/4

BOTTOM HOLE LOCATION
LATITUDE= 40.478622°
LONGITUDE= -104.810929°
1/4 1/4: NW1/4 NW1/4



E. 1/16 COR.
SEC. 21 & SEC. 28
T6N, R66W
FOUND 3 1/4" ALUM. CAP
P.L.S. NO. 7735

SCALE: 1" = 1000'

SE. COR.
SEC. 21, T6N, R66W
FOUND 2 1/2" ALUM. CAP
L.S. NO. 23501

SW. COR.
SEC. 21, T6N, R66W
FOUND 2 1/2" ALUM. CAP
P.L.S. NO. 28285

S 88°21'39" W

S 88°21'39" W

S 88°21'44" W

S 88°22'12" W

1323.07' (M) W. 1/16 COR.
SEC. 21 & SEC. 28, T6N, R66W
FOUND 3 1/4" ALUM. CAP
P.L.S. NO. 7735

1323.07' (M) S. 1/4 COR.
SEC. 21, T6N, R66W
SET 2 1/2" ALUM. CAP
P.L.S. NO. 38230

1323.93' (M)

1324.26' (M)

CERTIFICATE OF SURVEYOR:

THIS IS TO CERTIFY THAT THE ABOVE PLAT WAS PREPARED FROM FIELD NOTES OF ACTUAL SURVEY MADE BY ME OR UNDER MY SUPERVISION AND THAT THE SAME ARE TRUE AND CORRECT TO THE BEST OF MY KNOWLEDGE AND BELIEF. THIS CERTIFICATE DOES NOT REPRESENT A LAND SURVEY PLAT OR IMPROVEMENT SURVEY PLAT AS DEFINED BY C.R.S. 38-51-302 AND CANNOT BE RELIED UPON TO DETERMINE OWNERSHIP.

John R. Slaugh
7/19/17
JOHN R. SLAUGH
PROFESSIONAL LAND SURVEYOR
COLORADO REGISTRATION NUMBER 38230

NOTICE:
ACCORDING TO COLORADO STATE LAW YOU MUST COMMENCE ANY LEGAL ACTION BASED UPON ANY DEFECT IN THIS SURVEY WITHIN THREE YEARS AFTER YOU FIRST DISCOVER SUCH DEFECT. IN NO EVENT MAY ANY ACTION BASED UPON ANY DEFECT IN THIS SURVEY BE COMMENCED MORE THAN TEN YEARS FROM THE DATE ON THE CERTIFICATION SHOWN HEREON.

WELL DISTANCES:

BUILDING: ±711' N
BUILDING UNIT: ±920' SW
HIGH OCCUPANCY BUILDING UNIT: ±2979' NW
DESIGNATED OUTSIDE ACTIVITY AREA: 5280'+
PUBLIC ROAD: ±238' E
ABOVE GROUND UTILITY: ±271' E
RAILROAD: 5280'+
PROPERTY LINE: ±251' E

NOTES:

- ▲ INDICATES SECTION CORNER
- INDICATES CALCULATED CORNER
- DRAWING LATITUDE AND LONGITUDE COORDINATES ARE NAD 83 (2011)(EPOCH:2010)
- ELEVATION BASED ON NAVD88 (GEOID12B)
- BASIS OF BEARING DERIVED FROM COLORADO COORDINATE SYSTEM OF 1983 NORTH ZONE.
- ALL MEASURED DISTANCES ARE GRID.
COMBINED SCALE FACTOR: .99974122 CALCULATED FROM THE SW. CORNER OF SECTION 21, T6N, R66W
- OPERATOR: PRESTON KNUSTEN / PDOP = 2.2
- SEE ADDENDUM TO WELL LOCATION CERTIFICATE FOR EXISTING IMPROVEMENTS WITHIN 500' OF THE WELL PAD.
- WELL FOOTAGES ARE MEASURED AT RIGHT ANGLES TO THE SECTION LINES.
- THE BOTTOM OF HOLE BEARS S88°10'05"W, 10304' FROM THE TOP OF PRODUCTION ZONE.

WELL PAD - DONN 1-21 PAD

DONN 4N-20C-L
WELL LOCATION CERTIFICATE
798' FNL & 251' FEL NENE (SURFACE)
677' FNL & 150' FEL NENE (TOP OF PRODUCTION)
LOCATED IN SECTION 21
728' FNL & 150' FWL NWNW (BOTTOM)
LOCATED IN SECTION 20
T6N, R66W, 6TH P.M.
WELD COUNTY, COLORADO



SRC ENERGY
1625 Broadway, Suite 300
Denver, Colorado 80202



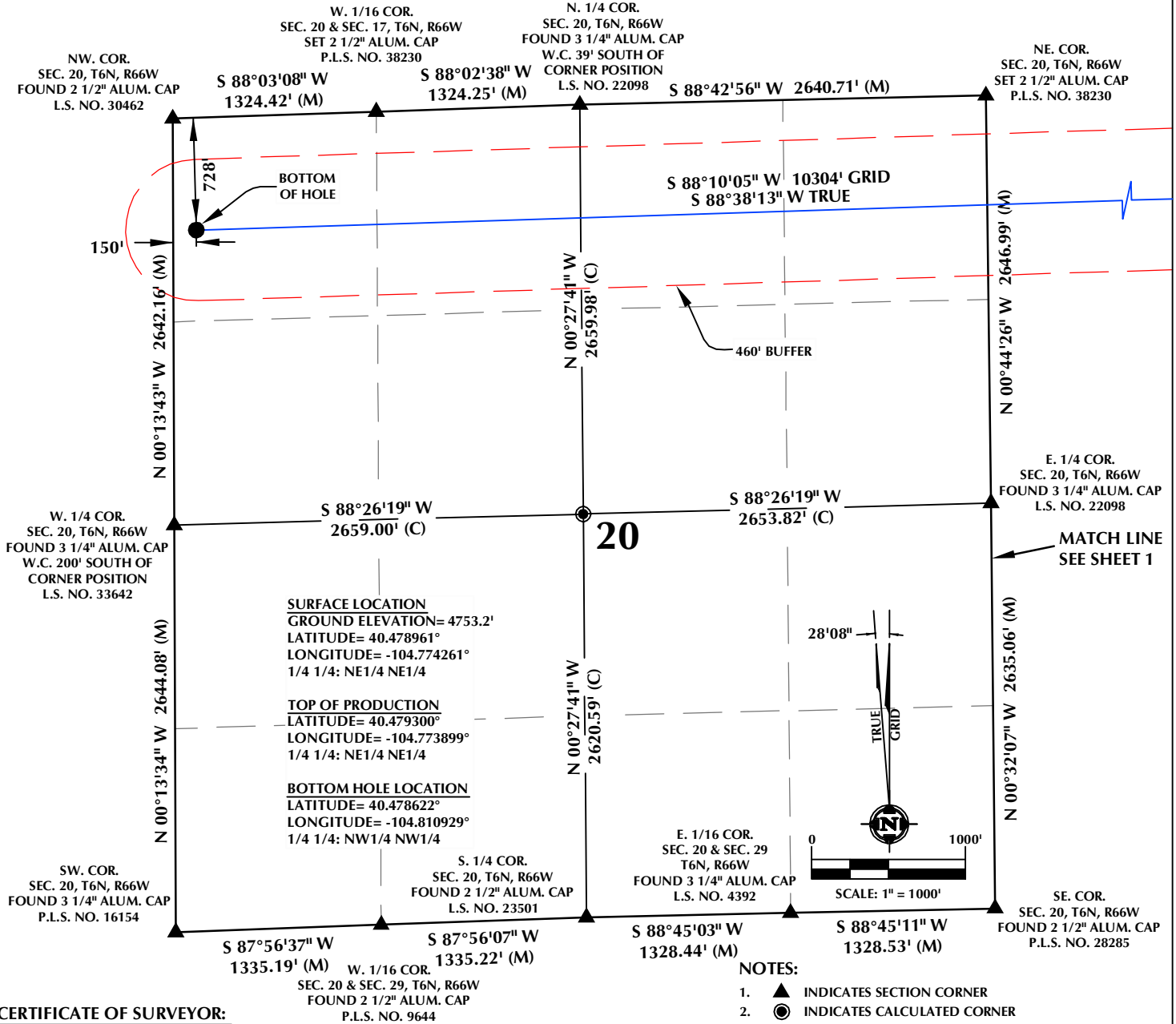
CONSULTING, LLC

SHERIDAN OFFICE
1095 Saberton Avenue
Sheridan, Wyoming 82801
Phone 307-674-0609

LOVELAND OFFICE
1635 Foxtrail Drive, Suite 204
Loveland, Colorado 80538
Phone 970-776-4331

DRAFTED BY:	LMO	CHECKED BY:	JRS	SHEET NO:
DATE DRAFTED:	6/27/17	DATE SURVEYED:	5/5/17	1
REVISED:	7/19/17	FILE NAME:	16-120	1 OF 2

T6N, R66W



CERTIFICATE OF SURVEYOR:

THIS IS TO CERTIFY THAT THE ABOVE PLAT WAS PREPARED FROM FIELD NOTES OF ACTUAL SURVEY MADE BY ME OR UNDER MY SUPERVISION AND THAT THE SAME ARE TRUE AND CORRECT TO THE BEST OF MY KNOWLEDGE AND BELIEF. THIS CERTIFICATE DOES NOT REPRESENT A LAND SURVEY PLAT OR IMPROVEMENT SURVEY PLAT AS DEFINED BY C.R.S. 38-51-302 AND CANNOT BE RELIED UPON TO DETERMINE OWNERSHIP.

John R. Slaugh
7/19/17
JOHN R. SLAUGH
PROFESSIONAL LAND SURVEYOR
COLORADO REGISTRATION NUMBER 38230

NOTICE:
ACCORDING TO COLORADO STATE LAW YOU MUST COMMENCE ANY LEGAL ACTION BASED UPON ANY DEFECT IN THIS SURVEY WITHIN THREE YEARS AFTER YOU FIRST DISCOVER SUCH DEFECT. IN NO EVENT MAY ANY ACTION BASED UPON ANY DEFECT IN THIS SURVEY BE COMMENCED MORE THAN TEN YEARS FROM THE DATE ON THE CERTIFICATION SHOWN HEREON.

WELL DISTANCES:

BUILDING: ±711' N
BUILDING UNIT: ±920' SW
HIGH OCCUPANCY BUILDING UNIT: ±2979' NW
DESIGNATED OUTSIDE ACTIVITY AREA: 5280'+
PUBLIC ROAD: ±238' E
ABOVE GROUND UTILITY: ±271' E
RAILROAD: 5280'+
PROPERTY LINE: ±251' E

WELL PAD - DONN 1-21 PAD

DONN 4N-20C-L
WELL LOCATION CERTIFICATE
798' FNL & 251' FEL NENE (SURFACE)
677' FNL & 150' FEL NENE (TOP OF PRODUCTION)
LOCATED IN SECTION 21
728' FNL & 150' FWL NWNW (BOTTOM)
LOCATED IN SECTION 20
T6N, R66W, 6TH P.M.
WELD COUNTY, COLORADO



SRC ENERGY

1625 Broadway, Suite 300
Denver, Colorado 80202



CONSULTING, LLC

SHERIDAN OFFICE
1095 Saberton Avenue
Sheridan, Wyoming 82801
Phone 307-674-0609

LOVELAND OFFICE
1635 Foxtrail Drive, Suite 204
Loveland, Colorado 80538
Phone 970-776-4331

DRAFTED BY:	LMO	CHECKED BY:	JRS	SHEET NO:
DATE DRAFTED:	6/27/17	DATE SURVEYED:	5/5/17	2
REVISED:	7/19/17	FILE NAME:	16-120	2 OF 2