

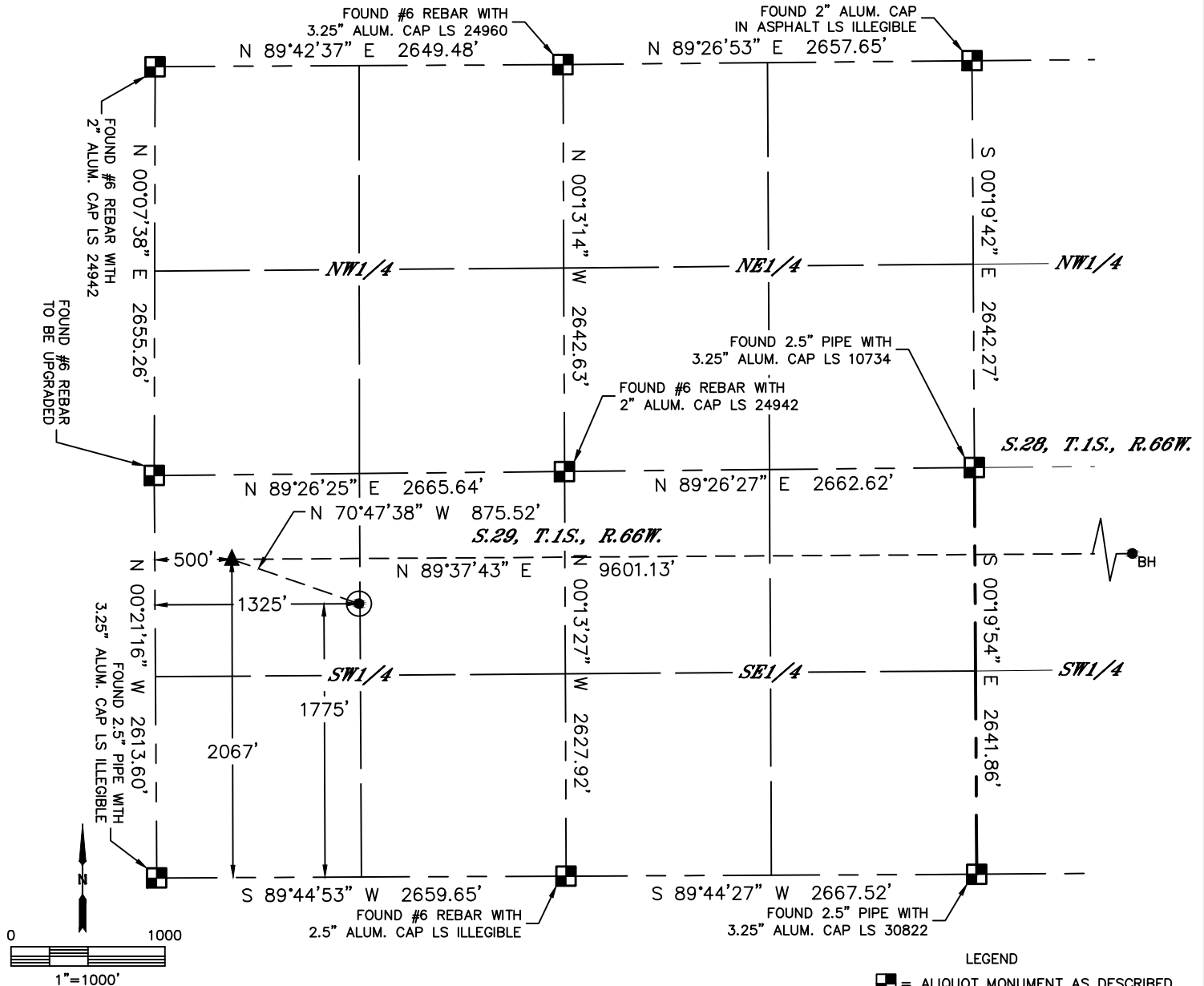


Lat40°, Inc. 6250 W. 10th Street, Unit 2, Greeley, CO 970-515-5294

WELL LOCATION CERTIFICATE

PC 1S-66-2928-12NH

SECTION: 29
TOWNSHIP: 1S
RANGE: 66W
6TH. P.M.
ADAMS COUNTY, CO



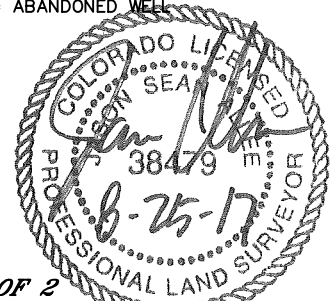
CLIENT: EXTRACTION OIL & GAS						LANDMAN: ALYSSA ANDREWS			
INSTRUMENT OPERATOR: JAKE STILLE						SURVEY DATE: 8/3/2017		SURFACE USE: CROP LAND	
SHL FOOTAGE			SHL LAT°		SHL LONG °	SHL PDOP	SHL ELEV	SHL 1/4/1/4	SHL S-T-R
1775	FSL	1325	FWL	39.93374	-104.80420	1.5	5065	NWSW	29-1S-66

BHL FOOTAGE				BHL LAT °	BHL LONG °	BHL S-T-R	EP LAT °	EP LONG °	EP S-T-R
2067	FSL	500	FEL	39.93451	-104.77291	28-1S-66	39.93455	-104.80714	29-1S-66

NEAREST CULTURAL ITEMS	
BUILDING	±1486' NW
BUILDING UNIT	±1556' NW
HIGH OCCUPANCY BUILDING UNIT	±5113' SE
DESIGNATED OUTSIDE ACTIVITY AREA	5280'±
PUBLIC ROAD (EAST 132ND AVENUE)	±833' N
ABOVE GROUND UTILITY	±871' N
RAILROAD	±2501' SE
PROPERTY LINE	±815' N

NOTE:
1) Bearings shown are Grid Bearings of the Colorado State Plane Coordinate System, North Zone, North American Datum 1983. The lineal dimensions as contained herein are based upon the "U.S. Survey Foot."
2) Distances to section lines measured at 90 degrees from said section lines.
3) Ground elevations are based on an observed GPS elevation (NAVD 1988 DATUM).
4) Latitude and Longitude shown are (NAD 83 DATUM).
5) IMPROVEMENTS: See LOCATION DRAWING for all visible improvements within 500' of oil and gas location.
6) This map does not represent a boundary survey.

- LEGEND
- = ALIQUOT MONUMENT AS DESCRIBED
 - = CALCULATED POSITION
 - = SURFACE HOLE LOCATION (SHL)
 - ▲ = ENTRY POINT LOCATION (EP)
 - BH = BOTTOM HOLE LOCATION (BHL)
 - ⊕ = EXISTING WELL
 - ⊗ = ABANDONED WELL



SHEET 1 OF 2
Jason S. Allee—On behalf of Lat40°, Inc.
Colorado Licensed Professional Land Surveyor No. 38479
DATE: 8/25/2017
PROJECT#: 2017085

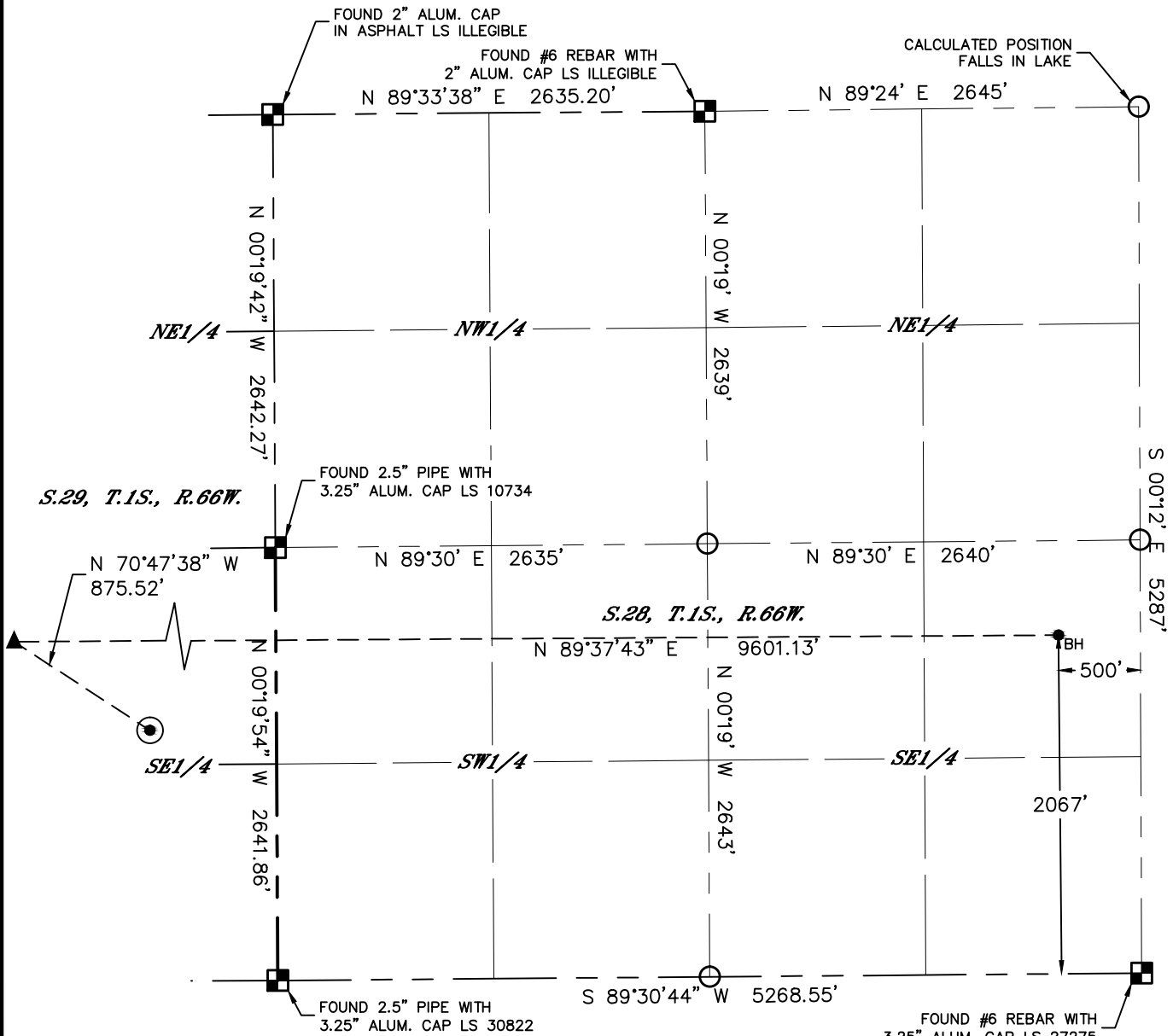


Lat40°, Inc. 6250 W. 10th Street, Unit 2, Greeley, CO 970-515-5294

WELL LOCATION CERTIFICATE

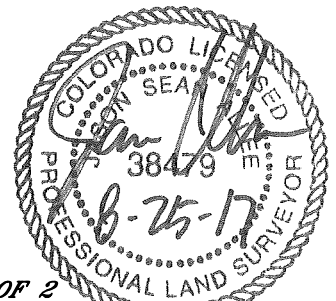
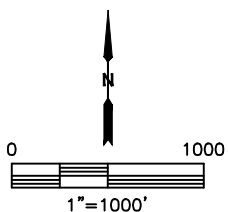
PC 1S-66-2928-12NH

SECTION: 29
TOWNSHIP: 1S
RANGE: 66W
6TH. P.M.
ADAMS COUNTY, CO



LEGEND

- = ALIQUOT MONUMENT AS DESCRIBED
- = CALCULATED POSITION
- ⊙ = SURFACE HOLE LOCATION (SHL)
- ▲ = ENTRY POINT LOCATION (EP)
- = BOTTOM HOLE LOCATION (BHL)
- ⊕ = EXISTING WELL
- ⊖ = ABANDONED WELL



SHEET 2 OF 2

Jason S. Allee—On behalf of Lat40°, Inc.
Colorado Licensed Professional Land Surveyor No. 38479
DATE: 8/25/2017
PROJECT#: 2017085