



---

October 9, 2017

Mr. Matthew Lepore, Director  
Colorado Oil & Gas Conservation Commission  
1120 Lincoln Street, Ste. 801  
Denver, Colorado 80203

RE: Rule 318.A.e.  
**PC 1S-66-2928-2CDH**  
**PC 1S-66-2928-3NH**  
**PC 1S-66-2928-4NH**

Surface Location: NWSW, Section 29, Township 1 South, Range 66 West, Adams County, CO

Dear Mr. Lepore,

Extraction Oil and Gas is planning to drill the captioned horizontal wells in accordance with the provision of COGCC Rule 318A.e.

The proposed wellbore spacing unit consists of:

Sec. 28-1S-66W: N/2N/2  
Sec. 29-1S-66W: N/2N/2

The spacing unit is a 320 acre wellbore spacing unit for the Niobrara and Codell formations.

Extraction Oil and Gas hereby certifies to the Director that all Owners within the proposed spacing unit above were notified and 30 days have passed. One objection was received from Grizzly Petroleum Company LLC and was withdrawn on 10/5/2017.

If you have any questions or issues regarding this permit, please contact Alyssa Andrews at (720) 481-2379.

Sincerely,

Alyssa Andrews  
Regulatory Analyst  
Extraction Oil & Gas, Inc.



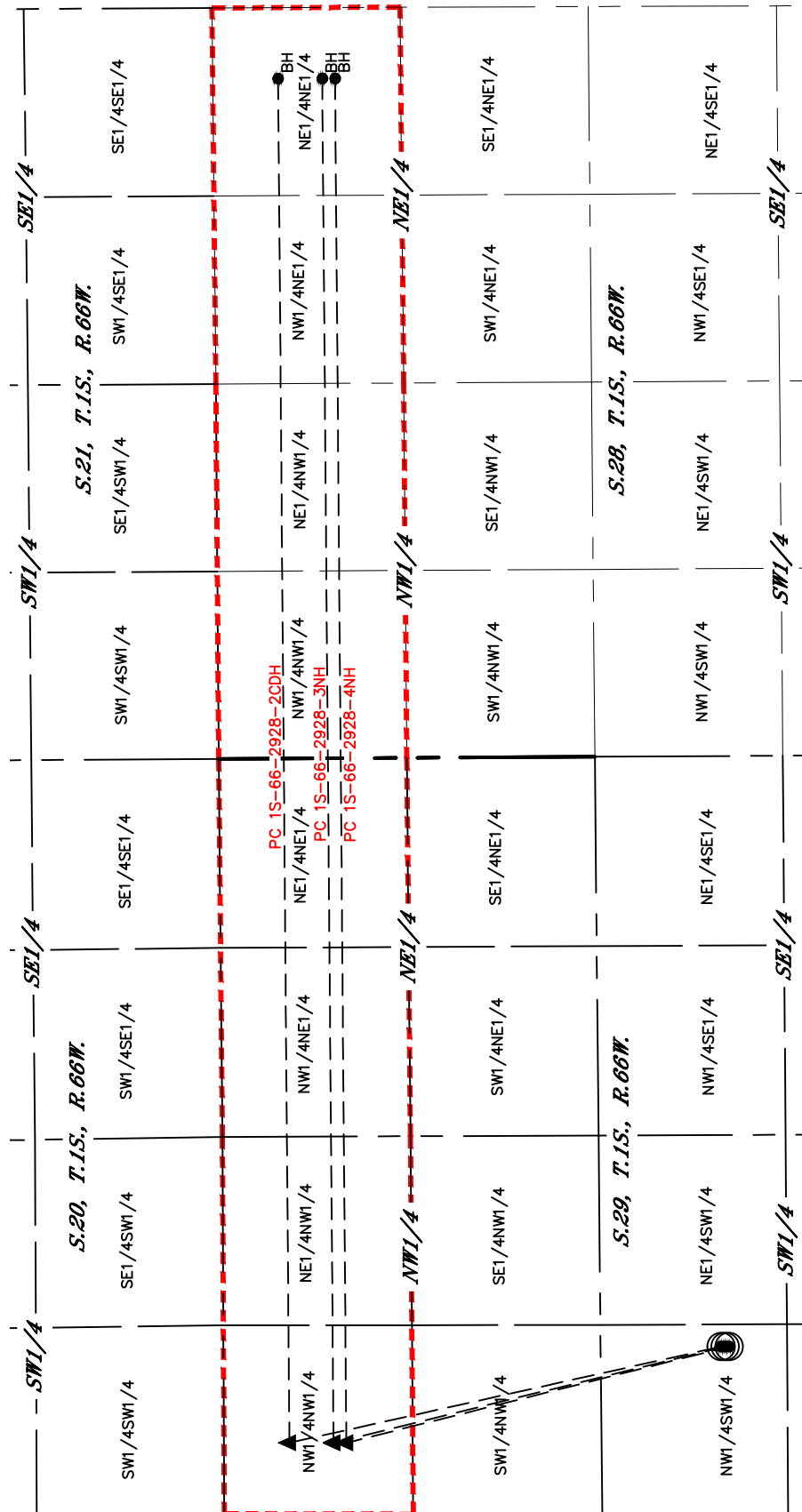
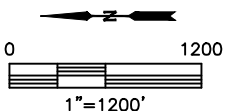
Lat40°, Inc. 6250 W. 10th Street, Unit 2, Greeley, CO 970-515-5294

# SPACING UNIT BUFFER MAP

PC 1S-66-2928-2CDH, 3NH, & 4NH

SECTION: 29  
TOWNSHIP: 1S  
RANGE: 66W  
6TH. P.M.  
ADAMS COUNTY, CO

- LEGEND
- = SURFACE HOLE LOCATION (SHL)
  - ▲ = ENTRY POINT LOCATION (EP)
  - <sub>BH</sub> = BOTTOM HOLE LOCATION (BHL)
  - ⊙ = EXISTING WELL
  - ⊙ = ABANDONED WELL
  - ▭ = SPACING UNIT BUFFER



DATE: 8/25/2017  
PROJECT#: 2017085