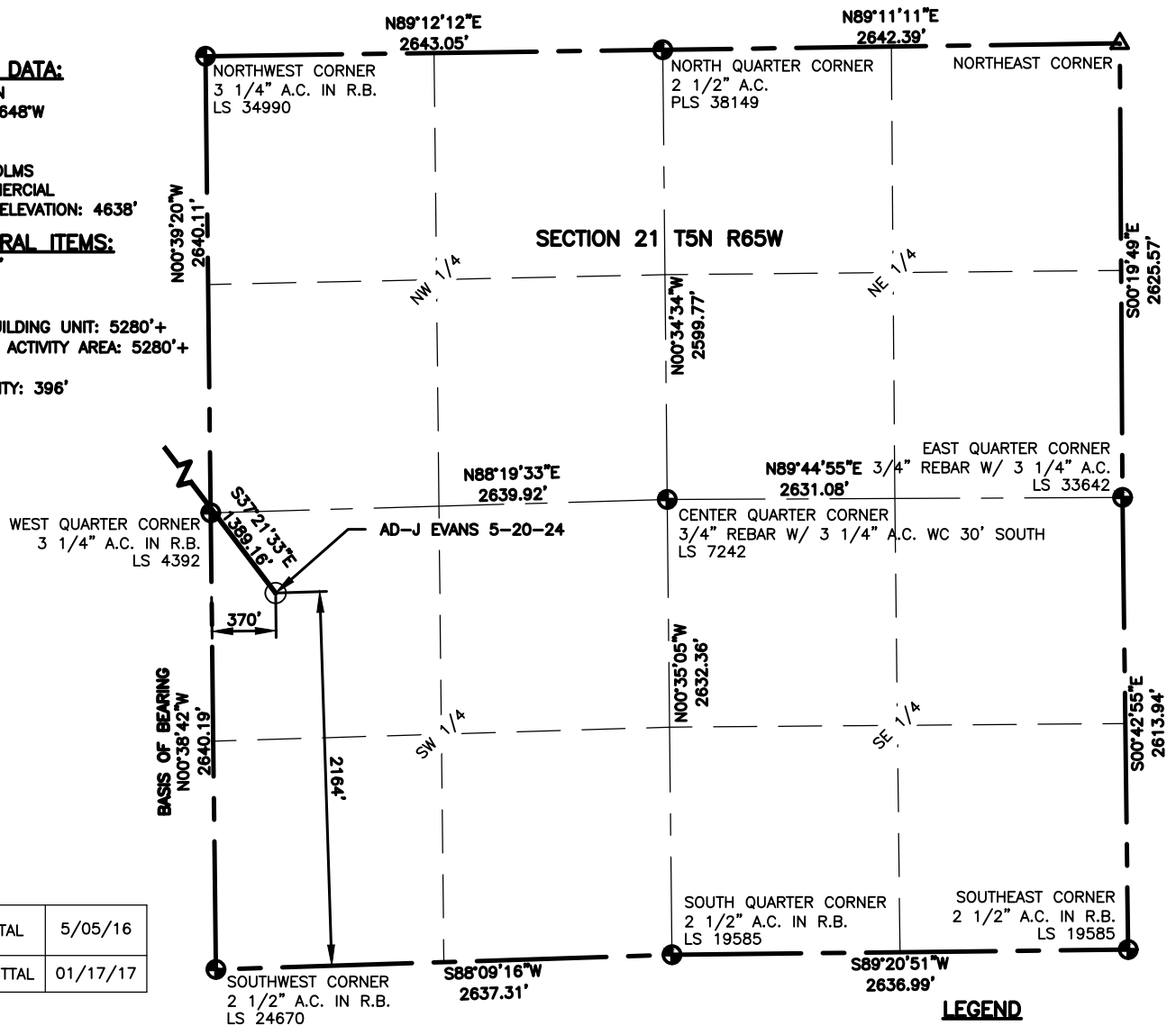


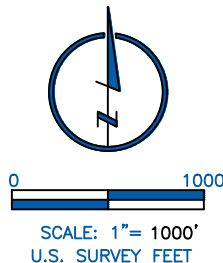
LATITUDE: 40.38332°N
LONGITUDE: -104.67648°W
ELEVATION: 4639'
PDOP: 2.2
OPERATOR: C.WESTHOLMS
SURFACE USE: COMMERCIAL
PROPOSED GROUND ELEVATION: 4638'

PROPERTY LINE: 340'
BUILDING: 865'
BUILDING UNIT: 846'
HIGH OCCUPANCY BUILDING UNIT: 5280'+
DESIGNATED OUTSIDE ACTIVITY AREA: 5280'+
PUBLIC ROAD: 357'
ABOVE GROUND UTILITY: 396'
RAILROAD: 2978'



FIRST SUBMITTAL	5/05/16
SECOND SUBMITTAL	01/17/17

LAMP, RYNEARSON & ASSOCIATES, INC., OF FT. COLLINS, COLORADO HAS, IN ACCORDANCE WITH A REQUEST FROM DUSTIN DYK AT EXTRACTION, DETERMINED THE SURFACE LOCATION OF THE WELL DESIGNATED AS AD-J EVANS 5-20-24 TO BE 2164' FROM THE SOUTH LINE AND 370' FROM THE WEST LINE OF SECTION 21, TOWNSHIP 5 NORTH, RANGE 65 WEST OF THE 6TH P.M., WELD COUNTY, COLORADO.



△	COMPUTED ALIQUOT CORNER FROM MONUMENT RECORDS	⊙	PROPOSED WELL
⊕	ALIQUOT CORNER	A.C.	ALUMINUM CAP
Ⓟ	BOTTOM HOLE	R.B.	RANGE BOX

1. DISTANCES ARE MEASURED PERPENDICULAR TO NEAREST SECTION LINE AND ARE SHOWN ON THE SAME SIDE OF THE SECTION LINE WHERE THE WELL IS LOCATED.
2. THIS MAP DOES NOT REPRESENT A MONUMENTED BOUNDARY SURVEY. SIXTEENTH CORNER LOCATIONS ARE COMPUTED, UNLESS OTHERWISE NOTED.
3. BOTTOM HOLE LOCATIONS AND HORIZONTAL COMPLETION ZONE PROVIDED BY OTHERS.

THE WEST LINE OF THE SOUTHWEST QUARTER OF SECTION 21-T5N-R65W BEARS N00°38'42"W BETWEEN THE SOUTHWEST CORNER OF SECTION 21 MONUMENTED WITH 2 1/2" A.C. IN R.B. STAMPED "LS 24670" AND THE WEST QUARTER CORNER OF SECTION 21 MONUMENTED WITH 3 1/4" A.C. IN R.B. STAMPED "LS 4392" BASED ON THE COLORADO NORTH 0501 STATE PLANE COORDINATE SYSTEM.

ELEVATIONS ARE BASED ON NAVD 88, AS OBSERVED FROM GPS OBSERVATIONS

FRANK A. KOHL
COLORADO PLS 37067
DATE OF SURVEY: 07/20/2015 (SECTION CONTROL)
DATE OF SURVEY: 04/13/2016 (WELL LOCATION)



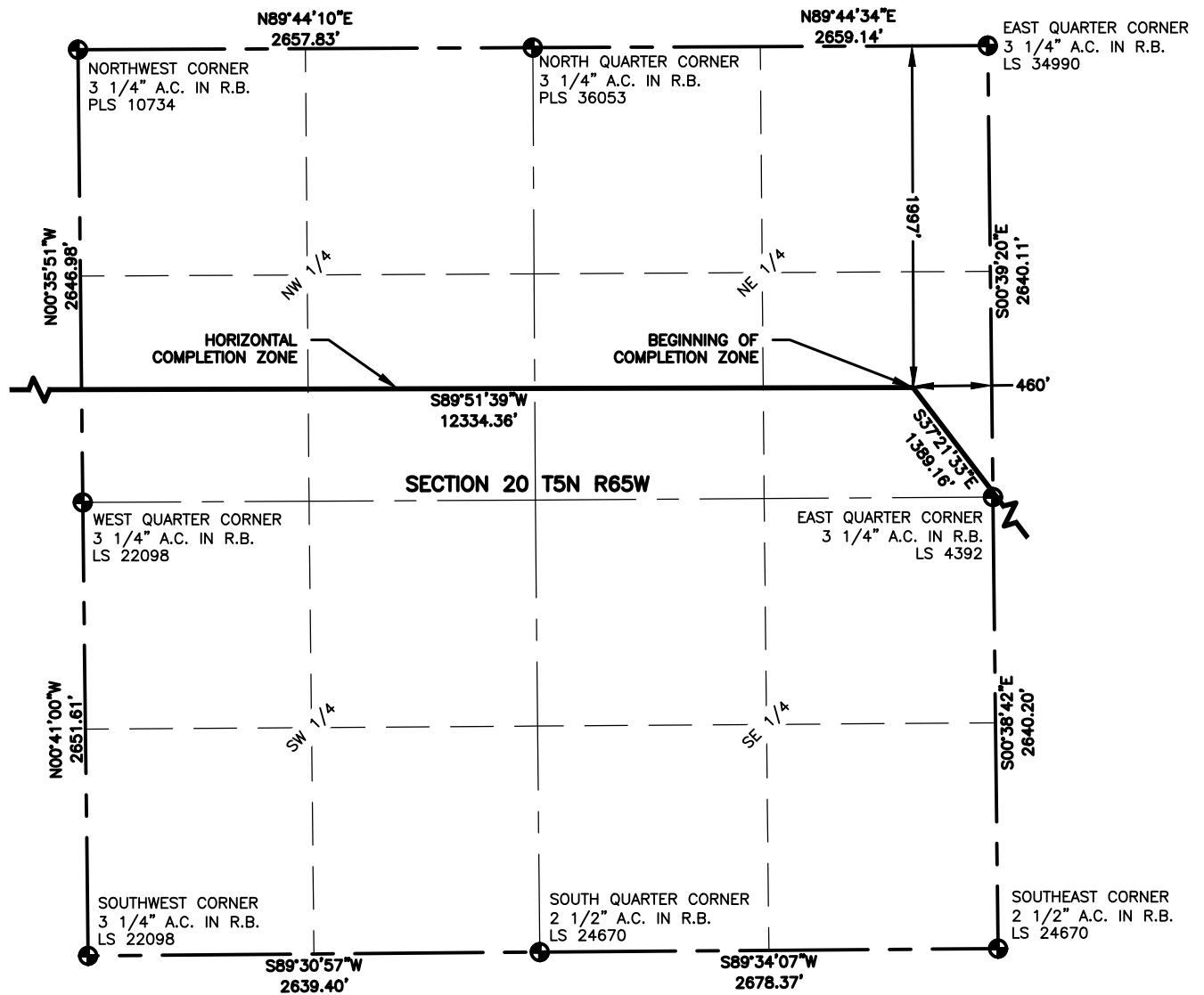
LAMP RYNEARSON
& ASSOCIATES

4715 Innovation Drive 970.226.0342 | P
Fort Collins, CO 80525 970.226.0879 | F
www.LRA-Inc.com

PROPOSED WELL LOCATION EXHIBIT
AD-J EVANS 5-20-24
1 OF 4

DRAWN BY JMC	DATE 1/13/2017	COGCC ID	PROJECT - TASK NUMBER 0216012	BOOK AND PAGE MRI 04 20-25
PATH/FILENAME	P:\Engineering\0216012 Ardrey 21-I\DRAWINGS\EXHIBITS\PRELIMINARY PLAT			

SURFACE - LOCATION
NW/4 SW/4 SEC 21 T5N R65W



LEGEND

- ALIQUOT CORNER
- ⊙ PROPOSED WELL
- ⊙ BOTTOM HOLE
- A.C. ALUMINUM CAP
- R.B. RANGE BOX

NOTES:

- DISTANCES ARE MEASURED PERPENDICULAR TO NEAREST SECTION LINE AND ARE SHOWN ON THE SAME SIDE OF THE SECTION LINE WHERE THE WELL IS LOCATED.
- THIS MAP DOES NOT REPRESENT A MONUMENTED BOUNDARY SURVEY. SIXTEENTH CORNER LOCATIONS ARE COMPUTED, UNLESS OTHERWISE NOTED.
- BOTTOM HOLE LOCATIONS AND HORIZONTAL COMPLETION ZONE PROVIDED BY OTHERS.



0 1000
SCALE: 1"= 1000'
U.S. SURVEY FEET



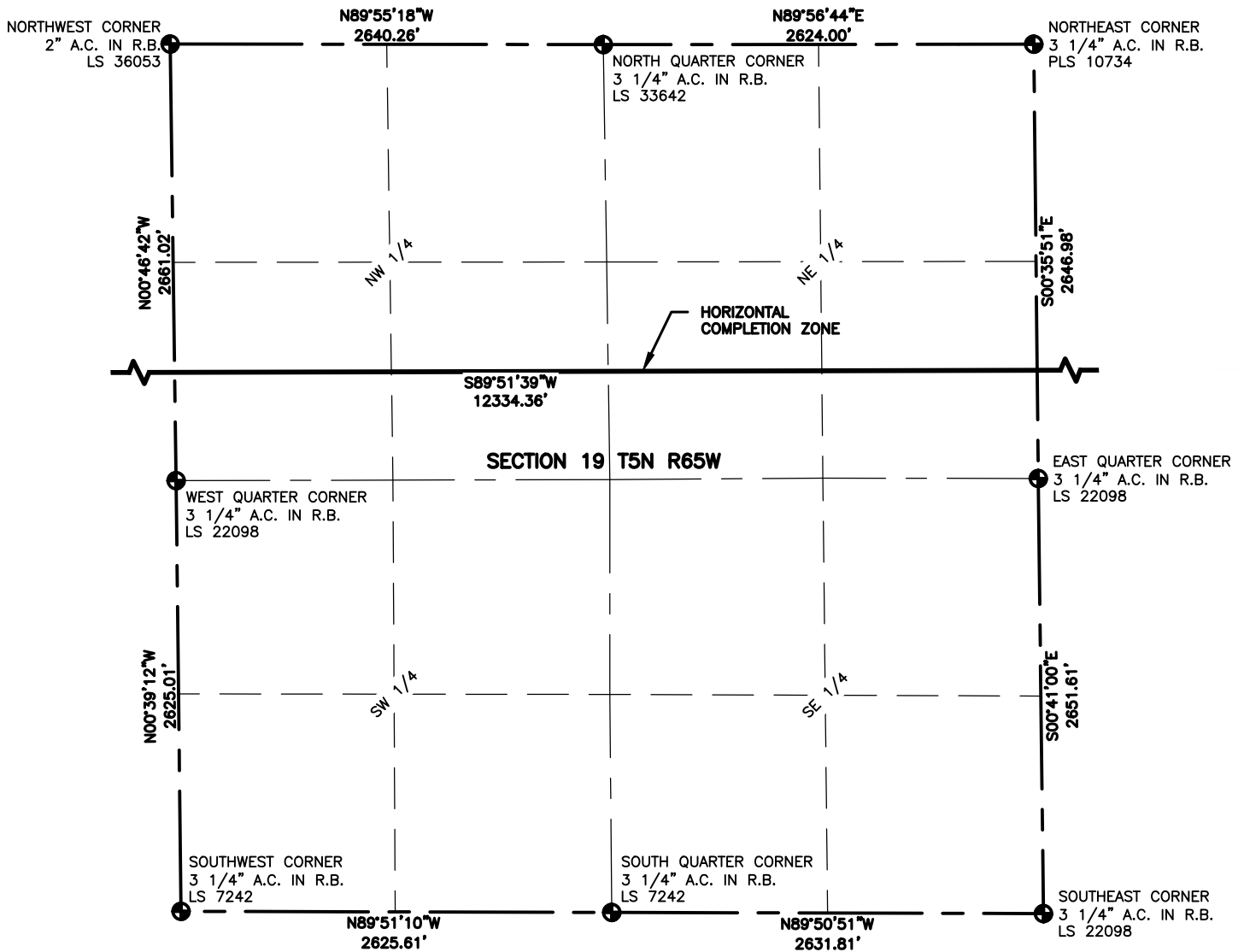
LAMP RYNEARSON
& ASSOCIATES

4715 Innovation Drive 970.226.0342 | P
Fort Collins, CO 80525 970.226.0879 | F
www.LRA-Inc.com

PROPOSED WELL LOCATION EXHIBIT
AD-J EVANS 5-20-24
2 OF 4

DRAWN BY	DATE	COGCC ID	PROJECT - TASK NUMBER	BOOK AND PAGE
JMC	01/17/17	0216012	21-I\DRAWINGS\EXHIBITS\PRELIMINARY PLAT	MRI_04 20-25

SURFACE - LOCATION
NW/4 SW/4 SEC 21 T5N R65W

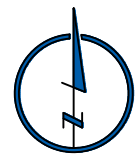


LEGEND

- ALIQUOT CORNER
- ⊙ PROPOSED WELL
- ⊙ BOTTOM HOLE
- A.C. ALUMINUM CAP
- R.B. RANGE BOX

NOTES:

- DISTANCES ARE MEASURED PERPENDICULAR TO NEAREST SECTION LINE AND ARE SHOWN ON THE SAME SIDE OF THE SECTION LINE WHERE THE WELL IS LOCATED.
- THIS MAP DOES NOT REPRESENT A MONUMENTED BOUNDARY SURVEY. SIXTEENTH CORNER LOCATIONS ARE COMPUTED, UNLESS OTHERWISE NOTED.
- BOTTOM HOLE LOCATIONS AND HORIZONTAL COMPLETION ZONE PROVIDED BY OTHERS.



0 1000
SCALE: 1"= 1000'
U.S. SURVEY FEET



LAMP RYNEARSON
& ASSOCIATES

4715 Innovation Drive 970.226.0342 | P
Fort Collins, CO 80525 970.226.0879 | F
www.LRA-Inc.com

PROPOSED WELL LOCATION EXHIBIT
AD-J EVANS 5-20-24
3 OF 4

DRAWN BY
JMC
PATH\FILENAME

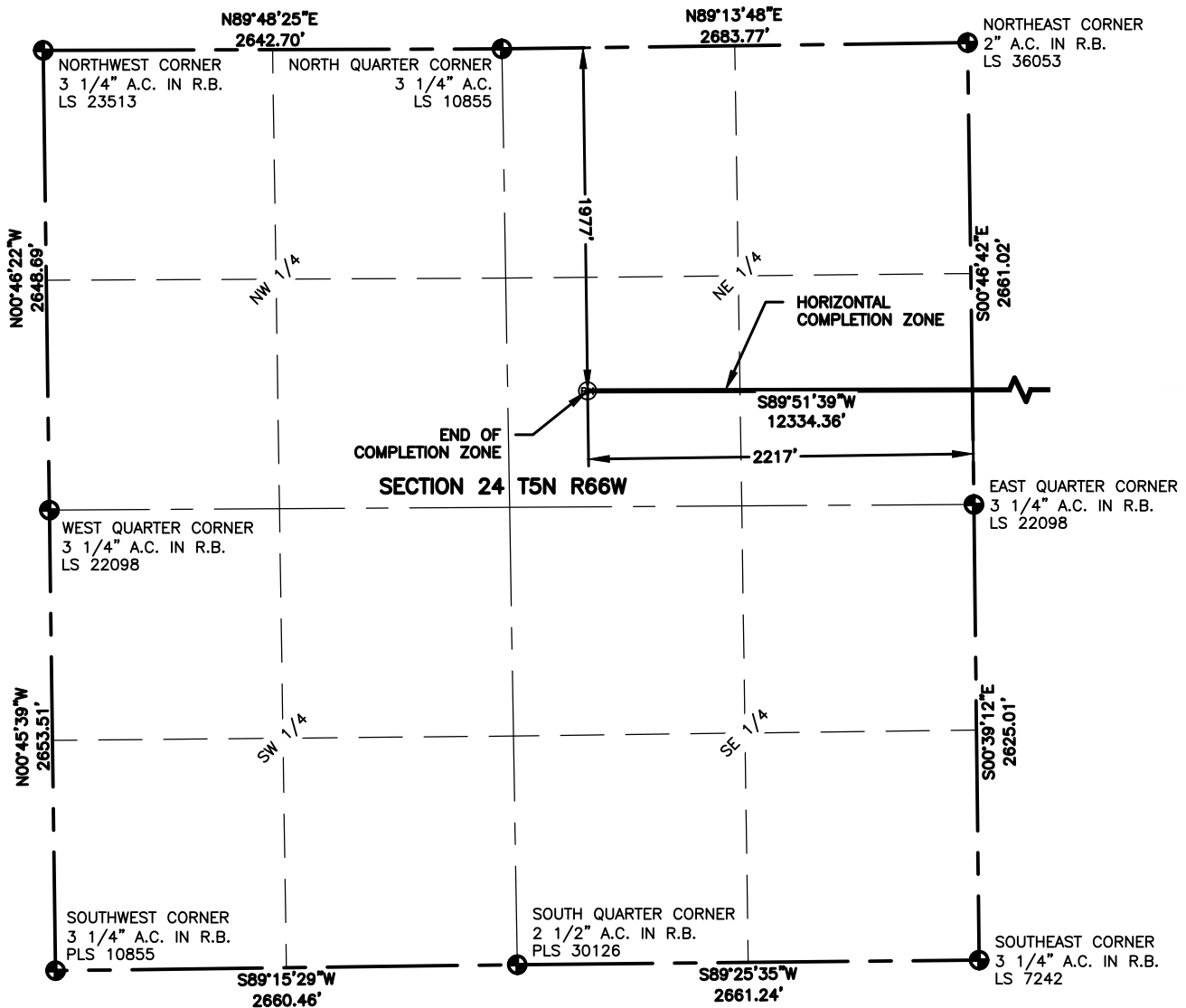
DATE
01/17/17
P:_Engineering\0216012 Andrey 21-i\DRAWINGS\EXHIBITS\PRELIMINARY PLAT

COGCC ID

PROJECT - TASK NUMBER

BOOK AND PAGE
MRI_04 20-25

SURFACE - LOCATION
NW/4 SW/4 SEC 21 T5N R65W



LEGEND

- ALIQUOT CORNER
- ⊙ PROPOSED WELL
- ⊙ BOTTOM HOLE
- A.C. ALUMINUM CAP
- R.B. RANGE BOX

NOTES:

- DISTANCES ARE MEASURED PERPENDICULAR TO NEAREST SECTION LINE AND ARE SHOWN ON THE SAME SIDE OF THE SECTION LINE WHERE THE WELL IS LOCATED.
- THIS MAP DOES NOT REPRESENT A MONUMENTED BOUNDARY SURVEY. SIXTEENTH CORNER LOCATIONS ARE COMPUTED, UNLESS OTHERWISE NOTED.
- BOTTOM HOLE LOCATIONS AND HORIZONTAL COMPLETION ZONE PROVIDED BY OTHERS.



0 1000

SCALE: 1" = 1000'
U.S. SURVEY FEET



LAMP RYNEARSON
& ASSOCIATES

4715 Innovation Drive 970.226.0342 | P
Fort Collins, CO 80525 970.226.0879 | F
www.LRA-Inc.com

PROPOSED WELL LOCATION EXHIBIT
AD-J EVANS 5-20-24
4 OF 4

DRAWN BY
JMC
PATH\FILENAME

DATE
01/17/17

COGCC ID

PROJECT - TASK NUMBER

BOOK AND PAGE

SURFACE - LOCATION
NW/4 SW/4 SEC 21 T5N R65W

0216012
P:_Engineering\0216012 Andrey 21-I\DRAWINGS\EXHIBITS\PRELIMINARY PLAT