

EXTRACTION OIL & GAS

Weld County

Sec 21-T5N-R65W

AD-J EVANS 3-20-24

ORIGINAL WELLBORE

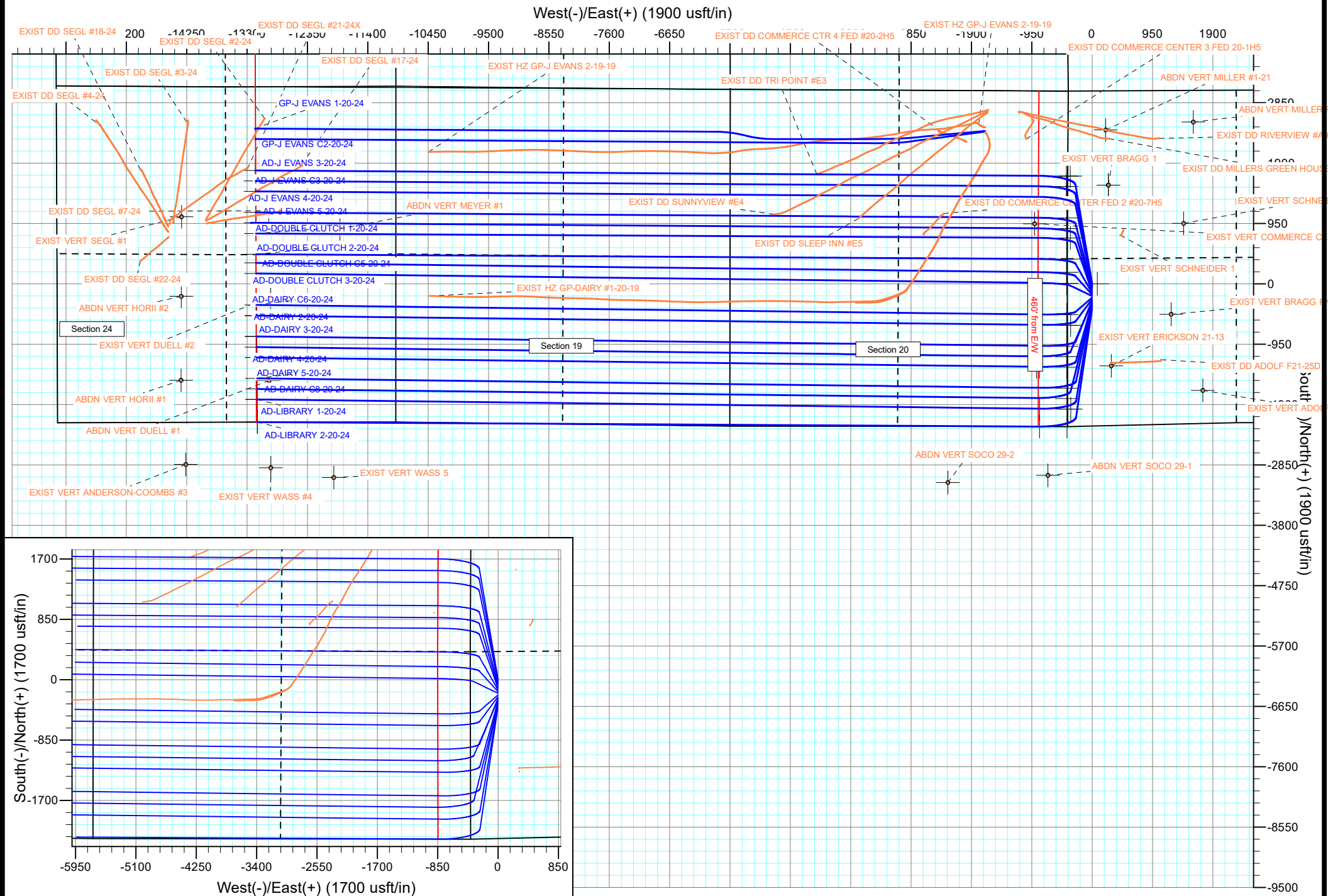
PROPOSAL #1

Anticollision Report

07 February, 2017



Project: Weld County
Site: Sec 21-T5N-R65W
Well: ARDREY SPIDER
ORIGINAL WELLBORE
PROPOSAL #1



Anticollision Report

Company:	EXTRACTION OIL & GAS	Local Co-ordinate Reference:	Well AD-J EVANS 3-20-24
Project:	Weld County	TVD Reference:	KB-EST @ 4654.0usft (Original Well Elev)
Reference Site:	Sec 21-T5N-R65W	MD Reference:	KB-EST @ 4654.0usft (Original Well Elev)
Site Error:	0.0 usft	North Reference:	True
Reference Well:	AD-J EVANS 3-20-24	Survey Calculation Method:	Minimum Curvature
Well Error:	0.0 usft	Output errors are at	2.00 sigma
Reference Wellbore	ORIGINAL WELLBORE	Database:	EDT_32Bit_ODBC
Reference Design:	PROPOSAL #1	Offset TVD Reference:	Offset Datum

Reference	PROPOSAL #1		
Filter type:	NO GLOBAL FILTER: Using user defined selection & filtering criteria		
Interpolation Method:	MD + Stations Interval 100.0usft	Error Model:	ISCWSA
Depth Range:	Unlimited	Scan Method:	Closest Approach 3D
Results Limited by:	Maximum center-center distance of 10,000.0 usft	Error Surface:	Pedal Curve
Warning Levels Evaluated at:	2.00 Sigma	Casing Method:	Not applied

Survey Tool Program	Date	2/7/2017		
From (usft)	To (usft)	Survey (Wellbore)	Tool Name	Description
0.0	19,890.1	PROPOSAL #1 (ORIGINAL WELLBORE)	MWD	OWSG MWD - Standard

Summary						
Site Name	Reference Measured Depth (usft)	Offset Measured Depth (usft)	Distance Between Centres (usft)	Distance Between Ellipses (usft)	Separation Factor	Warning
Offset Well - Wellbore - Design						
Sec 20-T5N-R65W						
ABDN VERT MEYER #1 - Wellbore #1 - Design #1	18,552.8	7,145.0	907.9	450.8	1.986	CC, ES, SF
EXIST DD COMMERCE CENTER 3 FED 20-1H5 - Wellb	7,763.3	7,072.9	579.0	528.7	11.518	CC
EXIST DD COMMERCE CENTER 3 FED 20-1H5 - Wellb	7,800.0	7,072.6	580.2	528.4	11.219	ES
EXIST DD COMMERCE CENTER 3 FED 20-1H5 - Wellb	8,000.0	7,071.4	625.5	566.4	10.573	SF
EXIST DD COMMERCE CENTER FED 2 #20-7H5 - Wel	9,050.5	7,071.3	605.8	526.5	7.646	CC, ES, SF
EXIST DD COMMERCE CTR 4 FED #20-2H5 - Wellbore	9,119.7	7,111.3	694.2	612.8	8.529	CC, ES
EXIST DD COMMERCE CTR 4 FED #20-2H5 - Wellbore	9,300.0	7,108.3	717.2	628.4	8.077	SF
EXIST DD MILLERS GREEN HOUSE #A10 - Wellbore #	6,827.5	6,847.2	885.4	824.0	14.423	CC, ES
EXIST DD MILLERS GREEN HOUSE #A10 - Wellbore #	6,900.0	6,914.6	888.8	826.8	14.336	SF
EXIST DD RIVERVIEW #A9 - Wellbore #1 - Wellbore #1	5,037.2	5,044.4	1,456.1	1,398.1	25.087	CC, ES
EXIST DD RIVERVIEW #A9 - Wellbore #1 - Wellbore #1	6,750.0	7,043.4	1,508.4	1,439.8	22.008	SF
EXIST DD SLEEP INN #E5 - Wellbore #1 - Wellbore #1	10,364.8	7,537.4	667.9	530.9	4.875	CC
EXIST DD SLEEP INN #E5 - Wellbore #1 - Wellbore #1	10,400.0	7,543.4	668.8	530.6	4.838	ES, SF
EXIST DD SUNNYVIEW #E4 - Wellbore #1 - Wellbore #	11,676.3	8,052.9	628.4	428.5	3.143	CC
EXIST DD SUNNYVIEW #E4 - Wellbore #1 - Wellbore #	11,700.0	8,057.6	628.9	428.0	3.130	ES, SF
EXIST DD TRI POINT #E3 - Wellbore #1 - Wellbore #1	11,005.8	7,661.1	20.7	-145.8	0.124	Level 1, CC, ES, SF
EXIST HZ GP-DAIRY #1-20-19 - ORIGINAL WELLBORE	9,546.4	9,546.4	1,863.7	1,752.8	16.806	CC, ES
EXIST HZ GP-DAIRY #1-20-19 - ORIGINAL WELLBORE	11,000.0	8,205.0	2,103.5	1,943.3	13.129	SF
EXIST HZ GP-DAIRY #1-20-19 - SIDETRACK - SIDETR	9,546.4	9,546.4	1,863.7	1,752.8	16.806	CC
EXIST HZ GP-DAIRY #1-20-19 - SIDETRACK - SIDETR	17,200.0	15,000.0	1,960.8	1,453.2	3.863	ES
EXIST HZ GP-DAIRY #1-20-19 - SIDETRACK - SIDETR	17,300.0	15,000.0	1,966.4	1,456.5	3.857	SF
EXIST HZ GP-J EVANS 2-19-19 - MWD SURVEYS - MW	17,162.7	13,088.6	315.0	-177.7	0.639	Level 1, CC, ES, SF
EXIST HZ GP-J EVANS 2-19-19 - SURFACE GYROS - S	1,707.3	1,053.2	2,847.8	2,840.4	386.679	CC, ES
EXIST HZ GP-J EVANS 2-19-19 - SURFACE GYROS - S	13,000.0	1,163.0	7,438.1	7,382.1	132.689	SF
EXIST VERT COMMERCE CENTER #1 - Wellbore #1 - D	4,730.1	4,600.4	734.9	618.8	6.329	CC
EXIST VERT COMMERCE CENTER #1 - Wellbore #1 - D	7,620.4	7,016.0	754.2	580.3	4.338	ES, SF
GP-J EVANS 1-20-24 - ORIGINAL WELLBORE - PROPO	11,734.9	8,947.8	569.7	361.6	2.738	CC
GP-J EVANS 1-20-24 - ORIGINAL WELLBORE - PROPO	19,890.1	17,111.8	676.2	30.1	1.047	Level 2, ES, SF
GP-J EVANS C2-20-24 - ORIGINAL WELLBORE - PROP	10,060.0	7,448.5	497.4	370.7	3.926	CC
GP-J EVANS C2-20-24 - ORIGINAL WELLBORE - PROP	19,890.1	17,280.8	497.5	-159.0	0.758	Level 1, ES, SF

Anticollision Report

Company:	EXTRACTION OIL & GAS	Local Co-ordinate Reference:	Well AD-J EVANS 3-20-24
Project:	Weld County	TVD Reference:	KB-EST @ 4654.0usft (Original Well Elev)
Reference Site:	Sec 21-T5N-R65W	MD Reference:	KB-EST @ 4654.0usft (Original Well Elev)
Site Error:	0.0 usft	North Reference:	True
Reference Well:	AD-J EVANS 3-20-24	Survey Calculation Method:	Minimum Curvature
Well Error:	0.0 usft	Output errors are at	2.00 sigma
Reference Wellbore	ORIGINAL WELLBORE	Database:	EDT_32Bit_ODBC
Reference Design:	PROPOSAL #1	Offset TVD Reference:	Offset Datum

Summary						
Site Name	Reference Measured Depth (usft)	Offset Measured Depth (usft)	Distance Between Centres (usft)	Distance Between Ellipses (usft)	Separation Factor	Warning
Offset Well - Wellbore - Design						
Sec 21-T5N-R65W						
ABDN VERT MILLER #1-21 - Wellbore #1 - Design #1	6,874.6	6,666.6	966.6	801.8	5.868	CC
ABDN VERT MILLER #1-21 - Wellbore #1 - Design #1	6,900.0	6,689.1	966.9	801.5	5.844	ES
ABDN VERT MILLER #1-21 - Wellbore #1 - Design #1	7,000.0	6,773.3	976.5	808.0	5.796	SF
ABDN VERT MILLER F 21-3 - Wellbore #1 - Design #1	6,731.5	6,520.0	2,100.1	1,934.9	12.716	CC
ABDN VERT MILLER F 21-3 - Wellbore #1 - Design #1	6,750.0	6,537.7	2,100.4	1,934.7	12.681	ES
ABDN VERT MILLER F 21-3 - Wellbore #1 - Design #1	6,950.0	6,719.3	2,138.1	1,967.4	12.522	SF
ABDN VERT SOCO 29-1 - Wellbore #1 - Design #1	100.0	103.0	3,092.2	3,091.3	3,530.681	CC
ABDN VERT SOCO 29-1 - Wellbore #1 - Design #1	200.0	203.0	3,093.8	3,090.1	846.146	ES
ABDN VERT SOCO 29-1 - Wellbore #1 - Design #1	9,400.0	7,007.0	5,126.0	4,924.9	25.495	SF
ABDN VERT SOCO 29-2 - Wellbore #1 - Design #1	100.0	102.0	3,863.3	3,862.5	4,919.257	CC
ABDN VERT SOCO 29-2 - Wellbore #1 - Design #1	200.0	202.0	3,864.5	3,860.9	1,077.335	ES
ABDN VERT SOCO 29-2 - Wellbore #1 - Design #1	10,700.0	7,012.0	5,140.8	4,906.6	21.954	SF
AD-DAIRY 2-20-24 - ORIGINAL WELLBORE - PROPOS	100.0	101.0	240.5	240.2	789.151	CC, ES
AD-DAIRY 2-20-24 - ORIGINAL WELLBORE - PROPOS	19,890.1	19,696.1	2,284.2	1,579.8	3.243	SF
AD-DAIRY 3-20-24 - ORIGINAL WELLBORE - PROPOS	100.0	101.0	262.3	262.0	860.882	CC, ES
AD-DAIRY 3-20-24 - ORIGINAL WELLBORE - PROPOS	19,890.1	19,719.6	2,612.1	1,907.8	3.709	SF
AD-DAIRY 4-20-24 - ORIGINAL WELLBORE - PROPOS	100.0	101.0	309.7	309.4	1,022.314	CC, ES
AD-DAIRY 4-20-24 - ORIGINAL WELLBORE - PROPOS	19,890.1	19,741.5	2,943.6	2,239.5	4.181	SF
AD-DAIRY 5-20-24 - ORIGINAL WELLBORE - PROPOS	100.0	101.0	335.2	334.9	1,106.497	CC, ES
AD-DAIRY 5-20-24 - ORIGINAL WELLBORE - PROPOS	19,890.1	19,791.8	3,271.5	2,567.4	4.646	SF
AD-DAIRY C6-20-24 - ORIGINAL WELLBORE - PROPO	100.0	100.0	215.0	214.7	713.865	CC, ES
AD-DAIRY C6-20-24 - ORIGINAL WELLBORE - PROPO	19,890.1	19,898.7	2,127.0	1,425.0	3.030	SF
AD-DAIRY C7-20-24 - ORIGINAL WELLBORE - PROPO	100.0	101.0	287.8	287.5	944.555	CC, ES
AD-DAIRY C7-20-24 - ORIGINAL WELLBORE - PROPO	19,890.1	19,866.3	2,787.5	2,086.1	3.974	SF
AD-DAIRY C8-20-24 - ORIGINAL WELLBORE - PROPO	100.0	101.0	357.1	356.8	1,171.828	CC, ES
AD-DAIRY C8-20-24 - ORIGINAL WELLBORE - PROPO	19,890.1	19,943.7	3,445.4	2,743.7	4.910	SF
AD-DOUBLE CLUTCH 1-20-24 - ORIGINAL WELLBORE	100.0	100.0	120.3	120.0	399.360	CC, ES
AD-DOUBLE CLUTCH 1-20-24 - ORIGINAL WELLBORE	19,890.1	19,742.3	990.9	286.3	1.406	Level 3, SF
AD-DOUBLE CLUTCH 2-20-24 - ORIGINAL WELLBORE	100.0	100.0	142.1	141.8	471.919	CC, ES
AD-DOUBLE CLUTCH 2-20-24 - ORIGINAL WELLBORE	19,890.1	19,710.6	1,318.8	614.2	1.872	SF
AD-DOUBLE CLUTCH 3-20-24 - ORIGINAL WELLBORE	100.0	101.0	189.5	189.2	621.784	CC, ES
AD-DOUBLE CLUTCH 3-20-24 - ORIGINAL WELLBORE	19,890.1	19,614.5	1,621.1	917.4	2.304	SF
AD-DOUBLE CLUTCH C5-20-24 - ORIGINAL WELLBOR	100.0	100.0	167.6	167.3	556.606	CC, ES
AD-DOUBLE CLUTCH C5-20-24 - ORIGINAL WELLBOR	19,873.1	19,916.9	1,468.5	769.0	2.099	SF
AD-J EVANS 4-20-24 - ORIGINAL WELLBORE - PROPO	100.0	100.0	47.4	47.1	157.290	CC
AD-J EVANS 4-20-24 - ORIGINAL WELLBORE - PROPO	19,890.1	19,826.8	327.8	-377.0	0.465	Level 1, ES, SF
AD-J EVANS 5-20-24 - ORIGINAL WELLBORE - PROPO	100.0	100.0	69.3	69.0	230.065	CC
AD-J EVANS 5-20-24 - ORIGINAL WELLBORE - PROPO	19,886.0	19,775.0	659.3	-45.9	0.935	Level 1, ES, SF
AD-J EVANS C3-20-24 - ORIGINAL WELLBORE - PROP	100.0	100.0	21.9	21.6	72.603	CC
AD-J EVANS C3-20-24 - ORIGINAL WELLBORE - PROP	19,890.1	20,064.7	263.7	-200.9	0.568	Level 1, ES, SF
AD-J EVANS C4-20-24 - ORIGINAL WELLBORE - PROP	100.0	100.0	94.8	94.5	314.688	CC, ES
AD-J EVANS C4-20-24 - ORIGINAL WELLBORE - PROP	19,890.1	19,974.2	849.6	162.1	1.236	Level 2, SF
AD-LIBRARY 1-20-24 - ORIGINAL WELLBORE - PROP	100.0	101.0	382.6	382.3	1,255.509	CC, ES
AD-LIBRARY 1-20-24 - ORIGINAL WELLBORE - PROP	19,890.1	19,845.8	3,603.0	2,899.0	5.118	SF
AD-LIBRARY 2-20-24 - ORIGINAL WELLBORE - PROP	100.0	101.0	408.1	407.8	1,348.392	CC, ES
AD-LIBRARY 2-20-24 - ORIGINAL WELLBORE - PROP	19,890.1	19,903.3	3,960.0	3,256.2	5.627	SF
EXIST DD ADOLF F21-25D - Wellbore #1 - Wellbore #1	121.6	127.2	1,279.1	1,278.7	3,484.302	CC, ES
EXIST DD ADOLF F21-25D - Wellbore #1 - Wellbore #1	6,800.0	6,689.9	3,101.1	3,054.9	67.138	SF
EXIST VERT ADOLF F 21-14 - Wellbore #1 - Design #1	100.0	90.0	2,416.6	2,415.8	2,941.446	CC
EXIST VERT ADOLF F 21-14 - Wellbore #1 - Design #1	200.0	190.0	2,418.0	2,414.6	707.379	ES
EXIST VERT ADOLF F 21-14 - Wellbore #1 - Design #1	6,950.0	6,718.3	3,900.5	3,738.2	24.023	SF
EXIST VERT BRAGG 1 - Wellbore #1 - Design #1	6,323.2	6,115.3	510.8	355.2	3.282	CC
EXIST VERT BRAGG 1 - Wellbore #1 - Design #1	6,500.0	6,286.3	512.8	352.8	3.206	ES

CC - Min centre to center distance or convergent point, SF - min separation factor, ES - min ellipse separation

Anticollision Report

Company:	EXTRACTION OIL & GAS	Local Co-ordinate Reference:	Well AD-J EVANS 3-20-24
Project:	Weld County	TVD Reference:	KB-EST @ 4654.0usft (Original Well Elev)
Reference Site:	Sec 21-T5N-R65W	MD Reference:	KB-EST @ 4654.0usft (Original Well Elev)
Site Error:	0.0 usft	North Reference:	True
Reference Well:	AD-J EVANS 3-20-24	Survey Calculation Method:	Minimum Curvature
Well Error:	0.0 usft	Output errors are at	2.00 sigma
Reference Wellbore	ORIGINAL WELLBORE	Database:	EDT_32Bit_ODBC
Reference Design:	PROPOSAL #1	Offset TVD Reference:	Offset Datum

Summary

Site Name	Reference Measured Depth (usft)	Offset Measured Depth (usft)	Distance Between Centres (usft)	Distance Between Ellipses (usft)	Separation Factor	Warning
Offset Well - Wellbore - Design						
Sec 21-T5N-R65W						
EXIST VERT BRAGG 1 - Wellbore #1 - Design #1	6,700.0	6,479.6	520.1	355.4	3.157	SF
EXIST VERT BRAGG PM F 21-11 - Wellbore #1 - Design	100.0	89.0	1,330.7	1,329.4	1,033.105	CC
EXIST VERT BRAGG PM F 21-11 - Wellbore #1 - Design	200.0	189.0	1,331.6	1,327.8	349.520	ES
EXIST VERT BRAGG PM F 21-11 - Wellbore #1 - Design	6,800.0	6,583.0	2,567.9	2,407.6	16.024	SF
EXIST VERT ERICKSON 21-13 - Wellbore #1 - Design #	100.0	89.0	1,324.3	1,323.4	1,603.293	CC
EXIST VERT ERICKSON 21-13 - Wellbore #1 - Design #	200.0	189.0	1,326.0	1,322.6	389.384	ES
EXIST VERT ERICKSON 21-13 - Wellbore #1 - Design #	7,050.0	6,803.0	3,016.6	2,853.5	18.496	SF
EXIST VERT SCHNEIDER 1 - Wellbore #1 - Wellbore #1	3,440.1	3,353.8	610.3	591.9	33.080	CC
EXIST VERT SCHNEIDER 1 - Wellbore #1 - Wellbore #1	3,500.0	3,412.6	610.5	591.7	32.516	ES
EXIST VERT SCHNEIDER 1 - Wellbore #1 - Wellbore #1	4,400.0	4,277.5	661.9	639.1	29.010	SF
EXIST VERT SCHNEIDER 22-21 - Wellbore #1 - Design	3,211.7	3,114.3	1,578.2	1,500.2	20.223	CC
EXIST VERT SCHNEIDER 22-21 - Wellbore #1 - Design	3,800.0	3,683.2	1,585.3	1,492.7	17.106	ES
EXIST VERT SCHNEIDER 22-21 - Wellbore #1 - Design	6,750.0	6,535.7	1,821.2	1,657.1	11.096	SF
EXIST VERT WASS 5 - Wellbore #1 - Design #1	18,622.9	7,070.0	4,822.8	4,364.5	10.525	CC
EXIST VERT WASS 5 - Wellbore #1 - Design #1	18,700.0	7,070.0	4,823.4	4,363.4	10.486	ES
EXIST VERT WASS 5 - Wellbore #1 - Design #1	19,300.0	7,070.0	4,870.1	4,399.2	10.344	SF
EXIST VERT WASS 6 - Wellbore #1 - Design #1	18,302.6	7,070.0	6,132.2	5,682.7	13.640	CC
EXIST VERT WASS 6 - Wellbore #1 - Design #1	18,400.0	7,070.0	6,133.0	5,681.1	13.572	ES
EXIST VERT WASS 6 - Wellbore #1 - Design #1	19,500.0	7,070.0	6,248.0	5,775.8	13.231	SF
SW NE SEC. 26 T5N R66W 6th P.M.						
ABDN VERT DUELL #1 - Wellbore #1 - Design #1	19,652.1	7,103.0	3,304.6	2,816.2	6.766	CC
ABDN VERT DUELL #1 - Wellbore #1 - Design #1	19,700.0	7,103.0	3,305.0	2,815.6	6.753	ES
ABDN VERT DUELL #1 - Wellbore #1 - Design #1	19,890.1	7,103.0	3,313.1	2,820.5	6.725	SF
ABDN VERT HORII #1 - Wellbore #1 - Design #1	19,890.1	7,155.0	3,502.6	3,021.4	7.279	CC, ES, SF
ABDN VERT HORII #2 - Wellbore #1 - Design #1	19,890.1	7,144.0	2,297.0	1,839.5	5.021	CC, ES, SF
EV-CENTENNIAL C5-24-13 - ORIGINAL WELLBORE - P	19,890.1	12,813.1	1,030.5	869.8	6.411	CC, ES, SF
EV-MARINER 2-24-13 - ORIGINAL WELLBORE - PROP	19,890.1	13,100.5	578.8	419.0	3.620	CC, ES, SF
EV-MARINER 3-24-13 - ORIGINAL WELLBORE - PROP	19,890.1	12,903.5	798.8	639.5	5.015	CC, ES, SF
EXIST DD SEGL #17-24 - Wellbore #1 - Wellbore #1	19,157.6	7,442.9	92.8	-272.1	0.254	Level 1, CC, ES, SF
EXIST DD SEGL #18-24 - Wellbore #1 - Wellbore #1	19,890.1	7,309.5	1,807.7	1,742.8	27.876	CC, ES, SF
EXIST DD SEGL #21-24X - Wellbore #1 - Wellbore #1	19,890.1	7,423.2	130.8	27.8	1.270	Level 3, CC, ES, SF
EXIST DD SEGL #22-24 - Wellbore #1 - Wellbore #1	19,890.1	7,211.1	2,305.2	2,054.5	9.195	CC, ES, SF
EXIST DD SEGL #2-24 - Wellbore #1 - Wellbore #1	19,750.4	7,527.1	821.6	448.7	2.204	CC, ES
EXIST DD SEGL #2-24 - Wellbore #1 - Wellbore #1	19,800.0	7,527.3	823.1	449.4	2.203	SF
EXIST DD SEGL #3-24 - Wellbore #1 - Wellbore #1	19,890.1	7,482.1	1,326.9	1,105.4	5.990	CC, ES, SF
EXIST DD SEGL #4-24 - Wellbore #1 - Wellbore #1	19,890.1	7,660.1	2,630.7	2,509.0	21.620	CC, ES, SF
EXIST DD SEGL #7-24 - Wellbore #1 - Wellbore #1	19,501.7	7,366.1	627.3	258.9	1.703	CC, ES, SF
EXIST VERT ANDERSON-COOMBS #2 - Wellbore #1 -	19,890.1	7,100.0	6,036.1	5,684.4	17.163	CC, ES, SF
EXIST VERT ANDERSON-COOMBS #3 - Wellbore #1 -	19,890.1	7,140.0	4,753.7	4,263.2	9.692	CC, ES, SF
EXIST VERT DUELL #2 - Wellbore #1 - Design #1	19,638.4	7,126.0	1,984.3	1,496.0	4.064	CC, ES
EXIST VERT DUELL #2 - Wellbore #1 - Design #1	19,700.0	7,126.0	1,985.2	1,496.0	4.058	SF
EXIST VERT SEGL #1 - Wellbore #1 - Design #1	19,890.1	7,164.0	1,371.2	1,022.1	3.928	CC, ES, SF
EXIST VERT WASS #2 - Wellbore #1 - Design #1	19,621.6	7,106.0	5,947.4	5,459.8	12.197	CC
EXIST VERT WASS #2 - Wellbore #1 - Design #1	19,800.0	7,106.0	5,950.1	5,458.4	12.100	ES
EXIST VERT WASS #2 - Wellbore #1 - Design #1	19,890.1	7,106.0	5,953.4	5,459.7	12.059	SF
EXIST VERT WASS #4 - Wellbore #1 - Design #1	19,615.7	7,102.3	4,676.0	4,188.6	9.593	CC
EXIST VERT WASS #4 - Wellbore #1 - Design #1	19,700.0	7,102.3	4,676.7	4,187.4	9.558	ES
EXIST VERT WASS #4 - Wellbore #1 - Design #1	19,890.1	7,102.3	4,684.0	4,190.8	9.498	SF