

# **EXTRACTION OIL & GAS**

**Weld County**

**Sec 21-T5N-R65W**

**AD-J EVANS 3-20-24**

**ORIGINAL WELLBORE**

**Plan: PROPOSAL #1**

## **Standard Planning Report**

**07 February, 2017**



Project: Weld County  
Site: Sec 21-T5N-R65W  
Well: AD-J EVANS 3-20-24  
Wellbore: ORIGINAL WELLBORE  
Design: PROPOSAL #1



Azimuths to True North  
Magnetic North: 8.28°  
Magnetic Field  
Strength: 52516.9nT  
Dip Angle: 66.88°  
Date: 5/21/2016  
Model: IGRF2015

#### WELL DETAILS: AD-J EVANS 3-20-24

+N/-S	+E/-W	Northing	Ground Level:	4638.0	Latitude	Longitude	Slot
0.0	0.0	1383618.44	Easting	3229414.13	40° 23' 0.636 N	104° 40' 35.292 W	

#### ANNOTATIONS

MD	Inc	Azi	TVD	+N/-S	+E/-W	VSect	Departure	Annotation
100.0	0.00	0.00	100.0	0.0	0.0	0.0	0.0	Start Build 2.00
837.5	14.75	350.39	829.4	93.1	-15.8	93.1	94.4	Start 5843.1 hold at 837.5 MD
6680.6	14.75	350.39	6479.9	1560.0	-264.2	1560.0	1582.2	Start DLS 10.00 TFO -80.32
7555.3	90.00	270.39	7010.0	1701.3	-835.7	1701.3	2190.7	Start 12334.8 hold at 7555.3 MD
19890.1	90.00	270.39	7010.0	1785.0	-13170.2	1785.0	14525.5	TD at 19890.1

#### SECTION DETAILS

Sec	MD	Inc	Azi	TVD	+N/-S	+E/-W	Dleg	TFace	VSect	Target
1	0.0	0.00	0.00	0.0	0.0	0.0	0.00	0.00	0.0	
2	100.0	0.00	0.00	100.0	0.0	0.0	0.00	0.00	0.0	
3	837.5	14.75	350.39	829.4	93.1	-15.8	2.00	350.39	28.1	
4	6680.6	14.75	350.39	6479.9	1560.0	-264.2	0.00	0.00	471.3	
5	7555.3	90.00	270.39	7010.0	1701.3	-835.7	10.00	-80.32	1056.6	HZ LANDING PNT -
6	19890.1	90.00	270.39	7010.0	1784.9	-13170.2	0.00	0.00	13290.6	BHL - AD-J EVANS

#### DESIGN TARGET DETAILS

Name	TVD	+N/-S	+E/-W	Northing	Easting	Latitude	Longitude	Shape
BHL - AD-J EVANS 3-20-24 (P2)	7010.0	1784.9	-13170.2	1385280.98	3216227.90	40° 23' 18.240 N	104° 43' 25.500 W	Point
- plan hits target center								

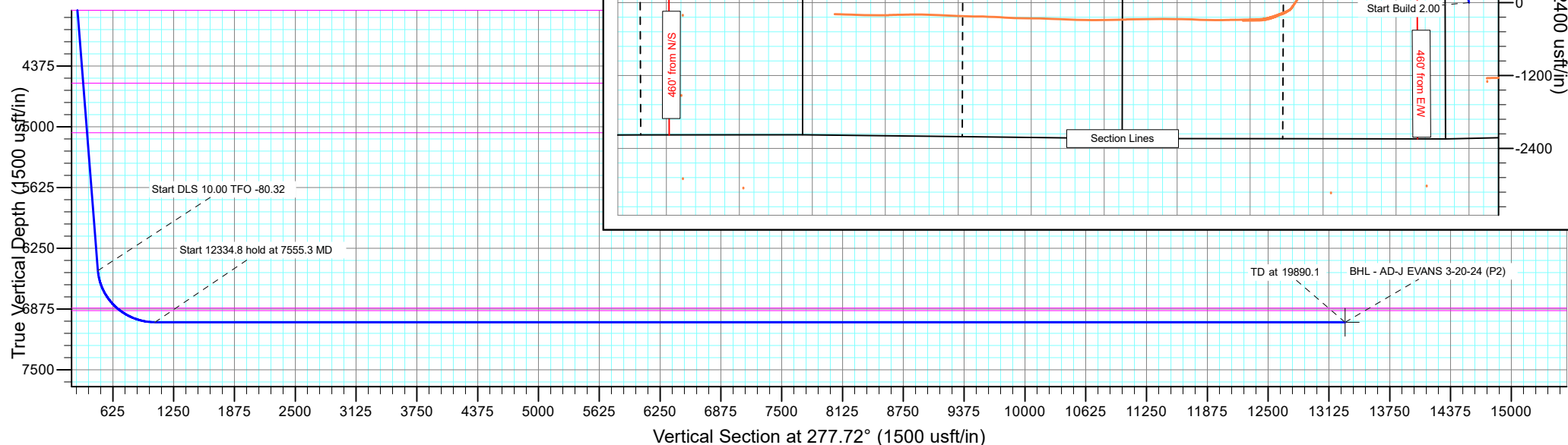
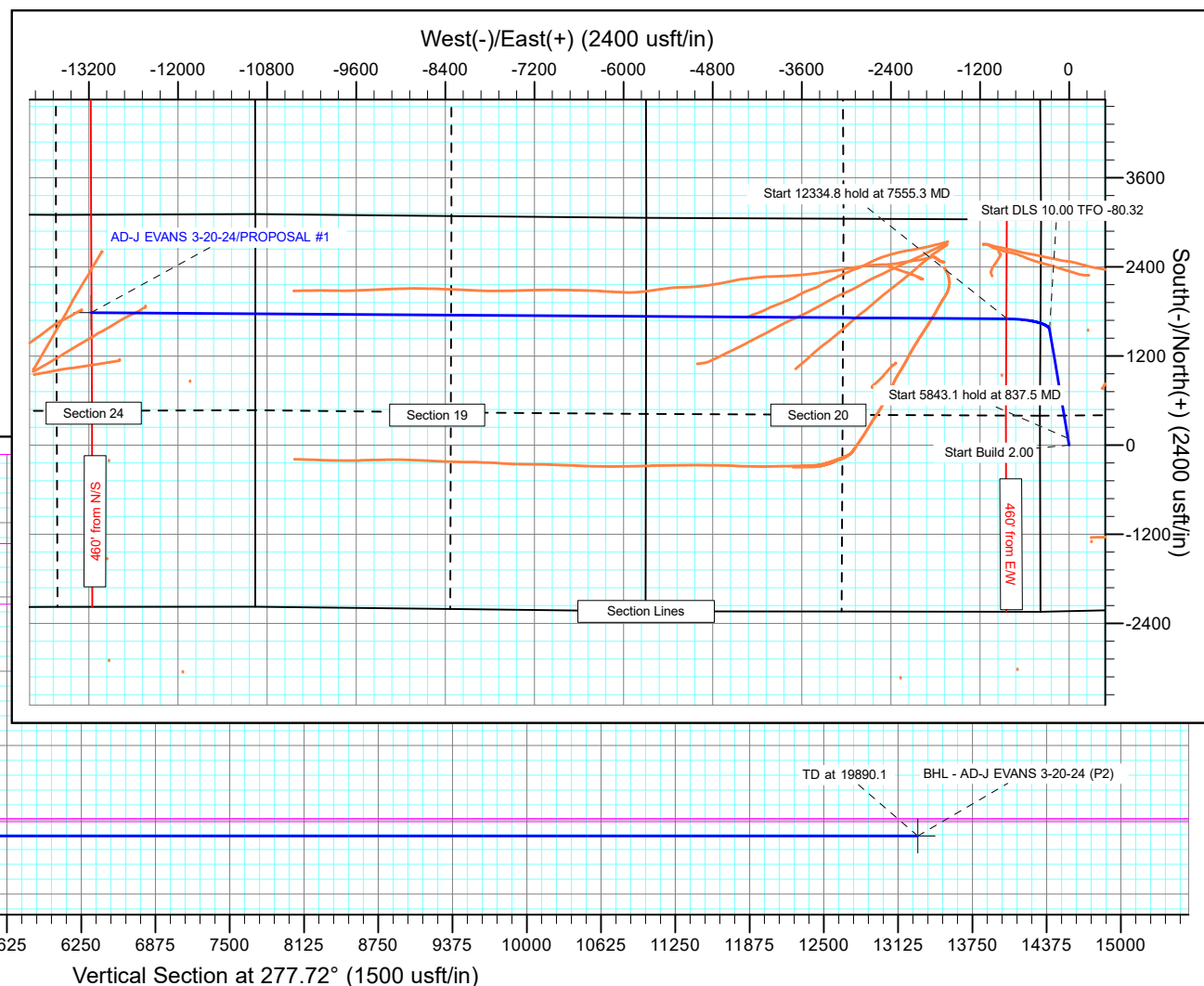
#### FORMATION TOP DETAILS

TVDPath	MDPath	Formation
3800.0	3909.4	PARKMAN
4550.0	4684.9	SUSSEX
5060.0	5212.3	SHANNON
6865.0	7131.3	SHARON SPRINGS
6890.0	7171.2	NIOBRARA

#### PROJECT DETAILS: Weld County

Geodetic System: US State Plane 1983  
Datum: North American Datum 1983  
Ellipsoid: GRS 1980  
Zone: Colorado Northern Zone  
System Datum: Mean Sea Level

SHL:  
371' FWL, 2236' FSL  
Sec 21-T5N-R65W  
LP:  
1337' FNL, 460' FEL  
Sec 20-T5N-R65W  
BHL:  
1316' FNL, 2220' FEL  
Sec 24-T5N-R66W



## Planning Report

<b>Database:</b>	EDT_32Bit_ODBC	<b>Local Co-ordinate Reference:</b>	Well AD-J EVANS 3-20-24
<b>Company:</b>	EXTRACTION OIL & GAS	<b>TVD Reference:</b>	KB-EST @ 4654.0usft (Original Well Elev)
<b>Project:</b>	Weld County	<b>MD Reference:</b>	KB-EST @ 4654.0usft (Original Well Elev)
<b>Site:</b>	Sec 21-T5N-R65W	<b>North Reference:</b>	True
<b>Well:</b>	AD-J EVANS 3-20-24	<b>Survey Calculation Method:</b>	Minimum Curvature
<b>Wellbore:</b>	ORIGINAL WELLBORE		
<b>Design:</b>	PROPOSAL #1		

Project	Weld County		
Map System:	US State Plane 1983	System Datum:	Mean Sea Level
Geo Datum:	North American Datum 1983		
Map Zone:	Colorado Northern Zone		

Site		Sec 21-T5N-R65W			
Site Position:		Northing:	1,383,619.20 usft	Latitude:	40° 23' 0.636 N
From:	Lat/Long	Easting:	3,229,494.91 usft	Longitude:	104° 40' 34.248 W
Position Uncertainty:	0.0 usft	Slot Radius:	13.200 in	Grid Convergence:	0.53 °

Well	AD-J EVANS 3-20-24					
Well Position	+N/-S	0.0 usft	Northing:	1,383,618.44 usft	Latitude:	40° 23' 0.636 N
	+E/-W	-80.8 usft	Easting:	3,229,414.13 usft	Longitude:	104° 40' 35.292 W
Position Uncertainty		0.0 usft	Wellhead Elevation:		Ground Level:	4,638.0 usft

Wellbore	ORIGINAL WELLBORE				
Magnetics	Model Name	Sample Date	Declination (°)	Dip Angle (°)	Field Strength (nT)
	IGRF2015	5/21/2016	8.28	66.88	52,516.93813020

Design	PROPOSAL #1			
Audit Notes:				
Version:	Phase:	PROTOTYPE	Tie On Depth:	0.0
Vertical Section:	Depth From (TVD) (usft)	+N/-S (usft)	+E/-W (usft)	Direction (°)
	0.0	0.0	0.0	0.00

Plan Survey Tool Program			Date	2/7/2017	
Depth From (usft)	Depth To (usft)	Survey (Wellbore)	Tool Name	Remarks	
1	0.0	19,890.1	PROPOSAL #1 (ORIGINAL WEL	MWD	
			OWSG MWD - Standard		

Plan Sections										
Measured Depth (usft)	Inclination (°)	Azimuth (°)	Vertical Depth (usft)	+N/-S (usft)	+E/-W (usft)	Dogleg Rate (°/100ft)	Build Rate (°/100ft)	Turn Rate (°/100ft)	TFO (°)	Target
0.0	0.00	0.00	0.0	0.0	0.0	0.00	0.00	0.00	0.00	
100.0	0.00	0.00	100.0	0.0	0.0	0.00	0.00	0.00	0.00	
837.5	14.75	350.39	829.4	93.1	-15.8	2.00	2.00	0.00	350.39	
6,680.6	14.75	350.39	6,479.9	1,560.0	-264.2	0.00	0.00	0.00	0.00	
7,555.3	90.00	270.39	7,010.0	1,701.3	-835.7	10.00	8.60	-9.15	-80.32	HZ LANDING PNT - /
19,890.1	90.00	270.39	7,010.0	1,784.9	-13,170.2	0.00	0.00	0.00	0.00	BHL - AD-J EVANS 3-

# Planning Report

<b>Database:</b>	EDT_32Bit_ODBC	<b>Local Co-ordinate Reference:</b>	Well AD-J EVANS 3-20-24
<b>Company:</b>	EXTRACTION OIL & GAS	<b>TVD Reference:</b>	KB-EST @ 4654.0usft (Original Well Elev)
<b>Project:</b>	Weld County	<b>MD Reference:</b>	KB-EST @ 4654.0usft (Original Well Elev)
<b>Site:</b>	Sec 21-T5N-R65W	<b>North Reference:</b>	True
<b>Well:</b>	AD-J EVANS 3-20-24	<b>Survey Calculation Method:</b>	Minimum Curvature
<b>Wellbore:</b>	ORIGINAL WELLBORE		
<b>Design:</b>	PROPOSAL #1		

Planned Survey									
Measured Depth (usft)	Inclination (°)	Azimuth (°)	Vertical Depth (usft)	+N-S (usft)	+E-W (usft)	Vertical Section (usft)	Dogleg Rate (°/100ft)	Build Rate (°/100ft)	Turn Rate (°/100ft)
0.0	0.00	0.00	0.0	0.0	0.0	0.0	0.00	0.00	0.00
100.0	0.00	0.00	100.0	0.0	0.0	0.0	0.00	0.00	0.00
Start Build 2.00									
200.0	2.00	350.39	200.0	1.7	-0.3	1.7	2.00	2.00	0.00
300.0	4.00	350.39	299.8	6.9	-1.2	6.9	2.00	2.00	0.00
400.0	6.00	350.39	399.5	15.5	-2.6	15.5	2.00	2.00	0.00
500.0	8.00	350.39	498.7	27.5	-4.7	27.5	2.00	2.00	0.00
600.0	10.00	350.39	597.5	42.9	-7.3	42.9	2.00	2.00	0.00
700.0	12.00	350.39	695.6	61.7	-10.5	61.7	2.00	2.00	0.00
800.0	14.00	350.39	793.1	83.9	-14.2	83.9	2.00	2.00	0.00
837.5	14.75	350.39	829.4	93.1	-15.8	93.1	2.00	2.00	0.00
Start 5843.1 hold at 837.5 MD									
900.0	14.75	350.39	889.8	108.8	-18.4	108.8	0.00	0.00	0.00
1,000.0	14.75	350.39	986.5	133.9	-22.7	133.9	0.00	0.00	0.00
1,100.0	14.75	350.39	1,083.2	159.0	-26.9	159.0	0.00	0.00	0.00
1,200.0	14.75	350.39	1,179.9	184.1	-31.2	184.1	0.00	0.00	0.00
1,300.0	14.75	350.39	1,276.6	209.2	-35.4	209.2	0.00	0.00	0.00
1,400.0	14.75	350.39	1,373.3	234.3	-39.7	234.3	0.00	0.00	0.00
1,500.0	14.75	350.39	1,470.0	259.4	-43.9	259.4	0.00	0.00	0.00
1,600.0	14.75	350.39	1,566.8	284.5	-48.2	284.5	0.00	0.00	0.00
1,700.0	14.75	350.39	1,663.5	309.6	-52.4	309.6	0.00	0.00	0.00
1,800.0	14.75	350.39	1,760.2	334.7	-56.7	334.7	0.00	0.00	0.00
1,900.0	14.75	350.39	1,856.9	359.8	-60.9	359.8	0.00	0.00	0.00
2,000.0	14.75	350.39	1,953.6	384.9	-65.2	384.9	0.00	0.00	0.00
2,100.0	14.75	350.39	2,050.3	410.0	-69.4	410.0	0.00	0.00	0.00
2,200.0	14.75	350.39	2,147.0	435.1	-73.7	435.1	0.00	0.00	0.00
2,300.0	14.75	350.39	2,243.7	460.2	-78.0	460.2	0.00	0.00	0.00
2,400.0	14.75	350.39	2,340.4	485.3	-82.2	485.3	0.00	0.00	0.00
2,500.0	14.75	350.39	2,437.1	510.4	-86.5	510.4	0.00	0.00	0.00
2,600.0	14.75	350.39	2,533.8	535.5	-90.7	535.5	0.00	0.00	0.00
2,700.0	14.75	350.39	2,630.5	560.6	-95.0	560.6	0.00	0.00	0.00
2,800.0	14.75	350.39	2,727.2	585.8	-99.2	585.8	0.00	0.00	0.00
2,900.0	14.75	350.39	2,823.9	610.9	-103.5	610.9	0.00	0.00	0.00
3,000.0	14.75	350.39	2,920.6	636.0	-107.7	636.0	0.00	0.00	0.00
3,100.0	14.75	350.39	3,017.3	661.1	-112.0	661.1	0.00	0.00	0.00
3,200.0	14.75	350.39	3,114.0	686.2	-116.2	686.2	0.00	0.00	0.00
3,300.0	14.75	350.39	3,210.7	711.3	-120.5	711.3	0.00	0.00	0.00
3,400.0	14.75	350.39	3,307.4	736.4	-124.7	736.4	0.00	0.00	0.00
3,500.0	14.75	350.39	3,404.1	761.5	-129.0	761.5	0.00	0.00	0.00
3,600.0	14.75	350.39	3,500.8	786.6	-133.2	786.6	0.00	0.00	0.00
3,700.0	14.75	350.39	3,597.5	811.7	-137.5	811.7	0.00	0.00	0.00
3,800.0	14.75	350.39	3,694.2	836.8	-141.7	836.8	0.00	0.00	0.00
3,900.0	14.75	350.39	3,790.9	861.9	-146.0	861.9	0.00	0.00	0.00
3,909.4	14.75	350.39	3,800.0	864.2	-146.4	864.2	0.00	0.00	0.00
PARKMAN									
4,000.0	14.75	350.39	3,887.6	887.0	-150.2	887.0	0.00	0.00	0.00
4,100.0	14.75	350.39	3,984.4	912.1	-154.5	912.1	0.00	0.00	0.00
4,200.0	14.75	350.39	4,081.1	937.2	-158.7	937.2	0.00	0.00	0.00
4,300.0	14.75	350.39	4,177.8	962.3	-163.0	962.3	0.00	0.00	0.00
4,400.0	14.75	350.39	4,274.5	987.4	-167.2	987.4	0.00	0.00	0.00
4,500.0	14.75	350.39	4,371.2	1,012.5	-171.5	1,012.5	0.00	0.00	0.00
4,600.0	14.75	350.39	4,467.9	1,037.6	-175.8	1,037.6	0.00	0.00	0.00
4,684.9	14.75	350.39	4,550.0	1,058.9	-179.4	1,058.9	0.00	0.00	0.00

# Planning Report

<b>Database:</b>	EDT_32Bit_ODBC	<b>Local Co-ordinate Reference:</b>	Well AD-J EVANS 3-20-24
<b>Company:</b>	EXTRACTION OIL & GAS	<b>TVD Reference:</b>	KB-EST @ 4654.0usft (Original Well Elev)
<b>Project:</b>	Weld County	<b>MD Reference:</b>	KB-EST @ 4654.0usft (Original Well Elev)
<b>Site:</b>	Sec 21-T5N-R65W	<b>North Reference:</b>	True
<b>Well:</b>	AD-J EVANS 3-20-24	<b>Survey Calculation Method:</b>	Minimum Curvature
<b>Wellbore:</b>	ORIGINAL WELLBORE		
<b>Design:</b>	PROPOSAL #1		

Planned Survey									
Measured Depth (usft)	Inclination (°)	Azimuth (°)	Vertical Depth (usft)	+N/-S (usft)	+E/-W (usft)	Vertical Section (usft)	Dogleg Rate (°/100ft)	Build Rate (°/100ft)	Turn Rate (°/100ft)
<b>SUSSEX</b>									
4,700.0	14.75	350.39	4,564.6	1,062.7	-180.0	1,062.7	0.00	0.00	0.00
4,800.0	14.75	350.39	4,661.3	1,087.8	-184.3	1,087.8	0.00	0.00	0.00
4,900.0	14.75	350.39	4,758.0	1,112.9	-188.5	1,112.9	0.00	0.00	0.00
5,000.0	14.75	350.39	4,854.7	1,138.0	-192.8	1,138.0	0.00	0.00	0.00
5,100.0	14.75	350.39	4,951.4	1,163.1	-197.0	1,163.1	0.00	0.00	0.00
5,200.0	14.75	350.39	5,048.1	1,188.3	-201.3	1,188.3	0.00	0.00	0.00
5,212.3	14.75	350.39	5,060.0	1,191.3	-201.8	1,191.3	0.00	0.00	0.00
<b>SHANNON</b>									
5,300.0	14.75	350.39	5,144.8	1,213.4	-205.5	1,213.4	0.00	0.00	0.00
5,400.0	14.75	350.39	5,241.5	1,238.5	-209.8	1,238.5	0.00	0.00	0.00
5,500.0	14.75	350.39	5,338.2	1,263.6	-214.0	1,263.6	0.00	0.00	0.00
5,600.0	14.75	350.39	5,434.9	1,288.7	-218.3	1,288.7	0.00	0.00	0.00
5,700.0	14.75	350.39	5,531.6	1,313.8	-222.5	1,313.8	0.00	0.00	0.00
5,800.0	14.75	350.39	5,628.3	1,338.9	-226.8	1,338.9	0.00	0.00	0.00
5,900.0	14.75	350.39	5,725.0	1,364.0	-231.0	1,364.0	0.00	0.00	0.00
6,000.0	14.75	350.39	5,821.7	1,389.1	-235.3	1,389.1	0.00	0.00	0.00
6,100.0	14.75	350.39	5,918.4	1,414.2	-239.5	1,414.2	0.00	0.00	0.00
6,200.0	14.75	350.39	6,015.1	1,439.3	-243.8	1,439.3	0.00	0.00	0.00
6,300.0	14.75	350.39	6,111.8	1,464.4	-248.0	1,464.4	0.00	0.00	0.00
6,400.0	14.75	350.39	6,208.5	1,489.5	-252.3	1,489.5	0.00	0.00	0.00
6,500.0	14.75	350.39	6,305.3	1,514.6	-256.5	1,514.6	0.00	0.00	0.00
6,600.0	14.75	350.39	6,402.0	1,539.7	-260.8	1,539.7	0.00	0.00	0.00
6,680.6	14.75	350.39	6,479.9	1,560.0	-264.2	1,560.0	0.00	0.00	0.00
<b>Start DLS 10.00 TFO -80.32</b>									
6,700.0	15.20	343.08	6,498.6	1,564.8	-265.4	1,564.8	10.00	2.29	-37.70
6,750.0	17.30	326.77	6,546.7	1,577.3	-271.4	1,577.3	10.00	4.20	-32.61
6,800.0	20.40	314.59	6,594.0	1,589.7	-281.6	1,589.7	10.00	6.21	-24.37
6,850.0	24.13	305.76	6,640.3	1,601.8	-296.2	1,601.8	10.00	7.46	-17.66
6,900.0	28.23	299.26	6,685.1	1,613.5	-314.8	1,613.5	10.00	8.21	-12.99
6,950.0	32.57	294.33	6,728.3	1,624.8	-337.4	1,624.8	10.00	8.67	-9.85
7,000.0	37.06	290.47	6,769.3	1,635.7	-363.8	1,635.7	10.00	8.98	-7.73
7,050.0	41.65	287.34	6,808.0	1,645.9	-393.8	1,645.9	10.00	9.18	-6.26
7,100.0	46.31	284.73	6,843.9	1,655.4	-427.1	1,655.4	10.00	9.32	-5.22
7,131.3	49.26	283.29	6,865.0	1,661.1	-449.7	1,661.1	10.00	9.41	-4.58
<b>SHARON SPRINGS</b>									
7,150.0	51.02	282.50	6,877.0	1,664.3	-463.6	1,664.3	10.00	9.45	-4.26
7,171.2	53.03	281.64	6,890.0	1,667.8	-480.0	1,667.8	10.00	9.48	-4.04
<b>NIORARA</b>									
7,200.0	55.77	280.55	6,906.8	1,672.3	-502.9	1,672.3	10.00	9.51	-3.80
7,250.0	60.55	278.81	6,933.1	1,679.4	-544.8	1,679.4	10.00	9.55	-3.48
7,300.0	65.35	277.22	6,955.9	1,685.6	-588.9	1,685.6	10.00	9.59	-3.17
7,350.0	70.16	275.76	6,974.8	1,690.8	-634.8	1,690.8	10.00	9.62	-2.93
7,400.0	74.98	274.38	6,989.8	1,695.0	-682.3	1,695.0	10.00	9.65	-2.76
7,450.0	79.81	273.06	7,000.7	1,698.1	-731.0	1,698.1	10.00	9.66	-2.64
7,500.0	84.65	271.78	7,007.4	1,700.2	-780.5	1,700.2	10.00	9.67	-2.56
7,550.0	89.49	270.52	7,010.0	1,701.2	-830.4	1,701.2	10.00	9.68	-2.52
7,555.3	90.00	270.39	7,010.0	1,701.3	-835.7	1,701.3	10.00	9.68	-2.51
<b>Start 12334.8 hold at 7555.3 MD</b>									
7,600.0	90.00	270.39	7,010.0	1,701.6	-880.4	1,701.6	0.00	0.00	0.00
7,700.0	90.00	270.39	7,010.0	1,702.3	-980.4	1,702.3	0.00	0.00	0.00
7,800.0	90.00	270.39	7,010.0	1,702.9	-1,080.4	1,702.9	0.00	0.00	0.00
7,900.0	90.00	270.39	7,010.0	1,703.6	-1,180.4	1,703.6	0.00	0.00	0.00

# Planning Report

<b>Database:</b>	EDT_32Bit_ODBC	<b>Local Co-ordinate Reference:</b>	Well AD-J EVANS 3-20-24
<b>Company:</b>	EXTRACTION OIL & GAS	<b>TVD Reference:</b>	KB-EST @ 4654.0usft (Original Well Elev)
<b>Project:</b>	Weld County	<b>MD Reference:</b>	KB-EST @ 4654.0usft (Original Well Elev)
<b>Site:</b>	Sec 21-T5N-R65W	<b>North Reference:</b>	True
<b>Well:</b>	AD-J EVANS 3-20-24	<b>Survey Calculation Method:</b>	Minimum Curvature
<b>Wellbore:</b>	ORIGINAL WELLBORE		
<b>Design:</b>	PROPOSAL #1		

Planned Survey										
Measured Depth (usft)	Inclination (°)	Azimuth (°)	Vertical Depth (usft)	+N/-S (usft)	+E/-W (usft)	Vertical Section (usft)	Dogleg Rate (°/100ft)	Build Rate (°/100ft)	Turn Rate (°/100ft)	
8,000.0	90.00	270.39	7,010.0	1,704.3	-1,280.4	1,704.3	0.00	0.00	0.00	
8,100.0	90.00	270.39	7,010.0	1,705.0	-1,380.4	1,705.0	0.00	0.00	0.00	
8,200.0	90.00	270.39	7,010.0	1,705.7	-1,480.4	1,705.7	0.00	0.00	0.00	
8,300.0	90.00	270.39	7,010.0	1,706.3	-1,580.4	1,706.3	0.00	0.00	0.00	
8,400.0	90.00	270.39	7,010.0	1,707.0	-1,680.4	1,707.0	0.00	0.00	0.00	
8,500.0	90.00	270.39	7,010.0	1,707.7	-1,780.4	1,707.7	0.00	0.00	0.00	
8,600.0	90.00	270.39	7,010.0	1,708.4	-1,880.4	1,708.4	0.00	0.00	0.00	
8,700.0	90.00	270.39	7,010.0	1,709.0	-1,980.4	1,709.0	0.00	0.00	0.00	
8,800.0	90.00	270.39	7,010.0	1,709.7	-2,080.4	1,709.7	0.00	0.00	0.00	
8,900.0	90.00	270.39	7,010.0	1,710.4	-2,180.4	1,710.4	0.00	0.00	0.00	
9,000.0	90.00	270.39	7,010.0	1,711.1	-2,280.4	1,711.1	0.00	0.00	0.00	
9,100.0	90.00	270.39	7,010.0	1,711.8	-2,380.4	1,711.8	0.00	0.00	0.00	
9,200.0	90.00	270.39	7,010.0	1,712.4	-2,480.4	1,712.4	0.00	0.00	0.00	
9,300.0	90.00	270.39	7,010.0	1,713.1	-2,580.4	1,713.1	0.00	0.00	0.00	
9,400.0	90.00	270.39	7,010.0	1,713.8	-2,680.4	1,713.8	0.00	0.00	0.00	
9,500.0	90.00	270.39	7,010.0	1,714.5	-2,780.4	1,714.5	0.00	0.00	0.00	
9,600.0	90.00	270.39	7,010.0	1,715.2	-2,880.4	1,715.2	0.00	0.00	0.00	
9,700.0	90.00	270.39	7,010.0	1,715.8	-2,980.4	1,715.8	0.00	0.00	0.00	
9,800.0	90.00	270.39	7,010.0	1,716.5	-3,080.4	1,716.5	0.00	0.00	0.00	
9,900.0	90.00	270.39	7,010.0	1,717.2	-3,180.4	1,717.2	0.00	0.00	0.00	
10,000.0	90.00	270.39	7,010.0	1,717.9	-3,280.4	1,717.9	0.00	0.00	0.00	
10,100.0	90.00	270.39	7,010.0	1,718.5	-3,380.4	1,718.5	0.00	0.00	0.00	
10,200.0	90.00	270.39	7,010.0	1,719.2	-3,480.4	1,719.2	0.00	0.00	0.00	
10,300.0	90.00	270.39	7,010.0	1,719.9	-3,580.4	1,719.9	0.00	0.00	0.00	
10,400.0	90.00	270.39	7,010.0	1,720.6	-3,680.3	1,720.6	0.00	0.00	0.00	
10,500.0	90.00	270.39	7,010.0	1,721.3	-3,780.3	1,721.3	0.00	0.00	0.00	
10,600.0	90.00	270.39	7,010.0	1,721.9	-3,880.3	1,721.9	0.00	0.00	0.00	
10,700.0	90.00	270.39	7,010.0	1,722.6	-3,980.3	1,722.6	0.00	0.00	0.00	
10,800.0	90.00	270.39	7,010.0	1,723.3	-4,080.3	1,723.3	0.00	0.00	0.00	
10,900.0	90.00	270.39	7,010.0	1,724.0	-4,180.3	1,724.0	0.00	0.00	0.00	
11,000.0	90.00	270.39	7,010.0	1,724.6	-4,280.3	1,724.6	0.00	0.00	0.00	
11,100.0	90.00	270.39	7,010.0	1,725.3	-4,380.3	1,725.3	0.00	0.00	0.00	
11,200.0	90.00	270.39	7,010.0	1,726.0	-4,480.3	1,726.0	0.00	0.00	0.00	
11,300.0	90.00	270.39	7,010.0	1,726.7	-4,580.3	1,726.7	0.00	0.00	0.00	
11,400.0	90.00	270.39	7,010.0	1,727.4	-4,680.3	1,727.4	0.00	0.00	0.00	
11,500.0	90.00	270.39	7,010.0	1,728.0	-4,780.3	1,728.0	0.00	0.00	0.00	
11,600.0	90.00	270.39	7,010.0	1,728.7	-4,880.3	1,728.7	0.00	0.00	0.00	
11,700.0	90.00	270.39	7,010.0	1,729.4	-4,980.3	1,729.4	0.00	0.00	0.00	
11,800.0	90.00	270.39	7,010.0	1,730.1	-5,080.3	1,730.1	0.00	0.00	0.00	
11,900.0	90.00	270.39	7,010.0	1,730.8	-5,180.3	1,730.8	0.00	0.00	0.00	
12,000.0	90.00	270.39	7,010.0	1,731.4	-5,280.3	1,731.4	0.00	0.00	0.00	
12,100.0	90.00	270.39	7,010.0	1,732.1	-5,380.3	1,732.1	0.00	0.00	0.00	
12,200.0	90.00	270.39	7,010.0	1,732.8	-5,480.3	1,732.8	0.00	0.00	0.00	
12,300.0	90.00	270.39	7,010.0	1,733.5	-5,580.3	1,733.5	0.00	0.00	0.00	
12,400.0	90.00	270.39	7,010.0	1,734.1	-5,680.3	1,734.1	0.00	0.00	0.00	
12,500.0	90.00	270.39	7,010.0	1,734.8	-5,780.3	1,734.8	0.00	0.00	0.00	
12,600.0	90.00	270.39	7,010.0	1,735.5	-5,880.3	1,735.5	0.00	0.00	0.00	
12,700.0	90.00	270.39	7,010.0	1,736.2	-5,980.3	1,736.2	0.00	0.00	0.00	
19,890.1	90.00	270.39	7,010.0	1,784.9	-13,170.2	1,784.9	0.00	0.00	0.00	
TD at 19890.1										

## Planning Report

<b>Database:</b>	EDT_32Bit_ODBC	<b>Local Co-ordinate Reference:</b>	Well AD-J EVANS 3-20-24
<b>Company:</b>	EXTRACTION OIL & GAS	<b>TVD Reference:</b>	KB-EST @ 4654.0usft (Original Well Elev)
<b>Project:</b>	Weld County	<b>MD Reference:</b>	KB-EST @ 4654.0usft (Original Well Elev)
<b>Site:</b>	Sec 21-T5N-R65W	<b>North Reference:</b>	True
<b>Well:</b>	AD-J EVANS 3-20-24	<b>Survey Calculation Method:</b>	Minimum Curvature
<b>Wellbore:</b>	ORIGINAL WELLBORE		
<b>Design:</b>	PROPOSAL #1		

Design Targets									
Target Name	Dip Angle	Dip Dir.	TVD	+N/-S	+E/-W	Northing	Easting	Latitude	Longitude
- hit/miss target	(°)	(°)	(usft)	(usft)	(usft)	(usft)	(usft)		
- Shape									
BHL - AD-J EVANS 3-20	0.00	0.00	7,010.0	1,784.9	-13,170.2	1,385,280.98	3,216,227.90	40° 23' 18.240 N	104° 43' 25.500 W
- plan hits target center									
- Point									

Formations						
Measured Depth	Vertical Depth	Name	Lithology	Dip	Dip Direction	
(usft)	(usft)			(°)	(°)	
3,909.4	3,800.0	PARKMAN				
4,684.9	4,550.0	SUSSEX				
5,212.3	5,060.0	SHANNON				
7,131.3	6,865.0	SHARON SPRINGS				
7,171.2	6,890.0	NIOBRARA				

Plan Annotations					
Measured Depth	Vertical Depth	Local Coordinates		Comment	
(usft)	(usft)	+N/-S	+E/-W		
(usft)	(usft)	(usft)	(usft)		
100.0	100.0	0.0	0.0	Start Build 2.00	
837.5	829.4	93.1	-15.8	Start 5843.1 hold at 837.5 MD	
6,680.6	6,479.9	1,560.0	-264.2	Start DLS 10.00 TFO -80.32	
7,555.3	7,010.0	1,701.3	-835.7	Start 12334.8 hold at 7555.3 MD	
19,890.1	7,010.0	1,784.9	-13,170.2	TD at 19890.1	