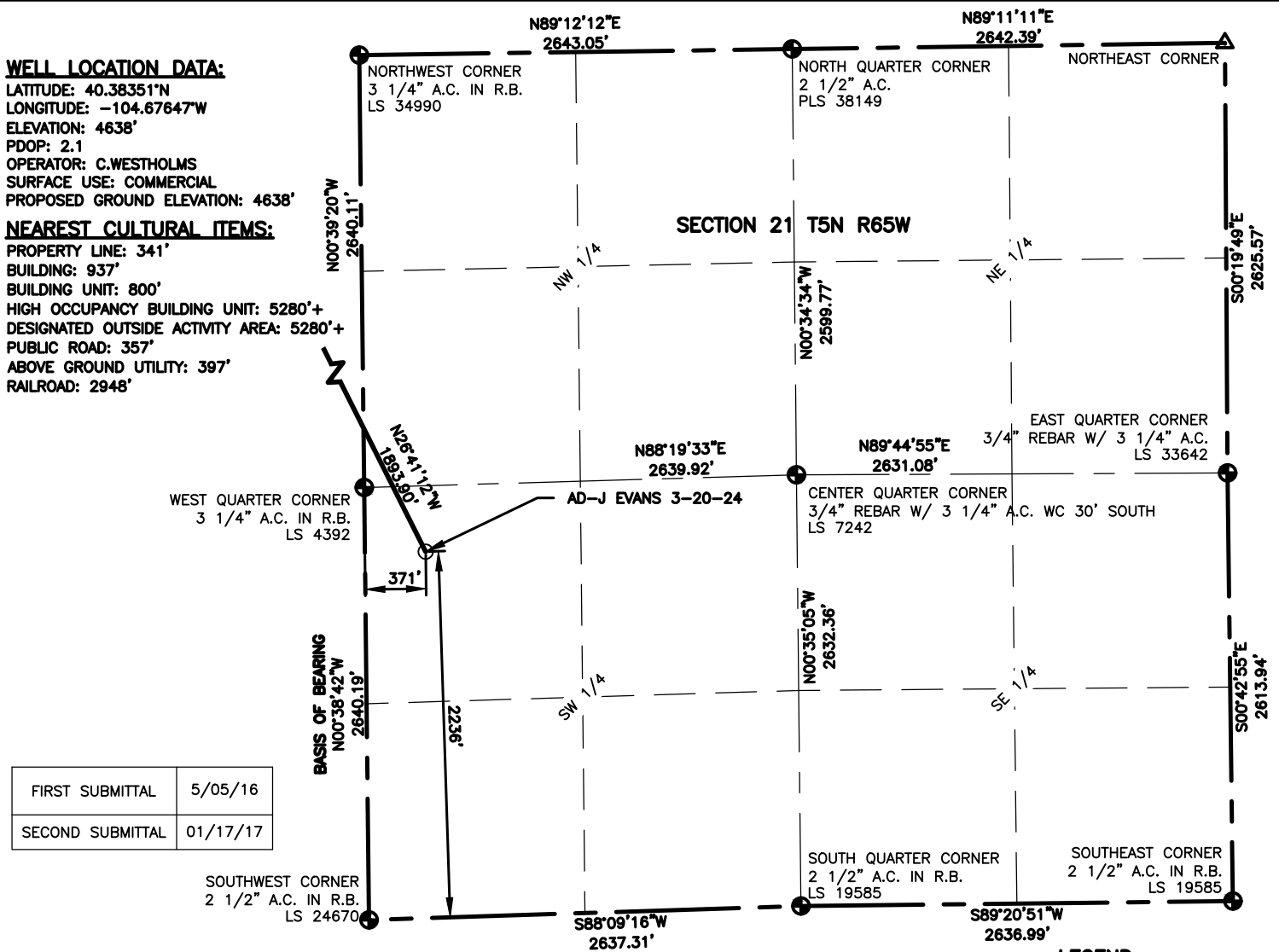


WELL LOCATION DATA:

LATITUDE: 40.38351°N
 LONGITUDE: -104.67647°W
 ELEVATION: 4638'
 PDOP: 2.1
 OPERATOR: C.WESTHOLMS
 SURFACE USE: COMMERCIAL
 PROPOSED GROUND ELEVATION: 4638'

NEAREST CULTURAL ITEMS:

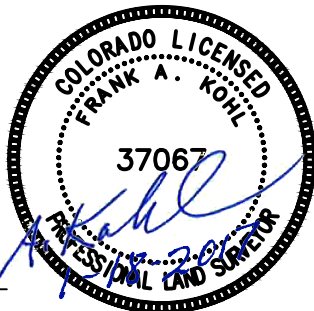
PROPERTY LINE: 341'
 BUILDING: 937'
 BUILDING UNIT: 800'
 HIGH OCCUPANCY BUILDING UNIT: 5280'+
 DESIGNATED OUTSIDE ACTIVITY AREA: 5280'+
 PUBLIC ROAD: 357'
 ABOVE GROUND UTILITY: 397'
 RAILROAD: 2948'



FIRST SUBMITTAL	5/05/16
SECOND SUBMITTAL	01/17/17

LAND SURVEYOR'S CERTIFICATION

LAMP, RYNEARSON & ASSOCIATES, INC., OF FT. COLLINS, COLORADO HAS, IN ACCORDANCE WITH A REQUEST FROM DUSTIN DYK AT EXTRACTION, DETERMINED THE SURFACE LOCATION OF THE WELL DESIGNATED AS AD-J EVANS 3-20-24 TO BE 2236' FROM THE SOUTH LINE AND 371' FROM THE WEST LINE OF SECTION 21, TOWNSHIP 5 NORTH, RANGE 65 WEST OF THE 6TH P.M., WELD COUNTY, COLORADO.



0 1000
 SCALE: 1"= 1000'
 U.S. SURVEY FEET

FRANK A. KOHL
 COLORADO PLS 37067
 DATE OF SURVEY: 07/20/2015 (SECTION CONTROL)
 DATE OF SURVEY: 04/13/2016 (WELL LOCATION)

LEGEND

- △ COMPUTED ALIQUOT CORNER FROM MONUMENT RECORDS
- ⊙ PROPOSED WELL
- ⊕ ALIQUOT CORNER A.C. ALUMINUM CAP
- ⊖ BOTTOM HOLE R.B. RANGE BOX

NOTES:

- DISTANCES ARE MEASURED PERPENDICULAR TO NEAREST SECTION LINE AND ARE SHOWN ON THE SAME SIDE OF THE SECTION LINE WHERE THE WELL IS LOCATED.
- THIS MAP DOES NOT REPRESENT A MONUMENTED BOUNDARY SURVEY. SIXTEENTH CORNER LOCATIONS ARE COMPUTED, UNLESS OTHERWISE NOTED.
- BOTTOM HOLE LOCATIONS AND HORIZONTAL COMPLETION ZONE PROVIDED BY OTHERS.

BASIS OF BEARING:

THE WEST LINE OF THE SOUTHWEST QUARTER OF SECTION 21-T5N-R65W BEARS N00°38'42"W BETWEEN THE SOUTHWEST CORNER OF SECTION 21 MONUMENTED WITH 2 1/2" A.C. IN R.B. STAMPED "LS 24670" AND THE WEST QUARTER CORNER OF SECTION 21 MONUMENTED WITH 3 1/4" A.C. IN R.B. STAMPED "LS 4392" BASED ON THE COLORADO NORTH 0501 STATE PLANE COORDINATE SYSTEM.

ELEVATIONS ARE BASED ON NAVD 88, AS OBSERVED FROM GPS OBSERVATIONS



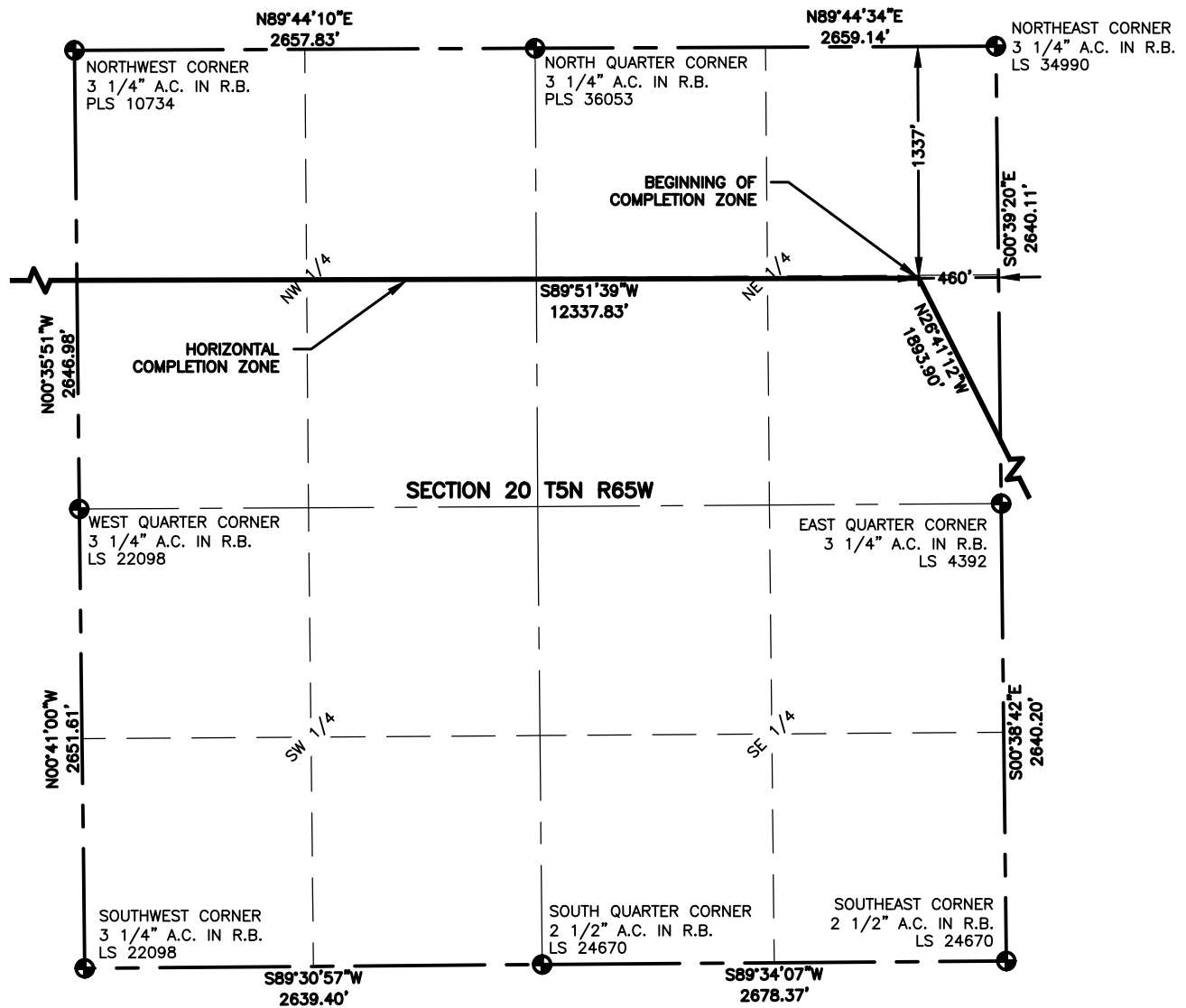
LAMP RYNEARSON
 & ASSOCIATES

4715 Innovation Drive 970.226.0342 | P
 Fort Collins, CO 80525 970.226.0879 | F
 www.LRA-Inc.com

PROPOSED WELL LOCATION EXHIBIT
 AD-J EVANS 3-20-24
 1 OF 4

DRAWN BY JMC
DATE 01/17/17
COGCC ID 0216012
PROJECT - TASK NUMBER 21-1\DRAWINGS\EXHIBITS\PRELIMINARY PLAT
BOOK AND PAGE 0216012

SURFACE - LOCATION
 NW/4 SW/4 SEC 21 T5N R65W

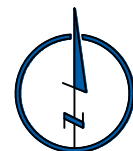


LEGEND

- ALIQUOT CORNER
- ⊙ PROPOSED WELL
- ⊙ BOTTOM HOLE
- A.C. ALUMINUM CAP
- R.B. RANGE BOX

NOTES:

- DISTANCES ARE MEASURED PERPENDICULAR TO NEAREST SECTION LINE AND ARE SHOWN ON THE SAME SIDE OF THE SECTION LINE WHERE THE WELL IS LOCATED.
- THIS MAP DOES NOT REPRESENT A MONUMENTED BOUNDARY SURVEY. SIXTEENTH CORNER LOCATIONS ARE COMPUTED, UNLESS OTHERWISE NOTED.
- BOTTOM HOLE LOCATIONS AND HORIZONTAL COMPLETION ZONE PROVIDED BY OTHERS.



0 1000
SCALE: 1"= 1000'
U.S. SURVEY FEET



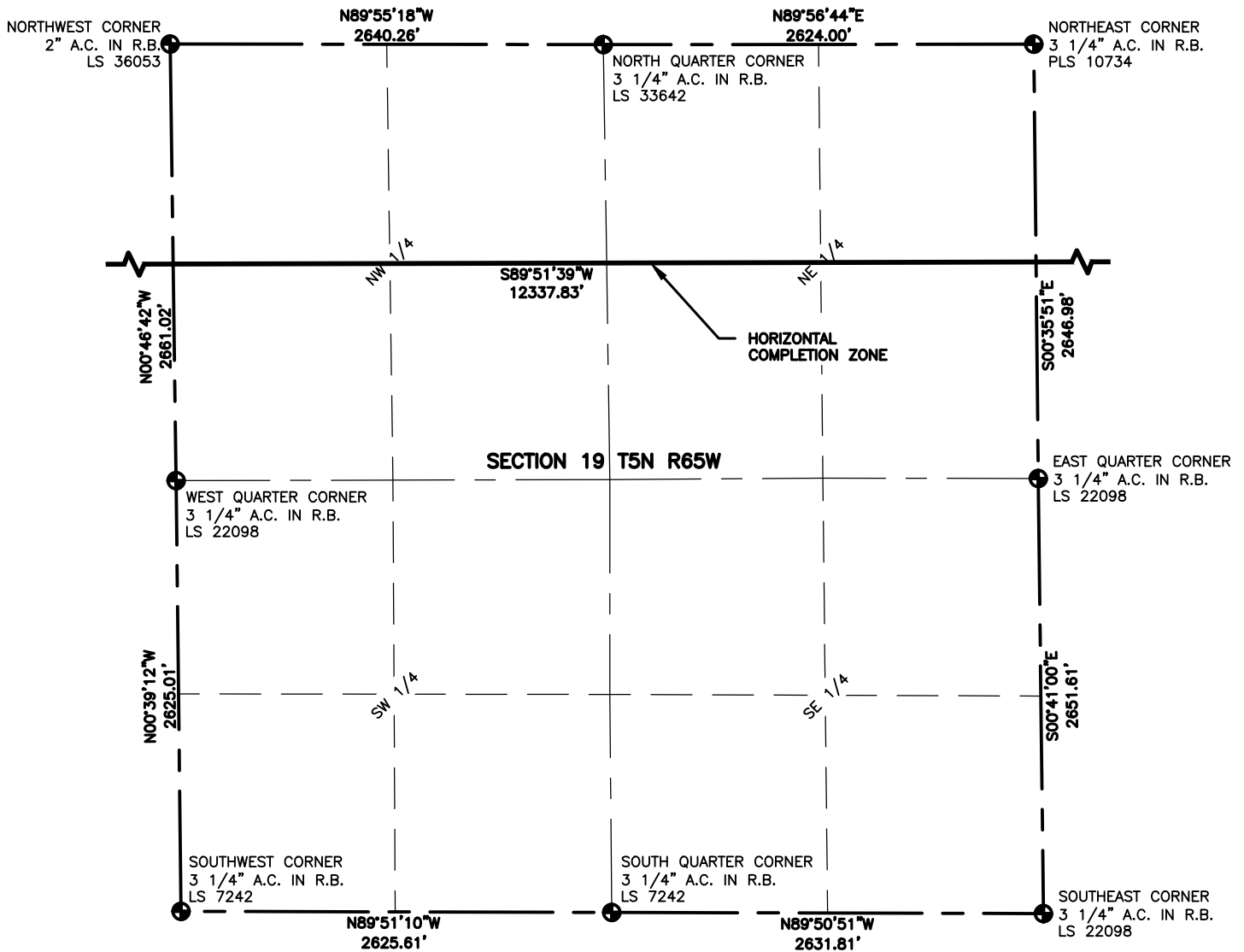
LAMP RYNEARSON
& ASSOCIATES

4715 Innovation Drive 970.226.0342 | P
Fort Collins, CO 80525 970.226.0879 | F
www.LRA-Inc.com

PROPOSED WELL LOCATION EXHIBIT
AD- J EVANS 3-20-24
2 OF 4

DRAWN BY	DATE	COGCC ID	PROJECT - TASK NUMBER	BOOK AND PAGE
JMC	01/17/17	0216012	21-1-DRAWINGS\EXHIBITS\PRELIMINARY PLAT	MRI_04 20-25

SURFACE - LOCATION
NW/4 SW/4 SEC 21 T5N R65W

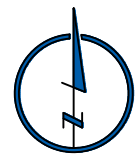


LEGEND

- ALIQUOT CORNER
- ⊙ PROPOSED WELL
- ⊙ BOTTOM HOLE
- A.C. ALUMINUM CAP
- R.B. RANGE BOX

NOTES:

- DISTANCES ARE MEASURED PERPENDICULAR TO NEAREST SECTION LINE AND ARE SHOWN ON THE SAME SIDE OF THE SECTION LINE WHERE THE WELL IS LOCATED.
- THIS MAP DOES NOT REPRESENT A MONUMENTED BOUNDARY SURVEY. SIXTEENTH CORNER LOCATIONS ARE COMPUTED, UNLESS OTHERWISE NOTED.
- BOTTOM HOLE LOCATIONS AND HORIZONTAL COMPLETION ZONE PROVIDED BY OTHERS.



0 1000
SCALE: 1"= 1000'
U.S. SURVEY FEET



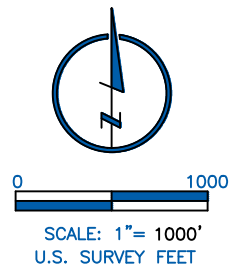
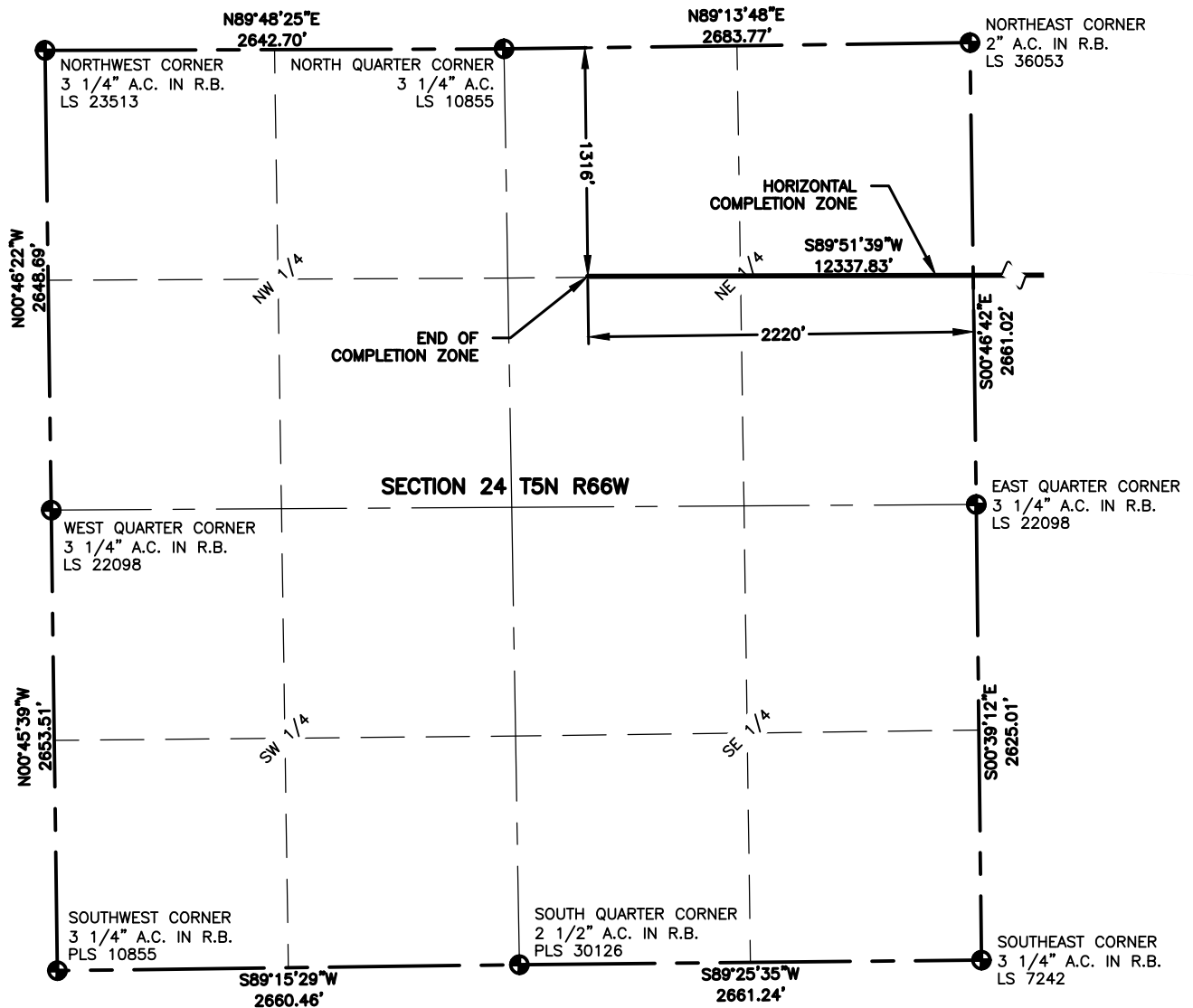
LAMP RYNEARSON
& ASSOCIATES

4715 Innovation Drive 970.226.0342 | P
Fort Collins, CO 80525 970.226.0879 | F
www.LRA-Inc.com

PROPOSED WELL LOCATION EXHIBIT
AD-J EVANS 3-20-24
3 OF 4

DRAWN BY	DATE	COGCC ID	PROJECT - TASK NUMBER	BOOK AND PAGE
JMC	01/17/17	0216012	21-I\DRAWINGS\EXHIBITS\PRELIMINARY PLAT	MRI_04 20-25

SURFACE - LOCATION
NW/4 SW/4 SEC 21 T5N R65W



LAMP RYNEARSON
& ASSOCIATES

4715 Innovation Drive 970.226.0342 | P
Fort Collins, CO 80525 970.226.0879 | F
www.LRA-Inc.com

PROPOSED WELL LOCATION EXHIBIT
AD-J EVANS 3-20-24
4 OF 4

DRAWN BY	DATE	COGCC ID	PROJECT - TASK NUMBER	BOOK AND PAGE
JMC	01/17/17	0216012	21-1\DRAWINGS\EXHIBITS\PRELIMINARY	MRI 04 20-25

SURFACE - LOCATION
NW/4 SW/4 SEC 21 T5N R65W