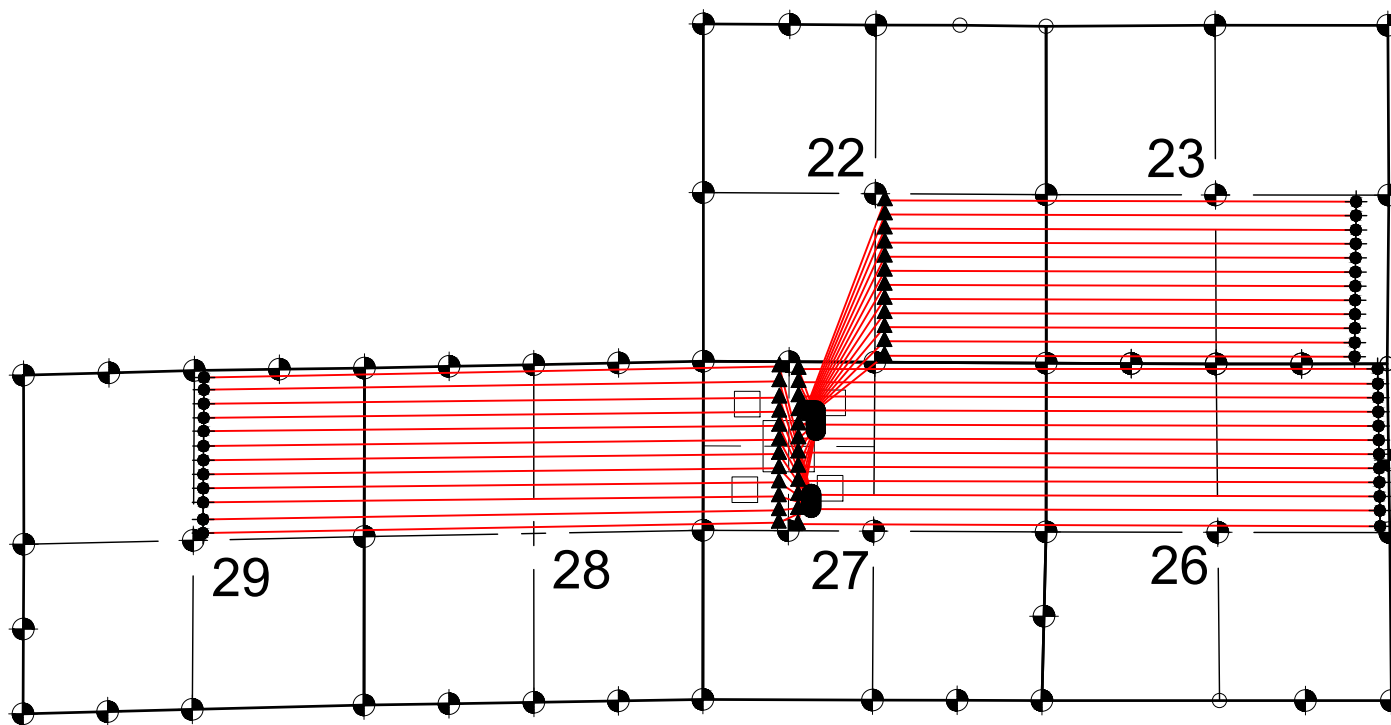


TROUDT 18-27 PAD MULTI-WELL PLAN

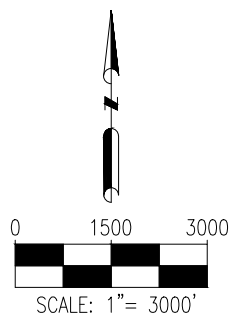




NOTES:

1. THIS FIELD SURVEY CONFORMS TO THE MINIMUM STANDARDS SET BY THE C.O.G.C.C., RULE NO. 215
2. BEARINGS ARE BASED ON THE ASSUMPTION THAT THE WEST LINE OF THE NORTHWEST QUARTER OF SECTION 27, BEARS N00°04'2"E BETWEEN THE MONUMENTS SHOWN HEREON.
3. ALL DISTANCES AND BEARINGS SHOWN HEREON ARE GROUND VALUES AS GPS MEASURED IN THE FIELD, WITH TIES TO WELLS MEASURED PERPENDICULAR TO SECTION LINES. THIS LOW DISTORTION PROJECTION (LDP) IS BASED ON THE NORTH AMERICAN DATUM OF 1983, U.S. SURVEY FOOT WITH A LATITUDE ORIGIN OF 40.481168°N, A CENTRAL MERIDIAN LONGITUDE OF 104.773359°W, AND A SCALE FACTOR ON THE CENTRAL MERIDIAN OF 1.000221 (EXACT). THE LDP BASIS OF BEARINGS IS GEODETIC NORTH.
4. FIELD VERIFICATION OF MONUMENTS COMPLETED WITHIN 1 YEAR OF SIGNATURE DATE.

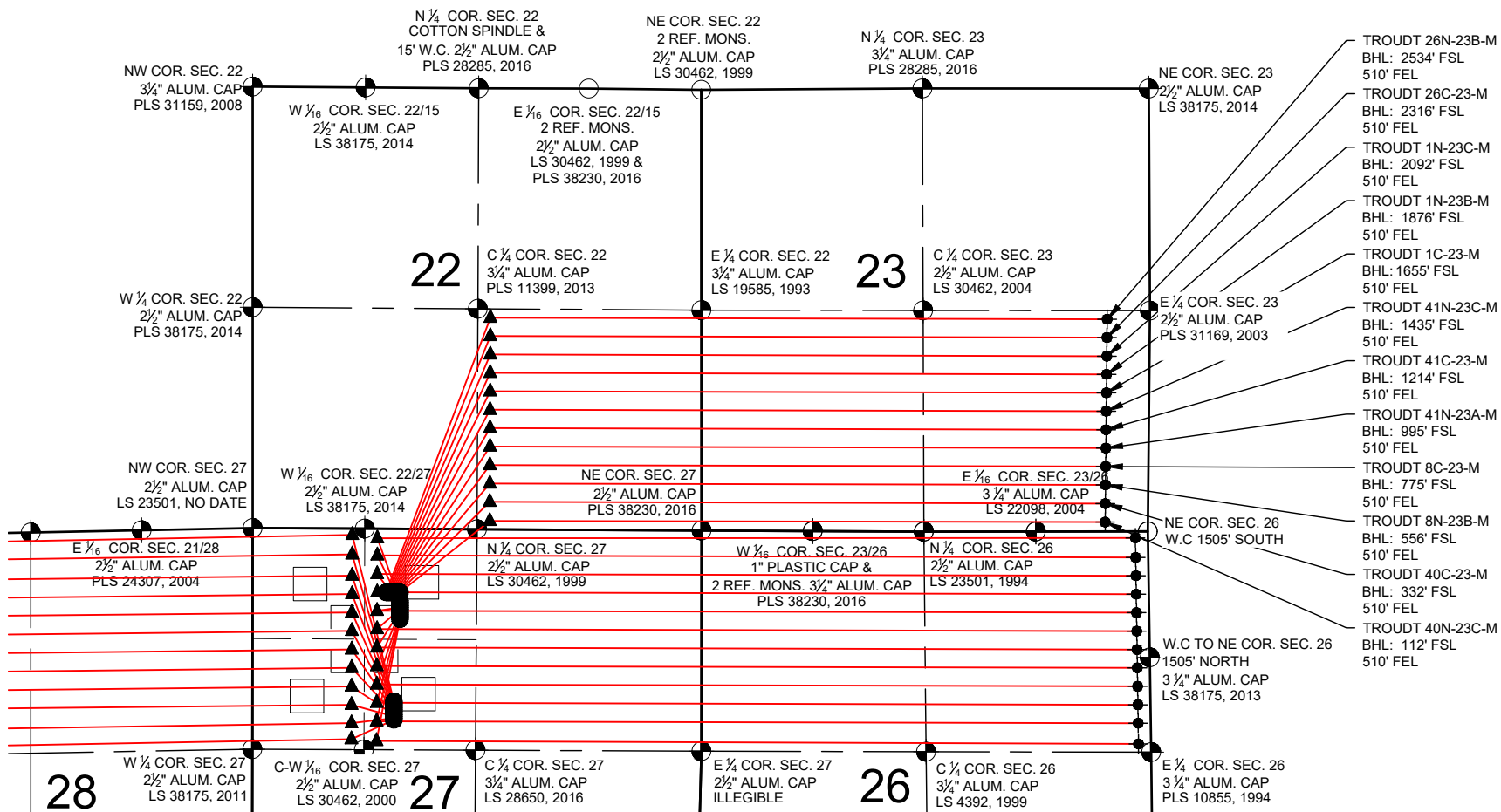
LEGEND

- = EXISTING MONUMENT
- = CALCULATED POSITION
- = PROPOSED WELL
- ◆ = EXISTING WELL
- ◆ = BOTTOM HOLE
- ▲ = TOP OF PRODUCTION ZONE
- TPZ = TOP OF PRODUCTION ZONE
- BHL = BOTTOM HOLE LOCATION



 <p>7535 Hilltop Circle Denver, CO 80221 (303) 928-7128 www.ascentgeomatics.com</p>	FIELD DATE: 04-27-17	WELL NAME: TROUDT 18-27 PAD	PREPARED FOR:  SRC ENERGY
	DRAWING DATE: 07-11-17	SURFACE LOCATION: E 1/2 NW 1/4 SEC. 27, T6N, R66W, 6TH P.M. WELD COUNTY, COLORADO	
BY: DJP	CHECKED BY: KAD		

TROUDT 18-27 PAD MULTI-WELL PLAN



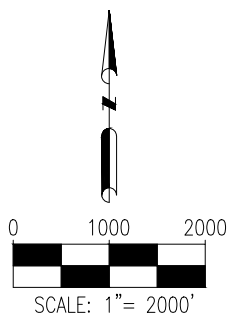
NOTES:

1. THIS FIELD SURVEY CONFORMS TO THE MINIMUM STANDARDS SET BY THE C.O.G.C.C., RULE NO. 215
2. BEARINGS ARE BASED ON THE ASSUMPTION THAT THE WEST LINE OF THE NORTHWEST QUARTER OF SECTION 27, BEARS N00°04'2"E BETWEEN THE MONUMENTS SHOWN HEREON.
3. ALL DISTANCES AND BEARINGS SHOWN HEREON ARE GROUND VALUES AS GPS MEASURED IN THE FIELD, WITH TIES TO WELLS MEASURED PERPENDICULAR TO SECTION LINES. THIS LOW DISTORTION PROJECTION (LDP) IS BASED ON THE NORTH AMERICAN DATUM OF 1983, U.S. SURVEY FOOT WITH A LATITUDE ORIGIN OF 40.481168°N, A CENTRAL MERIDIAN LONGITUDE OF 104.773359°W, AND A SCALE FACTOR ON THE CENTRAL MERIDIAN OF 1.000221 (EXACT). THE LDP BASIS OF BEARINGS IS GEODETIC NORTH.
4. FIELD VERIFICATION OF MONUMENTS COMPLETED WITHIN 1 YEAR OF SIGNATURE DATE.

LEGEND

- ⊙ = EXISTING MONUMENT
- = CALCULATED POSITION
- = PROPOSED WELL
- ◆ = EXISTING WELL
- ⬇ = BOTTOM HOLE
- ▲ = TOP OF PRODUCTION ZONE
- TPZ = TOP OF PRODUCTION ZONE
- BHL = BOTTOM HOLE LOCATION

SHEET 2 OF 8

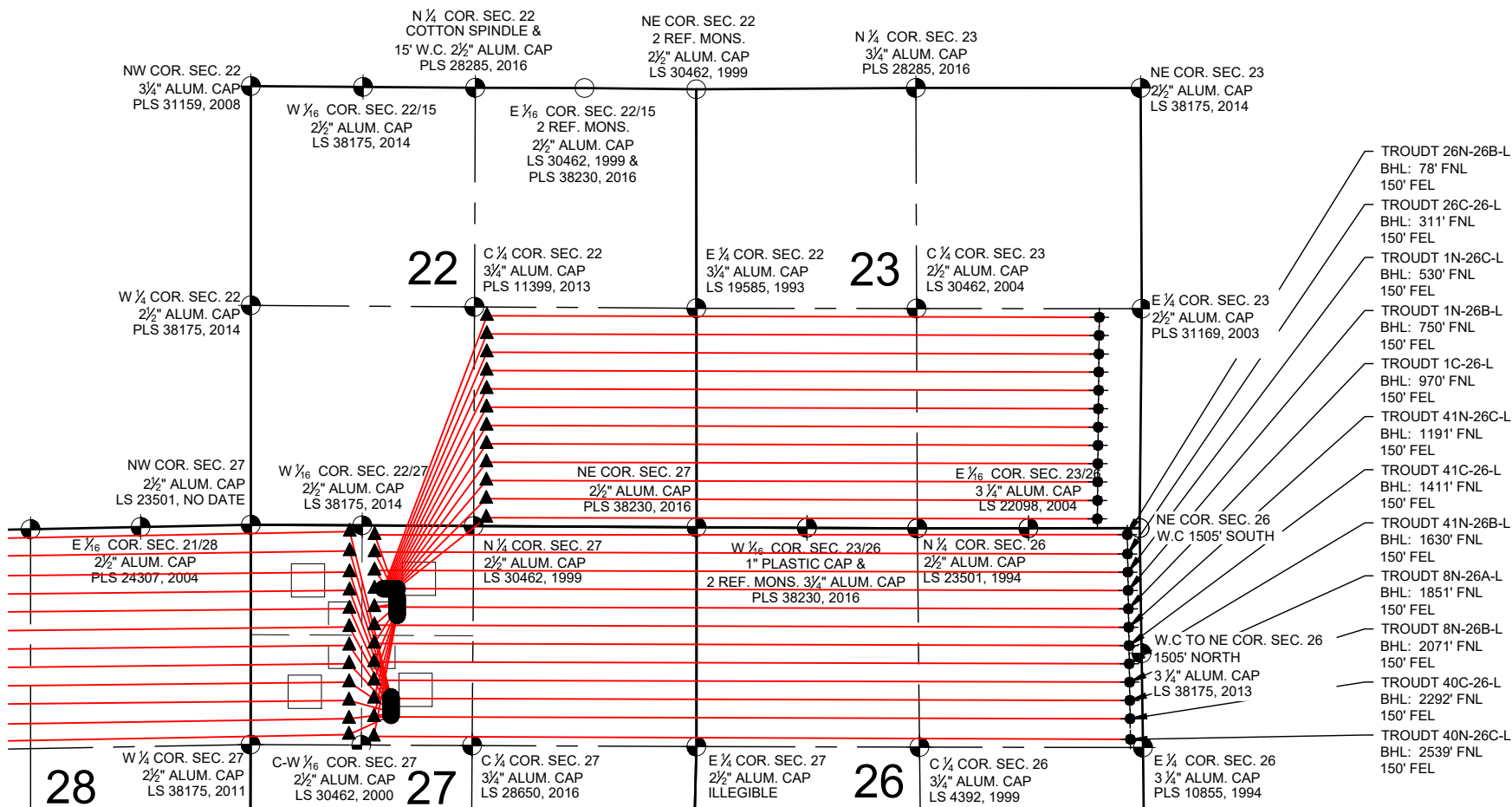


 7535 Hilltop Circle Denver, CO 80221 (303) 928-7128 www.ascentgeomatics.com	FIELD DATE: 04-27-17	WELL NAME: TROUDT 18-27 PAD
	DRAWING DATE: 07-11-17	SURFACE LOCATION: E 1/2 NW 1/4 SEC. 27, T6N, R66W, 6TH P.M. WELD COUNTY, COLORADO
BY: DJP	CHECKED BY: KAD	

PREPARED FOR:

SRC ENERGY

TROUDT 18-27 PAD MULTI-WELL PLAN

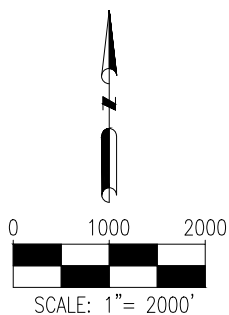




NOTES:

1. THIS FIELD SURVEY CONFORMS TO THE MINIMUM STANDARDS SET BY THE C.O.G.C.C., RULE NO. 215
2. BEARINGS ARE BASED ON THE ASSUMPTION THAT THE WEST LINE OF THE NORTHWEST QUARTER OF SECTION 27, BEARS N00°04'2"E BETWEEN THE MONUMENTS SHOWN HEREON.
3. ALL DISTANCES AND BEARINGS SHOWN HEREON ARE GROUND VALUES AS GPS MEASURED IN THE FIELD, WITH TIES TO WELLS MEASURED PERPENDICULAR TO SECTION LINES. THIS LOW DISTORTION PROJECTION (LDP) IS BASED ON THE NORTH AMERICAN DATUM OF 1983, U.S. SURVEY FOOT WITH A LATITUDE ORIGIN OF 40.481168°N, A CENTRAL MERIDIAN LONGITUDE OF 104.773359°W, AND A SCALE FACTOR ON THE CENTRAL MERIDIAN OF 1.000221 (EXACT). THE LDP BASIS OF BEARINGS IS GEODETIC NORTH.
4. FIELD VERIFICATION OF MONUMENTS COMPLETED WITHIN 1 YEAR OF SIGNATURE DATE.

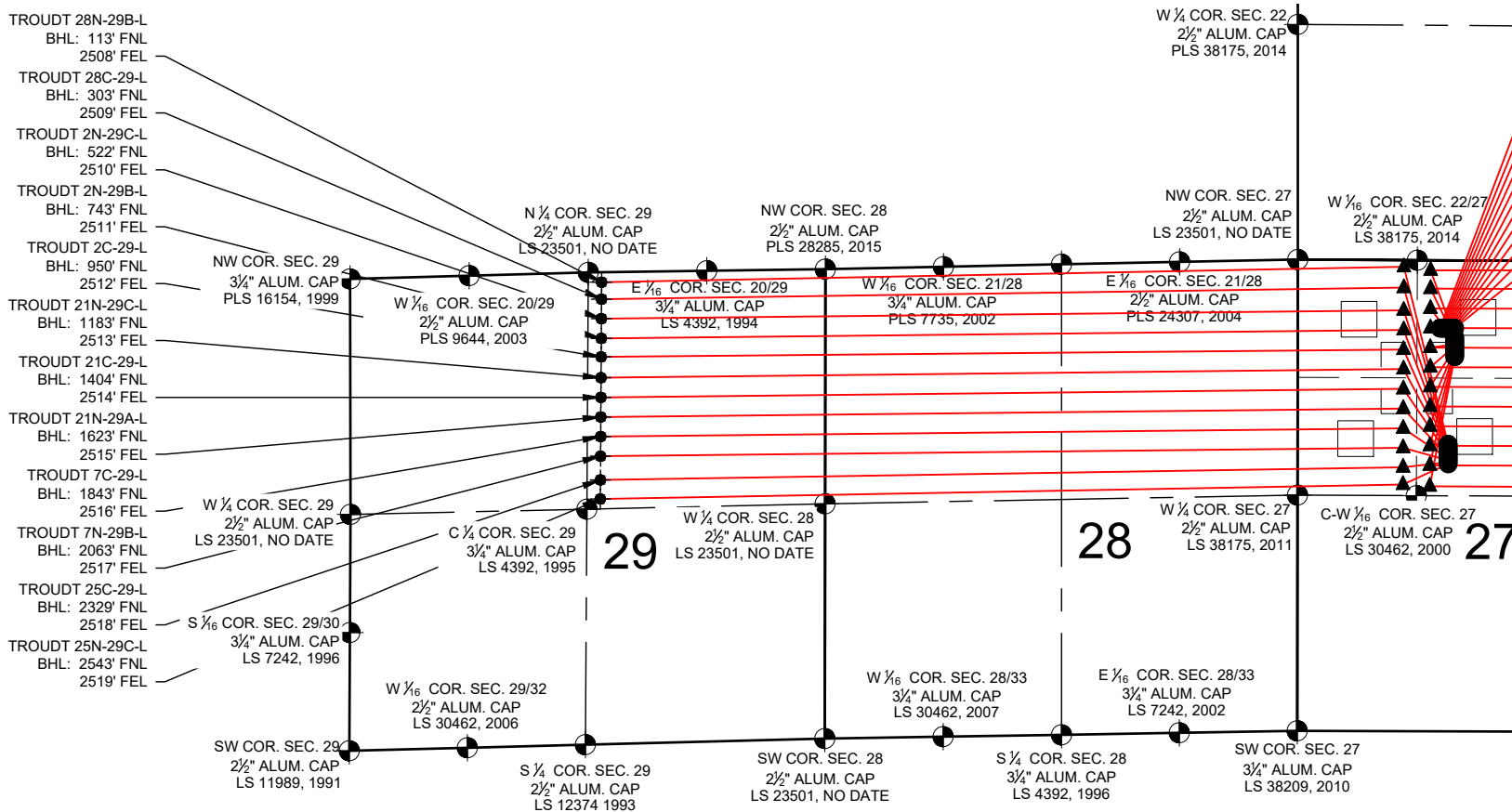
LEGEND

- = EXISTING MONUMENT
- = CALCULATED POSITION
- = PROPOSED WELL
- ◆ = EXISTING WELL
- ⬇ = BOTTOM HOLE
- ▲ = TOP OF PRODUCTION ZONE
- TPZ = TOP OF PRODUCTION ZONE
- BHL = BOTTOM HOLE LOCATION



 <p>7535 Hilltop Circle Denver, CO 80221 (303) 928-7128 www.ascentgeomatics.com</p>	FIELD DATE: 04-27-17	WELL NAME: TROUDT 18-27 PAD	PREPARED FOR:  SRC ENERGY
	DRAWING DATE: 07-11-17	SURFACE LOCATION: E 1/2 NW 1/4 SEC. 27, T6N, R66W, 6TH P.M. WELD COUNTY, COLORADO	
BY: DJP	CHECKED BY: KAD		

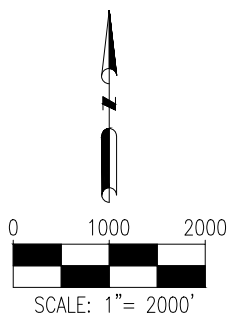
TROUDT 18-27 PAD MULTI-WELL PLAN





- NOTES:**
1. THIS FIELD SURVEY CONFORMS TO THE MINIMUM STANDARDS SET BY THE C.O.G.C.C., RULE NO. 215
 2. BEARINGS ARE BASED ON THE ASSUMPTION THAT THE WEST LINE OF THE NORTHWEST QUARTER OF SECTION 27, BEARS N00°04'2"E BETWEEN THE MONUMENTS SHOWN HEREON.
 3. ALL DISTANCES AND BEARINGS SHOWN HEREON ARE GROUND VALUES AS GPS MEASURED IN THE FIELD, WITH TIES TO WELLS MEASURED PERPENDICULAR TO SECTION LINES. THIS LOW DISTORTION PROJECTION (LDP) IS BASED ON THE NORTH AMERICAN DATUM OF 1983, U.S. SURVEY FOOT WITH A LATITUDE ORIGIN OF 40.481168°N, A CENTRAL MERIDIAN LONGITUDE OF 104.773359°W, AND A SCALE FACTOR ON THE CENTRAL MERIDIAN OF 1.000221 (EXACT). THE LDP BASIS OF BEARINGS IS GEODETIC NORTH.
 4. FIELD VERIFICATION OF MONUMENTS COMPLETED WITHIN 1 YEAR OF SIGNATURE DATE.

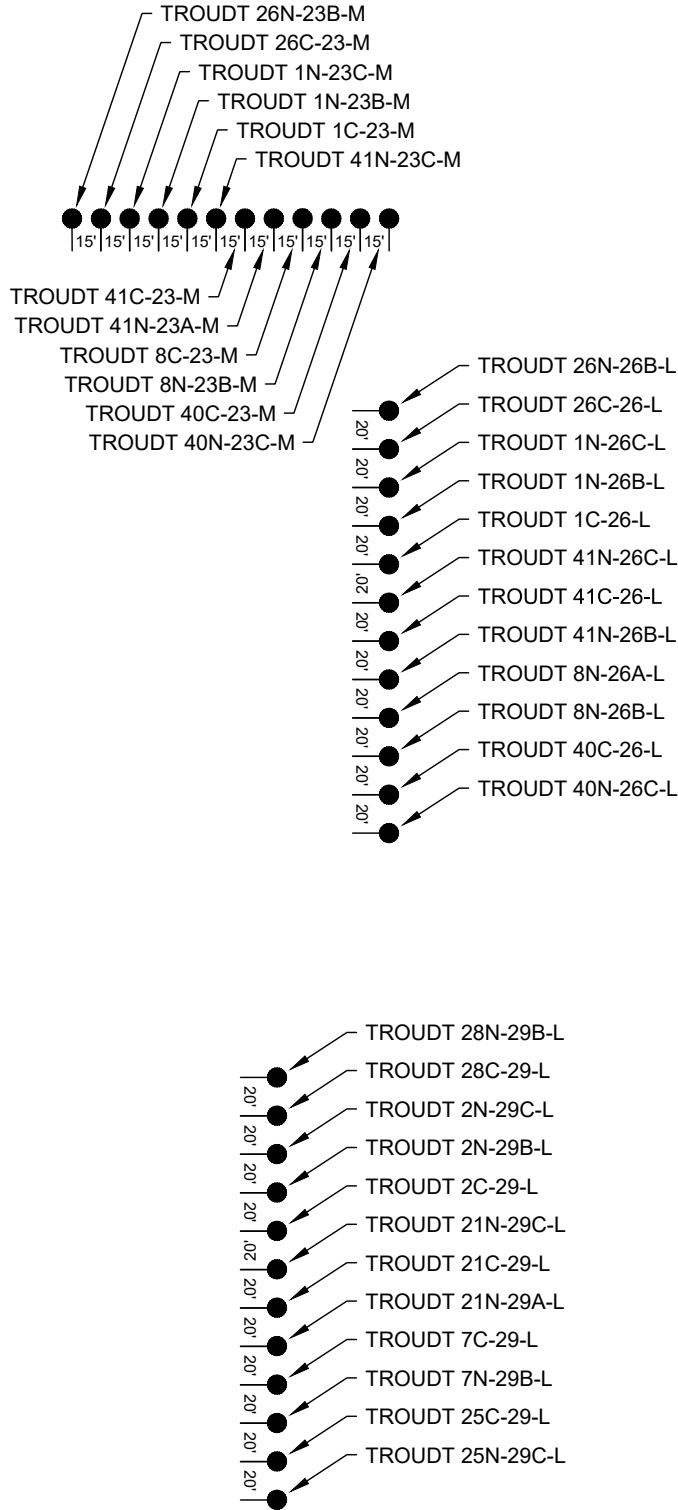
LEGEND

- = EXISTING MONUMENT
- = CALCULATED POSITION
- = PROPOSED WELL
- ◆ = EXISTING WELL
- ⬇ = BOTTOM HOLE
- ▲ = TOP OF PRODUCTION ZONE
- TPZ = TOP OF PRODUCTION ZONE
- BHL = BOTTOM HOLE LOCATION



 <p>7535 Hilltop Circle Denver, CO 80221 (303) 928-7128 www.ascentgeomatics.com</p>	FIELD DATE: 04-27-17	WELL NAME: TROUDT 18-27 PAD	PREPARED FOR:  SRC ENERGY
	DRAWING DATE: 07-11-17	SURFACE LOCATION: E 1/2 NW 1/4 SEC. 27, T6N, R66W, 6TH P.M. WELD COUNTY, COLORADO	
BY: DJP	CHECKED BY: KAD		

TROUDT 18-27 PAD MULTI-WELL PLAN



LEGEND
● = PROPOSED WELL

7535 Hilltop Circle
Denver, CO 80221
(303) 928-7128
www.ascentgeomatics.com

FIELD DATE: 04-27-17		WELL NAME: TROUDT 18-27 PAD	
DRAWING DATE: 07-11-17		SURFACE LOCATION: E 1/2 NW 1/4 SEC. 27, T6N, R66W, 6TH P.M.	
BY: DJP	CHECKED BY: KAD	WELD COUNTY, COLORADO	

PREPARED FOR:

TROUDT 18-27 PAD MULTI-WELL PLAN

TROUDT 26N-23B-M

SURFACE HOLE:
761' FNL & 1594' FWL
LAT: 40.464592° N
LON: 104.767638° W

TOP OF PRODUCTION ZONE:
2528' FSL & 2519' FEL
LAT: 40.473596° N
LON: 104.763163° W

BOTTOM HOLE:
2534' FSL & 510' FEL
LAT: 40.473540° N
LON: 104.736709° W

FORMATION:
NIOBRARA

TROUDT 26C-23-M

SURFACE HOLE:
761' FNL & 1609' FWL
LAT: 40.464592° N
LON: 104.767584° W

TOP OF PRODUCTION ZONE:
2308' FSL & 2520' FEL
LAT: 40.472994° N
LON: 104.763166° W

BOTTOM HOLE:
2316' FSL & 510' FEL
LAT: 40.472942° N
LON: 104.736717° W

FORMATION:
CODELL

TROUDT 1N-23C-M

SURFACE HOLE:
760' FNL & 1624' FWL
LAT: 40.464592° N
LON: 104.767530° W

TOP OF PRODUCTION ZONE:
2089' FSL & 2521' FEL
LAT: 40.472391° N
LON: 104.763169° W

BOTTOM HOLE:
2092' FSL & 510' FEL
LAT: 40.472328° N
LON: 104.736726° W

FORMATION:
NIOBRARA

TROUDT 1N-23B-M

SURFACE HOLE:
760' FNL & 1640' FWL
LAT: 40.464592° N
LON: 104.767476° W

TOP OF PRODUCTION ZONE:
1869' FSL & 2522' FEL
LAT: 40.471789° N
LON: 104.763172° W

BOTTOM HOLE:
1876' FSL & 510' FEL
LAT: 40.471735° N
LON: 104.736733° W

FORMATION:
NIOBRARA

TROUDT 1C-23-M

SURFACE HOLE:
760' FNL & 1654' FWL
LAT: 40.464592° N
LON: 104.767423° W

TOP OF PRODUCTION ZONE:
1649' FSL & 2523' FEL
LAT: 40.471186° N
LON: 104.763175° W

BOTTOM HOLE:
1655' FSL & 510' FEL
LAT: 40.471129° N
LON: 104.736742° W

FORMATION:
CODELL

TROUDT 41N-23C-M

SURFACE HOLE:
760' FNL & 1669' FWL
LAT: 40.464592° N
LON: 104.767369° W

TOP OF PRODUCTION ZONE:
1428' FSL & 2523' FEL
LAT: 40.470579° N
LON: 104.763178° W

BOTTOM HOLE:
1435' FSL & 510' FEL
LAT: 40.470523° N
LON: 104.736750° W

FORMATION:
NIOBRARA

TROUDT 41C-23-M

SURFACE HOLE:
760' FNL & 1684' FWL
LAT: 40.464592° N
LON: 104.767315° W

TOP OF PRODUCTION ZONE:
1208' FSL & 2524' FEL
LAT: 40.469976° N
LON: 104.763181° W

BOTTOM HOLE:
1214' FSL & 510' FEL
LAT: 40.469917° N
LON: 104.736758° W

FORMATION:
CODELL

TROUDT 41N-23A-M

SURFACE HOLE:
760' FNL & 1700' FWL
LAT: 40.464592° N
LON: 104.767261° W

TOP OF PRODUCTION ZONE:
989' FSL & 2525' FEL
LAT: 40.469374° N
LON: 104.763183° W

BOTTOM HOLE:
995' FSL & 510' FEL
LAT: 40.469315° N
LON: 104.736766° W

FORMATION:
NIOBRARA

TROUDT 8C-23-M

SURFACE HOLE:
760' FNL & 1715' FWL
LAT: 40.464592° N
LON: 104.767207° W

TOP OF PRODUCTION ZONE:
767' FSL & 2526' FEL
LAT: 40.468766° N
LON: 104.763186° W

BOTTOM HOLE:
775' FSL & 510' FEL
LAT: 40.468714° N
LON: 104.736774° W

FORMATION:
CODELL

TROUDT 8N-23B-M

SURFACE HOLE:
760' FNL & 1730' FWL
LAT: 40.464592° N
LON: 104.767153° W

TOP OF PRODUCTION ZONE:
548' FSL & 2527' FEL
LAT: 40.468163° N
LON: 104.763189° W

BOTTOM HOLE:
556' FSL & 510' FEL
LAT: 40.468112° N
LON: 104.736782° W

FORMATION:
NIOBRARA

TROUDT 40C-23-M

SURFACE HOLE:
760' FNL & 1745' FWL
LAT: 40.464592° N
LON: 104.767099° W

TOP OF PRODUCTION ZONE:
328' FSL & 2528' FEL
LAT: 40.467561° N
LON: 104.763192° W

BOTTOM HOLE:
323' FSL & 510' FEL
LAT: 40.467498° N
LON: 104.736790° W

FORMATION:
CODELL

TROUDT 40N-23C-M

SURFACE HOLE:
760' FNL & 1760' FWL
LAT: 40.464592° N
LON: 104.767045° W


TOP OF PRODUCTION ZONE:
101' FSL & 2529' FEL
LAT: 40.466937° N
LON: 104.763195° W

BOTTOM HOLE:
112' FSL & 510' FEL
LAT: 40.466892° N
LON: 104.736798° W

FORMATION:
NIOBRARA



FIELD DATE: 04-27-17	WELL NAME: TROUDT 18-27 PAD
DRAWING DATE: 07-11-17	SURFACE LOCATION: E 1/2 NW 1/4 SEC. 27, T6N, R66W, 6TH P.M. WELD COUNTY, COLORADO
BY: DJP	CHECKED BY: KAD

PREPARED FOR:  SRC ENERGY
--

TROUDT 18-27 PAD MULTI-WELL PLAN

TROUDT 26N-26B-L SURFACE HOLE: 860' FNL & 1760' FWL LAT: 40.464317° N LON: 104.767045° W	TOP OF PRODUCTION ZONE: 114' FNL & 1490' FWL LAT: 40.466370° N LON: 104.768012° W	BOTTOM HOLE: 78' FNL & 150' FEL LAT: 40.466373° N LON: 104.735504° W	FORMATION: NIOBRARA
TROUDT 26C-26-L SURFACE HOLE: 880' FNL & 1760' FWL LAT: 40.464262° N LON: 104.767045° W	TOP OF PRODUCTION ZONE: 318' FNL & 1489' FWL LAT: 40.465807° N LON: 104.768016° W	BOTTOM HOLE: 311' FNL & 150' FEL LAT: 40.465733° N LON: 104.735492° W	FORMATION: CODELL
TROUDT 1N-26C-L SURFACE HOLE: 900' FNL & 1760' FWL LAT: 40.464208° N LON: 104.767045° W	TOP OF PRODUCTION ZONE: 541' FNL & 1488' FWL LAT: 40.465197° N LON: 104.768017° W	BOTTOM HOLE: 530' FNL & 150' FEL LAT: 40.465133° N LON: 104.735480° W	FORMATION: NIOBRARA
TROUDT 1N-26B-L SURFACE HOLE: 920' FNL & 1760' FWL LAT: 40.464153° N LON: 104.767045° W	TOP OF PRODUCTION ZONE: 760' FNL & 1488' FWL LAT: 40.464597° N LON: 104.768019° W	BOTTOM HOLE: 750' FNL & 150' FEL LAT: 40.464528° N LON: 104.735468° W	FORMATION: NIOBRARA
TROUDT 1C-26-L SURFACE HOLE: 940' FNL & 1760' FWL LAT: 40.464098° N LON: 104.767045° W	TOP OF PRODUCTION ZONE: 980' FNL & 1487' FWL LAT: 40.463991° N LON: 104.768026° W	BOTTOM HOLE: 970' FNL & 150' FEL LAT: 40.463923° N LON: 104.735456° W	FORMATION: CODELL
TROUDT 41N-26C-L SURFACE HOLE: 960' FNL & 1760' FWL LAT: 40.464043° N LON: 104.767045° W	TOP OF PRODUCTION ZONE: 1199' FNL & 1486' FWL LAT: 40.463391° N LON: 104.768029° W	BOTTOM HOLE: 1191' FNL & 150' FEL LAT: 40.463318° N LON: 104.735444° W	FORMATION: NIOBRARA
TROUDT 41C-26-L SURFACE HOLE: 980' FNL & 1760' FWL LAT: 40.463988° N LON: 104.767045° W	TOP OF PRODUCTION ZONE: 1420' FNL & 1486' FWL LAT: 40.462785° N LON: 104.768032° W	BOTTOM HOLE: 1411' FNL & 150' FEL LAT: 40.462713° N LON: 104.735432° W	FORMATION: CODELL
TROUDT 41N-26B-L SURFACE HOLE: 1000' FNL & 1760' FWL LAT: 40.463933° N LON: 104.767045° W	TOP OF PRODUCTION ZONE: 1640' FNL & 1485' FWL LAT: 40.462180° N LON: 104.768036° W	BOTTOM HOLE: 1630' FNL & 150' FEL LAT: 40.462113° N LON: 104.735421° W	FORMATION: NIOBRARA
TROUDT 8N-26A-L SURFACE HOLE: 1020' FNL & 1760' FWL LAT: 40.463878° N LON: 104.767045° W	TOP OF PRODUCTION ZONE: 1861' FNL & 1484' FWL LAT: 40.461575° N LON: 104.768039° W	BOTTOM HOLE: 1851' FNL & 150' FEL LAT: 40.461508° N LON: 104.735409° W	FORMATION: NIOBRARA
TROUDT 8N-26B-L SURFACE HOLE: 1040' FNL & 1760' FWL LAT: 40.463823° N LON: 104.767045° W	TOP OF PRODUCTION ZONE: 2080' FNL & 1484' FWL LAT: 40.460974° N LON: 104.768042° W	BOTTOM HOLE: 2071' FNL & 150' FEL LAT: 40.460903° N LON: 104.735397° W	FORMATION: NIOBRARA
TROUDT 40C-26-L SURFACE HOLE: 1060' FNL & 1760' FWL LAT: 40.463769° N LON: 104.767045° W	TOP OF PRODUCTION ZONE: 2300' FNL & 1483' FWL LAT: 40.460369° N LON: 104.768046° W	BOTTOM HOLE: 2292' FNL & 150' FEL LAT: 40.460298° N LON: 104.735385° W	FORMATION: CODELL
TROUDT 40N-26C-L SURFACE HOLE: 1080' FNL & 1760' FWL LAT: 40.463714° N LON: 104.767045° W	TOP OF PRODUCTION ZONE: 2535' FNL & 1482' FWL LAT: 40.459725° N LON: 104.768049° W	BOTTOM HOLE: 2539' FNL & 150' FEL LAT: 40.459620° N LON: 104.735372° W	FORMATION: NIOBRARA

SHEET 7 OF 8



FIELD DATE: 04-27-17	WELL NAME: TROUDT 18-27 PAD
DRAWING DATE: 07-11-17	SURFACE LOCATION: E 1/2 NW 1/4 SEC. 27, T6N, R66W, 6TH P.M.
BY: DJP	CHECKED BY: KAD

E 1/2 NW 1/4 SEC. 27, T6N, R66W, 6TH P.M.
WELD COUNTY, COLORADO



TROUDT 18-27 PAD MULTI-WELL PLAN

TROUDT 28N-29B-L
SURFACE HOLE:
2062' FNL & 1688' FWL
LAT: 40.461020° N
LON: 104.767306° W

TOP OF PRODUCTION ZONE:
75' FNL & 1190' FWL
LAT: 40.466479° N
LON: 104.769090° W

BOTTOM HOLE:
113' FNL & 2508' FEL
LAT: 40.466002° N
LON: 104.801400° W

FORMATION:
NIOBRARA

TROUDT 28C-29-L
SURFACE HOLE:
2082' FNL & 1689' FWL
LAT: 40.460965° N
LON: 104.767306° W

TOP OF PRODUCTION ZONE:
309' FNL & 1189' FWL
LAT: 40.465839° N
LON: 104.769093° W

BOTTOM HOLE:
303' FNL & 2509' FEL
LAT: 40.465479° N
LON: 104.801404° W

FORMATION:
CODELL

TROUDT 2N-29C-L
SURFACE HOLE:
2102' FNL & 1689' FWL
LAT: 40.460910° N
LON: 104.767306° W

TOP OF PRODUCTION ZONE:
562' FNL & 1188' FWL
LAT: 40.465143° N
LON: 104.769097° W

BOTTOM HOLE:
522' FNL & 2510' FEL
LAT: 40.464879° N
LON: 104.801408° W

FORMATION:
NIOBRARA

TROUDT 2N-29B-L
SURFACE HOLE:
2122' FNL & 1689' FWL
LAT: 40.460856° N
LON: 104.767306° W

TOP OF PRODUCTION ZONE:
783' FNL & 1188' FWL
LAT: 40.464538° N
LON: 104.769100° W

BOTTOM HOLE:
743' FNL & 2511' FEL
LAT: 40.464273° N
LON: 104.801413° W

FORMATION:
NIOBRARA

TROUDT 2C-29-L
SURFACE HOLE:
2142' FNL & 1689' FWL
LAT: 40.460801° N
LON: 104.767306° W

TOP OF PRODUCTION ZONE:
1003' FNL & 1187' FWL
LAT: 40.463933° N
LON: 104.769104° W

BOTTOM HOLE:
950' FNL & 2512' FEL
LAT: 40.463704° N
LON: 104.801417° W

FORMATION:
CODELL

TROUDT 21N-29C-L
SURFACE HOLE:
2162' FNL & 1689' FWL
LAT: 40.460746° N
LON: 104.767306° W

TOP OF PRODUCTION ZONE:
1221' FNL & 1186' FWL
LAT: 40.463334° N
LON: 104.769107° W

BOTTOM HOLE:
1183' FNL & 2513' FEL
LAT: 40.463064° N
LON: 104.801422° W

FORMATION:
NIOBRARA

TROUDT 21C-29-L
SURFACE HOLE:
2182' FNL & 1689' FWL
LAT: 40.460691° N
LON: 104.767306° W

TOP OF PRODUCTION ZONE:
1444' FNL & 1186' FWL
LAT: 40.462724° N
LON: 104.769110° W

BOTTOM HOLE:
1404' FNL & 2514' FEL
LAT: 40.462458° N
LON: 104.801426° W

FORMATION:
CODELL

TROUDT 21N-29A-L
SURFACE HOLE:
2202' FNL & 1689' FWL
LAT: 40.460636° N
LON: 104.767306° W

TOP OF PRODUCTION ZONE:
1664' FNL & 1185' FWL
LAT: 40.462119° N
LON: 104.769114° W

BOTTOM HOLE:
1623' FNL & 2515' FEL
LAT: 40.461855° N
LON: 104.801431° W

FORMATION:
NIOBRARA

TROUDT 7C-29-L
SURFACE HOLE:
2222' FNL & 1689' FWL
LAT: 40.460581° N
LON: 104.767306° W

TOP OF PRODUCTION ZONE:
1886' FNL & 1184' FWL
LAT: 40.461509° N
LON: 104.769117° W

BOTTOM HOLE:
1843' FNL & 2516' FEL
LAT: 40.461252° N
LON: 104.801435° W

FORMATION:
CODELL

TROUDT 7N-29B-L
SURFACE HOLE:
2242' FNL & 1689' FWL
LAT: 40.460526° N
LON: 104.767306° W

TOP OF PRODUCTION ZONE:
2323' FNL & 1183' FWL
LAT: 40.460910° N
LON: 104.769120° W

BOTTOM HOLE:
2063' FNL & 2517' FEL
LAT: 40.460650° N
LON: 104.801440° W

FORMATION:
NIOBRARA

TROUDT 25C-29-L
SURFACE HOLE:
2262' FNL & 1689' FWL
LAT: 40.460471° N
LON: 104.767306° W

TOP OF PRODUCTION ZONE:
2323' FNL & 1183' FWL
LAT: 40.460310° N
LON: 104.769124° W

BOTTOM HOLE:
2329' FNL & 2518' FEL
LAT: 40.459919° N
LON: 104.801445° W

FORMATION:
CODELL

TROUDT 25N-29C-L
SURFACE HOLE:
2282' FNL & 1689' FWL
LAT: 40.460417° N
LON: 104.767306° W

TOP OF PRODUCTION ZONE:
2516' FNL & 1182' FWL
LAT: 40.459781° N
LON: 104.769127° W


BOTTOM HOLE:
2543' FNL & 2519' FEL
LAT: 40.459331° N
LON: 104.801450° W

FORMATION:
NIOBRARA



FIELD DATE: 04-27-17	WELL NAME: TROUDT 18-27 PAD
DRAWING DATE: 07-11-17	SURFACE LOCATION: E 1/2 NW 1/4 SEC. 27, T6N, R66W, 6TH P.M.
BY: DJP	CHECKED BY: KAD
WELD COUNTY, COLORADO	

PREPARED FOR:



SRC ENERGY